

Oceanfront & Seaside Bay Card

Bonnie-Lynn Lenke

623-229-6400

Bonnie@Bonniestamps.com

www.bonniestamps.com



The Oceanfront & Seaside Bay thank you card is perfect for summertime. My inspiration for this card was the Oregon Coast, which is beautiful of anytime of year. Also used, was the Waves Dies for the birds. The background is totally done by stamping. So grab your Oceanfront stamp set, ink pads and white cardstock and let's have some fun. Happy Stamping!

[CLICK FOR VIDEO](#)

Card Directions

1. Fold the Coastal Cabana Cardstock on the score line, burnish with Bone Folder.
2. Die Cut the Bright Coastal Cabana Designer Series Paper with the largest Deckled Rectangle, adhere to card front at an angle.
3. Use the 2nd largest Deckled Rectangle to die cut White Cardstock.
4. Stamp the sky stamp in Balmy Blue Ink (hint: don't press too hard if ink pad is juicy).
5. Stamp the ocean (largest of the two angled stamp) by inking stamp in Coastal Cabana then ink once in Tahitian Tide Ink, stamp adjacent to sky.
6. For the sand, use the smaller of the two angled stamps, inked in Crumb Cake and stamp off once before stamping adjacent to ocean. Repeat this about 3 or 4 times till you get the amount of sand wanted down to bottom.
7. From the Seaside Bay stamp set, stamp the shells in full strength Crumb Cake Ink over the bottom area of sand. Stamp the 3 birds stamp in Starry Sky Ink. Stamp the small grass from Oceanfront in Old Olive Ink on both sides of card near the water. Adhere your stamped scene to card front at an angle.
8. Using the smallest Deckled Rectangle die cut out of White Cardstock. Stamp greeting from Seaside Bay in Gray Granite Ink near the top of die cut. Now use a larger deckled rectangle die to die cut the excess white cardstock below greeting off. Adhere to card front with Dimensionals.
9. Add Adhesive Sheet to back of Black Cardstock then die cut 3 birds out using the Wave Dies. Adhere to card front.

Oceanfront & Seaside Bay Card

Bonnie-Lynn Lenke

623-229-6400

Bonnie@Bonniestamps.com

www.bonniestamps.com

10. Using Gray Granite Cardstock cut out both fence pieces using the Horizon Dies. Use scissors to cut off slate(s) of fence from each piece (cut from the taller end). Use small strips of Dimensionals to adhere to card front. Note - It wasn't until I was adding the merchandise to post on website that I realized that the Horizon Dies are now retired. I'm sorry for not knowing that when I made the card.
11. The inside was completed by stamping the shells in Crumb Ink at the bottom. Use the dotted sand stamp from Seaside Bay for the sand. Stamp the birds in Starry Sky Ink. Stamp the same scene on the Envelope Flap. (Stamp shells and sand before stamping the birds).



Card Recipe

Cardstock Cutting Directions:

- **Coastal Cabana:** 8-1/2" x 5-1/2", scored at 4-1/4" (card base)
- **Basic White:** 3-3/4" x 5" (card front), 5-1/4" x 4" (inside), 1-1/4" x 2-3/4" (greeting)
- **Gray Granite:** 2" x 4-1/2" (fence)
- **Black:** 1-1/2" x 2" (birds)
- **Brights Designer Series Paper:** 5-1/2" x 4-1/4" (card front)

Supplies Used:

- **Stamps:** Oceanfront, Seaside Bay
- **Dies:** Horizon Dies (retired), Wave Dies, Deckled Rectangles
- **Cardstock/Paper:** Coastal Cabana, Basic White, Black, Gray Granite, Brights Designer Series paper
- **Stampin Pads:** Balmy Blue, Coastal Cabana, Tahitian Tide, Crumb Cake, Pecan Pie, Starry Sky, Old Olive, Gray Granite
- **Embellishments:** Pebbles Enamel Shapes (retired, used in card done on video)
- **Adhesives:** Adhesive Sheets, Dimensionals, Stampin Seal
- **Tools:** Paper Trimmer, Cut & Emboss Machine, Clear Blocks, Take Your Pick, Bone Folder, Stampin Pierce Mat, Paper Snip Scissors

Oceanfront & Seaside Bay Card

Bonnie-Lynn Lenke

623-229-6400

Bonnie@Bonniestamps.com

www.bonniestamps.com



Oceanfront
Photopolymer
Stamp Set -
157862

Price: \$22.00

[Add to Cart](#)



Seaside Bay Cling
Stamp Set
(English) - 160436

Price: \$26.00

[Add to Cart](#)



Deckled
Rectangles Dies -
159173

Price: \$30.00

[Add to Cart](#)



Waves Dies -
158840

Price: \$34.00

[Add to Cart](#)



Coastal Cabana 8-
1/2" X 11"
Cardstock -
131297

Price: \$10.00

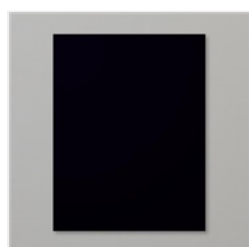
[Add to Cart](#)



Basic White 8-1/2"
X 11" Cardstock -
159276

Price: \$10.50

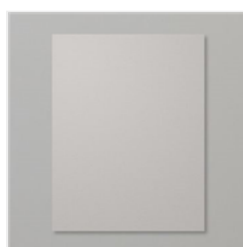
[Add to Cart](#)



Basic Black 8-1/2"
X 11" Cardstock -
121045

Price: \$10.00

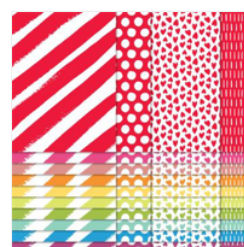
[Add to Cart](#)



Gray Granite 8-
1/2" X 11"
Cardstock -
146983

Price: \$10.00

[Add to Cart](#)



Brights 6" X 6"
(15.2 X 15.2 Cm)
Designer Series
Paper - 161643

Price: \$12.50

[Add to Cart](#)



Balmy Blue Classic
Stampin' Pad -
147105

Price: \$9.00

[Add to Cart](#)



Coastal Cabana
Classic Stampin'
Pad - 147097

Price: \$9.00

[Add to Cart](#)



Tahitian Tide
Classic Stampin'
Pad - 159210

Price: \$9.00

[Add to Cart](#)



Old Olive Classic
Stampin' Pad -
147090

Price: \$9.00

[Add to Cart](#)



Crumb Cake
Classic Stampin'
Pad - 147116

Price: \$9.00

[Add to Cart](#)



Starry Sky Classic
Stampin' Pad -
159212

Price: \$9.00

[Add to Cart](#)

Oceanfront & Seaside Bay Card

Bonnie-Lynn Lenke

623-229-6400

Bonnie@Bonniestamps.com

www.bonniestamps.com



Gray Granite
Classic Stampin'
Pad - 147118

Price: \$9.00

Add to Cart



Pecan Pie Classic
Stampin' Pad -
161665

Price: \$9.00

Add to Cart



Adhesive Sheets -
152334

Price: \$11.50

Add to Cart



Stampin'
Dimensionals -
104430

Price: \$4.25

Add to Cart



Stampin' Seal -
152813

Price: \$8.00

Add to Cart



Clear Block C -
118486

Price: \$8.00

Add to Cart



Clear Block D -
118485

Price: \$9.50

Add to Cart



Clear Block H -
118490

Price: \$9.50

Add to Cart



Clear Block I -
118488

Price: \$13.00

Add to Cart



Stampin' Pierce
Mat - 126199

Price: \$5.00

Add to Cart



Take Your Pick -
144107

Price: \$11.00

Add to Cart



Paper Snips
Scissors - 103579

Price: \$11.00

Add to Cart



Cutting Blades
Multipack - 152391

Price: \$12.00

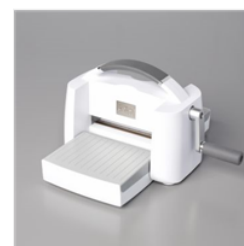
Add to Cart



Paper Trimmer -
152392

Price: \$26.00

Add to Cart



Stampin' Cut &
Emboss Machine -
149653

Price: \$128.00

Add to Cart