

Berry Harvest Thank You Card

Project Sheet - Aug 11 2023

Carol Buckalew

inkybeestampers@gmail.com

<https://www.inkybeestampers.com>



This card was created using the **Berry Harvest Stamp Set** which is one large stamp. You can find this stamp in the Annual Catalog. I also used some products from the upcoming Sep-Dec 2023 Mini Catalog including the **Autumn Leaves Bundle**, the gorgeous **All About Autumn 6" x 6" Specialty Designer Series Paper** and the **Adhesive-Backed Speckled Dots**. The techniques used on this card include coloring/shading and heat embossing. These colors create an awesome Fall card!

Supplies:

- Berry Harvest Stamp Set
- Autumn Leaves Bundle (Item #162186)
- All About Autumn 6" x 6" Specialty Designer Series Paper (Item #162178)
- White Herringbone Ribbon
- Adhesive-Backed Speckled Dots (Item #162191)
- Copper Stampin' Emboss Powder
- Heat Tool
- Cardstock: Blackberry Bliss, Old Olive, Basic White

Berry Harvest Thank You Card

Project Sheet - Aug 11 2023

Carol Buckalew

inkybeestampers@gmail.com

<https://www.inkybeestampers.com>

- Ink: Tuxedo Black Memento Ink, VersaMark, Old Olive, Copper Clay
- Stampin' Blends: Old Olive, Berry Burst, Color Lifter
- Adhesives: Multipurpose Liquid Glue, Stampin' Seal, Stampin' Dimensionals
- Paper Trimmer
- Stampin' Cut & Emboss Machine

1. Card Cuts:

- Card Base - Cut 1 Blackberry Bliss cardstock to 8-1/2" x 5-1/2", score at 4-1/4"
- DSP Panel - Cut 1 Mossy Meadow and copper print from the All About Autumn Specialty DSP pack to 5-3/8" x 4-1/8"
- Mat - Cut 1 Blackberry Bliss cardstock to 4-5/8" x 3-3/8"
- Panel - Cut 1 Basic White cardstock to 4-1/2" x 3-1/4"
- Sentiment Label - Cut 1 Blackberry Bliss cardstock to 2-1/2" x 1-1/8"
- Scrap of Old Olive cardstock for stamping, heat embossing, and die cutting leaves
- Inside Panel - Cut 1 Basic White cardstock to 5-3/8" x 4-1/8"
- Envelope Flap - Cut 1 coordinating piece of DSP to 6" x 2-1/4"

2. Adhere the DSP Panel to the card front and center from top to bottom and left to right.

3. On the Basic White panel measuring 4-1/2" x 3-1/4" stamp the Berry Harvest stamp image in Tuxedo Black Memento ink. This is a large stamp so **be sure to protect your work surface before stamping!** Color as follows:

- Color all of the berries using the light shade of a Berry Burst Stampin' Blend.
- Color all of the leaves using the light shade of an Old Olive Stampin' Blend.
- Use the Stampin' Blend Color Lifter to lift some of the color on the round sections of the berries. It is not necessary to lift a highlight on all of the round sections of each berry. Where you want stronger white highlights, you will need to lift the color multiple times. I used the bullet end of the Color Lifter and used a dotting motion to lift the color.
- Use the dark shade of an Old Olive Stampin' Blend to shade the leaves. Determine where the light source is coming from on the stamped image, then shade areas of the leaves where you think the shadows would be the darkest. For instance, the shadows would be darkest on the leaves that are sitting under another leaf, or at the point where the stems meet the leaf.

4. Adhere the stamped and colored panel to its Blackberry Bliss mat.

Berry Harvest Thank You Card

Project Sheet - Aug 11 2023

Carol Buckalew

inkybeestampers@gmail.com

<https://www.inkybeestampers.com>



5. Cut a length of white Herringbone Ribbon measuring 4-1/4". Use the dark shade of an Old Olive Stampin' Blend to color the entire surface of the ribbon. **Caution: Protect your work surface before coloring the ribbon with the Stampin' Blend!** Allow the ribbon to dry for a few minutes. Position the ribbon approximately two thirds down from the top of the card. Wrap the ribbon horizontally around the colored and matted panel and secure the ends of the ribbon on the back side of this unit using a small amount of Stampin' Seal. Adhere the panel to the card front and center from top to bottom and left to right.
6. On a scrap piece of Blackberry Bliss cardstock, stamp the sentiment "I'm thankful" from the Autumn Leaves Stamp Set using VersaMark ink. Sprinkle copper Stampin' Emboss Powder over the stamped sentiment then use a Heat Tool to set the embossing powder. Allow the copper embossing to cool for a minute then use the rectangular sentiment label die from the Autumn Leaves Dies set to cut out.
7. On a scrap piece of Old Olive cardstock, stamp the image of the two leaves from the Autumn Leaves Stamp Set using Old Olive ink. Use the vein detail and stamp over the leaves using VersaMark ink. Sprinkle copper Stampin' Emboss Powder over the veins and use a Heat Tool to set the embossing powder. Allow the embossing to cool for a minute, then use the coordinating die from the Autumn Leaves Dies to cut out.

Berry Harvest Thank You Card

Project Sheet - Aug 11 2023

Carol Buckalew

inkybeestampers@gmail.com

<https://www.inkybeestampers.com>

8. Apply glue to only the bottom of the die cut leaves on the front side of the cut out and adhere the leaves to the center top of the sentiment label. Adhere the sentiment label and leaves to the card front using Stampin' Dimensionals. Position the top of the sentiment label slightly over the bottom edge of the wrapped ribbon on the card front.
9. Stamp a portion of the Berry Harvest stamp along approximately 1" of the bottom of the inside panel. I used several pieces of Post It Tape to mask off the area, then covered the remaining panel with a scrap piece of paper to protect the panel. Stamp the berry and leaf image on the exposed 1" along the bottom of the panel. Use the Berry Burst and Old Olive Stampin' Blends to color the image just as you did for the card front. Remove the masking paper or Post It Tape. Adhere the inside panel to the inside of the card.



10. On the envelope front, stamp the two-leaf image from the Autumn Leaves stamp set onto the lower right of the envelope front in Old Olive ink. Stamp the veins for the leaves using Copper Clay ink.
11. Adhere the coordinating piece of designer series paper to the envelope flap and trim the excess paper away from the flap.
12. Adhere several green Adhesive-Backed Speckled Dots to the card front.

Berry Harvest Thank You Card

Project Sheet - Aug 11 2023

Carol Buckalew

inkybeestampers@gmail.com

<https://www.inkybeestampers.com>



This completes the card! This was a fun card to make and perfect for Fall!

Products used to create this card are included on the next page. Item numbers for products that will be available on September 6 from the new Mini Catalog are listed in the supply list above.

Berry Harvest Thank You Card

Project Sheet - Aug 11 2023

Carol Buckalew
inkybeestampers@gmail.com
<https://www.inkybeestampers.com>



Berry Harvest
Cling Stamp Set -
161272

Price: \$20.00

Add to Cart



3/4" (1.9 Cm)
Herringbone
Ribbon - 161636

Price: \$8.50

Add to Cart



Metallics
Embossing
Powders - 155555

Price: \$18.00

Add to Cart



Heat Tool - 129053

Price: \$31.00

Add to Cart



Blackberry Bliss 8-
1/2" X 11"
Cardstock -
133675

Price: \$10.00

Add to Cart



Old Olive 8-1/2" X
11" Cardstock -
100702

Price: \$10.00

Add to Cart



Basic White 8-1/2"
X 11" Cardstock -
159276

Price: \$10.50

Add to Cart



Tuxedo Black
Memento Ink Pad -
132708

Price: \$6.50

Add to Cart



Versamark Pad -
102283

Price: \$9.50

Add to Cart



Old Olive Classic
Stampin' Pad -
147090

Price: \$9.00

Add to Cart



Copper Clay
Classic Stampin'
Pad - 161647

Price: \$9.00

Add to Cart



Old Olive Stampin'
Blends Combo
Pack - 154892

Price: \$10.00

Add to Cart



Berry Burst
Stampin' Blends
Combo Pack -
161681

Price: \$10.00

Add to Cart



Multipurpose
Liquid Glue -
110755

Price: \$5.50

Add to Cart



Stampin' Seal -
152813

Price: \$8.00

Add to Cart

Berry Harvest Thank You Card

Project Sheet - Aug 11 2023

Carol Buckalew

inkybeestampers@gmail.com

<https://www.inkybeestampers.com>



Stampin'
Dimensionals -
104430

Price: \$4.25

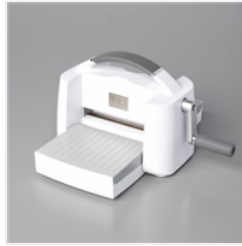
Add to Cart



Paper Trimmer -
152392

Price: \$26.00

Add to Cart



Stampin' Cut &
Emboss Machine -
149653

Price: \$128.00

Add to Cart