

Let the Adventure Begin Card

Project Sheet - Dec 3 2024

Carol Buckalew

inkybeestampers@gmail.com

<https://www.inkybeestampers.com>



Here is another sneak peek of upcoming products! This card was created using the **Adventure Together Bundle** and the **Bloom Impressions 12" x 12" Designer Series Paper**. The **Adventure Together Bundle** will be available for customer purchase from the Online Exclusives in the online store beginning on January 7. You can earn the **Bloom Impressions Designer Series Paper** with your purchases beginning on January 7 during Sale-A-Bration.

Supplies:

- Adventure Together Bundle (Item #164850 - Available Jan 7)
- Bloom Impressions 12" x 12" Designer Series Paper (Item #164944 - Available Jan 7)
- Cardstock: Shy Shamrock, Basic White
- Ink: Tuxedo Black Memento Ink, Shy Shamrock
- Stampin' Blends: Shy Shamrock, Shaded Spruce, Pool Party, Gray Granite, Daffodil Delight, Pumpkin Pie

1. Card Cuts:

- Card Base - Cut 1 Shy Shamrock cardstock to 8-1/2" x 5-1/2", score at 4-1/4"
- DSP Panel - Cut 1 cloud print from the Bloom Impressions Designer Series Paper to 5-1/2" x 4-1/4"

Let the Adventure Begin Card

Project Sheet - Dec 3 2024

Carol Buckalew

inkybeestampers@gmail.com

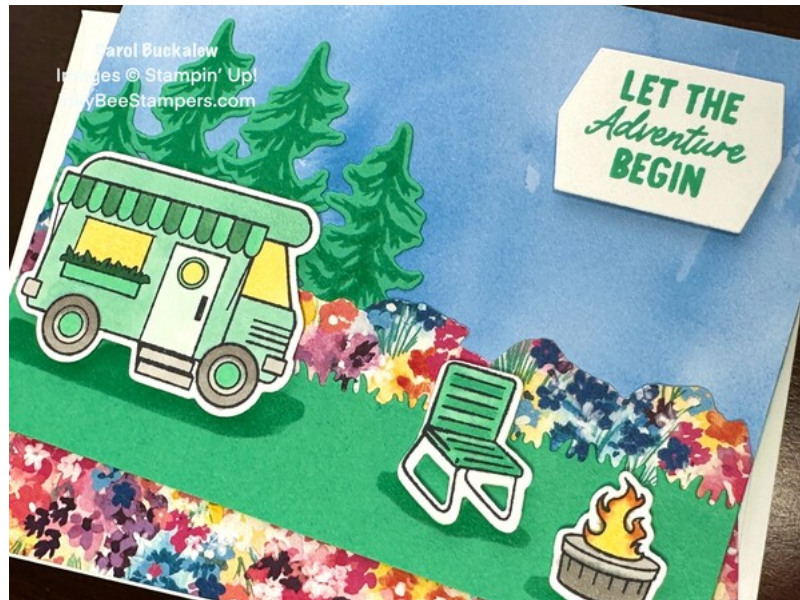
<https://www.inkybeestampers.com>

- DSP Strip - Cut 1 floral print from the Bloom Impressions Designer Series Paper to 5-1/2" x 1-1/4"
- Cardstock Strip - Cut 1 Shy Shamrock cardstock to 5-1/2" x 1-1/4"
- Stamped and Die Cut Trees - Scraps of Shy Shamrock cardstock
- Stamped, Colored and Die Cut Camper, Chair, and Fire Pit - Scraps of white cardstock
- Sentiment Label - Cut 1 Basic White cardstock to approximately 2" x 1-1/2"
- Inside Panel - Cut 1 Basic White cardstock to 5-1/4" x 4"
- Envelope Flap - Cut 1 coordinating piece of designer series paper to 6" x 2-1/4"

2. Prepare the front of the Card Front:

- Begin by adhering the cloud print Bloom Impressions Designer Series Paper panel to the card front using liquid glue.
- Use the grass die from the Adventure Together Dies to cut across the top of the Shy Shamrock cardstock strip measuring 5-1/2" x 1-1/4". You will need to position the die at the very top of the strip (long side from left to right) and you will need to run the die and panel through your Stampin' Cut & Emboss Machine two times to create the grass image along the top of the strip.
- From the floral designer series paper strip, use your paper snips or small scissors to fussy cut along the top (long) edge of the strip. I just fussy cut around the most prominent flowers on the print and tried to keep the fussy cut edge along the very top of the strip.
- Adhere the grass Shy Shamrock strip to the bottom edge of the fussy cut floral strip, then adhere this unit to the card front and on top of the cloud designer series paper.

Important Note: Do not apply adhesive to the top edge of the flower strip as you will later tuck trees under the flowers. The bottom edge of the grass Shy Shamrock strip should line up with the bottom edge of the card base.



- ## 3. On a scrap piece of Shy Shamrock cardstock, stamp the small and large pine trees from the Adventure Together Stamp Set two times each in Shy Shamrock ink. Use the coordinating dies from the Adventure Together Dies to cut out the trees. Adhere the trees behind the flower strip on the card front and position the trees to the left of the card front.

Let the Adventure Begin Card

Project Sheet - Dec 3 2024

Carol Buckalew

inkybeestampers@gmail.com

<https://www.inkybeestampers.com>

4. On scrap pieces of white cardstock, stamp the image of the camper, chair and fire pit using Tuxedo Black Memento Ink. Use Stampin' Blends in Shy Shamrock, Shaded Spruce, Pool Party, Daffodil Delight, and Gray Granite to color in the camper (refer to photos). Use the light and dark shades of Shy Shamrock Stampin' Blends to color the chair. Use Gray Granite, Daffodil Delight and Pumpkin Pie Stampin' Blends to color in the fire pit. Use the coordinating dies from the Adventure Together Dies to cut out the images. Adhere all three images to the card front using Stampin' Dimensionals. The camper is adhered to the left side of the card front and in front of the trees. Be sure that the camper's wheels are on the "grass" portion of the card. Adhere the chair and fire pit to the lower right side of the card front. Use the dark shade of a Shy Shamrock Stampin' Blend to draw in a shadow beneath the camper, chair and fire pit.
5. Stamp the "Let the Adventure begin" sentiment in Shy Shamrock ink onto a piece of white cardstock. Use the sentiment label die in the Adventure Together Dies to cut out the sentiment. Adhere the sentiment to the upper right of the card front using Stampin' Dimensionals.
6. Stamp the pine tree images several times onto the inside panel in Shy Shamrock ink. Be sure to vary the height of the trees. Adhere the panel to the inside of the card.



7. Repeat stamping of the large and small pine tree onto the envelope front using Shy Shamrock ink.
8. Adhere the coordinating piece of designer series paper to the envelope flap and use a small pair of scissors or paper snips to trim the excess paper away from the flap.

Let the Adventure Begin Card

Project Sheet - Dec 3 2024

Carol Buckalew

inkybeestampers@gmail.com

<https://www.inkybeestampers.com>



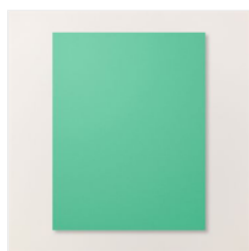
Carol Buckalew
Images © Stampin' Up!
InkyBeeStampers.com

This completes the card! How adorable is the Adventure Together Bundle? This would make a great card for someone moving into a new place, for someone leaving on a trip, or even for a newly married couple to send them congratulations!

Let the Adventure Begin Card

Project Sheet - Dec 3 2024

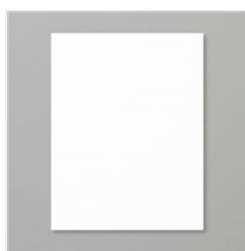
Carol Buckalew
inkybeestampers@gmail.com
<https://www.inkybeestampers.com>



[Shy Shamrock 8-1/2\" X 11\" Cardstock - 163795](#)

Price: \$11.50

[Add to Cart](#)



[Basic White 8-1/2\" X 11\" Cardstock - 159276](#)

Price: \$13.00

[Add to Cart](#)



[Tuxedo Black Memento Ink Pad - 132708](#)

Price: \$8.00

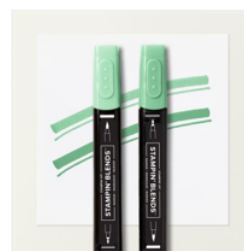
[Add to Cart](#)



[Shy Shamrock Classic Stampin' Pad - 163808](#)

Price: \$9.00

[Add to Cart](#)



[Shy Shamrock Stampin' Blends Combo Pack - 163825](#)

Price: \$11.00

[Add to Cart](#)



[Shaded Spruce Stampin' Blends Combo Pack - 154903](#)

Price: \$11.00

[Add to Cart](#)



[Pool Party Stampin' Blends Combo Pack - 154894](#)

Price: \$11.00

[Add to Cart](#)



[Gray Granite Stampin' Blends Combo Pack - 154886](#)

Price: \$11.00

[Add to Cart](#)



[Daffodil Delight Stampin' Blends Combo Pack - 154883](#)

Price: \$11.00

[Add to Cart](#)



[Pumpkin Pie Stampin' Blends Combo Pack - 154897](#)

Price: \$11.00

[Add to Cart](#)