

# Seasonal Branches Fun Fold Get Well Card

Project Sheet - Aug 22 2023

Carol Buckalew

[inkybeestampers@gmail.com](mailto:inkybeestampers@gmail.com)

<https://www.inkybeestampers.com>



Today's card was created using the **Seasonal Branches Stamp Set**, **All About Autumn 6" x 6" Specialty Paper**, and the Nested Essentials Dies. I'm a push-over for anything Fall! Let's get started!

## Supplies:

- Seasonal Branches Stamp Set
- All About Autumn 6" x 6" Specialty Designer Series Paper (Item #162178)
- Nested Essentials Dies
- Linen Thread
- Adhesive-Backed Speckled Dots (Item #162191)
- Cardstock: Crushed Curry, Very Vanilla
- Ink: Mossy Meadow, Pumpkin Pie, Copper Clay
- Stampin' Blends: Pumpkin Pie
- Adhesives: Multipurpose Liquid Glue, Stampin' Dimensionals, Mini Glue Dots
- Paper Trimmer
- Stampin' Cut & Emboss Machine

# Seasonal Branches Fun Fold Get Well Card

Project Sheet - Aug 22 2023

Carol Buckalew

[inkybeestampers@gmail.com](mailto:inkybeestampers@gmail.com)

<https://www.inkybeestampers.com>

## 1. Card Cuts:

- Card Base - Cut 1 Crushed Curry cardstock to 8-1/2" x 5-1/2". Score at 2-1/8" x 4-1/4"
- DSP Panels - Cut 2 woodland scene print to 5-3/8" x 2"
- DSP Panel - Cut 1 Mossy Meadow and metallic print to 5-3/8" x 2"
- DSP Rectangle - Cut 1 Mossy Meadow and metallic print to approximately 3-1/8" x 2-1/2"
- Sentiment Label - Cut 1 Crushed Curry cardstock to approximately 2-3/4" x 2"
- Inside Panel - Cut 1 Very Vanilla cardstock to 5-3/8" x 2"
- Envelope Flap - Cut 1 coordinating designer series paper to 6" x 2-1/4"

2. Fold and burnish the score lines on the card base. The 2-1/8" scoreline is a mountain fold and the 4-1/4" scoreline is a valley fold. With the card base fully open, adhere the woodland scene print panels from the All About Autumn Specialty Designer Series Paper to the left and right panels of the card base. **Important Note: This print is directional. I cut these panels so that when the card is fully closed the woodland scene would be continuous from one panel to the next.**

3. Adhere the Mossy Meadow and metallic print panel to the inside left panel (this is the 2nd panel from the left when the card base is fully open).

4. Use the Nested Essentials Dies to cut out the sentiment label and an additional rectangle from designer series paper that will sit behind the sentiment label.

- Cut 1 Crushed Curry rectangle using the 2nd to largest rectangle die.
- Cut 1 Mossy Meadow and metallic print (from the All About Autumn Specialty paper) rectangle using the largest rectangle die.

5. Stamp the following and follow any additional instructions:

- Using the Seasonal Branches Stamp Set, stamp the branch in Copper Clay ink onto the Crushed Curry sentiment label. Stamp the branch so that it is coming in from the upper left corner of the label.
- Use the single leaf image and stamp leaves onto the branches using Pumpkin Pie ink.
- Stamp the sentiment "You're in my thoughts" in Mossy Meadow ink across the bottom of the sentiment label.
- Use the light shade of a Pumpkin Pie Stampin' Blend to color in the stamped leaves. Use the dark shade of a Pumpkin Pie Stampin' Blend to add shadows where needed.

# Seasonal Branches Fun Fold Get Well Card

Project Sheet - Aug 22 2023

Carol Buckalew

[inkybeestampers@gmail.com](mailto:inkybeestampers@gmail.com)

<https://www.inkybeestampers.com>



5. Adhere the sentiment label to the larger Mossy Meadow and metallic rectangle using Stampin' Dimensionals. **Apply liquid glue to the back side of this unit on the left side only and adhere to the left panel of the card front.**
6. On the inside panel, stamp the sentiment "sending an abundance of Get-Well wishes" in Mossy Meadow ink. Use the single leaf image and stamp a few leaves towards the bottom corner of the panel. Use Pumpkin Pie Stampin' Blends to color in the leaves. Adhere the panel to the inside of the card (this will be the 3rd section from the left).

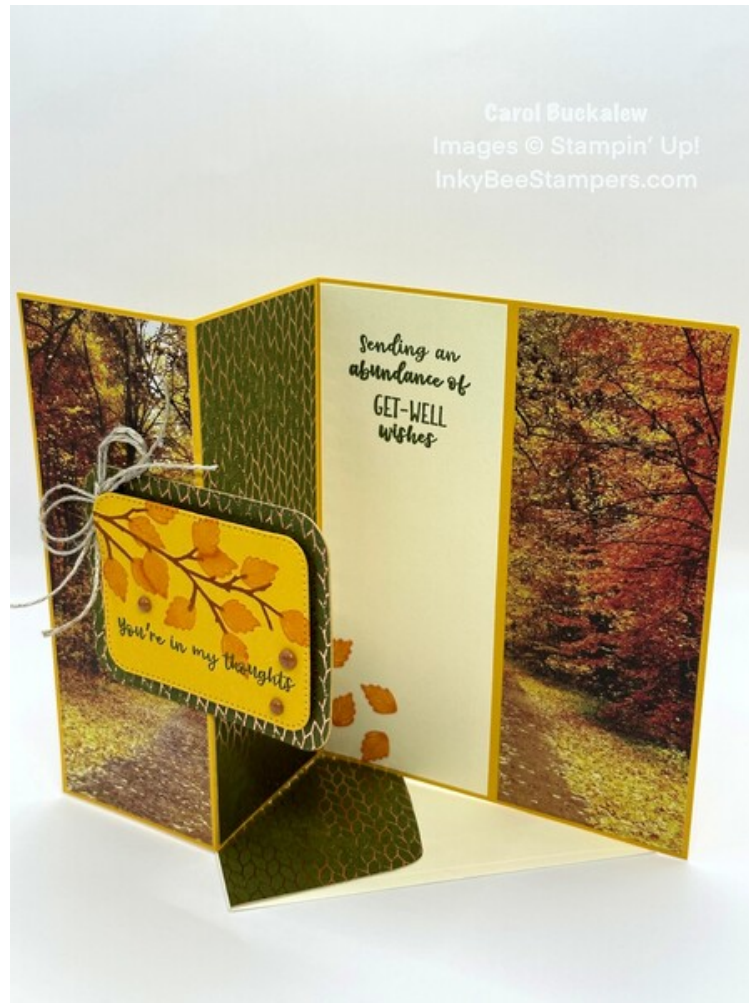
# Seasonal Branches Fun Fold Get Well Card

Project Sheet - Aug 22 2023

Carol Buckalew

[inkybeestampers@gmail.com](mailto:inkybeestampers@gmail.com)

<https://www.inkybeestampers.com>



7. On the lower corner of the envelope front, stamp the branch in Copper Clay ink. Then use the single leaf image and stamp leaves onto the branch in Pumpkin Pie ink. Use Pumpkin Pie Stampin' Blends to color in the leaves.
8. Adhere the piece of coordinating DSP to the envelope flap then trim the excess paper away from the flap.
9. Tie a double bow using Linen Thread and use a Mini Glue Dot to adhere the bow towards the upper left corner of the sentiment label.
10. Adhere multiple green Adhesive-Backed Speckled Dots to the card front. I adhered mine around the sentiment label.



# Seasonal Branches Fun Fold Get Well Card

Project Sheet - Aug 22 2023

Carol Buckalew

[inkybeestampers@gmail.com](mailto:inkybeestampers@gmail.com)

<https://www.inkybeestampers.com>



This completes the card! I made this card into a Get-Well card, but this could easily be a birthday card and would make a great masculine card as well!

Products used to create this card are included on the next page. Item numbers for products that will be available on September 6 are listed under the supply list above.

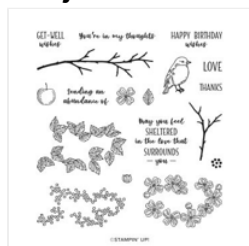
# Seasonal Branches Fun Fold Get Well Card

Project Sheet - Aug 22 2023

Carol Buckalew

[inkybeestampers@gmail.com](mailto:inkybeestampers@gmail.com)

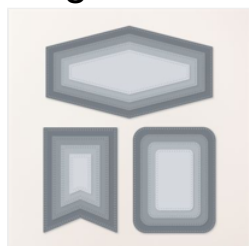
<https://www.inkybeestampers.com>



Seasonal Branches  
Photopolymer Stamp Set  
(English) - 161358

Price: \$25.00

Add to Cart



Nested Essentials  
Dies - 161597

Price: \$34.00

Add to Cart



Linen Thread -  
104199

Price: \$5.00

Add to Cart



Crushed Curry 8-  
1/2" X 11"  
Cardstock -  
131199

Price: \$10.00

Add to Cart



Very Vanilla 8-1/2"  
X 11" Cardstock -  
101650

Price: \$10.50

Add to Cart



Mossy Meadow  
Classic Stampin'  
Pad - 147111

Price: \$9.00

Add to Cart



Pumpkin Pie  
Classic Stampin'  
Pad - 147086

Price: \$9.00

Add to Cart



Copper Clay  
Classic Stampin'  
Pad - 161647

Price: \$9.00

Add to Cart



Pumpkin Pie  
Stampin' Blends  
Combo Pack -  
154897

Price: \$10.00

Add to Cart



Multipurpose  
Liquid Glue -  
110755

Price: \$5.50

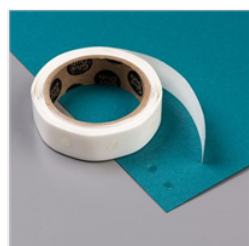
Add to Cart



Stampin'  
Dimensionals -  
104430

Price: \$4.25

Add to Cart



Mini Glue Dots -  
103683

Price: \$5.75

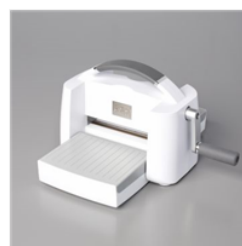
Add to Cart



Paper Trimmer -  
152392

Price: \$26.00

Add to Cart



Stampin' Cut &  
Emboss Machine -  
149653

Price: \$128.00

Add to Cart