

# Timeless Charm Birthday Card for Her

Project Sheet - Aug 14 2023

Carol Buckalew

[inkybeestampers@gmail.com](mailto:inkybeestampers@gmail.com)

<https://www.inkybeestampers.com>



Today's card was created using the Timeless Charm Bundle, 2022-2024 In Color Designer Series Paper and the Nested Essentials Dies. Let's get started!

Supplies:

- Timeless Charm Bundle
- 2022-2024 In Color 6" x 6" Designer Series Paper
- Nested Essentials Dies
- Baker's Twine Essentials Pack
- Rhinestone Basic Jewels
- Cardstock: Thick Basic White, Basic White, Sweet Sorbet
- Ink: Sweet Sorbet, Parakeet Party, Mossy Meadow
- Stampin' Blends: Sweet Sorbet, Parakeet Party, Mossy Meadow, Daffodil Delight
- Adhesives: Multipurpose Liquid Glue, Stampin' Dimensionals
- Paper Trimmer
- Stampin' Cut & Emboss Machine

# Timeless Charm Birthday Card for Her

Project Sheet - Aug 14 2023

Carol Buckalew

[inkybeestampers@gmail.com](mailto:inkybeestampers@gmail.com)  
<https://www.inkybeestampers.com>

## 1. Card Cuts

- Card Base - Cut 1 Thick Basic White cardstock to 8-1/2" x 5-1/2", score at 4-1/4"
- Outside & Inside Mats - Cut 2 Sweet Sorbet cardstock pieces to 5-3/8" x 4-1/8"
- DSP Panel - Cut 1 Sweet Sorbet polka dot print to 5-1/4" x 4"
- Scraps of Basic White for die cutting flowers, greenery and two hexagons
- Sentiment Label - Cut 1 Thick Basic White cardstock to 3" x 1/2"
- Inside Panel - Cut 1 Basic White cardstock to 5-1/4" x 4"
- Envelope Flap - Cut 1 coordinating piece of designer series paper to 6" x 2-1/4"

2. Adhere the designer series paper panel to one of the Sweet Sorbet mats, then adhere this unit to the card front.

3. Note that all of the die cut flowers and greenery were colored using Stampin' Blends rather than die cutting pieces from different colored cardstocks. Die cut the following from Basic White cardstock, then follow any additional directions.

- Using the Nested Essentials Dies, die cut a hexagon from the largest hexagon die and die cut a second hexagon using the second-to-largest hexagon die from Basic White cardstock.

On the smaller hexagon, use the dark shade of a Parakeet Party Stampin' Blend to flick ink onto the die cut hexagon. You do this by holding the marker cap in one hand and hold the marker in your other hand, then flick the brush tip of the marker off of the inside of the marker cap. Caution: Protect your work surface when using this technique.

- Die cut the tall flower image with two flowers, leaves and stem from Basic White cardstock.

Color the flower center using the dark shade of a Daffodil Delight Stampin' Blend. Color the flower petals using the light shade of a Sweet Sorbet Stampin' Blend. Use the dark shade of the same color to darken the insides of the petals. Color the stem and leaves using the light shade of a Parakeet Party Stampin' Blend.

- Die cut a single flower image from Basic White cardstock and color the flower as you did for the larger flower with stem (see above).
- Die cut one greenery image from Basic White cardstock and use the dark shade of a Mossy Meadow Stampin' Blend to color the die cut.
- Die cut the small grass image from white cardstock. Color the image using the dark shade of a Parakeet Party Stampin' Blend

4. Arrange the flowers and greenery onto the smaller die cut hexagon (the one with the ink splatter) and adhere all of the images to the hexagon using liquid glue, with the exception of the single flower. Adhere the single flower towards the bottom of the arranged flowers and greenery using Stampin' Dimensionals.

5. Adhere the large hexagon to the front of the card base, then adhere the smaller hexagon with the flowers over the larger hexagon using Stampin' Dimensionals and center from top to

# Timeless Charm Birthday Card for Her

Project Sheet - Aug 14 2023

Carol Buckalew

[inkybeestampers@gmail.com](mailto:inkybeestampers@gmail.com)

<https://www.inkybeestampers.com>

bottom and left to right.



6. From the Timeless Charm Stamp Set, stamp the sentiment "Happy birthday, my dear" in Sweet Sorbet ink onto the sentiment label. Cut an angle at each end of the sentiment label then adhere the label towards the bottom of the hexagons using Stampin' Dimensionals.
7. On the inside panel, second-generation stamp the dots using Parakeet Party ink multiple times in the lower left corner of the panel. Stamp the greenery image over the dots using Mossy Meadow ink. Adhere the panel to one of the Sweet Sorbet mats, then adhere this to the inside of the card.

# Timeless Charm Birthday Card for Her

Project Sheet - Aug 14 2023

Carol Buckalew

[inkybeestampers@gmail.com](mailto:inkybeestampers@gmail.com)

<https://www.inkybeestampers.com>



8. Second-generation stamp the same dots in Parakeet Party ink on the envelope front, then stamp the greenery image over top of the dots in Mossy Meadow ink.
9. Adhere the coordinating piece of designer series paper to the envelope flap and trim the excess paper away from the flap.
10. Use the dark shade of the Parakeet Party Stampin' Blend to color five Basic Rhinestone Jewels. Note that you must use a Stampin' Blend to color the rhinestones because a regular marker will not adhere to the surface. Adhere the rhinestones to the card front. I placed mine all around the flowers on the card front.
11. Tie a small bow from white Baker's Twine and tuck the bow under the single flower on the card front.

# Timeless Charm Birthday Card for Her

Project Sheet - Aug 14 2023

Carol Buckalew

[inkybeestampers@gmail.com](mailto:inkybeestampers@gmail.com)

<https://www.inkybeestampers.com>



This completes the card! You won't find the Timeless Charm Bundle in any catalog. This bundle is an Online Exclusive so you will only find it in the online store. Happy creating!

Products used to create today's card are included on the next page.



# Timeless Charm Birthday Card for Her

Project Sheet - Aug 14 2023

Carol Buckalew

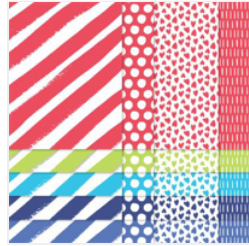
[inkybeestampers@gmail.com](mailto:inkybeestampers@gmail.com)  
<https://www.inkybeestampers.com>



Timeless Charm  
Bundle (English) -  
162263

Price: \$53.00

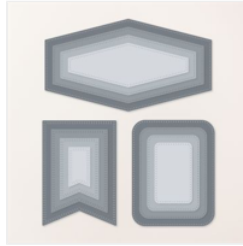
Add to Cart



2022-2024 In  
Color 6" X 6" (15.2  
X 15.2 Cm)  
Designer Series  
Paper - 161645

Price: \$12.50

Add to Cart



Nested Essentials  
Dies - 161597

Price: \$34.00

Add to Cart



Baker's Twine  
Essentials Pack -  
155475

Price: \$11.00

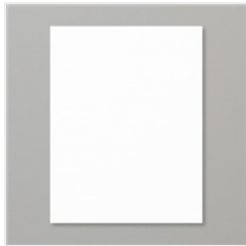
Add to Cart



Rhinestone Basic  
Jewels - 144220

Price: \$6.00

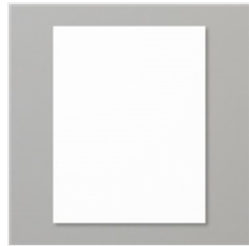
Add to Cart



Basic White 8-1/2"  
X 11" Thick  
Cardstock -  
159229

Price: \$9.00

Add to Cart



Basic White 8-1/2"  
X 11" Cardstock -  
159276

Price: \$10.50

Add to Cart



Sweet Sorbet 8-1/2"  
X 11"  
Cardstock -  
159268

Price: \$10.00

Add to Cart



Basic White  
Medium Envelopes  
- 159236

Price: \$8.50

Add to Cart



Sweet Sorbet  
Classic Stampin'  
Pad - 159216

Price: \$9.00

Add to Cart



Parakeet Party  
Classic Stampin'  
Pad - 159208

Price: \$9.00

Add to Cart



Mossy Meadow  
Classic Stampin'  
Pad - 147111

Price: \$9.00

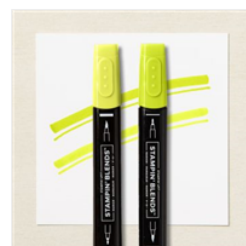
Add to Cart



Sweet Sorbet  
Stampin' Blends  
Combo Pack -  
159224

Price: \$10.00

Add to Cart



Parakeet Party  
Stampin' Blends  
Combo Pack -  
159220

Price: \$10.00

Add to Cart



Mossy Meadow  
Stampin' Blends  
Combo Pack -  
154890

Price: \$10.00

Add to Cart

# Timeless Charm Birthday Card for Her

Project Sheet - Aug 14 2023

Carol Buckalew

[inkybeestampers@gmail.com](mailto:inkybeestampers@gmail.com)  
<https://www.inkybeestampers.com>



Daffodil Delight  
Stampin' Blends  
Combo Pack -  
154883

Price: \$10.00

Add to Cart



Multipurpose  
Liquid Glue -  
110755

Price: \$5.50

Add to Cart



Stampin'  
Dimensionals -  
104430

Price: \$4.25

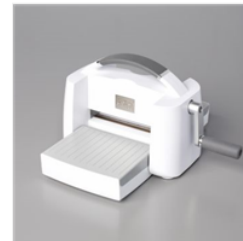
Add to Cart



Paper Trimmer -  
152392

Price: \$26.00

Add to Cart



Stampin' Cut &  
Emboss Machine -  
149653

Price: \$128.00

Add to Cart