

Shining Christmas Collar Fun Fold Holiday Card

Project Sheet - Oct 4 2023

Carol Buckalew

inkybeestampers@gmail.com
<https://www.inkybeestampers.com>



I used the **Shining Christmas 12" x 12" Specialty Designer Series Paper** to create today's card. This paper has to be seen to be appreciated! The paper contains shiny foil accents with the reverse prints in Cherry Cobbler and white...it is gorgeous! I chose this card design to show off both sides of the paper! This paper is an Online Exclusive and can be viewed in the Online Store. Let's get to the card!

Supplies:

- Shining Christmas 12" x 12" Specialty Designer Series Paper
- Christmas Classics Stamp Set
- Real Red & Garden Green Ribbon Combo Pack
- Stylish Shapes Dies
- Rhinestone Basic Jewels
- White Stampin' Emboss Powder
- Heat Tool
- Cardstock: Mossy Meadow, Basic White
- Ink: VersaMark Ink, Mossy Meadow, Cherry Cobbler

Shining Christmas Collar Fun Fold Holiday Card

Project Sheet - Oct 4 2023

Carol Buckalew

inkybeestampers@gmail.com

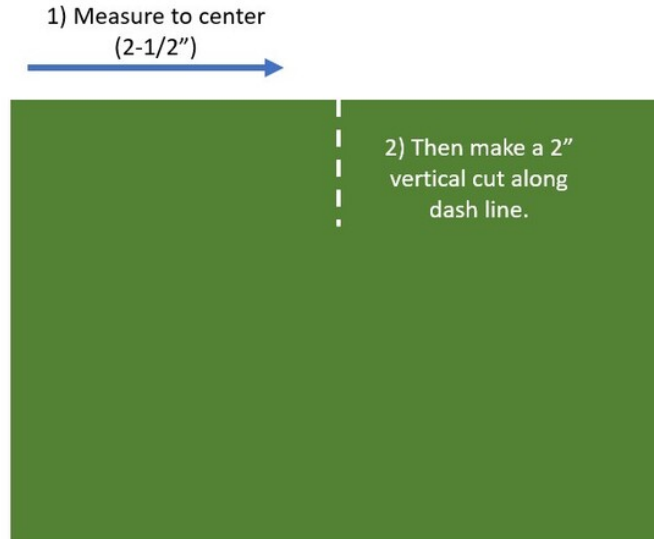
<https://www.inkybeestampers.com>

- Stampin' Blends: Cherry Cobbler
- Adhesives: Multipurpose Liquid Glue, Stampin' Dimensionals, Stampin' Seal, Mini Glue Dots
- Paper Trimmer
- Stampin' Cut & Emboss Machine

1. Card Cuts:

- Card Base - Cut 1 Mossy Meadow cardstock to 11" x 4-1/4", score at 5-1/2"
- Mat - Cut 1 Basic White cardstock to 5-1/4" x 4"
- DSP Panel - Cut 1 holly and berry print (Shining Christmas DSP) to 5" x 3-3/4"
On long side of panel, measure to middle of panel at 2-1/2", then make a 2" vertical cut at the 2-1/2" mark
- Sentiment Label - Cut 1 Mossy Meadow cardstock to approximately 2-3/4" x 2-3/4"
- Inside Panel - Cut 1 Basic White cardstock to 5-1/4" x 4"
- Envelope Flap - Cut 1 coordinating piece of designer series paper to 6" x 2-1/4"

2. Cut out the DSP Panel and mark the middle point on the long edge at 2-1/5", then make a 2" vertical cut (see photo on left below). Carefully fold back the corners where you just made the 2" cut and create a crease or fold on each side (see photo on right below). Note that the folded back edge of each side is parallel with the edges of the white mat.



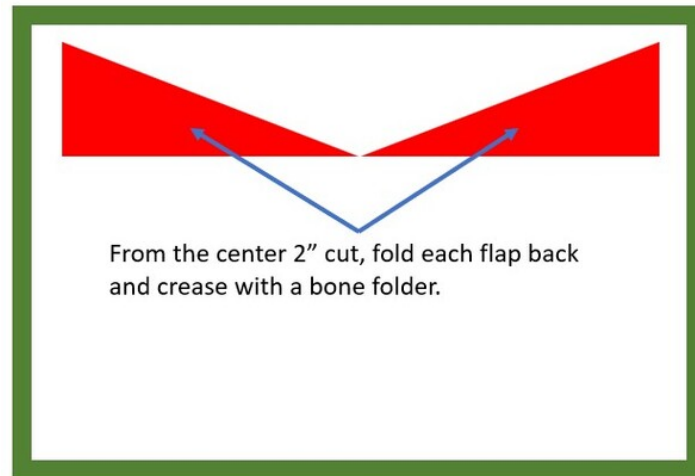
Shining Christmas Collar Fun Fold Holiday Card

Project Sheet - Oct 4 2023

Carol Buckalew

inkybeestampers@gmail.com

<https://www.inkybeestampers.com>



3. Stamp on the Basic White Mat:

- Lay the DSP Panel onto the white mat so that there is an equal reveal around all sides (do not adhere together yet!). The "V" fold will be on the right.
- Then, make light pencil lines at the "V" created by the folded back flaps.
- Remove the DSP Panel.
- Using the Christmas Classics Stamp Set, stamp the pine bough image in the "V" shape created by the light pencil marks. I second generation stamped the pine bough two times in Mossy Meadow ink, then first generation stamped the same image again.
- Erase the pencil marks.

4. Adhere the DSP Panel to the Basic White mat. Wrap a length of Real Red Ribbon around the center of this unit and secure the ends of the ribbon on the back of the mat using a small amount of Stampin' Seal, then adhere to the front of the card base.

Shining Christmas Collar Fun Fold Holiday Card

Project Sheet - Oct 4 2023

Carol Buckalew

inkybeestampers@gmail.com

<https://www.inkybeestampers.com>



5. Use the second to largest circle die from the Stylish Shapes Dies and cut out 1 circle from Mossy Meadow cardstock. Stamp the sentiment "Deck the Halls" from the Christmas Classics Stamp Set in VersaMark ink, sprinkle with white embossing powder, then use a Heat Tool to set the embossing powder. Adhere the sentiment label on the left side of the card front using Stampin' Dimensionals (over top of the ribbon) and center the circle label from top to bottom.
6. Use two lengths of Real Red Ribbon to tie a double bow. Adhere the bow just to the right of the round sentiment label and over top of the wrapped ribbon. Adhere using Mini Glue Dots.
7. On the inside panel, first and second-generation stamp the pine bough image from the Christmas Classics Stamp Set onto the upper left and lower right corners in Mossy Meadow ink. Stamp the sentiment "Happy Holidays" in Cherry Cobbler ink, then stamp the decorative dashed line below the sentiment in Cherry Cobbler ink. Adhere the panel to the inside of the card.

Shining Christmas Collar Fun Fold Holiday Card

Project Sheet - Oct 4 2023

Carol Buckalew

inkybeestampers@gmail.com

<https://www.inkybeestampers.com>



8. Repeat first and second-generation stamping of the pine bough onto the lower left corner of the envelope front in Mossy Meadow ink.
9. Adhere the coordinating piece of designer series paper to the envelope flap and trim the excess paper away from the flap with paper snips.
10. Use the dark shade of a Cherry Cobbler Stampin' Blend to color multiple Rhinestone Basic Jewels. Once dry, place the rhinestones on the card front. I placed a large rhinestone onto the left side of the sentiment label and placed four smaller rhinestones around the stamped pine boughs.

Shining Christmas Collar Fun Fold Holiday Card

Project Sheet - Oct 4 2023

Carol Buckalew

inkybeestampers@gmail.com
<https://www.inkybeestampers.com>



This completes the card! This Collar Fun Fold is perfect for showing off the pretty Shining Christmas Specialty Designer Series Paper!

Products used to create this card are included on the next page along with links that will take you to each item in my online store.

Shining Christmas Collar Fun Fold Holiday Card

Project Sheet - Oct 4 2023

Carol Buckalew

inkybeestampers@gmail.com
<https://www.inkybeestampers.com>



Shining Christmas
12" X 12" (30.5 X
30.5 Cm) Specialty
Designer Series
Paper - 162354

Price: \$15.00

Add to Cart



Christmas Classics
Photopolymer
Stamp Set
(English) - 161970

Price: \$21.00

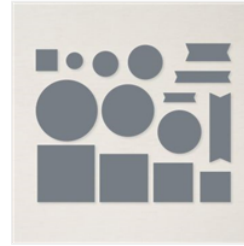
Add to Cart



Real Red &
Garden Green 3/8"
(1 Cm) Ribbon
Combo Pack -
159577

Price: \$7.50

Add to Cart



Stylish Shapes
Dies - 159183

Price: \$30.00

Add to Cart



Rhinstone Basic
Jewels - 144220

Price: \$6.00

Add to Cart



Basics Embossing
Powders - 155554

Price: \$18.00

Add to Cart



Heat Tool - 129053

Price: \$31.00

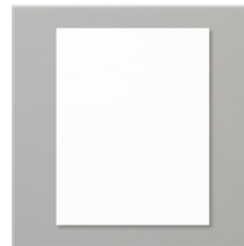
Add to Cart



Mossy Meadow 8-
1/2" X 11"
Cardstock -
133676

Price: \$10.00

Add to Cart



Basic White 8-1/2"
X 11" Cardstock -
159276

Price: \$10.50

Add to Cart



Basic White
Medium Envelopes
- 159236

Price: \$8.50

Add to Cart



VersaMark Pad -
102283

Price: \$9.50

Add to Cart



Mossy Meadow
Classic Stampin'
Pad - 147111

Price: \$9.00

Add to Cart



Cherry Cobbler
Classic Stampin'
Pad - 147083

Price: \$9.00

Add to Cart



Cherry Cobbler
Stampin' Blends
Combo Pack -
154880

Price: \$10.00

Add to Cart



Multipurpose
Liquid Glue -
110755

Price: \$5.50

Add to Cart

Shining Christmas Collar Fun Fold Holiday Card

Project Sheet - Oct 4 2023

Carol Buckalew

inkybeestampers@gmail.com

<https://www.inkybeestampers.com>



Stampin'
Dimensionals -
104430

Price: \$4.25

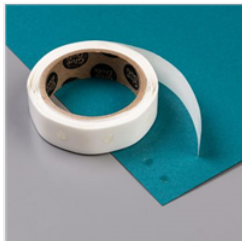
Add to Cart



Stampin' Seal -
152813

Price: \$8.00

Add to Cart



Mini Glue Dots -
103683

Price: \$5.75

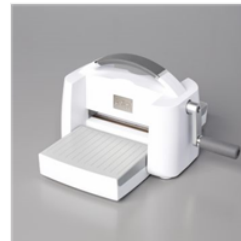
Add to Cart



Paper Trimmer -
152392

Price: \$26.00

Add to Cart



Stampin' Cut &
Emboss Machine -
149653

Price: \$128.00

Add to Cart