

Lazy Days Welcome Card - Sneak Peek

Project Sheet - Apr 10 2023

Carol Buckalew

inkybeestampers@gmail.com

<https://www.inkybeestampers.com>



Here is another sneak peek of a card using upcoming products from the 2023-2024 Annual Catalog! I created this card using the Lazy Days Bundle. You can almost feel the cool shade of this front porch on a hot summer's day! Welcome a new neighbor, club member, or team member with this card. Let's get started!

Supplies

- Lazy Days Bundle (161343)
- Stylish Shapes Dies
- Bright & Beautiful 6" x 6" Designer Series Paper (161449)
- 2023-2025 In Color Dots (161620)
- Paper: Basic White, Pecan Pie, Garden Green
- Ink: Tuxedo Black Memento Ink, Pecan Pie, Night of Navy
- Stampin' Blends: Balmy Blue, Boho Blue, Daffodil Delight, Granny Apple Green, Pecan Pie, Copper Clay, Coler Lifter
- Adhesives: Multipurpose Liquid Glue, Stampin' Dimensionals
- Paper Trimmer

Lazy Days Welcome Card - Sneak Peek

Project Sheet - Apr 10 2023

Carol Buckalew

inkybeestampers@gmail.com

<https://www.inkybeestampers.com>

- Stampin' Cut & Emboss Machine

1. Card Cuts:

- Card Base - Cut 1 Pecan Pie cardstock to 8-1/2" x 5-1/2", score at 4-1/4"
- DSP Panel - Cut 1 Bright & Beautiful DSP in a Misty Moonlight wide stripe to 5-3/8" x 4-1/8"
- Scraps of Basic White, Pecan Pie and Garden Green
- Inside Panel - Cut 1 Basic White cardstock to 5-3/8" x 4-1/8"
- Envelope - Cut 1 coordinating DSP to 6" x 2-1/2"

2. Create the following images following the specific instructions for each below. Use coordinating dies from the Lazy Days Dies set to cut out the images:

- Die cut 1 porch post with trim from white cardstock. Use a Balmy Blue Stampin' Blend to color a portion of the trim (leave some white), and color the post using a combination of Stampin' Blends in Balmy Blue and Boho Blue.
- On a piece of white cardstock, stamp 1 hanging basket using Tuxedo Black Memento ink. Use Stampin' Blends in Garden Green and Boho Blue to color. Use the Color Lifter to leave a slight highlight on the middle of the hanging basket.
- On a piece of white cardstock, stamp 1 bird house in Tuxedo Black Memento ink. Use Stampin' Blends in Pecan Pie and Boho Blue to color. Use the Color Lifter to leave a highlighted area around the bird house opening.
- On a piece of white cardstock, stamp 1 potted plant in Tuxedo Black Memento ink. Use Stampin' Blends in Pecan Pie to color in the wood slats of the barrel planter. Use Copper Clay to color in the bands around the planter. Use a combination of Daffodil Delight and Garden Green Stampin' Blends to color in the leaves. Use the Color Lifter to leave a highlight on the Copper Clay bands on the barrel.
- On a piece of white cardstock, stamp 1 rug in Night of Navy ink. Use Stampin' Blends in Balmy Blue and Boho Blue to color in the rug.
- Die cut 1 vine from Garden Green cardstock
- Die cut 1 rocking chair from Pecan Pie cardstock. Use the dark shade of a Pecan Pie Stampin' Blend to add some shadows to the frame of the rocking chair.

Lazy Days Welcome Card - Sneak Peek

Project Sheet - Apr 10 2023

Carol Buckalew

inkybeestampers@gmail.com

<https://www.inkybeestampers.com>



3. Adhere the porch post with trim to the top of the DSP Panel. Make sure that the white stripe on the DSP Panel is at the bottom. Line the top of the trim up with the top edge of the DSP panel. You will need to cut a very small portion of the trim flush with the DSP panel. Adhere the panel to the card front.
4. Dry fit the components to the card front and adhere as indicated below:
 - Adhere the rug using glue to the white stripe area of the DSP panel. Center the rug between the porch post and the left edge of the card front.
 - Adhere the hanging plant on the upper left of the card using glue. Tuck the ring of the planter just under the porch trim.
 - Adhere the vine to the porch post using glue. Make sure the base of the vine is towards the bottom of the porch post.
 - Adhere the rocking chair to the card front using glue so that the chair is sitting on the left side of the rug. The top of the chair slightly overlaps the hanging basket.
 - Adhere the potted plant to the card front using Stampin' Dimensionals. Position the plant so that it slightly overlaps the base of the porch post.
 - Adhere the birdhouse to the card front using glue and position next to the potted plant so that it is sitting on the corner of the rug.
 - Stamp the "welcome" sentiment onto a piece of white cardstock and die cut using the 2nd to smallest die from the Stylish Shapes Dies. Adhere the sentiment label to the card front using Stampin' Dimensionals.
5. Stamp the potted plant on the Inside Panel and the envelope front using Tuxedo Black

Lazy Days Welcome Card - Sneak Peek

Project Sheet - Apr 10 2023

Carol Buckalew

inkybeestampers@gmail.com

<https://www.inkybeestampers.com>

Memento ink. Use Stampin' Blends in Daffodil Delight and Garden Green to color the leaves. Use Pecan Pie and Copper Clay to color the barrel planter.

6. Adhere the Inside Panel to the inside of the card.



7. Adhere the piece of coordinating DSP to the envelope flap and trim the excess paper away from the flap.

Lazy Days Welcome Card - Sneak Peek

Project Sheet - Apr 10 2023

Carol Buckalew

inkybeestampers@gmail.com

<https://www.inkybeestampers.com>



This completes the card! This is such a fun set to create a welcoming and peaceful scene with!

Additional products used to create this card are included on the next page. Item numbers for products used from the new Annual Catalog are included at the top of this page under "Supplies".

Lazy Days Welcome Card - Sneak Peek

Carol Buckalew

inkybeestampers@gmail.com

<https://www.inkybeestampers.com>

Project Sheet - Apr 10 2023



Stylish Shapes
Dies - 159183

Price: \$30.00

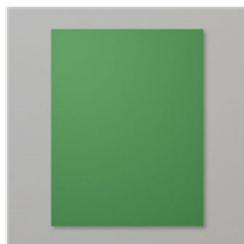
Add to Cart



Basic White 8-1/2"
X 11" Cardstock -
159276

Price: \$10.25

Add to Cart



Garden Green 8-
1/2" X 11"
Cardstock -
102584

Price: \$9.25

Add to Cart



Basic White
Medium Envelopes
- 159236

Price: \$7.50

Add to Cart



Tuxedo Black
Memento Ink Pad -
132708

Price: \$6.00

Add to Cart



Night Of Navy
Classic Stampin'
Pad - 147110

Price: \$8.00

Add to Cart



Balmy Blue
Stampin' Blends
Combo Pack -
154830

Price: \$9.00

Add to Cart



Daffodil Delight
Stampin' Blends
Combo Pack -
154883

Price: \$9.00

Add to Cart



Granny Apple
Green Stampin'
Blends Combo
Pack - 154885

Price: \$9.00

Add to Cart



Stampin' Blends
Color Lifter -
144608

Price: \$4.50

Add to Cart



Multipurpose
Liquid Glue -
110755

Price: \$4.00

Add to Cart



Stampin'
Dimensionals -
104430

Price: \$4.25

Add to Cart



Paper Trimmer -
152392

Price: \$25.00

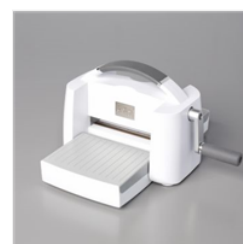
Add to Cart



Paper Snips
Scissors - 103579

Price: \$11.00

Add to Cart



Stampin' Cut &
Emboss Machine -
149653

Price: \$125.00

Add to Cart