

Blessings of Home Congratulations Card

Project Sheet

Carol Buckalew

inkybeestampers@gmail.com

<https://www.inkybeestampers.com>



For today's Amy's Inkin Krew Team Blog Hop I created this card using the ***Blessings of Home Stamp Set***, ***Flowers of Home Dies***, the ***Brick & Mortar 3D Embossing Folder*** and the ***Deckled Rectangles Dies***. Read on for all the details...

1. Card Cuts:

- Card Base - Cut 1 Sweet Sorbet cardstock to 11" x 4-1/4", score at 5-1/2"
- White Panel - Cut 1 Basic White cardstock to 5" x 3-3/4"
- Black Mat - Cut 1 Basic Black cardstock to 5-1/8" x 3-7/8"
- Scrap of white cardstock for stamping and die cutting flower image
- Inside Panel - Cut 1 Basic White cardstock to 5-1/4" x 4"
- Scraps of white cardstock for die cutting sprigs
- Sentiment Label - Cut 1 Basic White cardstock to 2-1/2" x 1-1/4"
- Cut 1 coordinating DSP from the ***Tea Boutique 6" x 6" Designer Series Paper*** (in Sweet Sorbet pattern) to 6" x 2-3/4"

2. Start by embossing the white panel measuring 5" x 3-3/4" using the Brick & Mortar 3D Embossing Folder. On the back left of the embossed panel, use a small amount of Stampin'

Blessings of Home Congratulations Card

Project Sheet

Carol Buckalew

inkybeestampers@gmail.com

<https://www.inkybeestampers.com>

Seal and wrap Sweet Sorbet Metallic Woven Ribbon around the embossed panel twice, securing ends to the Stampin' Seal.

3. Using glue, adhere the embossed panel to the black mat. Then, adhere this unit to the card front.



4. On a piece of scrap white cardstock, stamp the larger flower bouquet image from the Blessings of Home Stamp Set using Tuxedo Black Memento ink. Use the following Stampin' Blends to color in the image: Granny Apple Green, Mossy Meadow, Balmy Blue, Daffodil Delight, Pale Papaya, Sweet Sorbet, and Pumpkin Pie. Refer to the photo at the top of the page as a coloring guide. For all coloring of leaves and flowers I first used the lightest shade of Stampin' Blends, then came back in with the darker shade to darken wherever a shadow would fall. There is one exception to this, on the Sweet Sorbet flowers, I colored the centers in with the dark shade of Pale Papaya, then added the light Sweet Sorbet Stampin' Blends in the center and blended with the dark shade of Pale Papaya. Die cut the image using the coordinating die from the Flowers of Home Dies.
5. Using scraps of white cardstock, die cut 3 to 4 sprigs from the Flowers of Home Dies set. Set these aside for now.
6. Using Tuxedo Black Memento ink, stamp the smaller flower bouquet image from the Blessings of Home stamp set, and stamp this image on the lower right corner of the inside panel and on the front of the envelope. Color these images using the same Stampin' Blends colors as in Step #4 above.

Blessings of Home Congratulations Card

Project Sheet

Carol Buckalew

inkybeestampers@gmail.com

<https://www.inkybeestampers.com>

7. The sentiment on the front of the card - "What a Beautiful Day for Love" was used from the Blessings of Home stamp set. I used a piece of Washi tape to cover the words "for Love", inked the stamp in Sweet Sorbet ink, removed the Washi tape, then stamped the sentiment onto the sentiment label. I then used the smallest die from the Deckled Rectangles Dies to cut out the sentiment.
8. Using the sentiment "Let's celebrate everything" from the Eden's Garden Stamp Set, stamp on the inside panel in Sweet Sorbet ink. Adhere the inside panel to the inside of the card base.



9. Using Stampin' Dimensionals, adhere the large, die cut flower bouquet to the card front. Place in the upper left corner, over top of the ribbon at an angle.
10. Using glue on just the ends of the white die cut sprigs, tuck these under the large flower bouquet. I added two to the upper right and one to the lower left of the flower bouquet.
11. Use Stampin' Dimensionals to adhere the sentiment label to the card front, placing in the lower right corner.
12. Using the piece of 6" x 2-3/4" piece of coordinating DSP, adhere to the envelope flap and fussy cut around the flap to finish off the envelope.

Blessings of Home Congratulations Card

Project Sheet

Carol Buckalew

inkybeestampers@gmail.com

<https://www.inkybeestampers.com>



This completes the card. Nothing celebrates summer like brightly colored flowers! What's your favorite summer flower?

Products used to create this card are included on the next page.

Blessings of Home Congratulations Card

Project Sheet

Carol Buckalew

inkybeestampers@gmail.com

<https://www.inkybeestampers.com>



Blessings Of Home Cling Stamp Set (English) - 157930

Price: \$25.00

Add to Cart



Flowers Of Home Dies - 157938

Price: \$32.00

Add to Cart



Eden's Garden Cling Stamp Set (English) - 157823

Price: \$23.00

Add to Cart



Deckled Rectangles Dies - 159173

Price: \$30.00

Add to Cart



Tea Boutique 6" X 6" (15.2 X 15.2 Cm) Designer Series Paper - 158659

Price: \$12.00

Add to Cart



Brick & Mortar 3D Embossing Folder - 149643

Price: \$10.00

Add to Cart



Sweet Sorbet 1/8" (3.2 Mm) Metallic Woven Ribbon - 159200

Price: \$9.00

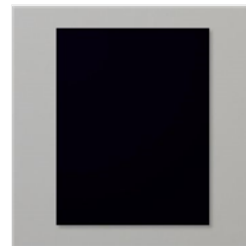
Add to Cart



Sweet Sorbet 8-1/2" X 11" Cardstock - 159268

Price: \$9.25

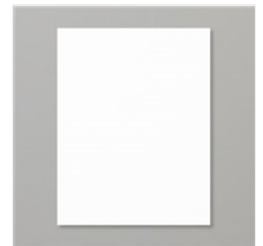
Add to Cart



Basic Black 8-1/2" X 11" Cardstock - 121045

Price: \$9.25

Add to Cart



Basic White 8-1/2" X 11" Cardstock - 159276

Price: \$10.25

Add to Cart



Basic White Medium Envelopes - 159236

Price: \$7.50

Add to Cart



Tuxedo Black Memento Ink Pad - 132708

Price: \$6.00

Add to Cart



Sweet Sorbet Classic Stampin' Pad - 159216

Price: \$8.00

Add to Cart



Granny Apple Green Stampin' Blends Combo Pack - 154885

Price: \$9.00

Add to Cart



Mossy Meadow Stampin' Blends Combo Pack - 154890

Price: \$9.00

Add to Cart

Blessings of Home Congratulations Card

Project Sheet

Carol Buckalew

inkybeestampers@gmail.com

<https://www.inkybeestampers.com>



Balmy Blue
Stampin' Blends
Combo Pack -
154830

Price: \$9.00

Add to Cart



Daffodil Delight
Stampin' Blends
Combo Pack -
154883

Price: \$9.00

Add to Cart



Pale Papaya
Stampin' Blends
Combo Pack -
155519

Price: \$9.00

Add to Cart



Sweet Sorbet
Stampin' Blends
Combo Pack -
159224

Price: \$9.00

Add to Cart



Pumpkin Pie
Stampin' Blends
Combo Pack -
154897

Price: \$9.00

Add to Cart



Multipurpose
Liquid Glue -
110755

Price: \$4.00

Add to Cart



Stampin' Seal -
152813

Price: \$8.00

Add to Cart



Stampin'
Dimensionals -
104430

Price: \$4.25

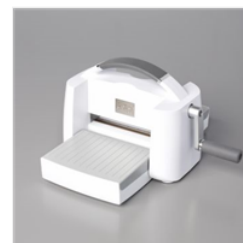
Add to Cart



Paper Trimmer -
152392

Price: \$25.00

Add to Cart



Stampin' Cut &
Emboss Machine -
149653

Price: \$125.00

Add to Cart