

Bold Bouquet Friendship Card

Project Sheet - Jun 7 2023

Carol Buckalew

inkybeestampers@gmail.com

<https://www.inkybeestampers.com>



I used the **Bold Bouquet Bundle** and **Delightfully Eclectic 12" x 12" Designer Series Paper** to make today's card. The shading on the flowers was accomplished using a Blender Pen. I used a Blender Pen for shading instead of Stampin' Blends because a Blender Pen gives you a little more control on the amount of shading you add to very small images or sections of images. Let's get started!

Supplies:

- Bold Bouquet Bundle
- Delightfully Eclectic 12" x 12" Designer Series Paper
- 2-3/8" Circle Punch
- Ribbon Duo Combo Pack
- Rhinestone Basic Jewels
- Blender Pen
- Paper: Very Vanilla, Lemon Lime Twist, Early Espresso
- Ink: Early Espresso, Daffodil Delight, Pumpkin Pie
- Stampin' Blends: Lemon Lime Twist

Bold Bouquet Friendship Card

Project Sheet - Jun 7 2023

Carol Buckalew

inkybeestampers@gmail.com

<https://www.inkybeestampers.com>

- Adhesives: Multipurpose Liquid Glue, Stampin' Dimensionals, Mini Glue Dots
- Paper Trimmer
- Stampin' Cut & Emboss Machine

1. Card Cuts:

- Card Base - Cut 1 Lemon Lime Twist cardstock to 8-1/2" x 5-1/2", score at 4-1/4"
- Outside & Inside Mats - Cut 2 Early Espresso cardstock to 5-3/8" x 4-1/8"
- DSP Panel - Cut 1 white and Crushed Curry dot print from the Delightfully Eclectic DSP to 5-1/4" x 4"
- Circle - Cut 1 Early Espresso to approximately 3" x 2-1/2"
- Scraps of Very Vanilla and Lemon Lime Twist for stamping and die cutting buds, flowers and leaves.
- Inside Panel - Cut 1 Very Vanilla cardstock to 5-1/4" x 4"
- Envelope Flap - Cut 1 coordinating DSP to 6" x 2-1/2"

2. On the 5-1/4" x 4" DSP Panel, stamp the sentiment "For a fabulous friend" in Early Espresso ink onto the bottom of the panel. Adhere the DSP Panel to one of the Early Espresso mats. Use a length of Lemon Lime Twist ribbon from the Ribbon Duo Combo Pack, and wrap the ribbon around the top of the adhered panels approximately 1-1/4" from the top of the panel and tie a bow on the right side of the panel. **Do not adhere this unit to the card front yet in case you need to adjust the ribbon!**

3. Punch 1 circle using the 2-3/8" Circle Punch from Early Espresso cardstock.

4. On a scrap of Very Vanilla cardstock, stamp 1 large flower, 1 medium flower and 1 small flower in Daffodil Delight ink. Stamp 1 2-bud image and 1 3-bud image in Daffodil Delight ink. **Note: These next steps will use a Blender Pen to shade the flowers and buds. It is recommended that you have a scrap piece of paper handy so you can scribble on the scrap paper to determine how dark the ink is on the Blender Pen before adding to your project. If you are not accustomed to using a Blender Pen for shading, you can practice on a scrap piece of paper by stamping a flower image and then using the Blender Pen to shade the image with a darker ink before working on your finished project images.**

- Use the dark shade of a Lemon Lime Twist Stampin' Blend to color over the stems and the tops of the buds - coloring over the Daffodil Delight ink. Using a Blender Pen, dip the tip of the pen onto the edge of a Pumpkin Pie stamp pad and lightly shade the buds.
- Using a Blender Pen, dip the tip of the pen onto the edge of a Pumpkin Pie stamp pad and shade the flower petals on all three flowers. I shaded with Pumpkin Pie in all areas of the petals that I thought would have a shadow (such as petals sitting behind other petals).

Bold Bouquet Friendship Card

Project Sheet - Jun 7 2023

Carol Buckalew

inkybeestampers@gmail.com

<https://www.inkybeestampers.com>



5. Using the Bold Bouquet Dies, cut out the images from Step #4 above. Additionally, die cut two leaf images from Lemon Lime Twist cardstock using the Bold Bouquet Dies.
6. Arrange the die cut leaves, flowers and buds onto the Early Espresso circle. Refer to photos for placement. All pieces were adhered to the circle using liquid glue with the exception of the smallest flower. I used Stampin' Blends to adhere the smallest flower to the circle and used a Mini Glue Dot where the smallest flower overlapped the other flowers. Adhere the circle arrangement to the card front using Stampin' Dimensionals and place the top portion of the circle over the ribbon and center from left to right.
7. Adhere the completed panel to the card front using liquid glue.
8. On the inside panel stamp the sentiment "Thanks for blessing my life" in Early Espresso ink. Stamp a large flower onto the lower left of the inside panel using Daffodil Delight ink. Stamp a two-bud image just above the large flower and stamp in Daffodil Delight ink. Use a Lemon Lime Twist Stampin' Blend to color in the stem and the top of the buds. Use a Blender Pen and Pumpkin Pie ink to shade the buds and the petals of the flowers. Adhere the panel to an Early Espresso mat then adhere to the inside of the card.

Bold Bouquet Friendship Card

Project Sheet - Jun 7 2023

Carol Buckalew

inkybeestampers@gmail.com

<https://www.inkybeestampers.com>



9. Stamp the same large flower image and flower buds onto the lower left of the envelope front in Daffodil Delight ink and shade these images with Pumpkin Pie ink using a Blender Pen.
10. Adhere the piece of coordinating DSP to the envelope flap and trim the excess paper away from the flap.
11. Use the dark shade of a Lemon Lime Twist Stampin' Blend to color over three small Rhinestone Basic Jewels. Adhere the rhinestones to the Early Espresso circle on the card front to finish off the card.

Bold Bouquet Friendship Card

Project Sheet - Jun 7 2023

Carol Buckalew

inkybeestampers@gmail.com

<https://www.inkybeestampers.com>



The card is complete! I love using a Blender Pen to step up stamped images...you can get some very dramatic results! I hope you'll give it a try!

Products used to create this card are included on the next page.

Bold Bouquet Friendship Card

Project Sheet - Jun 7 2023

Carol Buckalew

inkybeestampers@gmail.com

<https://www.inkybeestampers.com>



**Bold Bouquet
Bundle - 161241**

Price: \$43.00

Add to Cart



**Delightfully
Eclectic 12" X 12"
(30.5 X 30.5 Cm)
Designer Series
Paper - 161640**

Sale: \$25.50

Price: \$30.00

Add to Cart



**2-3/8" (6 Cm)
Circle Punch -
161354**

Price: \$22.00

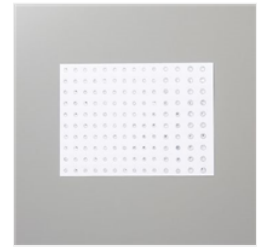
Add to Cart



**Ribbon Duo
Combo Pack -
161318**

Price: \$10.00

Add to Cart



**Rhinestone Basic
Jewels - 144220**

Price: \$6.00

Add to Cart



**Blender Pens -
102845**

Price: \$13.00

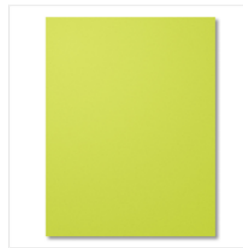
Add to Cart



**Very Vanilla 8-1/2"
X 11" Cardstock -
101650**

Price: \$10.50

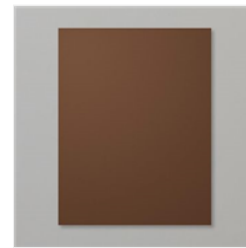
Add to Cart



**Lemon Lime Twist
8-1/2" X 11"
Cardstock -
144245**

Price: \$10.00

Add to Cart



**Early Espresso 8-
1/2" X 11"
Cardstock -
119686**

Price: \$10.00

Add to Cart



**Very Vanilla
Medium Envelopes
- 107300**

Price: \$8.50

Add to Cart



**Early Espresso
Classic Stampin'
Pad - 147114**

Price: \$9.00

Add to Cart



**Daffodil Delight
Classic Stampin'
Pad - 147094**

Price: \$9.00

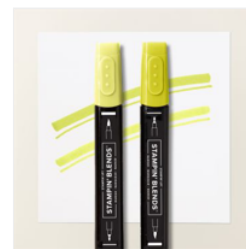
Add to Cart



**Pumpkin Pie
Classic Stampin'
Pad - 147086**

Price: \$9.00

Add to Cart



**Lemon Lime Twist
Stampin' Blends
Combo Pack -
161682**

Price: \$10.00

Add to Cart



**Multipurpose
Liquid Glue -
110755**

Price: \$5.50

Add to Cart

Bold Bouquet Friendship Card

Project Sheet - Jun 7 2023

Carol Buckalew

inkybeestampers@gmail.com

<https://www.inkybeestampers.com>



Stampin'
Dimensionals -
104430

Price: \$4.25

Add to Cart



Mini Glue Dots -
103683

Price: \$5.75

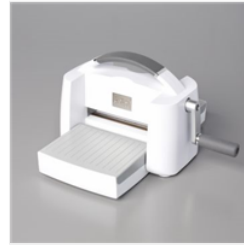
Add to Cart



Paper Trimmer -
152392

Price: \$26.00

Add to Cart



Stampin' Cut &
Emboss Machine -
149653

Price: \$128.00

Add to Cart