

Country Birdhouse Treat Box

Project Sheet - Apr 26 2024

Carol Buckalew

inkybeestampers@gmail.com

<https://www.inkybeestampers.com>



When I first saw the **Country Birdhouse Bundle**, I immediately thought about creating a birdhouse treat box using the birdhouse die. This project took a lot of figuring out on my part...but the end results, I hope, are instructions and photos that you can easily follow to create your own treat box! Let's get started!

Supplies:

- Country Birdhouse Bundle (Item #163401)
- Countryside Inn 12" x 12" Designer Series Paper
- Country Woods 12" x 12" Designer Series Paper (Item #163393)
- Stylish Shapes Dies
- Rainbow Adhesive-Backed Dots
- Petal Pink & White Diagonal Trim Combo Pack (Item #163417)
- Cardstock: Basic White, Boho Blue, Balmy Blue, Night of Navy
- Ink: Balmy Blue

1. Card Cuts:

- Treat Box - Cut 1 Boho Blue cardstock to 6-1/2" x 5"
On the 6-1/2" side, score at 1-1/2", 3", 4-1/2", and 6"
Turn the cardstock one turn counter clockwise
On the 5" side, score at 1-1/2", 3", and 4-1/2"
- Birdhouse Front & Back Panels:

Country Birdhouse Treat Box

Project Sheet - Apr 26 2024

Carol Buckalew

inkybeestampers@gmail.com

<https://www.inkybeestampers.com>

Use the Birdhouse die from the Country Birdhouse Dies and cut 2 Boho Blue cardstock to approximately 4" x 3-1/4"

Use the Birdhouse die from the Country Birdhouse Dies and cut 2 bird print from the Countryside Inn DSP to approximately 4" x 3-1/4"

- Birdhouse Base

Use the Country Birdhouse Dies to cut 2 Night of Navy woodgrain print from the Country Woods DSP to approximately 3" x 7/8"

- Birdhouse Roof

Use the Country Birdhouse Dies to cut 2 Night of Navy woodgrain print from the Country Woods DSP to approximately 3-1/4" x 2"

- Birdhouse Trim & Scalloped Trim Pieces

Use the Country Birdhouse Dies to cut the scalloped trim - Cut 2 Basic White cardstock to approximately 3-1/4" x 2"

Use the Country Birdhouse Dies to cut the plain trim - Cut 2 Balmy Blue cardstock to approximately 3-1/4" x 2"

- Birdhouse Opening - Use the smallest circle die from the Stylish Shapes Dies to cut out 2 circles in Night of Navy.

- Birdhouse Perch - Use the small circle die from the Country Birdhouse Dies and cut 2 circles from Night of Navy.

- Sentiment Label - Cut 1 Basic White cardstock to approximately 2-1/4" x 1"

- Die Cut Flowers - Scraps of Basic White and Balmy Blue cardstock

2. Assemble the two birdhouses. Adhere each of the birdhouse DSP pieces to each of the Boho Blue birdhouses. One of the birdhouses will act as the front of the treat box and one will act as the back of the treat box.

- Next, adhere the wood grain bases to each of the birdhouses.

- Adhere the roof to each birdhouse.

- Adhere the plain Balmy Blue trim piece to the white scalloped trim pieces, then adhere these beneath the roof pieces on the birdhouses.

- Adhere the Night of Navy birdhouse opening to the front of each birdhouse.

- Adhere the small circle perch beneath the openings on the front of each birdhouse.

3. Cut out the treat box that will fit between the two birdhouses. When complete, this box measures 1-1/2" wide x 1-1/2" tall x 1-1/2" deep.

- Cut and score the 6-1/2" x 5" piece of Boho Blue cardstock as indicated above.

- Follow the first diagram below for where to make cuts.

- The second diagram shows what the treat box should look like before assembling.

Country Birdhouse Treat Box

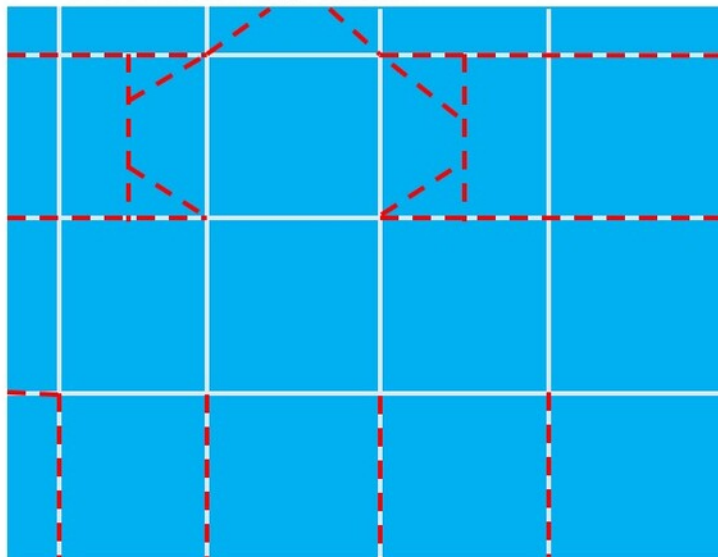
Project Sheet - Apr 26 2024

Carol Buckalew

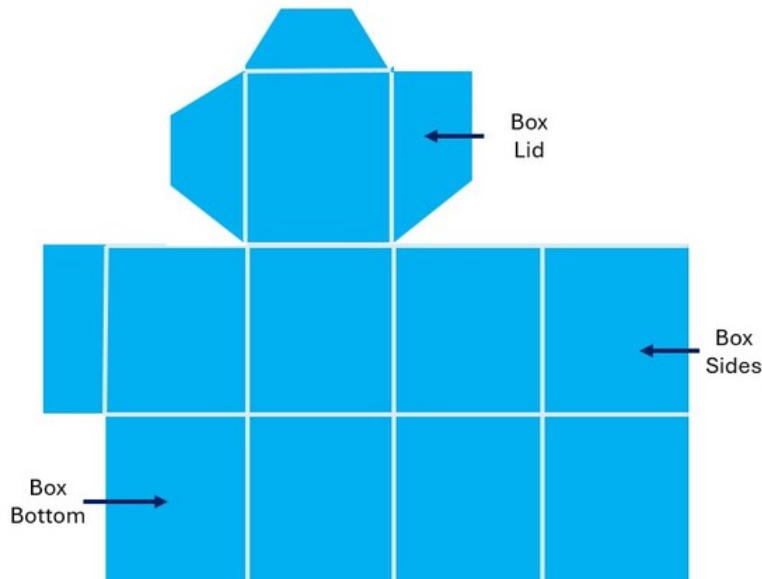
inkybeestampers@gmail.com

<https://www.inkybeestampers.com>

- Cut cardstock to 6-1/2" x 5".
- On 6-1/2" side, score at 1-1/2", 3", 4-1/2", and 6"
- Turn cardstock one turn counter-clockwise
- On 5" side score at 1-1/2", 3" and 4-1/2"



After cutting along the dotted red lines, this is what the box will look like.



4. Assemble the treat box

- Burnish all of the scorelines using a bone folder
- Use Tear & Tape to adhere the small tab to form the cube shape of the treat box.
- Fold in the bottom pieces of the treat box and use Tear & Tape to secure the bottom of the box.
- Cut a small pull tab to adhere to the box lid measuring 1" x 1/2". Score this small tab at

Country Birdhouse Treat Box

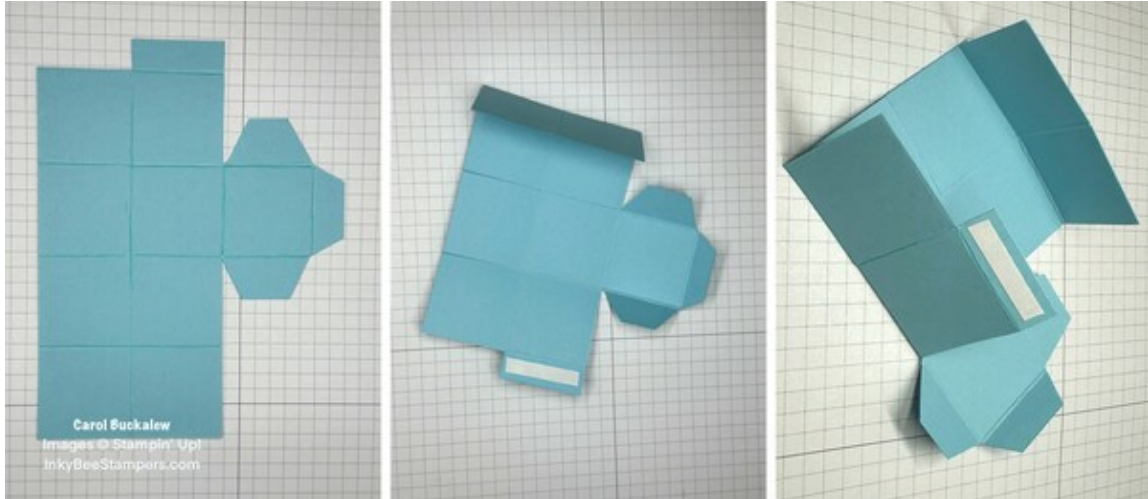
Project Sheet - Apr 26 2024

Carol Buckalew

inkybeestampers@gmail.com

<https://www.inkybeestampers.com>

1/2". Adhere half of this tab to the lid tab in the center. This tab will help to open the treat box once it is sandwiched between the two birdhouses.



5. Stamp the sentiment "Hello friend" in Balmy Blue ink onto the sentiment label. Adhere the sentiment label to the front of one of the birdhouses using Stampin' Dimensionals. Position the label at the bottom of the birdhouse.
6. Use the Country Birdhouse Dies to cut 2 large flowers and 1 small flower from Boho Blue cardstock. Use the same dies to cut 2 large flowers and 1 small flower from Basic White cardstock. Adhere the white flowers to the tops of each of the three Boho Blue Flowers. Adhere the flowers around the sentiment label on the front of the birdhouse.

Country Birdhouse Treat Box

Project Sheet - Apr 26 2024

Carol Buckalew

inkybeestampers@gmail.com

<https://www.inkybeestampers.com>



7. Tie a small bow from White Diagonal Trim and adhere the bow to the top of the birdhouse using a Mini Glue Dot.
8. Add a blue Rainbow Adhesive-Backed Dot to the centers of each of the flowers. I used the Azure Afternoon color since the birdhouse is in all blues!

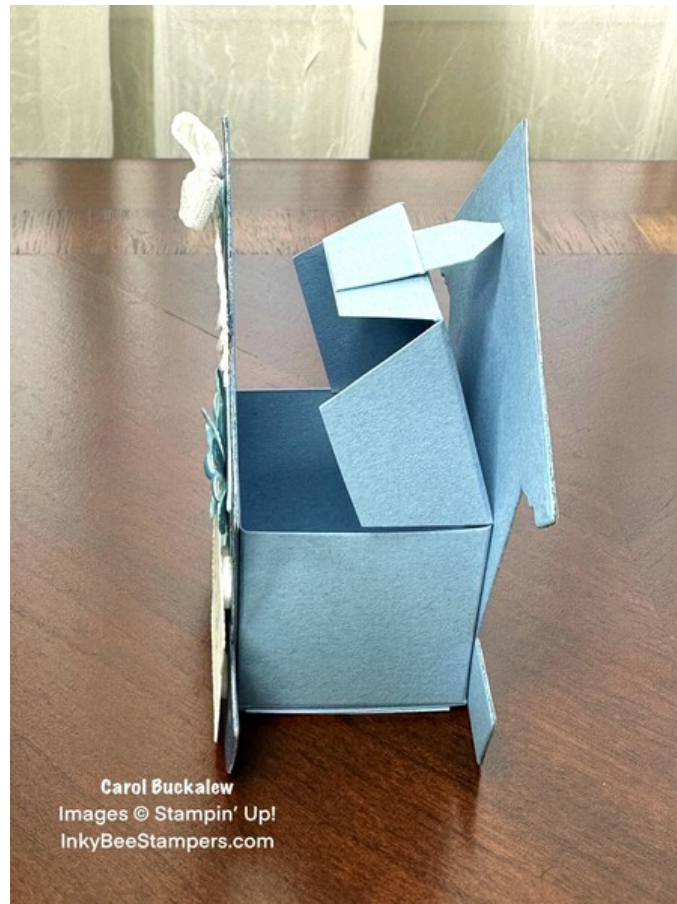
Country Birdhouse Treat Box

Project Sheet - Apr 26 2024

Carol Buckalew

inkybeestampers@gmail.com

<https://www.inkybeestampers.com>



This completes the project! This was a fun project to work on. The box size is perfect to hold M&M's or other small treats that you can gift to a friend to brighten their day! Products that are available now for purchase are included on the next page. Item numbers for products that will be available on May 1 are included under the supply list at the top of this document.

Country Birdhouse Treat Box

Project Sheet - Apr 26 2024

Carol Buckalew

inkybeestampers@gmail.com

<https://www.inkybeestampers.com>



Countryside Inn
12" X 12" (30.5 X
30.5 Cm) Designer
Series Paper -
161467

Price: \$12.50

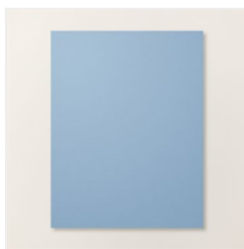
Add to Cart



Rainbow
Adhesive-Backed
Dots - 162758

Price: \$9.00

Add to Cart



Boho Blue 8-1/2" X
11" Cardstock -
161724

Price: \$10.00

Add to Cart



Balmy Blue 8-1/2"
X 11" Cardstock -
146982

Price: \$10.00

Add to Cart



Night Of Navy 8-
1/2" X 11"
Cardstock -
100867

Price: \$10.00

Add to Cart



Basic White 8-1/2"
X 11" Cardstock -
159276

Price: \$10.50

Add to Cart



Balmy Blue Classic
Stampin' Pad -
147105

Price: \$9.00

Add to Cart



Tear & Tape
Adhesive - 154031

Price: \$7.00

Add to Cart



Simply Scored
Scoring Tool -
122334

Price: \$36.00

Add to Cart