

Cottage Wreaths Book Fold Thanksgiving Card for World Card Making Day

Project Sheet - Oct 1 2022

Carol Buckalew
inkybeestampers@gmail.com
<https://www.inkybeestampers.com>

Carol Buckalew
Images © Stampin' Up!
InkyBeeStampers.com



The Cottage Wreath Bundle (Cottage Wreath Stamp Set and Country Wreaths Dies) along with the Gingham Cottage 12" x 12" Designer Series Paper provide so many options. You have the option of stamping wreath components directly to paper, or die cut components, or do both! Decorate your wreath any way you like! Today's card is decorated in Fall colors for Thanksgiving. I used an additional sentiment from the Friends Are Like Seashells Stamp Set and the Stylish Sahpes Dies for this card. Let's get started!

Cottage Wreaths Book Fold Thanksgiving Card for World Card Making Day

Project Sheet - Oct 1 2022

Carol Buckalew

inkybeestampers@gmail.com

<https://www.inkybeestampers.com>

Cottage Wreaths Book Fold Thanksgiving Card

Supplies (These are the basics. A full supply list is included at the end of this document.):

- Cottage Wreaths Stamp Set
- Country Wreaths Dies
- Gingham Cottage 12" x 12" Designer Series Paper In So Saffron Print
- Brushed Metallic Cardstock (in copper)
- Friends Are Like Seashells Stamp Set
- Stylish Shapes Dies
- Cardstock in Pumpkin Pie, Basic White and Real Red
- Cardstock Scraps in Fall Tones in Real Red, Pumpkin Pie, Crumb Cake, Crushed Curry, Evening Evergreen and Soft Succulent
- Inks in Evening Evergreen, Early Espresso, Crushed Curry, Pumpkin Pie and Cherry Cobbler
- Brushed Metallic Adhesive-Backed Dots (in copper)
- Faux Suede Trim in Early Espresso

Card Cuts:

- Card Base - Cut 1 Pumpkin Pie cardstock to 11" x 4-1/4". On the long side score at 4-1/4" and 5-1/2"
- Gingham Cottage 12" x 12" Designer Series Paper - So Saffron Print
 - Cut 1 to 4" x 7/8"
 - Cut 1 to 4" x 4"
 - Cut 1 to 6" x 2-1/2" (for envelope flap)
- Mats in Real Red cardstock
 - Cut 1 to 4-1/8" x 1"
 - Cut 2 to 4-1/8" x 4-1/8" (1 for the outside of the card and 1 for the inside of the card)
- Inside Panel - Cut 1 Basic White cardstock to 4" x 4"
- Center Square for Die Cutting - Cut 1 Basic White cardstock to 3" x 3"
- Square Mat - Cut 1 Brushed Metallic Cardstock in Copper to 3" x 3"
- Sentiment Label - Cut 1 Basic White cardstock to 2" x 1/2"

Assembling the Card:

1. Cut the Pumpkin Pie card base and score where indicated. Use a bone folder to burnish the two scorelines. Fold the card in half and burnish at the 5-1/2" score line with your bone folder. The 4-1/4" score line is on the front side of the card. With the 4-1/4" score line on the left, fold the card front back and burnish with your bone folder. Then, fully open the card

Cottage Wreaths Book Fold Thanksgiving Card for World Card Making Day

Project Sheet - Oct 1 2022

Carol Buckalew

inkybeestampers@gmail.com

<https://www.inkybeestampers.com>

base and apply liquid glue to the 1" section between the 4-1/4" score line and the 5-1/2" score line. Close the card to glue this 1" section of the card together. This forms the book binding portion of the card. Set aside the card base for now.

2. Adhere the 4" x 7/8" piece of DSP to its 4-1/8" x 1" Real Red mat. Adhere the 4" x 4" piece of DSP to its 4-1/8" x 4-1/8" Real Red mat. Adhere these units to the card front.
3. From the 3" x 3" Basic White cardstock square, use the largest square die from the Stylish Shapes Dies set to die cut the square. Adhere this square to the 3" x 3" piece of copper Brushed Metallic Cardstock. Then, adhere this square unit to the front of your card using Stampin' Dimensionals, making sure to center the square on the "open" flap of the card front.
4. Using the 3-leaf stamp from the Cottage Wreaths Stamp Set, stamp the following onto scraps of cardstock:
 - Stamp in Crushed Curry ink onto Crushed Curry cardstock 2 times
 - Stamp in Pumpkin Pie ink onto Pumpkin Pie cardstock 2 times
 - Stamp in Cherry Cobbler ink onto Real Red cardstock 2 times
5. Using the acorn stamp from the Cottage Wreaths Stamp Set, stamp the acorn 1 time in Early Espresso ink onto Crumb Cake cardstock.
6. Stamp the sentiment "Grateful" onto the 2" x 1/2" Basic White sentiment label in Evening Evergreen ink, making sure to center the greeting on the sentiment label. Using a small pair of scissors or snips, cut banners on each side of the sentiment label.
7. On the Basic White inside panel, stamp the sentiment "For you" from the Friends Are Like Seashells Stamp Set in Evening Evergreen ink. Stamp the greenery sprig from the Cottage Wreaths Stamp Set in Evening Evergreen ink in the upper left and lower right corners of the panel. Adhere this panel to its Real Red mat, then adhere this unit to the inside of the card.
8. Using a Stampin' Cut & Emboss machine and the Country Wreaths Dies set, die cut the following (refer to photo below):
 - Die cut 1 wreath in Evening Evergreen using the wreath detailed die from the Country Wreaths Dies set
 - Die cut the leaves that you previously stamped (Note that there are 2 dies included in the set to cut leaves)
 - Die cut the acorn that you previously stamped
 - Die cut 4 of the greenery sprigs in Soft Succulent cardstock (Note that there are 4 of this die included in the set so you can die cut all of the leaves at once)

Cottage Wreaths Book Fold Thanksgiving Card for World Card Making Day

Project Sheet - Oct 1 2022

Carol Buckalew

inkybeestampers@gmail.com

<https://www.inkybeestampers.com>



9. Begin assembling the wreath. I used liquid glue to adhere the leaves to the wreath and I only applied a small drop of glue to the bottom tips of each leaf. With my leaves facing right, I worked around the wreath counter-clockwise. Pick a starting point and glue the end of the first leaf to the center of the die cut wreath, angling the leaf outwards. Adhere the next leaf to the left of the first leaf and angle this leaf inwards. **Important: Be sure to cover the stem of the previously adhered leaf as you work around the wreath.** I alternated a Pumpkin Pie leaf, then a Real Red leaf, then a Crushed Curry leaf, then a Soft Succulent greenery sprig and repeated this pattern around the wreath. You should have left over leaves should you need them.
10. Tie a bow using a length of Faux Suede Trim and use a Mini Glue Dot to adhere the bow to the top of the wreath. Use a Mini Glue Dot to tuck in the acorn just under the bow. Adhere the wreath to the white square unit using Stampin' Dimensionals. When applying the Stampin' Dimensionals, be sure to place them on the back of the wreath where they won't show on the front. You will need to trim your Dimensionals down in order for them to fit.
11. Place 1 Stampin' Dimensional on the back side of the sentiment label and 1 drop of glue on the right and left, then adhere the sentiment label across the bottom portion of the wreath.
12. Place three copper Brushed Metallic Adhesive-Backed Dots around the wreath.
13. With another length of Faux Suede Trim, wrap the trim around the book binded portion of the card and tie a knot.
14. On the lower right corner of the envelope front, stamp the greenery sprig from the Cottage Wreaths Stamp Set in Evening Evergreen ink once.
15. Adhere the coordinating piece of 6" x 2-1/5" DSP to the envelope flap, then fussy cut around the flap to finish off the envelope.

Cottage Wreaths Book Fold Thanksgiving Card for World Card Making Day

Project Sheet - Oct 1 2022

Carol Buckalew

inkybeestampers@gmail.com

<https://www.inkybeestampers.com>



Doesn't this make the perfect Fall wreath? Fall is my favorite time of year...I love all of the rich, warm colors of Fall! I hope you enjoy making this card as much as I enjoyed creating it for you! Have fun and stay crafty!

Carol Buckalew, Inky Bee Stampers, Independent Stampin' Up! Demonstrator

Products used to create this card are included on the next page.

Cottage Wreaths Book Fold Thanksgiving Card for World Card Making Day

Project Sheet - Oct 1 2022

Carol Buckalew

inkybeestampers@gmail.com

<https://www.inkybeestampers.com>



Cottage Wreaths
Bundle (English) -
159659

Price: \$52.00

Add to Cart



Friends Are Like
Seashells
Photopolymer
Stamp Set
(English) - 158203

Price: \$26.00

Add to Cart



Gingham Cottage
12" X 12" (30,5 X
30,5 Cm) Designer
Series Paper -
159651

Price: \$30.00

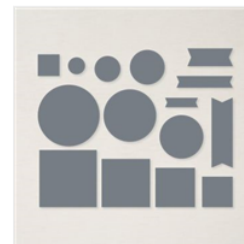
Add to Cart



Brushed Metallic
Cardstock -
153524

Price: \$15.00

Add to Cart



Stylish Shapes
Dies - 159183

Price: \$30.00

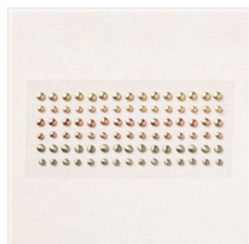
Add to Cart



Early Espresso
1/4" (6.4 Mm) Faux
Suede Trim -
152472

Price: \$6.50

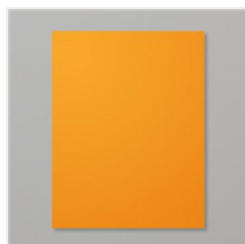
Add to Cart



Brushed Metallic
Adhesive Backed
Dots - 156506

Price: \$9.00

Add to Cart



Pumpkin Pie 8-1/2"
X 11" Cardstock -
105117

Price: \$9.25

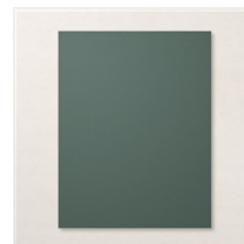
Add to Cart



Real Red 8-1/2" X
11" Cardstock -
102482

Price: \$9.25

Add to Cart



Evening Evergreen
8-1/2" X 11"
Cardstock -
155574

Price: \$9.25

Add to Cart

Cottage Wreaths Book Fold Thanksgiving Card for World Card Making Day

Project Sheet - Oct 1 2022

Carol Buckalew

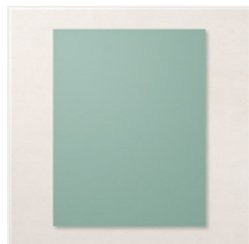
inkybeestampers@gmail.com
<https://www.inkybeestampers.com>



Crushed Curry 8-
1/2" X 11"
Cardstock -
131199

Price: \$9.25

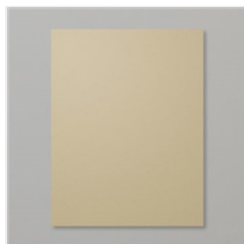
Add to Cart



Soft Succulent 8-
1/2" X 11"
Cardstock -
155776

Price: \$9.25

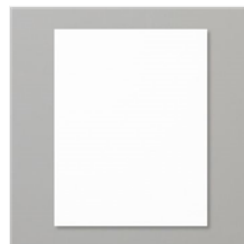
Add to Cart



Crumb Cake 8-1/2"
X 11" Cardstock -
120953

Price: \$9.25

Add to Cart



Basic White 8-1/2"
X 11" Cardstock -
159276

Price: \$10.25

Add to Cart



Basic White
Medium Envelopes
- 159236

Price: \$7.50

Add to Cart



Pumpkin Pie
Classic Stampin'
Pad - 147086

Price: \$8.00

Add to Cart



Crushed Curry
Classic Stampin'
Pad - 147087

Price: \$8.00

Add to Cart



Cherry Cobbler
Classic Stampin'
Pad - 147083

Price: \$8.00

Add to Cart



Evening Evergreen
Classic Stampin'
Pad - 155576

Price: \$8.00

Add to Cart



Early Espresso
Classic Stampin'
Pad - 147114

Price: \$8.00

Add to Cart



Paper Snips
Scissors - 103579

Price: \$11.00

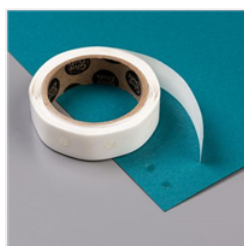
Add to Cart



Multipurpose
Liquid Glue -
110755

Price: \$4.00

Add to Cart



Mini Glue Dots -
103683

Price: \$5.25

Add to Cart



Stampin'
Dimensionals -
104430

Price: \$4.25

Add to Cart



Paper Trimmer -
152392

Price: \$25.00

Add to Cart

Cottage Wreaths Book Fold Thanksgiving Card for World Card Making Day

Project Sheet - Oct 1 2022

Carol Buckalew

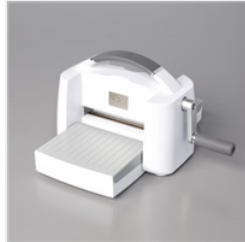
inkybeestampers@gmail.com
<https://www.inkybeestampers.com>



Bone Folder -
102300

Price: \$7.00

Add to Cart



Stampin' Cut &
Emboss Machine -
149653

Price: \$125.00

Add to Cart