

# Calm & Quiet Monotone Thinking of You Card

Project Sheet - Jul 28 2023

Carol Buckalew

[inkybeestampers@gmail.com](mailto:inkybeestampers@gmail.com)

<https://www.inkybeestampers.com>



I created this card using the **Calm & Quiet Stamp Set** (a Host Exclusive Stamp Set) and paper from **Countryside Inn 12" x 12" Designer Series Paper**. This pretty pond scene from the **Calm & Quiet Stamp Set** reminds me of Delft Pottery from the Netherlands and Boho Blue ink was the perfect color choice! Let's get started!

## Supplies:

- Calm & Quiet Stamp Set
- Wonderful Thoughts Bundle
- Countryside Corners Dies
- Countryside Inn 12" x 12" Designer Series Paper
- Textured Ribbon
- Blender Pens
- Paper: Thick Basic White, Basic White, Boho Blue
- Ink: Boho Blue
- Adhesives: Multipurpose Liquid Glue, Stampin' Dimensionals
- Paper Trimmer

# Calm & Quiet Monotone Thinking of You Card

Project Sheet - Jul 28 2023

Carol Buckalew

[inkybeestampers@gmail.com](mailto:inkybeestampers@gmail.com)  
<https://www.inkybeestampers.com>

- Stampin' Cut & Emboss Machine

## 1. Card Cuts:

- Card Base - Cut 1 Thick Basic White cardstock to 8-1/2" x 5-1/2", score at 4-1/4"
- Outside & Inside Mats - Cut 2 Boho Blue cardstock to 5-3/8" x 4-1/8"
- DSP Panel - Cut 1 floral print with white background from the Countryside Inn Designer Series Paper to 5-1/4" x 4"
- Octagon #1 - Cut 1 Boho Blue cardstock to approximately 4-3/4" x 3-1/4"
- Octagon #2 - Cut 1 Basic White cardstock to approximately 4-1/4" x 2-1/2"
- Sentiment Label - Cut 1 Thick Basic White cardstock to approximately 2-1/2" x 7/8"
- Inside Panel - Cut 1 Basic White cardstock to 5-1/4" x 4"
- Scrap of Boho Blue cardstock for die cutting flower
- Envelope Flap - Cut 1 coordinating designer series paper to 6" x 2-1/2"

2. Adhere the DSP Panel to one of the Boho Blue mats, then adhere this to the card front.

## 3. Die Cuts:

- Using the Countryside Corners Dies, cut 1 octagon from Boho Blue cardstock using the 2nd to largest die
- Using the Countryside Corners Dies, cut 1 sentiment label from Thick Basic White cardstock using the smallest octagon die
- Using the Wonderful Thoughts Dies, cut 1 flower from Boho Blue cardstock

4. Using the Calm & Quiet Stamp Set, stamp the pond scene in Boho Blue ink onto a piece of Basic White cardstock measuring at least 4-1/4" x 2-1/2". Use a Blender Pen dipped into Boho Blue ink to deepen the most shadowed areas on the stamped image. I darkened the pond bank underneath the overhanging trees, around the rocks on the pond bank, and the dock supports in shadow. **Helpful Hint: When using a Blender Pen, I open my ink pad and touch the tip of the Blender Pen onto the edge of the ink pad to pick up ink. I first touch the inked Blender Pen to a scrap piece of paper to determine how dark the ink will be. You may need to scribble out some of the ink onto a scrap piece of paper to adjust the depth of color on the Blender Pen before adding to your stamped image.** Use the 3rd to largest octagon die from the Countryside Corners Dies to cut out. Make sure that the long edge of the die is parallel with the pond bank before cutting.

5. Adhere the stamped octagon from Step #4 above to a Boho Blue octagon. The Boho Blue octagon will be cut using the 2nd to largest die from the Countryside Corners Dies. Adhere this unit to the card front using Stampin' Dimensionals and position the unit towards the top of the card front leaving about a 1/4" of the DSP showing above the octagons and center left to right.

6. Using the Wonderful Thoughts Stamp Set, stamp the sentiment "thinking of you" in Boho Blue ink onto the sentiment label. Adhere Stampin' Dimensionals along the bottom edge of the sentiment label and adhere the label to the bottom of the card front so that the top edge of the label is slightly overlapping the bottom of the octagons. Refer to photos for reference.

# Calm & Quiet Monotone Thinking of You Card

Project Sheet - Jul 28 2023

Carol Buckalew

[inkybeestampers@gmail.com](mailto:inkybeestampers@gmail.com)  
<https://www.inkybeestampers.com>



7. Cut 1 flower from Boho Blue cardstock using the flower die from the Wonderful Thoughts Dies. Trim the bottom portion of the flower off and tuck the top part of the flower under the upper right corner of the sentiment label and adhere with liquid glue.
8. Tie a knot from a short length of Boho Blue Textured Ribbon. Adhere the bow onto the upper right corner of the sentiment label using liquid glue. You will need to hold the bow in place until the glue sets.
9. Use the small grass and bird stamp from the Calm & Quiet Stamp Set and partially stamp just the grass image onto the lower right corner of the inside panel in Boho Blue ink. From the Wonderful Thoughts Stamp Set, stamp the sentiment "you are much appreciated" in Boho Blue ink onto the inside panel. Adhere the inside panel to the remaining Boho Blue mat, then adhere this to the inside of the card.

# Calm & Quiet Monotone Thinking of You Card

Project Sheet - Jul 28 2023

Carol Buckalew

[inkybeestampers@gmail.com](mailto:inkybeestampers@gmail.com)

<https://www.inkybeestampers.com>



10. Stamp the same grass image onto the lower right corner of the envelope front in Boho Blue ink.
11. Adhere the coordinating piece of designer series paper to the envelope flap and trim the excess paper away from the flap.

# Calm & Quiet Monotone Thinking of You Card

Project Sheet - Jul 28 2023

Carol Buckalew

[inkybeestampers@gmail.com](mailto:inkybeestampers@gmail.com)

<https://www.inkybeestampers.com>



This completes the card! This monochrome theme makes for a pretty card!

Products used to create this card are included on the next page.



# Calm & Quiet Monotone Thinking of You Card

Project Sheet - Jul 28 2023

Carol Buckalew

[inkybeestampers@gmail.com](mailto:inkybeestampers@gmail.com)  
<https://www.inkybeestampers.com>



Calm & Quiet Host  
Cling Stamp Set -  
161611

Price: \$14.00

Add to Cart



Wonderful  
Thoughts Bundle  
(English) - 161494

Price: \$53.00

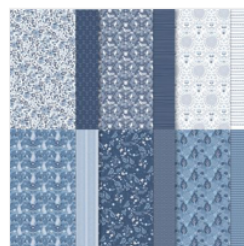
Add to Cart



Countryside  
Corners Dies -  
161471

Price: \$28.00

Add to Cart



Countryside Inn  
12" X 12" (30.5 X  
30.5 Cm) Designer  
Series Paper -  
161467

Price: \$12.50

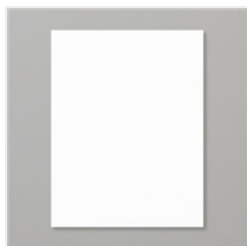
Add to Cart



Boho Blue 3/8" (1  
Cm) Textured  
Ribbon - 161631

Price: \$8.00

Add to Cart



Basic White 8-1/2"  
X 11" Thick  
Cardstock -  
159229

Price: \$9.00

Add to Cart



Basic White 8-1/2"  
X 11" Cardstock -  
159276

Price: \$10.50

Add to Cart



Boho Blue 8-1/2" X  
11" Cardstock -  
161724

Price: \$10.00

Add to Cart



Basic White  
Medium Envelopes  
- 159236

Price: \$8.50

Add to Cart



Boho Blue Classic  
Stampin' Pad -  
161650

Price: \$9.00

Add to Cart



Blender Pens -  
102845

Price: \$13.00

Add to Cart



Multipurpose  
Liquid Glue -  
110755

Price: \$5.50

Add to Cart



Stampin'  
Dimensionals -  
104430

Price: \$4.25

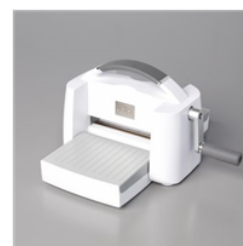
Add to Cart



Paper Trimmer -  
152392

Price: \$26.00

Add to Cart



Stampin' Cut &  
Emboss Machine -  
149653

Price: \$128.00

Add to Cart