

Stars at Night Easel Christmas Card

Project Sheet - Oct 18 2023

Carol Buckalew

inkybeestampers@gmail.com

<https://www.inkybeestampers.com>



This easy easel card features the **Stars at Night Bundle** and the **O Holy Night 12" x 12" Designer Series Paper** along with gold embossed accents. This makes a great display card to send to that someone special!

Supplies:

- Stars at Night Bundle (includes Stars at Night Hybrid Embossing Folder)
- O Holy Night 12" x 12" Designer Series Paper
- Gold Foil Sheets
- Silver & Gold 12" x 12" Adhesive-Backed Glimmer Paper
- Simply Elegant Trim
- Adhesive-Backed Star Trinkets
- Gold Embossing Powder
- Heat Tool
- Cardstock: Night of Navy, Boho Blue, Basic White
- Ink: VersaMark
- Adhesives: Multipurpose Liquid Glue, Stampin' Dimensionals, Stampin' Seal

Stars at Night Easel Christmas Card

Project Sheet - Oct 18 2023

Carol Buckalew

inkybeestampers@gmail.com

<https://www.inkybeestampers.com>

- Paper Trimmer
- Stampin' Cut & Emboss Machine

1. Card Cuts:

- Card Base - Cut 1 Night of Navy cardstock to 8-1/2" x 5-1/2", score at 4-1/4" and 2-1/8"
- Outside & Inside Mats - Cut 2 Boho Blue cardstock to 5-1/4" x 4"
- Outside & Inside Designer Series Paper Panels - Cut 2 to 5" x 3-3/4"
- Large Gold Stars - Cut 1 Gold Foil Sheet to approximately 4-3/4" x 4" (you will need a piece of Gold Foil large enough to cover the three stars which can be die cut and embossed at the same time using the Stars at Night Hybrid Embossing Folder)
- Scraps of Gold 12" x 12" Adhesive-Backed Glimmer Paper for die cutting small stars
- Inside Panel - Cut 1 Basic White cardstock to 4-3/4" x 2-1/4"
- Sentiment Label - Cut 1 Basic White cardstock to approximately 3-1/8" x 1-3/8"
- Envelope Flap - Cut 1 coordinating piece of designer series paper to 6" x 2-1/4"

2. On one of the designer series paper panels measuring 5" x 3-3/4", use VersaMark ink to stamp the sentiment "Celebrating the magic of the season" onto the lower left of the panel. Sprinkle gold embossing powder over the stamped area and use a Heat Tool to set the embossing powder. Adhere this panel to one of the Boho Blue mats, then adhere the panel to the lower section of the card front between the 2-1/8" score line and the bottom edge of the card front. **Important Note: This is the area from the bottom of the front card edge to the first 2-1/8" score line. Only apply glue to this section.**

3. Adhere the remaining designer series paper panel to the remaining Boho Blue mat, then adhere this unit to the inside of the card base.

4. Using the Stars at Night Dies and the Stars at Night Hybrid Embossing Folder, dry emboss and die cut the three stars from Gold Foil Sheets. **Note: The 3-star die from the Stars at Night Dies fits firmly into the embossing folder. Carefully fit the 3-star die inside of the embossing folder then place the gold foil over the die so that the gold foil completely covers the three stars, then run the embossing folder through the Stampin' Cut & Emboss Machine to both die cut and emboss the stars at the same time.**

Stars at Night Easel Christmas Card

Project Sheet - Oct 18 2023

Carol Buckalew

inkybeestampers@gmail.com

<https://www.inkybeestampers.com>



5. Using the Stars at Night Dies, die cut three small stars from Gold Adhesive-Backed Glimmer Paper. Adhere one of these small stars to the centers of the previously die cut Gold Foil stars.
6. Arrange the stars onto the card front to determine placement (refer to photos). Adhere the smaller of the gold stars onto the lower left of the card front and the long, skinny star towards the upper right of the card front and adhere down with liquid glue. The largest star will be adhered towards the top center of the card front, but first, use a small amount of Stampin' Seal to adhere down several loops of Gold Simply Elegant Trim. Adhere the large gold star over the trim loops using Stampin' Dimensionals.
7. On the inside panel measuring 4-3/4" x 2-1/4", stamp the multi-star image in VersaMark ink onto the upper left of the panel and sprinkle gold embossing powder over the stamped image. Use a heat tool to set the embossing powder. Adhere the panel to the inside of the card and position towards the top. ***Repeat stamping and embossing this same image onto the lower corner of the envelope front***

Stars at Night Easel Christmas Card

Project Sheet - Oct 18 2023

Carol Buckalew

inkybeestampers@gmail.com

<https://www.inkybeestampers.com>



8. Onto a scrap of Basic White cardstock, stamp the sentiment "Wishing you the best & brightest holiday season" in VersaMark ink. Sprinkle gold embossing powder over the stamped sentiment then use a Heat Tool to set the embossing powder. Use the sentiment label die from the Stars at Night Dies set to cut out. Adhere the sentiment on the inside of the card along the bottom edge of the designer series paper panel using Stampin' Dimensionals. This sentiment label becomes the stop to hold up the easel portion of the card.
9. Adhere the coordinating piece of designer series paper to the envelope flap and use paper snips to trim the excess paper away from the flap.
10. Adhere three small Adhesive-Backed Star Trinkets to the card front.

Stars at Night Easel Christmas Card

Project Sheet - Oct 18 2023

Carol Buckalew

inkybeestampers@gmail.com

<https://www.inkybeestampers.com>



This completes the card! I love an easel card and this one turned out extra special with all of the gold embossing! I hope you'll give it a try.

Products used to create this card are included on the next page.

Stars at Night Easel Christmas Card

Project Sheet - Oct 18 2023

Carol Buckalew

inkybeestampers@gmail.com

<https://www.inkybeestampers.com>



Stars At Night
Bundle (English) -
162007

Price: \$56.50

Add to Cart



O Holy Night 12" X
12" (30.5 X 30.5
Cm) Designer
Series Paper -
161986

Price: \$12.50

Add to Cart



Gold Foil Sheets -
132622

Price: \$5.00

Add to Cart



Silver & Gold 12" X
12" (30.5 X 30.5
Cm) Adhesive-
Backed Glimmer
Paper - 162288

Price: \$7.00

Add to Cart



Simply Elegant
Trim - 155766

Price: \$7.50

Add to Cart



Adhesive-Backed
Star Trinkets -
162010

Price: \$8.00

Add to Cart



Metallics
Embossing
Powders - 155555

Price: \$18.00

Add to Cart



Heat Tool - 129053

Price: \$31.00

Add to Cart



Night Of Navy 8-
1/2" X 11"
Cardstock -
100867

Price: \$10.00

Add to Cart



Boho Blue 8-1/2" X
11" Cardstock -
161724

Price: \$10.00

Add to Cart



Basic White 8-1/2"
X 11" Cardstock -
159276

Price: \$10.50

Add to Cart



VersaMark Pad -
102283

Price: \$9.50

Add to Cart



Multipurpose
Liquid Glue -
110755

Price: \$5.50

Add to Cart



Stampin' Seal -
152813

Price: \$8.00

Add to Cart



Stampin'
Dimensionals -
104430

Price: \$4.25

Add to Cart

Stars at Night Easel Christmas Card

Project Sheet - Oct 18 2023

Carol Buckalew

inkybeestampers@gmail.com

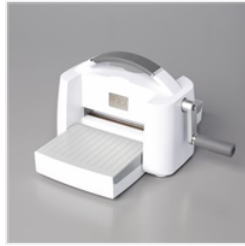
<https://www.inkybeestampers.com>



Paper Trimmer -
152392

Price: \$26.00

Add to Cart



Stampin' Cut &
Emboss Machine -
149653

Price: \$128.00

Add to Cart