

Cottage Wreaths Friendship Card

Project Sheet - Jun 26 2023

Carol Buckalew

inkybeestampers@gmail.com

<https://www.inkybeestampers.com>



I pulled out one of my favorite stamp sets for this card, the **Cottage Wreath Stamp Set**, and I used paper from the Earthen Elegance 12" x 12" Designer Series Paper pack in Pretty Peacock and Pecan Pie. The center panel uses a fun ink blending and water splatter technique. These are such rich colors!

Supplies:

- Cottage Wreath Stamp Set
- Earthen Elegance 12" x 12" Designer Series Paper
- Countryside Corners Dies
- Banners Pick A Punch
- Festive Pearls
- Blending Brush
- Gold Stampin' Emboss Powder
- Heat Tool
- Paper: Basic White, Pretty Peacock
- Ink: Pecan Pie, Pretty Peacock, VersaMark

Cottage Wreaths Friendship Card

Project Sheet - Jun 26 2023

Carol Buckalew

inkybeestampers@gmail.com

<https://www.inkybeestampers.com>

- Adhesives: Multipurpose Liquid Glue, Mini Glue Dots, Stampin' Dimensionals
- Paper Trimmer
- Stampin' Cut & Emboss Machine

1. Paper Cuts:

- Card Base - Cut 1 Pretty Peacock cardstock to 8-1/2" x 5-1/2", score at 4-1/4"
- DSP Panel - Cut 1 Pecan Pie print to 5-3/8" x 4-1/8"
- DSP Panel - Cut 1 Pretty Peacock print to approximately 5-1/4" x 3-3/4"
- Panel - Cut 1 Basic White cardstock to 4-3/4" x 3-1/4"
- Sentiment Label - Cut 1 Pretty Peacock cardstock to 3" x 3/4"
- Inside Panel - Cut 1 Shimmery White Paper to 5-3/8" x 4-1/8"
- Envelope Flap - Cut 1 coordinating DSP to 6" x 2-1/2"

2. Adhere the Pecan Pie panel measuring 5-3/8" x 4-1/8" to the front of the card base.

3. On the Basic White panel measuring 4-3/4" x 3-1/4":

- Use a blending brush and blend Pretty Peacock ink over the entire panel. It's okay if the ink is not blended smoothly.
- Have a dry paper towel handy. Dip a small paint brush in water and flick water droplets over the panel. Let the water droplets sit for just a minute, then use the dry paper towel to blot the panel dry.
- Use the 2nd to largest die from the Countryside Corners Dies to die cut the panel.
- From the Cottage Wreath Stamp Set, stamp the stick wreath in Pecan Pie ink onto the panel.
- Use the berry stamp and stamp repeatedly around the wreath using VersaMark ink. Sprinkle gold embossing powder over the stamped berries and heat set using a heat tool.

4. Using the largest die from the Countryside Corners Dies, cut out the Pretty Peacock print panel measuring 5-1/4" x 3-3/4". Adhere the panel from Step #3 above to the Pretty Peacock die cut panel. Use Stampin' Dimensionals to adhere this unit to the card front.

Cottage Wreaths Friendship Card

Project Sheet - Jun 26 2023

Carol Buckalew

inkybeestampers@gmail.com

<https://www.inkybeestampers.com>



5. Stamp the sentiment "Some people just make life better" in VersaMark ink onto the sentiment label. Sprinkle gold embossing powder over the sentiment then use a Heat Tool to set the embossing powder. Be careful not to overheat the embossing powder. Use the Banner Pick A Punch and punch a banner end on the left of the sentiment label. Use a combination of Stampin' Dimensionals and glue to adhere the sentiment label to the lower right of the card front. The sentiment label will overlap the octagon panels.
6. Tie a double bow using Linen Thread and adhere the bow to the top of the stamped and embossed wreath. Adhere multiple gold Festive Pearls around the wreath.
7. On the inside panel, use a blending brush to blend Pretty Peacock ink onto the lower corner of the panel. Flick water droplets onto the ink blended area and use a dry paper towel to blot up the water droplets. Adhere the panel to the inside of the card.

Cottage Wreaths Friendship Card

Project Sheet - Jun 26 2023

Carol Buckalew

inkybeestampers@gmail.com

<https://www.inkybeestampers.com>



8. On the envelope front, blend Pretty Peacock ink onto the lower left front of the envelope. Place a scrap piece of cardstock inside of the envelope. Flick water droplets over the ink blended area of the envelope and use a dry paper towel to blot up the water droplets.
9. Adhere the coordinating piece of Designer Series Paper to the envelope flap and trim the excess paper away from the flap.

Cottage Wreaths Friendship Card

Project Sheet - Jun 26 2023

Carol Buckalew

inkybeestampers@gmail.com

<https://www.inkybeestampers.com>



This card would be suitable for either male or female. While this isn't a Christmas card...it sure could be, just by changing up the sentiment on the card!

Products used to create this card are included on the next page.

Cottage Wreaths Friendship Card

Project Sheet - Jun 26 2023

Carol Buckalew

inkybeestampers@gmail.com

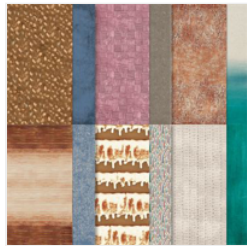
<https://www.inkybeestampers.com>



Cottage Wreaths
Photopolymer
Stamp Set
(English) - 159652

Price: \$19.00

Add to Cart

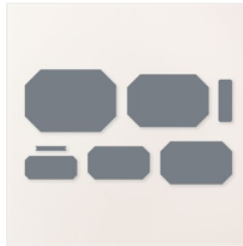


Earthen Elegance
12" X 12" (30.5 X
30.5 Cm) Designer
Series Paper -
161503

Sale: \$10.62

Price: \$12.50

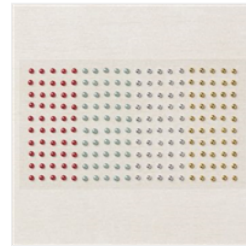
Add to Cart



Countryside
Corners Dies -
161471

Price: \$28.00

Add to Cart



Festive Pearls -
159963

Price: \$7.00

Add to Cart



Linen Thread -
104199

Price: \$5.00

Add to Cart



Blending Brushes -
153611

Price: \$13.00

Add to Cart



Metallics
Embossing
Powders - 155555

Price: \$18.00

Add to Cart



Heat Tool - 129053

Price: \$31.00

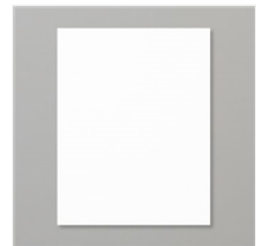
Add to Cart



Banners Pick A
Punch - 153608

Price: \$27.00

Add to Cart



Basic White 8-1/2"
X 11" Cardstock -
159276

Price: \$10.50

Add to Cart



Pretty Peacock 8-
1/2" X 11"
Cardstock -
150880

Price: \$10.00

Add to Cart



Pecan Pie Classic
Stampin' Pad -
161665

Price: \$9.00

Add to Cart



Pretty Peacock
Classic Stampin'
Pad - 150083

Price: \$9.00

Add to Cart



Versamark Pad -
102283

Price: \$9.50

Add to Cart



Multipurpose
Liquid Glue -
110755

Price: \$5.50

Add to Cart

Cottage Wreaths Friendship Card

Project Sheet - Jun 26 2023

Carol Buckalew

inkybeestampers@gmail.com

<https://www.inkybeestampers.com>



Mini Glue Dots -
103683

Price: \$5.75

Add to Cart



Stampin'
Dimensionals -
104430

Price: \$4.25

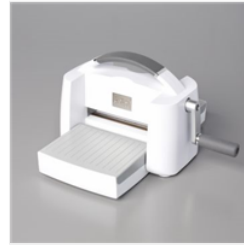
Add to Cart



Paper Trimmer -
152392

Price: \$26.00

Add to Cart



Stampin' Cut &
Emboss Machine -
149653

Price: \$128.00

Add to Cart