

# Cheerful Daisies Friendship Card

Project Sheet - Apr 17 2023

Carol Buckalew

[inkybeestampers@gmail.com](mailto:inkybeestampers@gmail.com)

<https://www.inkybeestampers.com>



I couldn't resist making another card using the ***Cheerful Daisies Bundle*** and the ***Fresh as a Daisy 12" x 12" Designer Series Paper***! So beautiful! These products will be available for customer orders on May 2.

## Supplies:

- Cheerful Daisies Bundle (161297)
- Deckled Rectangles Dies
- Fresh as a Daisy 12" x 12" Designer Series Paper (161289)
- Adhesive-Backed Solid Gems (#161300)
- Paper: Basic White, Lemon Lolly (161720), Pebbled Path (161722), Garden Green
- Ink: Lemon Lolly (161666), Crushed Curry
- Sponge Daubers
- Adhesives: Liquid Glue, Stampin' Dimensionals
- Paper Trimmer
- Stampin' Cut & Emboss Machine

# Cheerful Daisies Friendship Card

Project Sheet - Apr 17 2023

Carol Buckalew

[inkybeestampers@gmail.com](mailto:inkybeestampers@gmail.com)

<https://www.inkybeestampers.com>

## 1. Card Cuts:

- Card Base - Cut 1 Pebbled Path cardstock to 8-1/2" x 5-1/2", score at 4-1/4"
- DSP Panel - Cut 1 Daisy pattern with Garden Green background from the Fresh as a Daisy DSP pack to 4-1/4" x 3"
- DSP Frame - Cut 1 Copper Clay pattern from the Fresh as a Daisy DSP pack to 5-3/8" x 4-1/8"
- Scraps of Lemon Lolly, Basic White, Pebbled Path and Garden Green for die cutting flowers and foliage
- Sentiment Label - Cut 1 Lemon Lolly cardstock to 2-1/2" x 1-1/4"
- Inside Mat - Cut 1 Lemon Lolly cardstock to 5-3/8" x 4-1/8"
- Inside Panel - Cut 1 Basic White cardstock to 5-1/4" x 4"
- Envelope Flap - Cut 1 coordinating DSP to 6" x 2-1/2"

## 2. Using the Cheerful Daisies Dies, die cut the following and follow any additional directions:

- Die cut 1 large Daisy using the large daisy outline die from Lemon Lolly cardstock. Use a sponge dauber to blend Crushed Curry ink around the perimeter of the die cut.
- Die cut 2 half Daisies using the half daisy outline die from Lemon Lolly cardstock. Use a sponge dauber to blend Crushed Curry ink around the perimeter of the die cut.
- Die cut 1 large detail Daisy from white cardstock. Adhere this detail die cut to the center of the Lemon Lolly large Daisy die cut.
- Die cut 2 half detailed Daisies from white cardstock. Adhere these detailed die cuts to the centers of the Lemon Lolly half Daisies.
- Die cut 1 large and 2 small Daisy centers from Lemon Lolly cardstock. Use a sponge dauber to darken around the edges of these pieces using Crushed Curry ink. Adhere the centers to the assembled flowers.
- Die cut 4 greenery sprigs - Cut 2 from Lemon Lolly cardstock, cut 1 from Garden Green cardstock and cut 1 from Pebbled Path cardstock.

# Cheerful Daisies Friendship Card

Project Sheet - Apr 17 2023

Carol Buckalew

[inkybeestampers@gmail.com](mailto:inkybeestampers@gmail.com)

<https://www.inkybeestampers.com>



3. Using the 4th to largest Deckled Rectangle Die, center the die on the Copper Clay piece of DSP that measures 5-3/8" x 4-1/8" then die cut to create a frame.
4. Adhere the DSP Panel measuring 4-1/4" x 3" to the card front, making sure to center the DSP from top to bottom and left to right. Adhere the DSP frame from Step #3 above on top of the flowered DSP on the card front.
5. Adhere the three assembled Daisies to the card front, towards the lower left of the DSP frame using Stampin' Dimensionals. Adhere Stampin' Dimensionals only around the centers of the flowers so that you will be able to tuck the greenery pieces under the Daisies. I adhered the largest Daisy first in the lower left corner, then slightly tucked the half Daisies around and under the larger Daisy. Adhere the greenery pieces around the three Daisies using liquid glue.
6. Stamp the sentiment "Your friendship means everything" onto the piece of Lemon Lolly cardstock using Crushed Curry ink. Use the sentiment die provided in the Cheerful Daisies Dies set to cut out. Adhere the sentiment label to the upper right corner of the card front.
7. On the inside panel, stamp several medium sized Daisies using Lemon Lolly ink. Stamp the centers of the Daisies using Crushed Curry ink. Adhere the inside panel to its Lemon Lolly mat, then adhere this unit to the inside of the card.

# Cheerful Daisies Friendship Card

Project Sheet - Apr 17 2023

Carol Buckalew

[inkybeestampers@gmail.com](mailto:inkybeestampers@gmail.com)

<https://www.inkybeestampers.com>



8. Stamp the same Daisy image onto the envelope front using Lemon Lolly ink, then stamp the center of the Daisy using Crushed Curry ink.
9. Adhere the coordinating piece of DSP to the envelope flap then trim the excess paper away from the flap.
10. Adhere multiple Adhesive-Backed Solid Gems in Copper Clay and Lemon Lolly to the card front to complete the card.

# Cheerful Daisies Friendship Card

Project Sheet - Apr 17 2023

Carol Buckalew

[inkybeestampers@gmail.com](mailto:inkybeestampers@gmail.com)

<https://www.inkybeestampers.com>



I have seen so many beautiful cards that Demonstrators are making using the Cheerful Daisies Bundle and Fresh as a Daisy Designer Series Paper...there certainly isn't a shortage of ideas for using this Bundle and DSP! Enjoy!

Additional products used to create this card are included on the next page. Product numbers for the items that will be available on May 2 are included under the supply list at the top of this document.



# Cheerful Daisies Friendship Card

Project Sheet - Apr 17 2023

Carol Buckalew

[inkybeestampers@gmail.com](mailto:inkybeestampers@gmail.com)

<https://www.inkybeestampers.com>



Deckled  
Rectangles Dies -  
159173

Price: \$30.00

Add to Cart



Sponge Daubers -  
133773

Price: \$5.00

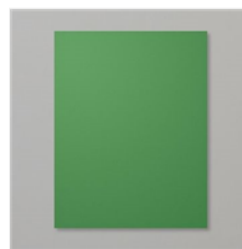
Add to Cart



Basic White 8-1/2"  
X 11" Cardstock -  
159276

Price: \$10.25

Add to Cart



Garden Green 8-  
1/2" X 11"  
Cardstock -  
102584

Price: \$9.25

Add to Cart



Basic White  
Medium Envelopes  
- 159236

Price: \$7.50

Add to Cart



Crushed Curry  
Classic Stampin'  
Pad - 147087

Price: \$8.00

Add to Cart



Multipurpose  
Liquid Glue -  
110755

Price: \$4.00

Add to Cart



Stampin'  
Dimensionals -  
104430

Price: \$4.25

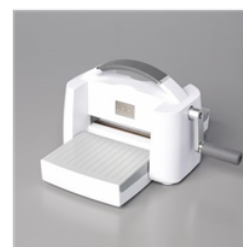
Add to Cart



Paper Trimmer -  
152392

Price: \$25.00

Add to Cart



Stampin' Cut &  
Emboss Machine -  
149653

Price: \$125.00

Add to Cart