

Charming Duck Pond Birthday Card

Project Sheet - May 9 2024

Carol Buckalew

inkybeestampers@gmail.com

<https://www.inkybeestampers.com>



Today's card was created using all of the products from the **Lily Pond Lane Suite Collection** which includes the **Charming Duck Pond Bundle** and the **Lily Pond Lane 6" x 6" Designer Series Paper**. Seriously...how cute are these little ducks swimming in their pond...complete with cattails and lily pads! Let's check out the card!

Supplies:

- Charming Duck Pond Bundle
- Lily Pond Lane 6" x 6" Designer Series Paper
- Deckled Circles Dies
- Adhesive-Backed Dappled Dots
- Baker's Twine Essentials Pack
- Cardstock: Basic White, Peach Pie, Gray Granite, Pretty Peacock
- Ink: Granny Apple Green, Pretty Peacock, Pebbled Path
- Stampin' Blends: Granny Apple Green, Peach Pie, Pretty Peacock, Pebbled Path, Pretty In Pink
- Blending Brush

Charming Duck Pond Birthday Card

Project Sheet - May 9 2024

Carol Buckalew

inkybeestampers@gmail.com

<https://www.inkybeestampers.com>

1. Card Cuts:

- Card Base - Cut 1 Peach Pie cardstock to 8-1/2" x 5-1/2", score at 4-1/4"
- DSP Panel #1 - From the Lily Pond Lane DSP, cut 1 Pretty Peacock dotted print to 5-3/8" x 4-1/8"
- DSP Panel #2 - From the Lily Pond Lane DSP, cut 1 Gray Granite dotted print to 5" x 2"
- Die Cut Circle - Cut 1 Basic White cardstock to approximately 2-3/4" x 2-3/4"
- Sentiment Label - Cut 1 Basic White cardstock to 2" x 1/2"
- Sentiment Label Mat - Cut 1 Peach Pie cardstock to 2-1/8" x 5/8"
- Die Cut Images: Scraps of Basic White, Gray Granite, Peach Pie and Pretty Peacock
- Inside Panel - Cut 1 Basic White cardstock to 5-3/8" x 4-1/8"
- Envelope Flap - Cut 1 piece of coordinating designer series paper to 6" x 2-1/4"

2. Adhere DSP Panel #1 to the card front using liquid glue.

3. On DSP Panel #2, cut a banner on each end of the panel using a pair of paper snips. I cut the banner ends a 1/2" deep. Adhere the banner to the card front using liquid glue and center the banner from top to bottom and left to right.

4. Stamp the "Happy Birthday" sentiment in Granny Apple Green ink onto the sentiment label. Adhere the label to its Peach Pie mat and set aside for now.

5. Prepare the Die Cut Pieces:

- Using the Deckled Rectangles Dies, cut a circle from white cardstock using the 5th from the smallest die. Use Post It Tape or Post It Notes to mask off half of the circle. Use a blending brush to blend Pretty Peacock ink onto half of the circle then remove the mask.
- Cut out 2 cattails from white cardstock. The die cuts two at one time. Use Stampin' Blends to color the cattails. I used Granny Apple Green to color the leaves and Pebbled Path to color the cattail heads.
- Cut out 3 lily pads from Pretty Peacock cardstock. The die cuts three at one time.
- Cut out 2 lily flowers from Peach Pie cardstock. The die cuts out two at one time. Use the dark shade of a Peach Pie Stampin' Blend to darken the centers of the lilies.
- Cut out the large detailed duck body (no feet) from Gray Granite cardstock. Die cut the wing and beak from Peach Pie Cardstock. Use the light shade of a Pretty in Pink Stampin' Blend to add some color to the embossed areas on the wing section. Adhere the wing and beak to the Gray Granite duck die cut. Use a Basic Black Stampin' Write Marker to darken the duck's eye.
- Cut out the detailed baby duck image two times - once from Gray Granite cardstock and once from Peach Pie cardstock (this will leave you with extra duck pieces that you will not use on the card). On the Peach Pie baby duck solid image, use a Basic Black Stampin' Write marker to darken the embossed eye of the baby duck. Then, adhere the Gray Granite open body baby duck over top of the Peach Pie baby duck. This open piece allows the beak to show. I saved the wing cut out in Peach Pie and shaded the embossed areas with a Pretty in Pink Stampin' Blend then adhered the wing to the

Charming Duck Pond Birthday Card

Project Sheet - May 9 2024

Carol Buckalew

inkybeestampers@gmail.com

<https://www.inkybeestampers.com>

open space on the baby duck's body.



6. Arrange the die cut pieces onto the die cut circle (the ink blended portion of the half circle should be on the bottom). Use liquid glue to adhere a cattail to the right and left of the circle. Adhere the lily pads at the bottom of the circle, then adhere the two lily flowers to two of the lily pads. Adhere the large duck and the baby duck to the circle using Stampin' Dimensionals. Adhere the circle to the upper center of the card front using Stampin' Dimensionals. I cut down a dimensional to help support the cattails that are hanging over the circle's edge. Adhere the sentiment label below the circle image and to the right.
7. On the inside panel, stamp the sentiment "have a lovely day" in Granny Apple Green ink. Use the two-step stamps to stamp the cattail leaves in Granny Apple Green then stamp the cattails in Pebbled Path. Stamp the frog and lily pad image to the right of the cattails. Use Stampin' Blends in Pretty Peacock and Granny Apple Green to color in the frog image. Without reinking the Blending Brush you used to blend on the die cut circle, blend Pretty Peacock ink at the base of the stamped cattail and frog images to give the appearance of water. Adhere the panel to the inside of the card.

Charming Duck Pond Birthday Card

Project Sheet - May 9 2024

Carol Buckalew

inkybeestampers@gmail.com

<https://www.inkybeestampers.com>



8. On the envelope front, repeat stamping of the cattail image using Granny Apple Green and Pebbled Path ink. Blend Pretty Peacock ink at the base of the stamped image.
9. Adhere the coordinating piece of designer series paper to the envelope flap and use a small pair of scissors or paper snips to trim the excess paper away from the flap.
10. Use a Peach Pie Stampin' Blend to color a length of white Baker's Twine. Allow the twine to dry for a few minutes then time a small blow and adhere the bow at the upper left corner of the sentiment label using a Mini Glue Dot.
11. Adhere three Gray Granite Adhesive-Backed Dappled Dots to the card front to complete the project.

Charming Duck Pond Birthday Card

Project Sheet - May 9 2024

Carol Buckalew

inkybeestampers@gmail.com

<https://www.inkybeestampers.com>



This completes the card! I can't wait to have another play with the Lily Pond Lane Suite! So cute!
Products used to create this card are included on the next page!

Charming Duck Pond Birthday Card

Project Sheet - May 9 2024

Carol Buckalew

inkybeestampers@gmail.com

<https://www.inkybeestampers.com>



Charming Duck Pond Bundle
(English) - 163350

Price: \$46.75

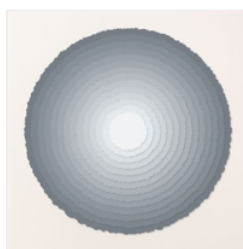
Add to Cart



Lily Pond Lane 6"
X 6" (15.2 X 15.2
Cm) Designer
Series Paper -
163342

Price: \$12.50

Add to Cart



Deckled Circles
Dies - 162286

Price: \$37.00

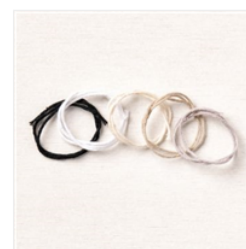
Add to Cart



Adhesive-Backed
Dappled Dots -
163353

Price: \$8.00

Add to Cart



Baker's Twine
Essentials Pack -
155475

Price: \$11.00

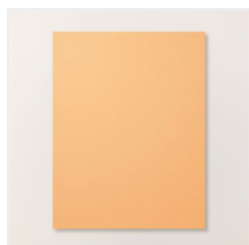
Add to Cart



Basic White 8-1/2"
X 11" Cardstock -
159276

Price: \$13.00

Add to Cart



Peach Pie 8-1/2" X
11" Cardstock -
163799

Price: \$11.50

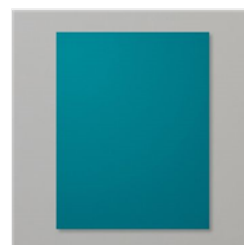
Add to Cart



Gray Granite 8-
1/2" X 11"
Cardstock -
146983

Price: \$11.50

Add to Cart



Pretty Peacock 8-
1/2" X 11"
Cardstock -
150880

Price: \$11.50

Add to Cart



Granny Apple
Green Classic
Stampin' Pad -
147095

Price: \$9.00

Add to Cart



Pretty Peacock
Classic Stampin'
Pad - 150083

Price: \$9.00

Add to Cart



Pebbled Path
Classic Stampin'
Pad - 161648

Price: \$9.00

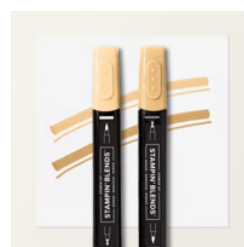
Add to Cart



Granny Apple
Green Stampin'
Blends Combo
Pack - 154885

Price: \$11.00

Add to Cart



Peach Pie
Stampin' Blends
Combo Pack -
163827

Price: \$11.00

Add to Cart



Pretty Peacock
Stampin' Blends
Combo Pack -
161676

Price: \$11.00

Add to Cart

Charming Duck Pond Birthday Card

Project Sheet - May 9 2024

Carol Buckalew

inkybeestampers@gmail.com

<https://www.inkybeestampers.com>



Pebbled Path
Stampin' Blends
Combo Pack -
161658

Price: \$11.00

Add to Cart



Pretty In Pink
Stampin' Blends
Combo Pack -
163824

Price: \$11.00

Add to Cart



Blending Brushes -
153611

Price: \$15.00

Add to Cart