

# Ringed With Nature Thinking of You Card

## Project Sheet

Carol Buckalew

[inkybeestampers@gmail.com](mailto:inkybeestampers@gmail.com)

<https://www.inkybeestampers.com>



The Ringed With Nature Bundle is amazing and makes great cards for any occasion, including cards for guys! The bundle includes the Ringed With Nature Stamp Set and the Tree Rings Hybrid Embossing Folder. What's really cool about the Tree Rings Hybrid Embossing Folder is that it coordinates with the Rings of Love 12" x 12" Designer Series Paper. If you purchase the Ringed With Nature Bundle, you can get the Rings of Love DSP for FREE during Sale-A-Bration. The hybrid embossing folder lets you emboss and die cut the tree rings all at the same time. And, dies are included that will cut out some of the tree rings on the DSP! It's a win-win! And...check out the adorable acorns! They are so cute! On to the card!

### 1. Card Cuts:

- Card Base - Cut 1 Night of Navy cardstock to 11" x 4-1/4", score at 5-1/2"
- Mat - Cut 1 Crushed Curry to 5" x 3-3/4"
- DSP Panel - Cut 1 DSP with Crushed Curry and white background to 4-7/8" x 3-5/8"
- Scraps of Basic White cardstock for die cutting tree limbs and leaves
- Scraps of Crumb Cake for cutting Acorns and Tree Rings
- DSP from Rings of Love (house pattern) for die cutting circle

# Ringed With Nature Thinking of You Card

## Project Sheet

Carol Buckalew

[inkybeestampers@gmail.com](mailto:inkybeestampers@gmail.com)

<https://www.inkybeestampers.com>

- Scrap of Soft Suede for die cutting circle for sentiment mat
  - Inside Panel - Cut 1 Basic White cardstock to 5-3/8 x 4-1/8"
  - Envelope Flap - Cut 1 coordinating DSP (Crushed Curry and white background) to 6" x 2-3/4"
2. I started by die cutting the following:
- Tree rings in Crumb Cake cardstock. I first embossed and die cut a group of tree rings in Crumb Cake. I only needed one, but I put the others inside of my die envelope to save for future projects.
  - Small tree ring in Crumb Cake to use for the sentiment label.
  - Die cut 1 circle in Soft Suede using the 2-3/8" circle from the Layering Circles Dies
  - Die cut 1 house from the Rings of Love DSP (house with Night of Navy roof) using the 2-1/8" circle from the Layering Circles Dies
  - From Basic White cardstock, die cut 3 acorns (body and top), and the four tree branches from the dies in the Tree Rings Hybrid Embossing Folder set.
3. Using the dark shade of the Crumb Cake Stampin' Blends, color the stem of the acorn tops and darken the cross-hatched lines in the acorn tops. Shade the acorn bodies using the same Stampin' Blend. Using the dark shade of the Crumb Cake Stampin' Blends, darken the outer ring on the sentiment label mat. Adhere the acorn tops to the acorn bodies using a small amount of glue.
4. Using the Crumb Cake and Granny Apple Green Stampin' Blends color the tree limbs and leaves.
5. Using the sentiment "Thinking of you" from the Ringed With Nature stamp set, stamp the sentiment in Soft Suede ink onto the smaller Crumb Cake tree ring. Adhere the sentiment label to the larger die cut tree ring.
6. Adhere the DSP panel to its Crushed Curry mat, then adhere this unit to the card base front.
7. Adhere the die cut house from the Rings of Love DSP to its Soft Suede mat, then use Stampin' Dimensionals to adhere this to the card front. Place in the upper left-hand corner of the card front.
8. Using Stampin' Dimensionals, adhere the sentiment label to the lower right-hand corner of the card front.
9. Using small drops of glue, tuck three of the tree limbs/leaves under the circle with the house. I tucked two of the limbs on the upper right of the circle and one on the lower left of the circle. Tuck one branch under the lower left of the sentiment label. It's okay if the limbs extend beyond the matted DSP panel, just so long as they don't extend beyond the card base.
10. Using small drops of glue, adhere one acorn to the limb in the upper right of the card front, one on the left tree limb, and one acorn on the sentiment label.
11. Tie a double bow from Linen thread and adhere to the sentiment label using a Mini Glue dot.
12. For the inside panel and envelope front - Stamp the tree ring onto a Post-It Note, then fussy cut around the tree ring. Set this mask aside for a minute, then, stamp the tree ring using

# Ringed With Nature Thinking of You Card

## Project Sheet

Carol Buckalew

[inkybeestampers@gmail.com](mailto:inkybeestampers@gmail.com)

<https://www.inkybeestampers.com>

Soft Suede ink on the lower right of the inside panel and the lower right of the envelope front. Place the Post-It mask you created over the stamped tree rings to then stamp the leaf image from the Ringed With Nature stamp set. Stamp using Granny Apple Green ink. Use the light shade of the Crumb Cake Stampin' Blends to color in all of the white areas on the stamped tree rings. **Caution: When coloring the tree ring image on the envelope, be sure to place a scrap piece of cardstock or paper inside of the envelope to prevent bleed through.**

13. Adhere the inside panel to the inside of the card base.
14. Adhere the coordinating DSP to the envelope flap then fussy cut around the flap to finish off the envelope.



The card is complete! This card was quick to assemble once all of the die cutting was complete. I hope you give it a try, but **remember to purchase the bundle before August 31 so you can earn the free Rings of Love Designer Series Paper from the Sale-A-Bration catalog! Don't delay too long though as Sale-A-Bration products are only while supplies last and this paper is very popular!**

Products used to make this card are included on the next page.

# Ringed With Nature Thinking of You Card

## Project Sheet

Carol Buckalew

[inkybeestampers@gmail.com](mailto:inkybeestampers@gmail.com)

<https://www.inkybeestampers.com>



Ringed With Nature Bundle (English) - 159889

Price: \$53.00

Add to Cart



Rings Of Love 12" X 12" (30.5 X 30.5 Cm) Designer Series Paper - 159939

Price: \$0.00

Add to Cart



Layering Circles Dies - 151770

Price: \$35.00

Add to Cart



Night Of Navy 8-1/2" X 11" Cardstock - 100867

Price: \$9.25

Add to Cart



Crushed Curry 8-1/2" X 11" Cardstock - 131199

Price: \$9.25

Add to Cart



Crumb Cake 8-1/2" X 11" Cardstock - 120953

Price: \$9.25

Add to Cart



Basic White 8-1/2" X 11" Cardstock - 159276

Price: \$10.25

Add to Cart



Basic White Medium Envelopes - 159236

Price: \$7.50

Add to Cart



Soft Suede Classic Stampin' Pad - 147115

Price: \$8.00

Add to Cart



Granny Apple Green Classic Stampin' Pad - 147095

Price: \$8.00

Add to Cart



Crumb Cake Stampin' Blends Combo Pack - 154882

Price: \$9.00

Add to Cart



Granny Apple Green Stampin' Blends Combo Pack - 154885

Price: \$9.00

Add to Cart



Linen Thread - 104199

Price: \$5.00

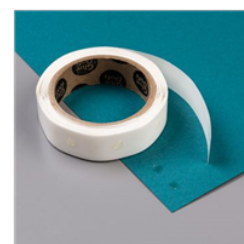
Add to Cart



Multipurpose Liquid Glue - 110755

Price: \$4.00

Add to Cart



Mini Glue Dots - 103683

Price: \$5.25

Add to Cart

# Ringed With Nature Thinking of You Card

## Project Sheet

Carol Buckalew

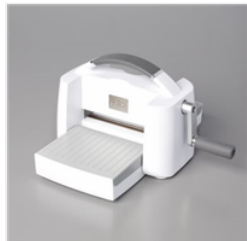
[inkybeestampers@gmail.com](mailto:inkybeestampers@gmail.com)  
<https://www.inkybeestampers.com>



Paper Trimmer -  
152392

Price: \$25.00

Add to Cart



Stampin' Cut &  
Emboss Machine -  
149653

Price: \$125.00

Add to Cart