

# Autumn Leaves One-Piece Gift Box

Project Sheet - Sept 5 2024

Carol Buckalew

[inkybeestampers@gmail.com](mailto:inkybeestampers@gmail.com)

<https://www.inkybeestampers.com>



Today's project is an autumn-themed one-piece gift box. I used a 12" x 12" piece of cardstock to create this box and the Autumn Leaves Stamp Set and Autumn Leaves Dies, along with paper from Flowering Zinnias 12" x 12" Designer Series Paper were used to decorate the box. This box measures 2 x 2 x 4 and is the perfect size to gift small items or fill it with treats! And the box can be decorated for any occasion! The one-piece design allows you to store the boxes flat, too.

## Supplies:

- Regals 12" x 12" Cardstock (Crushed Curry)
- Autumn Leaves Stamp Set
- Autumn Leaves Dies
- Stylish Shapes Dies
- Flowering Zinnias 12" x 12" Designer Series Paper
- Textured Metallic 12" x 12" Specialty Paper
- Linen Thread
- Gold Textured Adhesive-Backed Dots
- Additional Cardstock: Cherry Cobbler, Basic White
- Ink: Crushed Curry, Cherry Cobbler

### 1. Cardstock Cuts & Scoring:

- Box - Cut 1 Crushed Curry cardstock to 12" x 8-1/2"  
With the short edge facing up, score at 1/2", 2-1/2", 4-1/2", and 6-1/2"  
Rotate the cardstock one turn, then score on the long edge at 2", 4", 8", and 10"
- Designer Series Paper Panels  
Cut 1 piece of designer series paper to 1-7/8" x 1-7/8"

# Autumn Leaves One-Piece Gift Box

Project Sheet - Sept 5 2024

Carol Buckalew

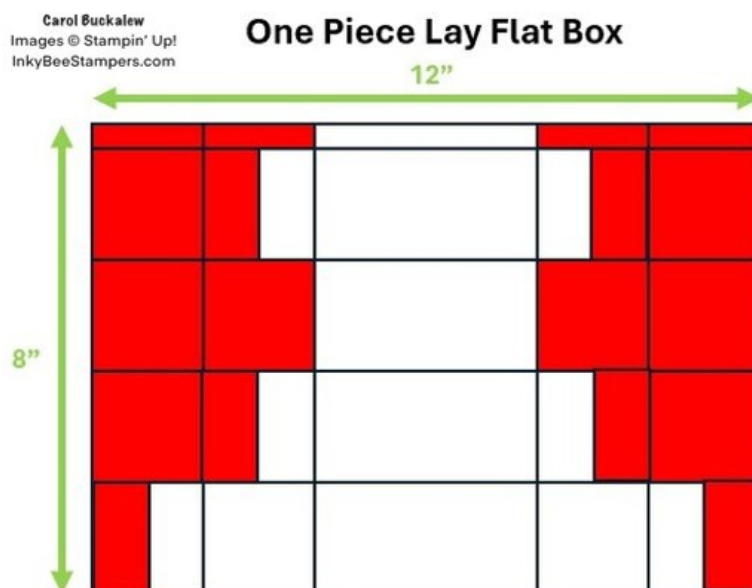
[inkybeestampers@gmail.com](mailto:inkybeestampers@gmail.com)

<https://www.inkybeestampers.com>

Cut 4 designer series paper pieces to 3-7/8" x 1-7/8"

- Die Cut Leaves - Small scraps of Crushed Curry (hint: use the cut-away pieces from the box) and Cherry Cobbler
- Leaf Veins - Small scrap of Copper Textured Metallic Specialty Paper
- Sentiment Label - Cut 1 Basic White cardstock to approximately 3" x 3/4"

2. Score and cut the box base as directed above. Using the diagram below, cut away all scored sections indicated in red on the diagram. Note that some of the scored squares are cut in half. Cut a wedge on each side of the tabs. There are a total of 7 tabs including the 1/2" tab.



- On 8-1/2" side, score at 1/2", 2-1/2", 4-1/2", and 6-1/2"
- On 12" side, score at 2", 4", 8", and 10"
- Cut away all areas indicated in red above.
- Cut a wedge on all tabs (7 in total which includes the 1/2" tab).

3. Position the box base so that the 1/2" tab is facing left. Apply Tear & Tape to the 1/2" tab. I used two strips of Tear & Tape. Turn the box base over so that it is wrong side up and the 1/2" tab is on the left. Fold over the first the first two sections on the left and remove the Tear & Tape covers. Now fold over the section on the right and adhere the box sides together. Shape the box to form a square tube and tuck in the sides and top on each end to complete the box.
4. Adhere the designer series paper panels to the box using liquid glue.
5. On one of the Crushed Curry cardstock scraps cut away from the box base, use the Autumn Leaves Stamp Set to stamp the double leaf image in Crushed Curry ink. Use the Autumn Leaves Dies to cut out the stamped double leaf image then cut out two (2) small maple leaves from Cherry Cobbler cardstock. Use a scrap piece of Copper Textured Metallic Specialty Paper to cut out the leaf veins for the Crushed Curry Leaves.

# Autumn Leaves One-Piece Gift Box

Project Sheet - Sept 5 2024

Carol Buckalew

[inkybeestampers@gmail.com](mailto:inkybeestampers@gmail.com)

<https://www.inkybeestampers.com>



6. Adhere the copper veins to the Crushed Curry Leaves using liquid glue and cut the stem off of the leaf set. Adhere the two maple leaves towards the top of the box front so that they fan out to the left and right. Apply a small amount of Stampin' Seal at the base of the maple leaves, then loop a length of Linen Thread and attach to the Stampin' Seal. Adhere the small Crushed Curry leaves over top of the looped thread using liquid glue.
7. Stamp the "With a grateful heart" sentiment onto a scrap piece of white cardstock using Cherry Cobbler ink. Use the long slender label die from the Stylish Shapes Dies to cut out the sentiment. Apply a double stack of Stampin' Dimensionals to the center and right of the sentiment label, then adhere the label to the box front. The left edge will sit on top of the leaves and does not require a Stampin' Dimensional under this section.



# Autumn Leaves One-Piece Gift Box

## Project Sheet - Sept 5 2024

Carol Buckalew  
[inkybeestampers@gmail.com](mailto:inkybeestampers@gmail.com)  
<https://www.inkybeestampers.com>

8. Adhere a Gold Textured Adhesive-Backed Dot to the left of the sentiment label.



This completes the project! I had a lot of fun creating this little box and I love that it will store flat until I'm ready to use it!



# Autumn Leaves One-Piece Gift Box

Project Sheet - Sept 5 2024

Carol Buckalew

[inkybeestampers@gmail.com](mailto:inkybeestampers@gmail.com)

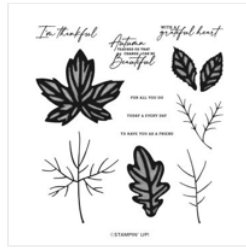
<https://www.inkybeestampers.com>



[Regals 12" X 12"](#)  
[\(30.5 X 30.5 Cm\)](#)  
[Cardstock -](#)  
[161713](#)

Price: \$15.00

[Add to Cart](#)



[Autumn Leaves](#)  
[Photopolymer](#)  
[Stamp Set](#)  
[\(English\) - 162179](#)

Price: \$24.00

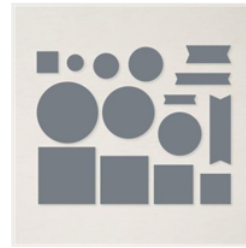
[Add to Cart](#)



[Autumn Leaves](#)  
[Dies - 162185](#)

Price: \$38.00

[Add to Cart](#)



[Stylish Shapes](#)  
[Dies - 159183](#)

Price: \$30.00

[Add to Cart](#)



[Textured Metallic](#)  
[12" X 12" \(30.5 X](#)  
[30.5 Cm\) Specialty](#)  
[Paper - 163772](#)

Price: \$8.50

[Add to Cart](#)



[Flowering Zinnias](#)  
[12" X 12" \(30.5 X](#)  
[30.5 Cm\) Designer](#)  
[Series Paper -](#)  
[163469](#)

Price: \$12.50

[Add to Cart](#)



[Linen Thread -](#)  
[104199](#)

Price: \$5.00

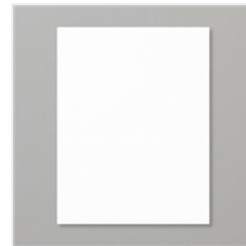
[Add to Cart](#)



[Cherry Cobbler 8-1/2"](#)  
[1/2" X 11"](#)  
[Cardstock -](#)  
[119685](#)

Price: \$11.50

[Add to Cart](#)



[Basic White 8-1/2"](#)  
[X 11" Cardstock -](#)  
[159276](#)

Price: \$13.00

[Add to Cart](#)



[Crushed Curry](#)  
[Classic Stampin'](#)  
[Pad - 147087](#)

Price: \$9.00

[Add to Cart](#)



[Cherry Cobbler](#)  
[Classic Stampin'](#)  
[Pad - 147083](#)

Price: \$9.00

[Add to Cart](#)