

Swinging Sloths

Gramma's Stamp Camp--Jungle Pals

Candy Rattray

210-355-5729

candy@sweetstamper.com

<http://sweetstamper.com>



Measurements:

- Lost Lagoon Cardstock: 11" x 4-1/4" scored and folded at 5-1/2"
- Wild Wheat Cardstock: 5-1/2" x 3-3/4"
- Early Espresso Cardstock: 5-1/2" x 2-1/4" for die-cutting
- Calypso Coral Cardstock: 2-3/4" x 2"
- Basic White Cardstock: 3" x 2-1/2" for die-cutting
- Garden Green Cardstock: 2-1/2" x 2" for die-cutting
- Petal Pink Cardstock: 2" x 2" for die-cutting
- Designer Series Paper: 5-1/2" x 3"

Instructions:

1. Layer DSP to Wild Wheat Cardstock and then to card front with Seal.
2. Using Stampin' Cut & Emboss Machine, run Early Espresso Cardstock thru with tree trunk die, Calypso Coral thru with tag die, Petal Pink Cardstock thru with flower dies, and Garden Green Cardstock thru with leaf dies (to create 3 leaves).
3. Adhere tree trunk to card front using Glue, cutting off left side and ends as it will be longer than the card. Don't stick down the ends of branches just yet. You will want to tuck them around the sloths first.
4. Stamp greeting with Tuxedo Black ink on Calypso Coral tag and adhere to side of card with Seal.
5. Stamp 2 sloths on Basic White Cardstock and color with Dark and Light Crumb Cake and Light Smoky Slate Blends Markers. Cut out with Cut & Emboss Machine and add 2 dimensionals to each back. Position sloths as shown and adhere ends of branches with Liquid Glue.
6. Add a bit of Glue on back of leaves and tuck them in as shown, pressing to adhere. Do the same with flowers (I used Glue Dots).
7. Add a small brown sequin to flower centers and then 3 large ones at bottom right of card.

Swinging Sloths

Gramma's Stamp Camp--Jungle Pals

Candy Rattray
210-355-5729

candy@sweetstamper.com
<http://sweetstamper.com>



[Jungle Pals Cling Stamp Set - 162950](#)

Price: \$0.00



[Jungle Pals Dies - 162973](#)

Price: \$0.00



[Tuxedo Black Memento Ink Pad - 132708](#)

Price: \$8.00



[Gray Granite Stampin' Blends Combo Pack - 154886](#)

Price: \$11.00



[Crumb Cake Stampin' Blends Combo Pack - 154882](#)

Price: \$11.00



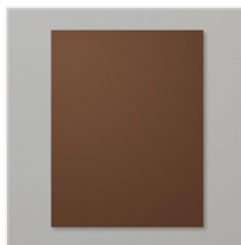
[Lost Lagoon 8-1/2 X 11" Cardstock - 133679](#)

Price: \$11.50



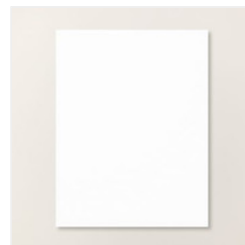
[Calypso Coral 8-1/2 X 11" Cardstock - 122925](#)

Price: \$11.50



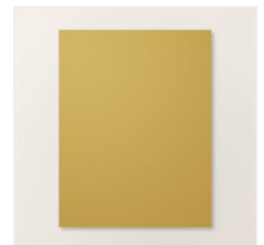
[Early Espresso 8-1/2 X 11" Cardstock - 119686](#)

Price: \$11.50



[Basic White 8-1/2 X 11" Cardstock - 166780](#)

Price: \$14.00



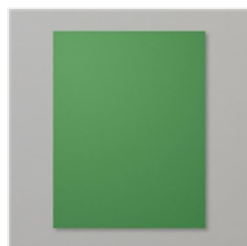
[Wild Wheat 8-1/2 X 11" Cardstock - 161725](#)

Price: \$11.50



[Petal Pink 8-1/2 X 11" Cardstock - 146985](#)

Price: \$11.50



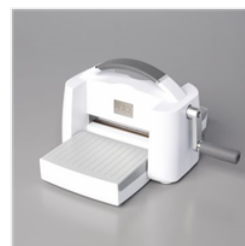
[Garden Green 8-1/2 X 11" Cardstock - 102584](#)

Price: \$11.50



[2023-2025 In Color™ 6" X 6" \(15.2 X 15.2 Cm\) Designer Series Paper - 163778](#)

Price: \$12.50



[Stampin' Cut & Emboss Machine - 149653](#)

Price: \$130.00



[Unbounded Love Dies - 163383](#)

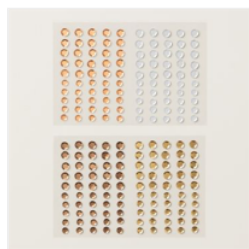
Price: \$36.00

Swinging Sloths

Gramma's Stamp Camp--Jungle Pals

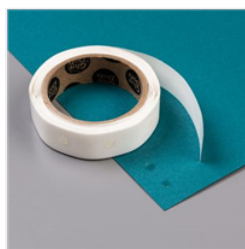
Candy Rattray
210-355-5729

candy@sweetstamper.com
<http://sweetstamper.com>



[Neutrals Adhesive-
Backed Sequins -
161627](#)

Price: \$7.50



[Mini Glue Dots -
103683](#)

Price: \$7.25



[Multipurpose
Liquid Glue -
110755](#)

Price: \$6.00



[Stampin' Seal -
152813](#)

Price: \$8.00



[Stampin'
Dimensionals -
104430](#)

Price: \$4.25