

# Lady & Girl Card

## Beautiful Moments Card Class

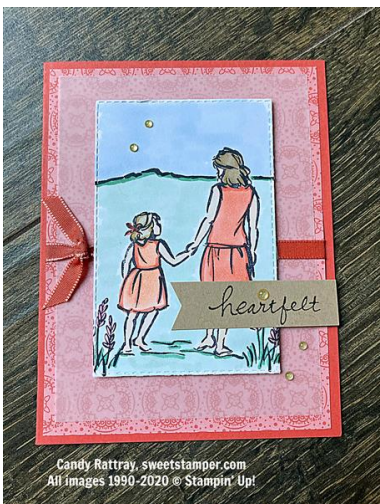
Candy Rattray  
210-355-5729

[candy@sweetstamper.com](mailto:candy@sweetstamper.com)  
<http://sweetstamper.com>



*handmade, heartfelt...with a touch of class*

Candy R  
Independent Stampin' Up! Demo



### Measurements:

- Terracotta Tile Cardstock: 8-1/2" x 5-1/2" scored and folded at 4-1/4"
- Vellum Cardstock: 5" x 3-3/4"
- Whisper White Cardstock: 5-1/4" x 4", 4-1/2" x 3"
- Crumb Cake Cardstock: 2-3/4" x 3/4"
- DSP: 5-1/4" x 4"

### Instructions:

1. Adhere Vellum to DSP with Seal--making sure you only adhere in the center so the adhesive is hidden. Lay 5" length of Terracotta Tile ribbon over the center and adhere ends to back with Mini Glue Dots. Layer this entire panel to card front with Stampin' Seal.
2. Stamp a few of the flowers on 5-1/4" x 4" Whisper White Cardstock with Tuxedo Black ink. Color flowers with light Flirty Flamingo Blends and outline stems and grass with Dark Just Jade Blend. Layer to inside of card with Seal.
3. Run remaining Whisper White Cardstock through die-cutting machine with Stitched Rectangle die. Stamp lady and girl image on front with Tuxedo Black ink. Using a mask, stamp mountain with Tuxedo Black ink. Color scene as follows:
  1. Outline mountain, grass, and flower stems with Dark Just Jade . Color the hillsides with

# Lady & Girl Card

## Beautiful Moments Card Class

Candy Rattray  
210-355-5729

[candy@sweetstamper.com](mailto:candy@sweetstamper.com)  
<http://sweetstamper.com>

Light Just Jade.

2. Color sky with Light Seaside Spray.
  3. Color hair with Dark Crumb Cake Blend. Use the Color Lifter on the girl's hair to lighten it.
  4. Outline both dressed with Dark Calypso Coral. Color lady's dress with Dark Blend and the girl's dress with Light Blend.
  5. Color all skin with Ivory Blend.
  6. Color flowers with Light Flirty Flamingo Blend.
4. Adhere your scene to card front with Stampin' Dimensionals. Stamp greeting with Tuxedo Black ink and flag left side. Adhere to card front with a Stampin' Dimensional on right and Seal on left.



[Beautiful Moments Cling Stamp Set - 151677](#)

Price: \$23.00



[Lovely You Cling Stamp Set \(English\) - 152525](#)

Price: \$24.00



[Tuxedo Black Memento Ink Pad - 132708](#)

Price: \$6.00



[Crumb Cake Stampin' Blends Combo Pack - 154882](#)

Price: \$9.00



[Calypso Coral Stampin' Blends Combo Pack - 154881](#)

Price: \$9.00



[Just Jade Stampin' Blends Combo Pack - 153107](#)

Price: \$9.00



[Flirty Flamingo Stampin' Blends Combo Pack - 154884](#)

Price: \$9.00



[Bronze & Ivory Stampin' Blends Combo Pack - 157040](#)

Price: \$9.00



[Stampin' Blends Color Lifter - 144608](#)

Price: \$4.50



[Terracotta Tile 8-1/2" X 11" Cardstock - 150884](#)

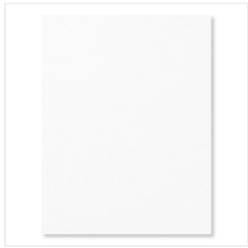
Price: \$8.75

# Lady & Girl Card

## Beautiful Moments Card Class

Candy Rattray  
210-355-5729

[candy@sweetstamper.com](mailto:candy@sweetstamper.com)  
<http://sweetstamper.com>



[Whisper White 8-1/2" X 11" Cardstock - 100730](#)

Price: \$9.75



[Crumb Cake 8-1/2" X 11" Cardstock - 120953](#)

Price: \$8.75



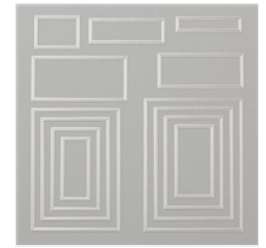
[Vellum 8-1/2" X 11" Cardstock - 101856](#)

Price: \$10.00



[Ornate Garden Specialty Designer Series Paper - 152488](#)

Price: \$15.00



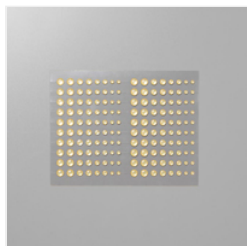
[Stitched Rectangles Dies - 151820](#)

Price: \$35.00



[Ornate Garden Ribbon Combo Pack - 152479](#)

Price: \$7.00



[Gold Glitter Enamel Dots - 152155](#)

Price: \$8.00



[Stampin' Seal - 152813](#)

Price: \$8.00



[Mini Glue Dots - 103683](#)

Price: \$5.25



[Stampin' Dimensionals - 104430](#)

Price: \$4.00

Add All to Cart