

ONLINE CLASS: How to create the Distressed Metal Technique - Part 5 in my Waterfront Series

Tami White

tami@stampwithtami.com

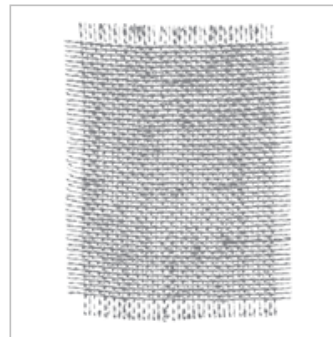
www.stampwithtami.com



[Waterfront Photopolymer Stamp Set](#)
146386



[Layering Love Clear-Mount Stamp Set](#)
141965



[Burlap Clear-Mount Stamp Set](#)
143982



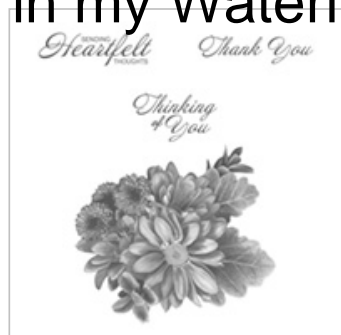
[One Wild Ride Clear-Mount Stamp Set](#)
141724

ONLINE CLASS: How to create the Distressed Metal Technique - Part 5 in my Waterfront Series

Tami White

tami@stampwithtami.com

www.stampwithtami.com



[Heartfelt Blooms](#)
[Clear-Mount Stamp](#)

[Set](#)
147202



[Basic Black Archival](#)
[Stampin' Pad](#)

140931



[VersaMark Pad](#)

102283



[Crumb Cake Classic](#)
[Stampin' Pad](#)

126975



[Neutrals 8-1/2" X 11"](#)
[Cardstock](#)

131191



[Copper Foil Sheets](#)

142020



[Gold Foil Sheets](#)

132622



[Silver Foil Sheets](#)

132178

ONLINE CLASS: How to create the Distressed Metal Technique - Part 5 in my Waterfront Series

Tami White

tami@stampwithtami.com

www.stampwithtami.com



[Basic Black 3/8" Shimmer Ribbon](#)

144129



[1/4" Copper Trim](#)

144179



[Stamping Sponges](#)

141337



[Heat Tool \(Us And Canada\)](#)

129053



[Embossing Buddy](#)

103083



[Copper Stampin' Emboss Powder](#)

141636



[Gold Stampin' Emboss Powder](#)

109129



[Silver Stampin' Emboss Powder](#)

109131

ONLINE CLASS: How to create the Distressed Metal Technique - Part 5 in my Waterfront Series

Tami White

tami@stampwithtami.com

www.stampwithtami.com



[Snail Adhesive](#)

104332



[Metallics Sequin](#)

[Assortment](#)

144214