

Sweetest Christmas [Party Cracker Series #7]

Tami White
tami@stampwithtami.com
www.stampwithtami.com



See my video for how to make these party crackers and gift boxes.

PARTY CRACKERS:

- Designer Paper for Cracker Box Die: 6" x 5-1/4" each
- Cut cracker box with die.
- Assemble the cracker boxes and tie ribbon.

BOX:

- **BOX BASE - CARD STOCK:** 10-3/8" X 10-3/8"
- **BOX LID - DESIGNER PAPER:** 10-1/2" X 10-1/2"
- **WINDOW SHEET:** 5-1/2" X 4"
- **SCORE:** 1-1/4" & 2-1/2" on all sides
- Cut the corners as shown in yellow on the template
- Cut the largest Stitched Rectangle die from the center for window (see video)
- Assemble the box with Seal +
- Assemble the rest of the box.

BELLY BAND:

- 2 Strips of Garden Green: 11" x 1" & 6" x 1"
- Attach the 2 strips together.
- Wrap the strips around the box and score at each fold with the Bone Folder as you go.
- Stamp and emboss the words.
- Die cut the words and label.

Sweetest Christmas [Party Cracker Series #7]

Tami White
tami@stampwithtami.com
www.stampwithtami.com



Cracker & Treat
Box Dies - 159182



Sweetest
Christmas Suite
Collection
(English) - 159579



Sweetest
Christmas 12" X
12" (30.5 X 30.5
Cm) Designer
Series Paper -
159559



Brightest Glow
Bundle (English) -
159552



Gold & Rose Gold
6" X 6" (15.2 X
15.2 Cm) Metallic
Specialty Paper -
156844



Real Red 8-1/2" X
11" Cardstock -
102482



Garden Green 8-
1/2" X 11"
Cardstock -
102584



VersaMark Pad -
102283



Basics Embossing
Powders - 155554



Heat Tool - 129053



Simply Scored
Scoring Tool -
122334



Window Sheets -
142314



Real Red &
Garden Green 3/8"
(1 Cm) Ribbon
Combo Pack -
159577



Linen Thread -
104199



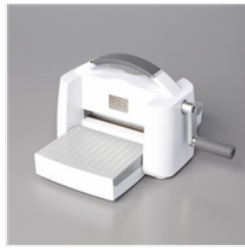
Flat Jingle Bell
Trinkets - 159980

Sweetest Christmas [Party Cracker Series #7]

Tami White
tami@stampwithtami.com
www.stampwithtami.com



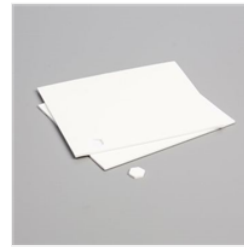
Rectangle Stitched
Dies - 151820



Stampin' Cut &
Emboss Machine -
149653



Stampin' Seal -
152813



Stampin'
Dimensionals -
104430



Stampin' Seal+ -
149699



Bone Folder -
102300