

# Queen Bee Bundle Meets the Smooching Technique!

Laura Milligan  
[laura@lauramilligan.com](mailto:laura@lauramilligan.com)  
[www.lauramilligan.com](http://www.lauramilligan.com)

*bee creative*  
**TUTORIAL**  
*www.lauramilligan.com*



## MEASUREMENTS:

- Basic Black or Crumb Cake Card Bases - 5 1/2 x 8 1/2, scored at 4 1/4
- Basic Black or Soft Suede Layers - 5 1/8 x 4 7/8, 3 x 3 layer adhered to an Adhesive Sheet
- Fluid 100 Watercolor Paper - Full Sheet for Smooching Technique, 3 3/4 x 5 Layers
- Basic White Card Stock - 3 x 3 for Stamping

# Queen Bee Bundle Meets the Smooching Technique!

Laura Milligan  
[laura@lauramilligan.com](mailto:laura@lauramilligan.com)  
[www.lauramilligan.com](http://www.lauramilligan.com)



## INSTRUCTIONS:

1. Burnish the fold of the card base with a Bone Folder.
2. Adhere the card stock layer to the card base with Stampin' Dimensionals.
3. Smooch or stamp the Fluid 100 Watercolor layer with Soft Suede or Tuxedo Black Memento Ink. Adhere with Multipurpose Liquid Glue.
4. Smooch the full sheet of Fluid 100 Watercolor paper with Crushed Curry Ink. Crop with all sizes of hexagons dies (Beautiful Shapes). Stamp the sentiment in coordinating ink onto the bottom of one hexagon. Adhere as shown with Dimensionals and Liquid Glue.
5. Crop the Basic Black or Soft Suede layers (with Adhesive Sheets adhered) with the small hexagon die (Queen Bee Dies). Adhere as shown by removing the adhesive backing.
6. Use a Stamparatus to stamp the bees onto the Basic White card stock. Rub with an Embossing Buddy. Stamp again with Versamark. Cover with Clear Embossing Powder, then set with a Heat Tool. Crop with a Stampin' Cut & Emboss Machine and the coordinating Queen Bee Dies. Adhere as shown with Stampin' Dimensionals.
7. Embellish with Classic Matte or Rustic Metallic Dots.

# Queen Bee Bundle Meets the Smooching Technique!

Laura Milligan  
[laura@lauramilligan.com](mailto:laura@lauramilligan.com)  
[www.lauramilligan.com](http://www.lauramilligan.com)



## Smooching Technique:

1. Use a Stampin' Spritzer to spray water onto a piece of Fluid 100 Watercolor Paper.
2. Use the edge of an ink pad to add color to a scrap of Window Sheet.
3. Gently touch the Window Sheet to the watercolor paper to transfer the color.
4. Allow to dry completely.



# Queen Bee Bundle Meets the Smooching Technique!

Laura Milligan  
[laura@lauramilligan.com](mailto:laura@lauramilligan.com)  
[www.lauramilligan.com](http://www.lauramilligan.com)



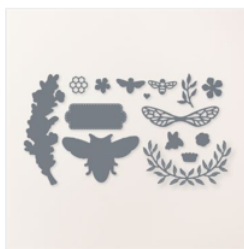
Queen Bee Bundle  
(English) - 160485

Price: \$49.50



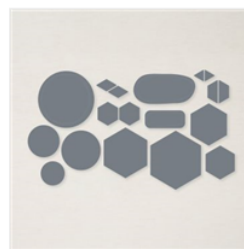
Queen Bee Cling  
Stamp Set  
(English) - 160476

Price: \$23.00



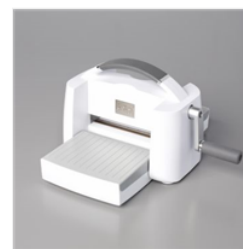
Queen Bee Dies -  
160484

Price: \$32.00



Beautiful Shapes  
Dies - 158046

Price: \$29.00



Stampin' Cut &  
Emboss Machine -  
149653

Price: \$125.00



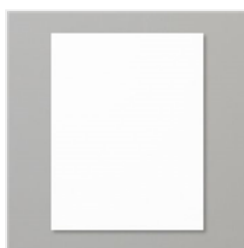
Multipurpose  
Liquid Glue -  
110755

Price: \$4.00



Stampin'  
Dimensionals -  
104430

Price: \$4.25



Basic White 8-1/2"  
X 11" Cardstock -  
159276

Price: \$10.25



Tuxedo Black  
Memento Ink Pad -  
132708

Price: \$6.00



Fluid 100  
Watercolor Paper -  
149612

Price: \$9.00



Stampin' Spritzer -  
126185

Price: \$3.25



Window Sheets -  
142314

Price: \$5.00



Crushed Curry  
Classic Stampin'  
Pad - 147087

Price: \$8.00



Basic Black 8-1/2"  
X 11" Cardstock -  
121045

Price: \$9.25



VersaMark Pad -  
102283

Price: \$9.50



# Queen Bee Bundle Meets the Smooching Technique!

Laura Milligan  
[laura@lauramilligan.com](mailto:laura@lauramilligan.com)  
[www.lauramilligan.com](http://www.lauramilligan.com)



Heat Tool - 129053

Price: \$30.00



Basics Embossing Powders - 155554

Price: \$18.00



Stamparatus - 146276

Price: \$49.00



Clear Block C - 118486

Price: \$7.50



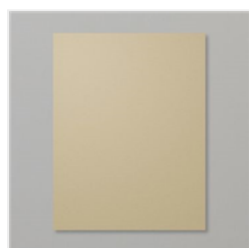
Soft Suede Classic Stampin' Pad - 147115

Price: \$8.00



Soft Suede 8-1/2" X 11" Cardstock - 115318

Price: \$9.25



Crumb Cake 8-1/2" X 11" Cardstock - 120953

Price: \$9.25



Adhesive Sheets - 152334

Price: \$11.00



Paper Trimmer - 152392

Price: \$25.00



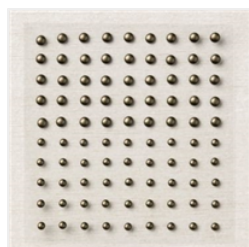
Paper Snips Scissors - 103579

Price: \$11.00



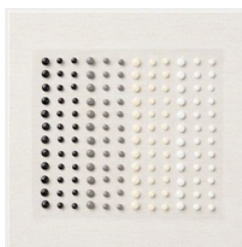
Embossing Additions Tool Kit - 159971

Price: \$27.00



Rustic Metallic Adhesive-Backed Dots - 159082

Price: \$8.00



Classic Matte Dots - 158146

Price: \$7.00

Add All to Cart