

Stamps n Stuff



Instructions:

Cherry Cobbler: 5 inch hexagon x 2 On one of the hexagons score top at 1/4 inch and apply tear and tape. Affix the 2 hexagons together. This will complete your card base

Whisper White:

- 4 1/2 inch hexagon x 2 One will be for the front face. With blending brush/spong dauber and Petal Pink inkpad, blend the cheeks onto the face at the sides. The second white hexagon is for the inside and decorated as shown.
- 1 x 5 inch scrap piece. Pundh edges with corner rounder. Emboss with Parisian Flourish embossing folder. This is Santa's hat brim.
- 3 flower punches that are concentric. Largest flower is approx 1 1/4 inch. This will be the pom pom on Santa's hat.
- Eyebrows are a 1 1/4 scallop circle punch cut in 1/2 and edged with Gray Granite.
- Eyelids are 3/4 inch circle punch cut in 1/2 and edged with Gray Granite
- White of eye is 3/4 inch circle punch x 2

Paper Pieced Santa

Technique Tuesday # 70

Debbie O'Neil
(928) 706-7603

deboneilstampsnstuff@gmail.com

<https://stampsnstuff.org>

- nose is 1/2 inch circle punch edged with Gray Granite
- Mustache is same 1 1/4 scallop circle punch cut in 1/2 and shaped as mustache. Edge with Gray Granite
- beard is any doily die or Snowflakes glued on to make beard. For years we used snowflake dies and then we changed to a doiley die. This is your choice. See the video as I will show what the snowflakes look like.....too cute!

Basic Black Cardstock:

- pupils are 1/2 inch circle punch x 2 put coma marks in eyes for reflection with chalk marker.
- 1/2 inch strip for belt inside
- 1/2" square for top of buckle

Gold Cardstock: 5/8 square for buckle

Pacific Point Cardstock: Iris 5/8 inch circle punch x 2

Red Velvet Paper: using the cherry cobbler hexagon as template trace top of hat down 1 1/4 inch. This is for Santa's hat. Fashion a triangle that is 5" long on base and 1 1/2 inch high for the portion of the hat that falls over the front. Secure your 3 concentric flowers to the tip as shown for the pom pom.

Stamp HO HO HO Merry Christmas to inside and santa hat to envelope. Stampin' Up! Set "Little Treats"

enjoy!

Paper Pieced Santa

Technique Tuesday # 70

Debbie O'Neil
(928) 706-7603
deboneilstampsnstuff@gmail.com
<https://stampsnstuff.org>



[Stamp Set Cling Little Treats - 153376](#)

Price: \$21.00



[Cherry Cobbler Classic Stampin' Pad - 147083](#)

Price: \$7.50



[Petal Pink Classic Stampin' Pad - 147108](#)

Price: \$7.50



[Gray Granite Classic Stampin' Pad - 147118](#)

Price: \$7.50



[Red Velvet Paper - 153490](#)

Price: \$6.00



[Gold Foil Sheets - 132622](#)

Price: \$5.00



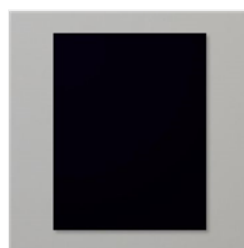
[Cherry Cobbler 8-1/2" X 11" Cardstock - 119685](#)

Price: \$8.75



[Whisper White 12" X 12" \(30.5 X 30.5 Cm\) Cardstock - 124302](#)

Price: \$7.75



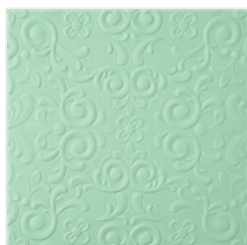
[Basic Black 8-1/2" X 11" Cardstock - 121045](#)

Price: \$8.75



[Balmy Blue 8-1/2" X 11" Cardstock - 146982](#)

Price: \$8.75



[Parisian Flourish 3D Embossing Folder - 151474](#)

Price: \$10.00



[Multipurpose Liquid Glue - 110755](#)

Price: \$4.00



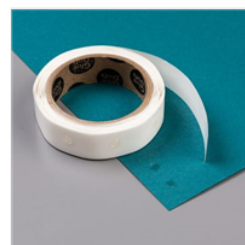
[Stampin' Dimensionals - 104430](#)

Price: \$4.00



[Mini Stampin' Dimensionals - 144108](#)

Price: \$4.00



[Glue Dots - 103683](#)

Price: \$5.25

Paper Pieced Santa

Technique Tuesday # 70

Debbie O'Neil
(928) 706-7603
deboneilstampsnstuff@gmail.com
<https://stampsnstuff.org>



[Take Your Pick -
144107](#)

Price: \$10.00



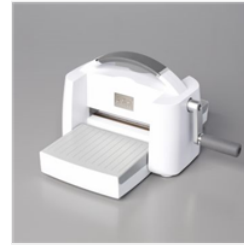
[Paper Snips
Scissors - 103579](#)

Price: \$10.00



[Paper Trimmer -
152392](#)

Price: \$25.00



[Stampin' Cut &
Emboss Machine -
149653](#)

Price: \$120.00



[Sponge Daubers -
133773](#)

Price: \$5.00



[White Stampin'
Chalk Marker -
132133](#)

Price: \$3.50

Add All to Cart