

Irresistible Blooms + Dry Brushed Metallic

Card Measurements, Directions & Supply List

Lisa Goodell
559-860-8155

LISA@LISAGOODPELL.COM
<https://lisagoodell.stampinup.net>

****MEASUREMENTS:

The white card base is 9 1/2 x 5 1/2 inches. Score at 1 1/2 and 5 1/2 inches. Fold both flaps in to make sure the card will lie flat when folded. (Mine didn't, so I trimmed the bottom flap just a tiny bit.)

DSP paper size on the top flap (both outside and inside) is 1 1/4 x 5 1/4 inches.

DSP paper size on the outside bottom flap is 3 3/4 x 5 1/2 inches.

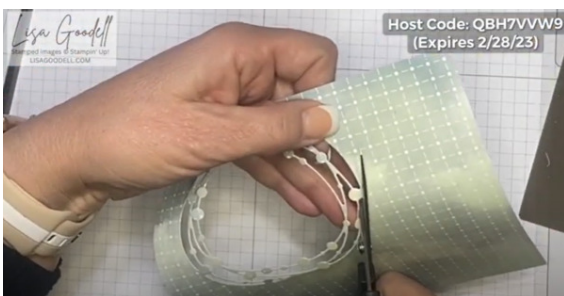
DSP paper size on the inside bottom is 3/4 x 5 1/4 inches.

The front white circle die has a diameter of 3 inches and is from Stylish shapes dies.

DSP paper circle has a diameter of 2 1/2 inches and is from Stylish shapes dies.

****DIRECTIONS:

Use Mini Emboss and Cut machine to cut the two largest circles dies from Stylish Shapes dies. Cut the largest one on white. Cut the smaller one on the DSP paper.



Use the die from Hello, Irresistible that has circular lines with balls on them. After cutting the die,

Irresistible Blooms + Dry Brushed Metallic

Card Measurements, Directions & Supply List

Lisa Goodell

559-860-8155

LISA@LISAGOODSELL.COM

<https://lisagoodell.stampinup.net>

you will need to use scissors to cut about a few of the balls to separate it from the rest of the paper. Next, take this same die you cut, and emboss it with clear embossing powder. I put the paper die on scratch paper, then used Versamark pad to ink directly on the paper. Then move the paper die to another piece of scratch paper and pour the clear embossing powder over it. I used the edge of a paintbrush (you could use the edge of the bone folder) to spread the powder to cover it all. Remove the die and shake off excess powder. Move extra powder out of the way before using the heat tool to emboss it. Set it aside.

Take the DSP smaller circle you cut and stamp the big bloom from Irresistible Blooms and leaves on it with Versamark ink. Then emboss with white embossing powder.

Wait a minute for everything to cool from being embossed. Glue the DSP circle with embossed flower) on the white circle. Then glue the piece with circular lines with balls on the very top. Set aside.

Next, get the card base and DSP papers and cut as described in the measurements section. Adhere the DSP papers to the front top flap, bottom flap, inside top flap, and the strip at the bottom.

Finally adhere the circle to the center of the top flap. Remember to only put glue (or SEAL tape) on the top part of the circle that will touch the flap.



Irresistible Blooms + Dry Brushed Metallic

Card Measurements, Directions & Supply List

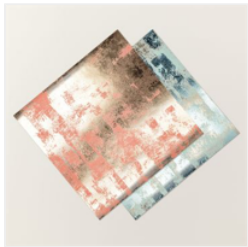
Lisa Goodell

559-860-8155

LISA@LISAGOODELL.COM

<https://lisagoodell.stampinup.net>

****SUPPLIES I used are listed below. Please note the Irresistible Blooms Bundle (stamp set and dies) and Hello, Irresistible DSP will not be available until 3/1/2023, so they are not listed below.



Dry Brushed Metallic 12" X 12" (30.5 X 30.5 Cm) Specialty Designer Series Paper - 160837
Price: \$8.00



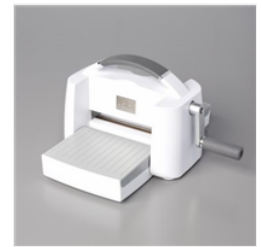
Hello, Irresistible 6" X 6" (15.2 X 15.2 Cm) Designer Series Paper - 161139
Price: \$12.50



Basic White 8-1/2" X 11" Thick Cardstock - 159229
Price: \$8.75



Irresistible Blooms Bundle (English) - 161150
Price: \$54.00



Stampin' Cut & Emboss Machine - 149653
Price: \$125.00



Bone Folder - 102300
Price: \$7.00



Take Your Pick - 144107
Price: \$10.00



Multipurpose Liquid Glue - 110755
Price: \$4.00



Grid Paper - 130148
Price: \$12.50



Paper Trimmer - 152392
Price: \$25.00



Silicone Craft Sheet - 127853
Price: \$6.50



Paper Snips Scissors - 103579
Price: \$11.00



Mini Stampin' Dimensionals - 144108
Price: \$4.25



Stampin' Dimensionals - 104430
Price: \$4.25



Embossing Additions Tool Kit - 159971
Price: \$27.00

Irresistible Blooms + Dry Brushed Metallic

Card Measurements, Directions & Supply List

Lisa Goodell
559-860-8155

LISA@LISAGODELL.COM
<https://lisagoodell.stampinup.net>

Add All to Cart