

A Spring-Themed Slimline Card

A Newsletter Subscriber Exclusive

Mary Fish

maryfish@stampinpretty.com

<http://stampinpretty.com>



measure & cut (from bottom to top):

slimline card base:

- Basic White Thick Cardstock: 8 1/2 x 7, scored at 3 1/2

layers (before die-cutting):

- Lovely & Beautiful Designer Series Paper - 8 1/2 x 3 1/2
- Old Olive Cardstock - 8 x 3
- White Willow Cardstock - 7 3/4 x 2 3/4
- Lovely & Beautiful Designer Series Paper - 2 x 2 1/2 (one each design)
- White Willow Cardstock (adhered to an Adhesive Sheet) - 12 x 2 1/4 (die-cut "HELLO" 3 times)
- White Willow Cardstock - 3 x 3/4 (sentiment)

A Spring-Themed Slimline Card

A Newsletter Subscriber Exclusive

Mary Fish

maryfish@stampinpretty.com

<http://stampinpretty.com>



stamp ([clear blocks](#) or [stamp positioning tool](#)):

- Stamp the sentiment (Woolly Friends) in Old Olive ink onto the sentiment layer.

crop, cut, assemble, adhere & embellish:

- Burnish the fold of the card base with a Bone Folder.
- Adhere the Designer Series Paper to the card base with Multipurpose Liquid Glue.
- Layer and adhere the White Willow and Old Olive cardstock together with Multipurpose Liquid Glue and to the card with Stampin' Dimensionals.
- Use a [Stampin' Cut & Emboss Machine](#) (Standard) to crop the banners and letters with the Party Banner & Alphabet À la Mode dies.
- Adhere the alphabet letters together (3 each for dimension) and to the banners as shown by removing the backing from the Adhesive Sheets.
- Tie a bow of white Baker's Twine and adhere as shown with a Mini Glue Dot.
- Crop the sentiment with the Three Banner Punch. Adhere with Stampin' Dimensionals.
- Embellish with Pearlized Faceted Circles.

learn more:

- Watch ALL my [1 Minute to WOW Video Tutorials](#) for quick paper crafting tips [here](#).

CLICK TO SHOP

A Spring-Themed Slimline Card

A Newsletter Subscriber Exclusive

Mary Fish
maryfish@stampinpretty.com
<http://stampinpretty.com>



[Woolly Friends Photopolymer Stamp Set \(English\) - 166881](#)

Price: \$19.00

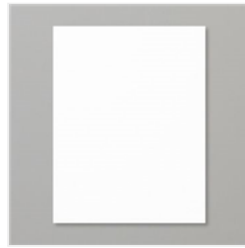
Add to Cart



[Lovely & Beautiful 12" X 12" \(30.5 X 30.5 Cm\) Specialty Paper - 166957](#)

Price: \$16.50

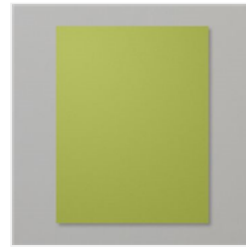
Add to Cart



[Basic White 8-1/2" X 11" Thick Cardstock - 159229](#)

Price: \$17.00

Add to Cart



[Old Olive 8-1/2" X 11" Cardstock - 100702](#)

Price: \$14.00

Add to Cart



[White Willow 12" X 12" \(30.5 X 30.5 Cm\) Cardstock - 166703](#)

Price: \$10.00

Add to Cart



[Old Olive Classic Stampin' Pad - 147090](#)

Price: \$9.00

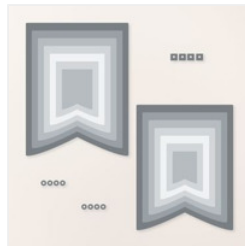
Add to Cart



[Alphabet À La Mode Dies - 160750](#)

Price: \$42.00

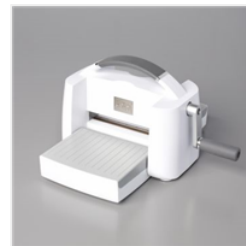
Add to Cart



[Party Banners Dies - 165264](#)

Price: \$40.00

Add to Cart



[Stampin' Cut & Emboss Machine - 149653](#)

Price: \$140.00

Add to Cart



[Three Banner Punch - 167050](#)

Price: \$26.00

Add to Cart



[Paper Trimmer - 152392](#)

Price: \$28.00

Add to Cart



[Mini Stampin' Dimensionals - 144108](#)

Price: \$4.25

Add to Cart



[Multipurpose Liquid Glue - 110755](#)

Price: \$6.00

Add to Cart



[Mini Glue Dots - 103683](#)

Price: \$7.25

Add to Cart



[Baker's Twine Essentials Pack - 155475](#)

Price: \$11.00

Add to Cart

A Spring-Themed Slimline Card

A Newsletter Subscriber Exclusive

Mary Fish
maryfish@stampinpretty.com
<http://stampinpretty.com>



[Pearlized Faceted
Circles - 166978](#)

Price: \$8.00

Add to Cart