

# A Simple Love Note Card

A Newsletter Subscriber Exclusive

Mary Fish

[maryfish@stampinpretty.com](mailto:maryfish@stampinpretty.com)

<http://stampinpretty.com>



**measure & cut (from bottom to top):**

**card base:**

- Basic White Note Card: 5 x 3 1/2

**layers (before die-cutting):**

- Basic White Cardstock: 4 x 2 1/2
- Basic White Cardstock: 3 x 1 1/2
- Lost Lagoon, Berry Burst, Gray Granite & Bubble Bath Cardstock: 3/4 x 1 1/2
- Basic White Cardstock: 4 x 1 1/2
- Berry Burst Cardstock: 1 x 1

**envelope flap:**

- Beautiful Bokeh Designer Series Paper: 5 1/8 x 2

# A Simple Love Note Card

A Newsletter Subscriber Exclusive

Mary Fish

[maryfish@stampinpretty.com](mailto:maryfish@stampinpretty.com)

<http://stampinpretty.com>



## stamp ([clear blocks](#) or [stamp positioning tool](#)):

- Stamp the sentiment (Hope Love & Joy Stamp Set) in Berry Burst Classic Ink onto the 4 x 1 1/2 piece of Basic White Cardstock.

## crop, cut, assemble, adhere & embellish:

- Burnish the fold of the card base with a Bone Folder.
- Adhere the 4 x 2 1/2 piece of Basic White Cardstock to the card base with Stampin' Dimensionals.
- Adhere the 4 colored strips of cardstock to the Basic White layer with Multipurpose Liquid Glue and to the card with Stampin' Dimensionals.
- Crop the sentiment with a [Stampin' Cut & Emboss Machine](#) (Standard or Mini) and the largest flagged banner Stylish Shapes die.
- Crop the heart with a [Stampin' Cut & Emboss Machine](#) (Standard or Mini) and the Hope Love & Joy die.
- Adhere the sentiment and heart as shown with Stampin' Dimensionals.
- Adhere a bow of white Baker's Twine below the heart as shown with a Mini Glue Dot.

## envelope:

- Adhere the 5 1/8 x 2 piece of Designer Series Paper to a Basic White Note Card envelope flap with Multipurpose Liquid Glue. **Tip:** Add glue to the flap, not the Designer Series Paper.

# A Simple Love Note Card

A Newsletter Subscriber Exclusive

Mary Fish

[maryfish@stampinpretty.com](mailto:maryfish@stampinpretty.com)

<http://stampinpretty.com>

## learn more:

- Watch ALL my [1 Minute to WOW Video Tutorials](#) for quick paper crafting tips [here](#).

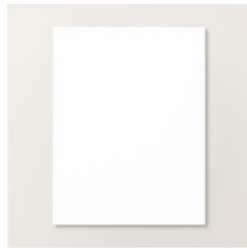
CLICK TO SHOP



[Basic White Note  
Cards & Envelopes  
- 159232](#)

Price: \$10.00

Add to Cart



[Basic White 8-1/2"  
X 11" Cardstock -  
166780](#)

Price: \$14.00

Add to Cart



[Lost Lagoon 8-1/2"  
X 11" Cardstock -  
133679](#)

Price: \$14.00

Add to Cart



[Berry Burst 8-1/2"  
X 11" Cardstock -  
144243](#)

Price: \$14.00

Add to Cart



[Gray Granite 8-  
1/2" X 11"  
Cardstock -  
146983](#)

Price: \$14.00

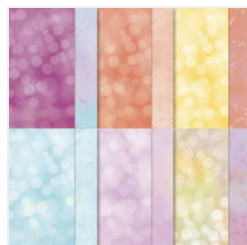
Add to Cart



[Bubble Bath 8-1/2"  
X 11" Cardstock -  
161718](#)

Price: \$14.00

Add to Cart



[Beautiful Bokeh 6"  
X 6" \(15.2 X 15.2  
Cm\) Designer  
Series Paper -  
164607](#)

Price: \$12.50

Add to Cart



[Berry Burst Classic  
Stampin' Pad -  
147143](#)

Price: \$9.00

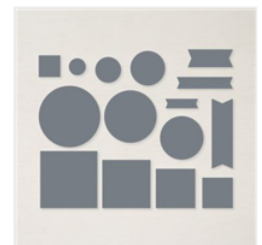
Add to Cart



[Clear Block D -  
118485](#)

Price: \$9.50

Add to Cart



[Stylish Shapes  
Dies - 159183](#)

Price: \$30.00

Add to Cart

# A Simple Love Note Card

A Newsletter Subscriber Exclusive

Mary Fish

[maryfish@stampinpretty.com](mailto:maryfish@stampinpretty.com)

<http://stampinpretty.com>



[Stampin' Cut & Emboss Machine - 149653](#)

Price: \$140.00

Add to Cart



[Mini Stampin' Cut & Emboss Machine - 150673](#)

Price: \$69.00

Add to Cart



[Paper Trimmer - 152392](#)

Price: \$28.00

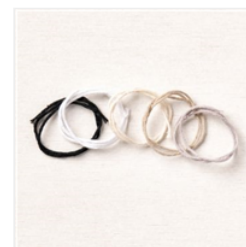
Add to Cart



[Multipurpose Liquid Glue - 110755](#)

Price: \$6.00

Add to Cart



[Baker's Twine Essentials Pack - 155475](#)

Price: \$11.00

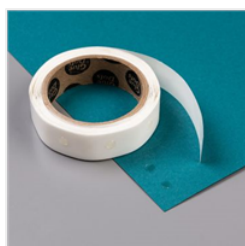
Add to Cart



[Stampin' Dimensionals - 104430](#)

Price: \$4.25

Add to Cart



[Mini Glue Dots - 103683](#)

Price: \$7.25

Add to Cart