

Step Into Layers of Beauty – A Card Inspired by Stampin' Up!

A Newsletter Subscriber Exclusive

Mary Fish

maryfish@stampinpretty.com

<http://stampinpretty.com>



measure & cut (from bottom to top):

card base:

- Basic White Thick Cardstock: 5 1/2 x 8 1/2, scored at 4 1/4

layers (from bottom to top):

- Basic White Cardstock: 5 1/2 x 4 1/4 (qty 2) (before die-cutting)
- Basic Black Cardstock: 3 x 3/8

Step Into Layers of Beauty – A Card Inspired by Stampin' Up!

A Newsletter Subscriber Exclusive

Mary Fish

maryfish@stampinpretty.com

<http://stampinpretty.com>



stamp:

- Use a Clear Block or Stamp Positioning Tool to stamp the floral image (Layers of Beauty Stamp Set) in Tuxedo Black Memento Ink onto the 2 Basic White layers.
- Stamp the sentiment in Versamark Ink onto the Basic Black layer after it has been rubbed with an Embossing Buddy. Cover with Basics WOW Embossing Powder. Set with a Heat Tool.

color:

- Use Blending Brushes and the Layers of Beauty Decorative Masks to add the following colors to one of the floral images. Petal Pink (roses), Crushed Curry (daisies), Lost Lagoon (leaves) and Early Espresso (daisy centers).

crop:

- Use a [Stampin' Cut & Emboss Machine](#) (Standard) to crop the two floral images with the coordinating Layers of Beauty Dies.
- Crop the center from the top of the card base using the 2nd largest (3 7/8 x 2 7/16) Sentimental Framing die.

assemble & adhere:

- Burnish the fold of the card base with a Bone Folder.
- Adhere the black and white stamped/cropped floral image to the inside of the card base as shown with Multipurpose Liquid Glue. Use snips or scissors to remove the excess floral pieces hanging over the edge of the base. (image 1)
- Adhere the colored floral image to the card front with Multipurpose Liquid Glue, lining it up with the image inside the card. (image 2)
- Trace and cut out the stenciled image as shown. Adhere so that the outside and inside images align and the colored image shows through. (image 3)
- Adhere the sentiment as shown with Mini Stampin' Dimensionals.

Step Into Layers of Beauty – A Card Inspired by Stampin' Up!

A Newsletter Subscriber Exclusive

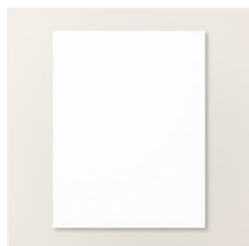
Mary Fish
maryfish@stampinpretty.com
<http://stampinpretty.com>



learn more:

- Watch ALL my [1 Minute to WOW Video Tutorials](#) for quick paper crafting tips [here](#).

CLICK TO SHOP



[Basic White 8-1/2" X 11" Cardstock - 166780](#)

Price: \$14.00

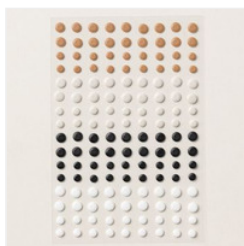
[Add to Cart](#)



[Basics Wow! Embossing Powder - 165679](#)

Price: \$21.00

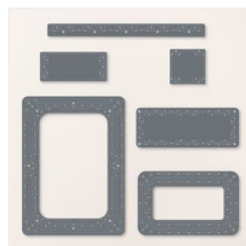
[Add to Cart](#)



[Neutral Matte Dots - 165561](#)

Price: \$8.00

[Add to Cart](#)



[Sentimental Framing Dies - 165476](#)

Price: \$38.00

[Add to Cart](#)



[Layers Of Beauty Bundle \(English\) - 163519](#)

Price: \$56.50

[Add to Cart](#)

Step Into Layers of Beauty – A Card Inspired by Stampin' Up!

A Newsletter Subscriber Exclusive

Mary Fish

maryfish@stampinpretty.com

<http://stampinpretty.com>



[Layers Of Beauty Dies - 163518](#)

Price: \$30.00

[Add to Cart](#)



[Layers Of Beauty Decorative Masks - 163517](#)

Price: \$15.00

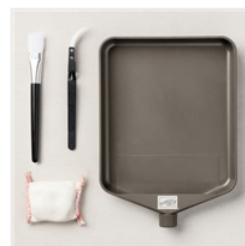
[Add to Cart](#)



[Layers Of Beauty Photopolymer Stamp Set \(English\) - 163514](#)

Price: \$20.00

[Add to Cart](#)



[Embossing Additions Tool Kit - 159971](#)

Price: \$27.00

[Add to Cart](#)



[Basic White 8-1/2" X 11" Thick Cardstock - 159229](#)

Price: \$17.00

[Add to Cart](#)



[Baker's Twine Essentials Pack - 155475](#)

Price: \$11.00

[Add to Cart](#)



[Blending Brushes - 153611](#)

Price: \$15.00

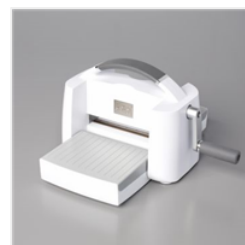
[Add to Cart](#)



[Paper Trimmer - 152392](#)

Price: \$28.00

[Add to Cart](#)



[Stampin' Cut & Emboss Machine - 149653](#)

Price: \$140.00

[Add to Cart](#)



[Mini Stampin' Dimensionals - 144108](#)

Price: \$4.25

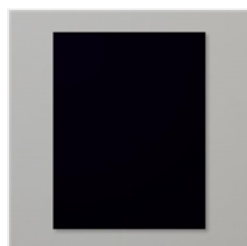
[Add to Cart](#)



[Heat Tool - 129053](#)

Price: \$32.00

[Add to Cart](#)



[Basic Black 8-1/2" X 11" Cardstock - 121045](#)

Price: \$14.00

[Add to Cart](#)



[Multipurpose Liquid Glue - 110755](#)

Price: \$6.00

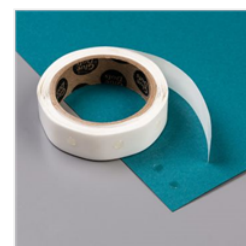
[Add to Cart](#)



[Stampin' Dimensionals - 104430](#)

Price: \$4.25

[Add to Cart](#)



[Mini Glue Dots - 103683](#)

Price: \$7.25

[Add to Cart](#)

Step Into Layers of Beauty – A Card Inspired by Stampin' Up!

A Newsletter Subscriber Exclusive

Mary Fish

maryfish@stampinpretty.com

<http://stampinpretty.com>



[Versamark Pad -
102283](#)

Price: \$9.50

Add to Cart