

A Pinwheel Quilt Card with a Nature Walk Designer Series Paper

A Newsletter Subscriber Exclusive

Mary Fish

maryfish@stampinpretty.com

<http://stampinpretty.com>



measure & cut (from bottom to top):

card base:

- Basic White Thick Cardstock: 5 x 10, scored at 5

layers (from bottom to top & before die-cutting):

- Nature Walk Designer Series Paper: 4 1/2 x 4 1/2
- Basic White Thick Cardstock: 4 3/16 x 4 3/16
- Basic White Thick Cardstock: 5 x 5 (for die-cutting)
- Nature Walk Designer Series Paper: 2 1/4 x 1 1/2 (of 4 designs)
- Basic White Cardstock: 2 x 1/2 (sentiment)

A Pinwheel Quilt Card with a Nature Walk Designer Series Paper

A Newsletter Subscriber Exclusive

Mary Fish

maryfish@stampinpretty.com

<http://stampinpretty.com>



stamp ([clear blocks](#) or [stamp positioning tool](#)):

- Stamp the sentiment (Nature's Symphony Stamp Set) in Secret Sea Classic Ink onto the piece of Basic White Cardstock.

crop, cut, assemble, adhere & embellish:

- Burnish the fold of the card base with a Bone Folder.
- Adhere the Designer Series Paper to the card base with Multipurpose Liquid Glue.
- Use a [Stampin' Cut & Emboss Machine](#) (Standard or Mini) to crop the Basic White Cardstock with the Stylish Shapes 1-1/16 square die (qty 16).
- Use a [Stampin' Cut & Emboss Machine](#) (Standard or Mini) to crop the Designer Series Paper with the Stylish Shapes 1-1/16 square die (qty 2 of each design).
- Adhere the Basic White squares to the 4 3/16 square of Basic White with Multipurpose Liquid Glue.
- Use a Paper Trimmer to cut each square of Designer Series Paper in half diagonally. Adhere to the Basic White squares as shown with Multipurpose Liquid Glue.
- Flag the right side of the sentiment with Paper Snips and punch a hole on the left side.
- Double wrap the quilt layer with White Baker's Twine, thread through the hole of the sentiment and secure with a bow. Adhere to the card with Stampin' Dimensionals.
- Embellish with Secret Sea Moody Palette Glossy Dots.

A Pinwheel Quilt Card with a Nature Walk Designer Series Paper

A Newsletter Subscriber Exclusive

Mary Fish
maryfish@stampinpretty.com
<http://stampinpretty.com>

learn more:

- Watch ALL my [1 Minute to WOW Video Tutorials](#) for quick paper crafting tips [here](#).

CLICK TO SHOP



[Secret Sea Classic Stampin' Pad - 165285](#)

Price: \$9.00

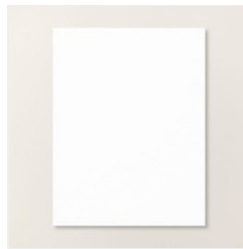
[Add to Cart](#)



[Basic White 8-1/2" X 11" Thick Cardstock - 159229](#)

Price: \$17.00

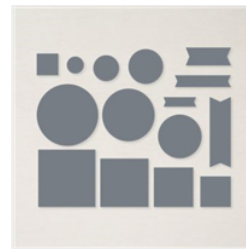
[Add to Cart](#)



[Basic White 8-1/2" X 11" Cardstock - 166780](#)

Price: \$14.00

[Add to Cart](#)



[Stylish Shapes Dies - 159183](#)

Price: \$30.00

[Add to Cart](#)



[Stampin' Cut & Emboss Machine - 149653](#)

Price: \$140.00

[Add to Cart](#)



[Mini Stampin' Cut & Emboss Machine - 150673](#)

Price: \$69.00

[Add to Cart](#)



[Paper Trimmer - 152392](#)

Price: \$28.00

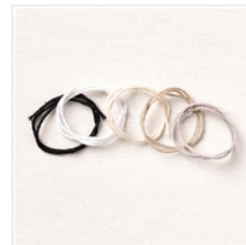
[Add to Cart](#)



[Multipurpose Liquid Glue - 110755](#)

Price: \$6.00

[Add to Cart](#)



[Baker's Twine Essentials Pack - 155475](#)

Price: \$11.00

[Add to Cart](#)



[Stampin' Dimensionals - 104430](#)

Price: \$4.25

[Add to Cart](#)