

A Hello, Friend Card with Delicate Designs!

A Newsletter Subscriber Exclusive

Mary Fish

maryfish@stampinpretty.com

<http://stampinpretty.com>


stampin' pretty
step-by-step tutorial



measure & cut (from bottom to top):

card base:

- Early Espresso Cardstock: 5 1/2 x 8 1/2, scored at 4 1/4 (folds on the side)

layers (before die-cutting):

- White Willow Cardstock: 3 1/4 x 4 1/2
- Earthen Toned Metallic Specialty Paper: 3 x 4 1/4
- Bloom Impressions Designer Series Paper strip: 2 3/4 x 4 (before cutting)
- White Willow Cardstock: 2 1/2 x 1 (sentiment)
- Earthen Toned Metallic Specialty Paper: scraps for flowers/sprig

A Hello, Friend Card with Delicate Designs!

A Newsletter Subscriber Exclusive

Mary Fish

maryfish@stampinpretty.com

<http://stampinpretty.com>



crop, cut, assemble, adhere & embellish:

- Stamp the sentiment (Delicate Whispers Stamp Set) in Early Espresso Classic Ink onto the White Willow Cardstock. Crop with the Three Banners Bunch.
- Use a [Stampin' Cut & Emboss Machine](#) to crop the Earthen Toned Metallic scraps with Delicate Whispers dies.
- Use a Paper Trimmer to cut the 2 3/4 x 4 piece of Designer Series Paper to the following keeping them in the same order:
 - 2 3/4 x 4: cut at 1 on the 2 3/4 side
 - 1 x 4: cut at 2 1/2 on the 4 side
 - 1 3/4 x 4: cut at 1 1/2 on the 4 side
- Assemble and adhere the four pieces of Designer Series Paper to the Earthen Toned Metallic layer as shown with Multipurpose Liquid Glue.
- Layer and adhere the panel to the White Willow layer with Multipurpose Liquid Glue and to the card with Stampin' Dimensionals.
- Adhere the flowers, leaves and bow of baker's twine to the sentiment as shown with Mini Glue Dots.
- Adhere the sentiment as shown with Mini Glue Dots.
- Embellish with Early Espresso Earthy Matte Dots.

learn more:

- Watch ALL my [1 Minute to WOW Video Tutorials](#) for quick paper crafting tips [here](#).

CLICK TO SHOP

A Hello, Friend Card with Delicate Designs!

Mary Fish

maryfish@stampinpretty.com

<http://stampinpretty.com>

A Newsletter Subscriber Exclusive



[Delicate Whispers Bundle \(English\) - 167506](#)

Price: \$48.50

[Add to Cart](#)



[Delicate Designs 12" X 12" \(30.5 X 30.5 Cm\) Specialty Designer Series Paper - 167509](#)

Price: \$11.00

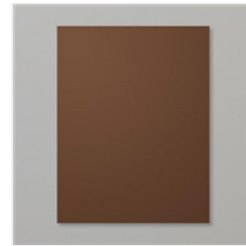
[Add to Cart](#)



[Earthen Toned Metallic 12" X 12" \(30.5 X 30.5 Cm\) Specialty Paper - 165901](#)

Price: \$7.50

[Add to Cart](#)



[Early Espresso 8-1/2" X 11" Cardstock - 119686](#)

Price: \$14.00

[Add to Cart](#)



[White Willow 12" X 12" \(30.5 X 30.5 Cm\) Cardstock - 166703](#)

Price: \$10.00

[Add to Cart](#)



[Early Espresso Classic Stampin' Pad - 147114](#)

Price: \$9.00

[Add to Cart](#)



[Three Banner Punch - 167050](#)

Price: \$26.00

[Add to Cart](#)



[Stampin' Cut & Emboss Machine - 149653](#)

Price: \$140.00

[Add to Cart](#)



[Paper Trimmer - 152392](#)

Price: \$28.00

[Add to Cart](#)



[Mini Stampin' Dimensionals - 144108](#)

Price: \$4.25

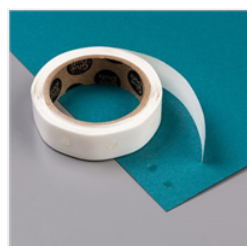
[Add to Cart](#)



[Multipurpose Liquid Glue - 110755](#)

Price: \$6.00

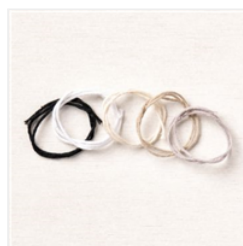
[Add to Cart](#)



[Mini Glue Dots - 103683](#)

Price: \$7.25

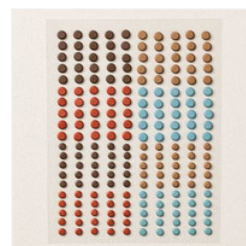
[Add to Cart](#)



[Baker's Twine Essentials Pack - 155475](#)

Price: \$11.00

[Add to Cart](#)



[Earthy Matte Dots - 167213](#)

Price: \$9.00

[Add to Cart](#)