

A Whimsical Holiday Card with Patterned Tags

A Newsletter Subscriber Exclusive

Mary Fish

maryfish@stampinpretty.com

<http://stampinpretty.com>



measure & cut (from bottom to top):

card base:

- Strawberry Slush Cardstock: 4 1/4 x 11, scored at 5 1/2

layers (from bottom to top & before die-cutting):

- Pool Party Cardstock: 4 x 5 1/4
- Basic White Cardstock: 3 3/4 x 5
- Granny Apple Green Cardstock: 2 1/2 x 3 3/4
- Pool Party Cardstock: 1 3/8 x 4 1/4
- Basic White Cardstock (circle): 3 x 3
- Basic White (tag & tab): 2 x 3 1/2
- Strawberry Slush, Granny Apple Green and Pool Party Cardstock (tag): 2 x 3 1/2 (one in every color)
- Basic White Cardstock: 2 1/2 x 2
- Pool Party Cardstock (bow): 2 1/4 x 2
- Strawberry Slush Cardstock adhered to a Foam Adhesive Sheet ("merry"): 2 3/4 x 1 1/2
- Granny Apple Green Cardstock (tree): 1 1/4 x 3 1/4
- Basic White Cardstock (sentiment): 3 x 3/4

A Whimsical Holiday Card with Patterned Tags

A Newsletter Subscriber Exclusive

Mary Fish

maryfish@stampinpretty.com

<http://stampinpretty.com>

envelope:

- Strawberry Slush 2025-2027 In Color Designer Series Paper: 5 3/4 x 2 1/4



stamp:

- Use a Clear Block C or Stamp Positioning Tool to stamp the sentiment (Words for the Season Stamp Set) in Strawberry Slush Classic Ink onto the Basic White sentiment layer.

crop:

- Crop the 2 1/2 x 2 piece of Basic White Cardstock with the 2 3/8 Circle Punch, at the 1/2 way point. (piece under the tree)
- Use a [Stampin' Cut & Emboss Machine](#) (Standard) to crop the following cardstock layers (from bottom to top, same as above):
 - Granny Apple Green: Festive Friends tag die
 - Basic White: Ornamental Christmas circle die
 - Basic White: Patterned Tags solid tag die & tab die
 - Strawberry Slush, Granny Apple Green, Pool Party: Patterned Tags striped tag die
 - Pool Party: Patterned Tags ribbon die
 - Strawberry Slush: Words for the Season "merry" die
 - Granny Apple Green: Festive Friends tree die
 - Stamped Sentiment: Words for the Season flagged label die

assemble & adhere:

- Burnish the fold of the card base with a Bone Folder.
- Adhere the Basic White and Pool Party layers together with Multipurpose Liquid Glue and to the card with Stampin' Dimensionals.
- Adhere the Pool Party strip to the Granny Apple Green die-cut as shown together with Multipurpose Liquid Glue and to the card with Stampin' Dimensionals.
- Adhere the Basic White die-cut circle as shown with Stampin' Dimensionals.
- Adhere the Strawberry Slush striped tag die-cut to the Basic White solid tag die-cut with Multipurpose Liquid Glue.

A Whimsical Holiday Card with Patterned Tags

Mary Fish

maryfish@stampinpretty.com

<http://stampinpretty.com>

A Newsletter Subscriber Exclusive

- Adhere the Granny Apple Green and Pool Party stripes from the tag die-cuts into the Strawberry Slush tag as shown with Multipurpose Liquid Glue.
- Adhere the Basic White tab die-cut to the top of the tag with Multipurpose Liquid Glue.
- Adhere the two Pool Party ribbon die-cuts together and to the tag with Multipurpose Liquid Glue.
- Adhere the 2 3/8 x 1 circle to the right side of the tag with Multipurpose Liquid Glue.
- Remove the protective backing from the Foam Adhesive Sheet and adhere the "Merry".
- Adhere the tree and sentiment die-cuts with Mini Stampin' Dimensionals.

embellish:

- Embellish with 4 Pool Party Dear Dots.

envelope flap:

- Adhere the 5 3/4 x 2 1/4 Designer Series Paper to a Basic White Medium envelope flap with Multipurpose Liquid Glue. TIP: Add glue to the flap, not the Designer Series Paper.

A Whimsical Holiday Card with Patterned Tags

A Newsletter Subscriber Exclusive

Mary Fish

maryfish@stampinpretty.com

<http://stampinpretty.com>

learn more:

- Watch ALL my [1 Minute to WOW Video Tutorials](#) for quick paper crafting tips [here](#).

CLICK TO SHOP



[Words For The Season Bundle \(English\) - 165798](#)

Price: \$49.50

Add to Cart



[Patterned Tags Dies - 165910](#)

Price: \$31.00

Add to Cart



[Festive Friends Bundle \(English\) - 166039](#)

Price: \$50.25

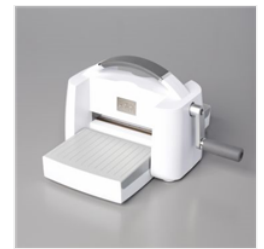
Add to Cart



[Ornamental Christmas Dies - 166000](#)

Price: \$33.00

Add to Cart



[Stampin' Cut & Emboss Machine - 149653](#)

Price: \$140.00

Add to Cart



[Paper Trimmer - 152392](#)

Price: \$28.00

Add to Cart



[Paper Snips Scissors - 103579](#)

Price: \$12.00

Add to Cart



[Stampin' Dimensionals - 104430](#)

Price: \$4.25

Add to Cart



[Multipurpose Liquid Glue - 110755](#)

Price: \$6.00

Add to Cart



[Foam Adhesive Sheets - 152815](#)

Price: \$8.25

Add to Cart

A Whimsical Holiday Card with Patterned Tags

A Newsletter Subscriber Exclusive

Mary Fish

maryfish@stampinpretty.com

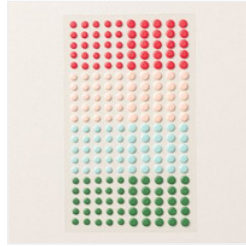
<http://stampinpretty.com>



[Basic White
Medium Envelopes
- 159236](#)

Price: \$11.00

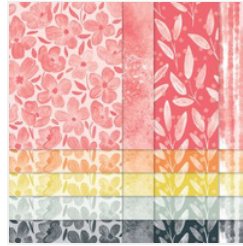
Add to Cart



[Dear Dots -
165848](#)

Price: \$8.50

Add to Cart



[2025-2027 In
Color™ 6" X 6"
\(15.2 X 15.2 Cm\)
Designer Series
Paper - 165300](#)

Price: \$12.50

Add to Cart



[Strawberry Slush
8-1/2" X 11"
Cardstock -
165625](#)

Price: \$14.00

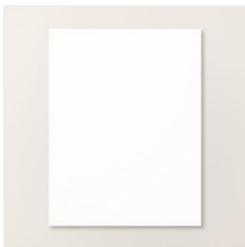
Add to Cart



[Pool Party 8-1/2" X
11" Cardstock -
122924](#)

Price: \$14.00

Add to Cart



[Basic White 8-1/2"
X 11" Cardstock -
166780](#)

Price: \$14.00

Add to Cart



[Granny Apple
Green 8-1/2" X 11"
Cardstock -
146990](#)

Price: \$14.00

Add to Cart



[Strawberry Slush
Classic Stampin'
Pad - 165286](#)

Price: \$9.00

Add to Cart



[Clear Block C -
118486](#)

Price: \$8.00

Add to Cart