

Create This Pretty in Pink Hugs Card

A Newsletter Subscriber Exclusive

Mary Fish

maryfish@stampinpretty.com

<http://stampinpretty.com>


stampin' pretty
step-by-step tutorial



measure & cut (from bottom to top):

card base:

- Basic Black Cardstock: 5 1/2 x 8 1/2, scored at 4 1/4 (top)

layers (before die-cutting):

- Basic White Cardstock: 5 3/8 x 2 1/2
- Strawberry Slush Cardstock: 5 3/8 x 2 3/8
- Basic White Cardstock: 5 3/8 x 2
- Artisan Sketched Designer Series Paper: 5 3/8 x 1 7/8
- Strawberry Slush Cardstock: 3 x 3 square
- Basic White Cardstock: 2 1/2 x 2 1/2 square
- Basic Black Two-Tone Cardstock: 1 1/8 x 1/2

envelope flap:

- Artisan Sketched Designer Series Paper: 5 3/4 x 2 1/4

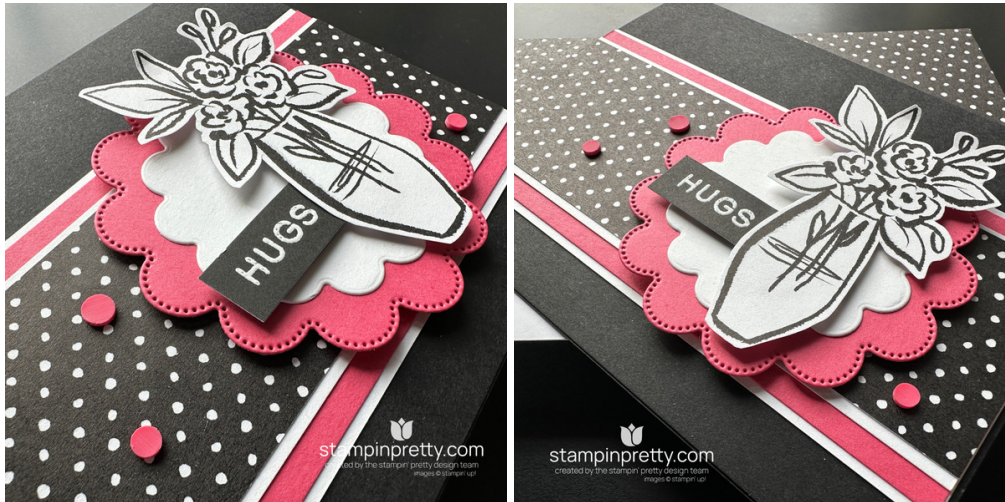
Create This Pretty in Pink Hugs Card

A Newsletter Subscriber Exclusive

Mary Fish

maryfish@stampinpretty.com

<http://stampinpretty.com>



stamp ([clear blocks](#) or [stamp positioning tool](#)):

- Stamp the sentiment (Scalloped Blooms Stamp Set) in Versamark Ink onto the Basic Black Two-Tone Cardstock that has been rubbed with an Embossing Buddy (part of the [Embossing Additions Tool Kit](#)). Cover with Basics WOW White Embossing Powder. Tap to remove the excess and set with a Heat Tool.

crop, cut, assemble, adhere & embellish:

- Burnish the fold of the card base with a Bone Folder.
- Layer and adhere the Basic White, Strawberry Slush and Designer Series Paper together and to the card with Multipurpose Liquid Glue as shown.
- Crop the Strawberry Slush Cardstock with a [Stampin' Cut & Emboss Machine](#) (Standard or Mini) and the 2 7/8 Scalloped Blooms die. Adhere as shown with Stampin' Dimensionals.
- Crop the Basic White Cardstock with the 2 1/8 Scalloped Blooms die. Adhere with Multipurpose Liquid Glue.
- Snip the vase from the Designer Series Paper. Adhere with the sentiment as shown with Stampin' Dimensionals.
- Embellish with Strawberry Dots.

envelope:

- Adhere the 5 3/4 x 2 1/4 Designer Series Paper to a Basic White Medium envelope flap with Stampin' Seal. **Tip:** Add glue to the flap, not the Designer Series Paper.

learn more:

- Watch ALL my [1 Minute to WOW Video Tutorials](#) for quick paper crafting tips [here](#).

CLICK TO SHOP

Create This Pretty in Pink Hugs Card

Mary Fish

maryfish@stampinpretty.com

<http://stampinpretty.com>

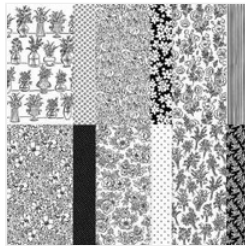
A Newsletter Subscriber Exclusive



[Scalloped Blooms Bundle \(English\) - 167647](#)

Price: \$53.00

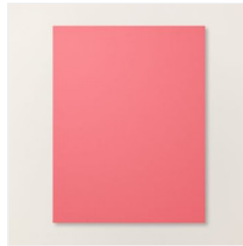
[Add to Cart](#)



[Artisan Sketched Garden 12" X 12" \(30.5 X 30.5 Cm\) Designer Series Paper - 167752](#)

Price: \$13.00

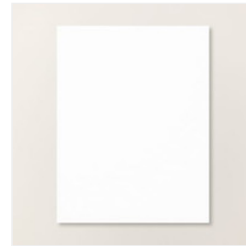
[Add to Cart](#)



[Strawberry Slush 8-1/2" X 11" Cardstock - 165625](#)

Price: \$14.00

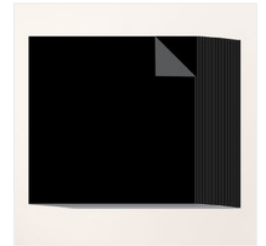
[Add to Cart](#)



[Basic White 8-1/2" X 11" Cardstock - 166780](#)

Price: \$14.00

[Add to Cart](#)



[Basic Black 12" X 12" \(30.5 X 30.5 Cm\) Two-Tone Cardstock - 166704](#)

Price: \$10.00

[Add to Cart](#)



[Stampin' Positioner - 167768](#)

Price: \$49.00

[Add to Cart](#)



[Paper Trimmer - 152392](#)

Price: \$28.00

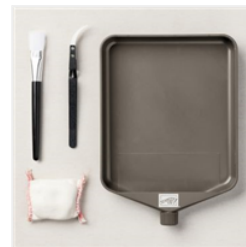
[Add to Cart](#)



[Basics Wow! Embossing Powder - 165679](#)

Price: \$21.00

[Add to Cart](#)



[Embossing Additions Tool Kit - 159971](#)

Price: \$27.00

[Add to Cart](#)



[Heat Tool - 129053](#)

Price: \$34.00

[Add to Cart](#)



[Versamark Pad - 102283](#)

Price: \$9.50

[Add to Cart](#)



[Multipurpose Liquid Glue - 110755](#)

Price: \$6.50

[Add to Cart](#)



[Stampin' Dimensionals - 104430](#)

Price: \$5.00

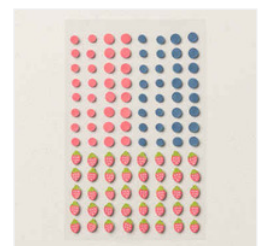
[Add to Cart](#)



[Basic White Medium Envelopes - 159236](#)

Price: \$15.00

[Add to Cart](#)



[Strawberries & Dots - 167479](#)

Price: \$9.00

[Add to Cart](#)

Create This Pretty in Pink Hugs Card

A Newsletter Subscriber Exclusive

Mary Fish

maryfish@stampinpretty.com

<http://stampinpretty.com>



[Stampin' Cut & Emboss Machine - 149653](#)

Price: \$140.00

[Add to Cart](#)



[Mini Stampin' Cut & Emboss Machine - 150673](#)

Price: \$69.00

[Add to Cart](#)