

A Thanks Card with Regency Park Suite!

Mary Fish
stampinpretty@gmail.com
<http://stampinpretty.com>



CUT YOUR CARD STOCK - DIMENSIONS:

- Basic White Thick Card Stock:
Card Base – 4 1/4 x 9. Scored at 5 1/2
- Shaded Spruce Card Stock:
Layers - 3 1/4 x 4 (left), 1 3/4 x 4 (right)
Die-cut Layer - 4 x 1 1/2 (before cropping)
- Regency Park Designer Series Paper:
Layers - 3 x 3 3/4 (left), 1 1/2 x 3 3/4 (right)
Envelope Flap - 5 3/4 x 2 1/4
- Night of Navy Card Stock:
Die-Cut Flower - 1 1/4 x 1 1/4 or scrap (before cropping)
- Basic White Card Stock:
Stamped Die-Cut Layer - 3 1/4 x 2 (before cropping)
Die-cut Flower - 1 1/4 x 1 1/4 or scrap

A Thanks Card with Regency Park Suite!

Mary Fish
stampinpretty@gmail.com
<http://stampinpretty.com>



1. Burnish the score line of the card base with a Bone Folder.
2. Adhere the Designer Series Paper and Shaded Spruce Card Stock layers together (left and right sides) and to the card base as shown with Stampin' Seal.
3. Crop the Basic White sentiment layer with a [Stampin' Cut & Emboss Machine](#) (Standard or Mini) and the coordinating Sentimental Park die.
4. Use a [Stamparatus](#) to position and stamp the sentiments in Night of Navy Classic Inks onto the die-cut as shown.
5. Adhere to the left side to card with Stampin' Dimensionals.
6. Use a [Stampin' Cut & Emboss Machine](#) (Standard or Mini) and the coordinating Sentimental Park dies to crop the stem (Shaded Spruce), flower petal base (Basic White) and flower petal detail (Night of Navy).
7. Adhere together and to the card as shown with Multipurpose Liquid Glue.
8. Tie a bow of white Baker's Twine Essentials. Secure in place with a Mini Glue Dot.
9. **POP OF PERSONALITY!** Embellish with Mango Melody Adhesive-Backed Milky Dots.
10. **PERFECT POLISH!** Use Multipurpose Liquid Glue to adhere the Designer Series Paper to the outside flap of a Basic White Medium Envelope. You can see my video demonstration with tips on adding designer paper to an envelope flap [here](#).

A Thanks Card with Regency Park Suite!

Mary Fish
stampinpretty@gmail.com
<http://stampinpretty.com>

Mary Fish
Independent
Stampin' UP! Demonstrator

click for blog post

click to shop

A Thanks Card with Regency Park Suite!

Mary Fish
stampinpretty@gmail.com
<http://stampinpretty.com>



Paper Trimmer -
152392

Price: \$25.00

Add to Cart



Stampin' Cut &
Emboss Machine -
149653

Price: \$125.00

Add to Cart



Bone Folder -
102300

Price: \$7.00

Add to Cart



Stamparatus -
146276

Price: \$49.00

Add to Cart



Stampin'
Dimensionals -
104430

Price: \$4.25

Add to Cart



Night Of Navy
Classic Stampin'
Pad - 147110

Price: \$8.00

Add to Cart



Basic White 8-1/2"
X 11" Thick
Cardstock -
159229

Price: \$8.75

Add to Cart



Basic White 8-1/2"
X 11" Cardstock -
159276

Price: \$10.25

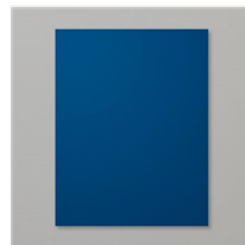
Add to Cart



Shaded Spruce 8-
1/2" X 11"
Cardstock -
146981

Price: \$9.25

Add to Cart



Night Of Navy 8-
1/2" X 11"
Cardstock -
100867

Price: \$9.25

Add to Cart



Basic White
Medium Envelopes
- 159236

Price: \$7.50

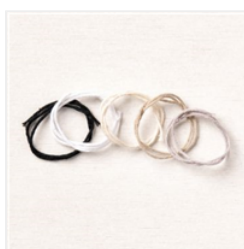
Add to Cart



Multipurpose
Liquid Glue -
110755

Price: \$4.00

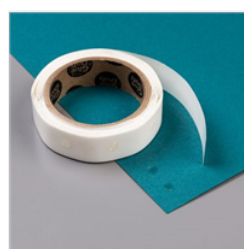
Add to Cart



Baker's Twine
Essentials Pack -
155475

Price: \$11.00

Add to Cart



Mini Glue Dots -
103683

Price: \$5.25

Add to Cart