

Hearts of Elegance Heart Shaped Card

Jennifer Roque

2405785644

stampcampwithjen@gmail.com

stampcampwithjen.com



[Click Here](#) for YouTube Video

[Click Here](#) for Blog Post

This card using the following pre-order products that will be available for purchase from the Online Exclusives on November 5, 2024.

- **Hearts of Elegance Bundle** - Item# 164916 - \$50.25
- **Hearts of Elegance Stamp Set** - Item# 164909 - \$20.00
- **Hearts of Elegance Dies** - Item# 164915 - \$36.00
- **Marbled Elegance 12" x 12" Specialty Designer Series Paper** - Item# 164919 - \$16.50

Hearts of Elegance Heart Shaped Card

Jennifer Roque

2405785644

stampcampwithjen@gmail.com

stampcampwithjen.com

Measurements:

- Basic White: 1" x 3-1/2"

Instructions:

1. Die cut 2 Melon Mambo hearts using the largest heart die from the Hearts of Elegance Dies.
2. Score 1 of the Melon Mambo hearts at 1/4" from the top edge.
3. Glue the two hearts together using Multipurpose Liquid Glue.
4. Die cut a heart out of the Marbled Elegance 12" x 12" Specialty Designer Series Paper using the largest heart die from the Hearts of Elegance Dies.
5. Glue the marbled heart die cut on to the front of the Melon Mambo heart card base.
6. Stamp "Sending Lots of Love" from the Hearts of Elegance Stamp Set in Tuxedo Black Memento Ink on to a piece of 1" x 3-1/4" Basic White.
7. Use your Paper Snips Scissors or Banners Pick A Punch (retired) to make a banner end on the right side of the sentiment strip then glue the sentiment strip to the front left edge of the card as shown.
8. Die cut a piece of Gold Foil Sheets using the largest heart die from the Hearts of Elegance Dies.
9. Die cut the center of the gold heart using the heart with the bordered stitching to make a gold heart frame, glue the gold heart frame over the marbled heart.
10. Stamp the flower from the Hearts of Elegance Stamp Set in Pretty In Pink Ink and the leaves from the Hearts of Elegance Stamp Set in Old Olive Ink then die cut with the coordinating dies from the Hearts of Elegance Dies.
11. Glue the flower and leaves on to the card front as shown.
12. Die cut a basic white heart using the heart with the bordered stitching from the Hearts of Elegance Dies.

Hearts of Elegance Heart Shaped Card

Jennifer Roque
2405785644

stampcampwithjen@gmail.com
stampcampwithjen.com

13. Glue the Basic White heart in the center of the card to write your message and your card is ready for gifting!



Hearts of Elegance Heart Shaped Card

Jennifer Roque
2405785644

stampcampwithjen@gmail.com
stampcampwithjen.com



[Paper Trimmer -
152392](#)

Price: \$28.00

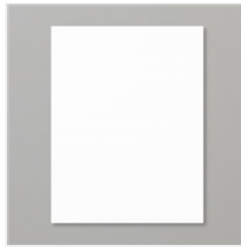
Add to Cart



[Banners Pick A
Punch - 153608](#)

Price: \$27.00

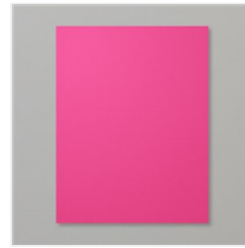
Add to Cart



[Basic White 8-1/2"
X 11" Cardstock -
159276](#)

Price: \$13.00

Add to Cart



[Melon Mambo 8-
1/2" X 11"
Cardstock -
115320](#)

Price: \$11.50

Add to Cart



[Gold Foil Sheets -
132622](#)

Price: \$5.00

Add to Cart



[Old Olive Classic
Stampin' Pad -
147090](#)

Price: \$9.00

Add to Cart



[Pretty In Pink
Classic Stampin'
Pad - 163807](#)

Price: \$9.00

Add to Cart



[Tuxedo Black
Memento Ink Pad -
132708](#)

Price: \$8.00

Add to Cart



[Paper Snips
Scissors - 103579](#)

Price: \$12.00

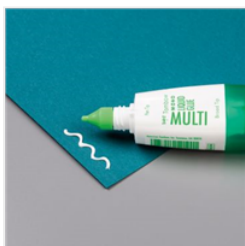
Add to Cart



[Bone Folder -
102300](#)

Price: \$8.00

Add to Cart



[Multipurpose
Liquid Glue -
110755](#)

Price: \$6.00

Add to Cart