

Flowers of Friendship True Love Double Dutch Fun Fold Card

Jennifer Roque
2405785644

stampcampwithjen@gmail.com
stampcampwithjen.com



[Click here](#) to watch my YouTube video tutorial.

This project is a **CASE (Copy And Share Everything)** of a Ronda Wade card. You can watch her Facebook demonstration [here](#).

Flowers of Friendship True Love Double Dutch Fun Fold Card

Jennifer Roque
2405785644

stampcampwithjen@gmail.com
stampcampwithjen.com

Measurements:

- Basic Black:
 - card base: 4-1/4" x 5-1/2"
 - belly band: 1" x 11"
- True Love DSP:
 - 4" x 5-1/4"
 - 2-1/2" x 3-5/8"
 - 1-1/2" x 4-1/4" - 2 pieces
- Stitched So Sweetly Dies: 3 largest scalloped frames - biggest and smallest are in Basic Black, middle size is in Basic White.

Instructions:

1. Adhere the 4" x 5-1/4" True Love DSP layer to the Basic Black card base using Stampin' Seal.
2. Apply Stampin' Seal to the center of the Basic Black belly band strip and adhere the Basic Black card base lining up the bottom edges with each other.
3. Fold over the belly band so that it wraps around the front.
4. Adhere Stampin' Seal to the center of the belly band and adhere the Basic Black card base to it.
5. Adhere the white scalloped frame to the center of the card base.
6. Lay down one of the DSP strips over the bottom center of the card base, adhere Stampin' Seal to the right side of the belly band and adhere the belly band to the DSP strip. Repeat on the left side.
7. Adhere the smaller DSP panel to the large Basic Black scalloped frame.
8. Center the large Basic Black scalloped frame over the where the white scalloped frame is and adhere to the front of the right arm of the belly band.
9. Stamp and heat emboss the sentiment and flowers from the Flowers of Friendship Stamp Set in White Stampin' Emboss Powder on to the smallest Basic Black scalloped frame and set with your Heat Tool.

Flowers of Friendship True Love Double Dutch Fun Fold Card

Jennifer Roque
2405785644

stampcampwithjen@gmail.com
stampcampwithjen.com

10. Center the scalloped frame over the large Basic Black scalloped frame and adhere to the top of the left arm of the belly band.

11. Add Rhinestone Basic Jewels to the centers of your flowers if desired and your card is done!

Did you know that there are a variety of combinations you can make with the Flowers & Leaves punch? See the picture below to see all the ways to make flowers with this versatile punch!



Flowers of Friendship True Love Double Dutch Fun Fold Card

Jennifer Roque
2405785644

stampcampwithjen@gmail.com
stampcampwithjen.com



[Flowers Of Friendship Bundle \(English\) - 155590](#)

Price: \$35.00



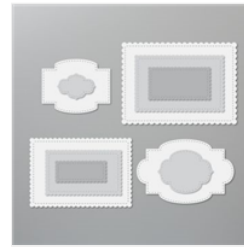
[Flowers Of Friendship Cling Stamp Set - 155358](#)

Price: \$21.00



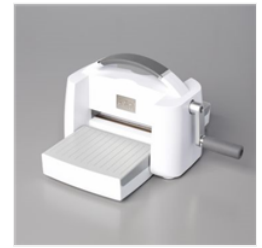
[Flowers & Leaves Punch - 155373](#)

Price: \$18.00



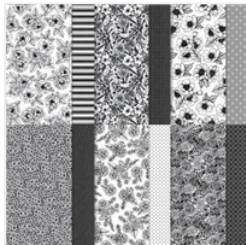
[Stitched So Sweetly Dies - 151690](#)

Price: \$32.00



[Stampin' Cut & Emboss Machine - 149653](#)

Price: \$120.00



[True Love Designer Series Paper - 154281](#)

Price: \$11.50



[Basic Black 8-1/2" X 11" Cardstock - 121045](#)

Price: \$8.75



[Basic White 8-1/2" X 11" Cardstock - 159276](#)

Price: \$9.75



[Versamark Pad - 102283](#)

Price: \$9.50



[Basics Embossing Powders - 155554](#)

Price: \$18.00



[Heat Tool - 129053](#)

Price: \$30.00



[Rhinestone Basic Jewels - 144220](#)

Price: \$5.00



[Take Your Pick - 144107](#)

Price: \$10.00



[Stampin' Seal - 152813](#)

Price: \$8.00

Add All to Cart