

September 2015 • Volume 14

Number 6 • Issue 162 • \$2.50

Vermont's Northland Journal

Memories and Stories from Vermont's Northeast Kingdom and Beyond

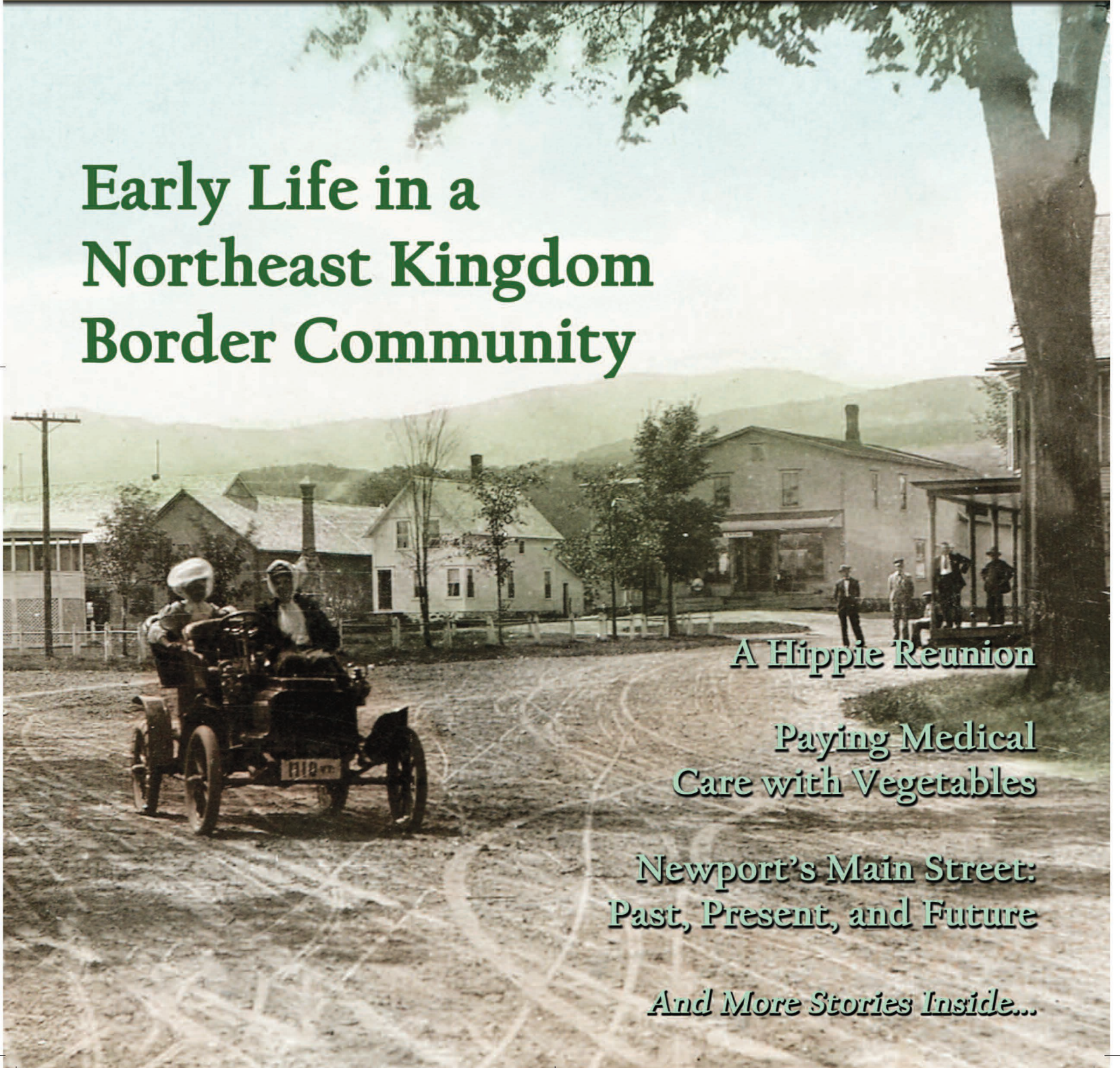
Early Life in a Northeast Kingdom Border Community

A Hippie Reunion

*Paying Medical
Care with Vegetables*

*Newport's Main Street:
Past, Present, and Future*

And More Stories Inside...



Vermont's Northland Journal

September 2015 • Volume 14 • Number 6 • Issue 162

Published monthly

Publishers:	Scott and Penny Wheeler
Office Manager:	Emily (Wheeler) Brugman
Copy Editor:	Jeannine B. Young The Little House Desktop Publishing
Production:	Theresa Perron-Janowski Perron Graphics
Cover design:	Thomas Lichtenberger Designs
Mailing Address:	Vermont's Northland Journal P.O. Box 812, Derby, VT 05829
Phone:	802.334.5920
Email:	northlandjournal@gmail.com
Website:	www.northlandjournal.com
Web Developer:	Bill Alexander www.alpinewebmedia.com
Subscriptions:	Annually: \$25; 2 years: \$45, in the U.S. Prices include shipping and handling. Issues are mailed in envelopes. Allow 4-6 weeks for delivery of first issue.
Back Issues:	Back issues available on a limited basis. The cost is \$3, plus \$2 per issue for shipping & handling.
Advertising & Questions	Scott Wheeler at 802.334.5920 email: northlandjournal@gmail.com

Mission Statement:

The purpose of *Vermont's Northland Journal* is to preserve and share the history of Vermont's North Country in a nonpartisan manner. The publication also serves as a forum for groups dedicated to preserving the history of the region.

While this publication does not have a Letters to the Editor page, we do provide space for people to share their own historical memories.

The publisher will review any submission, and reserves the right to accept, reject, or edit any material. No responsibility is assumed by *Vermont's Northland Journal*, its publisher, editor, or staff, for loss or damage to materials submitted. Return postage must accompany all manuscripts, drawings, photographs, etc., if they are to be returned.

Copyright 2015 *Vermont's Northland Journal*.
All rights reserved. Printed by Blanchard Litho
of Sherbrooke, Quebec, Canada.

No part of *Vermont's Northland Journal* may be reproduced without the written permission of the publisher.

Attention, Subscribers:

If you should have an address change—permanent or temporary—please contact the *Northland Journal* with your new address as the *Journal* is mailed at a class that the U.S. Postal Service doesn't forward. This will help ensure uninterrupted mail delivery, and will prevent you from having to purchase issues that were not forwarded to you. Direct all questions to the Publishers, Scott and Penny Wheeler, at 802.334.5920.

In This Issue

- Publisher's Desk 3
- Dr. Butterfield: Caring for Patients for a Bag of Vegetables
or a Load of Firewood 6
- A History of Troy, Vermont 11
- North Troy: Life in a Northeast Kingdom
Border Community 15
- Dr. Frank Fiermonte: The Evolution of Healthcare
in Orleans County—Part 3 16
- Memories of Orleans County Memorial Hospital 18
- North Country Hospital on Schedule 19
- New Hospital in Operation 20
- Remembering the Move from Orleans County
Memorial Hospital to North Country Hospital 21
- Downtown Newport Then and Now: One Chapter Ends
and Another Begins—Part 2 23
- Frog Run Family Reunion 29
- Flashback to the Frog Run Farm Commune 31
- A Pinch of This, a Pinch of That 34

Cover photo: This issue of the *Journal* includes three articles about life in Troy, Vermont, in an earlier time. The cover photo is of the village of South Troy. Photo from the Ted Alexander Collection, courtesy of the Old Stone House Museum.



Hoagie's
PIZZA & PASTA

Pizza • Subs • Salads
Appetizers
Daily Soup Specials
Poutine • French Fries

SEVERAL GREAT LOCATIONS!

Waterfront Plaza in Newport • 802-334-0200
Newport Derby Road, Rte. 5 • 802-334-5880
Route 5, Lyndonville • 802-626-1117
Northgate Plaza, Morrisville • 802-888-5565

hoagiespizzapasta.com

PUBLISHER'S DESK



Publisher Scott Wheeler

The Northland Journal: The Most Improbable Successful Publication

Every morning I jump out of bed ready to go to work recording the history of Vermont's Northeast Kingdom. I absolutely love my work and the *Northland Journal's* mission. Besides that, the *Journal* provides me the opportunity to meet amazing people—some who have lived far more interesting lives than I.

Some people—including some of my own friends, especially my business friends—thought my wife, Penny, and I were completely nuts when we founded the *Journal* in 2002. There are people who still think we are nuts—and there have been times throughout those 13 years when I would have agreed with them. I'm sure there will be days ahead I'll agree with them. On the other hand, I do know most of the people who thought we were crazy, or who still think we are,

support us and our mission. That's a great feeling.

While the *Journal's* mission is to write about and record the history of Vermont's Northeast Kingdom through the memories of the people who lived it, the *Journal* has been written about by other writers many times. Many have been fine articles, but I thought an article written by Mark Davis for the May 27 issue of *Seven Days*, a statewide newspaper—one with a worldwide presence online—truly captured the mission of the *Journal* and my insatiable desire to focus on the past, while others fret about the future, thinking that just maybe the world, including our country, is going to hell in a handbasket. Maybe my love of the past is a form of escapism from the present and worries for the future. In reality, I think

history helps put current events into perspective.

In preparation for writing the article, Mark, a nice young fellow and a great writer, spent an entire day shadowing me as I went about life. (Admittedly, I abandoned my daily half-hour afternoon nap that day.)

The following is an excerpt from the article:

When it comes to history and the Northeast Kingdom, it's impossible to know where Wheeler's work ends and his social life begins. He is the founder, publisher and lead writer for what might be the most improbable successful publication in the state: Vermont's Northland Journal, which offers "Memories and Stories from Vermont's Northeast Kingdom and Beyond."

(Continued on page 39.)

True Northland

In the NEK, a popular publication focuses on the past

BY MARK DAVIS

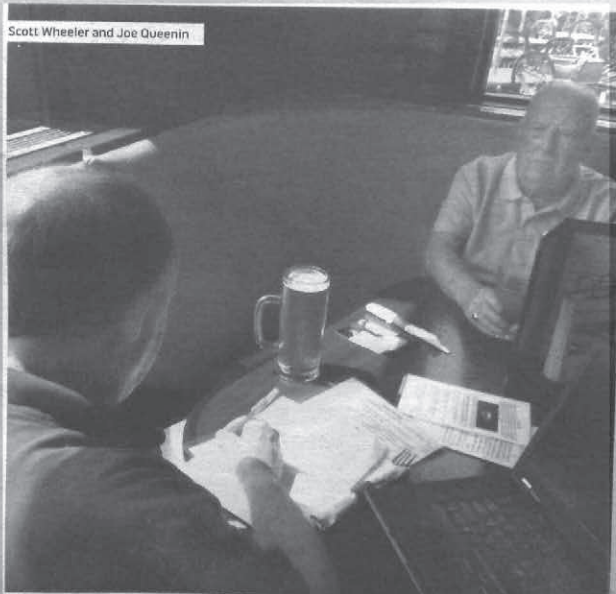
Scott Wheeler and his buddy Joe Queenin tucked into a corner booth at a pizza joint an hour before the lunch rush on a recent Tuesday in downtown Derby. Queenin, a 91-year-old World War II veteran, ordered his usual Guinness. Wheeler, 50, asked the waitress, whom he knows by name, for an IPA. Then he pulled out a bulky laptop and the men set to work. Every few months, they get together and revise Queenin's obituary. Wheeler showed off his latest draft and began asking Queenin questions to fill in some missing details.

"Where was your basic training?"
"Parris Island, South Carolina," Queenin answered.

Wheeler decided to add references to Queenin's work with the nonprofit Toys for Tots and his hobbies. "Golf — you played golf for years, right?"

The veteran pronounced himself pleased with the latest version, especially with the temporary language Wheeler inserted at the beginning of the obituary. The working draft has Queenin dying at the age of 105 while bungee jumping in the Grand Canyon.

Scott Wheeler and Joe Queenin



Photos are part of Mark Davis's article that was published in the May 2 issue of the *Seven Days* newspaper.

Water's Edge Bed & Breakfast

324 Wishing Well Avenue
Newport, Vermont 05855
(802) 334-7726

Visit our website
www.watersedgebnb.com

Whether you're just passing through Vermont's beautiful Northeast Kingdom or here to stay a bit, you'll enjoy your stay on the shores of Lake Memphremagog, a 29-mile lake that stretches from Newport, Vermont, to Magog, Quebec. Blue herons, ducks, otters, and loons, we have it all. We are only a short drive from dining, shopping, golf and Jay Peak Resort.

- Queen Bedroom \$100: TV, private bath across hall.
- Queen Bedroom \$120: TV, adjoining private bath.
- Suite \$150: Queen bedroom with sofa bed, livingroom, private bath, TV, VCR, gas stove, private entry.

All rooms are based on double occupancy.

NORTHEAST KINGDOM HUMAN SERVICES

Serving the people of Vermont's Northeast Kingdom since 1960

Services are available to children, youth, families, and adults who are challenged with:

- | | |
|------------------------------------|---|
| Behavioral and/or emotional issues | Developmental and intellectual disabilities |
| Family stressors | Other mental health and psychiatric needs |
| Chronic mental illness | |
| Addictions | |

Additionally, consultation, prevention, and education services are available to support law enforcement, schools, hospitals, and other community providers.

Emergency and crisis stabilization services are available 24-hours a day, seven days a week to residents in the Northeast Kingdom.

Mental Health, Addictions, and Developmental/Intellectual Disabilities Services

Derby Office
802 334-6744
800 696-4979

181 Crawford Road
Derby, VT



We're all about being human.

www.nkhs.org

Check our employment opportunities.

St. Johnsbury Office
802 748-3181
800-649-0118

2225 Portland Street
St. Johnsbury, VT

N

NORWOOD

GREAT SAWMILLS. SHOCKING VALUE.

Premium band sawmills from only **\$4397.**

Get your Free Info Kit!

Toll-free **800-661-7746** Ext **660**



NORWOOD
SAWMILLS

NorwoodSawmills.com



ANIMAL KINGDOM
PET GROOMING
Snickers Self-Serve Pet Wash

Animal Kingdom
*Pet Grooming,
Unique Gifts & Pet Supplies*

Michele Judd
Derby, VT 05829
www.DerbyAnimalKingdom.com

Dirty Dog?
15 minute wash and towel dry for \$15
Or visit Snicker's Self-Serve Pet Wash:
Walk-in \$12
Nails Clipped: Walk-in \$10





BOOKS+

We edit, design and lay out all types of books and publications!



Perron Graphics
802.525.1115
tjlj@perrongraphics.com



Little House Desktop Publishing
littlehouse@westglover.com

Summer Residents...

Bring the Journal Home With You!

Do you read the *Northland Journal* during your annual summer pilgrimage to the Northeast Kingdom and then miss it after your gone?

Buy a subscription of the Journal and have it delivered to your home-away-from-home in VT. Then after vacation, we will send the Journal to your permanent resident and you can read the Journal 12 months a year, not just during the summer!

Send a check or money order for \$25 (for delivery in the U.S.) to Northland Journal P.O. Box 812, Derby, Vermont 05829. Or order on line at www.northlandjournal.com. Be sure to provide both addresses.



SASH

If you qualify for Medicare, you qualify for the SASH program, free of charge! SASH partners with agencies already working in your community to make sure you can age safely at home, and connects you to activities going on in your area. To learn more visit www.sashvt.org, or call your local SASH provider, RuralEdge, to get in touch with a SASH Coordinator in your area!



RuralEdge
a Community Development Corporation

Open Monday through Friday, 8 a.m. to 5 p.m.
For more information call 802-535-3555 or Toll Free: 800.234.0560
Check out our website: www.ruraledge.org

Got Questions?
Call Scott at (802) 272-2030.



40 Years of Care

Home is where the heart is.

Our job is to keep you there.

- Home Oxygen - Stairlifts - Walking Aids
- Scooters - Bathroom Safety - Sleep Therapy



KEENE MEDICAL PRODUCTS
240 Meriden Road, Lebanon, NH 03766
1-603-448-5225 www.keenemedical.com
Accredited by CHAP "Bringing Healthcare Home Since 1975."

Dr. Butterfield: Caring for Patients for a Bag of Vegetables or a Load of Firewood

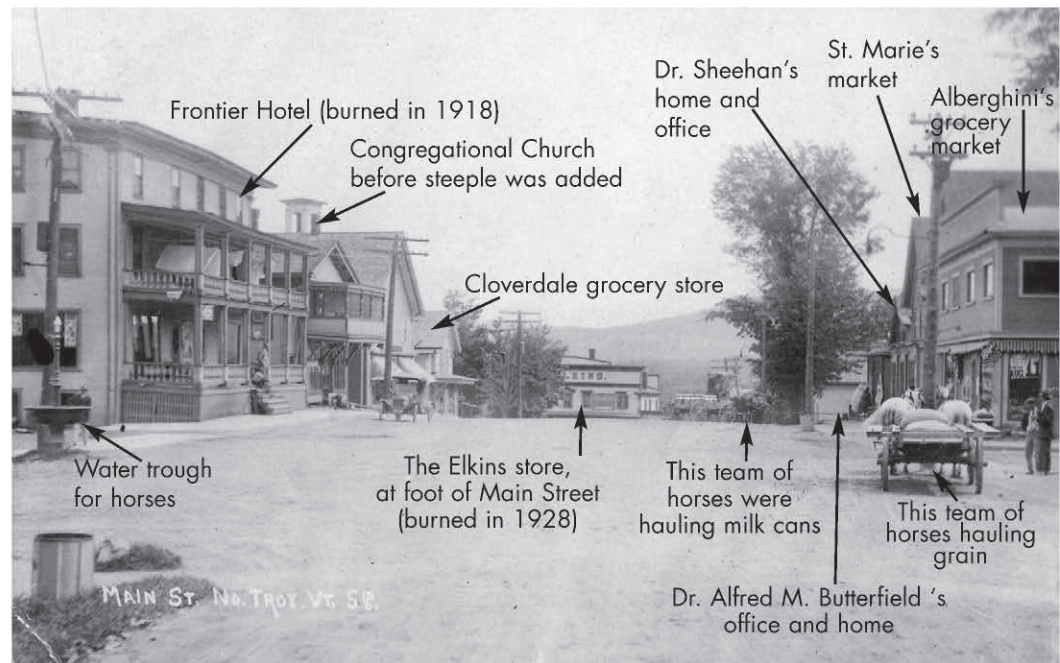
by David Butterfield

My father, Alfred Mitchell Butterfield, was born and grew up in North Troy, Vermont. He became a medical doctor and stayed in North Troy all his life. He died of cancer in 1937 at the age of 57. There was not much available to treat cancer in those days, and for the treatment he needed, he had to take the train to Montreal, and go to the Royal Victoria Hospital. Sadly, these treatments did not cure his cancer. I was nine years old when he died, and in the following article I am recalling memories from my childhood as well as things I was told about the practice of country medicine back then.

Our house at that time was located at the foot of Main Street in North Troy, and my father's office was in our house. It was quite common at that time for doctors to have their offices in their homes. First aid or urgent care facilities did not exist. If you needed medical help, you went to the local physician's home office. Office hours were every afternoon and evening. Mornings were spent making house calls. The waiting line of patients kept growing every day, especially in the winter months.

A doctor's best diagnostic tool was the ability to listen to the patient—making eye contact and listening carefully to what and how the patient said it.

Country doctors back then had to be able to do all sorts of things. My father routinely conducted general physical examinations, including eye exams and dental checkups, pulling a tooth if necessary. There were times he had to do minor surgery—in the office and sometimes in the hospital. He delivered



This is the village of North Troy that Dr. Alfred Butterfield knew. His son David Butterfield helped identify the buildings in this photo, including his father's office.

Photo from the Ted Alexander Collection, courtesy of the Old Stone House Museum

babies. Helping to control communicable diseases was important.

One of Dr. Butterfield's official responsibilities was monitoring the village's water supply—taking samples and sending them to the state of Vermont laboratory in Burlington. At times, during long, hot summers, a "BOIL WATER UNTIL FURTHER NOTICE" would be issued. North Troy water came from a reservoir high above the village, and when the water supply was low, it was easily subject to contamination. Certain diseases (measles, German measles, whooping cough, scarlet fever, rheumatic fever, mumps) would trigger "QUARANTINED" notices being posted on any home involved. It was many years before the water wells and water supplies and sewage systems were changed.

It was quite common to be awakened at odd hours by people knocking at our door because they needed medical help. One time, in the early hours of the morning, someone was knocking at the door and screaming. A couple of men had been drinking, they had gotten into a fight, and one man's head had been split open by a beer bottle. He was bleeding

profusely and needed help. My father got out of bed and got the fellow into his office, where he was able to clean his wound and patch him up.

Another time, I went to answer a knock on the front door and met a hiker—fresh off the Long Trail—who needed some medical attention. He had the longest, fullest beard I had ever seen, and he momentarily scared the devil out of me. I recall his name to be Mr. Larsen, and he turned out to be a very nice person. Mr. Larsen had to stay in town for a few days for his medical problems to be tended to.

This sort of emergency was forever popping up. Farmers and mill workers were often getting injured, some very seriously.

Once when my father was doing a surgical procedure in his office, he called into the main house for me to bring him my “Tom Mix” lasso. Seems he needed something to restrain a patient who was coming out of anesthesia, and my lasso turned out to be just right for the job.

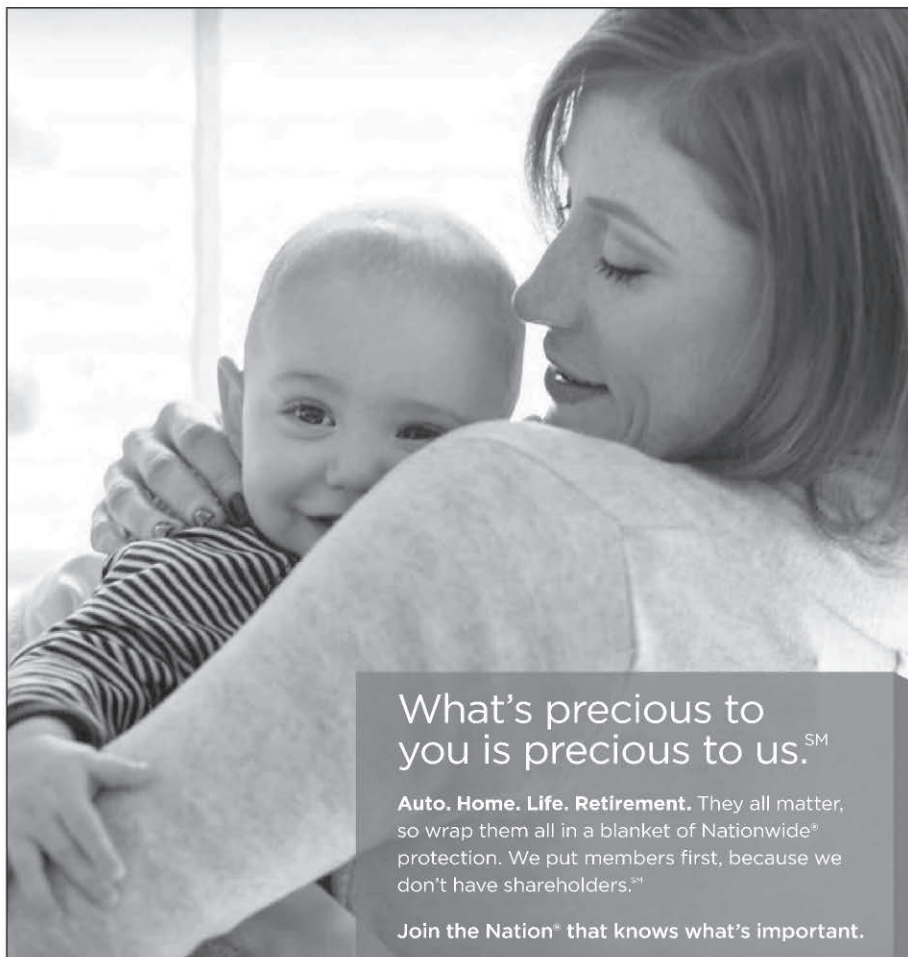
Doctors back then did not question a patient’s ability to pay, and there was no such thing as medical insurance. If you needed medical help, they helped and did what they could for you. If you could pay, that was good. If you didn’t have cash, the charge went onto an account. An office visit charge would include everything for about \$2.50 to \$5. Oftentimes payment was made with a load of wood for the next winter’s fuel for the furnace or a supply of potatoes, apples, etc., whatever might be worked out between doctor and patient.

No patient was ever turned away because of lack of funds. And I think that held true for most of the doctors of that time.

Sometimes there would never be a payment, either in food or cash. When my father died, my mother found that he was owed at least \$40,000, not a penny of which was ever collected.

Interesting from today’s perspective is the fact that my father kept his own records. He had no assistants, secretaries, or office nurses. This held true for most of the doctors practicing medicine in that period of time.

For that matter, in North Troy and surrounding communities, few doctors and professional



What’s precious to you is precious to us.SM

Auto. Home. Life. Retirement. They all matter, so wrap them all in a blanket of Nationwide® protection. We put members first, because we don’t have shareholders.SM

Join the Nation® that knows what’s important.

Combine your policies
and save up to 25%

Peter J. Campbell
Peter Campbell Agency
5498 US Rt. 5, Newport, VT 05855
(802) 334-6454
campbep4@nationwide.com



Nationwide®
is on your side

Not all Nationwide affiliated companies are mutual companies and not all Nationwide members are insured by a mutual company. Nationwide, the Nationwide N and Eagle Join the Nation. What’s precious to you is precious to us and We put members first because we don’t have shareholders are service marks of Nationwide Mutual Insurance Company. © 2015 Nationwide Mutual Insurance Company. NPR-0718AQ.2 (8/14)

Scenic View Community Care Home, LLC

979 VT Route 100, PO Box 154, Westfield, VT 05874

Residential Level III Care
Private & Semi-Private Rooms

802.744.6554



SCENIC VIEW
Community Care Home

Norm & Lyne Limoges R.N.
Nous Parlons Français
email: normlyne@vtlink.net

- Multiple physical therapy services offered
- Expert hands-on manual skills
- Warm water aquatic therapy
- 10 private treatment rooms
- English & French speaking

Mind, Body & Movement Center

See our class schedule at
www.freedomptyvt.com,
Facebook, or call for information.
Numerous classes offered including,
but not limited to:
Variety of Yogas, Water Fitness, Cardio
Party, Awareness Through Movement
First Class Free!



Personal training available.
Pool & gym memberships available by the day or the month
(802) 334-2400 Call to schedule your appointment.

Just south of the water tower on Rte. 105
In the Tanguay Office Complex, Newport, VT



Come visit Dave and Beth Bouffard and staff.
They know what their customers want...

QUALITY, GOOD PRICES, and SERVICE WITH A SMILE

Derby Village Store

Call (802) 766-2215 • Main Street, Derby



Attention homeowners:

Planning to build a new home or improve the one you are in? Blanchard Oil can provide a quote for new heating, plumbing, propane systems or modifications to your current system. We feature many types of propane and fuel heating systems, and friendly and efficient service technicians, competitive pricing and convenient scheduling.

Blanchard Oil

802-754-2389 Locally owned and operated.
www.blanchardoil.com

Farrant's
Flower Shop
and Greenhouse

325 Farrant St., Newport, Vt.
802-334-6597

*Let us help you with all your
Special Occasions*



*Newport City's Oldest
Established Business
Proudly Serving
for over 140 years*



Also visit us at
www.farrantsflowershop.com

The Club RESTAURANT & PUB

*A great meal with a view and
the best breakfast in town!*

Mon.: 1/2 Price Burger Night!	Fri.: Prime Rib & Seafood Specialties
Tue.: Breakfast, Lunch or Dinner	Sat.: Date Night!
Wed.: All You Can Eat Pasta Night!	Sun.: Breakfast All Day!
Thurs.: 1/2 Price Club Wings, Draft Specials All Day!	Serving Breakfast, Lunch & Dinner

Special appetizers during Sunday & Monday football.
BOOK YOUR PARTY TODAY! Let us help you plan your reception or other event.

Located at the Newport Country Club, 590 Mt. Vernon St., Newport City, VT
(802) 624-0176

OPEN 7 DAYS A WEEK! Open 8 a.m. to close.



This photo of Dr. Butterfield was taken c. 1927.

Photo courtesy of David Butterfield

nurses were available. Those who were there were good, and knew what they were doing.

I remember some of the doctors that he worked with: Dr. Gallanders of Mansonville, Dr. Adams of Newport Center, and Drs. Schurman and Rublee of Newport. In general, doctors consulted with each other and helped each other. It was a time of growth and understanding for the medical profession. If I remember correctly, there was a Dr. Tollerton in Newport, who was either a chiropractor or an osteopathic physician. I know my father consulted him on occasion. He even took me to him on one occasion during a period when I had a muscular problem. Dr. Adams was the attending physician at my birth, which was at home, as was very common at that time.

North Troy produced a good group of health professionals: Dr. Sheehan, a World War I surgeon; Dr. Herrick; Nell Rearden, Mrs. Paulette and Eleanor Roberts, nurses; Murray Dodge, a WWI field medic and local dairy farmer.

Getting around town: My father had an automobile, which was useful only in warm weather.



This is Dr. Butterfield's brass shingle that hung at his office in North Troy.
Photo courtesy of David Butterfield

Country doctors had to have a horse or two available. There were no hard roads, just scraped gravel. As a child I remember enjoying the onset of cold weather, snow, and all else that goes with a child's enjoyment of winter. It was the opposite for our fathers and mothers. The sleighs came out of storage in the barns, and would have to serve as local transportation until spring.

Dr. Butterfield owned his own horse; his name was Jimmy. Jimmy spent all summer on pastureland near the village of North Troy. A good share of the year, either a horse-drawn wagon or sleigh was called for. Sometimes, if my father had to spend an unusually long time with a patient at a house call, Jimmy would get a little antsy and he would attempt to pull his halter off. On those occasions when he succeeded, off he would go for home! Eventually Jimmy would be discovered in the barn, and someone would drive him back to where the doctor was still treating a patient.

My mother would usually answer the phone, which reminds me that telephone communications were very different. The actual telephone of the day was a box mounted on the wall, with a small speaker on the front, a cord connecting to an earpiece on one side, and a small crank handle on the other side. Calls all went through a central substation, referred to as "Central." To place a call, you cranked the handle, the "Central" operator would answer, ask what number you wanted, and would place the call. The operator was able to interrupt calls and cut in on calls, as necessary, to alert the people on either end

of the call that there may be another call waiting—useful in cases of emergencies. The “Central” operator was usually working from home; there was no telephone office or station.

So much more is now known about the human body today than was known back when I was a boy. Also, back then the lack of adequate pharmaceuticals and biologicals made it very difficult to treat patients. There was a lot of compounding done by the doctors themselves and by druggists. Elixirs, creams, cough syrups, ointments, and capsules are but a few of the

products compounded by either a doctor or a pharmacist. A doctor wrote a prescription—it would be filled and given to the patient—almost a “custom made” medication. The pharmacist or doctor had to know a lot about compatibility, emulsifications, creams, capsules, powders, and much more.

Today’s doctors have to accommodate patients in ways that differ from the past. Regardless of a physician’s personality and attitude, today’s doctors often have to listen to the patient with one ear while inputting the information into a computer. Electronics play a heavy role, and at a heavy cost. And while medical subsidies and insurance cover a lot of medical charges, the cost of medical care has multiplied many times.

The practice of medicine has changed so much since my father’s time, and since I was a child. It will keep changing....■

We are where you are.

Community College of Vermont **CCV**

www.ccv.edu

**Subscribe to Vermont's
Northland Journal**
Call Scott Wheeler at 334-5920 for more details.

Leslie Lockridge, M.D.

Hematology/Oncology • Internal Medicine

When Leslie Lockridge, M.D., arrived in Orleans County in 2006, the Yale-trained physician who has worked at such prestigious institutions as the Dana Farber Cancer Institute, and as an assistant professor of medicine at Brown University, knew it was where he wanted to call home. During his years in the Northeast Kingdom he earned a reputation as a caring and competent Oncologist (cancer doctor). In addition to seeing patients with cancer he also sees adults for their primary care needs.



Dr. Les Lockridge and his office manager, Danielle Wright, welcome Kathryn Mathieson (left), a Psychiatric Nurse Practitioner, to the practice.

A message from Dr. Lockridge: *When I left the Ivy League I came here with the intention of providing the best standard of care for cancer and blood diseases to the Northeast Kingdom. But I have received so much more. It has been a privilege to know and treat patients here with the methods I learned and used at Yale, Brown, and Dana Farber Cancer Institute, tailoring that treatment to your lifestyle.*

Dr. Lockridge’s office is located at 637 Union Street, Newport, VT 05855.
To make an appointment call (802) 334-7177. Office hours: Mon., Tues., Fri. 9 a.m.-4:30 p.m., Thurs. 12-6:30 p.m.

The following article is a segment from a book published by the now late Anne Huckins Butterfield. Her son David Butterfield wrote the previous article. Mrs. Butterfield's book, Memories of the Early Days in the Town of Troy, Vermont, was published in 1977.

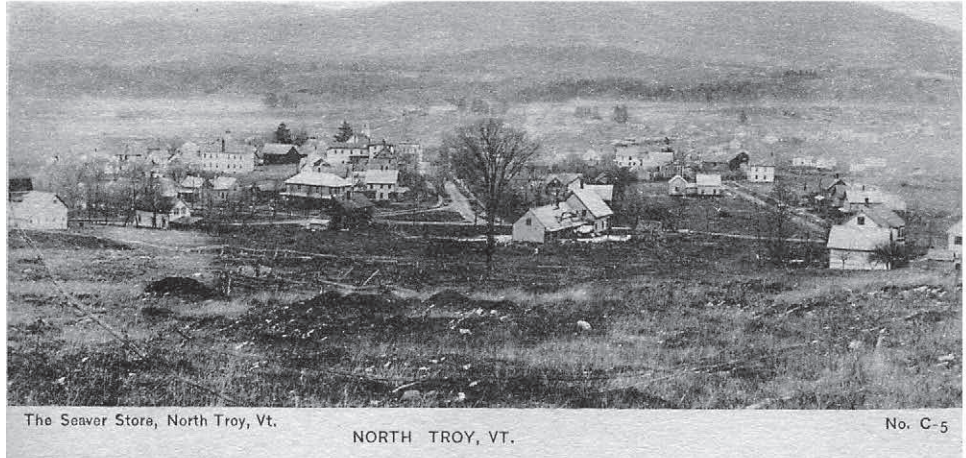
A History of Troy, Vermont

Troy lies in the northwestern part of Orleans County, 44 degrees, 55 feet N. Latitude, 74 degrees 36 feet W. Longitude, bounded on the north by Canada, east by Newport, south by Lowell and west by Jay and Westfield. It consists of 22,616 acres, population 1,413 in the 1970 census.

The town of Troy was originally granted in two gores of nearly the same size: the North gore to Samuel Avery and the South to John Kelley. The North gore was sold to a Mr. Atkinson and soon after that, land speculators came into the valley buying up most of the land, selling and reselling at the good profit for themselves, and this continued for several years.

The settlement of the town began about 1796-'97 when several men from Peacham, Vt., among them Captain Moses Elkins and a brother, Josiah Elkins, came to explore the country. They all agreed to come back to settle. Captain Moses Elkins and a young son did come, followed by his wife and baby on horseback, led by a hired man. They made camp in Potton, but on the approach of winter they went to Richford to stay during that time.

In 1797, a Mr. Morrill moved to North Troy and was probably the first white man to winter in the valley. Most of the early



The community of Troy was once a bustling railroad and mill town. This is a photo of the village of North Troy. Postcard photo from the Ted Alexander Collection, courtesy of the Old Stone House Museum

pioneers settled along the Missisquoi River where the soil was various and quite productive.

The principal rock formations were also varied. Iron ore was found in large quantities a few miles south of our Big Falls.

An iron mine was discovered in 1833 by a Mr. Gale, a blacksmith, who had resided in Troy previous to the War of 1812. The owner of the land where the ore was discovered was Fletcher Putman, who had purchased the lot of land for \$500. He gave a deed of one half of the ore to the discoverers for \$3,000. After a while he sold his interest for \$2,000.

Little was realized from the mine and it changed hands several times and was finally abandoned. However, there are several relics in our Missisquoi Valley Historical building on Main Street in North Troy. It is said that the

first large wood burning stove in the area, called the P.P. Steward, No. 6 was made there.

The town of Troy was first called Missisco (Missisquoi). It was organized in March 1802 and many of the first settlers were from Peacham and New Hampshire.

At the first Town Meeting six dollars was voted to be expended on roads and ten dollars for expenses of the town for a year. Hard times followed and several families left the valley because of the War of 1812. A fort was built in Troy and a small detachment of troops was stationed in North Troy.

Hardships continued, roads were few and badly located, and no regular merchants. The need for mills was a serious trouble; to get grain ground the men traveled on foot with the grist on their backs to Craftsbury, Derby, or



North Troy's Main Street in the early days.

Postcard photo from the Ted Alexander Collection, courtesy of the Old Stone House Museum

Richford. Travel was through the wilderness.

Other sources of discontent were loneliness and lack of neighbors. Some missed their churches and schools, but the hardy settlers surmounted their troubles by hard work and perseverance.

Josiah Elkins erected a mill in North Troy, and the first grist was ground there in October 1804. Two merchants traded in the valley; the largest establishment was in the South end and one in the North end on a smaller scale. The roads were bad and the most traveled was the old Hazen Road which had been built during the

Revolutionary War by Col. Hazen from Peacham to Hazen's Notch.

In 1820 the Burlington and Derby Road was partially made and had a good connection to North Troy. Another merchant established himself in the South end and business and travel concentrated there.

Schools were badly needed and \$10 was voted to take care of the schools in 1801; but it was 1804 before a treasurer was elected to take charge of that sum of money. Later \$16 was voted and by 1813 the first and second school districts were formed, and later the third and fourth districts, and by 1828 there were six well

organized school districts, and by 1861 there were 13 districts.

In 1858 the Missisquoi Valley Academy was established on the site where the present grade school stands in North Troy. That building is now located at the rear of the present school building. For years it was the home of the Knights of Pythias and more recently served as the Union Hall. Its future is yet to be decided.

The above school was the seat of higher education for "young ladies" and "young gentlemen."

In 1807 the population of Troy was 284; by 1820 it had diminished to 227 because of the War of 1812.

After the war, people came back to the valley as well as newcomers. Industries flourished up and down the Missisquoi River. A few of the early ones were: John Phelps came to Troy and located at the falls, about 1-1/2 miles north of South Troy and built a sawmill, a grist mill and a wool carding mill in 1816. In 1841 a Madison Stebbins in company with Curtis Phelps purchased the water power.

In 1847 they divided the property, Stebbins taking the sawmill and the privilege to

Your local REALTORS® ~ Creative, Motivated & Fresh



Like new custom built home in **LYNDON, VT.** Located on a town maintained road and only 10 minutes to Lyndonville, Danville or St. Johnsbury! A nice layout with two bedrooms and a bath on main living floor and a master suite on the 2nd floor. The walk out basement also offers a kitchenette, bath and plenty of additional space for a family room. Come see this beautiful home!

\$195,000

101 Depot Street
Lyndonville, VT 05851
802-626-4790

www.StoneCrestPropertiesVT.com

Cindy Sanville, Broker/Realtor



Century 21
Jack Associates
Morrisville, VT

Serving the Northeast Kingdom of VT
802-754-8457 Home
802-673-8102 Cell
sanville.cindy@gmail.com
www.c21jack.com

manufacture all kinds of lumber. Mr. Phelps took the wool mill with privilege of running two sets of machinery and manufacturing cloth.

In 1872 they sold out to C.P. Stevens Co. of Troy, who continued in flour mills and furniture manufacturing. In 1820 a John Hamilton from New Hampshire settled in Troy and manufactured starch and bricks.

Luke Aiken and two sons also from New Hampshire came in 1800. The sons were G.W. Aiken and J.B. Aiken, who also settled in Troy. In 1837 a tavern was started in South Troy by Ezra Johnson. In 1828 Dr. David Beard first settled in North Troy and then moved to South Troy.

The railroad came to Newport in 1864, which greatly helped the settlers to get their produce to an early market.

In 1871 the railroad came through North Troy and then businesses of the town moved gradually from the South to the North.

With the advent of the railroad and the lure of cheap government lands in the West, many people left the valley by rail and invested in western lands. A few returned, but a large number stayed in the West, built homes and settled there. Those left here continued to fight the hardships and with hard work, the town grew and prospered. Mills of various kinds were built along the river; merchants, lawyers, doctors, dentists, photographers, and druggists opened places of business.

In 1887 a trotting park was built by the horsemen of the town. It was situated on Dominon Avenue, North Troy, in an area now occupied by the American Legion and the big baseball diamond. A judges' stand was built, and many exciting races took place there until the last of the 1800s.



This photo of North Troy's Main Street was taken on July 6, 2015. It was taken from nearly the identical location as the photo on page 6 of the previous article that was taken more than 100 years ago.

Photo by Scott Wheeler

Two hotels were in operation, the largest one being the Frontier House, located where the Chittenden Trust Company now stands. The other hotel, Ladd's Hotel, was located on Railroad Street on the site where Mrs. Candide Blais now lives.

John Currier erected a flouring mill in North Troy with a capacity of one hundred barrels per day.

A newspaper was started by M.T. Hatch in 1874, and was purchased by A.H. Butterfield and Mr. Jameson in 1881; and later Mr. Butterfield purchased the paper that continued as the *North Troy Palladium* until it was sold to Gilpin and Hunt in 1922.

Meantime, electricity had replaced the old kerosene burning street lights, lighted at dark by the "old lamplighter." A few families had electricity installed in their homes. Stores were lighted and, in general, things were looking better and brighter.

Lumber mills of various kinds still did business on both sides of the river. A few names of those participating were J.R. B. Hunt, Harry Parker, Bernard Parker, Alvin Aiken, Orison Hadlock, John

www.nekchamber.com 802-748-3678

**NORTHEAST
KINGDOM**
Chamber of Commerce

2000 Memorial Drive-Ste. 11, St. Johnsbury, VT 05819

**BLANCHARD
LITHO**

*Proud to print the Northland Journal
Fast, Reliable, and Reasonable Prices!*

800.361.0266
Sherbrooke, Quebec, Canada



The village of South Troy.

Postcard photo from the Ted Alexander Collection, courtesy of the Old Stone House Museum

Currier, Selden Eastman, Jonathan Elkins, William G. Elkins, George May, George S. Parker, Byron Parkhurst, Ezra Seaver and Sons, H.B. Parkhurst, F.S. Forsaith,

Darius Johnson, Nathaniel Hammond, and others not mentioned, who played a large part in establishing the villages of South Troy and North Troy and



This photo of the village of Troy (South Troy) was taken on July 6, 2015. It was taken from nearly the identical spot that the front cover photo was taken 100 or more years earlier.

Photo by Scott Wheeler

contributed to the growth and development of the entire town.

In 1903-'04, Myron J. Blair, with the financial help of other people, including some of the citizens of North Troy, formed the stock company known as the Blair Veneer Co. This gave employment to many people, who continued working there after it was sold to the Owen-Illinois Co., and later to the Weyerhaeuser Co. In 1970 the mill was closed and many employees were out of work.

We now have two very important industries in South Troy, namely the Kraft Foods Division of Kraft Corp. and the United Farmers of New England, Inc. [Both of these industries have closed since Ms. Butterfield's book was published in 1977.]

We are more or less connected with the Jay Peak Ski Area and the Space Research Laboratories, which both provide employment for many of our people. [Space Research is now closed, but Jay Peak Resort now employs hundreds of people, including many Troy residents.] Also, our population hasn't increased very much, and we do have a fine group of residents, and it is not a dead town by any means. We can truthfully say that Troy had a grand and glorious past and the future holds much for the company. ■



Record Your Story in the Pages of History

The *Northland Journal* is dedicated to sharing and preserving the history of Vermont's Northeast Kingdom through the words of the people who lived it. Why not consider recording your memories of the Kingdom in an earlier time in the pages of the *Northland Journal*. Keep your memories alive for eternity.

Send stories and/or photos for consideration to Vermont's *Northland Journal*, P.O. Box 812, Derby, VT 05829.

Or you can email them to northlandjournal@gmail.com

North Troy: Life in a Northeast Kingdom Border Community

by Wesley A. Merriam

In the early 1940s, I was a teenager living in North Troy. Our house was less than half a mile from the Quebec border. I liked to hunt, fish, and nature walk along the Missisquoi River, which pops in and out of Canada until it finally heads north to Highwater, Quebec, and back into Vermont near Richford. If I was carrying a fish, duck, or partridge, or maybe just to say “hello,” the Canadian Customs guys would give a short blast on their sirens, which was my signal to hold up the game so they could see it. When they had seen enough, they’d give a few short blasts to say “thank you.” The border at that time was a 50-foot clear-cut of trees and bushes. Thinking about this in later years, I believe that they kept it to short blasts so the U.S. Customs and Immigration officers wouldn’t think that big trouble was headed their way.

I was friendly with the staff at both offices and would often bike or walk up and chat with the men at both offices. The U.S. guys would often “cuff” me and put me in their downstairs slammer, but with a tall glass of their artesian well water. This was under tremendous underground pressure and came out of the tap milky white with tiny air bubbles. It was fun as a kid to chugalug the drink which would produce one or more nice loud burps.

North Troy’s drinking water reservoir was in a cow pasture on the North Jay Road. It was fenced in with barbed wire, but in hot and dry weather, oftentimes, the cattle would smash down the fence and drink and wallow to their heart’s content. This happened rather frequently and quickly produced a “Don’t drink the water without boiling” notice from the village and town offices.

Customs and Immigration allowed folks to drive in and fill one gallon glass jugs with their water. This was before plastic jugs or trunks on automobiles. So folks would put them on the floor

in the back or front seats and first-time users would screw the caps down tightly.

My brother, sister and I liked to sit out on the front porch in the evening and watch the scene up on the highway. Air pressure would increase in the jugs and soon after leaving Customs, the jugs would start to pop. Cars would stop; people would pour out and try to loosen the caps on any remaining jugs. Often, there were people running around the car and waving their arms. We kids would pass around an old pair of opera glasses which had cloudy lenses and little magnification. But it was still great kid fun.

On Pine Street, headed for Bear Mountain Road, there was a short road going left and north which soon crossed the border. A retired North Troy lady school teacher who was a friend of my parents lived just beyond the border. There was a tiny Canadian Customs office which was usually unmanned. But whether it was manned or not, we were on our honor to drive up to the U.S. office and report in. The officer would see us do a 180-degree turn and pull up to the door. Our folks would say, “Five of us went to visit Miss So and So, and all five of us came back.”

Compare the above to what it’s like to enter and leave today. I still have an unexpired passport.

Coming back one time, I was just learning to drive our black 1932 Plymouth, at the age of 15, with our family aboard and turning back onto Pine Street; the street was barricaded with men carrying Thompson machine guns. I was really scared and Dad kept yelling, “Stop! Stop!” I don’t remember if I thought we were going to be shot, but I finally did stop. I remember the men yelling, “Stay in the car, just stay in the car!” They looked in and said we were okay to leave. Dad was justifiably really angry and asked what this was all about. The men said to read tomorrow’s paper and we’d find out. Sure enough, the next evening’s paper said that a “blue 1932 Plymouth loaded, with 13 Chinese aliens, had been intercepted the night before.” ■

I remember the
men yelling, “Stay
in the car, just stay
in the car!”

Dr. Frank Fiermonte: The Evolution of Healthcare in Orleans County—Part 3

by Scott Wheeler

By the 1960s, healthcare in the Northeast Kingdom was changing. The Northeastern Vermont Regional Hospital (NVRH) opened its doors in St. Johnsbury in 1972. That was followed by the opening of North Country Hospital (NCH) in Newport in 1974.

When Dr. Frank Fiermonte, now 94 years old and living in Venice, Florida, opened his medical practice in Derby, Vermont, in 1945, a few hospitals dotted the Northeast Kingdom, and many of the more sizable communities in the region had a least one doctor practice. Two hospitals Dr. Fiermonte worked in that have since closed were Orleans County Memorial Hospital, and Broadview General Hospital, both located in Newport. (Both were written extensively about in the August issue of the *Journal*.) The arrival of NVRH and NCH brought the end of an era for healthcare in the Northeast Kingdom and the beginning of a new one. He went on to care for patients at NCH, but he was never affiliated with NVRH.

“The new hospital [North Country] was nice, but I didn’t think the other hospital [Orleans County Memorial Hospital] was too bad either,” Dr. Fiermonte said. “It needed to be updated a bit. I’m not sure what they were thinking when they decided to build a new hospital, but maybe there was a good reason.” He



North Country Hospital in Newport opened in 1974. This is an early photo of the hospital and its campus.
Photo from the Scott Wheeler Collection

noted he wasn’t in a position at the time to know what the hospital administration and the board of directors were thinking. However, he is fairly certain the doctors and medical staff couldn’t provide any better care in the new hospital than they did in the old one. He is also doubtful the new hospital attracted additional patients to help offset the cost of building it.

Dr. Fiermonte praised North Country’s first president and CEO, Tom Dowd. “Tom Dowd was a very good administrator. He really knew what he was doing.”

As he did in the two old Newport-based hospitals, Dr. Fiermonte did rounds in the new hospital, visiting his patients. However, unlike the Orleans County Memorial Hospital where

family practice doctors took turns being on call to respond to the emergency room (ER) for emergencies, (doctors weren’t in the ER 24/7 like they are today, and he doesn’t recall Broadview Hospital having an ER), the new hospital hired specially trained ER doctors to work in its ER.

Although he appreciated the comforts of the new hospital, when NVRH and NCH were little more than ideas, Dr. Fiermonte said he remembers wondering why build two community hospitals and not one sizeable medical center centrally located in the Kingdom.

“I think that would have made more sense,” Dr. Fiermonte said. “We could have had a medical center that competed with the medical centers in Hanover and

Burlington.” Instead, what the Kingdom got was two nice little hospitals with competent staff, but ones which to this day require area residents to travel outside of the region to such places as the University of Vermont Medical Center in Burlington or Dartmouth Hitchcock Medical Center in West Lebanon, New Hampshire.

“Major surgeries should not be done in most local hospitals,” Dr. Fiermonte said. “Most local hospitals were not meant for that.” Instead, he said, they were meant more for emergency medical care and routine medical care as well as relatively minor surgeries such as appendectomies, tonsillectomies, gall bladder removal, and the repair of some broken bones.

To this day he opts to have surgeries at medical centers versus community hospitals. Dr. Fiermonte emphasized it isn’t that the doctors in smaller hospitals are incompetent. Instead, he said, many community hospitals, including in Vermont, lack a support team of medical specialists, including a pulmonologist or a cardiologist, to assist in emergencies that might occur on the operating table, especially during complex operations. In most cases, he explained, it isn’t that the administration of small hospitals doesn’t want the array of medical specialists often found in medical centers. Instead, it is the lack of potential patients to draw from that makes hiring them financially infeasible.

“You want the specialists right on hand, not 80 miles down the road,” Dr. Fiermonte said. Instead of building a single, centrally located, full-service medical center, and possibly a small urgent care type hospital in Newport and St. Johnsbury, NVRH and NCH were built—both hospitals trying to woo the limited number of patients who live in the Kingdom.

With the construction of I-91 in the late 1960s and early 1970s, which directly connected Newport and St. Johnsbury, building such a medical center would have been perfect timing. The interstate

“It was vile and smelly,” Dr. Fiermonte said. “It worked, but ether was a horrible anesthesia.”

would have provided direct access to the center for many residents of the Kingdom as well as ambulances.

Dr. Fiermonte leaves no doubt he loved being an old-time country doctor in which he cared for some patients from birth to death. By the 1960s, he said he realized, for good and bad, the era of the country doctor—where the doctor was more than a doctor, and often part of a patient’s extended family—was coming to an end as medicine and the way it was administered began to rapidly change. Dr. Fiermonte didn’t just sit back and watch the changes

happen. He became part of some of the changes.

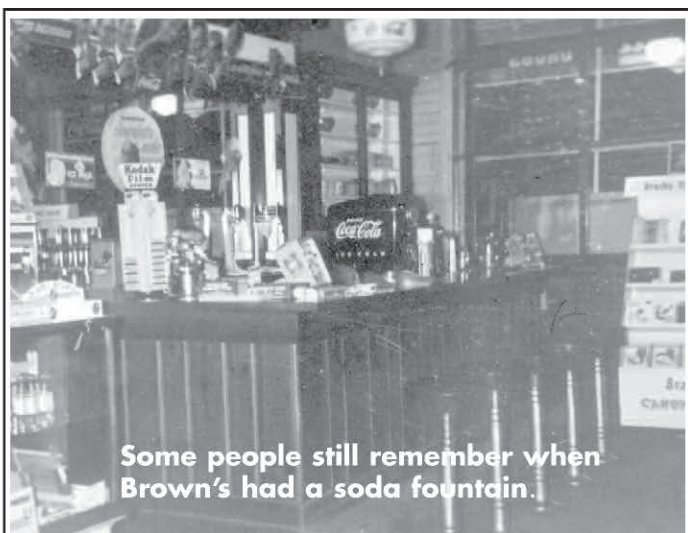
“Medicine keeps changing and doctors need to keep up with the times,” he said. To stay up on medical advancements, he often used his days off, usually Wednesdays, to attend medical meetings in Sherbrooke, Quebec. He continued his education first in cardiology and coronary care, and in the 1960s, he studied anesthesiology at the Fletcher Allen Medical Center (now the University of Vermont Medical Center) in Burlington. When he began administering anesthesia as a physician anesthesiologist at Orleans Country Memorial Hospital, he said, they were still “dropping ether” to sedate patients.

“It was vile and smelly,” Dr. Fiermonte said. “It worked, but ether was a horrible anesthesia.” When most patients awoke, they were violently sick to their stomach because of the ether.

By the time North Country Hospital opened in 1974, he said he’d abandoned ether and helped welcome in a new era of anesthesia to the region. He was involved in introducing halothane, a gas inhaled to sedate them. “Gas was far better than ether,” he said, noting patients no longer awoke violently ill.

“Administering anesthesia is an art,” Dr. Fiermonte said, “but it was repetitive. I preferred family medicine and working with people.” In time, he returned to his focus of family medicine. ■

Part 4 of the series will appear in the October issue of the Journal.



Some people still remember when Brown's had a soda fountain.

Brown's Drug Store was founded in 1889 and has been doing business in Derby Line ever since. More than a hundred years later pharmacist and owner, Buzzy Roy, is still doing business with the old-fashioned, yet never outdated, belief that the customer is more than a number; the customer is a friend.

Shop Brown's for all your prescription and over the counter needs. A visit to Brown's is more than a visit to a store; it's a journey into an important part of Derby Line's past.

BROWN'S DRUG STORE

40 Main Street, Derby Line, Vermont 05830 (802) 873-3122

ASKING FOR HELP IS
NOT IN HER NATURE...

**MAKING SURE SHE
GETS IT IS IN OURS.**



One out of every seven Americans – old, young, middle-aged, infirm or disabled needs home care. We are dedicated to that one in seven. Home care preserves the self determination and dignity of the individuals who need our assistance. Our services are available twenty-four hours a day, seven days a week to assure that you are receiving the medical attention you deserve.



**Orleans/Essex Visiting Nurse
Association & Hospice, Inc.**

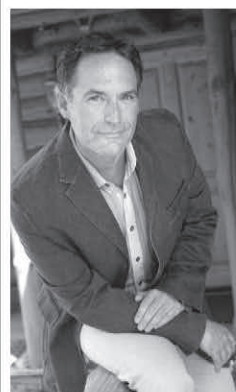
For more information about home health care and hospice services, contact us at 802-334-5213, or, visit us online at www.orleansessexvna.org.

Memories of the Orleans County Memorial Hospital

I was born at the Orleans County Memorial Hospital, and I became the first Rh factor baby. Dr. Piette changed my blood at 24 hours old. During this time there was a registered nurse who had two children, a girl, Judith, and a boy, John. She was hoping someone would name a child after one of her children as she was going to retire. This is where I got my name.

My family made a number of trips to visit my mother following surgeries there. My brother and sister were also born at the Orleans County Memorial Hospital as well as several cousins. When the hospital closed and it became Slalom Skiwear, I worked there as a stitcher for almost nine years until it closed in February of 1991.

Judith (Prive) Gilman



Dr. Don E. Harris has over 30 years practicing both chiropractic and clinical nutrition. He has successfully treated 1000s of patients for a wide variety of conditions, both musculoskeletal and serious systemic illnesses. At the University of Illinois he lectured health students on how nutrition, lifestyle, and environment today can effectively treat disease and not just address the symptoms. Working with your primary care physician and other health care professionals can have dramatic, positive effects on most of today's diseases. Each visit with Dr. Harris either for chiropractic or nutrition is comprehensive averaging one hour. Every patient deserves the right and respect to be treated as a human being and not just a number.

Chiropractor

Headaches
Neck pain
Shoulder/Elbow Pain
Sports Injuries
Low Back Pain
Sciatica
Knee Pain

Clinical Nutritionist

Cancer
Heart Disease
Diabetes
Irritable Bowel/Crohn's/Colitis
Autoimmune Disease
Fibromyalgia
Weight Loss/Management

Office: 79 Coventry St., Suite 4B, Newport, VT
(Across from Pick and Shovel)

802 334 3000 Most Insurance Accepted

Pat Hunt wrote the following article in the months leading up to the opening of North Country Hospital in Newport in January 1974.

North Country Hospital on Schedule

by Pat Hunt

Labor strikes during the prime building months caused some delay in the construction progress of the North Country Hospital, but all is back in full operation.

Hospital administrator Thomas Dowd noted the halfway point has been surpassed and the new health center should open next September.

Construction began Aug. 23, 1971, on the 80-bed general short term hospital designed by Cannon Partnership of Buffalo. General contractor is Wright and Morrissey Inc. of Burlington.

Strikes of various trade unions between April and Labor Day put the project about four months behind schedule, according to James W. Sever Jr., resident representative in the field for the U.S. Office of Health, Education and Welfare, the architects, and the North Country Hospital Association.

"With plumbers, bricklayers, and operating engineers off for various periods of time, we were short-handed, but work has progressed," Sever said. "We're now running a full team—60 men on the job today of mixed trades including carpenters, plumbers, elevator mechanics, and operating engineers."

The yellow brick-faced building, with sections of two and four stories, is enclosed in plastic so work can continue during the winter months. It is located on a 30-acre site on Ferry Road [later named Prouty Drive].

The hospital trustees, meeting last week, voted to also construct a medical office building on the same site, once the hospital is completed. The adjoining structure would be self-supporting through rental income and would not require public money, Dowd said.

The ground floor of the hospital will house support services including the dietary department, cafeteria, central supply, laundry, boiler room, classrooms, and a medical library.

A lobby and general waiting areas are being laid out on the first floor along with business offices; outpatient services such as emergency room,

laboratory, X-ray, and physical therapy; and the operating room suite and recovery room.

Surgical, medical, pediatrics, and obstetrics patients will be on the second floor and medical, surgical, and coronary care on the third.

The building design provides for expansion of the third floor by 24 beds and the addition of a fourth floor where the mechanical air equipment, electric panels and elevator machinery are installed.

When the hospital opens, it is expected to employ an additional 26 to 30 on the staff, according to Dowd.

The present hospital, originally called the Orleans Country Memorial Hospital, dates back to 1922. The 72-bed facility is in a 26,000-square-foot building while the new 80-bed hospital has 80,000 square feet and is built to the minimum of federal and state construction standards.

The \$5-million building is being financed half with federal funds and half with money raised locally. Under the Hill-Burton Hospital Act, \$1.5 million; the Office of Economic Opportunity, \$600,000; and New England Regional Commission, \$100,000; the federal money has been authorized. Of the local share, about \$750,000 comes from the public fund drive that has been pledged over the past three years, and the remainder will be from mortgages.

The annual meeting of North Country Hospital will be Nov. 29 at 8 p.m. in the Goodrich Library. ■



Tune into the *Vermont Voice* radio show every Sunday morning at 6:30 on WJJZ Country on 94.5 FM.

The show is hosted by Scott Wheeler, the publisher of *Vermont's Northland Journal*.

The following article is from the January 7, 1974, issue of the Newport Daily Express.

New Hospital in Operation

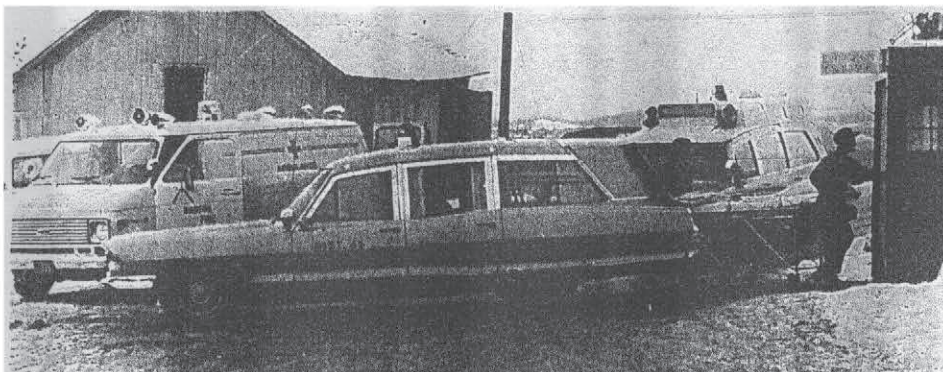
The ambitions, labors and expenditures of this area were culminated this weekend with the opening of the new North Country Hospital and Health Center on Prouty Drive in Newport.

The five and a half million dollar facility was officially opened for admissions at 7 a.m. Saturday, and Hospital Administrator Thomas Dowd reported that the first weekend went "very well indeed," with the usual volume of scheduled and emergency admittances.

With a total time of two hours and three minutes, 24 patients were transferred from the old hospital to the new, starting shortly after noon Saturday.

Two ambulances from Newport and one from Derby and another from Barton, provided the transportation in the move. Ambulances from other towns were ready to cover the area in the case of emergencies.

During the past months, personnel from the old hospital were familiarized to the new building, so that when the move finally came, there would be no problems adapting to the new facility.



OUT OF THE OLD, INTO THE NEW — Twenty-four patients were transferred from the old hospital to the new this Saturday, in a problem-free move that lasted two hours and utilized four ambulances from Newport, Derby, and Barton. Hospital Administrator Thomas Dowd reported that the first

weekend in the new facility went "very well" with the usual amount of admissions. Above, ambulances arrive at the old hospital for more patients, and below, arrive at the new facility on Prouty Drive. (Photos By Blanchard)



The above caption reads: **OUT OF THE OLD, INTO THE NEW** — Twenty-four patients were transferred from the old hospital to the new this Saturday, in a problem-free move that lasted two hours and utilized four ambulances from Newport, Derby, and Barton. Hospital Administrator Thomas Dowd reported that the first weekend in the new facility went "very well" with the usual amount of admissions. Above, ambulances arrive at the old hospital for more patients, and below, arrive at the new facility on Prouty Drive.

(Photos by Blanchard) From the *Newport Daily Express*

The phone number at the new hospital remains the same as it was at the old — 334-7331 [the number remains the same to this day]. ■

Mary E. Wright Halo Foundation:



Three of the four Wright sons and their partners: Back row, from left to right: Chad, Matt, and Todd. Front row from left to right: Amanda Wright, Cassy Moulton, and Hillarie Wright. Missing from the photo is Benjie Wright.

When Mary E. Wright of Derby died of cancer, her husband, Ulric Wright Sr., was devastated. He died two months later. Family members say he died of a broken heart. In despair at their loss, the couple's four sons and their partners founded the Mary E. Wright Halo Foundation, a foundation dedicated to helping people with cancer. Unlike many organizations, nobody involved in the Halo Foundation is paid, and 100 percent of the proceeds go toward helping people with cancer. The group also donates time helping people with cancer, whether it is mowing a lawn, or piling firewood.

To contribute to the fund, send donations to Mary E. Wright Halo Foundation at 1071 Upper Quarry Road, Newport, VT 05855. If you'd like to volunteer or learn more about the Halo Foundation, call (802) 334-7553 or email halofoundationNEK@gmail.com. Also check them out at mewhalofoundation.org or at www.facebook.com/mewhalofoundation.

The following is an excerpt from an article written in 2009 (with some minor changes) as the subject of the article, Yvette Deslandes, celebrated half a century in the healthcare world. Yvette went on to retire from the hospital in 2011.

Remembering the Move from Orleans County Memorial Hospital to North Country Hospital

by Scott Wheeler

Raised on the family farm in Irasburg, Yvette (Messier) Deslandes has never been a stranger to hard work. When it was her time to make her own way in life, she was ready for a path that would take her off the farm. That path led her to a career at North Country Hospital, a career that has stretched to 50 years.

Soon after graduating from Orleans High School in 1958, Deslandes applied for jobs in a number of stores on Newport's Main Street, which at the time was filled with stores and shoppers, but she also decided to apply for a job at Orleans County Memorial Hospital. She began her career at the hospital as a nurse's aide.

"It was my first and only real job," Deslandes said. "I was paid 75 cents an hour. I thought that was pretty good pay."

Today's aides undergo extensive training before they begin work, but Deslandes said back in those days everything aides did they learned while on the job.

In 1972, Deslandes began work as a technician in Central Sterile Supply at Orleans Memorial Hospital. She and the other technicians were responsible for ensuring the sterility of the medical equipment and other items associated with hospital life. It's a position she held until her retirement in 2011. She served as the director of the department for many years.

The year 1974 brought a new era in healthcare—the opening of the brand-new North Country Hospital on Prouty Drive. It was built to replace Orleans County Memorial Hospital. However, before the new hospital could open, it was necessary to get the medical equipment from the old hospital to the new one. Today's modern, often multi-million dollar high technology medical equipment would require intricate planning and special moving procedures to make such a move. However, in 1974, the employees



Yvette Deslandes (left) worked at both Orleans County Memorial Hospital and North Country Hospital in Newport. Yvette, who retired from North Country Hospital in 2011, worked much of her career in Central Sterile Supply. Seen with her is her co-worker at the time, Tonya Ratté. Photo by Theresa Perron-Janowski

simply loaded much of the equipment, which was primitive compared to today's standards, into their personal cars and trucks and transported it across town to the new hospital. This undertaking occurred right after the beginning of the year.

"I remember it was a cold day," Deslandes said. "I have no problem remembering that."

To this day she remembers how excited she and the other workers were when they settled into their new digs. Gone were the cramped rooms, replaced by new, spacious, patient friendly rooms. She and the other employees couldn't imagine a day when they'd grow out of their new surroundings. However, the passage of time brought new, often larger medical technology to the hospital—technology that slowly began filling the spaces requiring expansions.

The move from Orleans County Memorial Hospital to North Country Hospital and the modern medical marvels are not the only changes she has seen during her tenure. Whereas much of today's medical care is done on an outpatient basis, meaning patients come in, undergo the necessary medical

procedure, and go home the same day, she said back in the old days, patients often stayed in the hospital for days, and sometimes weeks, to recuperate. In worst case scenarios, patients could stay as long as 120 days, go home for a day, and return and stay another 120 days. For example, in the old days, people who had their gallbladder removed could expect to stay in the hospital for several days. They now come in the morning, have their surgery, and go home the same day. And while tonsillectomies often required an overnight stay, it too is now typically done on an outpatient basis. The number of outpatient surgeries means there is less need for patient beds.

Then there were the babies—or now, the lack of them. “We had a lot more babies back then than

we do now,” Deslandes said. “We used to average better than 30 to 50 babies a month. We don’t have anywhere near that today.”

[During the last decade, births at the hospital have dropped to a bit more than 200 a year.] She attributes part of that change in numbers to the fact that families are having fewer children. In the old days it wasn’t rare for a couple to have more than half a dozen children. Today’s average is about two children.

Life in Central Sterile Supply hasn’t remained stagnant either. Looking back in time, Deslandes said she can’t believe the changes and how they did business in the old days. Today they work in head-to-toe hospital scrubs in a room that is off limits to anyone not dressed in such attire. This is

an attempt to ensure the sterility of the hospital tools, equipment, and supplies that they handle. In the old days they often wore simple hospital dresses.

The sterilizing equipment has also evolved over time. Much of the modern, high tech sterilizing equipment is computerized. Today many items used in the hospital are disposable, but that wasn’t the case decades ago. Many items were reused, including hypodermic needles and gloves—both items that are now thrown out after each use. Gloves were washed, sterilized, and used again. And hypodermic needles, which had already been used for injections, were re-sharpened, sterilized, and used again. This was done numerous times. “Sterility is certainly a lot better than back then.” ■



Long Distance Love™

Keeping an eye on the ones you love.

- Daily or weekly check-ins
- After storms and power outages
- 24-hour emergency number

NEKHC has been helping seniors remain independent by providing in-home personal care, housekeeping and companionship for over ten years.

Now check out our economical alternative for individuals that manage most of their day-to-day needs but would benefit from an occasional check-in. We make sure there is heat and power, food in the refrigerator, and prescriptions being kept up-to-date. Storm checks verify restoration of power. Scheduled visits up to one hour and biweekly written reports.

Call (802) 334-7604 for more information.

NEKHC

Northeast Kingdom Homecare, Inc.

PO Box 250, 100 Second Street

Newport, VT 05855

www.nekhc.com

Downtown Newport Then and Now: One Chapter Ends and Another Begins—Part 2

by Scott Wheeler

In the winter of this year, when an excavator ripped into the building located at the corner of Main Street and Second Street in Newport, it was the end of an era in Newport. Converse Goodrich built the house as his home in 1861.

The Converse building, which was likely the oldest building in downtown Newport, was one of several aging buildings in the so-called Spates Block, a block which stretched from Second Street, down Main Street, to Central Street. It was demolished to make way for the construction of the Renaissance Block in the undetermined future. Although what was Mr. Converse's home is now a vacant lot, his dream, the Goodrich Memorial Library, stands directly across Main Street. Built in 1898, the library is a center of activity in downtown Newport.

"We believe that the oldest building now standing is the building where Jon Somes Salon is located on the first floor," Ernestine "Steeny" Pepin of Newport said. "Way back when, it was called the Exchange Block."

For the better part of two decades, Pepin and Sandy McKenny have quietly, yet diligently, sifted through the historical documents now stored in the vault in the basement of the Goodrich Memorial Library. When they undertook the project, the documents were a disheveled,



Newport's Main Street has been ever evolving. Note the building on the right side of the street undergoing a major facelift.
Photo from the Scott Wheeler Collection

undocumented mess. They set out not only to organize the material, but also to document it. More recently, they have also been looking for tidbits of information about every building that has ever stood on Main Street. They have

been working to document the year the buildings were built, the owners of these buildings, and the businesses and some of the prominent people they housed.

This segment of the series pertains to the block that was torn



An excavator tears into the former Converse Goodrich home, which was built in 1861. Paul Dreher did a remarkable job capturing the demolition of the so-called Spates Block.

Photo by Mr. Dreher



This is a portion of the *Newport Then and Now* exhibit at the Old Stone House Museum in Brownnington. These particular photos show the Spates Block decades ago and shortly before it was torn down. Photo of the exhibit by Scott Wheeler

1948 Announcing the Opening Thursday
OF THE
SEGUIN MUSIC COMPANY
NOW LOCATED IN THE
MEADER'S FLOWER SHOP, NEWPORT

Musical instruments, new and used, saxophone and clarinet reeds, Gibson guitar strings, violin strings, etc.
Sheet music, popular and classical
Featuring Columbia Records, laminated for less breakage and better tone
Popular and classical albums, and singles, and children's albums
Instrument Repairs



Seguin Music Co., which opened in 1948, was an important fixture on Main Street for generations. It opened for business in the Spates Block. Bud Seguin, owner of the business, is seen here.

Photo courtesy of Jeff Seguin

down, and some of the facts the two Newport women have uncovered.

Distinctive Turrets

Many of the buildings on Main Street were in the French Second Empire style, which some people think of as Victorian, wooden buildings with multiple stories, a shop on the street and homes of the shopkeepers above.

The turrets were distinct—photographs show many turrets on Main Street on both sides. However, they were the first to be damaged in fires. While the buildings were sometimes saved, the turrets were not rebuilt. The buildings lost their tops and their architectural heritage. For example, there were turrets at the east corner of Central and Main and elsewhere down the street, to match the Goodrich and the others to the west.

Names Changed

One of the other interesting things about Main Street are the street names, changing over the years just the way Newport City's name changed. Newport City was once called Lake Bridge, Pickerel Point,



Downtown Lanes was partially located under the J.B. Police store with an extension built to the rear of the building to house the lanes. Photo from *Newport Celebrates*, a pamphlet apparently published by the city of Newport in 1968 at the celebration of the 175th year since the city was settled and 50 years since it became a designated city.

and Duncansborough. South School Street became Third Street. First Street became Coventry, and was called both for a time, according to some fire insurance maps. Seymour Lane was once Lake Street.

Main Street was once quite residential, becoming more commercial over the years, as shopkeepers lived and worked in their own buildings.

An Evolving History

The first building at Second and Main was built by Converse Goodrich in 1861, where he worked and lived. Dr. John Gaines bought it after Goodrich died. Frank Flint was the next owner and gave it the name Elizabeth Apartments after his daughter. Later owned by G. Oscar Lamothe, it had John Alberghini's grocery business, Emma Frances Ladies Ready-To-Wear Shop, and others. R. Hamblett bought it in 1948.

Next door, Samuel Horton built a home and stores in the 1870s. Horton's granddaughter married Ralph Hamblett in the 1910s. A succession of stores was there, from the Newport Grocery Co., to Nealy's Tot Shop, Nealy's Jewelry, Myers Jewelry, and The Treasure Shop. The Family Recipe was the last business there.

Further east, a building with a bakery sat, which Ralph Hamblett bought in 1916 and combined with the building next door to have groceries, bakery, and butcher shop. He produced his Lucky Bread in the building behind. It housed Newport's "first

The John B. Police store was located in the block for decades. This ad is from the May 11, 1934, issue of the *Newport Express* and *Standard*.

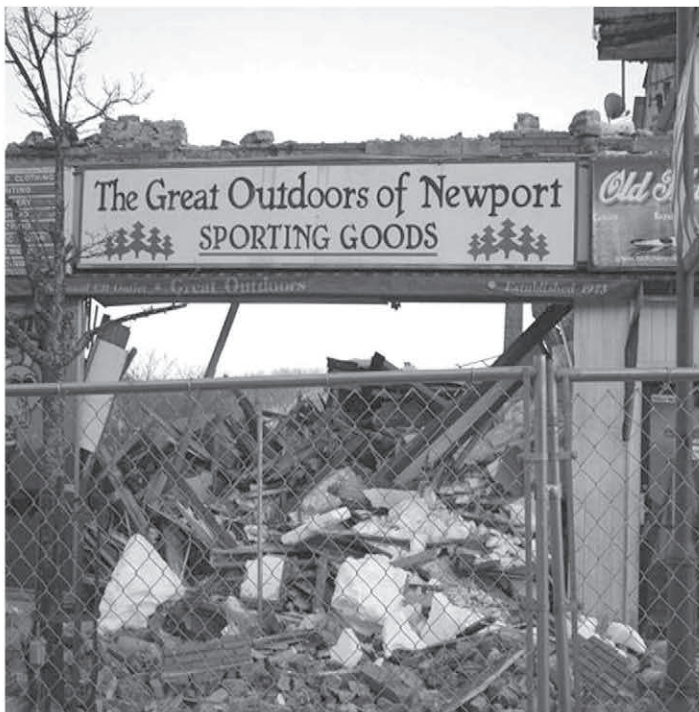
supermarket." The bakery building burned and Hamblett Inc. closed the retail business. (The chimney of the bakery stands to this day even after the demolition of the block.). There was the Franklyn Shop, Northland Sports, Ed Needleman's, and The Great Outdoors.

What is popularly known by many as the building where Seguin's Music shop was located was next door. There was a building in this location as early as 1885, likely a bakery. It went through a variety of guises, the Palace of Sweets being one of them, before becoming The Royal Cafe in 1930.

The sign on the next building said J.P. Police. This building, known in more modern times as the Police Block, was originally called the Arlington Block. In 1905, it had three stores. Gasper Borella owned a fruit store there. Searles Jewelry was there in 1916.

By 1919, it housed the Arlington Lanes bowling alley. The building changed hands in the 1920s and became the John B. Police store. In the 1950s and '60s, there was a jewelry store, and Beebe Bros. Men's Clothing. Later it was sold to the Fedele Bros. Inc. The last store in the block was Farrant's Flower Shop.

The corner building was the George Newland block. Built in 1883, this ornate three-story building featured two unusual multi-sided turrets and a small balcony out of a third-story window. It was referred to later as the Newland-Lapeer block, with C.M. Flint's large furniture store on the first floor. Mrs. M.A. Flint had her millinery and fancy goods business there. For many years the building had a pharmacy on the corner, featuring the names of Davis and Robitaille, Davis and Livingston, Livingston and Cook, and then Phelps Pharmacy. A fire in 1937 took the towers, although the building was rebuilt without them. Chouinard Shoe Repair was there in the 1950s and '60s.



In March, buildings and the memories they held came tumbling down. Photo by Paul Dreher



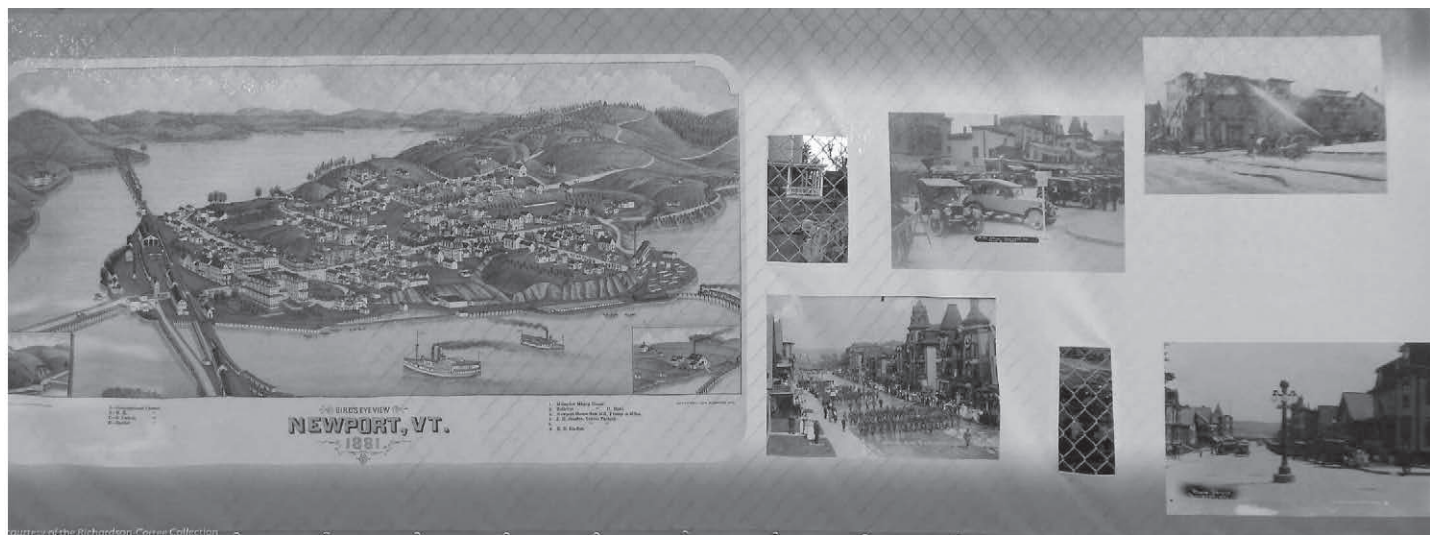
Jim and Mary McQuillen, along with their daughter, Kathy (not pictured), operated their business, Farrant's Flower Shop, in the same storefront in the Spates Block since August 1966. They were the last business in the block to close shop and move out as plans to demolish the block were finalized. The McQuillens departed Main Street last year following the Valentine's rush. They now operate their business as Farrant's Flower Shop and Greenhouse on Farrant Street in Newport. Photo by Scott Wheeler

As people who love history, McKenny and Pepin reluctantly acknowledge tearing down the block was probably the right thing to do, at least in the long run.

"The block was old and historic, but not so historic that any part of it needed to be preserved," Pepin said. "Some, maybe most, of those old



The work crew cleaned up the remnants of the block. Photo by Paul Dreher



Banners with historical photos of the now demolished block are hung on a chain link fence that now lines the sidewalk.

Photo by Scott Wheeler

buildings probably needed to be torn down to meet today's standards."

On the other hand, she said, "I regret that apparently it's going to be quite some time before anything new is going to be built in that space. So I guess I'm sad that the demolition happened so long before a new structure could be built in its place." The women lamented the changes that are occurring to Newport.

"It's a different world than I grew up in," Pepin said. "I remember ice boxes and the ice man coming, but you have to embrace change, but that doesn't mean the past isn't important, because it is."

"As a genealogist, I think people need to know how much we have progressed so we know where we are going, but change is difficult for a lot of

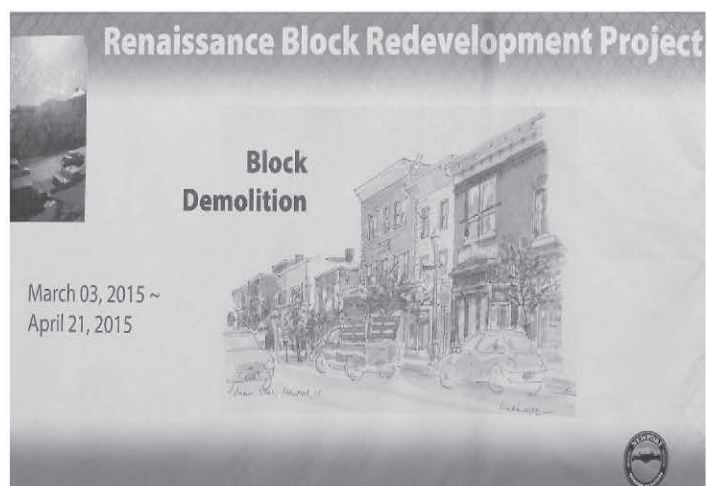
people," Sandy said. Knowing the past also helps people understand that Newport has continually changed, and it will continue to change well after those alive today are long gone.

What about the future of Newport?

"I'm a bit more optimistic than pessimistic," Pepin said. "Things change and we have to change with them or be left behind. I see some younger people coming forward with new ideas and energy. And of course, when, not if, the new AnC Bio building is up and running that should be a real shot in the arm for the area."

According to Stenger, construction of the Renaissance Block will begin in 2016. The building will include a mixture of retail and office space, along with high-end rental units. ■

Publisher's note: Robin Smith of Derby Line, a reporter with the Orleans County Record, contributed to this article.



This is another banner that hangs on the fence.

Photo by Scott Wheeler



According to Bill Stenger, construction of what will become the Renaissance Block will begin in 2016. This is the latest draft of how the block will look once completed.

Draft courtesy of Jay Peak Resort

ALPINE WEB MEDIA

Complete Web Design for all businesses

- Web hosting and email
- Online shopping carts, blogs and other features
- email newsletters

www.alpinewebmedia.com
(802) 233-3261

The Store with the Checkerboard Sign

CHECKERBOARD FEED STORES

Newport - Orleans - Barton

WE'RE DEAD FLY HEADQUARTERS

Let us solve all of your fly problems. We have researched, tested Purina sprays for every type of fly control. Make one stop here and get everything you need.

FOR COMPLETE OVERALL FLY CONTROL

Experience shows that the most effective fly control program includes spraying cattle and the interiors of all farm buildings housing animals. Purina Fly Spray for Farm Buildings and Stock Cattle does the complete job. It contains DDT — plus a new ingredient, V-15 (Chlorinated hydrocarbons) to make it even more effective. V-15 kills flies quicker than longer-lasting DDT... And sticks to barn walls and animals' hides, holding DDT longer.

with 

For DAIRY COWS at Milking Time

(Where Complete Program is not used)

When your cows are bothered at milking, spray them with Purina Dairy Spray. This efficient fly-killer contains no DDT, but it knocks flies down quickly and its killing effect lasts for many hours.



For INSECT CONTROL in the Home

(Kills Flies, Mosquitoes, Roaches, Ants, etc.)

Purina Fly Spray for the Home contains 5% microencapsulated DDT — finely pulverized DDT to cover more surface more thoroughly. Spray it into rooms for quick kill. Spray walls and ceilings, paint on screens, window sills — for effective protection.



This ad is from the May 9, 1947, issue of the *Newport Daily Express*.



Attention, Subscribers: If you should have an address change—permanent or temporary—please contact the *Northland Journal* with your new address as the *Journal* is mailed at a class that the U.S. Postal Service doesn't forward. This will help ensure uninterrupted mail delivery, and will prevent you from having to purchase issues that were not forwarded to you. Direct all questions to the Publishers, Scott and Penny Wheeler, at 802.334.5920.

Journey Back Into the History of the Northeast Kingdom



Vermont's *Northland Journal* is a monthly magazine dedicated to sharing and preserving the history of Vermont's Northeast Kingdom through the words of the people who lived it. It is delivered to subscribers in all 50 states. Each issue is filled with stories and photos of the

Northeast Kingdom from an earlier time. We also welcome our readers to submit their own articles for consideration.

Don't ever miss a copy of the *Journal*:

To subscribe to the *Northland Journal*, send a check or money order for \$25 (12 monthly issues), or \$45

(24 monthly issues) to Vermont's *Northland Journal*, PO Box 812, Derby, VT 05829. Prices are based on delivery in the United States. Or go to the *Northland Journal* website at www.northlandjournal.com to subscribe online.

We also offer an online version to the *Journal*, which proves particularly beneficial to those living outside of the U.S.

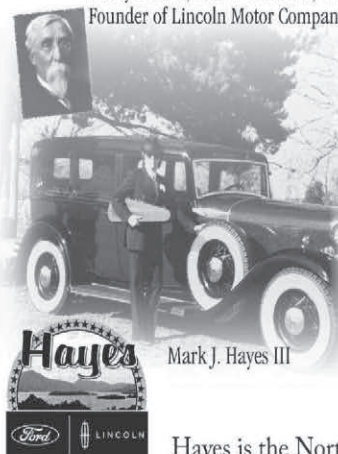
"An Authorized Ford Dealer has too much at stake to sell a car which will prove a disappointment"

Henry Leland, Native of Barton, VT
Founder of Lincoln Motor Company.

...so read a 1925 Ford advertisement in
The Evening Caledonian.

46 Years later Hayes Ford was
Founded in Newport Vermont
under that same principal.

Now 40 years have passed and we
are still your hometown Ford &
Lincoln dealer, proudly offering the
same certified guaranty.



Mark J. Hayes III

Hayes

Ford LINCOLN

Hayes is the Northeast Kingdom's only auto dealer that sells **both** New & **CERTIFIED PRE-OWNED FORD & LINCOLN** Vehicles. Lincoln's founder Henry Leland was raised in Barton, VT. We take particular pride in being the only Lincoln dealership to serve his fellow Northeast Kingdomites.

HAYES FORD LINCOLN

439 East Main St. Newport, VT • www.hayesford.com
802-334-6587 • 1-800-649-4770

Frog Run Family Reunion

by Mary W. Mathias

Last July there was a reunion of the folks who once upon a time called Frog Run Farm (FRF) in East Charleston, their home. The gathering included many local friends of the farm as well, all eager to see one another and to catch up on the news of the passing years.

FRF was a back-to-the-land communal farm and crafts center started in July of 1972, and disbanded amicably in 1987. The farm was spread out over 187 acres, with farmhouse and frontage on Route 105. By pooling our resources, the original dozen of us were able to afford the purchase price, acquire chickens, a cow, a team of horses, a sugaring operation, pastures and hay fields; and with a huge old barn in which to build a warren of rooms, to initiate a number of cottage industries—all in an effort to foster a sustainable lifestyle as far off “the grid” as possible. [Some of the history of the farm appeared in *Vermont’s Northland Journal* issues November and December 2013 and January 2014.]

There have been several FRF reunions, each notable, including this one, which celebrated 42 years since the founding. This year, not for the first time, we had the strange and wonderful experience of being able to hold a reunion in the place where we lived together, farmed and worked at crafts so many years ago, thanks to the present owner who



Frog Run Farm barn and house as they appear today.

Photos courtesy of Lucy Horton, Chris Carrington, and Sadie Collins

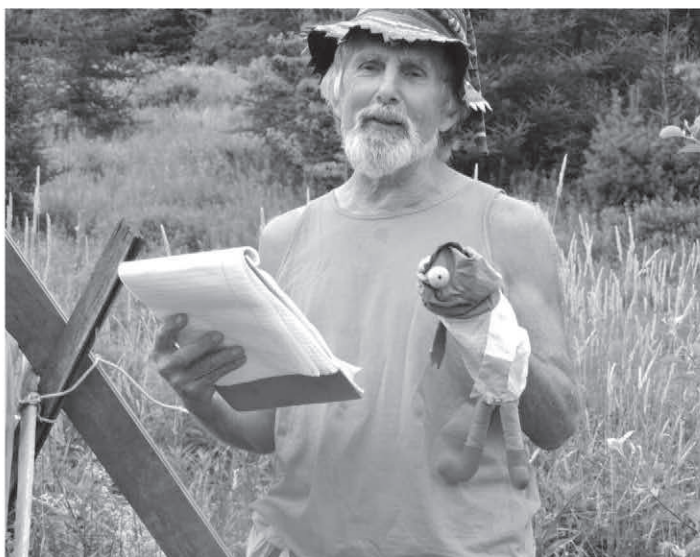
is, thankfully, a dear friend and supporter of the original FRF.

Anyone who has attended family reunions at a “home place” knows what it’s like to return to what they once took completely for granted as a

“forever home.” It can make us feel disoriented, because although the actual place is the same place, so much about it has changed that time seems to waver, recede, and race forward all at once. This may be one



A group of Frog Runners greets David X (in cap), who came back for the first time in 40 years. Jill, Sky, Dave, Heather, Rocky, David X, Mary, Lydia, and Lori.



Rocky, who now lives in Camden, New Jersey, is an actor and school teacher who often impersonates Walt Whitman. At the FRF reunion, he provided a hilarious puppet show that included stories from the farm history, and involved the children and the young at heart behind the scenes.

reason why there is a universal sense of mixed emotions about reunions.

For the very young, it's another summer party to enjoy time with other young ones, simply having a great time. For the middles and elders, we can be extremely glad for the chance to catch up with old, old friends and family, meet the new babies, grieve those no longer with us. We are filled with new impressions of people we haven't seen for years: how much they have changed! how much they are so unmistakably the same! And we are caught up in a flood of memories in the midst of the intense experience that the reunion itself provides.



Dave, Jared, David X, and Steve enjoy catching up.



Lydia, Chris, Lucy, Mary. Reliving younger, much younger days.

There is also an overwhelming sense of nostalgia, and yes, of loss. Especially if the gathering is to celebrate a particularly magical, special, or just plain happy part of our lives. We sometimes go into it thinking the reunion will allow us to recapture those special times, but in this, we are invariably disappointed. The best case scenario is that we, like the very young, can enjoy the festivities, the connections with old friends and new ones, and feel at the end that our life-path has been blessed by the years we were once together, and also by what has unfolded for each of us, life, so unexpected and so rich, in the years since.

The sample of pictures here commemorates such a gathering, in the spirit of celebrating the '70s, and sending best wishes to all groups that are having reunions this summer. ■



Sybillie Andersen CPM
Licensed Homebirth Midwife

133 Cottage Street, Newport, VT 05855 • 508 325 2953

sybillie.andersen@comcast.net

www.mountainlakemidwifery.com

Flashback to the Frog Run Farm Commune—1972 to 1987

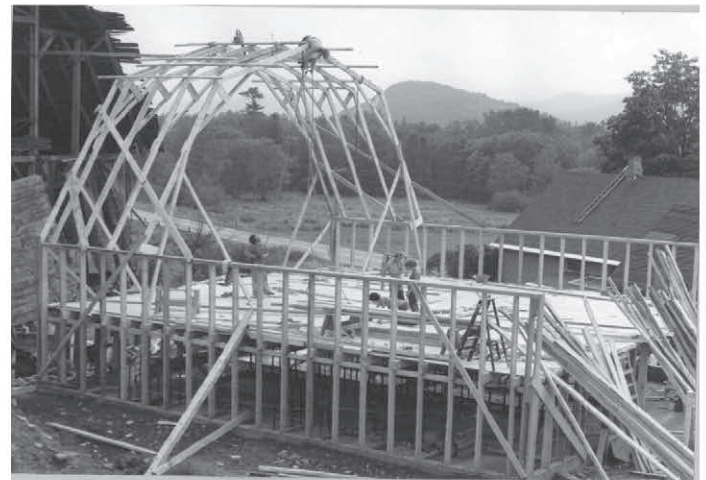


The Frog Run Farm commune was located on Route 105 in East Charleston from 1972 to 1987. This is a photo of the residents of the commune at the time welcoming the new team, Tom and Peggy, Belgian workhorses. Back row, left to right: Debbie, Simon, Kerry, neighbor, David M., Martha, Johnny, and Rocky. Front row: standing at left, Sky and Polly; at right are Patty, Mary, Ray, Sue, and a visitor.

Photos by Lucy Horton and captions by Mary Mathias



Below zero, early morning at Frog Run Farm, taken from the Clyde River.



The new barn going up in the shadow of the old barn in 1980.



Johnny spreading manure with Peggy and Tom.



Genealogical Queries Wanted

Please mail your genealogical queries to
Scott Wheeler, Vermont's Northland Journal,
P.O. Box 812, Derby, VT 05829



Spring cleaning day at Frog Run Farm. Taking a break, clockwise from front: Lydia, Polly, Lucy, Paul, Sky, Mary.



Sugaring: Polly fixing a bridle and bit, up in the sugarwoods.



The team is Peggy and Tom. Sky and Polly are bringing the collecting tank down to Grand Junction.

Old Stone House Museum 109 Old Stone House Road, Brownington, VT.

Events

- Fall Foliage Races – Sun. morning, Sept. 13
- Cheese & Apple Tasting – Sun., Sept. 27, 11 a.m.–3 p.m.
- The Mind of Alexander Twilight – Sun., Sept. 27, 3 p.m.
- Candlelight Harvest Dinner – Sat., Oct. 17, 6 p.m.

Classes

- Blacksmithing – Courtney Mead
- Taste of Blacksmithing, – Sat., Sept. 12 & Sat., Oct. 10, 9 a.m.–1 p.m.
- Make a Fire Rake – Sat., Sept. 5, 9 a.m.–1 p.m.
- Forge a Pair of Tongs – Sat., Sept. 5, 2–6 p.m.
- Herbal Remedies – Wed., Sept. 23, 6–8 p.m.
- Rug Braiding – Mary Ragano. Sat. & Sun., Sept. 19 & 20
& Sun., Sept. 27, 10 a.m.–2 p.m.



***Candlelight Harvest Dinner**
 Saturday, October 17, 6 p.m.

*Pre-Registration required.
 Phone (802)-754-2022 or register on-line
www.oldstonehousemuseum.org

Pre-register for classes at (802) 754-2022 www.oldstonehousemuseum.org
 Old Stone House Museum is open from May 15 through October 15,
 Wednesday to Sunday, 11-5 • Closed Monday and Tuesday
information@oldstonehousemuseum.org



Chris tending to sap in the arch pan.



Polly and Martha plowing with Peggy and Tom.



KIMTEK CORPORATION

MEDLITE TRANSPORT

FIRELITE TRANSPORT

KIMBALL W. JOHNSON
President

2163 VT Rte. 5A
Westmore, VT 05860

Toll Free: 888.546.8358
Fax: 802.525.3441

sales@kimtekresearch.com
www.kimtekresearch.com

Green Acres is the Place to Be on Beautiful Lake Willoughby!



GREEN ACRES CABINS

LAKE WILLOUGHBY, VERMONT

**Westmore, VT
802-525-3722**

GreenAcresCabins.net

DO YOU HEAR BUT NOT UNDERSTAND?
Why miss a word if you don't have to?

Try NEW Starkey Z Series™ wireless hearing aids today. The latest in hearing aid technology.

Z Series hearing aids lead the way in performance, comfort, personalization and connectivity.

CALL (800)-838-4327 TODAY, TRY IT RISK-FREE!*
LIMITED APPOINTMENTS AVAILABLE!



Z series

Preferred Provider of: 
Hearing is Our Concern™

HEAR BETTER LIVE BETTER

Armstrong's
BETTER HEARING SERVICE, LTD.

St. Johnsbury
198 Eastern Avenue
St. Johnsbury, VT
Monday - Wednesday
9 a.m. to 4 p.m.

Newport
328 Main Street
Newport, VT
By Appointment

(800)-838-4327



Deposit may be required. © 2015 Starkey. All Rights Reserved. 7/15 38061-15

LANDFILL GAS-TO-ENERGY IS

KEEPING YOUR LIGHTS ON

WITH RENEWABLE ENERGY

At Casella we believe nothing is garbage, everything has value. So, today we're conserving, renewing and turning your waste into clean energy.

To schedule a tour of our Landfill Gas-to-Energy landfill, please call **(802) 334-8300**.



Learn more at casella.com



Newport Natural



Market and Café

Browse the aisles of the oldest operating natural food store and café in the Northeast and find specialty foods and provisions, wine, beer, award winning cheeses and local products.

Then have a taste of Vermont in our eclectic café featuring a hot entrée and salad bar, daily soups, grilled and fresh sandwiches, a juice bar and smoothies, all freshly made.

194 Main Street, Newport

802 334-2626

Monday ~ Saturday: 8 to 6, Sunday: 10 to 4





A Pinch of This, a Pinch of That

by Theresa Perron-Janowski

I think I was around 12 years old when I headed off to camp. My cousin Valerie Benway Gaboriault went too, and we were going to Missisquoi Camp in Enosburg, Vermont. Gram and Aunt Blanche drove us there, we went through Smuggler's Notch, and it seemed to take forever.

When we arrived we settled into our bunkhouse and started to get acquainted with other kids and looked around at all the buildings that would be home away from home to us for the week. The food hall was big I remember, and there was a small camp store where we could buy candy. One of my fond memories was the bonfire at night and sitting around the fire singing "Kumbaya." I remember we went out into the woods and learned how to make a lean-to for shelter.

When I called Valerie to find out where the camp was located, she recalled the camp had a missionary come to talk to us; she was from India and was dressed in her traditional clothing that she described to us. Val also said we did a lot of arts and crafts. It seemed we both had had a good time.

At the end of the week Aunt Blanche and Grammie Perron came to pick us up. It was a long ride home, and we were exhausted. We pulled up to Aunt Blanche's home, and Valerie opened the door, fell to the ground, and kissed it! At first I thought she fainted, and Gram



"Camp Mom," Theresa Perron, at the Old Stone House Time Travelers Day Camp, teaches 50 campers how people once entertained themselves with music and a jig. Campers played the spoons, washboard and a pan. Two campers on the left are performing a jig.

Photos by Reeve Basom

wondered what was going on and let out a shriek. Valerie stood up and screamed, "Thank God I'm home," or something like that, and then she fell again and continued to kiss the ground. Everyone broke out in laughter—and just writing this makes me laugh out loud, especially when I remember her falling to the ground.

This week I was "Camp Mom." I worked at the Time Travelers Day Camp at the Old Stone House (OSH) Museum in Brownington. I was sort of the problem solver—from boo-boos to hunger. Along with the help of other adults, I needed to keep the camp running smoothly. At times I felt a bit lost, considering it was my first time around doing this camp, but managed, with the help of a good group of counselors and junior counselors, to get the job done. We could not have done it without them. They

were the kid "wranglers"; they got everyone to their classes and supported them there.

On the last day of camp I was asked to teach the children about music that might have been played in the 1850s. To add to the lesson, I decided to teach them how to play an instrument that I and a few of my sisters learned to play a long time ago—the spoons. My sisters and I could all sing quite well but none of us learned to play an instrument. So, we improvised and learned to play the spoons and a few other available kitchen "instruments" like the washboard and pots and pans. The camp kids had a good time playing, and some even tried their hand at a jig. My dad was the best jigger in town and was always asked to demonstrate his talent at family gatherings.

Reeve Basom, who grew up in Glover, designed the camp's



Basket-maker.

curriculum this year, and I asked her to give me a brief description of camp as she saw it. She said, “At the Old Stone House Time Travelers Day Camp, 50 campers spent a week immersed in the skills, stories and mysteries of 19th century Orleans County. Working with local artisans, these eight- to twelve-year-olds became weavers, basket-makers, decorative artists, woodworkers, and blacksmiths. Campers also dove into the lives of individuals who lived in Brownington between 1850 and 1870, using primary source research to uncover the stories of the community during this time, looking for clues at the Town Clerk’s office, in local cemeteries, in the exhibits at the Old Stone House, and in the museum archives. This research, along with an archaeological dig at the original location of the grammar school, was part of an effort to

discover why this building was moved down the road in 1869. The OSH plans to move this building back to its original site at the base of Prospect Hill.”

It was amazing how a handful of adults was able to make this camp happen, while Peggy Day, the OSH Museum Director, inspired and supported us in the direction that we needed to go. I was so impressed with such helpful, supportive staff coming together to make this a successful and fun-filled week for the kids.

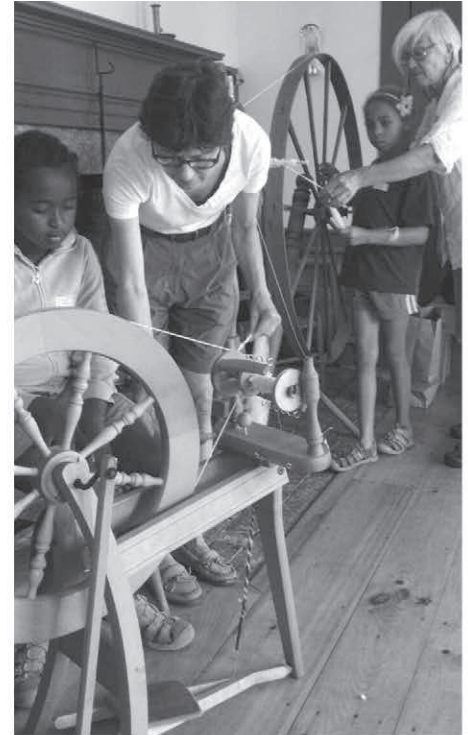
On the last day of camp, the campers put on a skit to share with their families what they had learned about the people who lived in Brownington in the 1850s. Then we had a potluck dinner and enjoyed one of the most delicious punches that I have ever tasted.

I asked Joan Huguenin about her punch and she had this to say:

“I have been recording since 1971 what I have put up from my



Woodworkers.



Weavers.

garden. It’s fun to look back and see what I have done over the years. I have been donating my rhubarb punch for years, to sell to benefit various organizations, for the Osher programs in Newport, and for any potluck or social gathering. I have always given out any recipes requested as I have gotten my best recipes from others. The rhubarb punch recipe came from my sister Marilyn Doherty Bennett of Mazomanie, Wisconsin. She must have sent it to me in about 1980 because I first recorded rhubarb punch in 1981 when I made about 10 to 12 gallons. When I asked Marilyn in recent years where she got the recipe she couldn’t remember. It may have been from the newspaper or from a friend. I just found the original copy she gave me in her own handwriting, and I find it is slightly different from

(Continued on page 38.)

sears

HOMETOWN STORE

3609 U.S. 5 DERBY, VT 05829

(802) 766-2411 Like Us On 

Locally owned by Richard & Jesica Counter



MOUNTAIN LAKE COTTAGES

1.800.757.3072

52-Old 5A, Lake Willoughby, Westmore, Vermont 05860

mntlakecottages.myfairpoint.net • www.vermontmountainlakecottages.com



PROTECT YOUR INVESTMENT

We Specialize In Log Home Maintenance

- Pressure Washing • Corn Blasting • Staining
- Caulking • Repairs/Restoration

Reasonable Rates — Over 40 Years of Experience



Josselyn's Sawmill, Inc.

306 North Road, Jefferson, NH 03583

toll free: 800.586.4507

local: 603.586.4507

www.josselyns.com

Bikes for all ages & abilities! **RENTALS!** **Accessories, Tires, Tubes**



WE REPAIR:

- Bikes
- Strollers
- Wagons
- Scooters
- Wheelchairs



Jeff Manning
Professional Bicycle Sales & Service

PayPal



Rte. 5, Newport-Derby Rd., Derby • 802-766-8009 • villagebikeshop@myfairpoint.net

Join us in stories, photographs, information, and just plain conversations about what is going on here in the Northeast Kingdom! *Vermont's Northland Journal* is on Facebook!

Canine Bed & Boutique

Dog Kenneling Services



Become One Of The Family

802.895.4431

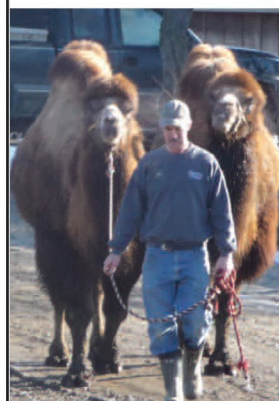
VT Route 111, Morgan, VT 05853



380 Heermanville Rd., Irasburg, VT 05845

802-754-9365

E-mail: tigger00123@hotmail.com



ALPACAS FOR SALE

Breeders, females, and/or fiber pets.

Come visit the alpacas, llama & camels while you shop for unique alpaca treasures!

Specials on 100% alpaca yarn,
100% alpaca rovings, alpaca socks, hats,
scarves, gloves, alpaca stuffed animals, stuffed
camels, 100% alpaca felted soaps (a natural
exfoliator), all natural bath salts, lip
balm, shower gels and lotions, and more!





North Troy – Wonderfully maintained and ready to enjoy! New metal roof and windows throughout. Spacious 5 bedroom, 2 bath home with separate living quarters in fully finished basement; perfect for guests or as rental income. Nice tree-shaded lot. Convenient to some of the best skiing and riding in the East. – Jay Peak! \$169,000. Travis Casey. #4417684



Troy – Charming 1880's farmhouse features the most amazing VIEWS from its 7.49-acre property. Elegance of old embraces modern updates to make this the ideal family home with a new 600 sq. ft. in-law apartment. Formal living and dining, wood floors, 3 baths and 4 bedrooms. Lush landscaping around the yard. Make it yours for \$229,900. Lyell Reed. #4425371



North Troy – Custom post and beam home on 81.9 acres. Hike the woods, enjoy the gardens or take a dip in the in-ground pool. Inside the almost 3,000 sq. ft. home you'll find a chef's kitchen, multiple living areas, exposed beams, master suite with private balcony, additional 3 bedrooms, wine storage, and so much more. Motivated seller! \$495,000. Nick Maclure. #4333206



North Troy – Fabulous 950-acre estate boasts, all contiguous, 3 miles of Missisquoi River frontage, 600 acres mature woodlands, 300 acres tillable, and borders Big Falls State Park. Certified organic farm. Family friendly home includes 3 bedrooms, 3 baths, great room, in-ground pool, 2-acre pond. Truly a rare find! Contact Dan Maclure for more info. #4250121



Troy – Woods and level farmland on this 290-acre parcel, all contiguous. Presently used for beef, this would also be good for horses, sheep or goats. Property includes a barn and a pond. There is a 1.8-acre farmstead reserved to build a home. Great opportunity if you're looking for additional acreage for your herd. More land is available. This 290 acres is offered at \$695,000. Bruno Marquis. #4401581



North Troy – Updated 2-unit has potential for third unit. Many updates have been done including roof, windows and vinyl siding. Currently offers 8 bedrooms, 3 baths, gas fireplace, and an attached 2-car garage. Good location, only minutes from all the activities at Jay Peak, and near VAST trail. Many possibilities. \$99,000. Connie Isabelle. #4398450



Leading the way in the Northeast Kingdom

802.334.1200 • 800.273.5371 • 802.626.4222

5043 Rte. 5, Derby Road, Derby, VT • 234 VT Rte. 114, East Burke, VT
info@farmandforest.com • www.farmandforest.com

Visit us online to view our entire inventory, meet our agents or browse the MLS!



*Traditionally Italian
done uniquely in Vermont*

NEW • NEW • NEW
Fantastic and Affordable
ALL-YOU-CAN-EAT Specials!

www.vtpiecompany.com



- Full-service bar
- Wide selection of wine
- Daily lunch specials
- Wood fired pizza

802-334-7770 4278 US Route 5, Derby, VT 05829



Wednesday night is Trivia Night 7 to 8 p.m.
Test your knowledge while having a great meal.

Lots of prizes!

Open for lunch and dinner:

Tuesday – Sunday 11 a.m. to 9 p.m.

Friday and Saturday 11 a.m. to 10 p.m.





Joan Huguenin.

what I do. It calls for the juice of one lemon or one orange. I must have juiced an orange and measured it because the recipe I give out calls for 1/3 cup of orange juice. I have never tried it with lemon. The original recipe also says to add 1 quart of 50-50 Sprite (or something similar) to the finished punch, and I have done this, but prefer the punch without it.

"I prefer to use red rhubarb, but the green probably tastes the same. It is just that the red rhubarb makes a pretty pink punch. Once I made the punch with green rhubarb and it was a sickly green so I added red food color. I have red rhubarb at my house in Brownington and also pick it at the Eaton House part of

the Old Stone House Museum property. Also, Laurence and Barbara Thompson have planted extra rhubarb for me.

"Some people say they cut the rhubarb stalks. I always pull the stalks. I don't know if I read somewhere to do this. Sometimes I do pull up a root and what I try to do is replant any roots I pull up and they usually take just fine. My feeling is that when I pull the stalk I am telling the plant to put out new stalks. I don't know if it is true, but I like to think so. I have read and been told to cut off the flowers when they appear in the spring. They don't seem to put out flowers later in the season. I have never known why to cut off the flowers, but do it as soon as I see them, even before they open.

"I have also read that one should put horse manure on the rhubarb patch, preferably in the early spring. I have done this a few times but usually don't, and the rhubarb seems to thrive without it. Laurence Thompson, who has the largest rhubarb I have ever seen, used to get horse manure at the fairgrounds in Barton so maybe that is why his rhubarb is so large. "I pick rhubarb from about mid-May till as late as mid-October. The earliest I ever picked was April 30 when we had an early spring in 2012. I was only able to make one gallon, but made another 6 gallons in the next week. I guess I was desperate for punch to take to the Osher program that week, having used up my stockpile from the freezer. "The most I have ever made was 84 gallons in 2010. The last few years I have been averaging about 70 gallons. I have made 27

gallons so far this year and feel I am behind. When I have the time to pick a lot of rhubarb I will make 12 recipes which makes about 4 gallons. I use a 6-quart kettle and fill it twice with rhubarb and fill it twice with water. Once it is cooked and strained I add 9 cups of sugar and 4 cups of orange juice. It probably takes about 4 hours. I put the punch in various containers from 1 cup to 1 gallon. If I have leftover punch after an event and it is still good and cold I refreeze it and it is fine. It's great fun to introduce people to my rhubarb punch. At almost every event I find people who remember the punch from previous years, and I also make new friends."

Joan's Rhubarb Punch

1 quart rhubarb, washed and cut in 2-inch pieces

1 quart water

Simmer till tender.

Strain through a sieve.

To the liquid add:

3/4 cup sugar

1/3 cup orange juice

I freeze the punch and thaw it as needed. I leave some of the punch partially frozen. I pour off the liquid and shake the frozen part till it's slushy or use a fork to break it up in little pieces. It keeps the punch cold and icy, which is especially nice for a picnic. ■



(Continued from page 3.)

Every month for the past 13 years, Wheeler has churned out a new collection of stories from the region's past or from the pasts of the people who live there now.

As for Mark's comment about the *Journal* being a "successful publication," that depends on how one looks at it. If I base success on amassing a financial fortune, then I'm a dismal failure. However, if I base success on believing in the honorable mission of the *Journal* and knowing it touches many lives, then yes, I consider it a HUGE success.

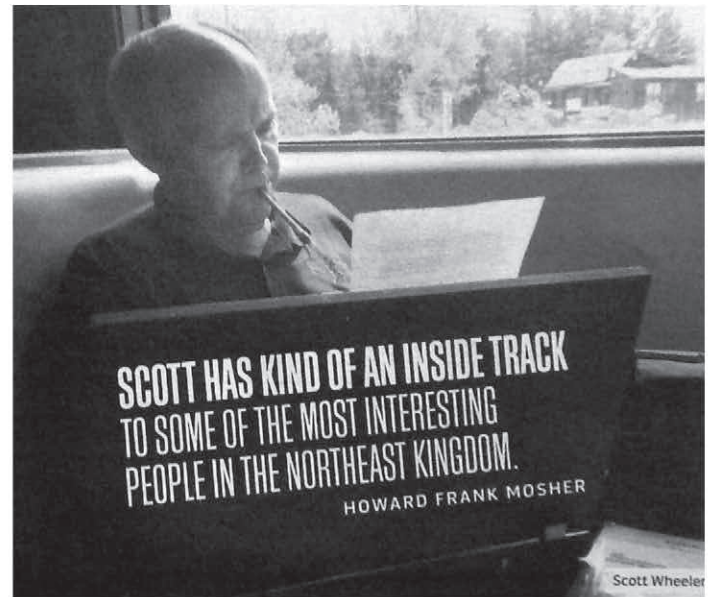
Here is another excerpt from Mark's article:

"Stories abound out there," Wheeler said.

It's clear how he gets them. Even when he's off duty, Wheeler is on. Almost everyone gets a hello. He concedes that a trip to the grocery store can take hours, and it's hard to miss the 5-foot-5 dynamo in blue jeans and a scarlet windbreaker emblazoned with the Northland Journal logo. [I'm actually 5-foot-7, but I have shrunk a bit over the years so I'm sure I'll eventually be 5-foot-5 again.] He chats up waitresses and passersby, often leaning forward as if he were a politician campaigning for votes, which he once was: Wheeler, a moderate Republican, spent two unremarkable terms in the Vermont legislature before stepping down in 2010.

Yes, I think Mark wrote a mighty fine article, but if there is one additional thing I would have liked to have had included it is that the *Journal* is far from a one-man show. (I don't blame Mark for not including it because he only had so much space for the article.) My wife, who works a full-time job in addition to her behind-the-scenes role with the *Journal* (she has no desire for the spotlight), has been integral in the business every step of the way. There is no way I could have done this without her. Then there is my tiny team of believers (workers), which now includes our daughter, Emily. Our team sticks together through good times and bad, and gracefully tolerates my sometimes disorganized way of doing business. I can't thank them enough for their work and dedication. Each one of them loves the Northeast Kingdom as much as I—past, present, and future.

It's also great to see a growing number of talented writers and people who have never been published submitting their works. Also, thanks to our



readers, advertisers, and businesses where the journals are sold or distributed, for their support.

So, it might be true, I just might be crazy, and the *Journal* may have been an insane idea, but I'm sure having fun playing a role in preserving the history of the Northeast Kingdom while giving folks a voice, particularly our seniors. It's a forum that allows them to share their memories. Thank you, everybody, for joining my wife and me on this ride.

To read Mark's entire article, check out the *Seven Days'* website at www.sevendaysvt.com.

Thank you everybody ■

Pope Memorial Frontier Animal Shelter

4473 Barton Orleans Road, Orleans, VT 05860 • 802-754-2228

Pope Memorial Frontier Animal Shelter hosts a feline spay/neuter clinic once to twice a month. Cost is \$45 and includes a rabies and distemper vaccine. For more information, call Betsy at 802-334-8197 and leave a message to secure your space and obtain paperwork.




Peanut is a petite little cat. She is a sweet friendly cat searching for new forever homes. Peanut appears to be a calm affectionate and loves treats. Peanut is in a community cat room and does not mind the company of other cats.

Pope Memorial
Frontier Animal Shelter, Inc.



Adoption Hours:

Tuesday, Wednesday & Friday 1 to 4
Thursdays 2 to 6
Saturdays and Sundays 12 to 3



2015+16

JAY PEAK SEASON PASSES

JAY PEAK ONLY PASS

Adult prices from

\$779

JAY PEAK
ONLY

New **129**

YOUNG ADULT SEASON PASS

for 19-29 year-olds

\$559

JAY PEAK + Q BURKE
MOUNTAIN RESORT

THE JUDGE COMBO PASS

Adult prices from

\$899

JAY PEAK + Q BURKE
MOUNTAIN RESORT

MUST PURCHASE BY OCTOBER 12, 2015

PURCHASE YOUR PASS
jaypeakresort.com/SeasonPass



JAY PEAK
VERMONT