

# Stain-less Elements

## Product Specifications

**Cavalier**  
CARPETS

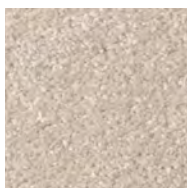
<b>Construction</b>	Cut Pile Tufted
<b>Pile Content</b>	100% Polypropylene
<b>Gauge</b>	31.5 / 10cm, (1/8th)
<b>Yarn Weight</b>	1525g/m <sup>2</sup> , 45oz/yd <sup>2</sup>
<b>Total Finished Weight</b>	2400g/m <sup>2</sup> , 70oz/yd <sup>2</sup>
<b>Suitability</b>	Extra Heavy Domestic/Heavy Contract
<b>Width</b>	4m & 5m
<b>Pile Height</b>	9.5mm
<b>Backing</b>	Secondary
<b>Tog Rating</b>	1.55
<b>Light Fastness</b>	BS: 1006(1-8) 5-6
<b>Flammability</b>	EN13501-1:2002 - Class Efl S1



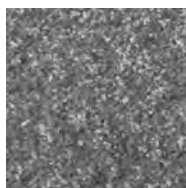
**Standard Colours** Due to variation in raw material bulk dye, matching may vary slightly from the colours shown on the standard shade card.

All specifications subject to normal manufacturing tolerances.

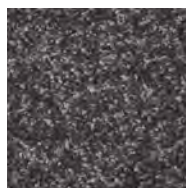
Cut-pile carpets, may show shading/pile reversal. This tendency is inherent in all cut pile fabrics and is not detrimental to the wear of the carpet. It cannot be considered a manufacturing defect. It should be noted and taken into consideration when selecting colours that darker shades camouflage soiling more than lighter shades. This applies particularly to contract installations.



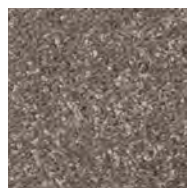
Argon



Boron



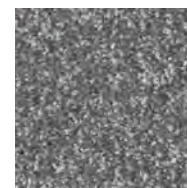
Carbon



Iron



Lead



Mercury



Neon



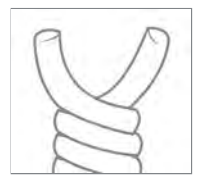
Nickel



Oxygen



Silicon



2 Ply Yarns

- Bleach Cleanable
- Fashionable Plain Colour Palette
- Stain Resistant Polypropylene Yarns

