

Stain-less Twist

Product Specifications

Cavalier

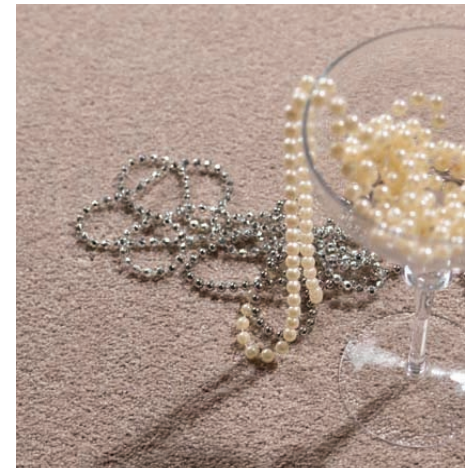
CARPETS

Construction	Cut Pile Tufted
Pile Content	100% Polypropylene
Gauge	39.4 / 10cm, (1/10th)
Yarn Weight	1150g/m ² , 34oz/yd ²
Total Finished Weight	2150g/m ² , 64oz/yd ²
Suitability	General Contract
Width	4m & 5m
Pile Height	6.5mm
Backing	Secondary
Tog Rating	0.80
Light Fastness	BS: 1006(1-8) 5-6
Flammability	EN13501-1:2002 - Class Efl S1

Standard Colours Due to variation in raw material bulk dye, matching may vary slightly from the colours shown on the standard shade card

All specifications subject to normal manufacturing tolerances.

Cut-pile carpets, may show shading/pile reversal. This tendency is inherent in all cut pile fabrics and is not detrimental to the wear of the carpet. It cannot be considered a manufacturing defect. It should be noted and taken into consideration when selecting colours that darker shades camouflage soiling more than lighter shades. This applies particularly to contract installations.



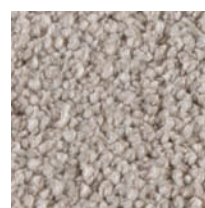
Crystal



Diamond



Garnet



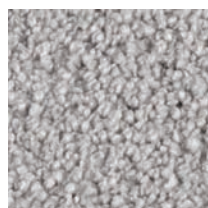
Gemstone



Hardstone



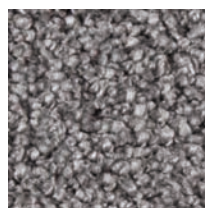
Lapis



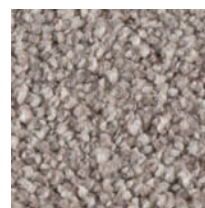
Mineral



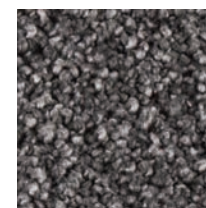
Obsidian



Pyrite



Quartz



Tourmaline



- 4m & 5m Widths
- Eleven Contemporary Colours
- Practical Stain Resistant Carpet

