

# The Sage Sentinel

Published Weekly by H.E.W. Employees Association. Not To Be Mailed or Taken From the Area.

VOL. 2, NO. 3

FRIDAY, DECEMBER 22, 1944

HANFORD, WASHINGTON

## Seasons Greetings

### TO ALL H.E.W. EMPLOYEES:

This Christmas will be our fourth Christmas at war; our second Christmas at Hanford. Our armed forces with those of our allies have turned the tide of the war with munitions supplied by greater forces of civilian workers and with the War Bond income contributed by both groups.

We sincerely pray that next Christmas we may be back in our homes with our servicemen and women, our families reunited, the war only a memory, and our efforts concentrated on making our own country and our own community a better place to live. Our continued efforts to support our government in its war efforts will hasten the day of peace.

We at Hanford have done a big job in the past. There still remains much to be done. Our constant attention to duty, constant effort to do our job faster and better, constant support of our War Bond drives; these should be our Christmas Gifts to our Uncle Sam.

The spirit of the Army, of civilian workers at Hanford fills me with pride and makes me confident of the ultimate success of our mission.

To each of you a sincere Merry Christmas and a Happy New Year, a year in which you can continue to feel proud of your part in our country's great effort.

F. T. MATTHIAS, Col., C. E.  
Area Engineer

Christmas this year will be our fourth during the present war. It is our hope that you feel as sincerely as we do that the work done on this Project will help to make this our last Christmas during war time.

With the wish that this will be a happy holiday season and that the coming year will bring victory for the United Nations and peace throughout the world—we say Merry Christmas and a Happy New Year!

G. P. CHURCH  
Field Project Manager

## Entertainment for Hanford Christmas Week Festivities

Christmas weekend—with its climax on Monday, Christmas Day itself—continues the round of entertainment that will carry on through the New Year. There will be something doing every day, with the calendar billboard at the corner of First Street and B Avenue giving the day-by-day changes.

Last week's activity included entertainment from the University of Idaho, a fast Basketball Tournament of local teams on Tuesday, Bingo at Mess Hall No. 2—with prizes for the winners, the lovely Esquire Girls at the Auditorium on Thursday, a bang-up show put on by Kay Kyser and his gang, plus two nights of dancing to Ted Weems' Orchestra.

Variety was the keynote of this week's programs. Included were local and professional shows in the Auditorium—the Monday night Boxing bouts and the London Circus among them.

Every night during the three-week Christmas celebration, Barracks 11-A, the Recreation Huts, Youth Center and Recreation Buildings 201 and 254 are holding Open House, special activities, games, music and decorations being provided.

But tonight starts off entertainment activity that will outshine the last two weeks' events. And the whole program of holiday entertainment will continue through New Year's Eve on the 31st. The program from here on out:

### TONIGHT

Marking the last performance of the four-night stand of the London Circus, the colorful acts will go on tonight from 8:30 to 10:00 in the Auditorium. Then, for the residents of Barracks Area 200, pool, checker and ping-pong tournaments will make up the evening's activities at Recreation Building 201.

### TOMORROW

A return engagement of Henry King and his famous orchestra will play for the dancing in the Auditorium starting at 9:00 p.m. for the first in his four holiday visits to the Project. For the youngsters, there will be a Christmas Party in

the morning starting at 9:00 and continuing until noon. In addition to a surprise from the stage, a free movie, "Mrs. Wiggs of the Cabbage Patch," will be shown. Recreation Building 201 will see Open House activities, a pool tournament and a dance from 9:00 p.m. to 1:00 a.m.

### CHRISTMAS EVE

A concert by the H.E.W. Band will be given in the Auditorium at 3:00 p.m. Rev. Ellis Marshburn will read the scriptural story as the Nativity is unveiled on Kadlec Plaza at 7:45. Caroling is to be led by the United Church choir. Major activity of Christmas Eve will be a pageant—an adaptation of Henry Vandyke's "The Other Wise Man", which will be presented at 8:30 p.m. preceded by a half-hour of sacred Wagnerian music. Four tableaux with pantomime are planned, with characters in costume. Taking part in the pageant will be the following Project employees: Bob Lunceford, Fred Addie, L. L. Whitner, Ernest Coleman, Harrison Hodges, Katherine Biederfeldt, Patty, Blake Miller, Mina Miller, Paul Clark and others. Christmas Eve celebration at Recreation Building 201 will be preceded by a Children's Santa Claus Party at 1:30 p.m. and a quiz contest at 3:00 p.m. Carol singing and bingo will be the early evening entertainment, while a costume dance is planned for 9:00 p.m.

### CHRISTMAS DAY

Movies at the Auditorium in addition to recordings of Handel's oratorio "The Messiah" is the Christmas program in the afternoon. But the evening will bring the climax of the weekend activities with Henry King's Orchestra playing a dance from 8:30 p.m. to 12:30 a.m. High point of the day will be the Free Christmas Dinner for employees at the Mess Halls in the evening. For procedures at the holiday dinner, see story on this page. Other activities for Project employees will be the Recreation Building 201 quiz contest, pool tournament, bingo and dance.

### TUESDAY

Main activity of the day following Christmas will be the basketball game between a Hanford All-Star team and the University of Washington. The usual activities at the Recreation Centers will also be going on.

### WEDNESDAY

Mid-week brings two big activities—the Bingo Party (free prizes) at Mess Hall No. 2 starting at 8:00, and a combination dance with both Lindy's Orchestra and Barn Dance Ramblers giving out. Pool and Bingo will be the main features at Recreation Building 201.

### THURSDAY

This day will feature an evening Vaudeville Show in the Auditorium, while in the Recreation Centers the usual activities will be stepped up.

### DECEMBER 29

Another collegiate basketball game is scheduled a week from tonight in the Auditorium.

### DECEMBER 30 AND 31

Henry King's Orchestra returns for dances next weekend—on both Saturday and New Year's Eve. Saturday and New Year dances are also on tap for Recreation 201.

## Hanford Employees Dinner Guests Monday

With all Project Contractors and the U. S. Army Engineers as hosts, H.E.W. employees in Hanford will be guests Monday at the annual Christmas Day dinner.

Plans for the special feast call for a souvenir program, and a special menu, as given below. Because of the more elaborate afternoon meal, service will necessarily be somewhat slower, and patience of the guests is asked.

### The Menu

Christmas dinner will consist of: chilled tomato juice, roast young turkey, giblet gravy, belle isle dressing, whipped Idaho potatoes, candied yams, golden bantam corn O'Brien, creamed new peas, cranberry sauce, iced celery hearts, dinner rolls, butter, mince pie and holiday ice cream, fruit, coffee and salted nuts.

To avoid misunderstanding regarding the Christmas Day dinner, procedures for guests are repeated below:

In order to give the maximum service to patrons, it is planned that employees who are not working Christmas Day and who are

bringing their families or guests to dinner will eat in Mess Hall No. 3. Mess Hall No. 4 will be reserved for those persons working Christmas Day in order that they may not be inconvenienced in any way. Persons working on Christmas Day will bring their families or guests to No. 4 Mess Hall. Special Christmas day passes will be issued through Supervision for both the breakfast and supper meals so that no one except those entitled to eat in No. 4 Mess Hall will be admitted. Holders of guest tickets will be admitted to No. 4 Mess Hall only when accompanied by employees having a special Christmas Day pass. All other guest ticket holders will be expected to eat in No. 3 Mess Hall. Guest tickets will not be accepted in No. 1 Mess Hall. Regular December odd shift meal passes will not be good in No. 4 Mess Hall until after 10:00 p.m. Christmas Day.

### Serving Hours

No. 1, 3 and 5 Mess Halls will serve a normal breakfast from 8:00 a.m. to 11:00 a.m., and the special Christmas dinner from 3:00 p.m. to

8:00 a.m. only for those persons working Christmas Day. Dinner will be served from 1:00 p.m. to 8:00 p.m. for those employees holding special Christmas Day passes. No. 4 Mess Hall will reopen at 10:00 p.m. for regular odd shift feeding.

### Withholding Tax Forms Due at End of Week

Two days remain for return of the Employee's Withholding Exemption Certificate, it was emphasized today by the Time Office.

Officials pointed out that if the filled out forms are not returned by Sunday, employees will have full withholding tax deductions made from checks with no exemptions allowed unless this form is received before preparation of wage checks for the new year.

The completed forms are to be deposited in the clock card boxes.

## Lose Priority For Smokes?

With a cigarette priority far higher than that of surrounding communities, uneasiness was expressed this week at H.E.W. that the privilege might be revoked if it continues to be misused.

### Unfair Shortage

Investigators, it was reported, have found that some workers on the Project have been making the rounds of several stores once or twice daily to buy up several packs of cigarettes—one at a time. Although technically within the letter of the regulations which permit the purchase of single packs, it was pointed out that this practice creates an unfair shortage for others living on the Project.

### May Lose Priority

Authorities warn that if such violation of the privilege continues, H.E.W. will lose its priority and be put back on the same basis as the rest of the civilian population—whose ration makes it impossible to buy any of the standard brands of cigarettes with regular frequency.



# The Sage Sentinel

Editor \_\_\_\_\_ Helen D. Wiederrecht  
Vol. 2, No. 3 Friday, December 22, 1944

Editorial suggestions and contributions should be sent to the Editor, Training and Relations Building, handed to your foreman, supervisor or placed in suggestion boxes. Deadline for copy is one week previous to publication. Phone Extension 5.

Copyright 1944 by Hanford Engineer Works. The information contained in this publication shall not be communicated to the press. Requests for permission to reprint any or all contents must be made in writing to the Management, Hanford Engineer Works, P.O. Box 429, Pasco, Washington.

## For These Things We Work

There will come a V-Day to all fronts—not soon, perhaps, but one day the noisy tremors of a world at war will subside. And again we shall live with dignity and pride in the triumph over tyranny. As another Yuletide draws near, hope is strong among H.E.W. men and women that this promise of new life may not be too far away—and the things for which we and all civilized people work.

## Down That Chimney?



Even the littlest Hanford residents find Christmas fun at H.E.W. But skeptical Peg Jones, three-year-old youngster of Jane Jones, Employees Association, wonders if Santa Claus can make the trip down the chimney of the fake fireplace (above).

## BUY MORE WAR BONDS

## Give Income Tax Service

Starting next Tuesday, the Information Service Office in the Training and Relations Building, Hanford, and the Area Personnel Office in the basement of the Old High School Building, Cullum Street, Richland, will be prepared to assist construction employees to compute their income tax estimates for the fourth quarter.

### Office Hours

For the convenience of construction workers, the Hanford office will stay open until 8:30 p.m. Monday through Saturday and the Richland office will stay open until 8:30 p.m. Monday, Wednesday and Friday nights, starting next Wednesday. Both offices will be open for income tax consultations for construction shift workers or members of the families of any construction workers after 11:00 a.m. every week day.

The law requires that every person whose annual income exceeds \$2,700 and every married couple whose total family income exceeds \$3,500 shall make a quarterly estimated return. Many H.E.W. employees have not made such returns previously, due to the uncertainty of their earnings for 1944. All such taxpayers are required to make this fourth quarter estimate. The income tax consultants need to have accurate figures totalled of the amount of money earned by all members of the family in 1944 and the amount withheld by employers for income taxes during that period. It is not necessary to provide totals of the amount held out of paychecks for Social Security, the deduction marked F.O.A.B.

### Estimate and Finals

Although the deadline for filing estimates has been extended to January 15, the number of consultants available to help taxpayers figure their estimates is limited, so it is requested that everyone try to have his taxes figured as early as possible to avoid last minute congestion. Those who wish to may make a final return for the full year instead of making a fourth quarter estimate, provided the return is mailed before January 15. Otherwise the time limit for final returns is March 15, as in previous years. Forms for final returns will not be available until the new year, when full details will be published of the procedure for getting assistance.

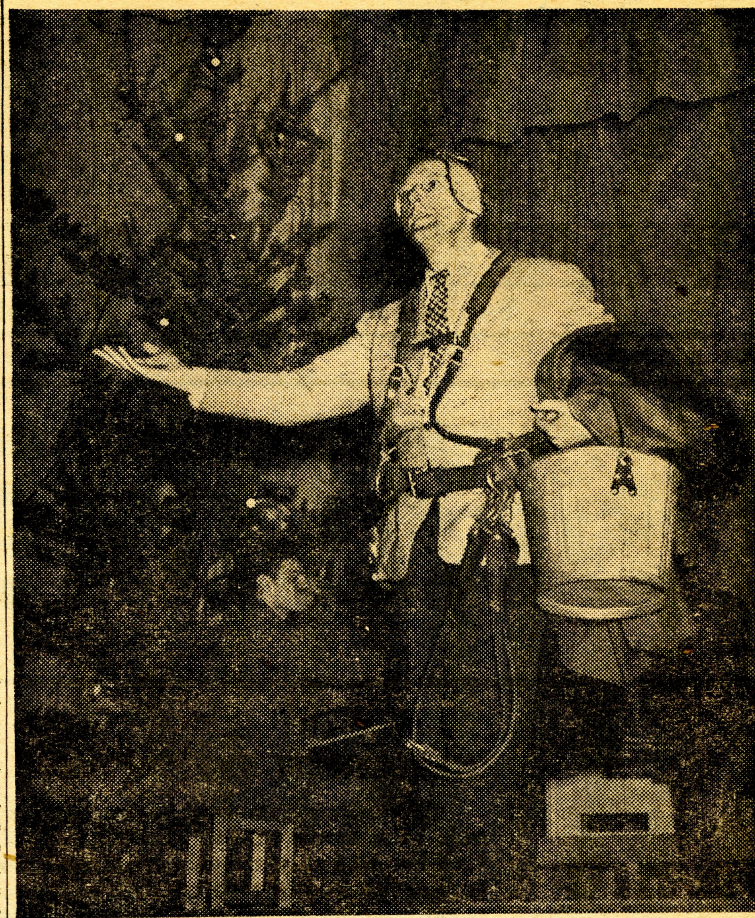
### Christmas on the Desert

A hush falls o'er the desert,  
The stars seem bright and low,  
The winds sing through the sagebrush,  
A song of long ago—  
A song that came from Heaven,  
Of love that will not cease—  
A song from lips of angels—  
"Goodwill toward men—and peace."  
—Contributed

San Francisco — The Japanese emperor's own cherry trees are on their way toward becoming war casualties.

Radio Tokyo says the home island's shortage of charcoal—needed for fuel—makes necessary the felling of 50,000 cherry trees from the stock farm of the imperial household department.

## Kay's S. T. A.



Kay Kyser remembered S.T.A. as he cavorted about the stage in last Friday's big show. Here he wears winter ear-muffs and safety belt as he convulses the crowd with another wisecrack. Switching suddenly from gags to complete sincerity, Kyser concluded his program with a plea to each worker to stay on the job here at Hanford. "The whole job can be no more complete than each individual part," he warned. "Tell yourself 'I am important!'"

## BUY MORE WAR BONDS

*Merry Christmas*

GIVE A WATCH CERTIFICATE FOR A  
BULOVA OR GRUEN WATCH

At

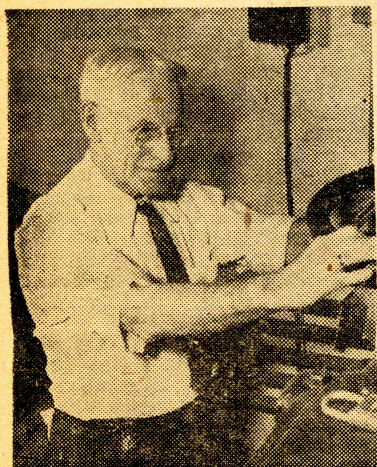
**WEISFIELD & GOLDBERG'S**

JEWELERS

MAIN SHOPPING CENTER

HANFORD

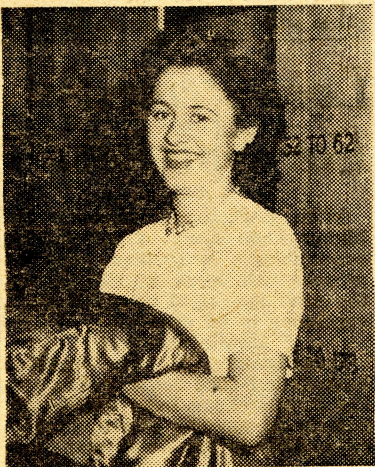
## QUESTION OF THE WEEK: What Does Christmas Mean to You?



**Robert Q. MacMahon**  
Cost Department

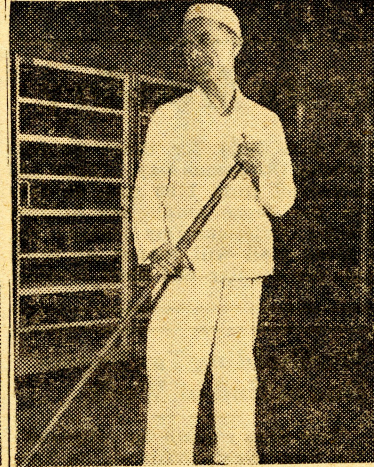
Nearly thirty years on the spot makes "Mac" a real authority on Hanford Christmases. This Cost Department man first came to this territory as a fruit rancher, and later worked at fruit processing in Yakima.

When quizzed about the local weather, "Mac" admits that it can't be forecast accurately. "We have had snow for Christmas, but you just can't tell if we'll get a white Christmas."



**Dortha Smart**  
Traffic Department

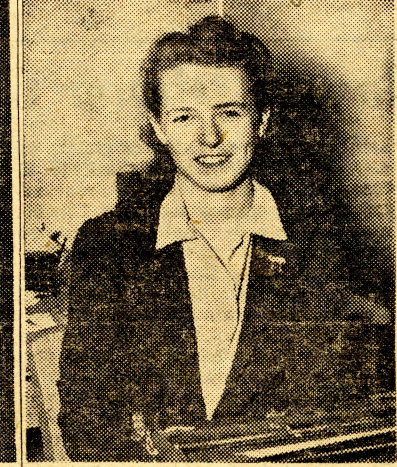
Photographed as she efficiently checked wraps during one of the Christmas programs, Dortha isn't minding her first Christmas away from home. "I'm frankly too busy," says this native of Monett, Missouri. "I've done everything from selling tickets to helping the circus along." A clerk in Traffic, Dortha has spent extra hours helping to put the holiday activities over successfully, taking time out to attend all the basketball games—her favorite part.



**Leon Delpierre**  
Olympic Commissary

"Fine, fine!" is "Frenchy's" opinion of Christmas on the Project. A favorite of all employees at the Olympic Sandwich Shop, Delpierre acquires his nickname from the fact that he was born in Calais, France. His is the job of keeping the shop spotlessly clean.

Coming more recently from Novilla, Iowa "Frenchy" has had forty-eight years experience as a coal miner, but is quite happy at Hanford.



**Barbara Glass**  
Employee Relations

Wistfully thinking of home during her first Christmas away, Barbara, government secretary, can remember merrier times. Back in Evanston, Illinois, the Glass family holds open house every Christmas Day, with all their friends and relatives invited. "The worst thing that ever happened," Barbara remembers, "was when everybody gave my brother white shirts, beautiful ties and plaid socks. On January 1 he was drafted."



**Arthur E. Fielding**  
Labor Department

"I like it fine!" says Fielding of his first Christmas in Hanford. "I've seen some swell programs, and I'm well pleased."

A World War II veteran, his major interest is in his former Infantry division which is now getting in some telling blows on German territory.

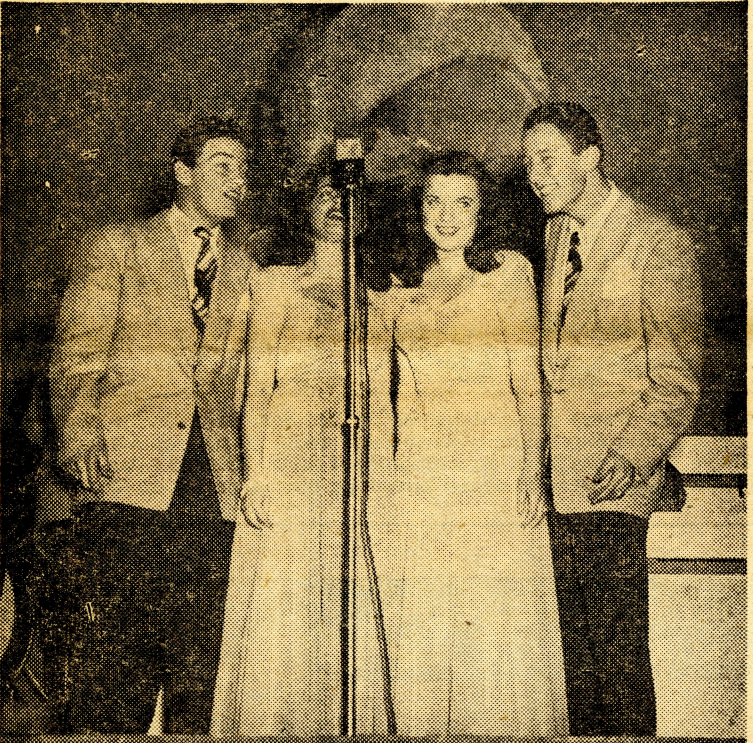
Fielding comes from Philadelphia, via Camp Attebury, Indiana, where life was okay—but not to compare with Hanford, he says.



## Highlights of Kay Kyser's Show at Hanford



High point in hilarity came when husky Walter Nilander was chosen to learn the art of hula-dancing. Clad in a dainty grass skirt, he receives competent instruction from pretty Marvel Andre, while maestro Kyser lends encouragement from the sidelines. Nilander is a native of Minnesota.



The Town Criers give out with a bit of sending swing. These four—who are actually brothers and sisters—were making home territory in last week's shows, since they are natives of Coeur d'Alene, Idaho.



When they called her "Gorgeous Georgia Carroll" they weren't fooling, if the enthusiastic cheers awarded Kyser's blonde soloist were any measure. Here she swings out on "Embraceable You", accompanied by the Geiger Field Band. This was the first civilian performance for the Kyser show in three and one-half years, since the outfit's time is largely taken by entertaining service groups.

## Presentees on Project Down

Last week set the Project presentee record back a month, when presentees dropped for the fourth consecutive week to score an overall average of 6.6 per cent.

### Labor First

First in the week's averages was Labor with 4.5 per cent. Second and third places were held by Transportation and Earthworks with 4.7 and 5.7 per cent respectively.

Crafts improving their standings were: Labor, Transportation, Concrete, Concrete Labor and Electrical. Two crafts, Reinforcing Steel and Piping, remained the same. Six crafts lowered their standing from the week before: Carpenter Labor, Mechanical, Riggers, Transportation, Earthworks and Paint.

### Is The War Over?

New York—The shortest distances to Berlin from advanced Allied lines today:

Western Front—296 miles from point southeast of Nijmegen. Unchanged.

Eastern Front—315 miles from Warsaw. Unchanged.

Italy—528 miles from point north of Ravenna. Unchanged.

### William Wilson Optometrist Optician

#### MOVED TO SUNNYSIDE

Across from Postoffice

EVENING APPOINTMENTS  
Phone Sunnyside 2761

Write Box 698

### REFERENCE TO HANFORD WORKERS

General Overhauling  
Motor Tune-up  
Brake Service

Auto Parts and Accessories  
Limited Stock Seal-Beam  
Fog Lights  
Radio Antennas

OPEN EVENINGS AND SUNDAYS  
G & L SERVICE  
2ND AVE. & W. WALNUT ST.  
YAKIMA

## BUY MORE WAR BONDS

### RICHLAND TRANSIENT QUARTERS

wish to announce

to

PROJECT EMPLOYEES

that

ROOM RESERVATIONS IN THE  
TRANSIENT QUARTERS  
ARE AVAILABLE FOR THEIR FRIENDS  
AND RELATIVES

subject to

PROJECT RESERVATIONS



Our wishes are as endless as the continuous, unbroken circle formed by the holly wreath which marks our doorway as one of Christmas cheer!

SEARS, ROEBUCK & CO.

## SALE SALE SALE SALE

### DON'T DELAY

Take Advantage of These Bargains Today

Most Unusual Buys Found Anywhere

100% All Virgin-Wool Suits, 3-Piece Suits  
and Coats 1/3 Off

EXCLUSIVELY AT THE

**Hollywood Shoppe**

HANFORD, WASH.

WE  
WISH YOU  
A  
MERRY  
CHRISTMAS

at the

**Bowling  
Alley**

Delicious Malted Milks

Hot Coffee

And Doughnuts

10:00 A.M. to 12:00 P.M.  
Daily

FULL OF PART TIME  
PIN SETTERS WANTED



# THE WORLD AT WAR

## The Western Front

"Everything or nothing" seems to be the slogan adopted by the Nazi high command last week. Over the weekend they started a terrific counter-offensive against a quiet sector of the front extending from a point below Aachen down to the northern part of the Duchy of Luxembourg. North and south of this sector have been the parts of the front where the American Third and Ninth armies have been grinding out a slow steady offensive for weeks. The Germans threw in a mass of armor and infantry supported, for the first time in months, by a considerable force of Luftwaffe fighters and bombers. The offensive caught the First Army off balance and rolled up a dent of several miles in some portions of the line. Just how seriously it has hit had not been disclosed as we went to press, for security reasons, according to G.H.Q. in Paris.

They did state, however, that General Hodges has sent a heavy weight of armor into the defense and that it is possible that the enemy has over-extended his drive and put some columns into a position where the Americans may be able to bring the famous football "mouse-trap" play into use. Soon after the Nazis struck their all-out blow American and British fighters, dive-bombers and heavy bombers began to rally to the defense from

all parts of the front, and from behind the front in France, Belgium, the Netherlands and even from England. Our numerical superiority soon began to tell in the air, and at this writing the effect of the Luftwaffe support, which at first helped the enemy considerably, was beginning to be lost.

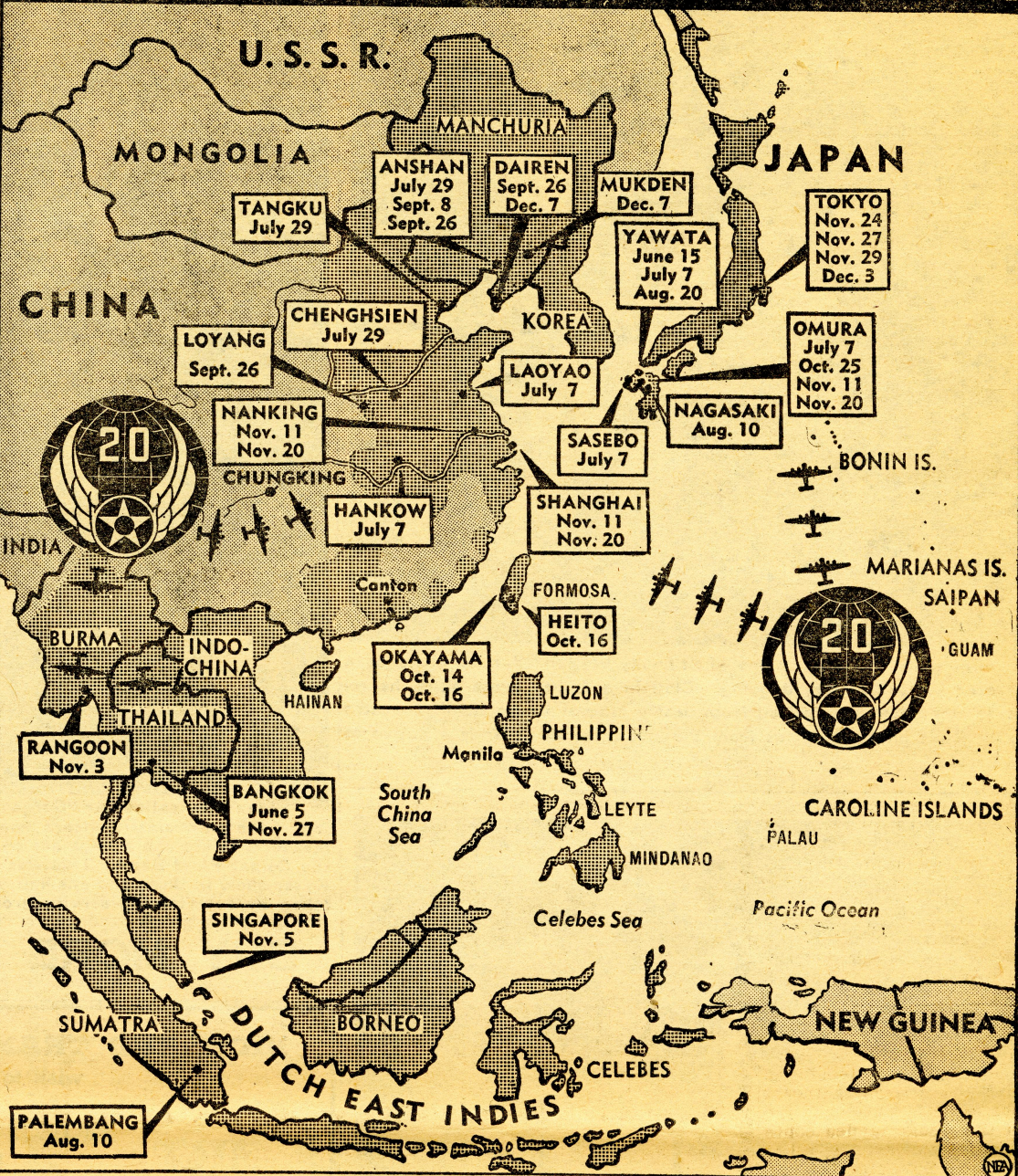
This may be a last desperate lunge for all or nothing, as was the German offensive in the summer of 1918—the offensive which Americans stopped at Chateau Thierry and set back on its heels into a retreat which ended only with the Armistice on November 11th. If we can contain this Nazi counter-offensive and set it back in short order, it may be the beginning of the end. If, on the other hand, the enemy can break through and unbalance our line, it may buck him up enough to hold out until we here at home can make and deliver the tremendous mass of munitions needed to break the Siegfried Line.

One chap who doesn't think much of women is Ira Kersh of Chicago—the founder of the Anti-Pipe Abusing Society.

Kersh is organizing the A-P-A-S so that the existing supply of pipes can be distributed fairly to cigarette smokers. But the real purpose of the A-P-A-S is the prevention of cruelty to pipes.

That's where the women come in. Kersh doesn't think he will invite the ladies to join his club. He asks: "How can women keep their mouths shut long enough to burn up a hodful?"

## TWENTY FOR THE TWENTIETH



When B-29 Superfortresses of the 20th Air Force dropped bombs on Mukden, in southern Manchuria, on Dec. 7, they were blasting the 20th Jap-held city since these aerial giants began combat operations last spring. The map above shows the 20 cities, with dates of raids. Because often more than one city was hit in a single mission, there were 35 actual bombings, over a period of 19 days.

# Firestone

TIRES - ALL SIZES  
BOTH 4 & 6 PLY

Come In LET US HELP YOU  
Make out a TIRE RATIONING CERTIFICATE

WE ARE  
TIRE  
HEADQUARTERS



Exclusive extra values found in Firestone Tires assure extra mileage, extra safety, extra strength. Whether you buy the Firestone DeLuxe Champion for passenger cars or Firestone Transport Tires for trucks you get the best at no extra cost.

SPECIAL  
SALE 5000 SALE

KAHKI WORK PANTS

FOR THOSE WHO WANT THE BEST

DeLuxe, extra heavy, sanforized, tightly woven army twill, with lustrous long-weaving mercerized finish, neat, fast color army tan, five pockets, serged seams bar-tacked at points of strain. All sizes. SHIRTS TO MATCH.

Ceiling Price \$4.45

SPECIAL PRICE \$3.95

Limit Two Pair

### THREE LOCATIONS

AVE. A STORE  
Block West of Admin. Bldg.

AVE. B. STORE  
West of Mess Hall No. 4

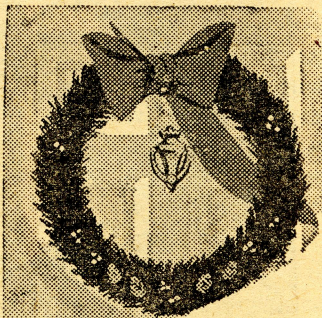
Hanford

Operated by  
CONTRACTORS  
SALES & SERVICE

23 AVE. C  
Main Highway Phone 661

Kennewick

## BUY MORE WAR BONDS



To wish you all of the season's best

And still comply with the mailman's request

We're taking this way

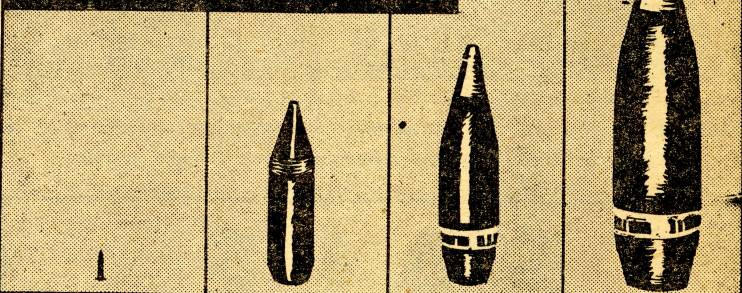
To our friends to convey

A Merry Christmas and

Happy New Year's Day

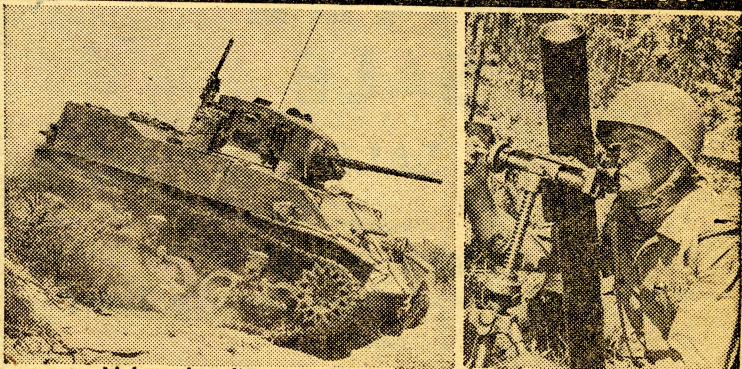
Jac and Hayden Rector

## THREE MONTHS' AMMUNITION SUPPLY



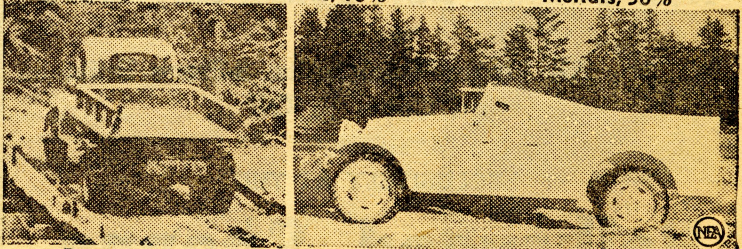
Small Arms Bullets 300,000,000 rounds  
Mortar Shells 3,500,000 rounds  
105-mm. Shells 4,426,000 rounds  
155-mm. Shells 1,248,000 rounds

## MATERIEL LOSSES IN ONE MONTH



Light and medium tanks, 10%

Mortars, 50%



Dump trucks, 83%

Scout cars, 14%

Reasons why U. S. war plants are being asked to step up production are shown in the above charts. The figures on the rate the U. S. armies in the European theater are using ammunition and materiel were given by Gen. Brehon B. Somervell, commander of the Army Service Forces. Figures on losses are from all causes.



The Eastern Front

Budapest still held out last week, in what is beginning to resemble the siege of Stalingrad or Sevastopol. The Red Army has all but surrounded the city, leaving only a narrow escape corridor to the west into Vienna. Hand to hand fighting is fierce in the suburbs of the Hungarian capitol, and the Russian artillery is pounding the city to rubble. Far north of Budapest the Reds are lunging north and west in knifing drives against weak opposition. One drive is taking in more territory in Slovakia, while another is headed west toward the Austrian border, and may cut off the last escape route for the Nazis penned in western Hungary.

ITALIAN FRONT.....  
For the first time in weeks the allied forces were able to make some substantial headway. The veteran British Eighth Army finally worked its way into position to force the enemy out of the important town of Faenza, and followed up this capture with an advance of some five miles to the Senio River, next barrier on the road to Bologna. Visiting American congressmen say that too little credit has been given to the toughness and importance of the Italian front.

The Pacific Front

What the Jap high command think of American military strategy must be highly unprintable. No sane commander would think of jumping to another highly important Philippine island before he had finished cleaning the enemy out of the first one. Which of course is exactly why MacArthur invaded Mindoro before he had thrown the Japs off Leyte. That the invasion was a total surprise is evidenced by the fact that the first landings were effected and our men were a mile inland before even a single rifle shot was fired at them.

As this goes to press advances as much as 11 miles inland have been made and Headquarters reports that a Jap force of considerable size has been pocketed north of the town of San Jose on the southeast coast of the island. Meanwhile the success of the wedge landed south of Ormoc on Leyte last week has become certain. Sweeping through Ormoc the Americans pushed north to contain the enemy in a small area on the northwestern corner of the island.

General MacArthur reports that guerilla troops under American officers are taking areas on several other islands, including large Mindanao, which were formerly entirely under Japanese control.

The Strategic Air War

The tempo of Superfortress bombing of Japan proper is being stepped up. In addition to the recent raids on Tokyo, the big birds from Saipan have been pounding Jap aircraft plants and naval installations with deadly precision—and happily with little or sometimes no losses.

Bad Weather Driving

- Hints for Motor Car Driving
1. Drive slowly on slippery roadways; stop, turn and use brakes with caution.
  2. Approach curves, hills, bridges, railroad tracks, danger and caution signs with reduced speed and extra care.
  3. Before descending steep or slippery grades, shift into second or low speed.
  4. Make sure the windshield wiper operates effectively.
  5. Sleet on the windshield may be avoided by wiping the glass with glycerine and by raising or blocking up the rear end of the hood to let the engine heat help melt the ice.
  6. In heavy mist or fog use the headlights with depressed beam; the upper beam or a spotlight will glare back at you.
  7. In night driving wipe the mud

Buy More War Bonds

Western Union

Cable

December 18, 1944

To Lieut. Arlys Wineinger & Crew of DAY'S PAY

Our quota sixth war loan four hundred thousand. We bought over one million. Merry Christmas and God bless you.

Col. F. T. Matthias  
for H.E.W. Construction Workers

or snow from headlamps frequently; also clean the entire windshield often.

8. Keep out of ruts in mud, snow and frozen ground. Beware of soft shoulders. If off the pavement, slow down and turn back with great care to avoid a skid or a lurch into another traffic lane.

9. Spinning the rear wheels only digs deeper into mud or snow. Rock the car forward and back a few inches repeatedly until you can pull or back out.

page went off to the boys who operate DAY'S PAY just as soon as the final returns were tabulated last Monday. You know there has been a lot of talk about war workers here at home getting the idea that the war is as good as over and looking around for good peace time jobs. A lot of high-up officials think that is why we are falling behind in production of some things the boys at the front need badly. Of course our fighting men out there hear about such things and it makes them pretty sick at heart. They figure that when they are risking their lives and going through hell every day, the least we can do is to stay on the job and get them the weapons they need.

Then the papers have been saying that the individual buying of Sixth War Loan extra bonds has been lagging. The loan as a whole went well over the top but at last reports it was mostly due to big companies, banks, insurance companies and so

On Second Thought

by GORDON SUTHERLAND

Well, Hanfordonions, you did it—and how! The cablegram which the Sentinel has reproduced on this

Gifts of Distinction

Personalize her Christmas with a personal gift—Make this her very own Christmas with one of the following lovely gifts—



- Lingerie
- Jewelry
- Furs
- Bags
- Handkerchiefs
- Scarfs
- Gloves
- Sportswear

New Gifts of Quality and With That Air of Distinction Are Arriving Daily

Gift wrapping service is yours for the asking

SPECIAL ANNOUNCEMENT

Saturday 16th      Wednesday 20th  
Monday 18th      Thursday 21st  
Tuesday 19th

We are going to be open from 10:15 A.M. to 9:00 P.M.

Friday, the 15th and 22nd, will be open From 12:30 P. M. Until 9:30 P. M.

Saturday, Dec. 23 10:15 A. M. to 6:00 P. M.

Make This Store Your Xmas Shopping Center

The Style Center

"Latest Styles at Thrifty Prices"

forth. The little guy, you, me and the other fellow—he wasn't coming through the way he had been on the other war loans. Well, we here at H.E.W. can't make up for the rest of the country, and we can't buy bonds enough to back up the whole army and navy. But by jumping Jehosaphat, we can buy enough bonds to back up the boys who fly our bomber for us and we did! I'm goin' around with my chest stuck out a little bit these days and I think most of us here on the project have a right to be proud of ourselves. We've gone over the top on every drive the government or the Red Cros or National War Fund has asked us to get behind and just for good measure we went farther over the top on this one than on any other.

While we're at this braggin' might as well do the job up right and go the whole hog. I think it's pretty swell the way so many of us are staying here to see the job through as long as it needs us. This is the time of all times that people like to be back in their home towns with their folks and friends. The Employees Association is doing a marvelous job of providing us with

entertainment over the holiday season, but all the shows, dances and games in the world don't take the place of home. That's why I claim that those who are sticking it out are real Americans doing a job the same way our fighting men are doing it. We won't have any medals to show or any battle stories to tell, but when the time comes we can say with real satisfaction, "I stuck it out at Hanford as long as they needed me."

And the day will come when that will mean something anywhere in the civilized world. For some day the whole history of H.E.W. will be publicized, and those who came here and stayed here because they were strong in the belief that this was the best way to back up the fighting men will be recognized as real patriots. This won't be the kind of Christmas we treasure in our memories, but where on this earth will anyone be able to say "Merry Christmas" and make the wish ring true? Certainly not out there where five or six millions of our boys are facing fanatical enemies. To them and to you, I can only wish that God be with you on this Christmas day.

the drug center

WEEK DAY STORE HOURS  
9 a. m. to 10:30 p. m.

SUNDAY STORE HOURS  
9 a. m. to 10:30 p. m.

708 Symons St.  
RICHLAND, WASH.

GREETINGS  
WE WILL CLOSE AT  
NOON XMAS DAY

FOR THE KIDDIES  
Dolls - Doll Beds  
Musical WAC Doll - Games  
Aeroplanes - Wagons  
Chair & Table Sets  
Stuffed Animals & Dolls  
Tanks, Jeeps, Ironing Boards

CHEN YU GIFT SETS

THE DAZZLE . . . . .	1.50
THE BEAUTY BOX . . . .	6.50
THE FOLDET . . . . .	2.00
THE CHECKERBOARD . .	1.50
THE COSMOPOLITAN . .	7.50
THE CASUAL . . . . .	1.50



## More Than Double Quota in H. E. W. Sixth War Loan Drive

When the Sixth War Loan drive ended last Saturday H.E.W. workers had established an all-time record for the Project, and were running a strong race for top honors for this loan in the entire country. Two and one-third times our quota was the final total for the whole project. Individual purchases by people on the Project amounted to \$1,463,000, compared with the quota of \$600,000 which was set before the drive started on November 20.

Every craft, department and subcontractor exceeded its goal, with some units hitting two, three or even more times their quotas. The figures below are the percentages of quotas attained by the various crafts and departments:

	% of quota
Carpenters	360
Reinforced Steel	350
Paint	300
Pipe	270
Mechanical	231
Transportation	214
Structural Steel	200
Concrete	184
Labor	177
Earthworks	177
Electrical	148
Field Engineering	840
Safety	378
Service	305

Layout	300
Engineer's Office	288
Control	284
Hanford Housing	252
Acc't. & Audit	206
Security	108

Olympic C. C.	264
---------------	-----

Operations 219  
Among the crafts, the standing as to gross purchases of bonds is Transportation first, Carpenters second, Mechanical third and Pipe fourth. Both the first and second crafts bought more than \$100,000 in extra bonds.

### Pasco V.F.W. Post To Open New Quarters

The Pasco Post of the Veterans of Foreign Wars is opening new quarters the middle of January at 121 South Fourth Street in Pasco. The club rooms will provide social activities for members of the organization, their families and guests.

Those eligible for membership in the organization are asked to write Post No. 1651 at the above address so that contact may be made regarding future plans of V.F.W.

## Stage Routed Via Richland

Arrangements have been made with officials of the Washington Motor Coach company for re-routing of the final night bus to Seattle so that it goes through Richland en route, it was reported Tuesday by Fred Becker, chairman of the Walla Walla transportation committee.

Net effect of the change is to allow Richland residents to shop in Walla Walla and return home the same day, an opportunity which was denied them in the past when they could get no closer to Richland than the main Walla Walla-Yakima highway several miles away.

As arrangements now stand, the night bus leaving Walla Walla at 9:30 p.m. turns off the main highway at the L south of Richland, proceeds to that city and then follows a loop back to the Yakima highway at Kiona.

The afternoon bus, leaving Walla Walla at 12:30 p.m., remains on the original route and does not go through Richland, Becker stated.

Washington Motor Coach Company officials here reported Tuesday that the change has already been made in the routing.

Becker conferred several days ago in Seattle with Joseph Rosenberg, traffic manager for the motor coach firm, and explained that it was impossible at that time for a Richland resident to come to Walla Walla, do shopping and return home by bus the same day. The change was promised at once and was made promptly.

## Entertainers



The Esquire Girls (on whom Santa is smiling benignly above) were a smart spot on last week's Thursday night Vaudeville at the Auditorium. But hit of the show was well-upholstered vocalist Hattie Bailey, who quieted the umpteenth encore request with "I thank all you good people, but hell, I'm tired."

### Vehicle Licenses Available At Hanford and Richland

Hanford and Richland residents are urged to secure their car, truck and trailer licenses early in order to avoid a long wait the last few days of the year. They may be secured in Hanford in the lobby of the Post Office and in Richland in

Building 51-X, three doors south of the Ration Office on George Washington Way.

### BUY EXTRA WAR BONDS

### Weisfield and Goldberg Employees Have Party

Employees of Weisfield and Goldberg, Hanford Jewelers, and their guests were entertained at a Christmas dinner party last Saturday night by Hap Anderson, manager. The annual holiday dinner is a tradition with the Seattle jewelry firm and its branch stores.

### SHOPPING AT

## Weisfield & Goldberg's

### GIFT CENTER IS A PLEASURE

Glass Liqueur Sets	\$4.95 to \$10.75
Bar Sets	\$12.95
Men's Swank Sets	\$3.50 to \$10.00
Men's Hickak Sets	\$2.50 to \$10.00
Gold Locketts	\$3.95 and up
Gold Crosses	\$5.95 up
La Tosca Pearls	\$2.95
Earrings	\$1.23 to \$50.00
4 Piece Dresser Sets	\$6.95
Dresser Sets	\$5.95 to \$39.75
Tom & Jerry Sets	\$4.95
Dunhill Cigarette Lighters	\$2.00 - \$7.50
Pin Up Girls	\$1.49

### SPECIAL

15 Jewel — Strap Wrist Watches  
Reg. \$37.50 — Now \$24.75

New China Salt and Peppers,  
Ash Trays, Figures  
\$1.15 to \$7.50

WATCH REPAIR SERVICE  
ENGRAVING  
DONE IN OUR OWN SHOP

# Weisfield and Goldberg

JEWELERS  
MAIN SHOPPING CENTER  
HANFORD

## THE RANCH CLUB

now organized under the laws of the State of Washington as a non-profit social club is opening a membership drive for 1,000 members. The advantage in changing over from a public restaurant and supper club to a social, non-profit club under the State laws will be:

1. Elimination of cover charges and cabaret taxes so that a meal now costing a total of \$3.69 will cost only \$2.06. A different menu now costing (including cover charge and cabaret taxes) \$2.46 will cost only \$1.03.

2. All members will have full access to the Club's facilities including dining rooms, dancing floors, shows, reading and lounging rooms and every other form of recreational activity to be found in the most exclusive clubs.

Membership by written application only. All applications subject to the Club's By-laws. Membership fee is \$10.00 and the dues are \$1.00 per month beginning from January 1, 1945. Membership includes the immediate members of the family. Guests may be invited by members in accordance with the By-laws.

If interested, please clip the coupon below and send it in with your remittance of \$10.00.

## THE RANCH CLUB

Route 2, West Highlands Kennewick, Wn.  
Make Your New Year's Reservations Now

### Membership Application

The Ranch Club  
Post Office Box 416  
Kennewick, Washington

Gentlemen:  
I hereby apply for membership in The Ranch Club, a non-profit, social organization, and enclose \$10.00 as initiation fee. This application is made subject to the Club's By-Laws and the action of the Membership Committee. I understand my remittance will be returned to me in case my application is not accepted.

Name

Address

Occupation

### Cage Star



Freshman Frank Hoffine, above, is a guard on the University of Oregon basketball team that will meet a Hanford star team a week from tonight at the Auditorium. On Tuesday of this week (see page opposite) the local stars will play the University of Washington quintet.



# Hanford Stars Meet College Basketball Team on Tuesday

When the Hanford Stars take the floor next Tuesday night at the Auditorium against the powerful University of Washington Huskies, many new faces will be found in their lineup.

## New Players

Not too well pleased with their showing against a weak and inexperienced Eastern Oregon College team, who they beat 49 to 19, and realizing the caliber of basketball they will be matched against when the Huskies come to town, the local team has recruited several new players in an effort to be at top strength.

Some of the news boys who will appear against the Huskies are: Bob Abrams, star forward for the Hillbillies and leading scorer in the Hanford Invitational Basketball Tournament; Fred Hollenback, 6'3" center; Bill Bulow, former star guard for Lake Forest College; Layne Berry, sharpshooting for-

ward; Dave Weise, forward and manager of the Randall & Doyle team; Don Hanahan, rangy center for the Hillbillies. Also slated to see action are several boys already familiar to Hanford fans—Earl Rinehart, Bill Sees, Chuck Foster, and Marty Tomazin.

The University of Washington will present a young but highly regarded quintet. Only last Saturday night they knocked off the Fort Lewis Warriors 59 to 54. Fort Lewis is considered one of the strongest teams in this section of the country.

## Husky Stars

The Huskies are led by two returning stars from the last year's championship team, Don McMillan, a big, clever forward who scales 6'3", and Don Vandenberg, 6'3" center. McMillan is holder of the Pacific Coast Conference (Northern Division) individual scoring

mark for one game (34 points).

Other stars on this year's five are Norm Carnovale, Joe Creveling and Chuck Sackett at forwards; Bob Jorgensen, Dick King and Bob Lemmon at guards, and Art Anderson and Dick Brooks at center. The squad as a whole is made up of naval trainees and freshmen, many of them too young for the service.

The Huskies are famous for their spectacular style of play and local fans should be in for a real treat. "Hec" Edmundson, colorful and highly successful coach, who is starting his 24th year at the University of Washington, is a past master of the "flat-foot" game and boasts one of the finest records in the country.

## Girls Games

Two girls games will precede the Washington game which is scheduled to start at 8:30 p.m. At 6:00 p.m. the Sharpshooters will play the Time Office, and Richland will meet Olympic Commissary Company at 7:00 p.m.

Sponsored by the H.E.W. Employees Association, all basketball games in the Auditorium are free. The Hanford Stars will play the University of Oregon next Friday night at the Auditorium.

## Invitational Cage Finals at Auditorium

Thrifty Drugs and the Hillbillies, both of Richland, will meet on the Auditorium court Sunday afternoon, December 31, to decide the Championship of the Hanford Invitational Basketball Tournament. Both teams came from behind to defeat two slightly favored local teams in the semi-final round played last Sunday at the Auditorium.

## Scores and Fouls

The rangy Hillbillies, featuring the best fast break offense in the tourney, outran and outshot Concrete & Masonry to win going away 45 to 37. The game was hard fought and slightly on the rough side—a total of 34 fouls being called, 29 of them on the Cement boys.

After being tied up 18-all at the half, the Hillbillies, led by Bob Abrams, who alone scored 15 points in the second half, suddenly turned on the heat in the 4th quarter and Concrete was unable to keep pace.

Abrams with 19 points—best effort to date in the tournament—was high scorer for the winner, while Chuck Foster, Marty Tomazin and Bob Anderson, each with 10 points, were best for Concrete.

## Thrifty Drugs Win

Thrifty Drugs reached the finals by virtue of a thrilling 33 to 31 win over Newberry, Chandler & Lord. The game was nip and tuck all the way, and while Newberry, Chandler & Lord was out in front most of the time, their lead was never more than 2 or 3 points.

Better reserve strength and superior conditioning were the deciding factors in Thrifty Drugs' win; Lord might easily have won, had they been more accurate from the foul line—they missed sixteen free throws.

Two speedy forwards, Laney Berry and Jim Walker, did most of the scoring for the druggists, while Jack Warner and Bill were best for Newberry, Chandler & Lord.

## First Round Results

Results of the first round of the Hanford Invitational Basketball Tournament are as follows: Hill-

billies, 33—Army, 18; Concrete & Masonry, 24—Randall & Doyle, 23; Newberry, Chandler & Lord, 35—Patrol, 21; Thrifty Drugs, 48—Stores, 23.

Highlight of the opening round was Concrete's last second win over Randall & Doyle. With the grocery boys out in front 23 to 22, little Bob Anderson, Concrete forward, hit a beautiful basket with only 5 seconds remaining in the game to win for his team.

## Fight Bouts Close Matches

Dave Johnston, 198 lbs., from Portland, Oregon (former Pacific Coast Amateur Champion) won a clean cut decision over Sailor Jack Huber, 202 lbs., Astoria Coast Guardsman in the eight-round wind-up on last Monday night's all professional boxing and wrestling show at the Auditorium.

## Substitutes

Johnston, who substituted for Moose Kennedy when the later was injured and unable to appear, was the aggressor all the way, and his

long range attack had the sailor in trouble on several occasions.

Johnston's win was somewhat of an upset;—only last Friday he dropped a close decision to the same Jack Huber in a Portland main event.

Jimmy Hogan, 147 lbs., won a hard fought decision over Kelly Jackson, 146 lbs., in the eight-round semi-windup. This fight was probably the best on the entire card. Jackson and Hogan fought to a draw the last time out in Hanford.

## Evenly Matched

In the six-round special event Eddie Weller, 147 lbs., of Portland, took a very close decision from Eddie Wharton, 147 lbs., also from Portland. there was only two points difference in the judges' decision—which gives you a fair indication just how evenly matched these two boys were.

Chief Thunderbird, Indian grappler from Victoria, won two out of three falls from Harry Kruse, Portland heavyweight, to win the one hour wrestling exhibition. Kruse was substituting for Rube Wright, who was scheduled to meet the Chief, but who was unable to reach Hanford, due to transportation difficulties.

## Hanford Clothing Hut

IN THE SHOPPING CENTER

### SHOP EARLY THIS CHRISTMAS

New Shipment Top Coats  
\$27.50 to \$32.50

— Just Arrived —  
The "Wright" Hat  
\$2.95 to \$8.95

### SPECIAL

50% Wool Union Suits	\$4.98
\$19.75 Leather Coats	\$14.95
\$24.75 Sheepskin Coats	\$19.75
\$16.50 Wool Bath Robes	\$9.95
Men's Cords	\$4.85
Union Made Carpenters' Overalls	\$3.50
Special Military Shirts	\$6.95

Christmas Wrapping for the Asking

Large Assortment of  
Men's Slacks and Dress Pants  
Special Heavy Weight All-Wool Sur Coats  
\$7.95

Work Pants by "Days"  
All Sizes, \$2.95 to \$3.95

### WE FEATURE

Sport Shirts  
Neckwear  
Handkerchiefs  
Belts  
Wool Shirts  
Army Pinks

Sweaters  
Tie Sets  
Suspenders  
Socks  
Officers' Shirts  
Men's Suits

LOCATED NEAR THE BANK  
IN THE SHOPPING CENTER  
HANFORD, WASHINGTON



Our  
Best  
Wishes  
For a

MERRY  
CHRISTMAS

Richland Thrifty Drugs

Heart of the Shopping Center

GOETHALS & KNIGHT

PHONE 640

## SANDY SAGE: He Sings Too



Here's Wishing You  
A Merry Christmas

Bali



## Business Schedule

	A.M.	P.M.
Alteration Shop	8:00—6:00	7:00—8:00
Apparel Shop	11:30—8:00	
Associated Laundry and Cleaning		
Division & A Ave.	9:00—1:00	2:00—8:00
Saturday	9:00—1:00	2:00—7:00
4th & B Ave.		
7th & C Ave. (same as above)		
Barber Shop		
(Rec. Hall)	12:00—10:00	
(Shop. Circle)	10:00—9:00	
Beauty Shop		
(Shop. Circle)	9:00—9:00	
(Saturday)	9:00—4:00	
Canteen	9:00—10:00	
Sunday	8:00—5:00	
Drug Store		
(Shop. Circle)	10:30—9:00	
(including Sunday)		
Firestone Clothing		
(4th & B)	10:00—9:00	
Firestone Tire and		
Clothing	9:30—8:00	
Sunday	9:30—2:00	
Fix-It Shop		
(Trailer Village)	10:00—8:00	
Goodrich Tire Co.		
(Div. & A)	10:00—9:00	
Grocery		
(Trailer Village)	10:00—7:00	
(Shop. Circle)	11:00—8:00	
Hanford Clothing	12:00—9:00	
Hanford Shoe Repair	10:00—8:00	
(Saturday)	10:00—6:00	
Hanford Shoe Store	10:00—8:00	
Hanford Super Service		
(Trailer Village)	9:30—9:00	
Sunday	9:00—2:00	
Sears Roebuck	12:00—9:00	
Weisfield & Goldberg		
Jewelry Store	10:00—9:00	
SERVICES		
Bank, Mon., Tues.,		
Thurs.	3:00—8:00	
Wed.	11:00—4:00	
Fri. (bank cashing)	12:00—9:00	
Fri. (banking)	3:00—9:00	
Clinic	8:00—5:30	6:30—9:00
Columbia River Tel. Co.		
Exchange & Long Distance		
Room Adjoining Soft Drink		
Parlors, Rec Hall 1	8:00—12:00	
Long Distance Tel. Booth in		
vestibule of Bed Roll Office		
in Mess Hall 2 Open all night.		
Express Office	10:30—7:30	
(Saturday)	10:30—6:00	
(closed 12:30—1:30, 5:30—6:30)		
Library	1:00—10:00	
(Sunday)	1:00—6:00	
(closed Monday)		
Notary Public	11:00—10:00	
(Saturday)	11:00—8:00	
Red Cross		
Surgical Dressing		
(Mon. & Fri.)	10:30—4:00	
(Tuesday)	7:30 p.m.—9:30	
Sewing		
(Wed. & Thurs.)	10:30—4:00	
Women's Refreshment		
Hall, Mon.—Fri.	9:00—11:30	
Saturday	9:00—1:00 A.M.	
Sunday	9:00—12:00	
Name Band		
Nights	9:00—2:00 A.M.	
Western Union	8:00—12:00 mid-	
night.		
delivery if badge number, com-		
plete address is given.		
POST OFFICE		
	A.M.	P.M.
General Delivery		
Mon. and Fri.	11:30—9:00	
Tues., Wed., and		
Thurs.	11:30—8:00	
Sat.	11:30—6:00	
C.O.D. and Registry Window,		
Money Orders, Stamps and Par-		
cel Post.		
Mon. thru Fri.	9:00—5:00	
Saturday	9:00—2:00	
Extra hours, Mon., Fri.		
only	6:30—9:00	

## Church Services

<b>CATHOLIC</b>	<b>ASSEMBLY OF GOD</b>
Father W. J. Sweeney	Service Grange Hall
Saturday Confessions: 6:30 to	2:30 and 7:30 p.m. Services.
10:00 p.m. Small house next to	10:00 a.m. Morning Worship
Post Office.	
Sunday Masses: 7:00 and 9:30	
a.m.	
Confessions: 8:00 to 9:30 a.m.	
and 7:00 to 11:00 p.m.	
Christmas Eve Midnight Mass in	
the Auditorium.	
Christmas Day Masses: 8:00 and	
10:00 a.m.	
Tuesday, Confessions: 7:30 to	
8:00 p.m. Rosary, 8:15. Recreation,	
8:30 p.m. Rear of Auditorium.	
<b>UNITED PROTESTANT CHURCH</b>	<b>LUTHERAN CHURCH</b>
Rev. Ellis Marshburn.	Rev. J. Milton Grimsrud
Friday, December 22: Sunday	National Lutheran Church
School Christmas Program. 6:30	10:30 a.m. Sunday School. New
p.m.	Grade School building.
Sunday, December 24: Morning	8:00 p.m. Evening worship. White
Worship and Communion service,	Chapel.
11:00 a.m. Vesper candlelight	Midnight, Christmas Eve. Special
service, 6:30 p.m. Party in Church	bus service to program at Richland
parlor, 10:30 p.m. Christmas Eve	Lutheran Church.
candlelight communion 11:00 p.m.	Christmas Day service. 11:00 a.m.
Wed., 8:00 p.m. Mid-week Prayer	Hanford.
Service.	
<b>CHURCH OF CHRIST</b>	<b>CHRISTIAN SCIENCE CHURCH</b>
E. E. Mitchell, Minister	Parlor of United Protestant Church
White Chapel	Sunday, 1:00 p.m. Services.
1:00 p.m. Bible Study	Wed., 8:00 p.m. White Chapel.
2:00 p.m. Church Services	
8:00 p.m. Tuesday, Bible Study	
	<b>LATTER DAY SAINTS</b>
	Clyde F. Hansen, Pres.
	School Bldg.
	10:30 a.m. Sunday School
	7:30 p.m. Evening Service
	9:15 a.m. Priesthood Meeting
	8:15 p.m. Tuesday, M.I.A. Com-
	munity Building.
	<b>COMMUNITY CHURCH</b>
	Colored 201 Recreation Bldg.
	11:00 a.m. Morning Worship
	3:00 and 8:00 p.m. Services

## Out on the Housetop



Evidence that the kind old gentleman St. Nick is everywhere in Hanford, but it's the Time Office and the Grade School Building that prove it. The above holiday scene is part of the elaborate decorations in the streets and buildings at H.E.W.

## Classified Ads

RATE—5c per word—minimum 50c per ad.  
Deadline Monday 12:00 Noon before Friday of publication.  
Ads may be paid for by check or in cash at Hanford office of The Sage Sentinel in Training and Relations Building on Kadlec Plaza or at Richland Construction Area Personnel Office in basement of old High School Building on Cullum Avenue by Tuesday of week of Publication.

### FOR SALE

APPLES — BEST QUALITY, 5c lb. Sweet Cider, 40c gal. E. E. Whitehead Ranch. Whitstran Dist., Prosser, Wash.

Upright piano. 1514 Marshall, Richland. Phone 326-W.

Pre-war Lloyd baby buggy. \$15.00. Baby bed 20"x36" with mattress, \$4.00. 1425 Hains, Richland.

CHEAP — New heavy chenille bedspread. Boy's brown all wool suit, age 11. 303 Davenport, Richland.

Man's \$750.00 diamond ring, \$500.00 CASH. 1328 Wright Ave., Richland.

Oxford Gray Overcoat. Alcoma Wool 38-40. Excellent condition. Also Brown Tweed Topcoat, 38. Call after 5 p.m., Barracks 55, Room 10.

Must part with pedigreed thoroughbred imported Newfoundland dog. Male. 2½ years old. Amiable, lovable disposition. Will sell only to family having children over age of 5. Call R-926 Monday through Friday.

AVON PRODUCTS — MRS. BUCKLEW, 1806 Lee Blvd., Richland.

Orders taken for fascinators. Section Q, Block 2, Lot 38.

New pressure cooker and used golf clubs. R-1130-W.

12 ga. Pump Gun, full choke, 30" barrel, Remington model 10, \$50.00. 1419 Stevens Drive, Richland. Phone R-249.

20 acre irrigated land with buildings and electricity. 5 miles east of Kennewick. Russel R. Ridenour, 106 South 5th Street, Pasco.

1940 Plymouth Coach. Radio and heater, top notch tires. J. H. Frankfort, 506 Goethals, Richland.

Plymouth Dodge motor and clutch assembly. A-1 condition. Corregidor Street, Block 2, Lot 22.

Maple studio couch. Reasonable. Phone R-1270-W evenings.

New dark gray Russian squirrel fur coat. Size 16. Matched hat. Reasonable. Call Richland 490.

Pre-war baby buggy and bed. Inquire 1425 Haines Street, Richland.

Child's pedal airplane, like new. 215 Casey Avenue, Richland.

Pair pre-war Majorette boots. Size 5½C. Slightly worn. No ration stamp. Phone 612, Richland.

New Army overcoat. Size 44. Call evenings and Sundays, Trailer Camp, Section H, Block 1, Lot 9.

Pointer bird dog. One year old. Points and retrieves. Excellent disposition. 1536 Thayer Drive, Phone 152, Richland.

### WANT TO BUY

Piano accordion, Reasonable. Also child's tricycle for 5 year old. Both in good condition. Block 3, Lot 11, Java Street, Hanford.

Singer sewing machine. Feather-weight portable model. Bess Trebbe, Matron, Barracks 31, Room 10.

RADIO. H.E.W. Employees Association. Phone 8063.

### HELP WANTED

Optical Mechanic, able to cut edge and mount lenses needed for new Binyon optometrist's office in Richland. Ability to dispense also desirable. Good opportunity for future advancement. Apply or write Binyon Optometrists, 815 Securities Bldg., Seattle.

Receptionist for new optical office opening soon in Richland. Optical experience preferred. Apply or write Binyon Optometrists, 815 Securities Bldg., Seattle.

### LOST AND FOUND

Lost—Man's Rockford gold pocket watch with hunting case cover. Sentimental value. \$25.00 REWARD. Inquire Sage Sentinel.

Lost—Lady's black wool tuxedo coat, chamois lining, Hudson label. Barracks 6-A, Room 10.

Lost—Friday night, vicinity Barracks 69. Rimless glasses, tan case stamped—Dr. Kierstad, Newport, R.I. REWARD. Barracks 96, Room 51.

Lost—Man's wallet containing money, lodge cards, miscellaneous papers. Finder keep money as reward and please return other contents as same no value to finder. C. S. Crane, Hanford Administration Bldg. Home Phone, Richland 268.

### WANTED - MISCELLANEOUS

Ride to Los Angeles any time after evening of 30th or 31st. E. J. Sullivan, 1327 Kimball, Richland.

### MISCELLANEOUS

Insure your automobile, truck and trailer with the Farmers Insurance Group. New low gas rationing rates. Local agent. Henry N. Jones, Section B, Block 2, Lot 34, Hanford Trailer Camp.

D. W. ZENT, ATTORNEY-AT-LAW, 106 North Fifth Street, Pasco, Washington.

## BUY MORE WAR BONDS

## Ross Music Shop

RECORDS, SHEET MUSIC AND  
MUSICAL INSTRUMENT ACCESSORIES  
REMEMBER—RECORDS ARE THE IDEAL  
CHRISTMAS GIFT

Hours—10 A.M.-9:30 P.M.  
Balcony — Hogan Drug IN Pasco

A FIRE INSURANCE premium is a small investment for you to make, but in case of a disaster it means a lot to you. Don't wait until it is too late. INSURE your household furniture and personal effects now.

Agent for the Hartford Fire Insurance Company and other old line companies writing all forms of insurance.

**GRANT H. STRINGHAM**

505 W. Lewis, Pasco—Phone 15  
Or call Richland 1467-W for rates and information

## Hanford

### THEATRE

Box Office Open — Daily At  
10:45 P.M. — Sunday 12 Noon

Friday-Saturday  
**The Andrew Sisters**  
in  
**"Moonlight and Cactus"**

Sunday-Monday  
**"San Diego, I Love You"**  
with  
Louise Allbritton - Jon Hall

Tues.-Wed.-Thurs.  
**"Greenwich Village"**  
In Technicolor  
Starring  
**Carmen Miranda**  
**Don Ameche**  
**Wm. Bendix**

Plan Now to Attend the  
**New Year's Eve**  
**Midnight Show**  
**Sunday Nite, Dec. 31**  
**"Our Hearts Were Young and Gay"**  
with  
Diana Lynn - Gail Russell  
**Tickets Now On Sale**  
**At The Box Office**

## Valley

### THEATRE

Box Office Open — Daily At  
12:45 P.M. — Sunday 12:45 P.M.

Friday-Saturday  
**"West of the Rio Grande"**  
With John Mack Brown

Sunday-Monday  
**"Banjo On My Knee"**  
With Barbara Stanwick

Tuesday-Wednesday  
— Double Feature —  
**"Falcon In Mexico"**  
and  
**"Lure Of The Islands"**

Thursday Only  
**"Brother Rat"**  
With Wayne Morris

## RICHLAND

### THEATRE

Mon Through Fri. 5 till 11  
Sun., Mon. Continuous 1 till 11

Fri. - Sat. Dec. 22-23  
**BABES ON SWING STREET**  
Peggy Ryan - Ann Blythe

Sun. - Mon. Dec. 24-25  
**THE BIG NOISE**  
Laurel and Hardy

Tue. - Wed. - Thur. Dec. 27-29  
**AND NOW TOMORROW**  
Loretta Young - Alan Ladd

Watch for Big Midnight  
Jamboree  
**New Year's Eve**  
We Wish You All a  
Happy Holiday Season