

The SAGE Sentinel

PUBLISHED WEEKLY BY AND FOR
EMPLOYEES OF HANFORD ENGINEER WORKS
Not To Be Mailed or Taken From The Area

VOL. 1, NO. 26

FRIDAY, JUNE 2, 1944

HANFORD, WASH.

Be Sure To Keep Up-To-Date In Puzzle Contest!

Did you miss out on one or more of the picture puzzles?

If you did, that doesn't mean you've lost your chance to win—for the Safety Department has had reprints made of each picture since the beginning of the contest.

Ask your foreman for them! "Catch up" as soon as possible, then keep up-to-date—for this is a contest well worth winning.

It isn't work—it's fun. All you do is to outsmart the other fellows in finding the most safety hazards in the pictures printed on page 4 of The Sage Sentinel each week.

21-Jewel Bulova Watch

First prize is a fine 21-jewel Bulova watch—the kind you've always wanted to own. But that's not all—there are twenty other prizes in this contest, too:

Two 2nd prizes: Detrola Table-model radios.

Three 3rd prizes: \$25 War Bonds.

Five 4th prizes: Parker Pen and Pencil Sets.

Ten 5th prizes: Flashlights, Pipes, Belts, and Billfolds.

All field workmen below the rank of foremen (including sub-contractors) are eligible to enter. No women or office workers are permitted to submit entries—this contest is for "the field" only.

New Banking Hours Effective June 5th

A new banking schedule will become effective June 5.

The old schedule has been revised so that workers can attend to banking business after working hours. Beginning June 5th the doors will be open for business from 3:00 p.m. to 8:00 p.m. Monday, Tuesday, Wednesday and Thursday; Friday banking hours will be from 3:00 to 9:00 p.m. Check cashing facilities will be accessible each Friday from 1:00 to 9:00 p.m.

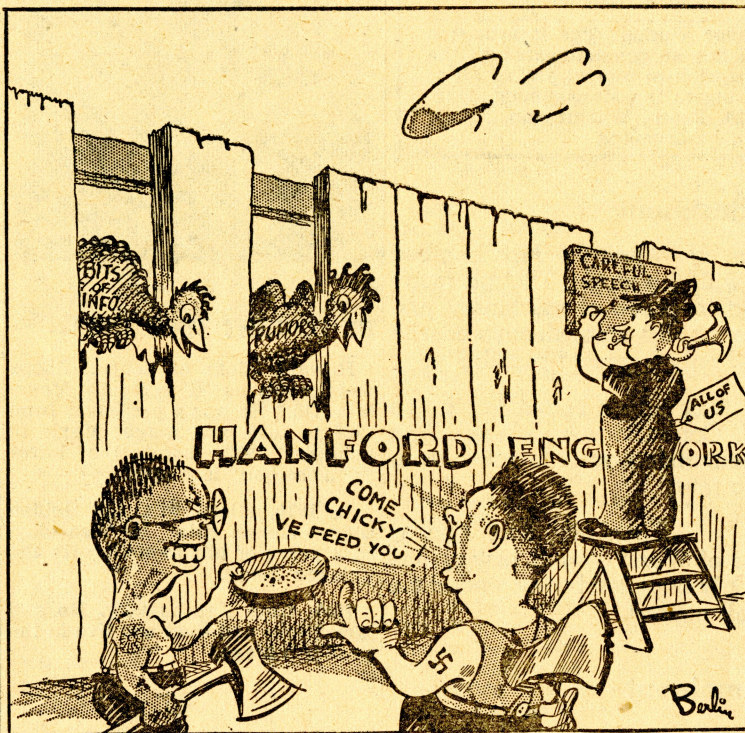
The bank will be closed all day Saturday and Sunday.

First Hanford Forum Meeting Tonight

The first of the Hanford Community Lecture series will be held this evening at 7:15 in the United Protestant Church.

J. Kenneth Pearce, professor of Forestry, University of Washington, will speak on the topic "India and Burma".

BOARD UP THE HOLES SO THEY CAN'T FLY OUT



Bricklayers Retain Lead, Piping Attendance Lags

Pipe Craft had a chance to overtake Bricklayers in the effort to hold down absenteeism last week, because Bricklayers dropped back. But Pipe Craft dropped back too, so Bricklayers remain in the lead with a percentage of 5.3. Pipe's close second was 5.4%. Electrical stepped up to third place with a standing of 6.2%.

Eight Crafts Improve

Eight crafts improved their standing. They were: Electrical, Paint, Labor, Rigger, Concrete, Earthworks, Reinforcing and Transportation.

The over-all plant standing took a turn for the better and now stands at 7.6. This in spite of the fact that six crafts slipped back: Bricklayers, Piping, Carpenter, Mechanical, Carpenter Labor and Concrete Labor.

Department Standings

The week's standings: First, Bricklayers; Second, Piping; Third, Electrical; Fourth, Paint; Fifth, Labor; Sixth, Rigger; Seventh, Concrete; Eighth, Carpenter; Ninth, Earthworks; Tenth, Mechanical; Eleventh, Reinforcing; Twelfth, Transportation; Thirteenth, Carpenter Labor; and Fourteenth, Concrete Labor.

Incentive Plan Payments Being Made Regularly

The Incentive Plan inaugurated here at Hanford Engineer Works has been in effect now over six months. Many wage checks covering payments under the plan have been issued to eligible employees.

In some cases payments are being delayed because the Incentive Unit has not received the physicians' certificates required to support excused absences due to disability. In other instances delay is resulting from failure of employees to return forms sent to them from the Incentive Unit.

Absences due to disability cannot be excused unless covered by a physician's statement. This certification must outline the period of actual disability. A mere statement of treatment will not suffice. Certifications from dentists cannot be accepted.

No absence is excusable other than due to disability, and this absence must be substantiated by a physician's statement.

Attention is again called to the fact that legal requirements make it necessary to deduct social security and income taxes from payments made under the Plan. Payments are based on railroad coach fare, but do not constitute an exact return of transportation expense.

Office To Help Figure New Tax Estimate Opens

Every married person who expects to make more than \$3,500 in 1944 and every single person who expects to make more than \$2,700 must file an estimated declaration of income and victory tax for 1944 by June 15, according to an announcement made by the income tax division of the Internal Revenue Service at Tacoma, Washington.

In order to help employees on the entire project to prepare and file these estimates properly, the Training and Relations Section will maintain offices in Hanford and Richland from 8 a.m. to 10 p.m. every week-day, including Saturdays, until June 15. A staff of trained workers will be available to help employees who wish to avail themselves of this free income tax service.

It will be necessary for employees to bring with them the total figure of their earnings for 1944 up to the last day of May, the total amount of tax which has been withheld by their employers during that period, and the amount of any refund that may have been due them from 1943 income tax returns. It is important that everyone who wishes to use this service have these correct totals added up before he comes to the offices in Hanford or Richland, so that the force can figure the estimated tax in the shortest possible time to tell whether the employee must make an additional tax payment by June 15.

There has been a great deal of misunderstanding about the new income tax bill which has just been passed by Congress in Washington, D.C. That bill refers only to taxes for the year 1945. It does not relieve anyone from filing quarterly estimates of taxes for the year 1944.

The income tax service will be handled in Hanford at the Information Service Office on "B" Street between Division and First Streets, directly across from the Time Office. In Richland the service will be provided in the Information Service Huttment on George Washington Way just north of the Red Cross Headquarters.

Well-Known Harpist To Give Concert Sunday

Harpist Frances Kaub Schlueter will appear in a concert Sunday, June 4 at 8:00 p.m. at the United Protestant Church.

Frances K. Schlueter will present a program which will appeal to all music lovers.

THE SAGE SENTINEL

OUR SLOGAN

"Let's ALL HEW to the Line!"

(Published Weekly by and for the Employees of the Hanford Engineer Works)

Editor Ruth S. Elliott
Management Consultant E. L. Pleninger
Photographer Robley Johnson
Sports Writer J. E. Carter
Staff Artists Anne Mason and Paul Berlin
Hanford Reporter Marguerite Cowger
Richland Reporter Rosemary Squire, Phone 34

Vol. 1, No. 26

Friday, June 2, 1944

Editorial suggestions and contributions should be sent to the Editor, Information Service Building, handed to your foreman, supervisor or placed in suggestion boxes. Deadline for all copy is one week previous to publication. Phone Extension 8661.

Copyright, 1944 by Hanford Engineer Works. The information contained in this publication shall not be communicated to the public or press. Requests for permission to reprint any or all of the contents must be made in writing to the Management, Hanford Engineer Works, P.O. Box 429, Pasco, Washington.

No advertising can be accepted

Rapid Readjustment

Almost two and a half years ago when the Japs bombed Pearl Harbor, U. S. was at peace with the world. Though many of our plants were producing certain types of machinery and equipment for various foreign nations at the time, all-out war with the combined Axis powers seemed only a remote possibility.

But as a result of this fateful attack things began to happen in America. Orders were issued. Contracts were placed. And in an amazingly short time war materials began to roll off our production lines at an encouraging rate.

As months passed American production mounted. And as industry went into its second year of World War II history, the war plants of this country had not only equalled but exceeded the combined production capacity of all nations.

Invasion Imminent

American industry has a right to be proud of this record. American will-power, labor and management—in a few short months had turned abruptly from peacetime production into the world's greatest armament plant.

This mammoth production system which has made possible the impending invasion of Europe—an event of such magnitude and power as to surpass anything of the kind man has ever witnessed. Even as you read this, the invasion may be underway. The whole world—in suspense—awaits the impact of this violent clash of arms.

Every American war worker will have a hand in this battle. The skill of every hand will be in it. The work that has been done has enabled us to defy a powerful, resourceful and alert enemy—but it will not win the war. It is not enough!

Replacements Needed

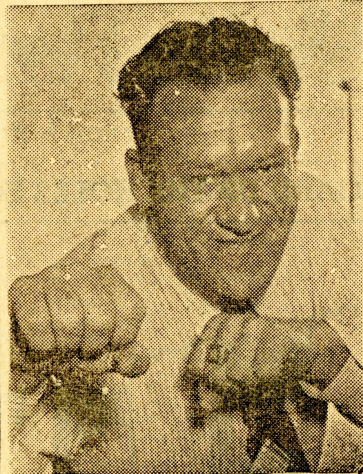
A constant flow of replacements must go to the boys who man our planes, our guns, our ships and our amphibious units. These boys must be fed. They must be cared for. They must be supplied with everything we can possibly give them. They must be backed to the limit!

Military authorities tell us that we have just begun to use the material we have produced in a big way—that we must keep on until the enemy is not only overwhelmed but pinned down hard and fast to his blood-soaked soil.

On the eve of the greatest battle of all history let us pledge to these boys who risk their lives for us that we will not let them down—that we will provide them with everything they need until victory is within their grasp.

Thumbnail Interviews

Interesting Facts About Sportsmen Who Have
A Special Interest and Reputation In Some Field

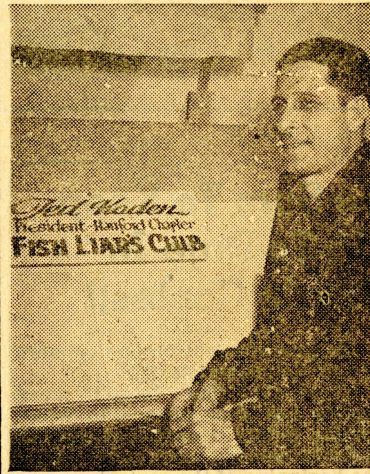


HE FOUGHT MAX BAER—

Howard Hicks of Central Shops was known as "The Rocky Mountain Kid." He was a pro boxer from 1929 to 1935, and fought Maxie in February, 1933, before the latter "won the belt" in August.

In 1930, Hicks won the Golden Gloves champ title. He also played 3 years of pro football with the Chicago Bears.

He's from Kansas City. He and Mrs. Hicks and their son live in the Trailer Village.



"FISH LIARS' PRESIDENT"

His fellow workers in the Sign Shop have unanimously elected Ted Kaden president of the Hanford chapter of the Fish Liars' Club.

They say he can tell the tallest ones they've ever heard. He's not from Texas, either; he's an Oklahoman. He spends his week-ends fishing, of course. Likes bass fishing especially, and hopes to catch some trout and steelhead.

He lives in Yakima, and commutes daily.



FORMER BOILERMAKER STAR A GOLF PRO—

Jim Zachary of the Hanford Housing department is an ardent football fan who used to be a player—and he follows the game (and all sports, for that matter) with great interest.

He played end for Purdue University Boilermakers in 1935, '36 and '37.

He and Mrs. Zachary live in Richland.



E. C. Whittaker spends his week-ends playing golf in Yakima. He's been a golf pro for many years now, and owns an 18-hole course in Topeka which is now closed for the duration of the war.

He's won the city championship in Topeka twice.

Mrs. Whittaker and their two sons, Bob, 15 years old and Bill, 14, live in Yakima.

Softball Season Is Delayed

Softball got off to a slow start due to sand storms and rain. However, with better weather it is expected to continue league play as scheduled.

Many of the players are to be commended for turning out in spite of bad playing conditions. At times the ball and third baseman were lost in the dust.

The Monday league games scheduled for May 22 were postponed and will be played at a later date. At this writing it is difficult to pick the better clubs, however, Mark Burlingame of the Mechanical Department will wager anything on his team. Mark has more players than any other team in the league and expects his team to be on top after the first round of play.

The Mechanical Department won from the Butchers 9 to 2 and the Stump Jumpers won from the Crane Department by a score of 16 to 12. The Olympic and Time Office workers won their games by forfeiture.

In the Tuesday league we expect a very close race between the Administration Riggers and the Hanford Fire Department. League games on May 23 were rained out, yet these two teams were on hand and won their games by forfeiture. These teams got together and in a practice game the "Fire Eaters" nosed out the Riggers one to nothing, when Tomazin poled a home run into right field. It developed into a pitcher's duel between Danny Welock of the Riggers and John Fatur of the Fire Department.

The game between the Dodgers and Layout will be played at a later date.

Games in the Thursday league have not been played due to failure of some teams to put in an appearance. No predictions now, but it looks like the Earth Worms will be the team to beat.

On Sunday, May 28, at 2:00 p.m. the Earth Worms will tangle with a team from the Pasco Naval Air Base. This game will be played in Hanford and for those who like their softball it should be interesting to watch.

Gasoline Ration-Sticker Check Due

A drive to check on the proper display on gasoline ration stickers which serve to identify the type of rations issued will be started soon.

Hanford SPORTS PARADE

Rigger Manager Is A "Long Hitter"



Danny Welock Has Never Hit Under .300 Any Year

If you have attended any of the Sunday baseball games you may have paid particular attention to that tall handsome guy who plays a lot of first base for the Crane and Rigger team—he is E. D. Danny Welock, team manager and player extraordinary.

Danny calls Milwaukee, home, and most of his experience in baseball has been gained in and around that famous "beer" city.

After spending several years in amateur leagues, Danny broke into organized ball with East Troy, Wisconsin in the Northern League—one of the mid-west's strongest semi-pro leagues.

In 1936 Danny went up to the Milwaukee Brewers of the American Association. He wasn't a regular but he did get into many games, principally as a "pinch-hitter." It was in this role in a game against Minneapolis that Danny received the greatest thrill of his life—hit a home run with two men on to win the game.

Known as a "long hitter" Danny has never hit under .300 in any one year, and in 1933 he hit a lousy .467, still high for amateur ball in Milwaukee.

Manager Welock has had a chance to observe all the teams in the Sunday league and he figures his Riggers will do all right for themselves. Thinks the competition will be very close and expects most opposition to come from Transportation and the Hanford Eagles.

Danny feels that the strength of his team will be in organization and balance, rather than individual stars. For the present, Danny's club will line up with Jack Seamas at shortstop. Danny says to watch this boy; he has real possibilities. Joe Thomas will hold down the hot corner and "Ripper" McGhee will round out the infield at second. In the outfield, Russel Cramer will be in left, Doug Mansfield in center field and Sherman Everett in right field. Everett is considered a hard hitter—opposing pitcher take note. Bob Manley, their catcher, is another hitter who on occasion can

Softball Standings

MONDAY LEAGUE	Won	Lost	Pct.
Mech. Department	1	0	.1000
Olympic	1	0	.1000
Time Office Workers	1	0	.1000
Stump Jumpers	1	0	.1000
Butchers	0	1	.0000
Fire Dept., White Bluffs	0	1	.0000
Hankee-James	0	1	.0000
Crane Department	0	1	.0000
TUESDAY LEAGUE			
Riggers, Administration	2	0	.1000
Fire Department, Hanford	2	0	.1000
Hanford Dodgers	2	0	.1000
Transportation	0	1	.0000
Layout	0	1	.0000
Riggers, Leazer Spur	0	1	.0000
THURSDAY LEAGUE			
Earth Worms	1	0	.1000
Sage Dodgers	1	0	.1000
Kettle Benders	0	1	.0000
Transportation	0	1	.0000
Riggers, 100-D	0	0	.0000
Riggers, 200-W	0	0	.0000

The A, B or C ration sticker must be displayed on the lefthand side of the rear window.

Holders of a B or C book as well as an A one should display only the former rather than both of them. Motorists are requested to check their ration stickers, and if they do not possess the right sticker to apply to the nearest ration office immediately.

Triple Tussle Opens Craft Ball Season

The local baseball season officially got under way last Sunday as a huge crowd turned out to watch the six craft teams battle one another in the opening games of the Hanford Sunday Baseball League.

Transportation led off by soundly trouncing the Hanford Bluejays 10 to 0 in the 10 o'clock morning game. Transportation had too much pitching and hitting for the Labor boys and the game was never in doubt after the first inning when Transportation scored two runs.

In the first afternoon game, the Labor Department avenged their stunning morning defeat when the hard-hitting fancy-fielding Hanford Eagles handed the Carpenters a 12 to 1 pasting, and thus established themselves as the team "to beat".

In the night cap, Utilites pushed across four runs in the fourth inning to defeat Crane & Rigging 6 to 2. This game was probably the best played contest of the day.

Opening Ceremony

A short ceremony preceded the morning game in which Lt. Col. F. T. Matthias, Area Engineer; Mr. G. P. Church, Field Project Manager; Mr. R. E. Johnson, League President, and a color guard from the U. S. Naval Air Base at Pasco, participated.

Colonel Matthias pitched the first ball and Mr. Church caught—it was a perfect strike and the fans gave the gentlemen a big hand.

Schedule for Sunday, June 4:

Carpenter vs. Crane & Rigging, 10:00 A.M.

Utilites vs. Transportation, 1:30 P.M.

Hanford Eagles vs. Hanford Bluejays, 4:30 P.M.

All games on the practice field, Avenue "B" and 7th Street.

Richland Softball

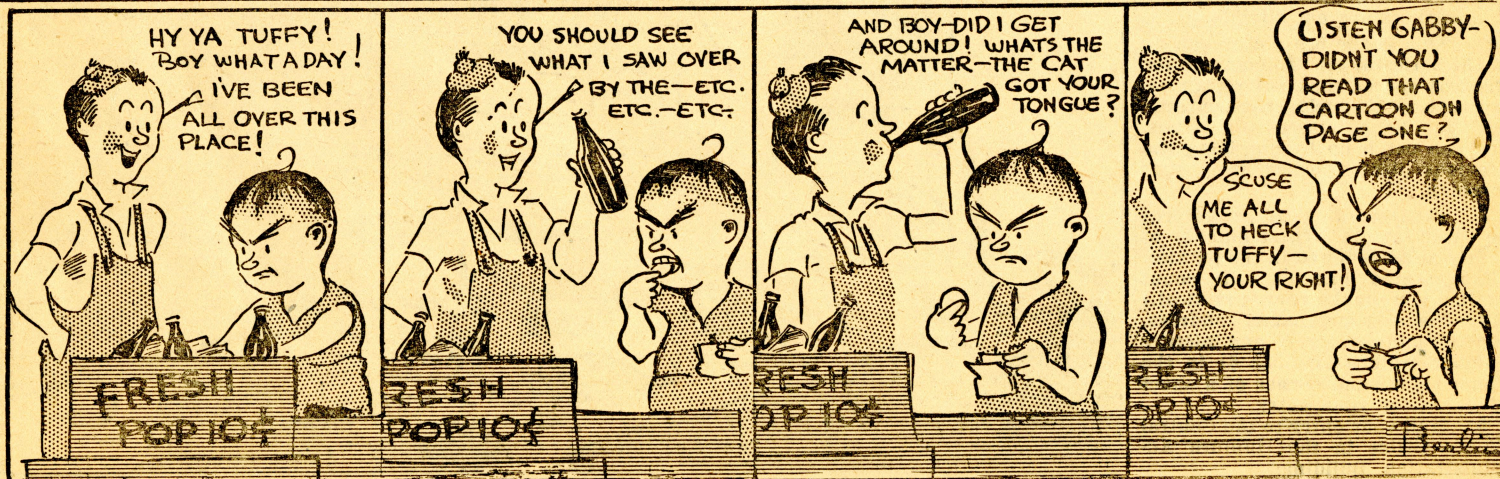
May 26			
Cafeteria	17	Layout	0
Stores	14	Area 145	3
Technical	1	Patrol	0
(forfeit)			
Coord'te Club 14		Engineers	12
(game called)			

hit the ball a mile. The Riggers are well off in the pitching department with three right handers; Johnny Rose, Ted Cornela and Harold Tucker—Tucker pitched for the Boston Red Sox in 1936-37.

SANDY SAGE

"YOU TELL HIM, TUFFY"

BY PAUL BERLIN



45 Seconds Later, The Fire Was Out!



The fireman in the background is turning on the twin fog nozzles which members of the Coal Creek station have developed to improve their fire-fighting ability.

No, this wasn't a disastrous blaze—it was part of one of the demonstrations put on recently by members of the Coal Creek Fire Department at their training grounds.

They developed twin fog nozzles which have several advantages.

These nozzles break up the water into small particles, protecting the firemen from the heat of the flames as well as having a smothering effect on the fire. "A blanket of mist" thus puts out the fire.

Water wouldn't ordinarily be used in extinguishing an inflammable-liquid fire; but with the use of the twin fog nozzles, excellent results were obtained, according to Chief E. W. Ullemeyer of the Coal Creek station.

Please Don't Make Unnecessary Calls

Whenever you start to pick up the phone, stop and think, "Is it necessary?"

In the United States today, our armed forces, our munition plants, the makers of trucks, and ships, and airplanes depend as never before, upon the telephone. Each of us can make a worthwhile contribution to the winning of the war by using our project phones only when absolutely necessary, and making calls brief and to the point.

Let's all do our part in "clearing the lines for Victory."

Church Services

Sunday, June 4, 1944

CATHOLIC

Rev. W. J. Sweeney Tent Theatre
Sat., June 3, Confessions 6:30 - 10 p.m.
Sun., June 4, Masses, 7 and 9:30 a.m.
Wed., June 7, 8:30 p.m. Confessions; 8 p.m. Novena; 8:30 p.m. Convert Classes.

UNITED PROTESTANT CHURCH

Rev. A. J. Blackmon United Church
9:45 a.m. Sunday School
11:00 a.m. Morning Worship
8:00 p.m. Evening Worship

CHURCH OF CHRIST

E. E. Mitchell, Minister White Chapel
12:30 p.m. Bible Study
1:30 p.m., Church Services

ASSEMBLY OF GOD

Service Grange Hall
10:00 a.m. Morning Worship
2:30 and 7:30 p.m. Services

LUTHERAN CHURCH

National Lutheran Council White Chapel
4:00 p.m. Sunday School
6:30 p.m. Worship and Communion

CHRISTIAN SCIENCE CHURCH

Parlors of United Protestant Church
Sunday, June 4, 1:00 p.m. Services
Wed., June 7, 8:00 p.m. White Chapel.

LATTER DAY SAINTS

Clyde F. Hansen, Pres. School Bldg.
10:30 a.m. Sunday School
7:30 p.m. Evening Service

COMMUNITY CHURCH

Colored 201 Recreation Bldg.
11:00 a.m. Morning Worship
3:00 & 8:00 p.m. Services

Ration Calendar

CANNED GOODS

Blue stamps A8 through Q8 in book No. 4 now valid indefinitely. (10 points each).

MEATS & FATS

Red stamps A8 through T8 in book No. 4 now valid indefinitely. (10 points each). U8, V8 and W8 become valid June 4.

SUGAR

Stamps No. 30 and 31 in book No. 4 valid indefinitely for five pounds. Stamp No. 40 valid until 1945 for five pounds home-canning sugar. Spare stamp No. 37.

SHOES

Stamps No. 1 and 2 on "Airplane" sheet in book No. 3 now valid indefinitely.

GASOLINE

Stamps No. 11 in A book valid through June 21 (three gallons each); B2, C2, B3, C3, R and T stamps, 5 gallons; D, 1½ gallons; E, 1 gallon.

Hanford Theater

Friday and Saturday, June 2nd and 3rd—
IN OLD CHICAGO, with Alice Faye, Tyrone Power and Don Ameche.

Sunday and Monday, June 4 and 5th —
FOUR JILLS IN A JEEP, with Carole Landis, Martha Raye and Kay Francis.

Tuesday, Wed., Thurs., June 6, 7, 8—
BUFFALO BILL, a technicolor picture starring Joel McCrea and Mureen O'Hara.

Business Schedule

(Closed Sunday unless otherwise indicated)

SHOPPING

	A.M.	P.M.
Alteration Shop	8:30	8:00
Apparel Shop	12:00	8:30
Barber Shop (Rec. Hall)	12:00	10:00
Barber Shop (Up Town)	12:00	10:00
Beauty Shop	9:00	9:00
	(Sat.)	9:00
Canteen	9:00	10:00
	(Sun.)	8:00
Drug Store (incl. Sun.)	10:30	9:00
Firestone Tire Shop	8:30	9:00
Grocery (Trailer Village)	10:00	7:00
Grocery (Up Town)	11:00	8:00
Hanford Shoe Co.	10:00	8:00
Laundry	9:00	8:00
Sears Roebuck	12:00	9:00
Shoe Repair Co.	1 to 5; 6 to 8	p.m.

SERVICES

	A.M.	P.M.
Bank,		
Mon., Tues., Wed. & Thurs.	3 - 8	p.m.
Friday	3 - 9	p.m.
Payroll Checks cashed Friday	1 - 9	p.m.
Bank closed Sat. and Sun.		

Express Office 10:30 - 8:00
(Closed 12:30 - 1:30 and 5:30 - 6:40 daily)
Western Union, (incl. Sun.) 8 a.m. - 12 p.m.
Notary Public, 4 to 10 p.m.; Sat., 4 to 8 p.m.
Library, Tues. thru Sat., 10 a.m. - 10 p.m.
Sunday, 1-6 p.m. (Closed Monday).

POST OFFICE

	A.M.	P.M.
Gen. Del. Mon. thru Fri.	10:30	9:00
Saturday	10:30	6:00
C.O.D. and Registry Window,		
Money Orders, Stamps, and Parcel Post.		
Monday thru Friday	8:00	5:00
Saturday	8:00	2:00
Extra hours Mon., Fri. only	6:30	9

Call 8661 for further information

HOW MANY SAFETY HAZARDS CAN YOU FIND HERE?

Send List For Picture 6 To Central Safety Office

Are you good at spotting hazards? If you are, maybe you'll be a winner of one of the 21 valuable prizes in this 10-week picture-puzzle.

Read about it on page 1 of this issue of the paper . . . then study the rules below:

CONTEST RULES

1. All field workmen (including sub-contractors) below the rank of foreman are eligible to enter. Office workers are not eligible.

2. This is the 6th picture-puzzle in the series of ten. To compete for the prizes, you must submit an entry each week during the contest.

If you have missed any issues, you can catch up by obtaining the previous picture-puzzles from your foreman.

3. The awarding of prizes will be based on the largest number of safety hazards found in the puzzles. (Exaggerated hazards will count against you—make yours practical.)

4. Place your name, address, payroll number, craft and picture number (this is number 6) in the upper right hand corner of a sheet of paper for your entry.

5. Mail your entry to the Central Safety Office in the Hanford Administration Building.

6. Decision of the judges is final.

