

# The SAGE SENTINEL

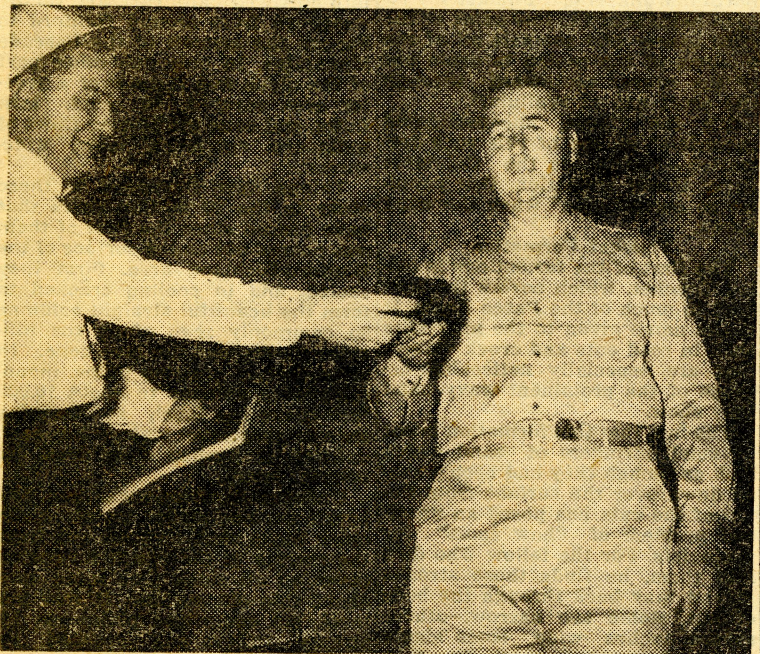
Published Weekly By and For Employees of Hanford Engineer Works By H.E.W. Employees' Association. Not To Be Mailed or Taken From The Area.

VOL. 1, NO. 35

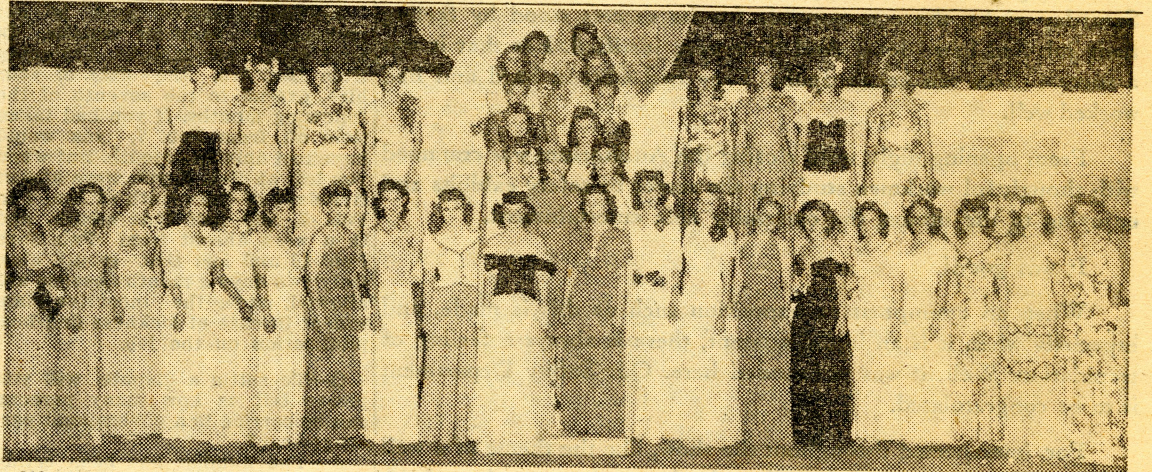
FRIDAY, AUGUST 4, 1944

RICHLAND, WASHINGTON

## PUZZLE WINNER; QUEEN ENTRIES HONORED



Concrete's Frank M. Hansen, above, is shown accepting the wrist watch he received as First Prize Winner in the Safety Picture-Puzzle Contest that recently ended its ten weeks' run in THE SAGE SENTINEL. Twenty-one prizes in all were presented to the contestants. B. F. Cleveland, Safety Education Department, made the presentation.



Week-long the 44 contestants for the "Queen of Safety" in the Exposition last week trailed across the Auditorium stage in glamorous file. Four girls were chosen as maids of honor to the queen by vote of the nightly audiences, but the entire list includes: Kathleen Armstrong, Receiving and Stores; Bobbie Bean, 100-D; Mary Birdwell, Expediting; Dorothy Brennan, Tavern No. 1; Mary B. Brown, Expediting; Shirley Bugh, Employment; Betty Bynum, Hanford Housing; Mary K. Christie, OCC Training and Relations; Mary Childs, Accounting Department; Shira Cook, OCC Canteen Depart-

ment; Claudine Dell, OCC Sandwich Shop; Lois Dickerson, Expediting; Darlyne Dowdy, All Crafts; Eleanor Ebenstein, Transportation; Geraldine Fleck, 105 Building; Trudy Fortin, Recreation; Maxine Hughes, Coordinate Club; Pat Jensen, Accounting; Helen Johnson, Traffic; Mary Kay, Time Office; Dolores Larsen, OCC Personnel; Verna Lindel, Personnel; Patricia Meek, OCC Accounting; Thelma Morgan, OCC Accounting; Ann Obredovich, Mess Hall No. 2; Mary Ogles, Mess Hall No. 3; Geneva Owen, Mess Hall No. 1; Betty Jeanne Palmer, Patrol Division Service; Gwen Parke, Newberry-Chandler & Lord; Christy Penuel, Purchase Order Audit; Ruth Rosenau, Eura's Beauty Salon; Mary Ardis Schmidt, Investigation; Beulah Setterholm, Hanke-James, Zahniser & Warren; Betty Jo Sheeley, Mess Hall No. 7; Hope Sloan, U. S. Government; Maxine Sutfin, Richland Special Construction; Ginney Tankersley, Engineering Services; Mary Lee Tanner, Investigation; Gladys Thompson, 105-D Area; Ellyn Viehover, Purchasing; Judy Watts, Housing; Gerry Wilkins, Mess Hall No. 4; Ruth Wilson, Purchasing, and Virginia Woodward, Housing.

### Players Re-Set Drama for Tomorrow Night at 8:45

"The Night of January 16th," production scheduled for last Saturday night by the Richland Village Players, has been postponed until tomorrow night. Reason for changing the date of the play, second production of the Village Players, was its conflict with the Safety Exposition held in Hanford.

#### All-Richland Cast

The play, which takes place entirely in a courtroom, has an all-Richland cast. Members for the jury will be chosen at random from the theater audience. The jury members, who will sit in the jury box on the stage during the entire performance, will decide the guilt or innocence of the defendant, Karen Andre, who is on trial for murder. For their efforts in deciding the verdict, the jurors will be refunded the cost of their theatre tickets.

The play, which starts at 8:45 p.m., will be presented in the auditorium of Columbia High School. Tickets may be obtained from members of the Players or from Richland Patrol for \$1.00. Those unable to purchase tickets in advance may buy them at the box office.

#### The Players

Cast for the play includes Clinton Henning as judge; Mrs. H. D. Riley as Karen Andre, the defendant; Sgt. Phillip Kelleher as Prosecuting Attorney, and W. H. Clymer as Attorney for the Defense. Mrs. W. H. Clymer, Mrs. J. M. Beard, Major K. M. Gillette, Capt. J. S. Barrish, Mrs. K. M. Gillette, Mrs. J. W. Brands, Paul Nissen, Mrs. W. W. Campbell, Jr., Mrs. R. M. Maguire, Mrs. Jack Holt and Al Jervise complete the cast. The play is under the direction of Hayden Rector.

### 'State Wealth' Tuesday Talk

"Washington's Wealth," or "How the Pacific Northwest Makes Its Living" will be the discussion topic Tuesday at 8:30 p.m. in the Columbia High School Auditorium for the fourth in the Richland Summer Forum Series.

#### Post War Outlook

Dr. Hoyt Lemons, Assistant Professor of Geography and Supervisor of Army Geography Training at Washington State College, will lead the discussion. His lecture will cover the industries of Washington State beginning with those of the lower Columbia, the economic geo-

### Village to Get New Churches

Construction will begin in several weeks for two new churches in Richland Village. The churches, one for United Protestants and the other for Catholics, were designed by the Corps of Engineers and will be located on Stevens Drive near the new Grade School Building. Completion is expected in early fall.

graph of this region, and the post-war outlook for the Columbia Basin's power and irrigation projects. A special forum bus will leave the bus lot across from the Groceries at 8:20 to enable Village residents to attend this discussion.

### Jaycees Move For Community Progress Plans

A smoker for members and guests was held last week by the Richland Junior Chamber of Commerce. Guests included W. O. Simon, plant manager, and E. E. Swensson, production manager.

C. L. Huff was elected to represent Richland on the State Board of Directors for the Washington State Junior Chamber of Commerce.

The Richland Junior Chamber of Commerce, with the cooperation of the Village Department and the various youth organizations, is sponsoring a Scrap Paper Drive which will start Monday. Paper is urgently needed in the war effort and Richland residents are asked to help in this drive. Paper will be collected by the youth organizations.

#### Softball Tournament

With the cooperation of the Hanford Recreation Association and the Village Department of Richland, the Junior Chamber of Commerce will sponsor a softball tournament between the two winning teams in the Hanford tournament and the two winning teams in the Richland League. Further details concerning date and time and place of the games will be announced later.

The Richland Junior Chamber of Commerce invites anyone interested in joining their group to contact Capt. M. K. Barrett, Hanford 8178; John Moffit, Hanford 8147; W. S. Roe, Richland 11, or B. R. Hennigar at Richland 519 for further information.

### Square Dance At Hanford

The first of a proposed series of Square Dances is to be presented at the Auditorium Tuesday night from 8:30 until midnight. Music will be by "Ava's Whoopies," a seven-piece square dance band whose last appearance was at the Safety Exposition.

"If the crowd warrants further dances," the announcement reads, "they will be held each Tuesday night thereafter."

Admission charges will be \$1.00 for gentlemen and 50 cents for ladies.

### Safety Exposition Finishes Successful Week's Program

Bowing out with a fanfare of beauty and music the Safety Department's Exposition came to a close last Saturday night, after a phenomenally successful week's run.

Held in the Auditorium, the exposition was an ingenious and carefully contrived display, approaching its focal point from many ways.

The show's climax was reached with the selection of the Queen of Safety. Throughout the week the 44 original entrants had become known to their audience and a favorable reaction was noticed when the five who had been elected as finalists made their appearance for choice as queen by Jan Garber's band.

#### Select Queen

The eventual winner, Corp. Hope Sloan of Middletown, Ohio, a member of the Women's Army Corps, stationed at Richland, was greeted

by a tumultuous roar of applause as she ascended the stairway leading to the stage. In her trim uniform, the young lady had poise and patriotism to back her and win the title. Maids of Honor to the Queen were: Mary Kay Mikesell, representing Time Office; Eleanor Ebenstein, Transportation and Labor; Bobbie Bean, 100-D Area, and Darlyne Dowdy, All Craft Departments. The Queen was presented a cash award and, as were her maids, a loving cup and corsage attesting her triumph.

Throughout the week the exposition played to capacity crowds. Door prizes of a \$100 War Bond were given nightly with the following announced as winners: Bessie Mae Trout, I. Dexter Brown, Rose Marie Dresback, John B. Lester, Emigene Mary Lazard and LeNore M. Phelan.

#### Transportation Awards

The Transportation Department, on Friday night, presented a representative group of 25 of its eligible drivers with Safe Driver Pins.

Housing, which produced the entertainment, presented a variety of talent ranging from spiritual singers through jitterbugs and hillbillies, all being introduced by Nick Nicholson, Master of Ceremonies. The H. E.W. band was under the baton of Paul Clark. Music by Lindy, a popular organization, made several appearances with such specialists as Stanley Hanson, Johnny Giles, and Lorraine Lehr rendering interpretations of their talent. The Naval Air Base Band from Pasco gave concerts.

The booths, lined along the sides of the Auditorium, were instructive and impressive with the judges, Col. F. T. Matthias, G. P. Church and T. L. Pierce presenting a plaque to Crane and Rigging, and a similar one to the Fire Department for "most meritorious and outstanding" exhibits.

Awards in the Safety Picture Puzzle contest which ran in the SAGE SENTINEL for 10 weeks, were made with Frank M. Hansen of Concrete winning first prize, a watch. Additional prizes which included radios, war bonds and pen and pencil sets were presented the following: Chris Christiansen, W. D. Tynner, Frank Green, Wm. Rogers, Roy O. Warren, Robert Lee Smith, Ira F. Ward, M. G. Heath, and Ernest W. Spears. Additional minor prizes were given eleven other contestants.

### The Queen



Corp. Hope Sloan of the Women's Army Corps was winner in the Queen of Safety parade last week at the Safety Exposition. She appeared nightly in her OD uniform along side the ruffles of other entrants and Saturday night was crowned queen by Jan Garber at the weekly dance.

### Set Highest Presentee Rate In History of the Project

Advancing in its control of absenteeism, like the best-trained army, the project for the fifth consecutive week has raised its number of presentees to a new high.

With the absentee percentage at 6.4 for the last week tabulated, this record surpasses the previous mark of 6.7 per cent.

#### Bricklayers Top

The Bricklayers continued to set the pace with 4.6 per cent, but were closely trailed by Transportation, 4.8 per cent, and Riggers and Earthworks tied for third with 5.1 per cent. Five crafts improved their

standings: Labor, Concrete Labor; Electrical, Mechanical and Earthworks.

The complete standings: first, Bricklayers, 4.6 per cent; second, Transportation, 4.8 per cent; third, Rigger and Earthworks, 5.1 per cent; fourth, Carpenter, 5.6 per cent; fifth, Electrical, 6.4 per cent; sixth, Carpenter Labor, 6.8 per cent; seventh, Reinforcing and Labor, 7.2 per cent; eighth, Piping, 7.4 per cent; ninth, Paint, 7.9 per cent; tenth, Mechanical, 8.6 per cent; eleventh, Concrete, 9.1 per cent, and twelfth, Concrete Labor, 10.2 per cent.



# THE SAGE SENTINEL

"Let's All Hew To The Line!"

Editor Helen D. Wiederrecht

Vol. 1, No. 35 Friday, August 4, 1944

Editorial suggestions and contributions should be sent to the Editor, Information Service Building, handed to your foreman, supervisor or placed in suggestion boxes. Deadline for all copy is one week previous to publication. Phone Extension 8661.

Copyright, 1944 by Hanford Engineer Works. The information contained in this publication shall not be communicated to the public or press. Requests for permission to reprint any or all of the contents must be made in writing to the Management, Hanford Engineer Works, P.O. Box 429, Pasco, Washington. No advertising can be accepted.

## A Bow to Safety

Seeing the curtain bring a close to the Safety Exposition last Saturday night, those responsible for its success stood by feeling their job had been done. And they were justified. For that it was a success there can be no doubt. They had worked hard and had worked well.

From opening night until closing the Auditorium was crammed with thoughtful workmen studying the scores of safety exhibits and enjoying to the utmost the extremely able entertainment.

It was good!

When an attempt at an exposition such as this is made, and especially when it is an initial attempt, there is always a feeling of trepidation. Well, it was unfounded here. Our Safety Department is to be congratulated.

For, interspersed throughout the show, like the theme of a well written air, there came again and again the somber meaning of the production: Safety! And it struck home. Sometimes gruesome, oftentimes humorous but always the same, the reiteration: a careful workman is a safe one!

If there were any imperfections in the timing, execution or staging they were unnoticeable and far overshadowed by the genuine results obtained.

Yes sir, congratulations; and a low bow from the waist!

## Sugar Is Sweet

Some months ago, as most of us remember, the Mess Halls offered us sugar just once daily. Then, at a later date, it appeared at both our morning and evening meals. And we welcomed it with a smile and said: "Hello, friend, look who's back from the war!"

But it wasn't that at all. Sugar, like many commodities, is rationed. Olympic had built up a bit of reserve and felt that by judicial handling on the part of the customers and of management it was justified in offering it twice daily. So it would have been. For all known factors were there: the amount of sugar allocated by OPA, number of men and women to be fed and the average persons consumption per person per meal.

There was another factor though—one that couldn't be foreseen. And it is this that is causing trouble.

Some, not satisfied with having an unapportioned supply set before them, have taken to filling sacks or other containers and totting it off. Well, that's bad.

But, the commissary doesn't really mind. Least of all does the OPA. For, as above, there is just so much allocated. Squander it or use it normally it's all the same to them. When it's gone, it's gone, "that's all there is, there isn't anymore."

So, in analysis, it is only those who eat there who are hurt. If some joker next to you takes your next week's supply he is, literally taking your food from your mouth. Tell him about it.

And if you don't, rest assured once again your sugar will go back to war!

## That Old Time Pep

Just recently made with industrial workers in England and verified by experiments in America show that people who use insufficient salt often suffer from a sleepy, drowsy feeling, loss of alertness, and inability to concentrate.

Such people are three or four times more apt to have more accidents than people who get enough of this mineral. Also complete lack of salt for eleven days made otherwise robust men breathless and weak after climbing stairs. So, when your ambition turns to jelly, your feet are unmanageable and your mind functions off-beat, you may recapture that ebbing energy by simply taking a salt tablet to regain that old time pep.

## 'Barracks Sage' Knows All About Safety Rules

If any of you has heard this one, I guess it won't hurt you to laugh again with them that hasn't.

A Carpenter Proctor was corrected a little guy from down southeast always 'count of his packin' a 16'0" 2"x6" by hisself an' almost bumpin' another guy's head with it.

The Proc says, "You danged near knocked an' ear off that guy. How'd you like to have an ear knocked off?" Little guy says, "Don't calculate I'd be able to hear so good, I

reckon." Proc says, "You danged right you wouldn't. Then some fine day you might have an accident agin an' lose the other one. Then what would you do?"

Little guy says, "Guess I wouldn't be able to see so good, no doubt." Proc says, "You're talkin' nonsense, man. Why would losin' both ears have anything to do with yer eyes." An' the little squirt says, "Cause my danged safety hat would drop down over 'em, that's why."

## Question Box

(You may send in any question relating to the problems of project employees and it will be answered in this column. Address THE SAGE SENTINEL, Room 305, Training and Relations Building, Hanford.)

Q—I went to work for this company on Dec. 7, 1943. On Feb. 3, 1944 I was called home on account of sickness in my family and returned on Feb. 16. I have been informed that I have lost two months on my incentive plan. Will you explain to me how this can be so. I was only out during February and believe that I should lose only one month. Arthur B.

A—The incentive plan is not reckoned by calendar months. In your case, your months, beginning from Dec. 7th, the date of your hire, extend to the seventh of the following months. If you had taken time off from Feb. 7, you would have lost only one month. But when you left on Feb. 3, you were absent five days of the month of Jan. 7 to Feb. 7, and lost that month, and then were absent from Feb. 7 to Feb. 16 and lost that month also. Only two days a month absence are allowed, under the incentive plan, except in case of sickness and hospitalization on the job.

Q—To settle a dispute, will you please tell us how many persons can be carried in a government passenger car?

A—The number has been established as follows: Six persons, including driver and two passengers on front seat. If there are five persons, it is better to have driver and one passenger on front seat.

Q—What is the route from Hanford to Sunnyside? Miss K.

A—Take the road to Yakima and the Sunnyside road turns left at a point about 25 miles from Hanford. You will find the route clearly marked by signs.

Q—Somebody has told me that employees on this project are now entitled to shopping gas. How do you go about getting it? N. L.

A—Go to the Rationing office in the Housing building, opposite the Administration building where you will be given a form to fill out. With this form you file your tire inspection record, which will be returned with the gas coupons. You will be granted additional gas coupons of 225 miles a month, and a three months supply of coupons will be given you, for a total of 675 miles.

For the convenience of all employees on this project, an INFORMATION SERVICE office is open from 8 A.M. until 9 P.M. every day except Sunday. It is located in the TRAINING and RELATIONS Building, opposite the Time Office, on B Avenue. Go there at any time when you need help.

## Shopper's Guide

### Hanford Clothing Store

Of definite interest to the stronger sex is the men's clothing store here. Everything for the gentlemen from 'dress-up' to work clothes. They have a nice selection of straw hats and also swimming trunks in all sizes and colors.

### Shoe Store

A complete line of children's shoes with some non-rations for boys and girls. You can find ladies' dress shoes, sandals, pumps, women's safety shoes, men's dress and work shoes and a good stock of ladies' house slippers. Come by for a good fit.

### Jewelry and Watch Repair Store

Need that watch repaired? Tired of your old costume jewelry? Come by the jewelry store and look over their list of selections. You will be able to find gifts for men and women on display.

### Hollywood Shoppe

Something new on the floor every day. All that's needed for the ladies' including coats, suits, dresses, purses, evening dresses, raincoats, hosiery, anklets, footlets, lingerie—also bras and girdles, slacks suits, riding pants and a wide choice of play clothes. Try here before going out of Hanford.

### Beauty Shop

Beauty aids are needed in Hanford more than elsewhere because of sand and sun. For a good "morale builder" try a cold wave permanent.

## Accidents Help The Axis

# Who Knows — Maybe These Winds Have Something to Blow About Besides Sand

So you don't like sand?

Well, sand around here is just "the superficial cover of silt on top of the basalt, the uppermost hard rock formation in the Pasco Basin"—that's what Harold E. Culver, Supervisor of the Division of Geology at Washington State College, says.

Culver knows a lot about "below these sands." He says:

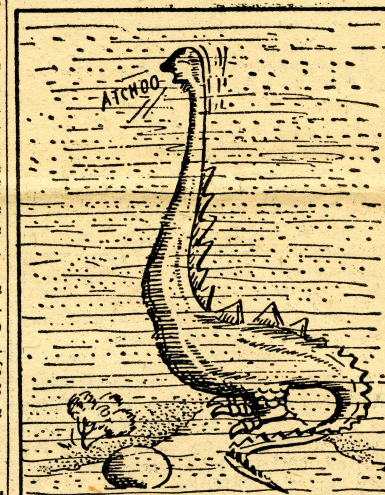
"The geology of this vicinity may be understood most easily if the whole region between the project and Yakima, Wenatchee, Spokane and Lewiston is considered as a very shallow saucer made of rock, which has been tipped up on the north margin. This tilt makes the region hereabout the low point of the rock saucer and compels all of the streams of the region to drain out of the saucer southward through the great gap at Wallula."

It's the "loose, unconsolidated materials" on top of this rock formation—known as the Columbia River basalt formation, that supplies so much "sand" when the wind blows.

### Touchet Formation

The first of the formations is called Touchet, which covers the lowland in much of the Pasco Basin. It is the name given to the gray silts seen in road cuts and creek valleys that are especially noticeable because of the prominent wavy band they show.

The fact that this formation is cut by small stringers of sand which look as though they had been washed down over the surface from the top of the cuts has posed an unsolved problem of "how come" for geologists. For the fellow who digs into them, he finds these streaks extend 'way back through the beds of silt. Some are narrow, others several inches wide, some single and in places there are groups that branch out from one another. Geologists have been trying to find out how the cracks came to be there and how the sand was washed down into them after they were formed.



A BRONTIHOZIS IN A SANDSTORM-500,000 B.C.

### Bluffs Geology

Next older than the Touchet beds is the much thicker and more prominent formation which makes up the bluffs across the river. These beds near Hanford are over 500 feet thick and are composed of yellowish gray silts and sands, some of which are quite coarse. These beds have special interest for the geologist because they have great numbers of fossil bones of prehistoric animals, such as ground sloth, horse, camel, deer and others, including a rabbit-like form not well known to science. Most of these have been found in the beds halfway up the bluffs.

### Palouse Country

The next oldest formation in the Pasco Basin and this region generally is the great blanket of yellowish brown clay with the top soil of black earth, which extends far and wide throughout the famous Palouse wheat country of Washington. It once covered the whole Palouse country like a blanket, some hundred or so feet thick. Erosion by streams has since carved out the gently sloping Palouse Hills, but the formation can be seen in many road cuts where it stands in nearly vertical walls.

The formation is puzzling to geomorphologists. Some have said it was formed from decomposed lava rock, others that it was glacial rock floor ground up by the moving ice as in a great grist mill. In places it seems to have been blown in by the wind, and it is a fact that millions of tons of it can be examined over many square miles of the Palouse country without finding a pebble the size of your finger.

### Columbia Basalt

Below these three formations is the Columbia River basalt which is called the Columbia Plateau. The basalt formation is over a mile thick right here below us and it

extends northward past the Columbia, eastward into Idaho where it laps up on the outlying ranges of the Rockies, southeastward and south clear across Idaho into Nevada, south from here across Oregon into northern California, and finally westward from around Hanford to beyond the summit of the Cascade Mountains. In only one other part of the globe was there ever a greater area covered by such lava flows, and even the Deccan flows of India are not much more widespread.

Things have happened to these rocks in the 20 million years that have passed since the first of them was poured out on the surface of the Hanford-Richland area. First they cooled, and in cooling cracked to form the beautiful straight columns so commonly seen along the hillsides throughout the lava zone. In some sort of growing pains, mountains were uplifted to about 10,000 feet above sea level, so that the once original level plateau has been uplifted or pushed down from its original level.

Underneath these rocks is a pre-basalt surface made up of much older rocks such as peek out from the margin of the basalt formation cover on all sides. One thing sure about this old surface, it was not level, but comprised plains cut by stream valleys and studded by mountains over a mile high.

Within the part of the Columbia Basin roughly indicated by the course of the river between here and the Spokane country, the cover of loose mantle rocks has largely been stripped off in great long inter-lacing valley tracts. These are the famous coulees of the State and look as though some sabre-tooth tiger of Paul Bunyan proportions had clawed through the soil and dirt to the bed rock beneath. This scarred type of landscape is known out here as the Scablands. Each of these long tracts is indeed the site of river action on a large scale. The upstream ends, in every case lead to the southern limit of the glacial ice which covered the northern part of the State, so there can be no doubt but that they served as waterways for the escaping melt-water from the glaciers.

### The Grand Coulee

A hundred miles to the northwest is the greatest of these old waterways, the Grand Coulee, some fifty miles long and a thousand feet deep. This is a great gash cut in the basalt rocks by ancient waters, now almost dry except for a dozen relic lakes.

About midway in its length, the Grand Coulee is interrupted where one of the upwarps of the basalt mentioned before crosses its path. In ancient times the waters, escaping from the upper coulee spread widely over several hundred miles of level lying country only to reach the brink of a 400-foot cliff and from there cascaded into the lower coulee.

West of Grand Coulee for a number of miles is the region of the "haystack" rocks. These are great masses of rock plucked by the ice from the uneven surface of the basalt formation and carried considerable distances southward toward the margin of the glacier. They are found on both sides of the Columbia River in this area and give a good idea of the vigor and strength of the action of the great masses of ice that overwhelmed this part of the State.

From any of the higher elevations of the Cascade Mountains, the view of the surrounding country reveals a uniformity of summit elevations for the major part of the range which is as significant as it is surprising.

In some places along the Cascades there are marked interruptions in this accordance of summits. It is evident from observation that these great masses of volcanic rock comprising these not-so-old volcanoes lies on top of the old smooth plain and are in no real sense a part of the Cascade Range proper. Also, they had scarcely cooled off before the Ice Age, and so, almost as soon as formed, their erosion by glaciers began.

Beneath these sands—and above them too, are to be found clues to the whole history of the geology of some of the most attractive vacation country to be found in the United States.



BOXING BOUTS MOVED TO MONDAY NIGHT

Isaacson Iron Works Team Take Two of Three Games

Living up to advance press notices, the Isaacson Iron Works of Seattle won two games from the Hanford ALL-STARS last Saturday and Sunday to cop the three game series.

Isaacson presented a well-drilled team and left no doubt in the minds of everyone who saw them play that they are truly a great semi-pro team.

**Stars in Glory**

Our own Hanford STARS came in for their share of glory, too. By beating Isaacson 9 to 4 in the first afternoon game on Sunday, the Stars gave a real exhibition of baseball and the huge crowd in attendance showed their appreciation with some lusty cheering throughout the entire game.

Isaacson won the Saturday Twilight game 8 to 0 behind the airtight pitching of Frank Kulick. The ALL-STARS started Jim Pollard, Transportation, on the mound, but big Jim was driven to the showers in the very first inning. The Ironmen scored six times in that big inning and that was more than enough to win the game. Lolly Mathews, Utilities, relieved Pollard and pitched nice ball after the first inning. He was hit hard on several occasions but was given excellent support and permitted only two runs after the disastrous first inning.

Totals on Sturday's game:  
ISAACSON 6 0 0 0 1 1 0 8 14 0  
HANFORD 0 0 0 0 0 0 0 7 3

Team Good

Elmer Hester, Hanford Eagles, pitched beautiful ball to lead the STARS to their triumph in the second game. Hester was very fast and outside of being a little wild—he walked 8—he was never in serious trouble. The team as a whole played brilliantly. Their fielding hitting and base-running was strictly high-class.

The STARS pounded pitcher Bill Funk for fifteen safe blows and gave Hester a two run lead in the first. Seamas, Riggers, led off with a walk. Luke Clark, Eagles, singled and was thrown out at second when he tried to stretch his hit to a double. Seamas went to third. Jack Cawood, Transportation, blasted a triple over the left fielder's head, scoring Seamas. Cawood then came home on a wild pitch. The STARS

scored again in the fifth to take a 3 to 0 lead. The tough visitors tied up the game in the seventh when with the bases loaded big Joe McNamee, catcher, smacked a double, scoring all runners. The STARS came right back in their half of the seventh to score five times to put the game on ice.

Alexander led off with a single. Hester singled, Seamas bunted and reached first when the pitcher juggled the ball, filling the bases. Clark singled to score Alexander and Hester. Dave Showker, Utilities, pinch-hitting for Danny Welock, hit a long triple to right center to score two more runs. Showker scored on Courteau's long fly to right field.

**Dutch Nebenfuber**, center fielder for Isaacson, ended the scoring when he hit the first pitch in the ninth inning over the right field fence for a home run—the third home run ever hit in the Hanford Park.

Hester allowed only six hits and struck out seven.

**Lose Two**

Isaacson won the last game by a 7 to 3 score. Both teams had seven hits but faulty fielding by the STARS probably cost them the game. Jack Warner, Carpenters, started for the STARS, but was having trouble with his control and was relieved by Orel Courteau, Transportation in the sixth. Both boys gave a creditable performance against the hard hitting Isaacsons.

Jack Seamas with three for three, and Jack Cawood with two for three, led the STARS offense in this game.

Lutheran Women's Guild In Meeting on Tuesday

The Women's Guild of the Lutheran Church will meet in the Park at 2:30 p.m. Thursday. Mrs. J. M. Grimsrud will be hostess.

The choir will practice every Thursday evening at 8:30 in the United Protestant Church.

Softball Managers Meet Tonight to Plan Tourney

There will be a meeting of all softball managers this evening at 7 p.m. in the recreation office, Hanford Housing building.

Plans for a softball tournament in Hanford will be discussed at this time.

First Half Champ Play Ends Sunday

Now that the All-Star Games are out of the way, Hanford's league teams settle down to the serious business of determining the winner of the first half of the schedule which ends Sunday.

Three at Top

Three teams, Riggers, Transportation and Utilities all have a chance to win or share the first round championship.

Big game for Sunday will be the 4:30 p.m. meeting between the Riggers and Transportation. If the Riggers win this one they will be undisputed champions of the first half. However, if Transportation wins they will share first place with the Riggers, and Utilities will also have an opportunity to share first place if they can get by the Hanford Eagles when these two teams meet in the 1:30 p.m. game.

Cellar Battle

In the 10 o'clock morning game the Hanford Bluejays will battle the Carpenters—not for any championship but to get out of the league cellar. These two teams are greatly improved and we look for a very close ball game.

Schedule for Sunday

10:00 A.M.—Carpenters vs. Hanford Bluejays.  
1:30 P.M.—Hanford Eagles vs. Utilities.  
4:30 P.M.—Transportation vs. Crane & Rigging.

Set 10-Round Main Event; Four Others in Auditorium

Joey Dolan, who fights Ollie Craven in the ten-round main event Monday night at the Auditorium, will bring to Hanford an outstanding ring reputation.

Need Umps For Games

Due to several members leaving, on vacation and inability to umpire Sunday baseball games, the Hanford Umpire Association is putting on a drive to recruit new members.

Anyone interested in umpiring some of the softball or baseball games here at Hanford may join the association.

Information regarding joining the Umpire's Association may be had by contacting J. E. Carter at the Recreation Department office in the Hanford Housing building, or phoning 8442, or attend the Hanford Umpire's Association meeting in the baseball park at Fifth Street and D Avenue at 7:30 p.m. each Friday.

League Standings

	W	L	Pct.
Riggers	7	2	.777
Utilities	6	3	.667
Transportation	6	3	.667
Hanford Eagles	5	4	.555
Carpenters	2	7	.222
Hanford Bluejays	1	8	.111

Because of conflicting dates and laws of the State, the Boxing bouts originally scheduled for Sunday have been moved to MONDAY NIGHT.

Although not ranked nationally, he is considered by boxing critics to be the best featherweight in the Pacific Northwest. Dolan is very fast, and for a little guy, packs a surprising amount of power in either hand. Taking on all comers for the past two years, Dolan's record speaks for itself. To mention a few of his most recent fights: Beat Dick Matheson, KO 2nd; Billy Webb, KO 5th, Buddy Spencer, KO 4th, Babe Fenton, KO 2nd. Won round decision from Earl Bergstrom, Pee-Wee Lewis and Joe Robeto. Probably his most outstanding ring achievement has been in beating the veteran, Nate Corum—Dolan has done this no less than three times in the last year.

Strong Opponent

Dolan's opponent for Monday night, Ollie Craven, has a very good ring record, too. However, most of fighting has been back in the Midwest and East.

Bud Oliver of Spokane, matchmaker for this show, announced this week that Craven will enter the ring outweighing Dolan by about five pounds. This weight advantage may prove troublesome for Dolan.

The four supporting bouts are all attractive and should provide swell entertainment for boxing fans of Hanford.

Supporting Bout

In the 8-round semi-windup, Eddie Weller of Portland will box Earl Moore of Spokane. These two boys have met once before with Moore winning a very close decision. Weller, who is a full-blooded Indian, has lost only two fights in his professional career; he has won 18.

In a special six-round event Frankie Kimbal, 156 of San Francisco will meet Irish Roy Dunn, 162, of Portland. There will be two four-round preliminaries.

The first preliminary will start at 8:30 p.m. and the doors to the Auditorium will be open at 7:30 p.m.

Admission Charge

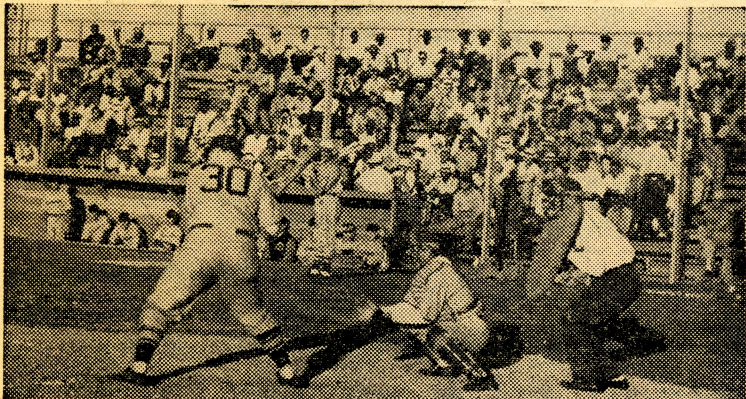
Admission will be \$1.00 for all seats and there will be no advance sale.

Plans Regular Boxing Bouts

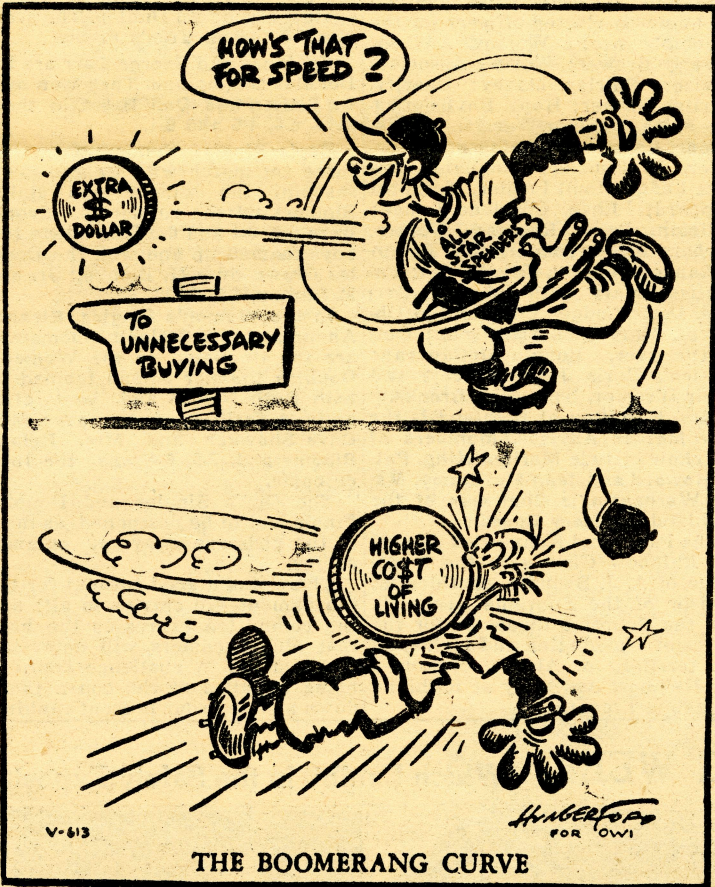
Due to the unusual amount of interest in boxing, the Recreation Department of H.E.W. is anxious to get a boxing program going in full swing. The department is equally interested in lining up boxers with and without experience—willingness to represent your club or department is all that is necessary.

Those interested should contact Glenn Shuler, Recreation Department in the Hanford housing building either in person or by telephoning 844.

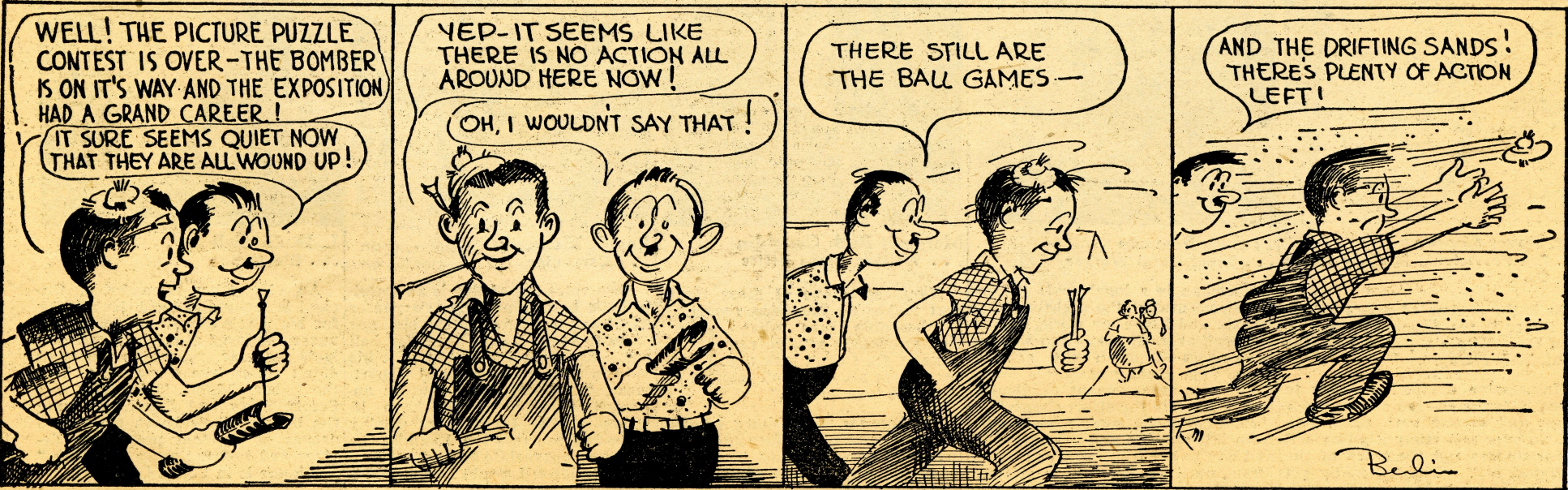
Isaacson Battle



The tough Iron Works team from Seattle took two of the three games to take the series last Saturday and Sunday. It was a hard-fought meet, with record crowds lining the bleachers. The picture above was taken during one of the Hanford ALL-STARS and Isaacson Iron Works games.



SANDY SAGE: There's Always Something!





## Pfutzenreuter Named Co-Ordinate Club Prexy

Following a recent election of officers, the Co-ordinate Club of Richland Village has named Henry Pfutzenreuter as President. Other officers are: D. I. Graham, Vice-President; C. J. Adolph, Secretary; and J. J. Wilson, Treasurer. The Co-Ordinate Club was organized in Richland a year ago to provide entertainment and recreation for its members and residents of the Village.

Any person living in Richland or in any way connected with the project and who is interested in the Co-ordinate Club, may make application for membership through the officers named above or other members.

## Richland Departmental Softball League

### August 4

Coordinate Club vs. Stores, Dorm K-8 Field.  
Layout vs. Patrol, Dorm K-8Y Field.  
Engineers vs. Area 145, Cemetery Field.  
Drug Center vs. Technicians, Old High School Field.

### August 8

Technicians vs. Layout, Dorm K-8 Field.  
Stores vs. Engineers, Dorm K-8Y Field.  
Patrol vs. Coordinate Club, Cemetery Field.  
Area 145 vs. Drug Center, Old High School Field.

## Richland Softball League No. 2

### August 10

Accounting vs. Wolves, Cemetery Field.  
300 Area Maintenance vs. Service, Dorm K-8Y Field.  
Engineers vs. Clerical, Dorm K-8 Field.

### August 14

Clerical vs. Accounting, Cemetery Field.  
Engineers vs. 300 Maintenance, Dorm K-8Y Field.  
Service vs. Wolves, Dorm K-8 Field.

## Change Location of Girls' Supervised Playground

Beginning today, the Girls' Supervised Playground will be changed from its present location, Cemetery Field, to the new, grass playground at the Grange Hall, corner of Stevens Drive and Van Giesen Street.

Supervised play is held on Mondays, Wednesdays and Fridays at 10 o'clock. The girls' games include volley ball and softball. All girls are invited.

## Red Cross Asks Help In Keeping Its Records

Now that the Richland streets and houses have been renamed and renumbered, the Richland Red Cross asks its volunteer workers to come to the chapter house and leave their new addresses and telephone numbers there. The present addresses on file now are out of date and cause considerable delay and difficulty in contacting workers.

## Richland Safe Driver



Richland Village's Safe Driver of the Week is Mrs. P. P. Davis, 1425 Haupt Avenue, who is the wife of Dr. Davis, a dentist on the project. Mrs. Davis has been in Richland for 11 months, coming here from New York City last August. Safe driving is imperative in a community with as many children as Richland, Mrs. Davis believes, and credits her driving ability to the fact that she enjoys it immensely. Caution and obeying all traffic rules and regulations are also important. For her award she was given two tickets to the Richland theatre.

## Village Rainbow Girls Elect Officers for Semi-Monthly Meetings

Richland Rainbow Girls have organized in the Village and are holding regular meetings twice monthly.

The newly-elected officers for the Assembly are: Worthy Adviser, Beverly Brewer; Worthy Associate Adviser, Shirley Maxey; Charity, Marilyn Garner; Hope, Phyllis Cason; Faith, Marilyn Wermertin; Recorder, Rosemary Thompson; Treasurer, Jo Flusher; Chaplain, Barbara Lodge; Drill Leader, Margaret Clippard; Love, Charlene Lange; Religion, Patsy Rogers; Nature, Barbara Riley; Immortality, Roberta Lange; Fidelity, Kay Adams; Patriotism, Mary Ruth Johnson; Service, Doris Lodge; Confidential Observer, Mary Lou Armstrong; Outer Observer, Bonnie McGauvran; Musical, Doris Jean Muncey, and Choir Director, Irma Jean Brooks.

Mrs. Hamilton of Richland is the new Mother Adviser. Members of the choir include Marilyn King, Patsy Howard and Jean McKinney. Major Wernertin is Chairman of the Richland Advisory Board.

The Pasco and Kennewick Assembly Rainbow Girls with the Assistance of A. J. Swindle, confidential advisor of the Supreme Assembly and the Supreme Inspector for the states of Washington and Idaho and the territory of Alaska, organized the Rainbow Assembly at Richland Village last month.

## Crown Tennis Champs Of Richland Matches In All Departments

Tom Mangold is the Men's Singles Champion of Richland Village. He played a well planned match against steady Ed Dunlop. The score was 6-3, 6-2 in Tom's favor.

Ed Jones and George Barr are the Doubles Champions. They won over A. Ricker and Don Berst in three sets, 6-4, 4-6 and 6-1.

Boy's Singles Finals was also a three set match with George Sraneschini the winner and Ralph Bloomstand the runner-up. Scores were 2-6, 6-4 and 6-2. The above two boys teamed up and won the Doubles Crown over H. Blouvelt Jr. and E. Larson, 6-0, 6-1.

In the Women's Singles, Eleanor Anend and Mrs. Roland Bloomstand are the finalists. In the Women's Doubles Eleanor Anend teamed up with Ruth Nelson and won after quite a thrilling match over Mrs. Dave Showker and Mrs. Roland Bloomstand, 7-5, 6-4 was the final outcome.

The Girl's Singles and Doubles Finals had to be postponed, as most of the girls are away at summer camps.

There was a good turnout for the tournament—70 entries in all; and the committee expresses the hope that all newcomers will enter fall tournaments. A challenge board is being installed at the court. Come down and see your present ranking.

## Church Services

Sunday, August 6, 1944

**CATHOLIC SERVICE**  
Father W. J. Sweeney  
Grange Hall

Sat., 2 p.m. Children's Class.  
Sun., 7 and 11:30 Mass.

**UNITED PROTESTANT**  
Rev. Thomas Acheson  
Rev. Kenneth Bell  
Columbia High School

9:45 a.m. Sunday School  
11:00 a.m. Sunday Service  
6:30 p.m. Youth Fellowship Meeting.  
8:00 p.m. Church Service

**NATIONAL LUTHERAN SERVICE**  
J. Milton Grimsrud, Pastor  
Lewis Grade School

9:45 a.m. Sunday School  
11:00 a.m. Church Services

**EPISCOPAL CHURCH**  
Rev. Leo Dyson  
United Church Bldg.

8:00 p.m. Church Service, Monday

**LATTER DAY SAINTS**  
James Thompson, Pres.  
United Church (128-X)

9:30 a.m. Priesthood meeting  
10:30 a.m. Sunday School  
6:30 p.m. Sacramental meeting

**LUTHERAN (Missouri Synod)**  
Rev. M. C. Kauth  
Lewis Grade School (Room 116)  
9:30 a.m. Church Service.

## Phantom Horse Legend Revived Around Yakima

The legend of the phantom stallion was revived again around Yakima recently by Indian cowboys on the reservation in the vicinity of Mount Adams. The golden "king of the range" is reputed to have lead his band of mares in the hills for close to 15 years.

It is believed that the huge horse is the offspring of a wild mustang and a runaway thoroughbred mare. He is called "the phantom stallion" as a result of the amazing speed with which he can outdistance cowboys on the fastest cow ponies—and the canny elusiveness with which he side-steps the most carefully planned traps and snares.

### Captured Once

"The Phantom" was captured once by a lame Indian boy, who succeeded in a task which stumped more than 100 others. But the horse put up such a fight that the boy was unable to take his catch home for two days.

The Phantom was sold to a horseman who never succeeded in taming the stallion, and later he was bought by another rancher who made arrangements to turn him back on the range. Before the horse was released to resume his reign of the range, provision was made with the Yakima Indian agency that if any Indians should ever recapture the Phantom, they would not be allowed to sell it, and would be required to release him again.

## SAFETY PAYS

## Ration Calendar

### Processed Foods

Blue stamps A8 through Z8 and A5 through F5 in ration book No. 4 valid indefinitely. (10 points each).

### Meats and Fats

Red stamps A8 through Z8 in ration book No. 4 valid indefinitely. (10 points each).

### Sugar

Stamps Nos. 30, 31 and 32 in book No. 4 valid indefinitely for five pounds. Stamp No. 40 valid for five pounds home canning sugar to February 28, 1945.

OPA Notice: "It is now possible to obtain the full canning sugar issuance of 20 pounds per person." Apply to local boards on form R-323 for additional home canning sugar, affixing spare stamp No. 37 for each person (20 lbs. maximum a person).

### Shoes

Airplane stamps No. 1 and 2 in ration book No. 3 valid indefinitely (each good for one pair).

### Gasoline

Stamps No. 12A valid through September 21 (three gallons each). B3, C3, B4, C' and T stamps worth five gallons each; D, 1½ gallons; E 1 gallon. B or C coupons may be renewed within, but not before, 15 days prior to the earliest renewal date shown on the cover of the book.

### Fuel Oil

Period 4 and 5 coupons valid until September 30. New period 1 coupons may be used as soon as received.

## Offers Music Lessons

Mrs. Elaine Drake, 1412 Hunt Avenue, has started lessons in piano, accordion and organ for Richland Village residents. Her classes will be conducted in the Grange Hall in the morning only and will be for adults or children over eight years of age. Mrs. Drake has wide musical experience both in professional solo work and teaching in Salt Lake City. For further information and to arrange for lessons call her at Richland 821.

## Form Overseas Unit of 'Goldbrick Papas'

"Soldier—you too now can rear your children by V-mail," is the leadoff of a recent story telling of the formation among members of the Fifth Army Air Force in New Guinea of the "Society of Goldbrick Papas."

Members of the organization must be overseas and must never have seen their progeny. Meetings of the group are devoted to exchanging suggestions on child-rearing and admiring snapshots of baby in the bath.

### Short on Work

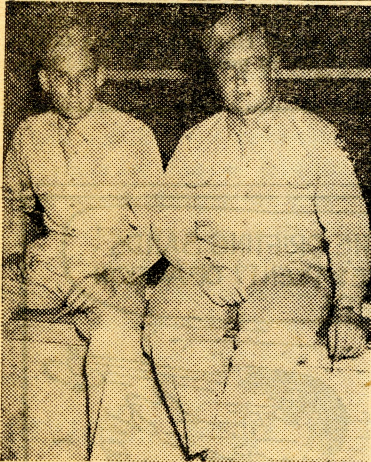
"Goldbrick" comes from the society's admission of being "long on advice and short on work."

Urge of the group is "Join now and help swell the growing roster of dads coolly contemplating the responsibilities of fatherhood from a safe distance."

## Richland Theatre

This week's schedule is not available.

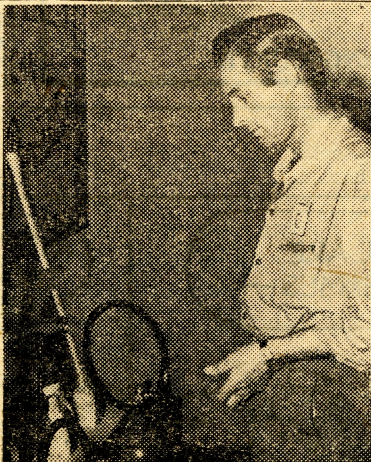
## QUESTION OF THE WEEK: Which Exhibit in the Safety Exposition Did You Think Was Most Outstanding—And Why?



**Pvt. Roger Cooper**  
... 2nd Provisional Military Police Co.

As is the custom of sojers off duty, Roger is the nonchalant gentleman from Virginia perched on the right, busy ogling.

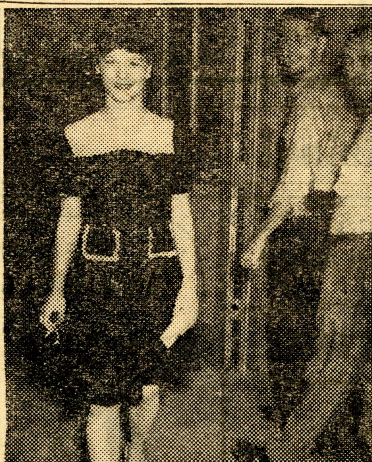
"Impressive exhibit? Nothing to it, my friendly, the ladies on yonder stage, and second best, State Patrol. Go over and study it and you'll better understand the work of the maligned MP. They've really got something and, so have we."



**Paul H. Rossman**  
... Sheet Metal Worker

Rossman is a loyal soul: "Sheet metal, naturally! I'm a sheet metal worker and I love my work. I stand and look at it. Go away and wander back again—I mean the exhibit, dope. Yep, sheet metal gets mine. I like the arrangement of display and appreciate the effort shown."

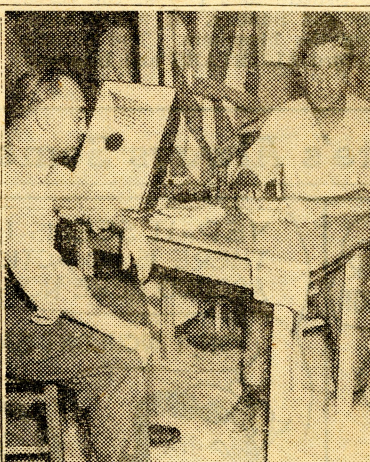
Paul came out, some months ago, from Minneapolis and sent his wife and boy to her folks at Sioux Falls, Minn., until his job is done at Hanford.



**Margaret Ruth Coughlin**  
... Welfare Plans Office

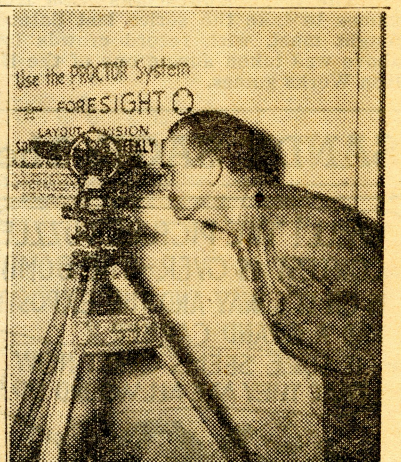
Margaret is one of these treats that makes an inquiring reporter's life bearable (see what I mean). And graciously says in reply: "Oh, none at all. I can't pick any. I have seen them all and can't make a selection. I love 'em all."

Her home is in Pittsburg, Illinois. A single miss of Welfare Plans living at Hanford she just "loves it." Good gal! We hope she's in Hanford a long, long time.



**Roy C. Tiesinger**  
... Carpenter

Two votes out of five is an awful good batting average. Carpenter Tiesinger, a veteran of the last war from Sydney, Mont., rang the bell again for State Patrol but split his vote in adding the Medical Department. "I admire the scientific approach and those people have it. There is a wealth of it on display there and courtesy too. I admire the first and appreciate the latter. Two is enough, but I would like to add a word for Olympic."



**L. D. Gitchell**  
... Electrician

An electrician from 100-D, Gitchell is lucky and lucid. He's lucky for his wife's along, a registered nurse employed at the hospital. And lucid for your reporter's question didn't stump him a second. "I like the Labor Exhibit. This show is a Safety Show and Labor has rung the bell. In their booth they have droves of accident prevention devices and instruction in their use." His home is in Ponca City, Okla.