

The SAGE Sentinel

VOL. 1, NO. 26

FRIDAY, JUNE 2, 1944

RICHLAND, WASH.

Be Sure To Keep Up-To-Date In Puzzle Contest!

Did you miss out on one or more of the picture puzzles?

If you did, that doesn't mean you've lost your chance to win—for the Safety Department has had reprints made of each picture since the beginning of the contest.

Ask your foreman for them! "Catch up" as soon as possible, then keep up-to-date—for this is a contest well worth winning.

It isn't work—it's fun. All you do is to outsmart the other fellows in finding the most safety hazards in the pictures printed on page 4 of The Sage Sentinel each week.

21-Jewel Bulova Watch

First prize is a fine 21-jewel Bulova watch—the kind you've always wanted to own. But that's not all—there are twenty other prizes in this contest, too:

Two 2nd prizes: Detrola Table-model radios.

Three 3rd prizes: \$25 War Bonds.

Five 4th prizes: Parker Pen and Pencil Sets.

Ten 5th prizes: Flashlights, Pipes, Belts, and Billfolds.

All field workmen below the rank of foremen (including sub-contractors) are eligible to enter. No women or office workers are permitted to submit entries—this contest is for "the field" only.

Remember—the prize-winners will be those finding the most safety hazards in the series of 10 pictures. Send your lists to the Central Safety Office in the Hanford Administration Building.

New Softball League Formed In Richland

The softball schedule for June 2 is:

Technical vs. Stores—Division 3 diamond.

Engineers vs. Layout—Dormitory K-8 diamond.

Cafeteria vs. Patrol—Dormitory K-8y diamond.

Area 145 vs. Coordinate Club—Cemetery diamond.

A new league for softball has just been formed. The teams and their managers are: Accounting, T. H. Charlton; Richland Wolves, F. J. Palumbo; 300 Area, Chester Smithson; Service, J. A. Ricker. The manager for the league is Philip H. Koen. More teams are wanted for

BOARD UP THE HOLES SO THEY CAN'T FLY OUT



Summer Forum Meeting Being Held Here Tonight

Plans for a fortnightly Summer Forum Series in Richland in cooperation with the Hanford series will be discussed at a committee meeting tonight in the home of Mrs. W. B. Durette.

Programs, for which there is no charge, will alternate weekly, with transportation provided for Richland residents attending hanford meetings. Members of the committee meeting with Mrs. Durette are Janet Davis, John P. Gorman, and Charles Barnes.

this league which started play on June 1. New teams will be accepted any time before the end of the first playing round, June 22. The games will be played every Thursday at 7:00 p.m. on Dormitory K-8 and K-8y diamonds.

At the half-way point of the first "Round Robin" set of games, the team's standings are:

	Won	Lost
Stores	4	0
Cafeteria	3	1
Engineers	3	1
Layout	3	1
Area 145	1	3
Coordinate Club	1	3
Technical	1	3
Patrol	0	4

Bricklayers Retain Lead, Piping Attendance Lags

Pipe Craft had a chance to overtake Bricklayers in the effort to hold down absenteeism last week, because Bricklayers dropped back. But Pipe Craft dropped back too, so Bricklayers remain in the lead with a percentage of 5.3. Pipe's close second was 5.4%. Electrical stepped up to third place with a standing of 6.2%.

Eight Crafts Improve

Eight crafts improved their standing. They were: Electrical, Paint, Labor, Rigger, Concrete, Earthworks, Reinforcing and Transportation.

The over-all plant standing took a turn for the better and now stands at 7.6. This in spite of the fact that six crafts slipped back: Bricklayers, Piping, Carpenter, Mechanical, Carpenter Labor and Concrete Labor.

Department Standings

The week's standings: First, Bricklayers; Second, Piping; Third, Electrical; Fourth, Paint; Fifth, Labor; Sixth, Rigger; Seventh, Concrete; Eighth, Carpenter; Ninth, Earthworks; Tenth, Mechanical; Eleventh, Reinforcing; Twelfth, Transportation; Thirteenth, Carpenter Labor; and Fourteenth, Concrete Labor.

Office To Help Figure New Tax Estimate Opens

Every married person who expects to make more than \$3,500 in 1944 and every single person who expects to make more than \$2,700 must file an estimated declaration of income and victory tax for 1944 by June 15, according to an announcement made by the income tax division of the Internal Revenue Service at Tacoma, Washington.

In order to help employees on the entire project to prepare and file these estimates properly, the Training and Relations Section will maintain offices in Hanford and Richland from 8 a.m. to 10 p.m. every week-day, including Saturdays, until June 15. A staff of trained workers will be available to help employees who wish to avail themselves of this free income tax service.

It will be necessary for employees to bring with them the total figure of their earnings for 1944 up to the last day of May, the total amount of tax which has been withheld by their employers during that period, and the amount of any refund that may have been due them from 1943 income tax returns. It is important that everyone who wishes to use this service have these correct totals added up before he comes to the offices in Hanford or Richland, so that the force can figure the estimated tax in the shortest possible time to tell whether the employee must make an additional tax payment by June 15.

There has been a great deal of misunderstanding about the new income tax bill which has just been passed by Congress in Washington, D.C. That bill refers only to taxes for the year 1945. It does not relieve anyone from filing quarterly estimates of taxes for the year 1944.

The income tax service will be handled in Hanford at the Information Service Office on "B" Street between Division and First Streets, directly across from the Time Office. In Richland the service will be provided in the Information Service Huttment on George Washington Way just north of the Red Cross Headquarters.

Scout Jamboree Crowded With Colorful Participants

Over 300 boys and girls of Richland, from nine years through high school age, attended the Scout Jamboree and Field Day at Richland Park last Monday.

Games, field events, a picnic supper and ceremonies conducted by Boy Scouts, Girl Scouts, and Camp Fire Girls were activities of the day-long program.

THE SAGE SENTINEL

OUR SLOGAN

"Let's ALL HEW to the Line!"

(Published Weekly by and for the Employees of the Hanford Engineer Works)

Editor Ruth S. Elliott
Management Consultant E. L. Pleninger
Photographer Robley Johnson
Sports Writer J. E. Carter
Staff Artists Anne Mason and Paul Berlin
Hanford Reporter Marguerite Cowger
Richland Reporter Rosemary Squire, Phone 34

Vol. 1, No. 26

Friday, June 2, 1944

Editorial suggestions and contributions should be sent to the Editor, Information Service Building, handed to your foreman, supervisor or placed in suggestion boxes. Deadline for all copy is one week previous to publication. Phone Extension 8661.

Copyright, 1944 by Hanford Engineer Works. The information contained in this publication shall not be communicated to the public or press. Requests for permission to reprint any or all of the contents must be made in writing to the Management, Hanford Engineer Works, P.O. Box 429, Pasco, Washington.

No advertising can be accepted

Rapid Readjustment

Almost two and a half years ago when the Japs bombed Pearl Harbor, U. S. was at peace with the world. Though many of our plants were producing certain types of machinery and equipment for various foreign nations at the time, all-out war with the combined Axis powers seemed only a remote possibility.

But as a result of this fateful attack things began to happen in America. Orders were issued. Contracts were placed. And in an amazingly short time war materials began to roll off our production lines at an encouraging rate.

As months passed American production mounted. And as industry went into its second year of World War II history, the war plants of this country had not only equalled but exceeded the combined production capacity of all nations.

Invasion Imminent

American industry has a right to be proud of this record. American will-power, labor and management—in a few short months had turned abruptly from peacetime production into the world's greatest armament plant.

This mammoth production system which has made possible the impending invasion of Europe—an event of such magnitude and power as to surpass anything of the kind man has ever witnessed. Even as you read this, the invasion may be underway. The whole world—in suspense—awaits the impact of this violent clash of arms.

Every American war worker will have a hand in this battle. The skill of every hand will be in it. The work that has been done has enabled us to defy a powerful, resourceful and alert enemy—but it will not win the war. It is not enough!

Replacements Needed

A constant flow of replacements must go to the boys who man our planes, our guns, our ships and our amphibious units. These boys must be fed. They must be cared for. They must be supplied with everything we can possibly give them. They must be backed to the limit!

Military authorities tell us that we have just begun to use the material we have produced in a big way—that we must keep on until the enemy is not only overwhelmed but pinned down hard and fast to his blood-soaked soil.

On the eve of the greatest battle of all history let us pledge to these boys who risk their lives for us that we will not let them down—that we will provide them with everything they need until victory is within their grasp.

Thumbnail Interviews

Interesting Facts About Sportsmen Who Have A Special Interest and Reputation In Some Field

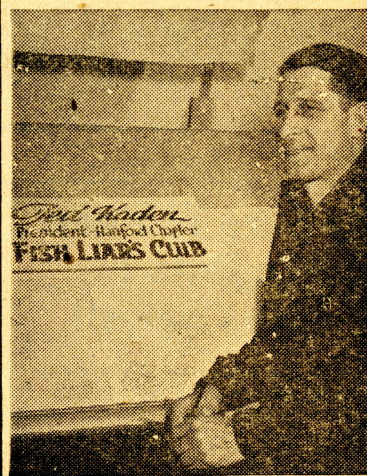


HE FOUGHT MAX BAER—

Howard Hicks of Central Shops was known as "The Rocky Mountain Kid." He was a pro boxer from 1929 to 1935, and fought Maxie in February, 1933, before the latter "won the belt" in August.

In 1930, Hicks won the Golden Gloves champ title. He also played 3 years of pro football with the Chicago Bears.

He's from Kansas City. He and Mrs. Hicks and their son live in the Trailer Village.



"FISH LIARS' PRESIDENT"

His fellow workers in the Sign Shop have unanimously elected Ted Kaden president of the Hanford chapter of the Fish Liars' Club.

They say he can tell the tallest ones they've ever heard. He's not from Texas, either; he's an Oklahoman. He spends his week-ends fishing, of course. Likes bass fishing especially, and hopes to catch some trout and steelhead.

He lives in Yakima, and commutes daily.



FORMER BOILERMAKER STAR A GOLF PRO—

Jim Zachary of the Hanford Housing department is an ardent football fan who used to be a player—and he follows the game (and all sports, for that matter) with great interest.

He played end for Purdue University Boilermakers in 1935, '36 and '37.

He and Mrs. Zachary live in Richland.



E. C. Whittaker spends his week-ends playing golf in Yakima. He's been a golf pro for many years now, and owns an 18-hole course in Topeka which is now closed for the duration of the war.

He's won the city championship in Topeka twice.

Mrs. Whittaker and their two sons, Bob, 15 years old and Bill, 14, live in Yakima.

Softball Season Is Delayed

Softball got off to a slow start due to sand storms and rain. However, with better weather it is expected to continue league play as scheduled.

Many of the players are to be commended for turning out in spite of bad playing conditions. At times the ball and third baseman were lost in the dust.

The Monday league games scheduled for May 22 were postponed and will be played at a later date. At this writing it is difficult to pick the better clubs, however, Mark Burlingame of the Mechanical Department will wager anything on his team. Mark has more players than any other team in the league and expects his team to be on top after the first round of play.

The Mechanical Department won from the Butchers 9 to 2 and the Stump Jumpers won from the Crane Department by a score of 16 to 12. The Olympic and Time Office workers won their games by forfeiture.

In the Tuesday league we expect a very close race between the Administration Riggers and the Hanford Fire Department. League games on May 23 were rained out, yet these two teams were on hand and won their games by forfeiture. These teams got together and in a practice game the "Fire Eaters" nosed out the Riggers one to nothing, when Tomazin poled a home run into right field. It developed into a pitcher's duel between Danny Welock of the Riggers and John Fatur of the Fire Department.

The game between the Dodgers and Layout will be played at a later date.

Games in the Thursday league have not been played due to failure of some teams to put in an appearance. No predictions now, but it looks like the Earth Worms will be the team to beat.

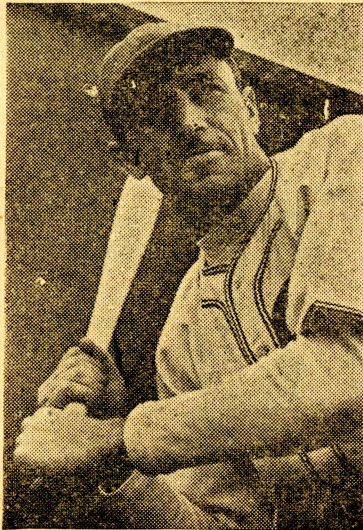
On Sunday, May 28, at 2:00 p.m. the Earth Worms will tangle with a team from the Pasco Naval Air Base. This game will be played in Hanford and for those who like their softball it should be interesting to watch.

Gasoline Ration-Sticker Check Due

A drive to check on the proper display on gasoline ration stickers which serve to identify the type of rations issued will be started soon.

Hanford SPORTS PARADE

Rigger Manager Is A "Long Hitter"



Danny Welock Has Never Hit Under .300 Any Year

If you have attended any of the Sunday baseball games you may have paid particular attention to that tall handsome guy who plays a lot of first base for the Crane and Rigger team—he is E. D. Danny Welock, team manager and player extraordinary.

Danny calls Milwaukee, home, and most of his experience in baseball has been gained in and around that famous "beer" city.

After spending several years in amateur leagues, Danny broke into organized ball with East Troy, Wisconsin in the Northern League—one of the mid-west's strongest semi-pro leagues.

In 1936 Danny went up to the Milwaukee Brewers of the American Association. He wasn't a regular but he did get into many games, principally as a "pinch-hitter." It was in this role in a game against Minneapolis that Danny received the greatest thrill of his life—hit a home run with two men on to win the game.

Known as a "long hitter" Danny has never hit under .300 in any one year, and in 1933 he hit a lusty .467, still high for amateur ball in Milwaukee.

Manager Welock has had a chance to observe all the teams in the Sunday league and he figures his Riggers will do all right for themselves. Thinks the competition will be very close and expects most opposition to come from Transportation and the Hanford Eagles.

Danny feels that the strength of his team will be in organization and balance, rather than individual stars. For the present, Danny's club will line up with Jack Seamas at shortstop. Danny says to watch this boy; he has real possibilities. Joe Thomas will hold down the hot corner and "Ripper" McGhee will round out the infield at second. In the outfield, Russel Cramer will be in left, Doug Mansfield in center-field and Sherman Everett in right field. Everett is considered a hard hitter—opposing pitcher take note. Bob Manley, their catcher, is another hitter who on occasion can

Triple Tussle Opens Craft Ball Season

The local baseball season officially got under way last Sunday as a huge crowd turned out to watch the six craft teams battle one another in the opening games of the Hanford Sunday Baseball League.

Transportation led off by soundly trouncing the Hanford Bluejays 10 to 0 in the 10 o'clock morning game. Transportation had too much pitching and hitting for the Labor boys and the game was never in doubt after the first inning when Transportation scored two runs.

In the first afternoon game, the Labor Department avenged their stunning morning defeat when the hard-hitting fancy-fielding Hanford Eagles handed the Carpenters a 12 to 1 pasting, and thus established themselves as the team "to beat".

In the night cap, Utilities pushed across four runs in the fourth inning to defeat Crane & Rigging 6 to 2. This game was probably the best played contest of the day.

Opening Ceremony

A short ceremony preceded the morning game in which Lt. Col. F. T. Matthias, Area Engineer; Mr. G. P. Church, Field Project Manager; Mr. R. E. Johnson, League President, and a color guard from the U. S. Naval Air Base at Pasco, participated.

Colonel Matthias pitched the first ball and Mr. Church caught—it was a perfect strike and the fans gave the gentlemen a big hand.

Schedule for Sunday, June 4:

Carpenter vs. Crane & Rigging, 10:00 A.M.

Utilities vs. Transportation, 1:30 P.M.

Hanford Eagles vs. Hanford Bluejays, 4:30 P.M.

All games on the practice field, Avenue "B" and 7th Street.

Richland Softball

	May 26		
Cafeteria	17	Layout	0
Stores	14	Area 145	8
Technical	1	Patrol	0
(forfeit)			
Coord'te Club 14		Engineers	12
(game called)			

hit the ball a mile. The Riggers are well off in the pitching department with three right handers; Johnny Rose, Ted Cornela and Harold Tucker—Tucker pitched for the Boston Red Sox in 1936-37.

Softball Standings

MONDAY LEAGUE	Won	Lost	Pct.
Mech. Department	1	0	.1000
Olympic	1	0	.1000
Time Office Workers	1	0	.1000
Stump Jumpers	1	0	.1000
Butchers	0	1	.0000
Fire Dept., White Bluffs	0	1	.0000
Hankee-James	0	1	.0000
Crane Department	0	1	.0000
TUESDAY LEAGUE			
Riggers, Administration	2	0	.1000
Fire Department, Hanford	2	0	.1000
Hanford Dodgers	1	0	.1000
Transportation	0	1	.0000
Layout	0	1	.0000
Riggers, Leazer Spur	0	1	.0000
THURSDAY LEAGUE			
Earth Worms	1	0	.1000
Sage Dodgers	1	0	.1000
Kettle Benders	0	1	.0000
Transportation	0	1	.0000
Riggers, 100-D	0	0	.0000
Riggers, 200-W	0	0	.0000

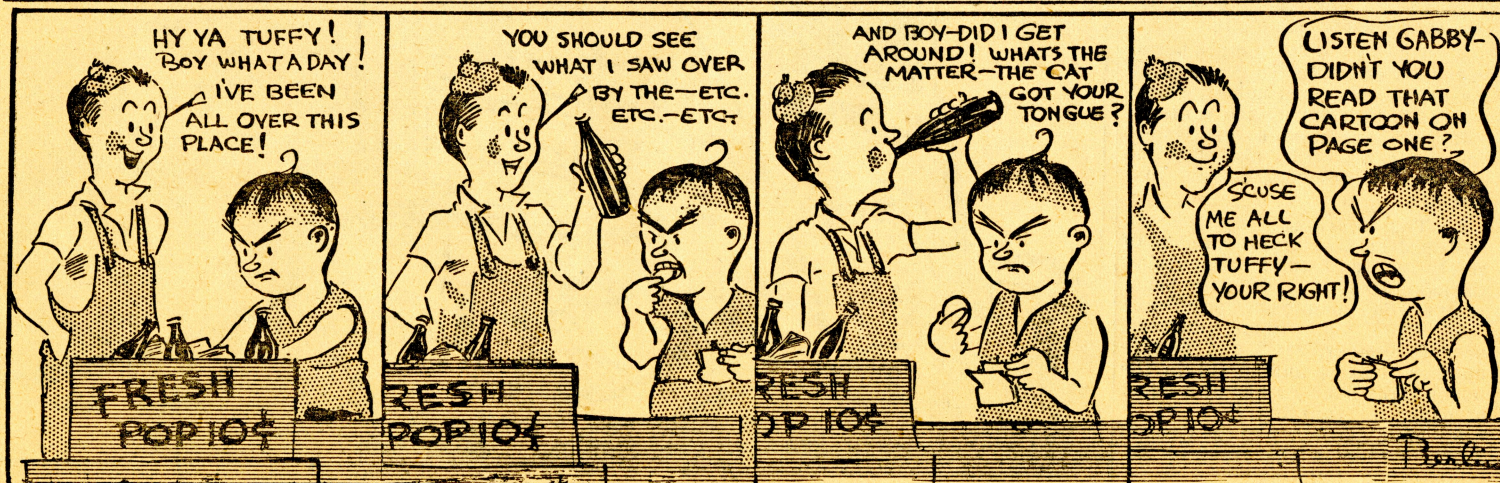
The A, B or C ration sticker must be displayed on the lefthand side of the rear window.

Holders of a B or C book as well as an A one should display only the former rather than both of them. Motorists are requested to check their ration stickers, and if they do not possess the right sticker to apply to the nearest ration office immediately.

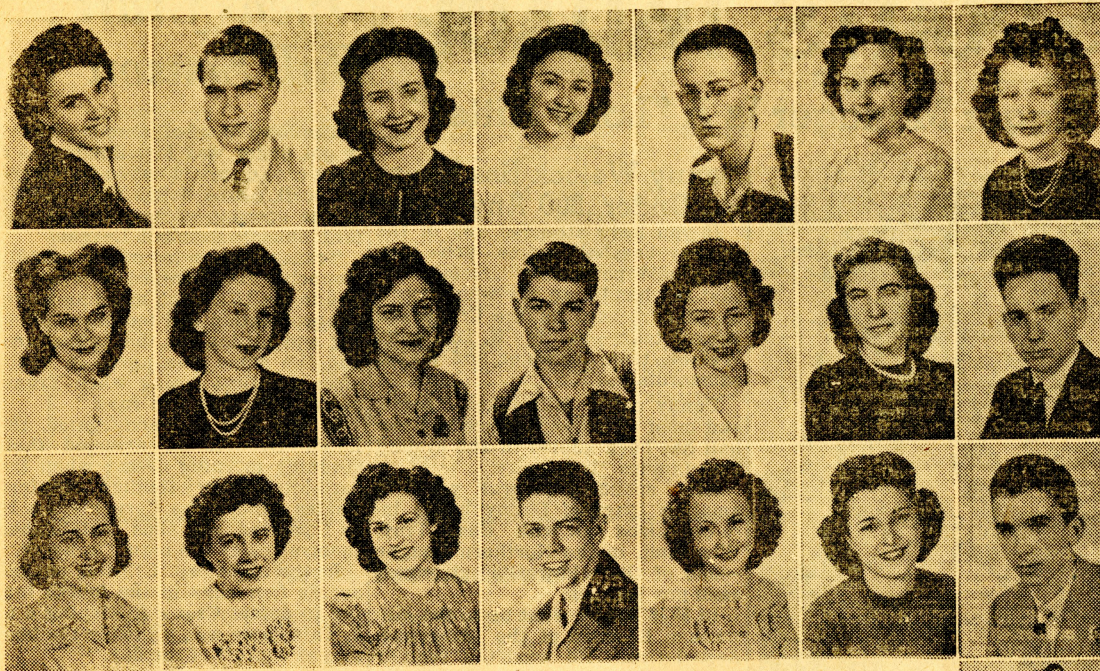
SANDY SAGE

"YOU TELL HIM, TUFFY"

BY PAUL BERLIN



Richland High School Graduating Class



Top row, left to right: Salvator Hunter, Merle La Grow, Dorothea Prindle, Maxine Holloway, Ned Larkin, Edith Schock, Muriel Beldin.

Second row, left to right: Jean Diamond, Beverly Brewer, Jo E. Dresser, Jack Williams, Mary Kennedy, Emza Galbraith, Clarence Stinson and (below) Ruby Lovette. Not in the picture: Joseph E. Ebbs, Terry McGovern and Tom Bateman.

Bottom row, left to right: Betty Bailey, Dorothy Henderson, Ina Deane Funk, President; Fred Rutt, vice-president; Reba Acorn, Treasurer; Dolores Myers, Secretary; Stuart Williamson.



Commencement exercises were held Wednesday, May 31st at the Richland High School, when twenty-five senior students were graduated.

Dr. C. O. Johnson, head of the social studies department of the State College of Washington at

Pullman, gave the Commencement address.

The class valedictorian is Edith Caroline Schock. Frances Holloway is Salutatorian.

The Baccalaureate exercises were held Sunday, May 28th, when Dr. R. O. Lamotte of Sunnyside was the speaker.

Improved Highway

Hanford and Richland motorists will soon enjoy smoother riding between Richland and Kennewick.

The State has let a contract for the improvement of primary state highway No. 3.

Richland Theater

Friday and Saturday, June 2 and 3—
WHERE ARE YOUR CHILDREN, with Jackie Cooper and Patricia Morrison.

Sunday and Monday, June 4 and 5—
LADY, LET'S DANCE, with Jimmy Ellison and Belita.

Tues., Wed., Thurs., June 6, 7, 8—
PIN-UP GIRL, with Betty Grable and Joe E. Brown.

Friday and Saturday, June 9 and 10—
WOMEN IN BONDAGE, with Gail Patrick and Nancy Kelly.

Church Services

Sunday, June 4, 1944

UNITED PROTESTANT

Rev. Kenneth Bell New High School
9:45 a.m. Sunday School
11:00 a.m. Sunday Service
8:00 p.m. Church Service

CATHOLIC SERVICE

Rev. Bernard Schiller Grange Hall
Saturday, May 27, 2:00 p.m., Children's Class.
Saturday, 3:00 and 9:00 p.m., Confessions
Sunday, May 14, 7:00 and 11:30, Mass.

LATTER DAY SAINTS

James Thompson, Pres. United Church
9:30 a.m. Priesthood meeting
10:30 a.m. Sunday School
6:30 p.m. Sacramental Meeting

NATIONAL LUTHERAN SERVICES

Rev. Frank Carlson Grade School
9:45 a.m. Sunday School
11:00 a.m. Church Service

LUTHERAN (Missouri Synod)

Rev. M. C. Kauth Grade School
9:30 a.m. Church Service

Mrs. Lindsey Is Richland Registrar

Mrs. Annette Lindsey, 1332 Marshall St., Richland, is the new registrar of voters for the residents of Richland and Richland Village. She will register voters at her home, located on the corner of Marshall and Symons streets.

Her hours are from 4:00 p.m. to 7:00 p.m. Monday, Tuesday, Wednesday and Thursday, and from 4:00 p.m. to 9:00 p.m. on Friday.

HOW MANY SAFETY HAZARDS CAN YOU FIND HERE?

Send List For Picture 6 To Central Safety Office

Are you good at spotting hazards? If you are, maybe you'll be a winner of one of the 21 valuable prizes in this 10-week picture-puzzle.

Read about it on page 1 of this issue of the paper . . . then study the rules below:

CONTEST RULES

1. All field workmen (including sub-contractors) below the rank of foreman are eligible to enter. Office workers are not eligible.

2. This is the 6th picture-puzzle in the series of ten. To compete for the prizes, you must submit an entry each week during the contest.

If you have missed any issues, you can catch up by obtaining the previous picture-puzzles from your foreman.

3. The awarding of prizes will be based on the largest number of safety hazards found in the puzzles. (Exaggerated hazards will count against you—make yours practical.)

4. Place your name, address, payroll number, craft and picture number (this is number 6) in the upper right hand corner of a sheet of paper for your entry.

5. Mail your entry to the Central Safety Office in the Hanford Administration Building.

6. Decision of the judges is final.

