

The Sage Sentinel

Published Weekly by H.E.W. Employees Association. Not To Be Mailed or Taken From the Area.

VOL. 1 NO. 52

FRIDAY, DECEMBER 1, 1944

RICHLAND, WASHINGTON

Red Cross to Provide Gifts

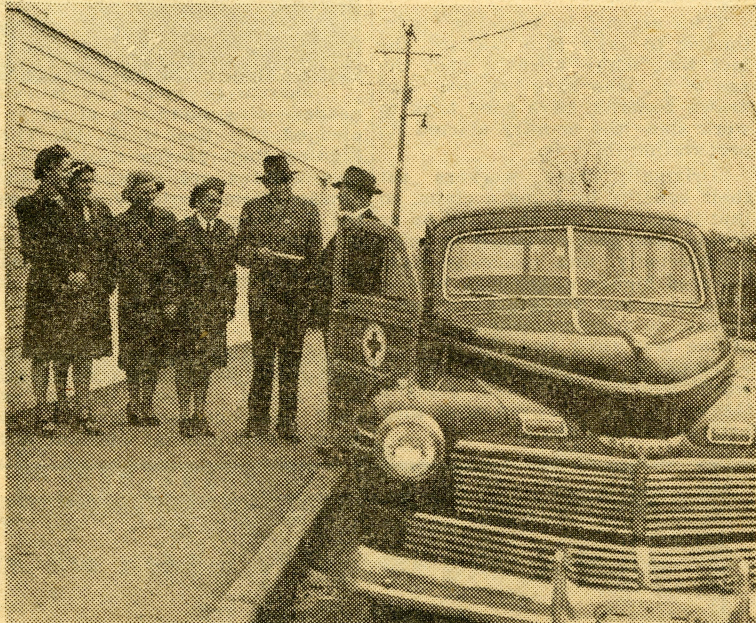
The Benton County Camp and Hospital Committee of the Red Cross has been commissioned to prepare 225 gifts for Service men and women in the Blue Mountain area. One hundred-and-fifty of the gifts are for bed patients at McCaw General Hospital, and the Richland Production Corps is handling the making of gaily colored Christmas bags for the gifts.

Furnishing gifts for these 150 bags is the responsibility of the community. Any individual or organization interested in helping with this project is asked to call Richland 51 or to phone Mrs. L. B. Harville at Richland 165. All gifts must be in by December 12.

The value of these gifts is to be not less than \$1.50, nor more than \$2.00, and the gifts must be selected from an approved list.

The remaining 75 gifts are to be individually wrapped. All 225 gifts go directly to the patients at McCaw Hospital and to the Service men and women in the other stations and camps, through the Benton County Camp and Hospital service of the American Red Cross.

New Red Cross Station Wagon



Filling a real need for the Benton County Red Cross is the newly-purchased station wagon here being turned over to W. C. Sommers (second from the left), chairman of the county chapter, by G. J. Wagner, employee of the U.S. Engineers, charged with making the purchase. Far left, while other members in the group (from left to right) are Mrs. Mrs. L. B. Harville, chairman of the Red Cross Motor Corps, is at the S. J. Bugbee, Mrs. Jean Ruffin and Mrs. W. M. Dallam.

Richland Jaycees Sponsor Bond Premiere Wednesday

Explain Xmas Tree Safety

The following suggestions for installing and caring for your Christmas tree have been compiled by the Safety and Fire Protection Division. Richland residents are urged to follow these recommendations—for a safe and merry Christmas.

1. Cut binder cord on tree two days before setting it, thereby allowing branches to spread to natural position.

2. Cut tree down to a height one foot less than distance from floor to ceiling.

3. To keep the tree green and fresh looking and to prevent it from drying out, set it in an earthen crock, wide-mouthed jar, or any small stewing pan—then fill the vessel with water, adding water as necessary each day. **THIS WILL HELP MAKE THE TREE LESS INFLAMMABLE.**

4. Be sure that tree is firmly supported so that it cannot tip.

5. Do not place burning candles on tree.

6. Keep inflammable liquids away from tree.

7. Make careful inspection of all electric wires used on tree. Do NOT use frayed or uninsulated electric wires.

8. After taking the tree down, place it on the lawn near the street. The rubbish collection crew will pick it up. Do NOT leave it near the house.

General: The decorations used for trimming the tree are often highly inflammable. Be careful with matches, cigarettes and open flame around the tree. Do NOT spoil your Christmas festivities with a fire.

Saturdays, with adult classes to be arranged during evening hours if there are sufficient registrations.

Premiere performances for this section of "When Irish Eyes Are Smiling"—admission to which will be purchase of a United States War Savings Bond—will be held at the Richland Theatre Wednesday night at the usual movie time.

Sponsored by the Junior Chamber of Commerce, the gala show is part of the Sixth War Loan Drive to purchase extra bonds during the month ending December 15. The musical extravaganza stars June Haver and Dick Haymes.

Booths will be set up in the theatre lobby where applications for bonds of any denomination may be made. A receipt for payment will be given, the theatre goer, and issuance of the government securities will be mailed later through the Hanford Bank.

Junior Chamber members backing the performance in cooperation with the theatre managers indicate that "added attractions" are also planned.

Richland Winner Over Kennewick, 46 to 6

An aggressive, hard-hitting Columbia High School team concluded its grid season on Thanksgiving Day with a resounding 46 to 6 victory over the Kennewick High School gridders at the Richland field. The Richland team, which has improved steadily during the season, kept things all their own way during the contest, holding the visitors scoreless during a first half in which Richland pushed across five touchdowns.

After taking the kickoff, the Columbia High team carried the ball down the field in 2 long marches, with Ludwig scoring on a line buck. Later in the first period an 80-yard drive culminated in a scoring thrust by halfback Kenny Grubb. In the second period, Conway scored the third Richland touchdown on a pass from Grubb; and shortly thereafter Ludwig scored again following Richland's recovery of a Kennewick fumble in the visitor's territory. The final score in the first half was a repeater by Grubb, who carried across on a wide end run.

Richland's sixth touchdown came in the third quarter when Franceschini, who also kicked four points after touchdown during the game, scored on a lateral pass play. Kennewick countered during this period, when fullback Leroy Decker crossed the Richland goal line. In the final quarter Ludwig scored his third touchdown of the day, to make the final count Richland 46, Kennewick 6.

Starting lineup for Richland included: Dam, right end; Ross, right tackle; Pyles, right guard; Slipard, center; Bloomer, left guard; Domrose, left tackle; Hobbes, left end; Sircoloumb, quarter; Whaley, right half; Grubb, left half; Ludwig, fullback. Kennewick's starting lineup included: Fortune, right end; Perkins, right tackle; Lashock, right guard; Giles, center; McCalmant, left guard; Thrasher, left tackle; Stifter, left end; Kauth, quarter; Adams, right half; Miller, left half; Decker, full.

The Richland victory gave Coach John Eubank's team a season's record of six victories, two losses, and one tie. The Columbia gridders' only setbacks came early in the season, when they dropped a close 7 to 6 decision to Sunnyside on September 29 and lost the following week to the highly-touted Pasco eleven by a 14 to 0 score. In a subsequent engagement with the Pasco team, an even battle on a muddy field ended in a scoreless tie.

During the season Richland defeated Prosser and Grandview and took two games from Dayton in addition to their two victories over Kennewick.

Bond Sales Are High as H.E.W. Crafts Race to Blast Tokio Sun

Camera Club Announces Illustrated Lecture Series

The Columbia Camera Club of Richland, which meets once each two weeks at the Sacajawea Grade School, announces the continuance of a series of illustrated lectures, prepared by the Eastman Kodak Company. These lectures present subjects of general interest to camera enthusiasts, illustrated by slides.

The schedule of future meetings, as announced by Ed Molloy, club president, is as follows: December 14—"Photographic Pictorialism"; December 28—"Paper Negative Process"; January 12, 1945—"Photography at Work"; January 26—"Some Picture Analysis"; February 9—"Principles of Development"; February 23—"Chats About Pictures."

Meetings of the club are held in Room 125 of the Sacajawea Grade School, starting at 7:30 p.m. All interested residents of Richland are invited to attend.

Bottle Shortage: Ask Return of All Containers

Beverage distributors in this territory have announced an extreme shortage of bottles, particularly in the small eleven ounce size. To alleviate the situation which may result if bottle returns are not materially increased within the near future, all persons having empty beverage bottles are being asked to return them promptly to the retail outlets from which they were secured.

W.S.C.S. Asks For Clean Used Clothing

The Women's Society of Christian Service of the United Protestant Church of Richland will hold a drive this week and continuing through December 8 for discarded clothes for war-torn areas. The clothes must be clean and should be taken to the Community Church at the corner of Gillespie Street and Goethals Drive. Further information may be had by calling Mrs. E. H. Trevenen, R-32.

Arrange Dancing Classes For Village Instruction

Arrangements have been made for dancing classes to be conducted at the Jefferson Grade School in Richland, conducted by the Hildenbrandt school of Dancing of Walla Walla, starting December 9.

Registration will be accepted on Saturday, December 2, between the hours of 10:00 a.m. and 2:00 p.m. at the Jefferson School, located on Van Giesen Street between Hunt Avenue and George Washington Way. Mrs. Ann Hildenbrandt, director of the dancing school, will be at the Jefferson School to accept registrations in Ballet, Tap, and Ballroom dancing classes.

It is stated that children's classes are to be held in the Jefferson auditorium during daytime hours on

"Male Animal" Rehearsal



The Richland Village Players go into a pre-rehearsal huddle, as director William P. Rankin, left, discusses some fine points of the lines in "The Male Animal," forthcoming Players production. Seated on floor (l. to r.): Tess Smeltzer, who plays the part of Myrtle Keller in the play; Ivan Durall, newspaper reporter; Diana Van Wyck, the feminine lead, "Ellen Turner". Second row: Lawrence Hanson—"Wally Myers" in the play; Charles Stuart, who plays the lead role of Professor Tommy Turner; Al Jarvis—"Ed Keller"; Audrey Doremus, who plays "Patricia Stanley"; Gordon Leader—"Dean Frederick Damon"; and Manfred Lindner—"Michael Barnes". Standing: William Rehberg—"Joe Ferguson" in the play; and Florence Pearce—"Cleota." Not included in the picture are Dorothy Hauff, who plays "Mrs. Blanche Damon," and Thearon Atkins—"Nutsy" Miller. The play will be given a week from tonight in Columbia High School auditorium.

BUY MORE BONDS
In Sixth War Loan Drive

The Sage Sentinel

Editor Helen D. Wiederrecht

Vol. I, No. 52

Friday, December 1, 1944

Editorial suggestions and contributions should be sent to the Editor, Training and Relations Building, handed to your foreman, supervisor or placed in suggestion boxes. Deadline for all copy is one week previous to publication. Phone Extension 8376.

Copyright 1944 by Hanford Engineer Works. The information contained in this publication shall not be communicated to the public or press. Requests for permission to reprint any or all of the contents must be made in writing to the Management, Hanford Engineer Works, P.O. Box 429, Pasco, Washington.

Is the War Over?

Every week The Sage Sentinel takes from the United Press wire a three-sentence summary of progress on the war in Europe. The communique reads like a sluggish thermometer. Monday's report: "The nearest distances to Berlin from advanced Allied lines today. Western Front—296 miles (from point southeast of Nijmegen. Unchanged); Eastern Front 315 miles (from Warsaw. Unchanged); Italy—532 miles (from point south of Ravenna. Gain of mile in week)."

These small factual releases bring home as effectively as any lengthy series of articles could the simple truth that the war is not over. As a barometer of V-E Day, they show the stronghold of Nazi-ism to be far from defeated.

The European invasion is more than five months old, and in September fallacious reasoning already was predicting a Victory-in-Europe Day. Now realistic strategists are inclined to push that victory back—and even harder is the realism that prompts many to put the question: "So what if Germany does fall? There's still the blasted Japs!"

It is the same type of reasoning that applies to H. E. W. It is no light promise that project men and women were making last week. "I'll see H.E.W. through to final victory—will you?" That sincere pledge means the fulfillment of an earnest purpose.

And paralleling that point is the fact that the European Theatre still commands the greatest supplies of men and materiel at the call of this country. Every effort is needed to put the finish to Berlin—and it's quite a few miles yet to the Nazi stronghold.

So it is with H.E.W. This project still commands high priority among the war jobs in the country. But also it needs an organized crew of men and women to stay-on-the-job 'til final victory. It is that philosophy, faith and determination that will see us through. And the third anniversary of Pearl Harbor—next Thursday—makes that pledge doubly serious.

Christmas Dividend

Hanford and Richland residents—many of us far from families and friends—know the disappointment of being passed up by the mailman or told "nothing today" at the post office general delivery windows. And on days when everything else is going well, the lack is not catastrophic. But on those days when things on the job aren't going as smoothly as they might, the wonderment over why-didn't-I-get-a-letter becomes mountainously unbearable.

Akin to us in that feeling are the men who fly our B-17 DAY'S PAY in its missions over Axis targets. As those men come back from their flights, it is very easy to imagine that they too are asking "any mail?" It would seem more than tragic if, for instance, Chuck Purcell, ball turret gunner, or Chet Piergies, tail gunner, both 22-year-olds, didn't get any mail after one of those grueling runs.

And as Christmas draws near, it seems a particularly warm-hearted occasion for writing to the Air Corps men of DAY'S PAY. They are proud to be flying the big bomber. "It's sure paying big dividends," Pilot Arlys Wineinger says of our—and their—strategic war weapon.

Army officials have assured H.E.W. employees that they'll make every effort to see that our letters get to the plane's crew members by Christmas if we get our greetings in by Monday.

To those uniformed young men—also away from home for Christmas and also eager for cheering mail—each of us can express a wish to them for A Merry Christmas and A Happy New Year. And we can also send them letters—the kind we would send to any friend in the service—now and any time until DAY'S PAY comes back from doing its part in Victory-in-Europe.

Letters may be sent in care of The Sage Sentinel for forwarding to the men who fly DAY'S PAY.

Men of the combat crew are: 1st Lt. Arlys Wineinger, 24, pilot, Tribune, Kan.; 1st Lt. Robert M. Neal, 25, co-pilot, Junction, Texas; 2nd Lt. Seymour Deutsch, 23, navigator, Brooklyn, N. Y.; 2nd Lt. Frank E. McCann, 22, bombardier, Newark, N. J.; T-Sgt. Rudolph E. Krack, 22, engineer and gunner, Garfield, N. J.; T-Sgt. Allen N. Cohen, 23, radio operator and gunner, Philadelphia, Pa.; S-Sgt. Charles A. Purcell, 22, ball turret gunner, Laurinsburg, N. Car.; S-Sgt. Edwin A. Stewart, 22, waist gunner, Pensacola, Fla.; S-Sgt. Chester W. Piergies, 22, tail gunner, Lorain, Ohio.

The ground crew men are: S-Sgt. Salvatore Leto, 22, crew chief, New York, N. Y.; Sgt. Lawrence Eighner, 23, assistant crew chief, Watseka, Ill.; Cpl. Michael Spear, 32, aviation mechanic, Bronx, N. Y.

BUY EXTRA WAR BONDS
IN THE SIXTH WAR LOAN DRIVE

Social Security Info Tuesday

Questions about Social Security regulations which have been puzzling Project folk will be answered by Anton R. Boettcher, manager of the Yakima office of the Social Security Board, when he comes to Hanford on Tuesday afternoon of next week. It was announced that he may be contacted at the Information Desk in the Training and Relations Building.

As manager of the Yakima office, Mr. Boettcher has called attention to a recent announcement by the Board to the effect that, upon request, it will recalculate the amount of old-age and survivors insurance benefits available to once-retired workers to include credit for wages received since the benefits were first claimed.

"This action," he explains, "is intended to take into account the fact that many workers past the age of 65, who have retired and drawn benefits, have gone back to work since the country started its preparation for war.

"Originally these workers set their benefits by filing a claim, so that they could not be moved up or down. But they returned to work unexpectedly, and generally have received higher wages than before. The Board has, therefore, announced that, in order to meet the intent of the law, their benefits may be recomputed in order to credit towards monthly retirement benefits the wages they received after they had once filed a claim."

They're With H. E. W.



There'll be these two fellows on the job for as long as they're needed—plus hundreds of other patriotic workmen who this week pledged "I'll See H. E. W. Through to Final Victory—Will You?" Signing their pledge cards and already sporting their red-white-and-blue buttons are George R. Mills, Springfield, Mass., and John W. Sowder, from Kentucky. They are the affectionately-known janitors of the Training and Relations and Employment Buildings.

Red Cross Nursery Needs Toy Supply

For the Richland Red Cross Nursery, a call for unwanted toys has been issued. Anyone having "extras" may contact Mrs. L. G. Ahrens, chairman, at Richland 369.

Lutheran Guild Sponsors Food and Handwork Sale

Members of the Richland Lutheran Guild are sponsoring a food and handwork sale tomorrow on Anderson's mezzanine, starting at 1:00 p.m.



This is probably the first time you've ever seen War Bonds fishing

That man in the boat up there is Bill Brown. In about five minutes he's going to land the biggest bass in the world—well, almost the biggest.

The time is 1954. And even Mr. Brown doesn't know yet about the big one he's going to land. But Bill is working hard today—in 1944—saving money—and buying War Bonds and still more War Bonds. After all, the Browns have two boys in the Navy and as he says, "It's little enough that we do, but it's the best we know how."

The happy side of Mr. Brown's saving is that he's laying the ground work for a secure old age for his wife and himself. And according to Mr. Brown, "that means fishing."

1944 is a good year for saving money. Be-

cause of the war there is a shortage of purchasable material. Because of this shortage prices are higher and dollars can't buy as much as they probably will 10 years from now, say. If you will plan your saving now—work it out with pencil and paper—your spending later will be more profitable to you and your family. And the best way to save now is to buy War Bonds. Another good way is to add regularly to your bank account so that you will have ready cash for emergencies. Your bank account may help you to hold your War Bonds straight through to profitable maturity.

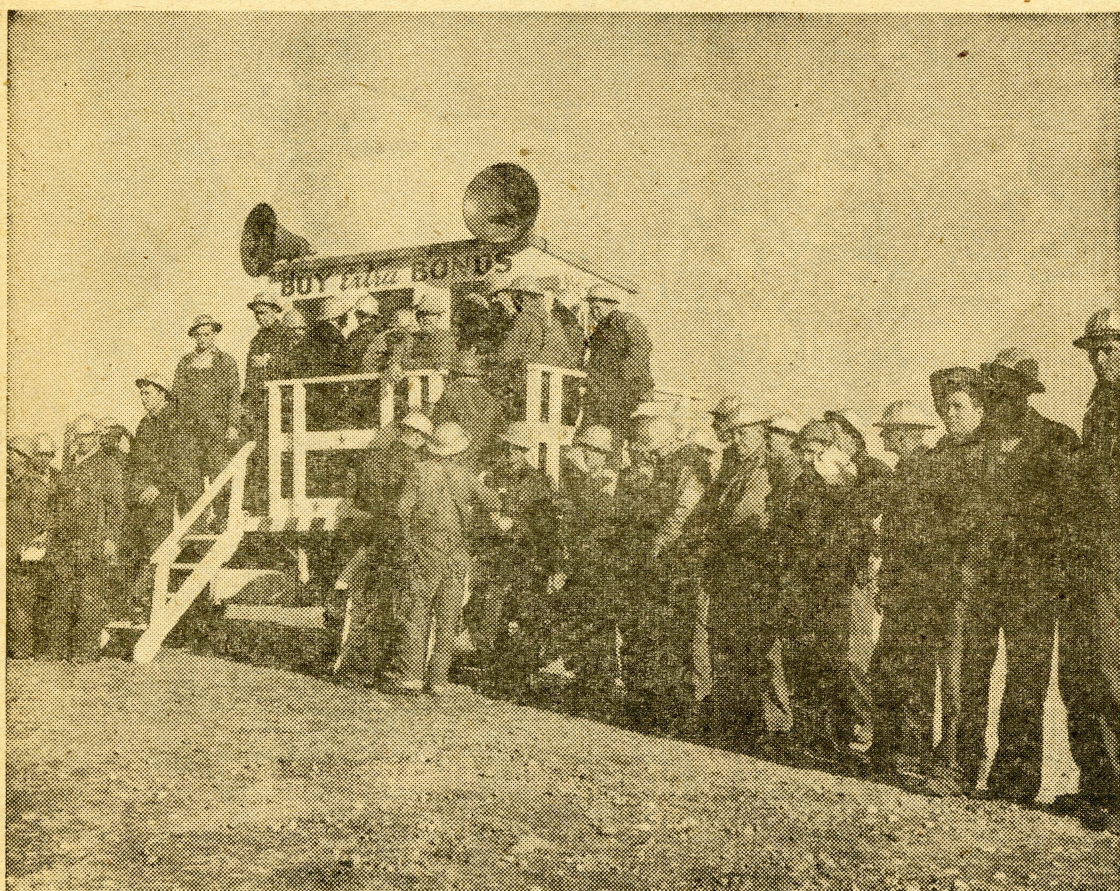
PLAN YOUR SPENDING
FOR YOUR FAMILY
YOUR COUNTRY
-YOURSELF
PLAN YOUR SAVING

Help the nation's efforts to keep your living costs DOWN, the buying power of your dollar UP.

This advertisement is approved by the Office of Economic Stabilization

Serving at H. E. W.
Seattle First National Bank

On to Bond Quota



Martial music booms through the loudspeakers as the red-white-and-blue bond trucks roll the Sixth War Loan Drive on to its \$600,000 quota. Here at Leazer Spur the truck and its selling crew pause, while Riggers, under the supervision of Area Superintendent H. L. Eskew, put their earnings into War Bonds. This is one of the two trucks which will call regularly at each area until the drive ends, December 15.

Richland Basketball



The Thrifty Drug cagers push through a score in the second quarter of a fast game with the Patrol team at the Columbia High School gymnasium. The Drug team won, 32 to 18, for their third victory of the season in the Richland Basketball League.

Presentees
In Comeback

Coming up slowly were the presentee standings for last week, when the over-all plant average stood at 6.5 per cent absentees.

First among the crafts for the period were Bricklayers, whose average was 3.7 per cent. Close second and third places went to Reinforcing Steel and Labor with 4.7 per cent and 4.8 per cent respectively.

To help in bettering their week's average, six crafts improved their standings from the week before. They included: Bricklayers, Piping, Electrical, Riggers, Earthworks and Paint. Two—Reinforcing Steel and Transportation—had "static" averages, while the remaining six crafts slipped from the week previous.

The complete standings behind the three leaders were: Riggers, 5.1 per cent; Transportation, 5.2 per cent; Earthworks, 5.4 per cent; Paint, 6.2 per cent; Carpenters, 6.6 per cent; Mechanical and Electrical, 8.0 per cent; Piping, 9.1 per cent; Concrete, 9.5 per cent; Carpenter Labor, 12.5 per cent, and Concrete Labor, 20.0 per cent.

Three Rec Huts
On Second St.

Three new Recreation Centers for all employees have recently been opened. At Second Street and B Avenue, directly across the street from Recreation Hall No. 1, these Centers are housed in three eight-foot hutments.

In Hutment "G", commonly called the Reading Room, one may find almost any magazine of his choosing. In this room, rest in comfort on any of the ten lounges may be enjoyed—with all the quietness desired. Added to the fine collection of magazines and books are 125 Pocket Readers on most any subject readable.

The H.E.W. Employees Association has orders in for newspapers from states all over the union. Chances are, the Rec Department says, you will find a paper from your home state, whichever it may be—even if it is Arkansas or Oklahoma. The supervisor, Richard Smith, will gladly upon request furnish paper, pen and ink for any writing one cares to do. Fifteen writing tables are there for this purpose.

Next door to "G" is a hutment with twenty-four card tables. Favorite card games, whether it be pinochle or rummy, can be enjoyed here. The cards or any popular game may be checked out from the supervisor in Hutment "G".

HOME SAFETY HINTS

From the
National Safety Council

Snow and Ice

Snow or ice on the walk or steps may cause a serious accident. Take short steps—don't stride.

Remove snow promptly before it packs. Never let slush freeze and form ice. Keep outdoor steps and walks clean.

When ice forms, sprinkle sand, gravel, fine cinders or salt, or a combination of salt with one of the others, to insure good traction and a safe footing.

Remove icicles from eaves, cornices, etc. by means of a long pole.

Table tennis artists are taken care of in grand style too. Two modern regulation tables are in Hutment "C", giving plenty of room for play. There may be tournaments scheduled, if enough interest is shown. Also in Hutment "C" are two rooms done in blue. These are to be the Radio Rooms. Efforts are being made to install the radio as soon as it is available.

During the week the hutments are open from 2:00 p.m. until 11:00 p.m., and on Sundays from 8:30 a.m. to 11:00 p.m.

These recreation hutments are for the enjoyment of all. If the Arkie isn't holding his newspaper upside down, he may even be reading it. Who knows!"



Koret Handbags

We feature the famous KORET line of handbags which are noted for quality . . . Also other handbags in leather, suede, fabric and Cordé at popular prices.

DAVID BENIOFF fur neck pieces are an excellent gift . . . We have Martin, Minks and Kolin-skys to select from.

Costume jewelry is an ever popular gift . . . Our jewelry bar has a wonderful selection of beads, earrings, and pins.

Beautiful items such as quilted satin robes and bed jackets can be obtained in our Lingerie Department.

The Style Center

Richland, Washington

"The latest styles at thrifty prices"

BACK THE 6TH WAR LOAN DRIVE

NOW OPEN
NEW GIFT SHOP

Pinup Girls
Plaques
\$2.49

Triple
Mirrors
\$2.25

Dresser
Sets
\$7.95 up

Hollywood
Dolls
\$2.50

3 Piece
Perfume Sets
\$3.49

Identification
Bracelets
\$7.95 up

New
Costume Jewelry
\$1.00 and up

Mizpah
Diamond
Ring
\$49.50
Plus Tax

WATCH REPAIRING — ENGRAVING

Weisfield and Goldberg
JEWELERS

THE WORLD AT WAR

The Western Front

The Battle of Germany continued with unabated fury. The plains in front of Cologne was the scene of some of the bitterest fighting warfare has even seen. The Nazis threw in fresh troops and a large part of their armored strength in the form of the new Tiger Royal tanks. They fought with the frenzy of desperation. They slowed us down, but could not stop the First and Ninth American Armies. Yard by yard our boys moved forward, paying a heavy price for the gains, but taking everything the enemy could throw at them and still advancing—five hundred yards here, half a mile there, two miles at another point. It is tough, tough going.

Farther south, General Patton's Third Army made more headway against less opposition. For the first time in 1500 years the fortress city of Metz was taken by storm, together with the German commander, Major General Dunckern. But pistol-paskin' Patton did not linger to enjoy the victory. The Third kept right on pushing westward, headed for German Saarbrücken and the famous Saar Valley. By the first of this week they were within heavy gun range of the city.

The vital Saar is in a much more precarious position than the equally important Ruhr valley to the north. Last week the French First broke through the Belfort Gap, rushed along the Swiss border and cut north down the Rhine to Strasbourg. At the same time the American Seventh broke through other gaps and pushed the Germans into

the trap created by the French. At last reports the two armies of the Sixth Group were herding the Nazis down the Rhine into the maw of Patton's men at the gates to the Saar.

It looks as though Eisenhower's strategy is beginning to take hold fast. The Germans would prefer to retire to the east bank of the Rhine and hold the strong defensive positions there. But to do so would mean the loss of the Ruhr and the Saar, which are absolutely vital to their war production. So they are forced to defend territory which it suits our commanders to attack in great strength. If we soften up the enemy here it may make the crossing of the Rhine much easier later in the winter. The Western Front is the number I battle ground of a World at war.

The Eastern Front

The jaws of the Red Bear are closing in relentlessly on doomed Budapest. Last week two important cities to the northeast of the Hungarian capital were taken by the Russians, Hatvan and Miskolc, and the town which we know by its famous wine, Tokay. More progress, though less mileage was made by the Red Army along the Danube south of the capital, while to the north in Slovakia our Allies cleaned up some fifty towns and villages as they pushed closer to Vienna from the northeast, just as their left wing is doing from the southeast. In the lower Balkans, Albania and Yugo-Slavia, the British and partisans are busy cleaning out nest after nest of enemy stragglers.

SAAR BASIN: Area of Industrial Might



The Saar Basin, whose industrial might is graphically portrayed on the above map, is in the direct path of Yanks advancing into Germany. Important source of Nazi war production, the Saar's capital is Saarbrücken, a modern industrial city comprised of huge steel plants and smelters. Inset map shows location of Saar Basin.

Firestone TOY HEADQUARTERS

COME IN... SEE OUR COMPLETE SELECTIONS!

14 Inches of Sweetness!

CHUBBY DOLL
\$5.98

All dressed up in a pretty dotted dress with a great big bonnet to match. Composition.

Seventy-Five Assorted!

Bag of Blocks
69c

Various sizes and shapes, plain and brightly colored! For hours and hours of fun!

"SHOO FLY"

5.45

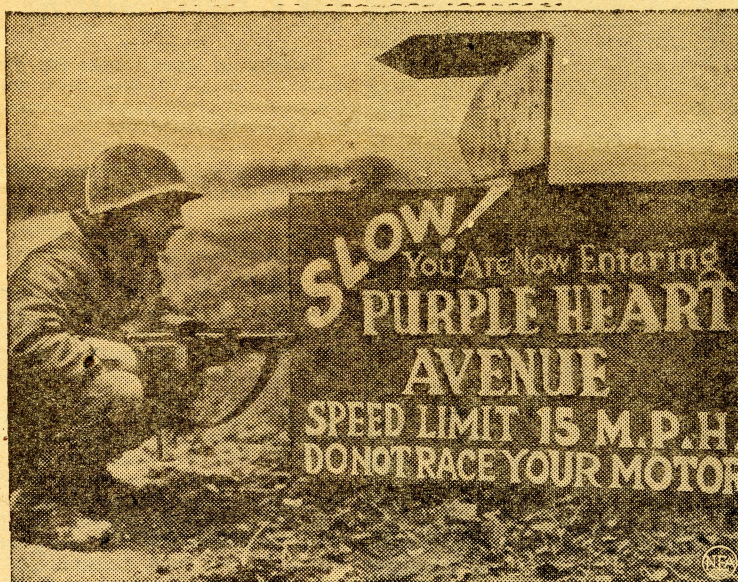
A wonderful gift for a little child. It's a "Shoo Fly" with a galloping horse design. Strongly made.

Come In
SEE OUR COMPLETE SELECTION
Also Men's and Women's Christmas Gifts

LOCATED
In the Shopping Center
HANFORD

Operated by
Contractors Sales & Service

Phone 8526



(Signal Corps photo from NEA)

This grim roadside sign outside Metz, France, reminds squatting Pvt. W. Chickery of Bethlehem, Pa., a member of an Infantry unit, that he had best tread with care lest he be a target of the Nazis—and hence a candidate for the Purple Heart medal.



**Eura's
Beauty
Salon**

**COLD WAVE
OUR SPECIALTY**

HAIR STYLING

HAIR CUTTING

BONNE BELL COSMETICS
FREE FACIALS BY SKIN SPECIALISTS

Come in, or Call 8271 for Appointments

The Burma-Chinese Front

The news from Burma continues to be good—the Chinese are fighting in Bhamo, a principal Jap stronghold in northern Burma, and an important stepping stone to the recapture of the Burma Road. As usual, the going is not good in China. The Japs are steadily strengthening their all-land route from south to north and are now driving west to threaten the Burma Road from that direction.

**Buy More
War Bonds**

B-29 Boss



Maj.-Gen. Curtis E. LeMay of Lakewood, O., commands B-29 Superfortresses which lashed out at Singapore naval installations and Sumatra oil refineries in longest-range daylight air raid of the war.

**William Wilson
Optometrist Optician**

**MOVED TO
SUNNYSIDE**

Across from Postoffice

EVENING APPOINTMENTS
Phone Sunnyside 2761
Write Box 698

Nazis Show the Way



Nazi soldiers who evacuated German town did Yanks an unintentional favor by leaving behind this excellent map, which shows in detail the area where stubborn fighting rages.

New Navy Ace



Comdr. David McCampbell, above, shot down nine Jap fighter planes in 95 minutes of combat during the Battle of the Philippines. The feat brings his score to 30, topping all other Navy flyers and tying him for second place with land based flyers in the Pacific.

The Pacific Front

Torrential tropical rains and the resultant mud have all but stopped our pincers from closing on the remaining Japs on the west coast of Leyte. We took the town of Limon at the north end of the line after a bitter fight, and are slowly closing in on the last strong point, Ormoc. The enemy is still desperately trying to reinforce the remnants of their garrison, and are just as steadily losing boats and troops, some 17,000 of the latter last week never even got to Leyte. Toward the end of the week our fliers got tired of waiting for the Japs to get over toward Leyte. They went over to Cebu and bombed and strafed their boats and barges full of troops before they even got well under way.

Those quiet little hell-cats, the submarines of the U. S. Navy, announced their biggest bag to date—27 Jap ships will carry no more freight.

**BUY EXTRA
WAR BONDS**

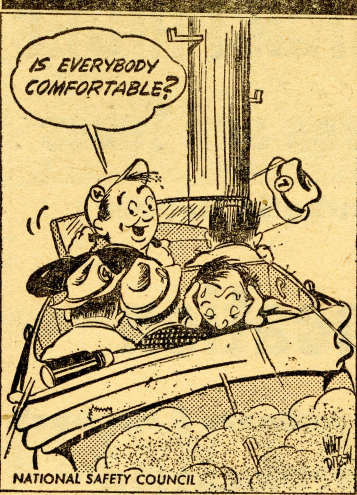
J. L. MAST
Special Agent
for
NEW YORK LIFE
TELEPHONE PASCO 15
BOX 47
or
1516 SOUTH FOURTH
PASCO

The Strategic Air War

Two new and unpleasant surprises were sprung on the enemy by our air forces last week. In the Pacific Tokio was bombed for the first time by land-based planes. They were B-29s, of course, and we calmly made no bones about stating that they came from the Marianas, and what are you going to do about it? A special wrinkle we doped out to annoy the Nips was bombing Japanese island forts enroute to Tokio and back. Just to make sure that Hirohito-the-stooge understands that it was not a solitary raid, but the first of a steadily increasing round of bombings, we returned via B-29 three days later to give Tokio a better idea of what we mean by "Remember Pearl Harbor."

Over on the other side of the

ACCIDENTS HELP THE AXIS



world the flying boys pulled a really fast one on the Nazis. We sent out five hundred fighters, ostensibly to protect a formation of bombers. The Heinies sent up some strong fighter squadrons to the defense, only to find that they were mixed up in a royal dog fight over Germany, with nothing less than a tough gang of American Thunderbolts. Score—America 102—Germany 13. That's about eight to one.

The bombing in Europe was concentrated, (and we mean CONCENTRATED) on oil refineries and synthetic oil plants in Germany last week. Our air command evidently intends to cut the enemy oil supply down to a trickle. That's one way to end the war quickly.

On Second Thought

by
Gordon Sutherland

Friday, November 24th, 1944, has a permanent red circle around it on my calendar. On that day H.E.W. construction workers broke all records for War Bond purchases on this Project—and as far as I know, any other construction project. The boys and girls at Hanford bought \$134,300 worth of Sixth War Loan Saving Bonds from the Hanford bank and the travelling bond wagons. I don't know how much was bought from the Richland bank that day, but the line was so long that both the manager and assistant

manager had to open up bond windows. There are a good many construction workers in Richland, so I think it's safe to figure that Construction alone bought close to \$150,000 last Friday—and if that isn't doing things the Hanford way, I'd like to see something better.

Of course I tried to grab the credit, claiming that the idea I put out in last week's column about sending a Christmas telegram to the crew of DAY'S PAY inspired the guys and gals to really go to town in a big way. I might have got away with it if some hardboiled egg hadn't pointed out that the buying started first thing in the morning and kept up until the bank closed at 9 p.m., while The Sage Sentinel didn't get to most people until late afternoon or evening. Oh well, they didn't shoot me for tryin'.

Actually, no sooner had big Bob Bromley and Johnny Cotter got their Bond Wagon crews out into the areas that morning than the boys started buying. Not just the little twenty-fives and fifties, but a lot of big stuff—hundreds, five-hundreds and thousands. Those are the big babies that really count for old Uncle Sam. The boys had Johnny and Bob and those swell girls that work with them just about hanging on the ropes trying to make change and typ up bonds fast enough to keep the lines moving. But they weren't beefing about that—you can't make them sore crowding up to buy bonds.

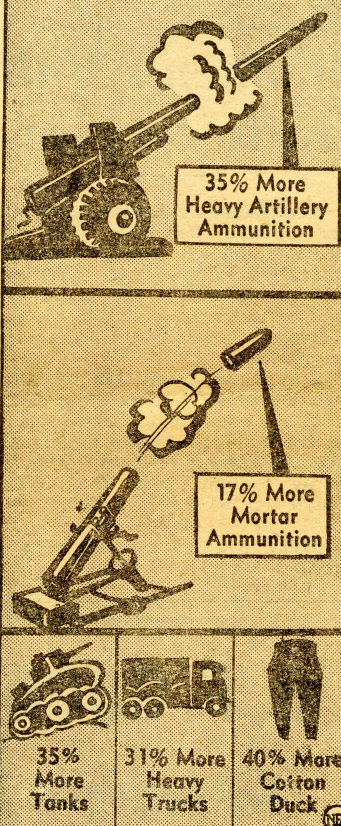
At one o'clock, when Lucille Chaney and Doc Batchelder opened up their bond windows at the bank, there was a line already waiting for them. That's not exactly right, for Doc had some other work that had to be done that afternoon, so he had a substitute at his window until

6 p.m. Maybe that's why Lucille beat him out for top honors in bond sales for the day. Anyhow, noon at those two windows, or the other two that Bob and Johnny opened up after they came in with the Bond Wagons, got a minutes breathing spell until the bank closed at nine.

And don't any of you hard rockers get the idea that selling war bonds isn't work! First place, you can't do it sitting in a swivel chair—you have to stand on your feet all the time. Then you have to be darned careful that every bond is typed up exactly right according to the specifications the Treasury Department puts out. Then you have to figure odd amounts in making change from thousands of pay checks, and those checks are never in even round figures. And all you have to do is to make one mistake and you're right behind that old black eight ball.

As it was they didn't get through balancing the bond sales against the cash and checks taken in until midnight. There weren't any errors that amounted to anything or someone would have been there a lot later than that. Everyone was dog tired—just about out on their feet—but there wasn't a single gripe or beef in the whole outfit. Everyone was as happy as though they had just had a swell present—happy because Hanford was going after the Sixth War Loan in typical Hanford style, big and fast. I'm not worrying a bit about that Christmas telegram to the boys on DAY'S PAY, but Colonel Matthias better start figuring out just how he's going to word it, for I'll bet a week's pay that H.E.W. is going to hang up a record on the Sixth War Loan that will make those boys of ours as proud of us as we are of them.

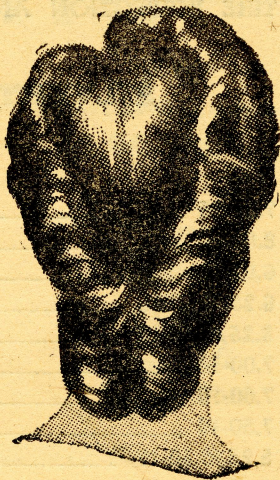
OUR ARMY IN EUROPE NEEDS



Pass the ammunition and more of it, is the cry from the Western Front, according to Undersecretary of War Robert P. Patterson, indicating that production must be boosted on the home front. Chart above shows items which must be produced in greater numbers, with heavy artillery and mortar shells leading the ammunition groups. Troops are reported firing 35 days planned supply in 10 days—and there are no reserves in this country.

For Your Most Soigne Costume

You'll want a regal new hairdo for that elegant new holiday dress and we're just the ones who can give it to you. We've expert operators who know just the style to suit your personality. Stop in today for an appointment.



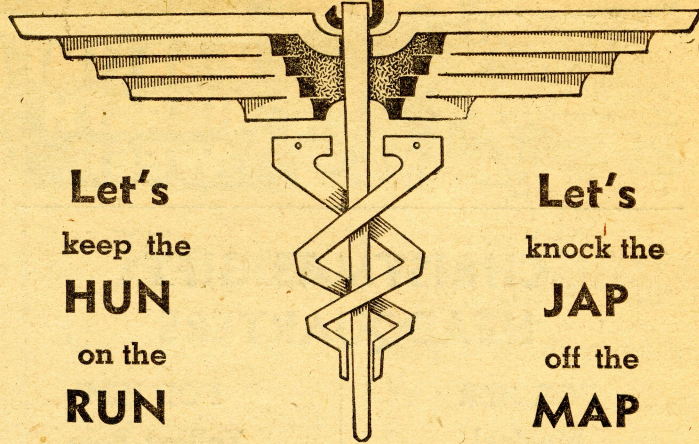
Our Specialty
**HELEN CURTIS MACHINE AND MACHINELESS
AND COLD WAVE**

Hanford Beauty Shop

CASTLEBERRYS Super-Cut-Rate-Drug

708 Symons Street Richland, Wash.

the drug center



With the **BEST BUYS** in the World

**\$25.00
WAR BOND
\$18.75**

**\$50.00
WAR BOND
\$37.50**

**BACK THE 6TH WAR LOAN
\$100**

**WAR BOND
\$75.00**

**\$500.
WAR BOND
\$375.00**

**\$1000.
WAR BOND
\$750.00**

BUY EXTRA BONDS!

NOTE: Buy Your Bonds from The Seattle First National Bank, or watch for the Bond Wagon

QUESTION OF THE WEEK: Why Do You Think It Is Important To Stay-on-the-Job and See H.E.W. Through?



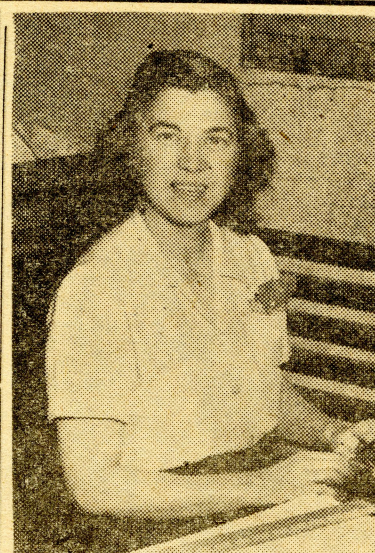
Stanley Florcek
Tire Inspector
Although this Central Shops worker doesn't claim any particular personal motive for sticking to his work, he's very definite in his conclusions. "Why should anyone stay on a war job? We've got work to finish. Just plain patriotism makes us want to stick—and buy bonds while we're doing it."
A native of Chicago, Florcek admits to being a single man, "even if I have been here almost a year."



Rose Foster
Olympic Commissary
"Have I got a reason to see this job through? I should think so! I've got two brothers and a husband in the service. As long as they are in it, I want to be, too," Rose says emphatically. "The extreme importance of this job makes it the spot for me."
Rose handles trays in the Women's Refreshment with a bright grin for every customer. She calls Denver, Colorado, her home town.



J. W. Patterson
Sign Painter Foreman
Around the shop, this genial foreman is known as "Pat," and—yes, you guessed it—he's Irish, by way of Tulsa, Oklahoma.
"No personal reason for sticking to the job," Pat admits. "But as good Americans, I think staying as long as we're needed is no more than we ought to do for the boys in the trenches."
Pat lives over in neighboring Yakima with his wife.



Dollie-Glee Mow
Stenographer
This Transportation employee is certainly qualified to boost the Stay-on-the-Job campaign, since she has been on the Project for nearly a year without missing a single day's work.
"We're in the fight as same as the soldiers," is Dollie's belief. "A fight for Americans isn't over until we win."
Dollie works at Central Shops, and hails from South Bend, Indiana.



Earl M. Luseman
Armature Winder
This week's question was no poser for Luseman, as he firmly replied, "Why should we stay on the job? That's easy for me to answer—I've got a boy in this war over in France."
The rest of Luseman's family is "back home," which means Winchester, Kentucky. But he proudly wears a "Stay-on-the-Job" button to announce his intentions to see this job through.

Richland Thrifty Drugs

Heart of the Shopping Center

Goethals and Knight

Phone 640



CHRISTMAS GIFT HEADQUARTERS

FOR HER

Musical Powder Boxes
3.95 to 9.95

Dresser Sets
5.95 to 19.95

Perfumes
Toilet Water
Colognes
Dubarry
Yardleys
Pinauds

Dorsay
Cara Nome
Dorothy Gray
Elizabeth Arden
de Raymond
Jewelle
Shai
Tabu
Persian Lamb

Costume Jewelry
Ear Rings
Lapel Pins
Bracelets

FOR HIM

Yellow Bole Pipes
5.00—7.50—25.00

Travel Kits
4.95 to 14.95

Shaving Sets
Yardleys
Seaforth
Renleigh

Billfolds
Key Purses
Tobacco Pouches

Fountain Pen
Pen and Pencil Sets

FOR THE CHILDREN

Guns
Stuffed Animals
Games
Toys
Stationery

— SEE OUR TOYLAND —

Women's Hall Adds Service

The Women's Refreshment Center opened its doors for light lunches during regular mess hall hours on Monday of this week. Soup, salads and the usual sandwiches are now available for noon and night meals, as well as through the day.

It is stressed that this center will remain open until 2:00 a. m. on nights when a name band appears at the Hanford Auditorium and for special holiday dances. This will apply tonight, when Ted Weems plays for local dance fans.

Pinch pennies but not your fingers.

Xmas Seals Are on Sale

Sheets of the familiar Tuberculosis Christmas Seals were sent out this week to aid in the annual campaign to raise funds to combat tuberculosis.

Purchase of the stamps for individuals wanting to add their traditional sentiment to Christmas letters and packages may be made at the following places: Red Cross Hut across from the Community Building in Hanford, the new Red Cross headquarters in Richland, the Kennewick Printing Company in that city, Grending's Store in Benton City and the Golden Rule Store in Prosser.

ACCIDENTS HELP THE AXIS



Safety: Worktime planning for playtime pleasure.

Payroll pays on Friday, But safety pays every day.

B. F. GOODRICH PRICES

Automobile Tires and Tubes

Made With Synthetic Rubber

New Location

On Division St. Next to Sears & Roebuck

YOUR TIRE INFORMATION

— FREE —

TIRE INSPECTION AND MOUNTING OF NEW TIRES

SILVERTOWN S-3 TIRES

Size	Ply	Each	Plus Excise Tax
7.00-15	4	\$21.55	\$1.40
6.00-16	4	16.05	1.11
6.00-16	6	20.10	1.35
6.25/6.50-16	4	19.50	1.28
6.25/6.50-16	6	24.45	1.48
7.00-16	4	22.10	1.47
7.00-16	6	27.65	1.68
7.50-16	6	35.10	2.07
5.25/5.50-17	4	14.75	1.10
5.25/5.50-18	4	13.45	1.04
4.75/5.00-19	4	12.05	.91
4.40/4.50-21	4	12.00	.88

These prices apply to all S-3 Passenger Tires, regardless of tread design.

COFFEE

The Kind You Really Like

WHERE?

at the

Bowling Alley

Of Course Real Fountain Service

— WANTED —
Pin Setters
Full or Part Time

Hanford Cage Stars to Meet East Oregon College Quintet

Next Friday night, the Hanford Stars will officially open the local basketball season when they take the floor against the strong Eastern Oregon College quintet from La Grande, Oregon. The game will start at 8:30 p.m., and it will be preceded by a game between one of our local girls' teams and the Richland girls.

The Hanford Stars are a team composed of some of the better players making up all the team in in the Hanford-Richland area. At this writing the players have not been definitely selected for the team, but some twenty boys have been trying out and the ten best players will be on hand next Friday.

Little is known about the Oregon team, except that according to their information brochure sent out by their publicity man, the team figures to be one of the best to represent the school in several years.

This game should be interesting inasmuch as it will afford the fans of Hanford an opportunity to see for the first time the local team that will represent this Project against some of the strongest basketball teams in this part of the country. Already signed to come to Hanford are: Harlem Globetrotters, one of the most colorful teams in the land; University of Washington Huskies—last year's Pacific Coast Champions; University of Oregon; Gonzago University; Whitman College, and the Alpine Dairy of Seattle, Washington, A.A.U. champions of last year. Arrangements are being made to bring in several other strong college and independent teams.

All games are being sponsored by the H.E.W. Employees Association, and the Hanford Recreation Department. There will be no admission for the Eastern Oregon game.

Postpone Boxing 'til Dec. 18

The boxing show originally scheduled for next Monday night, at the Hanford Auditorium has been postponed until December 18. This change in dates was necessary after the Recreation Department was unable to line up a suitable opponent for Leo "The Lion" Turner, Portland middleweight, who had been signed to appear in the main event on the December 4th card.

A real shortage of high grade middleweights exists here in the northwest, and attempts are being made to find a capable fighter to meet the highly regarded Turner in some other section of the country. Feelers have been put out down in California where most of the good boys are now working. Turner, considered by many ring critics to be one of the finest middleweight prospects in the country, would be a fine attraction here in the local ring—if the right opponent can be found.

In the semi-windup on the December 18th card, a return match between Kelly Jackson of Vancouver, Washington, and Jimmy Hogan of Seattle has been arranged. These two boys fought to a draw here at the local arena back in September. Fight fans are still talking about that sizzling encounter, and their return match should be a real thriller. There will be three other supporting bouts on the card—with the contestants yet to be named.

Eight-Team Tourney Set

The Hanford Recreation Department announced this week complete plans for the big invitational basketball tournament to be held at the Auditorium on December 12, 17 and 31. Eight teams have been sent invitations to compete in the tournament, which is being sponsored by the H.E.W. Employees Association as part of the gigantic Christmas entertainment program.

The first round will be played Tuesday night, December 12, with all eight teams scheduled to put in an appearance. The four winners will hook-up in the semi-final round on Sunday afternoon, December 17, and on Sunday, December 31st, at 3:30 p.m. the championship game will be played. The final game will be preceded by a game to determine third place.

Appropriate prizes will be awarded by the Employees Association to the winning team and also to the runner-up. The Auditorium court is one of the finest in this part of the state and has a seating capacity of several hundred fans. There will be no admission for any of the tournament games.

son, Rose, Bailey, Merritt, Frady and Harryman.

Time Office players were Struck, Osterman, Mikesell, Albright, Apertson, Buckholtz, Sisson, Ander-

Local Teams Off to Start

First basketball games of the season were played at the Auditorium last Friday night, featuring a contest between the Olympic Commissary and Time Office girls' teams, while the Concrete and Masonry quint played Pasco Naval Base.

The girls' game was evenly matched, with Olympic taking a two-point edge to win 16-14. Scoring was widely distributed, no player making more than three points.

The sailor boys ran riot, scoring time after time from the field, to defeat the local aggregation to the tune of 43-17. Forward Blizzard, of the Pasco team, was high point man for the game, totaling 7 markers. Leading the Project cagers were Tomazin, with 5 points, followed by Chuck Foster with 3.

Making the Concrete and Masonry team in Friday's game were Anderson, Kessling, Zacovic, Peterson, Tomazin, Showker, Foster, Seivers and Rinehart.

The Olympic Commissary feminine cagers included Farmer, Robertson, Buckholtz, Sisson, Ander-

Economy Drug Co.

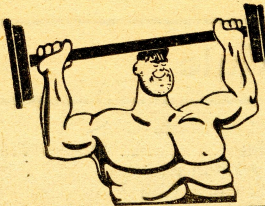
In the Center of the Shopping Center
HANFORD

DO YOUR CHRISTMAS SHOPPING
EARLY

Toys — Games — Perfumes
Colognes — Gift Sets — Wallets
and Jewelry

New Shipment
CIGARS
Tampico Straights

\$7.50
Box of 50



But FLU is tougher.

GET MEDICAL CARE EARLY

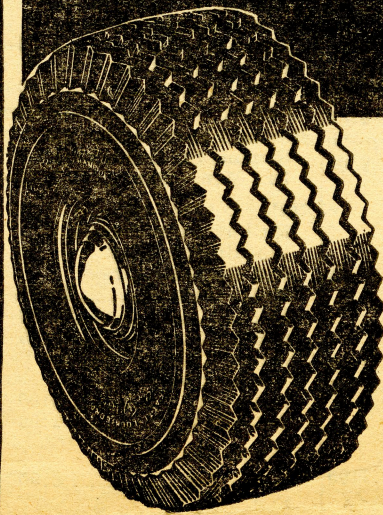
Firestone

TWO LOCATIONS HANFORD

AVE. A STORE
2 Blocks West of Ad Bldg.
on White Bluffs Highway

AVE. B STORE
First Hutment
West of Mess Hall No. 4

ALL B AND C BOOK HOLDERS
ARE NOW ELIGIBLE FOR
NEW
TIRES

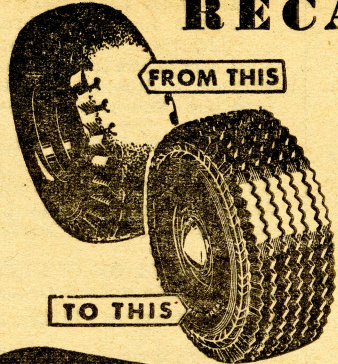


Come in and get the facts about the new O.P.A. Tire Rationing Regulations. We are Tire Headquarters.

Buy the
Firestone DeLuxe Champion
Built of American-Made Rubber
Grade 1 Tire Certificate Needed

6.00-16 **16.05** Plus Tax

Factory-Control
RECAPPING



6.00-16 Tire **6.70**

For longer mileage and greater safety, have your tires recapped by the Firestone Factory-Control Method. Our recaps are guaranteed.

No Rationing Certificate Required

ALSO LARGE STOCKS OF

- Batteries
- Automotive Parts (complete stocks)
- Anti Freeze (bulk and gallon jugs)
- Radiator Cleaner
- Radiator Solder
- Kakhi Work Pants
- Kahka Work Shirts
- Gloves
- Leather Jackets
- Men's Luggage
- Underwear
- Sox

Operated by
Contractors Sales & Service

PHONE 8526

SANDY SAGE: Song Without Words



Business Schedule

Classified Ads

Village Page
Teams In Play

SHOPPING		A.M.	P.M.
Anderson, C. C., Stores	Co., Goethals Dr. & Lee Blvd., Mon.—	Thurs. 10:15—6:00	Fri. 12:30—9:30
Bank, Richland Office of	Seattle First National Knight Ave., Mon.—	Fri. 10:00—3:00	Fir. Eve. 7:00—9:00
Barber Shop, Ganzel's	Mon.—Sat. 8:30—8:30		
Beauty Shop, Siler's	Mon.—Fri. 8:00—7:00	Saturdays 8:00—5:00	
Cafeteria, Richland, Goethals Drive & Knight Ave., Mon.—	Sat. 5:30—8:00	11:30—1:30	5:30—8:00
	Sunday 10:00—2:00	4:00—8:00	
Cashier, Administration Bldg.	Mon.—Sat. 8:00—4:30		
1st Fri. in Month & Last Full Banking	Day 8:00—8:00		
Transient Quarters	Coffee Shop, Mon.—	Fri. 7:00—10:30	Sat. 11:30—2:30
		5:30—8:00	
	Sunday 8:00—10:30	11:30—8:00	
Drug Stores:			
The Drug Center, 708 Symon St. next to Garmo's Grocery	Mon.—Sun. 9:00—10:30		
Richland Thrifty Drug, Jackson St., next to theatre,	Mon.—Sat. 6:45—11:00	Sunday 9:00—11:00	
Food Stores:			
Garmo's Food Store	Goethals Drive & Symons St. Mon.—Sat. 9:00—7:00		
Randall and Doyle	George Washington		
Way & Lee Blvd.,	Mon.—Sat. 9:00—7:00		
Safeway Food Store	Goethals Dr. & Lee Blvd., Mon.—Sat. 9:00—7:00		
Hospital, Kadlec, Guthrie & Swift Aves.,	Visiting hours 2:00—3:00	7:00—8:00	
Pharmacy, Mon.—	Sun. 8:00—4:30		
Dental Service, Mon.—	Sat. 9:00—6:00		
Laundry and Dry Cleaners, Richland, Cullum Ave. & Gillespie St.,	Mon.—Sat. 8:00—8:00		
Morning Milk Co., also Ice, Cullum & Gillespie St., Mon.—Sat. 9:00—4:30	Mon. night 7:00—9:00		
Post Office, George Washington Way and Knight Ave., Mon.—	Sat. 8:00—6:00		
General Delivery	Mon.—Sat. 9:15—6:00		
Rationing Office, George Washington Way & Swift Ave., Mon.—	Fri. 8:00—7:00	Saturdays 8:00—5:30	
Richland Motor Co., Goethals Dr. & Newton Ave. Garage Hours,	Mon.—Sat. 8:00—6:00		
Service Station,	Mon.—Sat. 7:00—8:00	Sunday 10:00—8:00	
Standard Service Station	Symons St. & Goethals Dr., Mon.—Sun. 7:00—10:00		
Style Center, on the Mall between George Washington Way and Goethals Dr.	Mon.—Thur. 10:15—6:00	Fri. 12:30—9:30	Sat. 10:15—6:00
Theatre, Richland, George Washington Way,	Mon.—Fri. 5:00—11:00	Sat.—Sun. 1:00—11:00	
Western Union	Mon.—Sat. 8:00—10:00	Sun. and Holidays 9:00—11:00	4:00—6:00

RATE—5c per word—minimum 50c per ad.
Deadline Monday 12:00 Noon before Friday of publication.
Ads may be paid for by check or in cash at Hanford office of The Sage Sentinel in Training and Relations Building on Kadlec Plaza or at Richland Construction Area Personnel Office in basement of old High School Building on Cullum Avenue by Tuesday of week of Publication.

FOR SALE

1938 Pontiac. Four new tires. Heater, radio. Good upholstery. Call R-566 after 6 p.m.

Cream colored LaSalle—Four door Sedan. Radio. Very good condition all around. PRICED BELOW CEILING. Contact Sage Sentinel.

40 series Buick Sedan. 5 new tires. Radio and heater. Good condition. Hanford, Contact Sage Sentinel. Richland, call 164.

Late '41—24½' Glider trailer, complete. Electric brakes, double floor, indirect lighting. Duo-therm with blower. Good tires, extra rim. Ready to pull. \$1475. Section X, Block 3, Lot 15.

Exclusive styles fashion frocks. Mrs. William A. Shanks, 1301 Thayer, Richland.

Two riding horses and equipment. F. H. McDonald, 602 Taylor Street, Richland. Phone 747.

24" Squirrel Cage Desert Cooler—with ½ h.p. motor and 40' copper tubing. Cost new \$125. Used some 40 hours—\$75.00 Cash. See at Section F, Block 2, Lot 10, Hanford Trailer Camp—Evenings.

Heavy, winter overcoat, almost new, size 44. Inquire Barracks 81, Room 31, after 7 p.m. or Sundays.

One Coleman gas heater. One large Chevrolet hot water heater. Section J, Block 4, Lot 41.

U. S. Springfield 30-06. 75 shells. Case and sling. 607 Torbett St., Richland after 6 p.m.

Like new 22 Remington rifle with case. Mohair chair and ottoman. End and coffee tables. Pre-war floor lamps. Plate glass mirror and metal smoking stand. George Krauser, 1523 Mahan Avenue, Richland.

SHRUBS, EVERGREENS, ORNAMENTALS. Home Nursery, 304 Second Avenue East, Kennewick.

20 acres; 8 room house; modern except heat; good barn; grapes and asparagus; fruits for family. 6 miles east on River Road, across from Hedges depot. Mabel Williams, R1, Box 118, Kennewick.

One sheepskin coat, 42 chest 32 sleeve. One new ponyskin leather jacket, 42 chest, 34 sleeve. 3 boxes 30-30 ammunition. One hat, size 7¼. Jess Lee, Barracks 74, Room 31.

Baby coach and play pen. Excellent condition. WANT TO BUY large tri-ble and doll's coach. Call 1291-W.

Handmade lapel and doll's, pot holders, beanies, baby booties and bibs. Also Healthspot ladies shoes, 10AA. Section Q, Block 2, Lot 38.

Large maple baby crib with inter-spring mattress. 1331 Stevens drive, Richland.

Remington portable typewriter like new. Suitable for Christmas gift. Room 91, Barracks 114, Hanford.

Two end tables, two chests of drawers. 1405 Farrell Lane, Richland. Phone 1216-W.

Genuine black Russian pony coat. Like new. Size 14. Reasonably priced. Phone R-1051-W.

18' factory built trailer and 30 Chev. Both in excellent shape, good rubber. Both for \$675. Section I, Block 2, Lot 12.

Dining room suite, also smaller table and chairs. Bed, end table, lamps, crochet set and fruit jars. Richland.

'41 Red Arrow Trailer 16 foot. Sleeps four. Good condition. Light-Lester E. Simmons, 209 Davenport,

Richland Radio Club
To Meet on Tuesday

At the next meeting of the Richland Radio Club on Tuesday at the Sacajawea Grade School there will be the regular code class at 7:30 p.m. and the special lecture series on Fundamentals of Radio by Ben Willingham will begin at 8:30 p.m. The lecturer's subject for this meeting will be "Direct Current". A knowledge of arithmetic is the only

weight. \$650.00. Section B, Block 1, Lot 17.

Double breasted navy blue suit, almost new. Size—coat 40, trousers 33-34, heavy oxford gray, tall 40. Not home Friday or Saturday. Section W, Block 3, Lot 32.

FOR RENT

Room and board for couple or day worker. 10 Everett Street, Kennewick.

To couple—Half house or bedroom with kitchen privileges. Type A house on or about December 15. Call R-174.

WANT TO BUY

Tricycle in good condition for 5 year old. Call 1285-J.

Dishes—32 or 54 piece set. Cooking utensils. Drapes for Type A house. Call R-174.

Woman with tiny baby and small child wants electric washer. 220 Atkins Ave., Richland. Phone R-1046-J.

One electric washing machine. CASH. Call R-735.

Two wheel trailer. Good condition. With or without tires. Prefer wheels interchangeable with 1941 Chevrolet. Box 1203, Richland.

8 mm. movie projector. Call R-681.

HELP WANTED

Messengers wanted—boys, girls 15 and older to work for noon and evening. Adults with automobiles, full time work. Western Union, Richland.

Watchmakers for steady employment. Inquire A. W. Anderson, Weisfield and Goldberg, Jewelers, Hanford.

Girl to iron. Call R-44.

LOST

Lost—Nursing school diploma, Jean Smith. Finder please contact Sage Sentinel.

Lost—Will person who borrowed crescent wrench—C.C.C. stamped on head—please contact C. C. Coleman. Section W, Block 3, Lot 32.

WANTED — MISCELLANEOUS

Room. Young couple working days desire room in Richland. Kitchen privileges desirable. M. F. Cote, 1406 McPherson, Richland.

Man wants ride to Des Moines about 4th or 5th. Share expenses. No drinkers. Inquire Barracks 59, Room 2.

MISCELLANEOUS

KEYS made for any lock. WOOD'S KEY SHOP. 16 Kennewick Ave., Kennewick, Wash. In the Columbia Electric Shop.

Have pick-up truck. Let me move you. Local hauling. Jess Lee, Barracks 74, Room 31.

For information regarding automobile fire and burglary insurance call R-643. Fire rate per thousand, residence with shingle roof \$3.31, composition shingle roof \$3.00 per year. Minimum rate \$5.00.

Church of God folks and friends (Gospel Trumpet Co.) please contact me by mail. Rev. R. L. Austin, Box 516, Pasco, Washington.

Girl seven years old would like dancing lessons. Ira Nelson, 702 Stanton, Richland.

Farmers Group Insurance for automobile and trailer homes. Section L, Block 2, Lot 14, Hanford.

Children cared for in responsible home. 35 cents by the hour. Special rate by day. 1022 Sanford, Richland.

requisite for this course.

The regular Radio Club meeting was held on Tuesday, November 21. There were 19 members present at the code class that is making rapid progress. At the meeting, A. L. Mitchell, a visiting engineer on wind velocity recording equipment, gave an excellent lecture on the Robinson 3 cup rotor wind velocity recorder.

BUY MORE BONDS
In Sixth War Loan Drive

Church Services

Sunday, November 24, 1944	
CATHOLIC SERVICE	
Father W. J. Sweeney	
Grange Hall	
Sat., 2 p.m. Children's Class.	
Sun., 7 and 11:30 Mass.	
UNITED PROTESTANT	
Rev. Thomas Acheson	
Rev. Kenneth Bell	
Sacajawea Grade School	
9:45 a.m. Sunday School	
11:00 a.m. Sunday Service	
6:30 p.m. Youth Fellowship Meeting.	
8:00 p.m. Church Service	
LUTHERAN CHURCH	
National Lutheran Church	
10:00 a.m. Sunday School.	
11:00 a.m. Church Services	
J. Milton Grimsrud, Pastor	
Community Church	
EPISCOPAL CHURCH	
Rev. Leo Dyson	
Sun., 10:00 a.m., Sunday School.	
Lewis-Clark School, Room 107.	
Mon., 8:15 p.m., Church Service,	
Community Church.	
LATTER DAY SAINTS	
James Thompson, Pres.	
Jefferson Grade School	
9:30 a.m. Priesthood meeting	
10:30 a.m. Sunday School	
6:30 p.m. Sacramental meeting	
LUTHERAN (Missouri Synod)	
Rev. R. E. Jaech	
Lewis Grade School Auditorium.	
10:00 a.m. Sunday School.	
11:00 a.m., Church Service.	
CHURCH OF CHRIST	
Lewis Grade School (Room 115)	
Sunday Services: 10:30 a.m., 7:30 p.m.	
CHRISTIAN SCIENCE CHURCH	
Room 112, High School Bldg.	
9:40 a.m., Sunday School.	
11:00 a.m., Church Services.	
Wed., 8:00 p.m. Services.	
National Lutheran Council	
Columbia High School.	
Rooms 118, 136, 139, 140.	
10:30 a.m. Bible Study.	
11:30 a.m. Worship.	
7:30 p.m. Evening Service.	

SEE RICHLAND BOND PREMIERE

BUY BONDS
The Jaycee Way

1. FOR YOUR COUNTRY

2. FOR YOUR SECURITY

3. FOR YOUR PLEASURE

SEE—

"When Irish Eyes Are Smiling" and
Other Outstanding Added Attractions

RICHLAND THEATRE - DEC. 6

Admission by Purchase of War Bonds
at Richland Theatre OnlyRICHLAND
THEATREFri.-Sat. Dec. 1-2
MOONLIGHT
AND CACTUSAndrew Sisters and
Leo CarilloSun.-Mon. Dec. 3-4
MUSIC

IN MANHATTEN

Anne Shirley

Dennis Day

Tues.-Wed.-Thur.

Dec. 5-6-7

HAIL THE

CONQUERING

HERO

Eddie Bracken

Ella Raines