

Extra copies

# The SAGE Sentinel

PUBLISHED WEEKLY BY AND FOR  
EMPLOYEES OF HANFORD ENGINEER WORKS  
Not To Be Mailed or Taken From The Area

F. H. L.

VOL. 1, NO. 28

FRIDAY, JUNE 16, 1944

RICHLAND, WASH.

## Bond Drive Goes Ahead

The first five days of the Fifth War Loan Drive show that Hanford workers are behind the invasion forces, Hanford and Richland banks being rushed since Monday with the army of bond buyers.

As the month-long campaign progresses, a record of the craft standings are being posted on the Bond Board in front of the Time Office. Using weighted averages to allow for size and pay in various crafts, each department will have an equal chance to win in the competition.

### Buying Made Easy

To facilitate bond purchases, bond windows are open at the Hanford bank Monday through Friday and from 7 p.m. to 9 p.m. Friday.

In Richland, bonds will be sold during regular banking hours from 10 a.m. to 3 p.m. Monday through Friday and from 7 p.m. to 9 p.m. Friday.

The badge number and department should be stated when buying bonds so that the proper credit can be given in the competition.

Two bond trucks are cruising and will continue to cruise throughout all Areas for the four weeks of the drive, selling bonds directly to the men on the job. Pledge forms have been distributed throughout the crafts and departments.

### ON THE MONEY

Five fellows in concrete started an "invasion pool" last April, speculating on when the European push would come. Ralph Erickson hit the date, June 6, right on the nose to win the pot. But here's the angle—his winnings will go into war bonds.

### RECREATION GROUPS FORMED

Supervised recreation for Richland children has been extended to include various sports and games. There is no age limit for eligibility and all children are urged to come.

Girls meet Monday and Friday from 10 a.m. to 11 a.m. at the Grange Hall Diamond under the supervision of Eleanor Amend. Boys meet at 9:30 a.m. Tuesday and Thursday at Cemetery Field with Don Birst in charge.

### Nabbed For Speeding

Two plant employees had their driving privileges suspended for a period of 30 days last week for speeding violations. Release of the information was given as a warning to all other motorists.

## Safety Contest Nears Finish

In its final three weeks of competition, the Safety Picture-Puzzle Contest lists the eighth picture of the series today.

Carpenters continue to lead the crafts in entries. Central Safety points out that the race is not over yet, and anyone still has a chance for the 21 prize-awards. Reprints of the first seven pictures may be obtained from field foreman for solution.

### Bulova Watch Given

First prize for the workman finding the most hazards in the 10-picture series is a 21-jewel Bulova wrist watch. Other prizes are table radios, \$25 War Bonds, Parker pen and pencil sets, flashlights, pipes, belts and billfolds. All are on display at the Sears Store.

Rules of the contest are on page 4 of this issue, together with the eighth picture-puzzle of the series.

## New Health Center And Infirmary Are Opened; First Aid And Clinic Relocated

The new Health Center and Infirmary Building, which will house the Health Center Unit, the Psychiatric Unit, the Sick Bay Unit, and the Contagious Disease Unit, will open on or about June 15, it has been announced. The new building, which is equipped with facilities modern in every respect, is located east of Division Street just north of the Pasco Road.

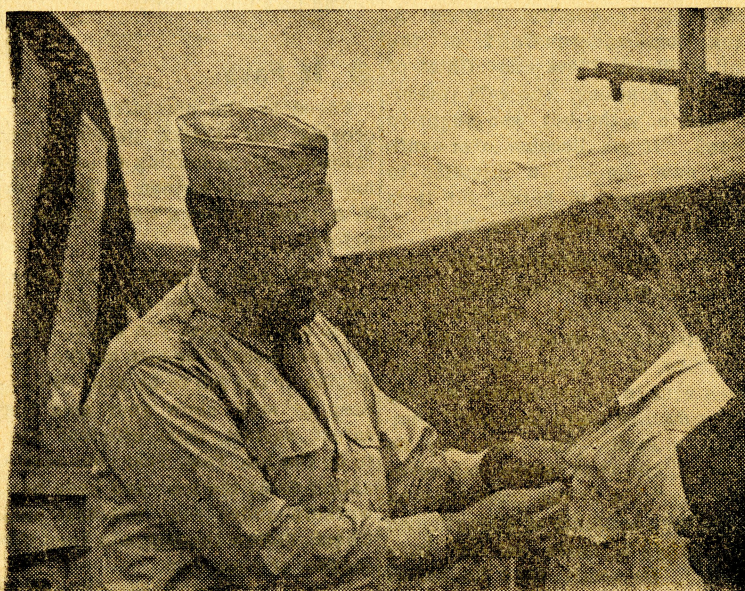
At the time this building is put into service, the existing Sick Bays will be discontinued. Employees suffering from minor illnesses, the type of which were previously treated in Sick Bay, and convalescent patients from the Hospital, will be treated here. The rate for Infirmary patients will be \$2.50 per day which includes room, board, all medications, necessary services, and routine floor physician's service, excluding surgical fees, laboratory, and X-ray charges.

In view of the fact the cases handled in the Psychiatric, Contagious Disease, and Health Center Units are considered of interest to the general project welfare, there will be no charge for these services. It is therefore earnestly requested that all individuals requiring the services of these units give their full cooperation.

### Rearrangement of Facilities

At the time the new facilities go into operation, the following rearrangement of the existing Hospital

## Silver Star to South Pacific Veteran



At ceremonies held last week on the project, the Silver Star was awarded to Clair W. Arrowwood, a truck driver in the H.E.W. Transportation Department, shown above at the presentation. Citation for the World War II veteran read: "Clair W. Arrowwood, Private, Infantry, United States Army, for gallantry in action on Guadalcanal on November 10, 1942. During a hotly contested attack on an enemy ammunition and food supply train, Private Arrowwood, disregarding his personal safety, picked up an enemy hand grenade and tossed it back into their lines, causing considerable damage. Then, after his squad leader and corporal became casualties, Private Arrowwood assumed command of his squad and let it successfully in subsequent operations."

## Johnson Speaks at Richland on Tuesday

By popular request, C. O. Johnson, Professor of American Government in Washington State College, will return to Richland Tuesday to open the community Forum Series by speaking on "Americans of Tomorrow."

The lecture is scheduled for 8:30 in Columbia High School.

Facilities located in the Administration Area will be made: First Aid Station, which is at present in the Hospital Building, will be moved to the old Employment Building, which is being renovated and will become an addition to the Hospital. Entrance to First Aid will be on the west side of the building next to the parking lot.

The Hospital Clinic will be moved from its present location at the east end of the Hospital Building to the building formerly housing the Investigation Section and adjacent to the Employment Building. Entrance will be on the west side next to the parking lot. First Aid and the Clinic will continue to operate as in the past and it is expected the new facilities will permit the offering of a more complete service.

## Absenteeism Hits New Low of 7.2 Per Cent

Absenteeism on the project reached a new low figure of 7.2% as thirteen of the crafts improved their standings. The Bricklayers set a blistering pace with 3%, followed by Electrical 4.1% and Pipe 5.9%.

Crafts which improved their standings included: Bricklayers, Electrical, Piping, Carpenter, Paint, Rigger, Labor, Concrete, Reinforcing, Mechanical, Carpenter Labor Transportation and Concrete Labor.

The standings of all the crafts: First, Bricklayers; Second, Electrical; Third, Piping; Fourth, Carpenter; Fifth, Paint; Sixth, Rigger; Seventh, Labor; Eighth, Concrete; Ninth, Reinforcing; Tenth, Mechanical; Eleventh, Carpenter Labor; Twelfth, Earthworks; Thirteenth, Transportation and Fourteenth, Concrete Labor.

## H. E. W. Employees Earn Merit Award Cards

Merit Award Cards will go forward soon to H.E.W. employees whose suggestions made during Job Improvement Week are accepted, it was announced today.



# THE SAGE SENTINEL

"Let's All Hew To The Line!"

Vol. 1, No. 28

Friday, June 16, 1944

Editorial suggestions and contributions should be sent to the Editor, Information Service Building, handed to your foreman, supervisor or placed in suggestion boxes. Deadline for all copy is one week previous to publication. Phone Extension 8661.

Copyright, 1944 by Hanford Engineer Works. The information contained in this publication shall not be communicated to the public or press. Requests for permission to reprint any or all of the contents must be made in writing to the Management, Hanford Engineer Works, P.O. Box 429, Pasco, Washington. No advertising can be accepted.

## ● Not Yet

"The end of the war is close at hand." That statement is not true, according to Admiral Ernest J. King, Commander-in-Chief of the United States Fleet and Chief of Naval Operations, who said recently (and he's the boy who ought to know), "If we become over-confident now, we do an injustice to those who are in battle, for it is they who will suffer if we fail."

Expressing something of the same sentiment and no less sincere in his statement deploring wishful-thinking job-quitters is one of H.E.W.'s own men, B. S. Dunaway, who last week sent in a contribution asking, "Why do men leave this job?" Dunaway, a realist and certainly no dope, admits that "home was never like this," but at the same time he faces the possibility of a lengthened war "if we at home let our boys down." Earnestly (and he knows what he's talking about too, for he's

been over there) he ends his plea with, "Let's all give out. Let's stay on the job. This war isn't won yet."

And he's not kiddin'.

## ● It Pays

Faced by the necessity of improving our safety performance, Management is looking to supervision and to the foremen to stress S. T. A. these next two weeks as never before.

Here's your "HOW," foremen. You're carrying the ball now, and these are the rules you know: Tell. Be sure to tell your men all the conditions of the job to be done. Show. Step by step, show your men the safest, easiest, most efficient way to do the job. Test. Test your men's ability to do the job - and keep new workers under your watchful eye. Check. Follow through and keep the respect of your men.

That's Safety Task Assignment.

## Excise Tax Levied On Trailer Houses

Ben Knox, Benton County Assessor at Prosser, has issued the following statement in regard to a Motor Vehicle Excise Tax collectable in 1944:

"The act defines a 'motor vehicle' to include a trailer, 'including facilities for human habitation.' Therefore it indicates the legislature's general intention that a coach trailer should be taxed by excise and not as personal property. However, trailers used entirely upon private property shall be taxed ad valorem as personal property.

"All trailer owners are advised to pay excise tax, and they will be free to move over the highway at will. You are urged to pay this excise tax by June 15, 1944 (if you have not already paid it), or be assessed as personal property, which might result in paying a double tax."

## "On the Beam" to Feature All Offices

Monday begins an "On the Beam" program for project offices. Attention will be drawn during that time to good housekeeping, safety, and personal effort.

The "Beam" will be directed on the various offices, and its light is expected to reveal any hidden coke bottles, open desk drawers, unsecured file cabinets or other hidden office skeletons.

## Joins Church Staff

Carl Blanford, theology student from Princeton Seminary, has joined the United Protestant church staff. He will work with young people's groups throughout the summer.

## Employees, Patrol Set Lower Accident Rate

Complimenting project employees and highway patrolmen on their effectiveness in reducing vehicular accidents, the traffic department has announced a more than 20 per cent reduction in the number of accidents since January 1—and this in spite of the fact that traffic has increased nearly one-fifth during that time.

Calling attention to the fact that there have been no fatal highway accidents since January, the department gave credit for the encouraging record to two factors—increased cooperation of motorists and efficiency of a skilled patrol force.

### Strive to Lower Rate

"If H.E.W. employees continue to cooperate with the highway patrol," a traffic department spokesman said, "they in turn can give us what we all want—protection from careless drivers and a further lowering of the accident rate."

Most frequent cause of accidents, the traffic survey shows, is negligent and careless driving, with improper backing the next heaviest "danger don't." Failure to make arm signals, following too closely, speeding, ignoring stop signs and condition of roads are other traffic accident causes which patrolmen are campaigning to minimize.

## Sports Gear Available

Employees on this project may secure many different types of sports equipment for their personal use from the Recreation Department Storage & Check-out Room in the East End of the Recreation Hall No. 1 (Linen Room). There is no charge for the use of this equipment, and it may be checked out any week day from 9:00 a.m. 'till 9:30 P.M. The room will be open on Sundays from ten to eleven in the morning and from three to four p.m. in the afternoon. Equipment available at the present time include: Softball and baseball equipment; tennis rackets and balls; badminton sets, archery, horseshoes, croquet sets, ping-pong and many others.

### HELP KEEP DRAINS CLEAN

Broken bottles, socks and underwear and children's toys—these are some of the items found "down the drain" when workmen dig up plugged pipe lines. Pointing out that repairing sewers ties up men who otherwise could be doing productive work, housing authorities asked that more care be observed in using tubs, toilets and lavatories.

Suggestions made by the housing department to cut time lost in sewer repair are: clean out drain after shampooing hair in wash bowls, remove lint from laundry tubs after washing clothes, leave floor screens in place when emptying washing machines, keep the drain under trailers covered and instruct your children not to throw toys, pebbles and other foreign objects in the drain or toilets.

### Plans Service Club

Interest in "Gyro," an international service club, has prompted W. A. Hicks of Expediting to attempt an organization of project employees here. Members from chapters "back home" may contact Hicks at 8244 for information.

Because of space limitations the Business and Ration calendars have been omitted this week.



**Douglas White**  
... electrician

"How do I feel about the Allied invasion?" White countered.

"Well, I guess I feel scared for the boys over there. I was in the Army Air Corps for three-and-a-half years, and while I never got to see any active duty, a lot of my buddies have gone across. They're all brave and patriotic and will do the job—but I think they'll always be scared too. You don't ever get over being scared."

A native of Carlsbad, New Mexico, White, tall and lean, lives in the barracks.



**Marley Fitzgerald**  
... layout

No armchair general is Fitzgerald. He declines having any feeling about the European invasion but that of confidence in Eisenhower, Montgomery and others of the Allied Command.

"I'm sure their judgment is sound" he says, "and if they feel it's time for the big push—then it's time."

Deeply-tanned, Fitzgerald spent the last two years in the British West Indies on airfield construction. His wife and daughter live in Ocean City, New Jersey.



**E. J. Svenson**  
... re-inforcing steel

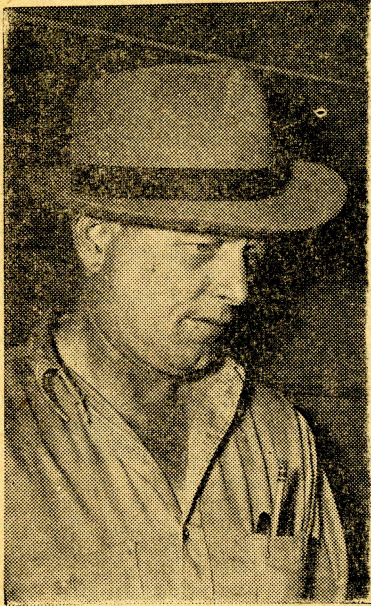
Rodbuster foreman Svenson hesitantly spoke of being rejected for military service, but was forceful in saying, "I sure wish I could be in that fight right now."

Doing war construction work, he has been on du Pont jobs four years; finds a trailer a good investment for his wife and young daughter, Gloria.

Referring to his non-military record, Svenson, a little sadly, admitted, "I had a lot of R.O.T.C. at Iowa U., but that didn't seem to impress Selective Service."



## Honor Dads



Typical of fathers is L. E. Foster, ladder foreman, who wonders with the coming of invasion 'How about my boy?' Honoring Dads Sunday, H.E.W. takes off its hat on Father's Day to those men who have come to Hanford so that they might have a part in keeping their children free. Foster, whose home is Grangeville, Idaho, has an only son in the Army Air Force overseas from whom a letter is past due.

### Feet Tired?

Powdered Boric Acid in socks as a remedy for "hot feet" is a sug-

## Schedule Sunday Bus For Richland Residents

To enable residents of Richland to attend Sunday church services and other special meetings in the new Columbia High School, the Symons Street bus schedule for Sunday only will be: 9 a.m. through 1 p.m., and 5:30 p.m. through 9:30 p.m. The bus will turn at Williams Boulevard and Thayer Drive, go to the high school and return via Long Avenue to the regular route on Williams.

At all other times, unless further special arrangements are made, residents going to the new high school should ride the Symons Street bus to the corner of Stevens and Williams, and then walk two blocks southwest on Long Avenue.

### REPORT FOUND ARTICLES

A variety of lost articles remain unclaimed at Richland Patrol Headquarters. Among them are billfolds identified as belonging to Lennell Clayton, Bob Galbraith, Noble Smith, Harold L. Gregory, Rollin J. Kilkenny, John G. Durham and James R. Belvail.

Other items found are a Ration Book No. 4 registered for Merilyn King of Cheney, Washington, and an envelope containing personal papers belonging to Joe Conquista.

gestion made during Job Improvement Week by D. T. Di Bello of the Traffic Department. His "prescription" is a teaspoonful of the powder sprinkled in the sock foot. From experience, Di Bello testifies that his remedy for hot, tired feet is inexpensive, antiseptic and healing. He suggests too that frequent changes of socks are helpful.

## Revoke Car Privileges For Ration Violators

Cars of 28 persons were grounded last week in trials at Kennewick when OPA attorneys found the owners, including some Hanford residents, guilty of gasoline ration violations. The car "lock-ups" were for periods of from 30 days to six months.

Charges were based on illegal deposit of expired coupons with dealers for delivery of gasoline at a later date. OPA officials are continuing their investigations in this vicinity.

### OBSERVE "SPOTLIGHT" WEEK

Using the slogan "Olympic Spot-lighted," the Commissary Company observed the week ending June 4 to stress safety, sanitation, good housekeeping, morale and absenteeism.

Management reports a highly successful campaign and wishes to thank the entire Olympic force for its past and continued cooperation.

### Richland Softball Schedule

Friday, June 16

Area 145 vs. Patrol—Cemetery Field  
Cafeteria vs. Coordinate Club— Old High School.

Engineers vs. Technical — Dormitory K-8.

Layout vs. Stores—Dormitory K-8Y

Tuesday, June 20

Layout vs. Cafeteria — Cemetery Field.

Patrol vs. Technical — Old High School.

Stores vs. Area 145—Dormitory K-8  
Coordinate Club vs. Engineers — Dormitory K-8Y.

The will power of men would get a lot further if it weren't for the won't power of women.

## Richland Theater

Friday and Saturday, June 16 and 17—  
CURSE OF THE CAT PEOPLE, with Simon Simone and Kent Smith.

Sunday and Monday, June 18 and 19—  
UP IN MABEL'S ROOM, with Dennis O'Keefe and Gail Patrick, plus 20 minutes of D-Day Invasion Plan News.

Tues., Wed., and Thurs., June 20, 21, 22—  
UNCERTAIN GLORY, starring Errol Flynn and Paul Lukas.

## Sunday Services

Sunday, June 11, 1944

### UNITED PROTESTANT

Rev. Kenneth Bell Columbia High School  
9:45 a.m. Sunday School  
11:00 a.m. Sunday Service  
8:00 p.m. Church Service

### NATIONAL LUTHERAN SERVICES

Rev. Frank Carlson Lewis Grade School  
9:45 a.m. Sunday School  
11:00 a.m. Church Service

### EPISCOPAL CHURCH

Rev. Leo Dyson United Church Bldg.  
8:00 p.m. Church Service  
Monday, June 12

### CATHOLIC SERVICE

Rev. W. J. Sweeney Grange Hall  
Sat., June 10, 2 p.m. Children's Class  
Sun., June 11, 7:00 and 11:30 Mass

### LATTER DAY SAINTS

James Thompson, Pres. United Church (128-X)

9:30 a.m. Priesthood meeting  
10:30 a.m. Sunday School  
6:30 p.m. Sacramental meeting

### LUTHERAN (Missouri Synod)

Rev. M. C. Kauth Lewis Grade School (Room 116)  
9:00 a.m. Church Service

## Sings Hymns Tonight

Members of the Church of Christ have invited those interested to join their singing school tonight at 8 o'clock in Room 9 of the Grammar School building.

"The Last Word," says a spring frock advertisement. That's what the women want.

# HOW MANY SAFETY HAZARDS CAN YOU FIND HERE?

## Send List For Picture 8 To Central Safety Office

Are you good at spotting hazards?

If you are, maybe you'll be a winner of one of the 21 valuable prizes in this 10-week picture-puzzle.

Read about it on page 1 of this issue of the paper . . . then study the rules below:

### CONTEST RULES

1. All field workmen (including sub-contractors) below the rank of foreman are eligible to enter. Office workers are not eligible.

2. This is the 8th picture-puzzle in the series of ten. To compete for the prizes, you must submit an entry each week during the contest.

If you have missed any issues you can catch up by obtaining the previous picture-puzzles from your foreman.

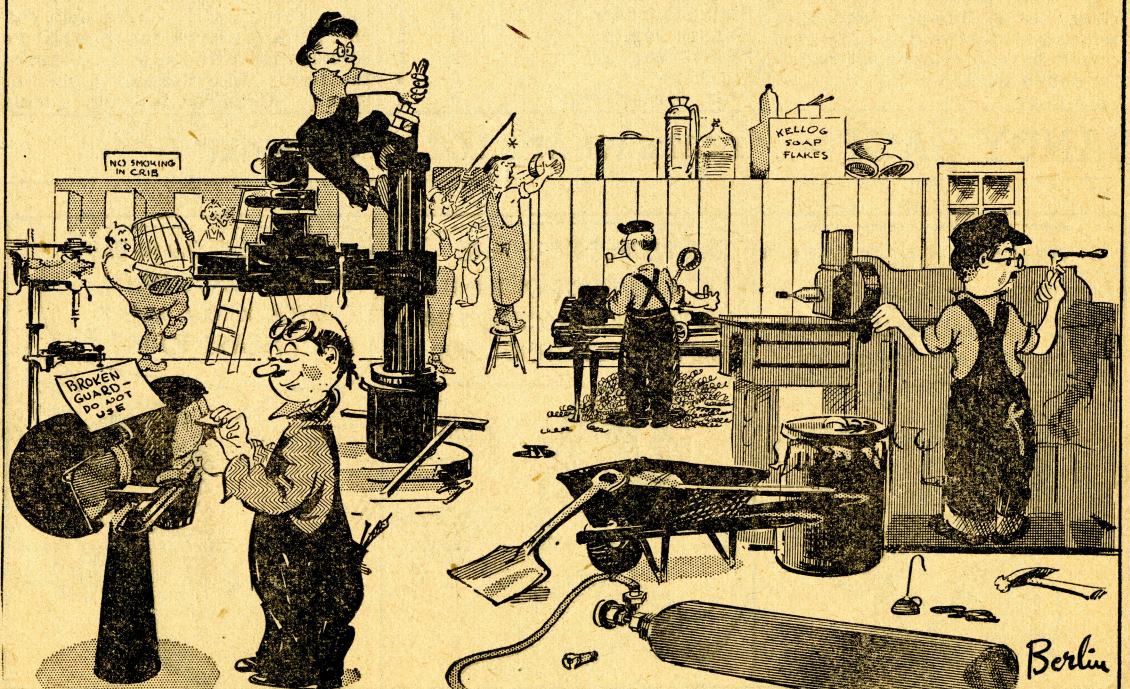
3. The awarding of prizes will be based on the largest number of safety hazards found in the puzzles. (Exaggerated hazards will count against you—make yours practical).

4. Place your name, address, payroll number, craft and picture number (this is number 8) in the upper right hand corner of a sheet of paper for your entry.

5. Mail your entry to the central Safety Office in the Hanford Administration Building.

6. Decision of the judges is final.

## PICTURE # 8





# SPORTS PARADE

'Hey, Didn't You See That One, Ump?'



## Bluejay's Manager Looks to Competition

### Baseball League Standings

	W	L	Pct.
Hanford Eagles*	2	0	.1000
Crane & Rigging	2	1	.667
Transportation	2	1	.667
Utilities†	1	1	.500
Carpenters†	0	2	.000
Blue Jays*	0	2	.000

\* Tie game to be replayed June 17.

† Game called because of weather. Replayed June 14.

### Softball vs. Wind

Last week the wind again played havoc with Hanford's softball teams—only the Monday league was able to play out its schedule.

The Mechanical Department continues to stay on top in the Monday League. This team is undefeated to date and with Pitcher Scoggins running up a fine strike-out record, it appears the Mechanics will be hard to stop.

Four other teams, Olympic, Time Office, Stump Jumpers and Electricians are all strong and Mechanical will have to play good ball to stay out in front.

Introducing Tim O'Leary, "fireball" manager of the Hanford Bluejays, one of the two Labor Department teams in the Hanford Sunday Baseball League.

Tim is from Louisville and he started playing semi-pro ball in that famous Derby City over twenty years ago. Pitcher and first baseman by trade, Tim had a brief stay with Gulfport in the Cotton States League and later managed several teams in and around Louisville. Two of his teams played in the semi-pro World Series.

Asked to make a few comments regarding his team's chances in the league, Tim refused to make any predictions but stated that his boys would be in there scrapping for nine innings in every game.

In a few more weeks he expects to see some very high class

### Standings of the Monday League:

	W.	L.
Mechanical	4	0
Olympic	3	1
Time Office	2	1
Stump Jumpers	2	1
Hankee James	2	2
Electricians	2	2
Butchers	0	4
Crane Department	0	4

## Eagles Bag Hard-Fought Game To Clinch First League Place

The Hanford Eagles defeated Transportation 5 to 2 last Sunday and moved into undisputed first place in the Hanford Baseball League.

The game was hard fought from start to finish—especially the finish. Transportation threw away several fine chances to win the game by committing 8 errors and being guilty of some very bad base running. The Eagles were out hit 8 to 4 but all their hits were timely and accounted for runs. The entire team played "heads-up" ball and gave Pitcher Gilmore good support—at times making brilliant plays. One in particular drew a swell hand from the spectators—Outfielder Jim Holmes made a perfect throw from deep right field to catch a runner at home and prevent two sure runs. It was the kind of a play you would expect to see only in a place like Yankee Stadium.

Pitcher Pollard for Transportation pitched his heart out, striking out 12 men, but his efforts were wasted by teammates who folded up when the going got tough.

Marty Tomazin pitched Crane & Rigging to a 14 to 0 victory over the Hanford Bluejays. Marty allowed only 5 scattered hits and struck out

13. The game was closer than the score indicates until the 7th inning when the Riggers blasted Pitcher Lawrence for 7 runs including homers by Danny Welock and Tomazin. The Riggers made 14 hits and played excellent ball afieid.

The last game of the day between Carpenters and Utilities was called at the end of the 2nd inning because of a sand storm and will be played at a later date. The Carpenters, with an entirely new team, were leading 5 to 4 when the game was called.

The 9th inning of the protested game between the Bluejays and Eagles was played off last Sunday and resulted in a tie game. The two teams will replay the game Saturday, June 17 at the Practice Field, game time, 6:30 p.m.

Next Sunday, June 18, Crane and Rigging will tangle with the Hanford Eagles at 1:30 p.m. in what should be the best game of the day. Manager Welock will probably use Tomazin in an effort to stop the tough Eagles.

At 10:00 a.m. the Bluejays will meet Utilities and at 4:30 p.m. the Carpenters will be after their first win when they take on Transportation.

## CASUAL COMMENT

By Proxy

The Midwest's great collegiate conference, the Western Conference, literally has become the Big Nine rather than the Big Ten as it has been popularly known. University of Chicago, which dropped foot-

ball. Tim went on to say: "This baseball is doing more for the morale of the camp than anything else; this is quite evident by the increasing interest and enthusiasm shown by both players and spectators."

Tim has a fine looking squad—and some of the boys he is depending on right now are: Floyd Lawrence, right hander and mainstay of his pitching staff; Bob Sackett, catcher; Bill Mathews, infielder; Dave Applegate, outfielder and captain of the team; Tom Sellers, pitcher or infield; Chief Whitewater, young

ball several years ago, now has dropped all competitive sports.

Big Nine officials did not quibble with the decision. Maroon teams, once powerful under the long regime of A. A. Stagg, had become a troublesome "soft spot" on the circuit. Chicago's basketball team had not won a game in years. Baseball was little better. Rarely did a Chicago trackman gain a point.

President Hutchins, whose academic experiments on the Midway are arousing controversy both within and without the University of Chicago, now will have another controversy on his hands. His lack of enthusiasm for competitive sports is blamed largely for Chicago's failures.

outfielder, one of the fastest men in the league; Joe Cook, infielder; Hank Hull, power hitter who will play in the outfield; Bob Peck, infielder, and steady influence for the whole team; Bob Larkin, outfielder playing his first year in baseball. Tim thinks this boy has real possibilities.

## SANDY SAGE— "THAT'S WHAT A LOT OF US THINK!"

