

The Sage Sentinel

Published Weekly by H.E.W. Employees Association. Not To Be Mailed or Taken From the Area.

VOL. 1, NO. 51

FRIDAY, NOVEMBER 24, 1944

RICHLAND, WASHINGTON

Tax Deadline On January 15

January 15 marks the final deadline for filing returns of income taxes for the current year, a change from the previously announced deadline of December 15, it was announced this week.

The new date will make it possible for H.E.W. employees and other wage earners to make complete returns for the 1944 tax year, the new tax law pointed out.

The Employee Relations Section plans to render assistance to all employees needing help in computing taxes payable shortly after Christmas.

The Bureau of Internal Revenue requires that every single person with an income of \$2700 or more and every married couple with a total income of \$3500 or more, must file an estimate by January 15 and pay whatever amount is owed over and above the taxes that have been withheld during the year.

**BUY EXTRA
WAR BONDS**

Sixth War Loan Drive Off to Strong Start in First Week

Traffic Care Safety Rule

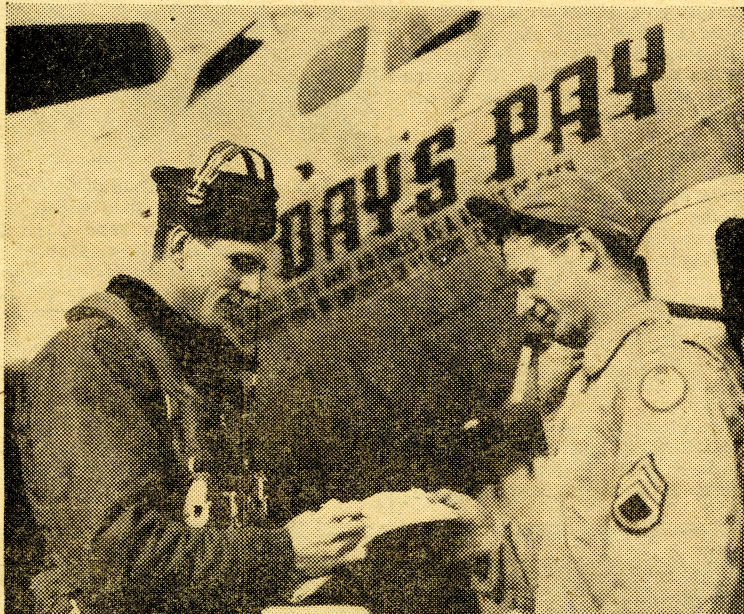
Concern for traffic hazards caused by winter weather conditions prompted Safety to bear down this week on the principal points to be observed in preventing accidents on the road.

Among the important traffic safety items, they pointed out, were: leave home from 20 or 30 minutes earlier than you do in summer; clean your windshield and all windows of dew and frost before starting to drive; use good judgment in your driving speed, and keep two windows open at least a crack to avoid possibility of concentration of carbon monoxide gas in vehicle.

For pedestrians, these considerations were suggested for watching: frost or ice on running boards and steps; wet and icy sidewalks; always cross at designated crossings, and avoid walking in front of or around busses.

For everyday care, Safety reminded motorists that failure to give proper hand signals is a frequent accident cause. The three main points to be observed in automobile driving are: hand straight out for left turn, down for stop and up at right angle for right turn.

'DAY'S PAY' in England



The above picture of the pilot and ground crew chief of Hanford's own DAY'S PAY was made in England, Eighth Air Force base of the plane, and accompanied the good news story that reached Hanford last week stating that the big bomber has completed more than fifteen attacks on Nazi targets. 1st Lt. Arlys Wineinger (at the left) 24, Tribune, Kan., is the pilot; S/Sgt. Salvadore Leto, 22, crew chief, is from New York, N. Y.

Give 'DAY'S PAY' Crew Names For Mailing Christmas Cards

Rule That Christmas Trees Be Fireproofed

Village authorities have ruled that all Christmas trees used in Village homes must be fireproofed. When purchasing trees, residents should make certain that the vendor has a certificate from the Fire Protection Division stating that trees have been fireproofed.

Issue Call for "Sub" Teachers in Richland

R. H. Fergin, Superintendent of Schools, has issued a call to Richland women who have had school teaching experience to serve as substitute teachers in the Richland grade schools and in the Columbia High School.

Persons who can serve in this capacity should call Mr. Fergin at R-388.

That DAY'S PAY, with the Eighth Air Force based in England, is paying big dividends in successful bombing missions against Nazi targets was the news carried last week in The Sage Sentinel "extra" issued early Thursday morning.

Since the news of "our bomber" and its missions in support of Allied ground forces as well as its bombing missions against Nazi war industries deep in Germany, H.E.W. employees have shouted "more." Certain of the tie that binds the workers to the crew of DAY'S PAY, The Sage Sentinel has secured a complete list of names of her combat and ground crew members. This because so many DAY'S PAY contributors have expressed the wish to write at least a Christmas note to "our boys."

Letters may be sent of course to any individual member or to the entire crew, but until the proper A.P.O. number is received, The Sage Sentinel will act as a clearing house and forward all mail intended for the crew's personnel.

First Lieutenant Arlys Wineinger, 24, of Tribune, Kan., is pilot of the bomber, and says of DAY'S PAY, "She is a top flying plane, and she's surely paying for herself."

Staff Sergeant Salvadore Leto, of New York, N. Y., ground crew chief of the plane, reports: "So far flak has knocked out an engine, a gas tank, and the nose, but DAY'S PAY always comes back."

The regular combat crew of DAY'S PAY, in addition to Pilot Wineinger, is: 1st Lt. Robert M. Neal, 25, co-pilot, Junction, Texas; 2nd Lt. Seymour Deutsch, 23, navigator, Brooklyn, N.Y.; 2nd Lt. Frank E. McCann, 22, bombardier, Newark, N.J.; T/Sgt. Rudolph E. Krack, 22, engineer and gunner, Garfield, N.J.; T/Sgt. Allen N. Cohen, 23, radio operator and gunner, Philadelphia, Pa.; S/Sgt. Charles A. Purcell, 23, ball turret gunner, Laurinsburg, N. Car.; S/Sgt. Edwin A. Stewart, 22, waist gunner, Pensacola, Fla.; S/Sgt. Chester W. Piergies, 22, tail gunner, Lorain, Ohio.

The ground crew men, headed by Staff Sergeant Leto, are: Sgt. Lawrence Eighner, 23, assistant crew chief, Watseka, Ill., and Cpl. Michael Spear, 32, aviation mechanic, Bronx, N.Y.

Among the more than fifteen missions carried out by the crews of DAY'S PAY have been: direct support to our ground forces on the Continent, blasting gun emplacements outside Rotterdam to aid the Allied airborne invasion of Holland, and twice participating in attacks on marshalling yards at Cologne to cut off Nazi supplies from Aachen.

The Tiger tank factories at Kassel the I. G. Farben chemical works at Ludwigshaven, an ordnance depot at Dusseldorf, oil refineries at Hamburg, are a few of the Eighth Air Force targets that DAY'S PAY has attacked.

Village Makes Holiday Plans —Appoints Xmas Committees

Plans for a community Christmas program in Richland were discussed and set in motion at a dinner meeting held on Thursday, November 16, at the Transient Quarters. The meeting, called by the Richland Village Players, was attended by leaders of Richland civic, church, and social groups.

A general outline of Village-wide festivities for Christmas week was agreed upon, including individual and group presentations by the various Village organizations, climaxed by a huge early evening community program on Saturday, December 23.

John P. Gorman of the Village Activities Division was elected chairman of an executive committee to put the plans in operation, with Mrs. H. O. James, of the Richland Village Players, as his assistant and technical adviser. Others on the executive committee selected by the group are: H. Pfutzenreuter, representative of the Co-ordinate Club, chairman of the Decoration Committee; W. S. Roe, Jr., of the Junior Chamber of Commerce, chairman of the Finance Committee; J. P. O'Hara, representing the Richland Meistersingers, a choral group, chairman of the Program Committee, with Mrs. M. H. Smith, of the Camp Fire Girls, as

East and West; Wednesdays—100D, 300 and Central Shops; Thursdays—Hanford, White Bluffs and Richland; Fridays—100F, 200 East and West, and Saturdays—100D, 300 and Central Shops.

his assistant; and Paul Nissen, Richland Village Players, chairman of the Publicity Committee.

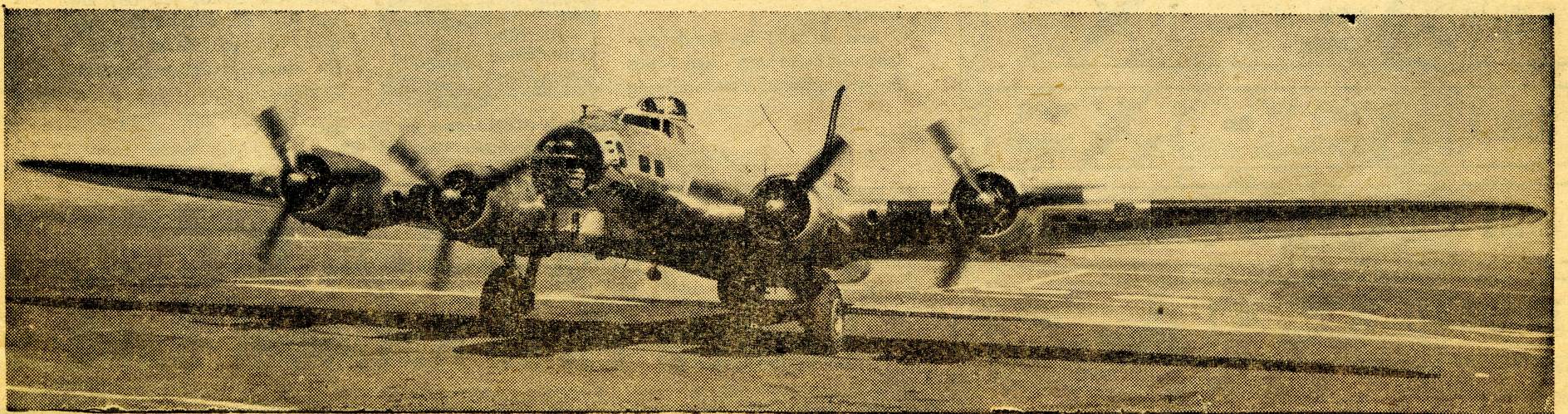
Among those present at the meeting, in addition to the foregoing, were: Rev. Kenneth Bell, United Protestant Church; Mrs. Max R. Crosby, Eastern Star; Mrs. J. P. Gorman, Girl Scouts; Capt. M. K. Barrett, Junior Chamber of Commerce; Joe Millard, Masonic Order; R. J. Pederson, Jefferson PTA; James Thompson, Church of Latter Day Saints; R. H. Fergin, superintendent of schools; O. Henningsen, Columbia High School PTA; Mrs. Franklin T. Matthias, American Red Cross; Mrs. James H. Peterson, Lewis and Clark PTA; Bert Arndt, Engineers Club; Miss Anne Connolly, music teacher, Lewis grade school; Mrs. A. I. Moore, Jefferson PTA; Mrs. Langford Spencer, Red Cross; and O. D. Cash, Masonic Order.

Preliminary plans, discussed at this meeting and at a meeting of the executive committee on Saturday, November 18, include such events as choral group singing of Christmas carols in the Village streets; community singing of carols; a central Christmas tree celebration, with a Santa Claus; and an opportunity for villagers to make a gift to less fortunate persons in war-torn countries.

A Tag Committee is also being formed under the chairmanship of O. D. Cash.

Additional details of the program will be announced when committee plans are completed.

'DAY'S PAY'—Gift from H.E.W. Employees to the Army Air Forces— As She Looked at Hanford Airport



The Sage Sentinel

Editor Helen D. Wiederrecht

Vol. 1, No. 51

Friday, November 24, 1944

Editorial suggestions and contributions should be sent to the Editor, Training and Relations Building, handed to your foreman, supervisor or placed in suggestion boxes. Deadline for all copy is one week previous to publication. Phone Extension 8376.

Copyright, 1944 by Hanford Engineer Works. The information contained in this publication shall not be communicated to the public or press. Requests for permission to reprint any or all of the contents must be made in writing to the Management, Hanford Engineer Works, P.O. Box 429, Pasco, Washington.

Are You a True Sportsman?

There have been long lines at Anderson's in Richland since Wednesday last. Most of the people in those lines purchased 100 rounds of shotgun shells. One could not help but wonder if all those people were "sportsmen."

Because I have shells, a license, and engage in hunting doesn't make me a true sportsman. The real test is "am I fair and honorable while engaging in the sport?" I wonder how many of us think of ourselves as sportsmen without stopping to see if we pass the test.

If you can pass the following test you are a person worthy to be called a "Sportsman."

1. Have a valid license?
2. Treat every gun with the respect due a loaded gun?
3. Carry only an empty gun, except when in the field?
4. Never push the safety catch off until you see the game?
5. Never point a gun at anything you do not wish to shoot?
6. Never mix gunpowder and alcohol?
7. Never start shooting before the time?
8. Never shoot after hours?
9. Always obtain a farmer's permission to hunt on his land and cultivate his friendship?
10. Always refrain from acts of vandalism or violations of the law?

We all expect the fellow we meet in the field to be a sportsman. He has the same right to expect us not to shoot before hours and to pass up the hen pheasant in order that there may be more and better shooting next year. Let's be fair to the other fellow and honorable in ourselves. BE A SPORTSMAN.

BUY EXTRA WAR BONDS

WHAT YOUR \$100 BOND WILL BUY (ONE \$100 BOND COSTS \$75)

1	\$100 BOND	=	1	GARAND RIFLE
1	\$100 BOND	=	2	NAVY FRAGMENTATION BOMBS
1	\$100 BOND	=	26	LIFE PRESERVERS
20	\$100 BONDS	=	1	RUBBER COLLAPSIBLE BOAT
45	\$100 BONDS	=	1	ANTI-TANK GUN
1200	\$100 BONDS	=	1	LIGHT TANK (INCL. ARMAMENT)
2,000	\$100 BONDS	=	1	ARMY FIGHTER PLANE
6,000	\$100 BONDS	=	1	FLYING FORTRESS
93,300	\$100 BONDS	=	1	SUBMARINE
1,130,000	\$100 BONDS	=	1	35,000 TON BATTLESHIP

V-718

MEDIA DIVISION - OW

Plan Classes In Adult Study

Adult Education for residents of the Richland-Hanford area is now being organized under the direction of the Richland School District No. 400. It is expected that some classes will be started during December, but a survey of the interests in this field must be completed before a schedule of training can be announced.

It is planned that most of the courses will run for one night a week (two hours a night) for 18 weeks. A registration fee of \$2.00 will be charged in all courses, but instruction will be furnished by the School District and the only cost to students other than the registration fee will be for any texts or materials used by themselves in connection with the classes.

So that the people in charge of organizing this program may get an accurate picture of the sort of training desired among the residents of the community, the School District is requesting those interested to phone the War Production Training office at Hanford 8129, or the office of Superintendent of Schools R. H. Fergin at Richland 214 to give their names and specify the sort of training they would like to receive.

The following list shows courses in which some interest has already been indicated: Typing, Shorthand, Bookkeeping, General English, Music

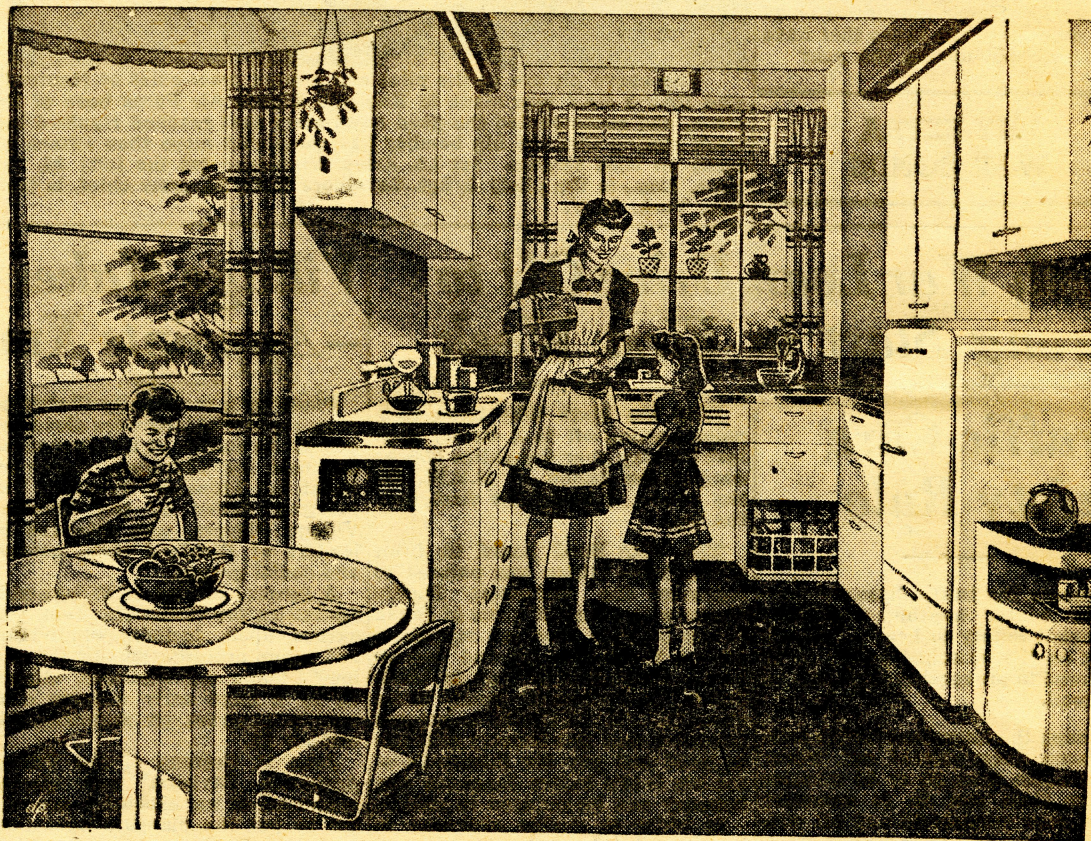


Andrew Wood's Caldwell (that apostrophe is correct) is a weekly bond-buyer at the Hanford Bank, but this week he's buying extra securities during the Sixth War Loan Drive that opened last Monday. A Carpenter from Glendine, Montana, he puts the savings in his son's name, a 17-year-old serviceman in the Aleutians. Lucille Chaney, Tulsa, Oklahoma, is the bond lady in the picture.

ic Appreciation, Free Hand Arts and Crafts, Northwest History, Geography and Natural Resources of Washington, Public Speaking, Conversational Spanish, Conversational French, Woodworking, Furniture Clinic, Landscape Gardening, and Clothing.

Write a Christmas letter to the boys who fly DAY'S PAY—H.E.W. employees own B-17 bomber in England.

Buy an extra bond this month in the Sixth War Loan Drive. November 20 to December 15.



This is the kitchen that War Bonds and Savings will build in 1954

Mrs. Robert Smith doesn't know it yet, but it will be hers a few short years from now. You see, Mrs. Smith has always wanted just such a kitchen. But with a young and growing family she has always found other ways to distribute the family income.

Mr. Smith is making good money now, and Mrs. Smith is seeing to it that the family buys their full share of War Bonds, because it's the right thing to do. Mrs. Smith, too, is setting aside a small amount regularly in the family bank account to take care of emergencies.

And in 1954 the family savings will build her kitchen. Seems funny to think of a kitchen being

built in a safe deposit vault and in a bank book, but that's where the best ones come from.

Isn't it a sound idea for you, too, to save today so you can spend sensibly and more profitably in the future? Determine the approximate cost of what you need. Then go a step further and plan your saving program ahead to the time when you want to buy. Work it out with pencil and paper. That's the way to plan your spending—to plan your saving.

The War Bonds you buy now and the bank account you build now will provide the dollars for more profitable peacetime spending.

PLAN YOUR SPENDING
FOR YOUR FAMILY
YOUR COUNTRY
-YOURSELF-
PLAN YOUR SAVING

Help the nation's efforts to keep your living costs DOWN, the buying power of your dollar UP.

This advertisement is approved by the Office of Economic Stabilization

Serving at H. E. W.
Seattle First National Bank

"I'll See H. E. W. Thru to Final Victory—Will You?" Is Pledge

With the slogan "I'll See H.E.W. Thru to Final Victory—Will You?" the Employees Victory Committee this week solicited signers through supervision to a pledge card and handed out "member" buttons in the Stay-on-the-Job campaign.

The program points up the necessity for staying at H.E.W. until each workman's particular construction job is finished—whether that date be soon or some time distant.

The card, with a place for signature, carries the promise: "I pledge to rededicate my efforts to final victory by staying at H.E.W. until my portion of the construction work is completed."

A spokesman for the campaign organization said this week: "If we are to finish this job on schedule, it will take the determined effort of each of us in our daily work to see it through. It's the finish of this race that counts, and that finish is up to the signers of this pledge in their promise to finish their own particular part of the job."

The wallet-sized pledge card and the button worn by its signers are reproduced below and in the adjoining column.



Labor Hits 3.9 In Presentees

Below the usual average but improved from the week before are the most recent presentee figures.

Eleven crafts improved their previous standings to bring the average to 6.7 per cent absentees, compared to 7.0 per cent last week.

Labor took top billing for the week, with only 3.9 per cent of their members off during the period. Second place went to Reinforcing Steel with 4.7 per cent, while Bricklayers and Carpenter Labor tied for third with 5.1 per cent.

Super Sales

Washington—The men and women who cook up the war bond drives have sold themselves their own bill of goods.

Employees of the Treasury Department's War Finance Division jumped the gun on the Sixth War Loan Drive. The drive didn't open until last Monday, but they already had over-subscribed their quota by 204 per cent.

RICHLAND THEATRE

Saturday, Nov. 25
"RIDERS OF THE DEADLINE"
Hop Along Cassidy

Sun.-Mon., Nov. 26-27
"HEAVENLY DAYS"
Fibber McGee and Molly

Tues.-Wed.-Thurs.
Nov. 28-29-30
"I LOVE A SOLDIER"
Paulette Goddard
and
Sunny Tufts

N.A.S. Band at Hanford Sun.

Continuing the new Sunday afternoon programs, the Pasco Naval Air Station Band will play at the Hanford Auditorium this coming Sunday at 3:30 p.m.

The twenty-piece N.A.S. Band will present a concert including both popular and classical numbers. Both amateur and former professional musicians are included in the group.

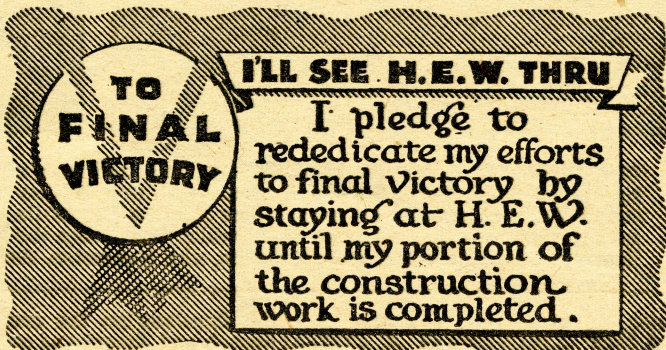
An operetta and colored pictures of scenic spots in Washington will carry the entertainments into December.

H.E.W. Band in Village Concert

In addition to the usual Monday night concert in Hanford, the H.E.W. Band will travel to Richland for a program Thursday. To feature a vocalist in light classic numbers, the group will finish the program playing several overtures and patriotic marches. This will be the Hanford Band's second appearance before a Richland audience.

All lovers of band music are invited to these free concerts which are sponsored by the H.E.W. Employees' Association. They are scheduled to begin at 8:30, Monday, in the Hanford auditorium, and Thursday, November 20, at the Columbia High School auditorium.

Sign a pledge and wear a button—"I'll See H.E.W. Thru to Final Victory—Will You?"



NAME _____

FINE JEWELRY

Our DIAMOND and WATCH department has a most complete line of FINE JEWELRY and new shipments are arriving daily.

DIAMONDS	from \$32.50 to \$1250.00
LADIES' Rings	8.00 to 150.00
MEN'S RINGS	12.50 to 275.00

A shipment of Masonic, 32nd degree, Elks, and K. C. rings just received.

IDENTIFICATION BRACELETS	7.50 to 75.00
LOCKETS	5.00 to 40.00
PENDANTS	5.00 to 75.00
ANKLETS	1.50 to 8.00
BRACELETS	10.00 to 75.00
CROSSES	3.00 to 25.00
CHARMS	1.25 to 12.00
BABY RINGS	1.50 to 10.00
BABY LOCKETS	3.00 to 8.00
BABY BRACELETS	2.50 to 5.00
WATCH BANDS	
Men's	1.00 to 12.50
Ladies'	2.50 to 25.00

Make Your Selections NOW While Our Stocks Are Complete.

We do watch, clock and jewelry repairing
Diamond and Watch Department

C. C. ANDERSON CO.

RICHLAND, WASHINGTON

Weems-King Band Futures

Two top-flight bands are scheduled to entertain Hanford jive fans during December.

Opening the month's program, Ted Weems will make music at the local Auditorium Friday and Saturday, December 1 and 2. Weems has recently reorganized his band after receiving an honorable discharge from the U. S. Maritime Service. He is to give a repeat performance at Hanford two weeks later, December 15 and 16.

The orchestra of Henry King is listed for the holiday weekends, December 22-23 and 29-30. He brings his musicians from Hollywood, where they have just completed several film shorts.

Music by Lindy, Hanford's own, will feature this weekend's dances, as well as those of December 8 and 9 and all of the regular Wednesday night dances. The Auditorium is the place, and hours are from 9:00 p.m. to 1:00 a.m. Admission is \$1.00 for men and 50 cents for women. The events are sponsored by the H.E.W. Employees Association.

Write to the boys who fly DAY'S PAY—the bomber bought through cash contributions of the employees of Hanford Engineer Works. Send your letter or card to The Sage Sentinel—and it will be forwarded.

Flu Is Tougher—P.H.D. Warns

From the Public Health Section comes the timely admonition: "But FLU is tougher" in a "Get medical care early" release. But the entire broadside goes:

"But FLU is tougher—than just an ordinary cold. It knocks its victim down and drags him out—to the point where he is susceptible to other respiratory infections of a second attack of the flu.

"BE CAREFUL OF WHAT SEEMS TO BE 'JUST A BAD COLD'—it may be the flu. Although the flu and a cold are caught in the same manner (breathing in the viruses released by coughs and sneezes), they are two different diseases caused by different viruses. However, they both begin with the same symptoms."

Particular care, Public Health said, should be given to the "cold" that hangs on, brings on a fever causes all-over aches and tires its victim out. It may be the flu.

There is no "sure cure" for flu (influenza), but the dangers of serious complications (such as pneumonia) and of infecting others can be avoided by: (1) Going to bed (2) Getting medical care early. (3) Following the doctor's orders. (4) Keeping other people away.

Winter weather is here. Check yourself and your car for safety in driving. Watch hand signals.

CASTLEBERRYS Super-Cut-Rate-Drug

708 Symons Street Richland, Wash.

the drug center

Weekday Store Hours
9 A. M. to 10:30 P. M.

Sunday Store Hours
9 A. M. to 10:30 P. M.

MEN'S
FITTED CASES
from 3.50 to 32.50

LADIES'
COMPACTS
from 1.50 to 6.50

Best Buy
WAR BONDS

Best Buy
WAR BONDS

FOR COLDS

FOR COUGHS

35c Groves Cold Tablets 27c	55c Pinex 54c
60c Darol Cold Tablets 49c	4 oz. Respalol 47c
50c Zerbets Capsules 43c	60c Kings New Discovery 49c
Pentro Inhaler 25c	35c Pisos 29c
75c Vicks Vapo Rub 59c	1.25 Creomulsion 1.12
50c Minit Rub 43c	85c Buckleys 79c
75c Ben Gay 59c	8 oz. Darol 69c

60c
KREML
SHAMPOO
49c

60c
ALKA-SELTZER
49c

TOOTH
BRUSHES
2 for 51c
TEK

50 c.c. Parke-Davis Natola	\$2.39
50 c.c. Squibb Navitol	\$2.67
10 c.c. Super D Concentr.	\$1.38
50 cc Oleum Percomorph.	\$2.67
Pint Vi-Delta Emulsion	\$1.69
1-lb. Squibb Navitol Malt	\$1.69
Pint Super D Cod Liver Oil	\$1.39

MEN'S
BILLFOLDS
from
1.50 to 12.95

50c Mennen Skin Balm	39c
75c Mollie Shave Cream	69c
50c Barbasol	39c
85c Burma Shave	69c
35c Ingrams	29c

LADIES'
BILLFOLDS
from
1.00 to 7.50

THE WORLD AT WAR

The Western Front

In previous reports we have discussed the attempt which General Eisenhower made last summer to execute an end run around the right flank of the German western front. It was a gallant effort to end the European War quickly by getting into the Reich easily and cheaply. It failed when the British paratroopers had to give up their precarious hold on a quarter mile of the north bank of the Rhine after nine days of the most valiant fighting in history. With that setback, our strategists had to make up their minds whether to seek another possible soft spot or to take the time to accumulate an overwhelming amount of men and weapons for a direct power drive at the West Wall. Evidently the latter alternative was decided on, for last week the whole 400 miles of the Western Front blazed into one of the most tremendous battles in history. The heat was on the Nazis as it never has been before.

The whereabouts of the American Ninth Army was disclosed when dispatches came from the Cologne sector telling of a drive by the First and Ninth armies. The pincers which Patton's Third Army had started the week before to envelope Metz kept on squeezing until Nazi resistance suddenly collapsed last

Monday—so suddenly that the German Elite Guard commander was captured without a shot being fired. Farther south the Sixth Army group composed of the French First and American Seventh armies plunged through the 28 mile Belfort Gap to the German Rhine. At last reports from Switzerland they were losing no time in putting pontoon bridges across the river.

Far to the north the American First and British Armies drove hard from Holland to cross the border of the Reich near Venlo. All along the front the enemy seemed to be unable to shift reserves to withstand such terrific pressure from every quarter. As the week ended it looked as though the Nazis would have to retire to the right bank of the Rhine to make their next strong stand at the inner wall of the Siegfried Line. Anything can happen between now and Christmas.

The Italian Front

The same old enemy—rain, sleet, snow, mud and cold, and the Germans, kept gains to a minimum. Berlin, however, predicts a strong drive on Bologna soon, and Nazi predictions of that sort of thing have been remarkably psychic of late.

No Cigaretts in Any Language—Except Jap



Mrs. Chester D. Kozuchowski of Chicago, left, embraces an armful of Japanese cigarettes, sent to her by her husband, Corp. Chester Kozuchowski, and if they prove smokable, her worries about the smoke shortage are over for some weeks to come. But Willa Hepler, Washington, Ill., finds no cigarettes in any language in a Chicago store which advertises the lack in English, German, Yiddish, French, Russian, Portuguese and Italian, Greek, and Bohemian. And the same applies if you speak Icelandic.



NOTICE CAR OWNERS LARGE STOCK GRADE I TIRES

Just Arrived
SEE US TODAY

also

BATTERIES	ANTI FREEZE
COMPLETE STOCKS	Bulk and in Gallon Jugs
of	
AUTOMOTIVE PARTS	RADIATOR SOLDER
MEN'S CLOTHING	RADIATOR CLEANER

FIRESTONE STORE SALES and SERVICE

Located

TWO BLOCKS NORTH OF ADMINISTRATION BLDG.
ON AVENUE A

Phone 8526

**ALL B AND C BOOK HOLDERS
ARE NOW ELIGIBLE FOR
NEW TIRES**



Come in and get the facts
about the new O.P.A. Tire
Rationing Regulations. We
are Tire Headquarters.

Buy the Tire that
Stays Safer, Longer

**Firestone
DELUXE
CHAMPION**

Built of American-
Made Rubber

6.00-16 **16.05** Plus tax
Grade I Tire Certificate Needed

The Eastern Front

The Russians continued their pincer movement against Budapest with steady success. There is no question that the Nazis are fighting desperately, even fanatically to stave off a collapse in this sector and the Italian front. When the collapse comes on those two fronts, as it inevitably must come under the strong pressure applied continuously by the Allies, a large portion of the German Army and its equipment will be in a very precarious position. A lightning drive by the Reds through western Yugoslavia could outflank the German Army in northern Italy. When Budapest falls the road will be open into Austria and a direct pincer movement in southern Germany by

the Russians on the east and the French and Americans on the west. As we remarked before, the heat is on the Germans so strongly now that anything can happen at any time. The last six weeks of 1944 may well be the crisis in the European war.

The Burma- Chinese Front

The Burma end of this front is getting better. Chinese troops following American dive-bomber strafing, have penetrated sixty-odd miles into Burma to take a Japanese stronghold there. Other Chinese troops have recaptured their third Burma Road town inside China in

as many weeks. But these are minor victories. The road from Burma into China is still a long, tortuous one, and most of it is still in enemy hands.

In China itself the Japs are still winning. Even the Chinese high command now admits that the Nips have taken and are consolidating a complete land route from Hong Kong through to Manchuria. Such a route will not replace the sea lanes which repossession of the Philippines will lose for Japan, but it will help a lot to keep a stream of essential supplies flowing from China into the Japanese homeland and Jap-occupied China.

The Pacific Front

Nothing very spectacular can be expected from the Philippines until MacArthur has completed the tedious process of wiping out the reinforced Japs from the jungles and hillside caves from which they fight so murderously and so savagely. No doubt the General could rush the end of the enemy on Leyte by disregarding the cost in American lives, but he is not doing that more than Eisenhower is in Europe. So the only alternative is superior air power, steady relentless pressure at every possible point, and cool crafty jungle fighting of the

Ross Music Shop

RECORDS, SHEET MUSIC AND
MUSICAL INSTRUMENT ACCESSORIES

REMEMBER—RECORDS ARE THE IDEAL
CHRISTMAS GIFT

Hours—10 A.M.-9:30 P.M.

Balcony — Hogan Drug

In Pasco



Eura's Beauty Salon

COLD WAVE
OUR SPECIALTY

HAIR STYLING

HAIR CUTTING

BONNE BELL COSMETICS

FREE FACIALS BY SKIN SPECIALISTS

Come in, or Call 8271 for Appointments

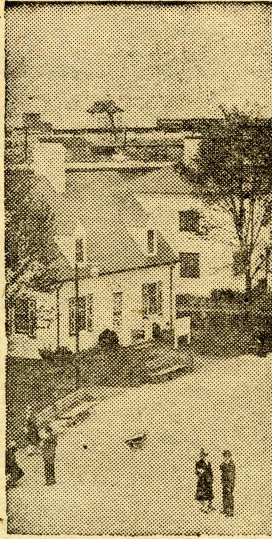
Heads Leyte Japs



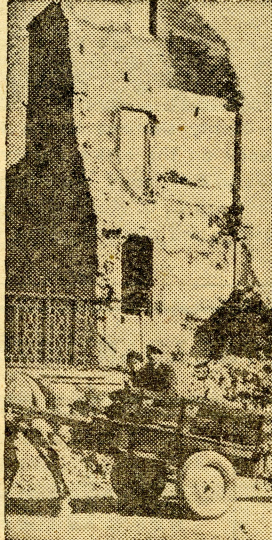
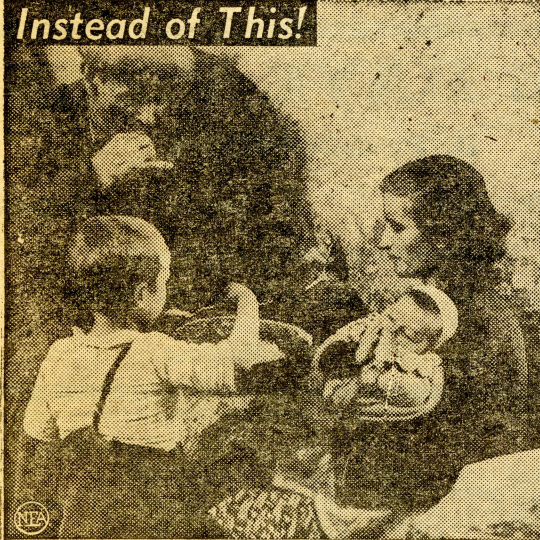
Lt.-Gen. Shiro Makino, above, commands Japanese opposing the American forces on Leyte Island, in the Philippines. He is believed to head the infamous 16th Division, which General MacArthur said "did the dirty work on Bataan."

BE THANKFUL . . .

That You Have This--



Instead of This!



type our boys have learned so well that they take eleven Jap lives for every one we lose.

The narrow strip of the west coast of Leyte still held by the Jap is being chiselled down steadily by the Macmen. Last week they set up a road block on the Ormoc Road which held up in the face of several fierce Jap counter-attacks. Some 3,000 Japs were cut off by the block and were steadily being decimated with little hope of reinforcement or escape. After the disastrous ship losses of the preceding week the enemy has made little effort to send further reinforcements to Leyte, with the possible exception of a few small craft under the cover of the night. Our airmen sharpshooters got several of those last week.

The Strategic Air War

Nothing out of the ordinary happened in the stratosphere last week. But the ordinary these days means incessant pounding of innumerable objectives from the northernmost islands of Japan to the southern tip of Burma and from Norway to Italy. It takes something extremely spectacular nowadays to raise us from our chairs, but the day in and day out pounding our enemies get from the skies is helping to speed final victory more than we realize. The Germans are attempting spectacular aerial stuff with the new V-2 rocket, but so far without any marked success. Spectacles make good headlines but do not necessarily win wars.

The Overall Picture

The strained relations between the Chinese and American governments which resulted in the recall of General Stilwell and the resignation of Ambassador Gauss may have cleared the air to some extent. At any rate, there has been a severe shakeup in the Chinese cabinet, and it appears that the Soong family is losing its strong hold on Nationalist China. Whether that is good or bad remains to be seen, but it is hard to see how the Chinese situation can get much worse than it has been in recent weeks. It may get worse before it gets better, for Japan has a stranglehold on a large portion of the Chinese mainland now, and everything we send them still has to be flown over the hump.

Germany is still seething with unrest, rumour and suspicion. Berlin is still saying that Hitler is in splendid health and isn't really crazy—honest! Himmler seems to be the head man, at least for the present. His Gestapo has under-

taken the job of Nazifying the German Army. That's quite a job, for the German Army never saw eye to eye with the Nazi higher-ups about a number of things, notably the idea of attacking Russia. It was well satisfied to take the smaller countries, the pushovers, and live off the fat of their lands. That mad Nazi ambition to rule the world got the German Army into quite a lot of trouble.

In spite of the American miracle of production, our armed forces are still short of a lot of essentials. General Eisenhower says that the current drive on the Western Front is using ammunition scheduled for early 1945. That has got to be made up in a hurry. Our new weapons such as the rockets we're now turning out by the thousands have got to be speeded up to the hundreds of thousands. There is one hell of a lot of work to be done in this

U. S. A. before we win the final victory—and one hell of a lot of bonds to be bought. BUY EXTRA SIXTH WAR LOAN BONDS!

On Second Thought

by
Gordon Sutherland

That was a grand bit of news for us Hanfordians last week—that story of our DAY'S PAY which the Sage Sentinel gave us in a special one-sheet edition early one morning. The Air Force had promised last summer to send us periodic reports on the progress of our bomber in action. A lot of us had got to the stage where we were chafing, even griping, over the lack

of any definite word.

Of course those who did the most beefing just weren't figuring all the angles. The Air Forces have had a lot more important jobs to do in the past few months than to send us day-by-day wires on every mission our fortress undertook. It isn't that they lack appreciation of our pride in that beauty we gave them, or that they fail to understand how anxious we are to know what she's doing—it's just that the boys in England, France and Italy, as well as the boys in the Pacific theater of war, have been dogged busy pounding hell out of the enemy.

Well, we can be satisfied for a while now. We know not only some of the great work our DAY'S PAY has been doing, but we know who the pilot is who flies her and also the chief of the ground crew that keeps her flying. We even have a picture of those two in this Sage Sentinel. But we've got to face the fact that even now she may have gone the way of many other good fighting ships.

That bit that the crew chief said about her having had an engine, a gas tank and her nose knocked out already—that shows us that our baby hasn't been attending Sunday school picnics. Maybe they are sparing our feelings by not telling us everything, but anyone who knows a little about military planes knows that it would be a miracle to have that much damage without someone being hurt. No use kidding ourselves—we dug down in our pockets to give DAY'S PAY to our country and we're proud that there were enough of us to do it—but those boys who are taking our bomber out on those missions over enemy territory are the ones who

are doing the real job of taking it on the chin and coming up for more. They deserve a million times more credit than we do.

And that report gives us something else to think about too. It takes a lot of money to keep our bomber going and there are thousands like her, plus new thousands of her big sister, the B-29 Superfortress which all our top generals say we need so many of. It's going to cost our country plenty to finish this war up to complete victory—it's not over yet by a long shot. That's why we've got a Sixth War Loan right now to the tune of fourteen billion dollars. Here at H.E.W. our quota is only \$600,000 extra War Savings Bonds. The best Christmas present I can think of to those boys of ours who are flying our bomber is a cablegram to them along about December 16th, something like this, "H.E.W. quota Sixth War Loan six hundred thousand. We bought one million. Merry Christmas and God bless you."

Come on, H.E.W.! Let's do the job up right the way we always have done. Let's take the million in extra bonds and then ask Colonel Matthias to send the cablegram to our boys with DAY'S PAY!

Is the War Over?

New York—The nearest distances to Berlin from advanced Allied lines today:

Western Front—296 miles (from point near Nijmegen. Unchanged).

Eastern Front—315 miles (from Warsaw. Unchanged).

Italy—533 miles (from point south of Ravenna. Unchanged).

SAFETY PAYS

WATCH REPAIRING ENGRAVING

WEISFIELD & GOLDBERG
JEWELERS

Main Shopping Center — Hanford

Want to Sell Your Car

? ? ? ?

S & J Motor Co.

Authorized



Sales and Service

KENNEWICK, WASH.

Telephone 1321

SEE US TODAY!

- We Pay Top Prices
- No Delays
- We will buy your equity and pay off your contract.

Used car lot open evenings and Sunday
for convenience of defense workers.



as featured in
VOGUE

For spirited young figures: Brush-strokes in braid

point up the slim lines of this fitted coat by **ETTA GAYNES**.

Lovingly tailored in "DUVBLOOM," a 100% wool fabric by

AMERICAN WOOLEN CO. Quality rayon lined with **EARL-GLO**.

The Style Center

RICHLAND, WASHINGTON

"The Latest Styles at Thrifty Prices"

Office Safety At Half Mark

Out front with eight emblems each are three departments this week in the Office Safety Contest. The top-notchers are Richland Office Engineering, Engineering Services and Investigation.

Pushing to the fore are five other offices, Feeding Facilities of Hanford Housing, Concrete, Methods and Procedures, Public Health and Multitith.

Other offices have all earned six emblems each for the Office Safety Flag, which, the Office Safety Supervisor announced, puts each department "over the top" in the fourth week of the contest and qualifies the supervisor to receive the Recognition Safety Award.

"But," Safety warned, "these supervision awards will be given 'on probation' until the end of the contest January 1, for any office that slips may still find itself with 'minus' emblems."

With five more weeks left in the contest, Safety complimented all offices on their participation in the contest and urged continued Safety suggestions from the groups.

It's the finish that counts. Stay on the job and wear your pledge button to see it through.

Safety Leaders



Standing high in the Office Safety Contest is the Public Health Department. Emblems for the week on the office Safety Flag are being put on by Lucille Brownell, Health Educator. And admiring the process and cheering from the sidelines are L. G. Koch, Sanitary Engineer; Virginia Secor, Department Secretary, and Janis Gerking, Supervisor of Public Health Nurses.

IN THE SIXTH WAR LOAN DRIVE

War Prisoner Messages-Cross

The Red Cross announces that special arrangements have been completed for Red Cross messages to be taken to the Philippines for delivery to liberated U. S. Prisoners of war and U. S. civilian internees. The Red Cross may accept one message from any person in this country to relatives and friends now held as U. S. Prisoners of War or U. S. Civilian internees known to be in the Philippines.

Messages must be in by November 30, and are restricted to 100 words. These messages are subject only to censorship regulation of ordinary Army overseas mail. Although the Red Cross cannot

guarantee delivery, every effort will be made to reach the addressees so that they may establish contact with their families as soon as possible after the Philippines are liberated. It is hoped that arrangements may be made for addressees to reply directly. Messages cannot be accepted for U. S. free civilian or Filipinos under this plan because of special government channels to be used for delivery of messages. Messages undeliverable after six months will be destroyed. Families are encouraged to continue writing by regular Prisoner of War mail.

Bonds are yours and for your security. Buy extra ones between now and December 15 in the Sixth War Loan Drive.

Cover coughs and sneezes—and help prevent diseases.

Safety Pays.

WE HAVE TIRES

B. F. GOODRICH

FREE INSPECTION

MOUNT & DEMOUNT

We have a complete stock of tires

See us for All Sizes of Tires and Tubes

BILL ENDICOTT, Manager



XMAS GIFTS

Only 25 Shopping Days

Come to the

HOLLYWOOD SHOPPE

HANFORD, WASHINGTON

To Make Your Selections

From Our Large and Gorgeous Stock

Lounging Brunch Coat Pajama Set

Quilted Satin Robes

Fine Cotton House Coat

Rayon House Coats

Gowns

All Wool (hand loomed) Scarfs

Slack Suits

Beautiful Hand Bags — Assorted Colors

Fur Cap and Mitten Sets

Costume Jewelry

Exclusively

at the

Hollywood Shoppe

HANFORD, WASH.

Richland Thrifty Drugs

Heart of the Shopping Center

Goethals and Knight

Phone 640



WHY PAY MORE?

- \$1.00 Kreml Hair Tonic . . . 79c
- 25c Anacin Tablets 19c
- 50c Tek Tooth Brush 29c
- 25c Carters Pills 19c
- 50c Barbasol 39c

BABY NEEDS

- 50c Pabulum 39c
- 75c Dextro-Malt 63c
- 1.25 S.M.A. 94c
- 1.25 Similac 98c
- 1.00 J & J Baby Oil 2/ . 1.69
- 50c J & J Talcum 39c
- 40c Castoria 29c
- 42c Hygeia-Nurser 29c
- 15c Castile Soap 10c

SHAMPOOS

- 50c Conti-Castile 39c
- 50c Admiracion 39c
- 50c Packers 39c
- 50c Fitches Oil 39c
- 50c Wildroot 39c
- 60c Kreml 49c
- 60c Mul Coconut Oil 47c

VITAMINS

- Oleum Percomorph . . . 67c
- Unicaps 100 2.96
- Vita Kaps, 100 2.96
- Vigran, 100 2.96
- Bexel, 100 1.98
- Vi Penta Drops 1.13
- Brewer's Yeast
- 250 Tabs 89c
- Squibbs Cod Liver Oil 98c

DENTIFRICES

- 50c Ipana 39c
- 50c Lyons 39c
- 25c Squibbs Powder 2/33c
- 50c Phillips 39c
- 50c Kolynos 39c
- 50c Pepsodent 39c
- 50c Calox 43c

Christmas Greeting Cards

Wrappings — Gift Dressings

Ribbon — Cord — Tree Decorations

SHOP EARLY

LOTS FOR SALE

For Trailers and Cabins

\$100.00 Each, \$25.00 Down
\$5.00 Per Week

On No. 3 Highway

ISLAND VIEW SUBDIVISION

KIMES and GARST, Proprietors

WILLIAM WILSON

OPTOMETRIST & OPTICIAN

Moved to Sunnyside

Across from Postoffice

EVENING APPOINTMENTS

PHONE SUNNYSIDE 2761

WRITE BOX 698

**BEST
MILK SHAKE
On
The Project!**

WHERE?

at the

**Bowling
Alley**

Better Drop In

**FULL OR PART TIME
PIN SETTERS WANTED**

All-Star Fights Please; Set the Next on Dec. 4

Before a capacity crowd last Monday night at the Auditorium, Abie Chavez, Hanford's own pride and joy, dropped a very close eight-round decision to Joey Dolan in the boxing program.

Dolan, west coast featherweight champion, was hard pressed all the way and admitted after the show that it was one of the toughest fights he ever had. Abie gave away about five pounds and at least six inches in reach, but he won the hearts of almost everyone in the Auditorium by taking everything Dolan had to offer and in return dishing out plenty of punishment himself. Chavez, who hasn't boxed in several years, was in excellent condition and looked much stronger than Dolan did at the end. It was a beautiful exhibition of boxing, and the fans really enjoyed it.

In the semi-windup Frankie Gimble, Pasco Navy, continued on his winning way here in Hanford by besting the veteran Jack Bittle of Seattle in an action filled six-round. Bittle had Gimble in serious trouble several times with a looping left hand that caught the sailor squarely in the face; however, Gimble had the stuff to come back, and there was no doubt who the better boy was.

Earl Moore using a clever left jab easily outpointed Kaley Sonner in a special six-round event.

Probably the highlight of the entire show was the wrestling exhibition put on by "Irish" Jack Doyle of the Patrol Department and Bob Caldwell of Hankee-James Company. "Bad Boy" Doyle delighted the fans by his rough tactics, and on several occasions received boos for overplaying his act. At the end of one hour's wrestling Doyle was the winner by throwing his opponent two out of three falls. This exhibition was a pretty good indication that the fight fans of Hanford

First Basketball Game Set Tonight

Tonight in the Auditorium the basketball season will officially get under way when the strong Pasco Naval Station team meets Concrete and Masonry, one of Hanford's better quintets. This game will start at 8:00 p.m., and there will be no admission.

really go for professional wrestling, and it is planned to bring Doyle back on the next show against a more experienced opponent.

The Recreation Department announced this week that the next fight card will be held at the Auditorium on Monday night, December 4. An attempt is being made to bring together Leo ("The Lion") Turner, sensational young middleweight from Portland and Nick Peters, one of the best middleweights in the country. The fights, details of which will be given in next week's issue of The Sage Sentinel, are sponsored by the H.E.W. Employees Association.

The crew that flies DAY'S PAY, Hanford's own bomber, will be glad to hear from you at Christmas time. If you don't write—you're wrong.

J. L. MAST

Special Agent

for

NEW YORK LIFE

TELEPHONE PASCO 15

BOX 47

or

1518 SOUTH FOURTH

PASCO

Open Girls League Tues.

Tuesday will mark the opening of the Girls Basketball League when the teams will play at 8:00 p.m. in the Hanford Grade School gym.

Workouts in preparation for the opening tilts have been underway on Tuesdays and Thursdays for several weeks, and last Tuesday the members drew up their schedules and rules to govern the league. Games are planned for every Tuesday and Thursday in the school gym.

The following groups will participate in the league: Olympic Commissary, Women's Snack Bar, two teams who haven't decided on a name yet, Nurses and a group of high school girls from Trailer Village.

Prosser Aviation Center Changes in Management

Announcement has been made that the Prosser Aviation Center, formerly owned by F. L. Greenough, has recently come under the La Moreaux and Davison management and is now to be known as L & D Flying Service.

Instruction schedules are arranged at the student's convenience for flight time, and flight facilities are reported to be good. Ground schools held in conjunction with the L & D Flight School offer aerial navigation (radio, meteorology, general servicing and operation of aircraft) and civil air regulations.

A new course in aerial navigation will begin Monday at 8:00 p.m. in Prosser High School building. Registrations and information requests should be directed to the Prosser Aviation Center or phone 1103.



THE DAY AFTER THANKSGIVING

"Doc, there's something wrong with my stomach."

"Keep your coat buttoned and no one will notice it."

ASSOCIATED

proudly announces the appointment of

Mr. Earl Larkin

As Operator of

**WILLIAMS BOULEVARD
and
PERKINS AVENUE**

COMMUNITY SERVICE STATION NO. 1

RICHLAND

Phone 112

NOW OPEN



Let's get ASSOCIATED

with this famous line of products

ASSOCIATED AVIATION ETHYL • FLYING A GASOLINE

VEEDOL AND TYDOL MOTOR OILS

VEEDOL SAFETY-CHECK LUBRICATION • FISK TIRES

AERO BATTERIES

TIDE WATER ASSOCIATED OIL COMPANY

Prosser Aviation Center

Ground School Now Operating Every

MONDAY, WEDNESDAY and FRIDAY

Evening Classes from 8:00 P.M. to 10:00 P.M.

Also Day Classes Arranged

Held in Prosser High School Building, in conjunction with L & D Flying Service, Prosser Aviation Center, Prosser, Washington

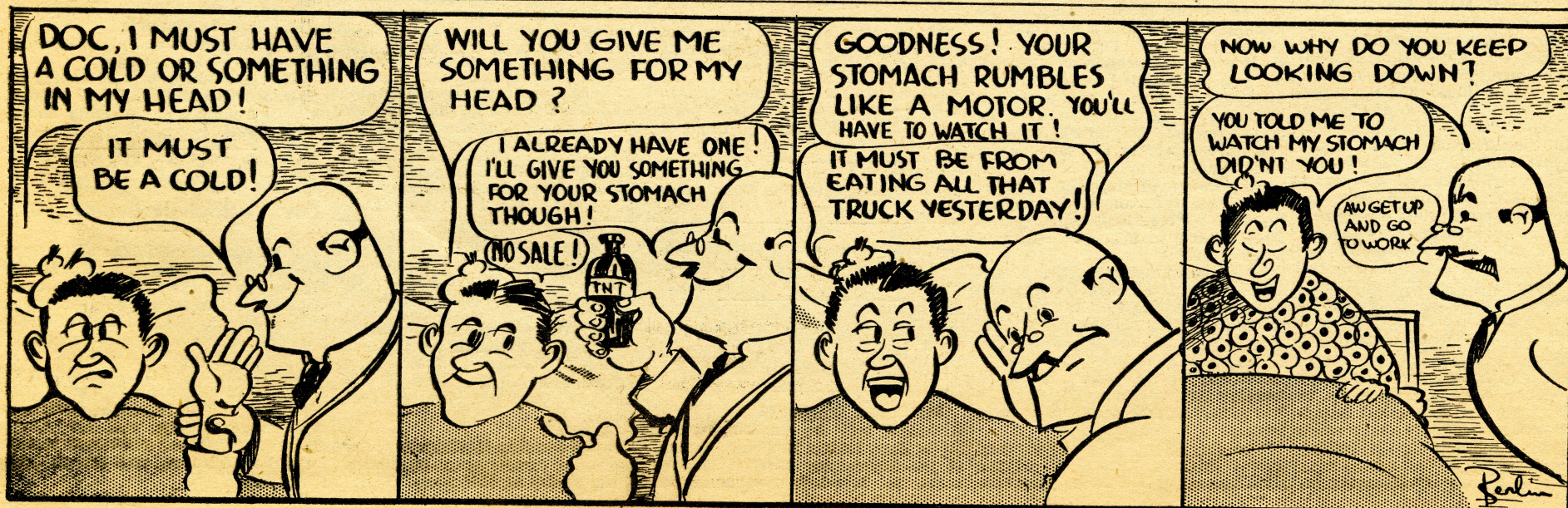
All necessary instruction for C.A.A. Private Pilot examinations and flight instruction leading to Private Pilot's rating by Government licensed instructors.

Now's the time to prepare for flying your OWN plane in the near future !!

Farsighted men and women who want to fly register NOW and be able to meet all C.A.A. requirements for that Private Pilot's License !!

Call in person or phone Prosser Aviation Center, 1103. Complete new course starting November 27, beginning in Aerial Navigation.

SANDY SAGE: Double Talk



Business Schedule

SHOPPING		A.M.	P.M.
Anderson, C. C., Stores			
Co., Goethals Dr. & Lee Blvd., Mon.—			
Thurs.	10:15—	6:00	
Fri.	12:30—	9:30	
Sat.	10:15—	6:00	
Bank, Richland Office of			
Seattle First National			
Knight Ave., Mon.—			
Fri.	10:00—	3:00	
Fir. Eve.	7:00—	9:00	
Saturday	10:00—	12:00	
Barber Shop, Ganzel's			
Mon.—Sat.	8:30—	8:30	
Beauty Shop, Siler's			
Mon.—Fri.	8:00—	7:00	
Saturdays	8:00—	5:00	
Cafeteria, Richland,			
Goethals Drive & Knight Ave., Mon.—			
Sat.	5:30—	8:00	
	11:30—	1:30	
	5:30—	8:00	
Sunday	10:00—	2:00	
	4:00—	8:00	
Cashier, Administration Bldg.			
Mon.—Sat.	8:00—	4:30	
1st Fri. in Month & Last Full Banking			
Day	8:00—	8:00	
Transient Quarters			
Coffee Shop, Mon.—			
Fri.	7:00—	10:30	
Sat.	11:30—	2:30	
	5:30—	8:00	
Sunday	8:00—	10:30	
	11:30—	8:00	
Drug Stores:			
The Drug Center, 708 Symon St. next to Garmo's Grocery			
Mon.—Sun.	9:00—	10:30	
Richland Thrifty Drug, Jackson St., next to theatre,			
Mon.—Sat.	6:45—	11:00	
Sunday	9:00—	11:00	
Food Stores:			
Garmo's Food Store			
Goethals Drive & Symons St.			
Mon.—Sat.	9:00—	7:00	
Randall and Doyle			
George Washington			

Way & Lee Blvd.,			
Mon.—Sat.	9:00—	7:00	
Safeway Food Store			
Goethals Dr. & Lee Blvd., Mon.—Sat.	9:00—	7:00	
Hospital, Kadlec, Guthrie & Swift Aves.,			
Visiting hours	2:00—	3:00	
	7:00—	8:00	
Pharmacy, Mon.—			
Sun.	8:00—	4:30	
Dental Service, Mon.—			
Sat.	9:00—	6:00	
Laundry and Dry Cleaners, Richland, Cullum Ave. & Gillespie St.,			
Mon.—Sat.	8:00—	8:00	
Morning Milk Co., also Ice, Cullum & Gillespie St., Mon.—Sat.	9:00—	4:30	
Mon. night	7:00—	9:00	
Post Office, George Washington Way and Knight Ave., Mon.—			
Sat.	8:00—	6:00	
General Delivery			
Mon.—Sat.	9:15—	6:00	
Rationing Office, George Washington Way & Swift Ave., Mon.—			
Fri.	8:00—	7:00	
Saturdays	8:00—	5:30	
Richland Motor Co., Goethals Dr. & Newton Ave. Garage Hours,			
Mon.—Sat.	8:00—	6:00	
Service Station,			
Mon.—Sat.	7:00—	8:00	
Sunday	10:00—	8:00	
Standard Service Station Symons St. & Goethals Dr., Mon.—Sun.	7:00—	10:00	
Style Center, on the Mall between George Washington Way and Goethals Dr.			
Mon.—Thur.	10:15—	6:00	
Fri.	12:30—	9:30	
Sat.	10:15—	6:00	
Theatre, Richland, George Washington Way,			
Mon.—Fri.	5:00—	11:00	
Sat.—Sun.	1:00—	11:00	
Western Union			
Mon.—Sat.	8:00—	10:00	
Sun. and Holidays	9:00—	11:00	4:00—6:00

Church Services

Sunday, November 24, 1944	
CATHOLIC SERVICE	
Father W. J. Sweeney	
Grange Hall	
Sat., 2 p.m. Children's Class.	
Sun., 7 and 11:30 Mass.	
UNITED PROTESTANT	
Rev. Thomas Acheson	
Rev. Kenneth Bell	
Sacajawea Grade School	
9:45 a.m. Sunday School	
11:00 a.m. Sunday Service	
6:30 p.m. Youth Fellowship Meeting.	
8:00 p.m. Church Service	
LUTHERAN CHURCH	
National Lutheran Church	
10:00 a.m. Sunday School.	
11:00 a.m. Church Services	
J. Milton Grimsrud, Pastor	
Community Church	
EPISCOPAL CHURCH	
Rev. Leo Dyson	
Sun., 10:00 a.m., Sunday School.	

Lewis-Clark School, Room 107.	
Mon., 8:15 p.m., Church Service, Community Church.	
LATTER DAY SAINTS	
James Thompson, Pres.	
Jefferson Grade School	
9:30 a.m. Priesthood meeting	
10:30 a.m. Sunday School	
6:30 p.m. Sacramental meeting	
LUTHERAN (Missouri Synod)	
Rev. R. E. Jaech	
Lewis Grade School Auditorium.	
10:00 a.m. Sunday School.	
11:00 a.m., Church Service.	
CHURCH OF CHRIST	
Lewis Grade School (Room 115)	
Sunday Services: 10:30 a.m., 7:30 p.m.	
CHRISTIAN SCIENCE CHURCH	
Room 112, High School Bldg.	
9:40 a.m., Sunday School.	
11:00 a.m., Church Services.	
Wed., 8:00 p.m. Services.	

Review 'Male Animal' Scheduled December 8

When the curtain rises December 8th on the Richland Village Players' presentation of "The Male Animal", three acts of fact-moving, hilarious entertainment await the Richland theatre-goer. The play, as written by James Thurber and produced in New York City with Elliott Nugent in the lead role, was a smash hit.

Who would think that the building of a new stadium (and the College Endowment Fund) would tremble in the balance, and a heated academic rumpus rage across the campus, all because a well-meaning professor announced that he was going to read to his class three letters by men whose profession was not letters but who had something sincere to say? It was the reputation of the writer of one of those letters and the reflection the College Board and staff thought it cast upon them which caused all the trouble.

Then, as if the easy-going Professor Turner were not already in enough turmoil, his marital happiness becomes decidedly shaky when the greatest football hero Mid-Western University ever had comes back to town and pays considerable at-

tention to the professor's wife, Ellen. (In the old days Ellen and the football hero were unofficially engaged.) The distraught husband watches them dance—"like angels"—groans, and is more disturbed than ever.

Throw in one of the biggest games of the football season—the Michigan game—and a fist fight between Professor Turner and his rival when the professor takes off his glasses and his professorial dignity and reverts to the male animal defending his cave and his mate against an interloper—and you have a mighty full measure of entertainment!

No wonder Cloete, the Turner maid, says when answering curious reporters: "No—Professor Turner ain't talking to nobody. His haid huhts him!"

Then the professor's young sister-in-law, who is also having football hero trouble but who is currently in love with a young intellectual, cries out, "Give me a guy without so much intellect or whatever it is. Somebody that doesn't want to be bawling the world out all the time!" and gives the professor a partner in misery.

The play from this point forward moves hilariously toward Ellen's final discovery that in the professor

Classified Ads

RATE—5c per word—minimum 50c per ad.
Deadline Monday 12:00 Noon before Friday of publication.
Ads may be paid for by check or in cash at Hanford office of The Sage Sentinel in Training and Relations Building on Kadlec Plaza or at Richland Construction Area Personnel Office in basement of old High School Building on Cullum Avenue by Tuesday of week of Publication.

FOR SALE

Oil Stove, also WANT TO BUY Late Model Radio. Merle Brown, Richland Tract House L-927.

Trailer House. 20' Gilkey. All Complete. \$800.00 cash or trade for larger trailer. Section V, Block 2, Lot 4.

Avon Products. Mrs. G. W. Bucklew, 1806 Lee Blvd., Richland.

Hand crocheted beanies and novelties. Section Q, Block 2, Lot 38.

SHRUBS, EVERGREENS, ORNAMENTALS. Home Nursery, 304 Second Ave. East, Kennewick.

1941 New Moon 22x8 foot house trailer. Michigan factory built to order. All glass wool insulated. Birch interior. Electric refrigerator and brakes. Thermostat control heat. Blower fan. Coleman oven—3 burner. Permanent bed and couch—sleeps four. Rugs, awning. Many specials. Everything like new. Original owner. \$2,000 CASH. See at 208 Douglass St., Richland, R-1104-J. Six tube console radio. Excellent condition. Fine reception. \$40.00 or trade for man's bicycle. 1205 Davenport St. R-1178-W.

Overstuffed chair. Used 6 months. Old Rose. Call R-17 evenings.

Child's winter coat, size 10. Good condition. R-927.

Wardrobe trunk. Barracks 5-A, Room 12.

1935 Plymouth Sedan. Good condition \$375.00 9x12' wine colored rug and pad, \$25.00. Also Room for Rent, Kitchen privileges. 1520 McPherson, Richland.

One 1941—24 ft. Schult Trailer in excellent condition. Cash Price, \$1,300. Inquire Section C, Block 3, Lot 21.

1941 Ford, Xanthus St.—2-40. Call any time.

Delicious homemade candy. Milk hershey or walnut roll bars. Excellent for gifts. 1304 Sanford Street, Richland.

Stuffed toys at \$1.50. Yarn lapel ornaments at \$1.00 Section P, Block 1, Lot 13.

Good pair boys shoes. Size 10½B. Worn only few times. 1306 Sanford Ave., Richland.

18' Sportsman coach trailer 1942 model. Good tires. Heater, cooking and heating stove. Hot plate. Have to see to appreciate. \$700. Cash. Section L, Block 2, Lot 8.

One 12x18 Broadloom rug with pad. Call R-166. Shown by appointment only.

Two-wheel luggage trailer for quick sale. Section O, Block 4, Lot 60.

Lady's black coat with fox collar. Size 14. 1424 McPherson after 6 P.M.

18' Palace house trailer, sleeps four, new Daveno. Must see to appreciate. Section X, Block 4, Lot 5.

Furniture—2 bedroom, living room, chairs, dinette. Can be seen Monday afternoon. 902 Williams, Richland.

22' trailer house. Complete. Reasonable. Section T, Block 3, Lot 26.

Remington Ribbed Barrel Automatic Shotgun, leather case, 2 boxes shells, \$100. 300 Savage Rifle, 2 boxes shells, \$60. 322 Cullum, Phone 619.

Winchester Model 12 pump shotgun, 12 gauge with 6 boxes shells. \$60.00 Contact Sage Sentinel.

Gibson Guitar Hawaiian, electric with amplifier. \$250. Also horse and saddle. Section Q, Block 1, Lot 60.

Soprano 80-Base Accordion, like new. Laskin Lamb Fur Coat, small. R-661.

she has, after all, a pretty good composite picture of "The Male Animal".

Episcopal Bishop on Village Visit Monday

All Saints Episcopal Church of Richland will be visited by the Right Rev. Edwin R. Cross, Bishop of the Missionary District of Spokane, on Monday, November 27.

Nearly new Daveno with pad. 112 Stevens Drive, Richland.

GOOD BUY—1935 LaSalle Sedan. New paint, battery, brakes. Good tires and mechanical condition. Contact Sage Sentinel or 24A, Rainier Court, Sunnyside.

FOR SALE OR TRADE

Equity in new 2-Bedroom Full Basement Home and furniture in Kennewick together with old model Chevrolet Coach in perfect condition. Cash—or will trade for low-mileage 41 model auto. Leave message at Kenn—3287, will meet prospect in Pasco or Kennewick after 7 p.m. D. Clem, Bks 65, Rm 35½, Hanford.

21' trailer. 4 wheels, aluminum, 2 new tires, electric hot plate, oil stove and heater for car. Bks 87, Rm 82.

FOR RENT

ROOM—to day worker or couple. 1518 Johnston, Richland.

WANT TO BUY

Car wanted. '37 to '41. Good condition. Will pay cash. R-793 or 1517 Johnston, Richland after 6 p.m.

Two-wheel luggage trailer in good condition with 8 or 7 foot long loading space. Call at 1313 Mahan, Richland.

Studio Couch, electric iron, alarm clock, Section M, Block 3, Lot 5.

30" suitcase or small trunk in good condition. Bks 56, Rm 21.

Piano. Good condition. Call R-575.

HELP WANTED

Woman for part time housework. 507 Torbett St., Richland. R-840.

Reliable woman care for child age 6 in Richland 3 days to enable mother shop in Seattle. Call R-1093-J.

WANTED—MISCELLANEOUS

Lady to teach sewing. Arrangements at your convenience. Mrs. A. R. Rickey, 1508 Hunt, Richland.

Good grade double barrel shotgun. 20 gauge, 26 inch barrels. Good condition. R-1230W.

Young man wants ride to Florida or any part of southeast. Share expenses and drive. Lyn Elliott, Gray Bldg., Pasco. Phone 145-W after 6 p.m.

LOST

Red coat in suit box between Barracks 34-B and 6-A. Return to Esther Kerchner, 6-A, Room 6. REWARD.

Small box containing gym clothes on Putnam bus. REWARD. Mrs. Blomberg. 408 Wright, Richland.

In Hanford Nov. 14 Toy Terrier, white with brown spots. Female. REWARD. Section L, Block 2, Lot 16.

Gold plated "Bulova" wrist watch near mess hall No. 4. Liberal REWARD. Mr. Lagerquist, Bks 60, Rm 94.

MISCELLANEOUS

Insure your automobile, truck or trailer with the FARMERS INSURANCE GROUP. New low gas rationing rates. Local agent. Section B, Block 2, Lot 34, Hanford Trailer Camp.

Young woman will care for babies and small children in her own home. Day or night. 1305 Farrell Ave., Richland.

Experienced seamstress will do dressmaking and alterations. Mrs. W. A. Kelly, Bks 15-A, Room 15.

Confirmation service will be held at 8:15 p.m. at the old United Protestant Church, located at the corner of Goethals and Gillespie.

The women of the parish will entertain with a tea in honor of the Bishop at the home of Mrs. C. D. McCulloh at 1312 Mahan Ave. at 3:00 p.m. on the afternoon of November 27.

In the evening the Bishop will be the honor dinner guest of the men of the parish at 6:00 p.m.

Fast Cage Teams Play

The end of the first week of play in the Richland Basketball League found the Randall and Doyle and Wolves teams in a tie for first place with two victories and no defeats each.

The R. & D.'s had a 24 to 14 victory over the Hillbillies and a 27 to 13 win over the G. I. Joes to their credit, while the Wolves had downed Patrol 26 to 13 and Thrifty Drugs 27 to 19. The Drug team meanwhile defeated Midstate Amusements, 25 to 20, to bring them into a four-way tie for second place with one win and one loss each. The stores team also came in with a .500 standing, defeating 300 Area, 29 to 8, and losing to Midstate Amusements by a 39 to 22 count. Patrol was the fourth team to win one and lose one, dropping a 26 to 13 decision to the Wolves, and nosing out the Hillbilly quintet, 35 to 33, in the closest league contest of the week.

Scores started to rise as the teams began to get their shooting eyes, and indications point to some fast and free scoring frays as the season progresses. Individual high scores during the first week's play were Dennison of Stores, with 27 points in two games, and Hollenbach of the Randall and Doyle team who counted 24 in two games.

Next week's games at the Columbia High School gymnasium will be played on Monday and Thursday evenings, as follows: Monday, November 27—7:00 p.m., Randall and Doyle vs. Thrifty Drugs; 8:00 p.m.—300 Area vs. Midstate Amusements. Thursday, November 30—7:00 p.m., Patrol vs. Stores; 8:00 p.m., Wolves vs. G. I. Joes.

All Villagers are invited to attend these league games, which offer top flight basketball play and plenty of fast action.

Arrange Informal "Gym" Nights for Villagers

In response to requests from groups totalling some twenty-five men, a series of "open" gym nights has been arranged, with the first scheduled for Thursday evening, November 30, at the Sacajawea Grade School gymnasium.

It is planned to have informal basketball, volleyball, and badminton competition arranged during these open gym periods, with calisthenics also a possibility. The purpose of these open periods is to provide gym recreation for those men of the Village who are not engaged in some organized sports activity program but who do want a weekly "workout". Expansion of the program will depend upon the interest shown by men of the Village.

All men interested in this type of activity are invited to be present at the Sacajawea school gymnasium next Thursday between the hours of 7:00 and 10:00 p.m.

Give Precautions on Preventing Pipe Freeze

To protect home water lines in the Village during the freezing season all residents are advised to take the following steps in turning off the water for the outside hose connection:

1. Close the valve which is located just inside the basement opposite the outside house connection.
2. Open small cock on the bottom of this valve to allow drainage of water.
3. Open the outside faucet to which hose is connected.
4. Roll up hose and place in basement for winter storage.

This procedure does not apply to prefabricated houses, as a special key is required for closing these water lines.

Men's Teams Organize For Volleyball League

First games in an informal volleyball league, organized by the Men's Bible Class of the United Protestant Church, are to be played next Tuesday, November 28, at the Sacajawea Grade School gymnasium, according to present plans.

Four teams are scheduled to participate in the opening games, including: Administration Building, Engineers, Safety, and 300 Area. It is expected that additional teams will be added as the season progresses.