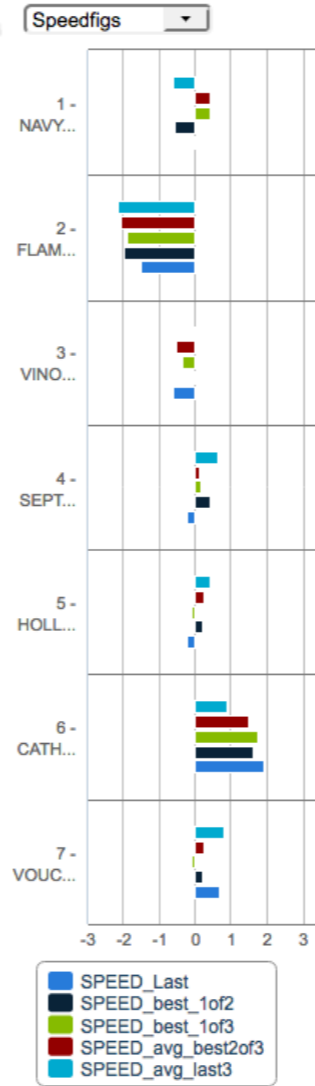
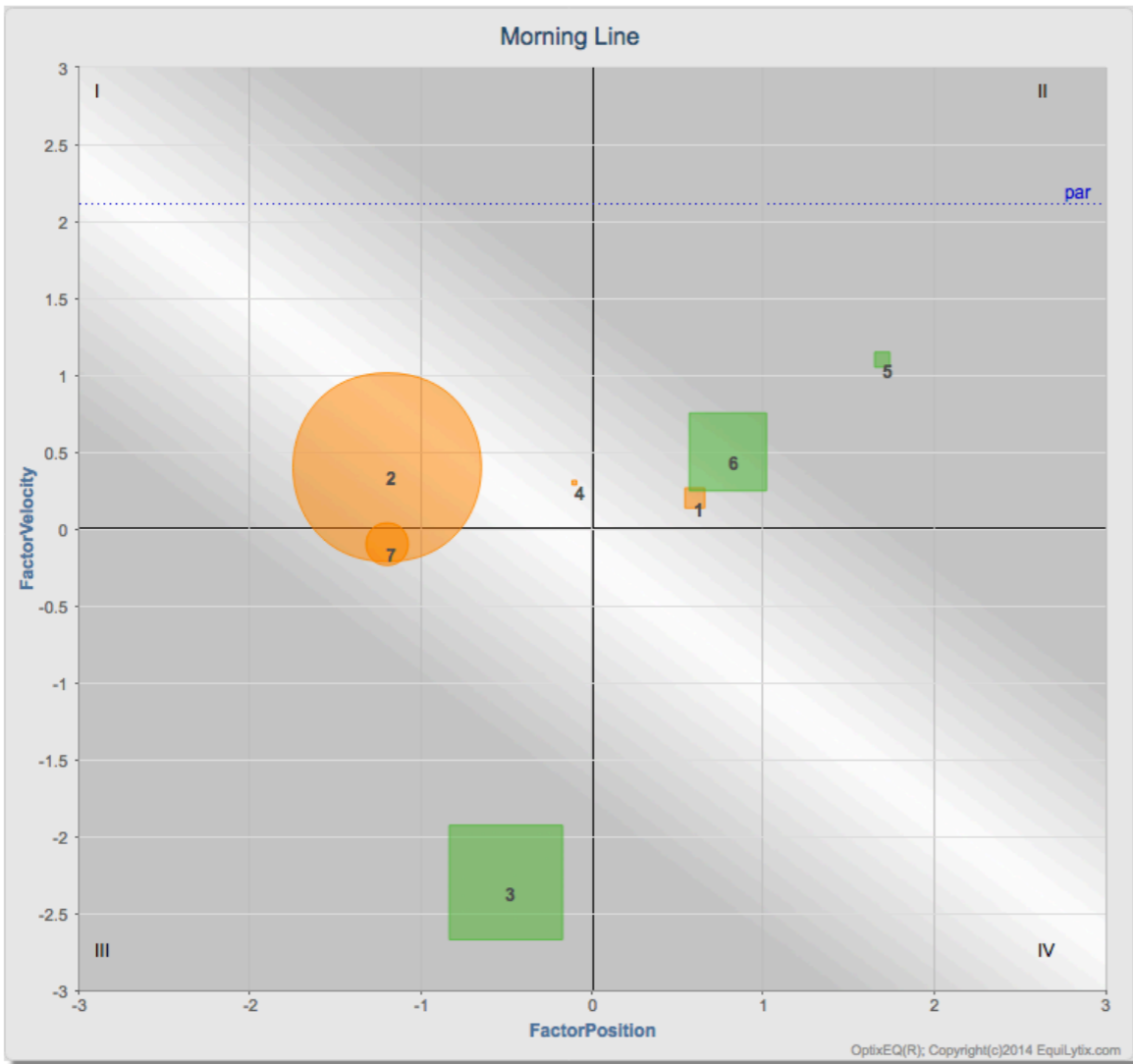


optixRPM<sup>™</sup> E 7  
EP 2 P PC 3 4 C 1 5 6

Morning Line  
<=3--15---+  
Green Orange Red

- Morning Line
- DaysLast Race
- Impact TSD
- Map 1st Call
- Map 2nd Call
- Optix GRID
- Trainer STAT
- Jockey STAT
- Quad STAT



PN	Horse	PP	ML	DaysLast	Trainer	Jockey	oCg	oNg	Sex	Age	flg	RPM
1	NAVY ARMED GUARD	1		27	SCOTT JOAN	CASTANON J L			G	3		C
2	FLAMEAWAY	2		35	CASSE MARK E	LEZCANO JOSE			C	3		EP
3	VINO ROSSO	3		50	PLETCHER TODD A	VELAZQUEZ J R			C	3		PC
4	SEPTIMIUS SEVERUS	4		24	WEAVER GEORGE	ORTIZ JOSE L			C	3		PC
5	HOLLYWOOD STAR	5		98	ROMANS DALE	ROSARIO JOEL			C	3		C
6	CATHOLIC BOY	6		70	THOMAS JONATHAN	FRANCO MANUEL			C	3		C
7	VOUCH	7		70	DELACOUR ARNAUD	CENTENO D E			C	3		E

PLOT Fit: RED, so be careful

Contention is average and Speed Rating is zero.

**Early Pace**

2 - not a lot of pace in here so expect him to be on the lead, large circle typically indicates late pace vulnerability, but sometimes he shows fight, if he can repel pressers and open up, maybe he can hold on for a piece, has recent pattern of Good Race - Bad Race.

7 - first race since the Remsen 70d ago and will need to turn tables on #6 CATHOLIC BOY, should be in a tracking/pressing position, may try and put inside speed away early on the turn, open up and hold off off-pace types, shorter distance should help his cause.

3 - low Q3 position is a concern since he hasn't been too far off the pace in his first two races and the PLOT position suggests he may have to work harder v. this group to keep up at the 2nd call, it could leave him vulnerable late.

4 - comes off an improved OptixFIG in his first start v. winners despite breaking SLOG and being slightly X\_FLOW, PLOTs right off the 2,7 and might trip well, first time going two turns, but NOTES pegged him as a STRETCH? candidate off his debut.

**Off Pace**

1 - just broke maiden over today's track, has a back OptixFIG of 91 as a 2y, so there's room for improvement, exotics player passing tired horses for the underneath slots.

5 - faces much softer than he has been recently, scratched out of the Holy Bull for this one, however OptixFIGs and grades were on the decline prior to the benching, also we still consider this guy more of a one-turn horse, might be overplayed here.

6 - obvious player, cuts back in distance off a big win B+ in a PERFECT trip Remsen, today's pace scenario not ideal for his closing style, also TAMPA is a very sandy surface and not all horses adapt to it, some things to consider when backing what could be a very heavy favorite.