

DNA Engineering

M1D6

20.109

09.30.10

Interpreting last year's ligation

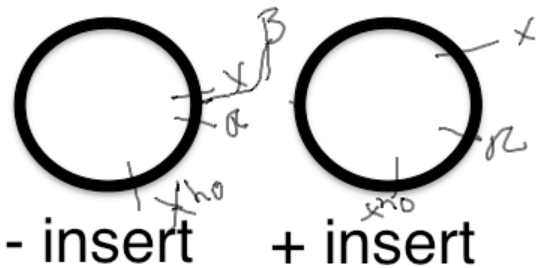
- Did the positive control work for many groups?
- No ligase results?
- Bkb + ligase tells you?
- What variations may be giving differences seen for experimental samples?

Team Color	5 ng pCX-EGFP	B+ i, no ligase	B, + ligase	B+ i, + ligase <i>list each plate</i>
RED	1400 4000	0	~4	35, 11, 12, 13, 14, 15, 16, 17 , 27
ORANGE	700	3	12	14, 20
YELLOW	~4000	0	~120	~560
GREEN	1000	936	24	456, 400
BLUE	25 12	0	1	3 218, 152
PINK	2016	0	4	128, 129
PURPLE	~3224	0	0	18, 20



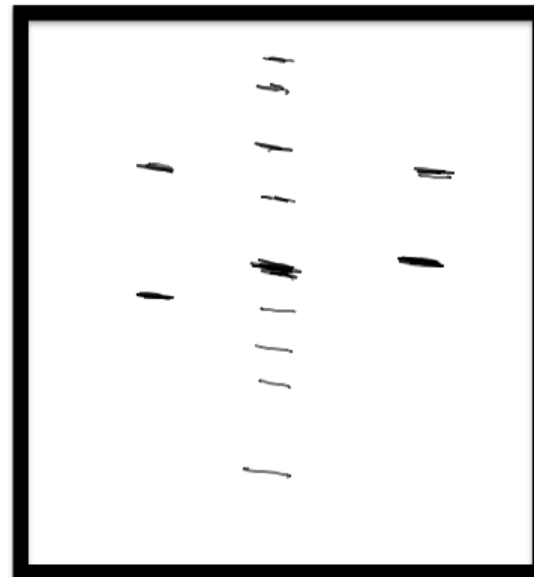
Last time in 20.109....

Set up diagnostic digests



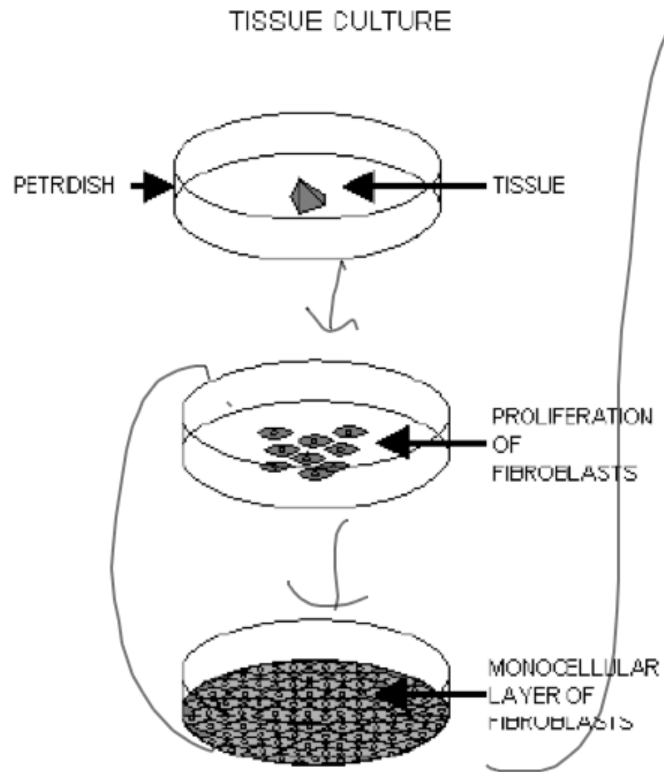
Today, run gel

⊖ M ⊕



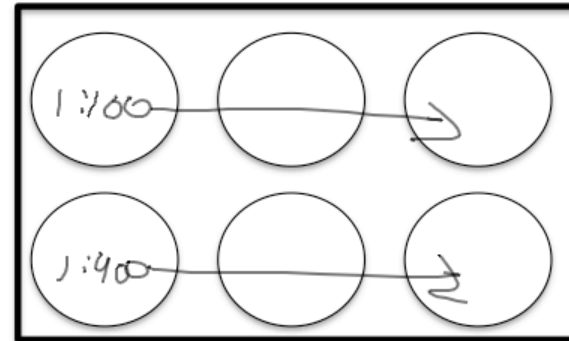
While gel runs,
peer review
with Neal/Linda

Also today: TC for fun....

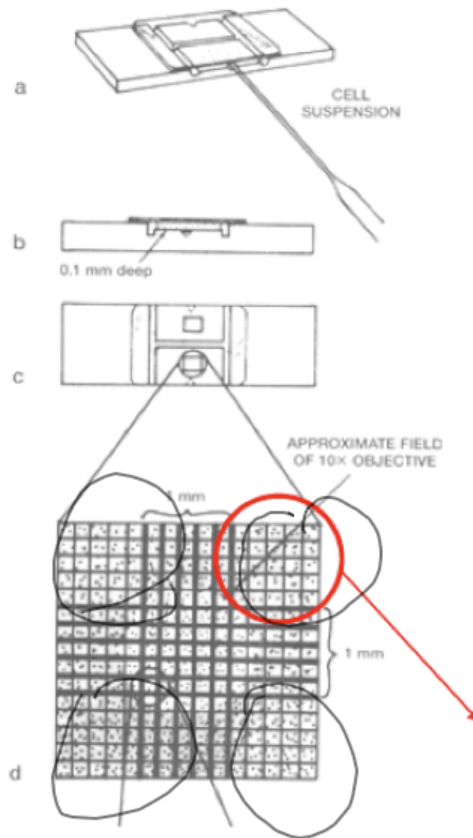


SPLIT
+ trypsin

Handwritten text with arrows pointing to the subculture wells.



Figuring out how many cells you have



Avg# of 4x4
6 corners

x 10,000

cells
ml

Growing bacterial cells vs mammalian cells

For both need:

food, good pH, good OC \rightarrow best 37°
 \rightarrow MES 37°
 \rightarrow yeast 30°

For bacteria:

Tryptone, yeast extract, salt, \Rightarrow "LB"
+/- antibiotic, agar

Amp^r

Hyg Thick Limit

For MES cells:

DMEM, calf serum, glutamine, pen/strep, \rightarrow LI⁺

Food

GF

energy

antibiotic

Today and next week...

R TC / gel + peer review

F 2 - 4:30 O/H

Progress report to Stellar before the start of lecture
Read Mod1 Day7 + do calculations for experiment

T cont: ΔS , $\Delta 3EG$ \rightarrow ΔMES

R FACS