

Assay Class: Red to Blue
 Data Path: C:\... bioanalyzer\2100 expert\data\2010-10-07\Silver_10-7-10.xad

Created: 10/7/2010 3:08:47 PM
 Modified: 10/7/2010 3:37:25 PM

Flow Cytometry Run Summary

Assay: C:\Program Files\Agilent\2100 bioanalyzer\2100 expert\assays\cells\Red_to_Blue Series II.xsy

Assay Type: Cellular Version: 2.1

Assay Class: Red to Blue

Comments: Red to Blue
 This assay is for applications that apply a red reference dye and analyze blue fluorescent cells within a red population

Acquisition Mode: Default Samples Run: 6

User Name:

Company:

Instrument: Instrument Name: DE72905360 Firmware: C.01.069
 Serial #: DE72905360 Type: G2938C

Chip Comments:

Sample Name	Sample Blue Comment	Blue Staining	Red Staining	Sta tus	Total Event s	% of Gated	Observation
Sample 1				✓	876	11.5	
Sample 2				✓	1033	4.9	
Sample 3				✓	1000	7.7	
Sample 4				✓	890	5.2	
Sample 5				✓	1077	3.7	
Sample 6				✓	611	21.6	

Assay Class: Red to Blue
Data Path: C:\... bioanalyzer\2100 expert\data\2010-10-07\Silver_10-7-10.xad

Created: 10/7/2010 3:08:47 PM
Modified: 10/7/2010 3:37:25 PM

Flow Cytometry Assay Details

Data Acquisition Parameters

Number of Available Sample Wells (Max.) : 6
Measurement Mode : Default

Graph Settings

Histogram Settings :

Blue :

Minimum : 0.01
Maximum : 10000
Scale : log

Red :

Minimum : 0.01
Maximum : 10000
Scale : log

Dot Plot Settings :

Blue :

Minimum : 0.01
Maximum : 10000

Red :

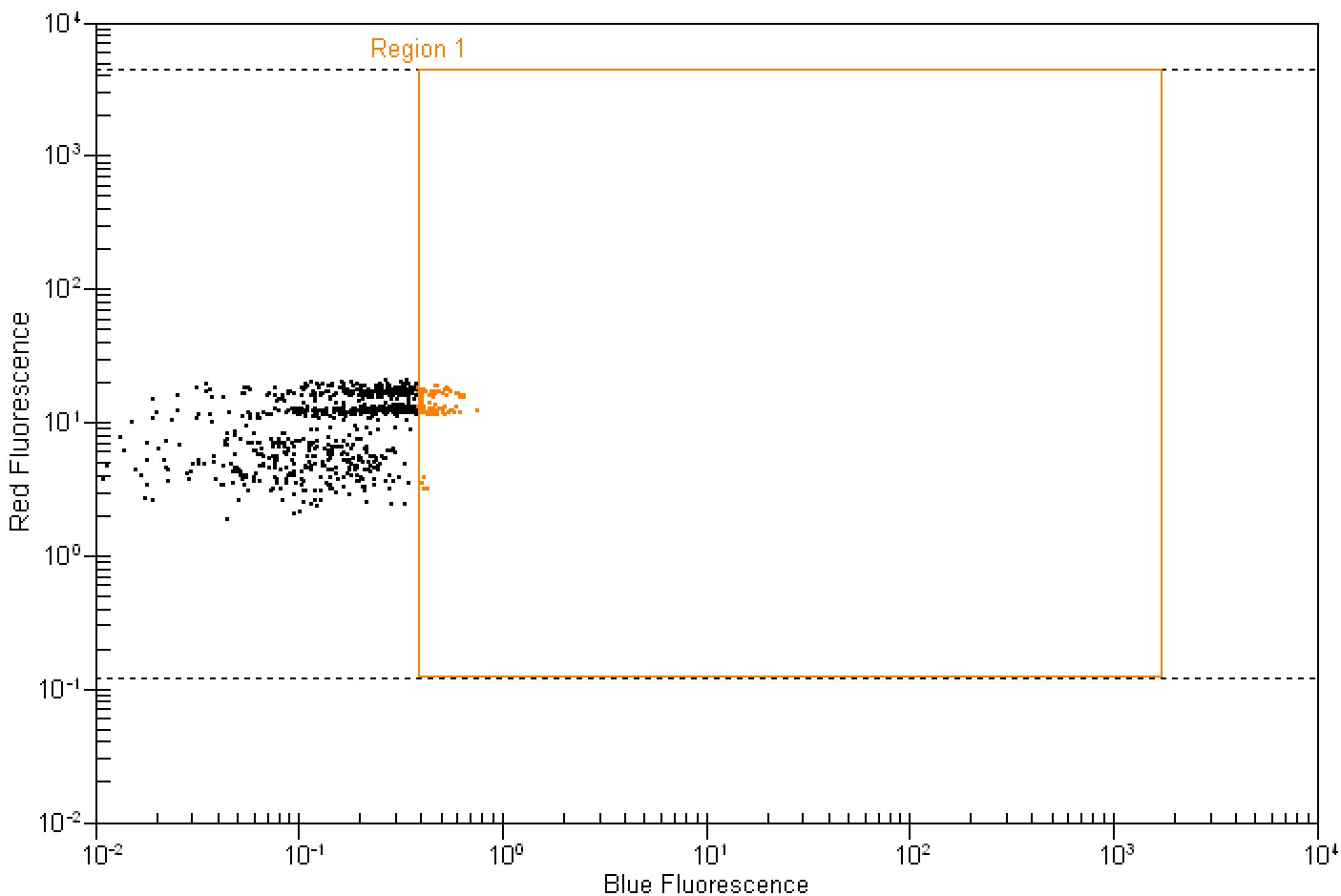
Minimum : 0.01
Maximum : 10000

Assay Class: Red to Blue
 Data Path: C:\... bioanalyzer\2100 expert\data\2010-10-07\Silver_10-7-10.xad

Created: 10/7/2010 3:08:47 PM
 Modified: 10/7/2010 3:37:25 PM

Dot Plot Summary

Sample 1



Dot plot statistics for sample 1 :

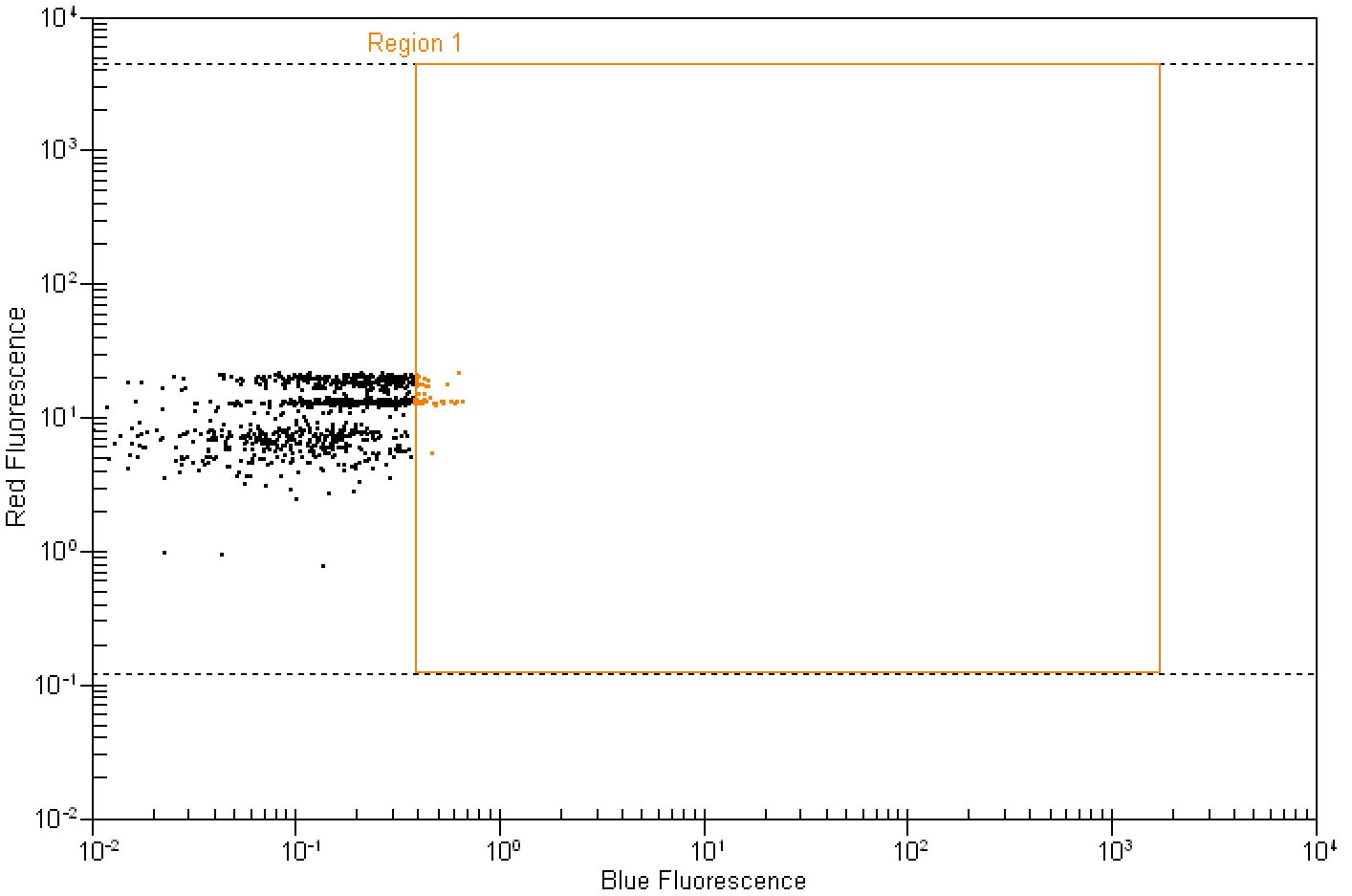
Region	XMean	YMean	#Events	Sample 1		StdDevX	StdDevY	CV%X	CV%Y	X GMean	Y GMean
				%Total	% of gated						
All Events	0.21	10.97	876	100.00	N/A	0.14	5.06	66.21	46.16	0.15	9.53
Region 1	0.47	13.65	101	11.50	11.50	0.07	3.05	15.91	22.38	0.46	13.14

Assay Class: Red to Blue
 Data Path: C:\... bioanalyzer\2100 expert\data\2010-10-07\Silver_10-7-10.xad

Created: 10/7/2010 3:08:47 PM
 Modified: 10/7/2010 3:37:25 PM

Dot Plot Summary Continued ...

Sample 2



Dot plot statistics for sample 2 :

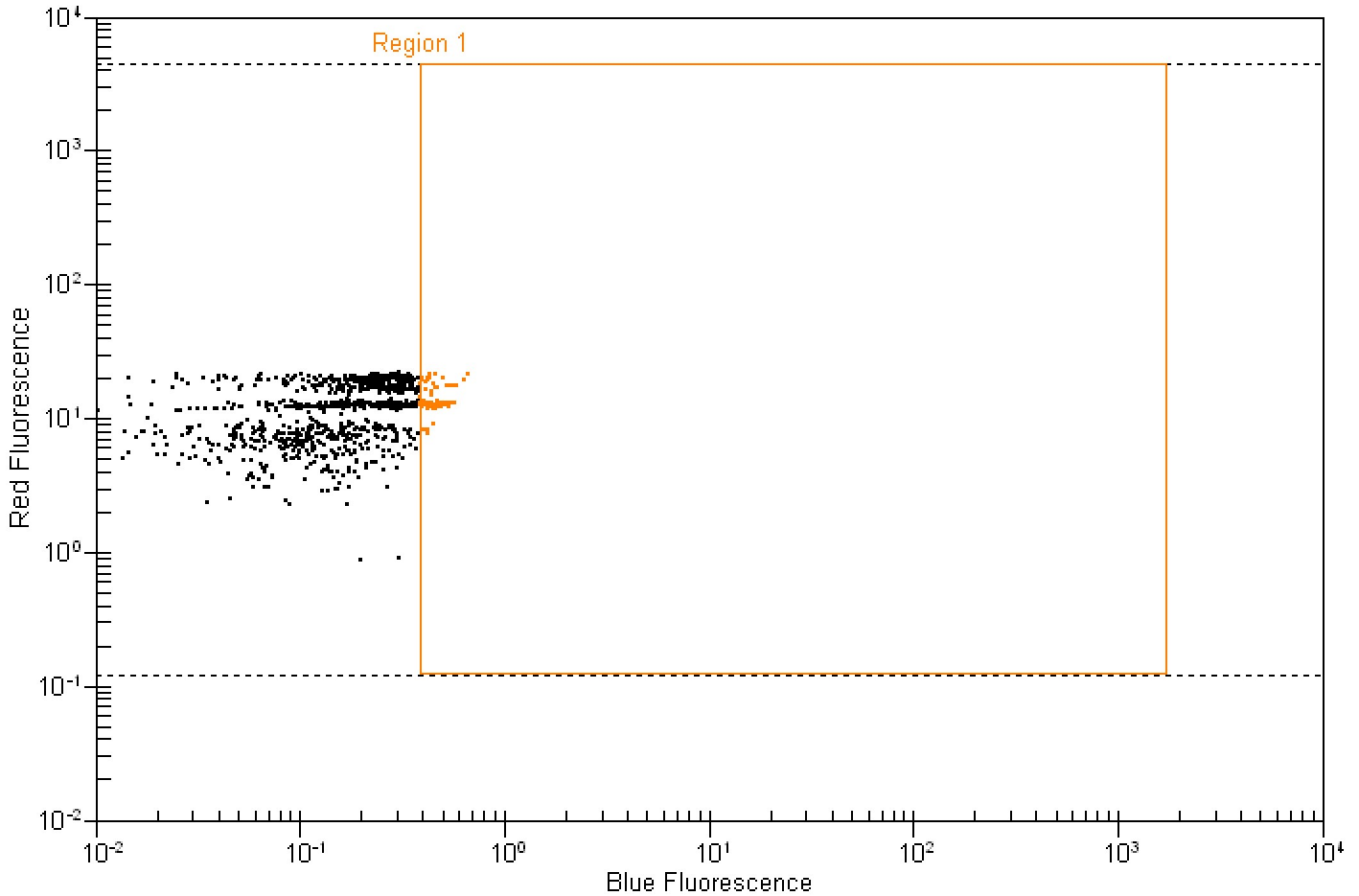
Region	XMean	YMean	#Events	Sample 2		StdDevX	StdDevY	CV%X	CV%Y	X GMean	Y GMean
				%Total	% of gated						
All Events	0.18	11.89	1,033	100.00	N/A	0.12	5.12	66.59	43.05	0.13	10.62
Region 1	0.45	14.78	51	4.90	4.90	0.07	3.10	16.19	21.00	0.45	14.43

Assay Class: Red to Blue
 Data Path: C:\... bioanalyzer\2100 expert\data\2010-10-07\Silver_10-7-10.xad

Created: 10/7/2010 3:08:47 PM
 Modified: 10/7/2010 3:37:25 PM

Dot Plot Summary Continued ...

Sample 3



Dot plot statistics for sample 3 :

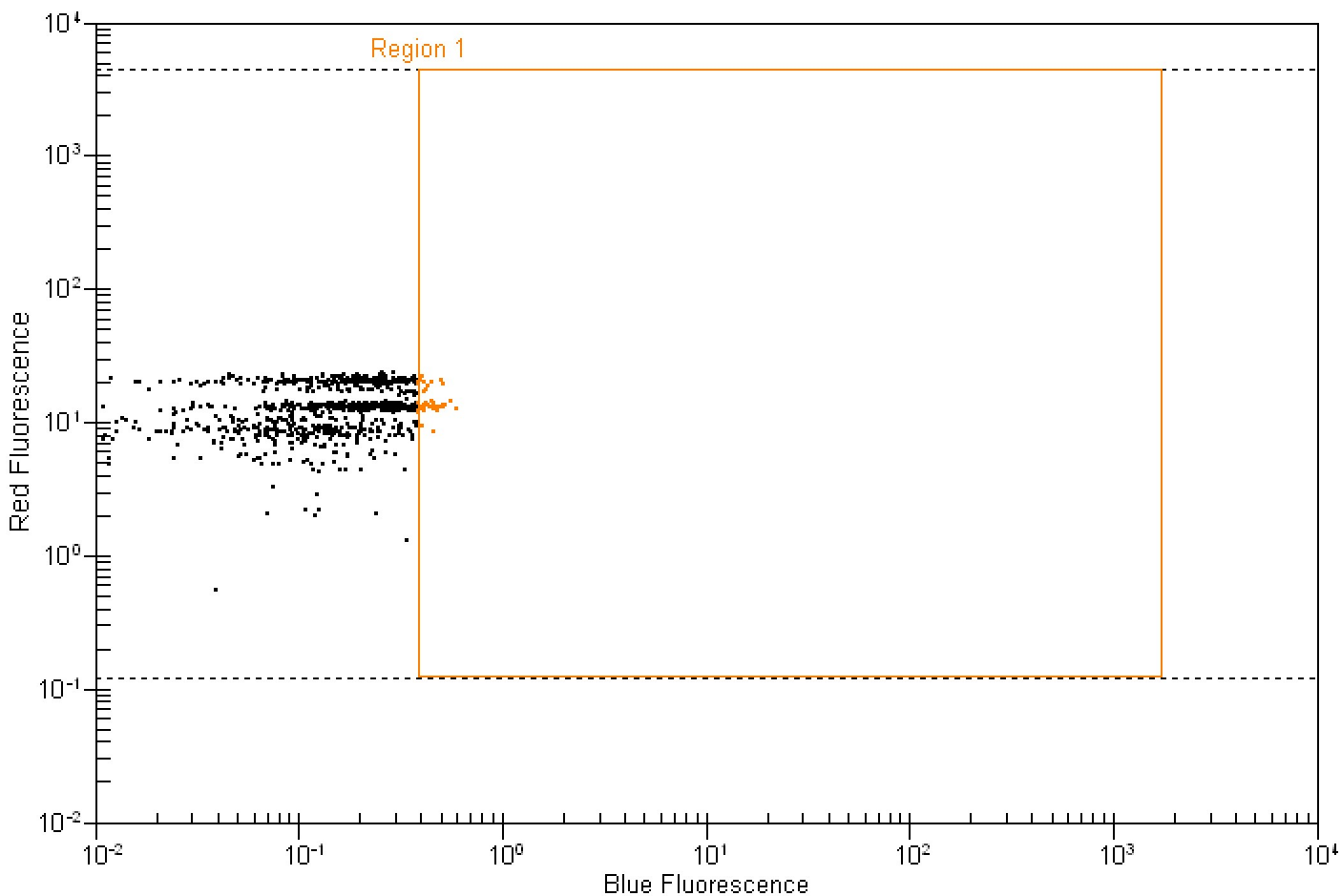
Region	XMean	YMean	#Events	Sample 3		StdDevX	StdDevY	CV%X	CV%Y	X GMean	Y GMean
				%Total	% of gated						
All Events	0.19	11.84	1,000	100.00	N/A	0.13	5.09	66.27	42.98	0.14	10.60
Region 1	0.45	14.17	77	7.70	7.70	0.06	3.09	13.38	21.79	0.45	13.85

Assay Class: Red to Blue
 Data Path: C:\... bioanalyzer\2100 expert\data\2010-10-07\Silver_10-7-10.xad

Created: 10/7/2010 3:08:47 PM
 Modified: 10/7/2010 3:37:25 PM

Dot Plot Summary Continued ...

Sample 4



Dot plot statistics for sample 4 :

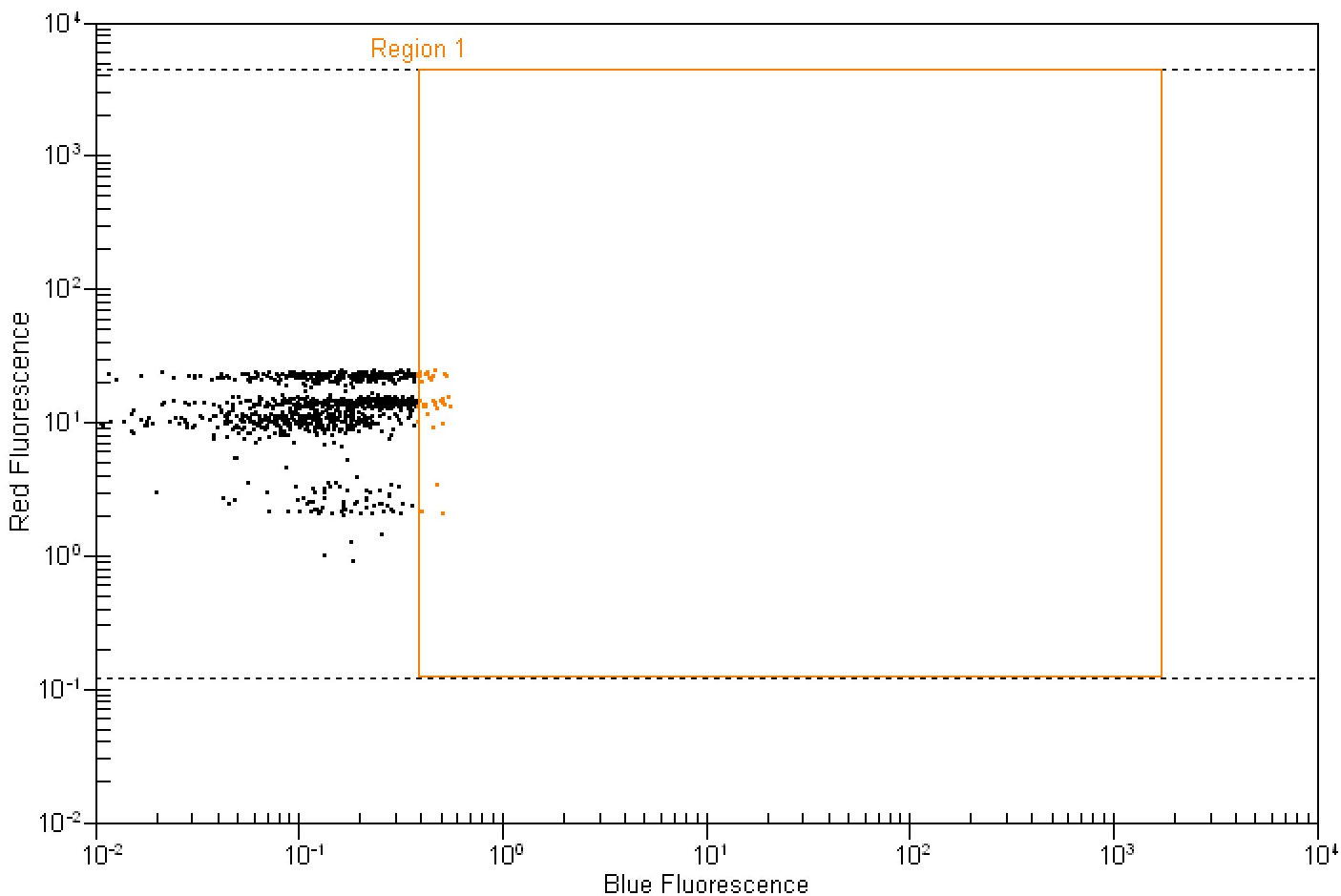
Region	XMean	YMean	#Events	Sample 4		StdDevX	StdDevY	CV%X	CV%Y	X GMean	Y GMean
				%Total	% of gated						
All Events	0.17	13.11	890	100.00	N/A	0.12	4.96	68.63	37.82	0.12	12.07
Region 1	0.44	14.37	46	5.20	5.20	0.05	3.20	11.09	22.24	0.44	14.04

Assay Class: Red to Blue
 Data Path: C:\... bioanalyzer\2100 expert\data\2010-10-07\Silver_10-7-10.xad

Created: 10/7/2010 3:08:47 PM
 Modified: 10/7/2010 3:37:25 PM

Dot Plot Summary Continued ...

Sample 5



Dot plot statistics for sample 5 :

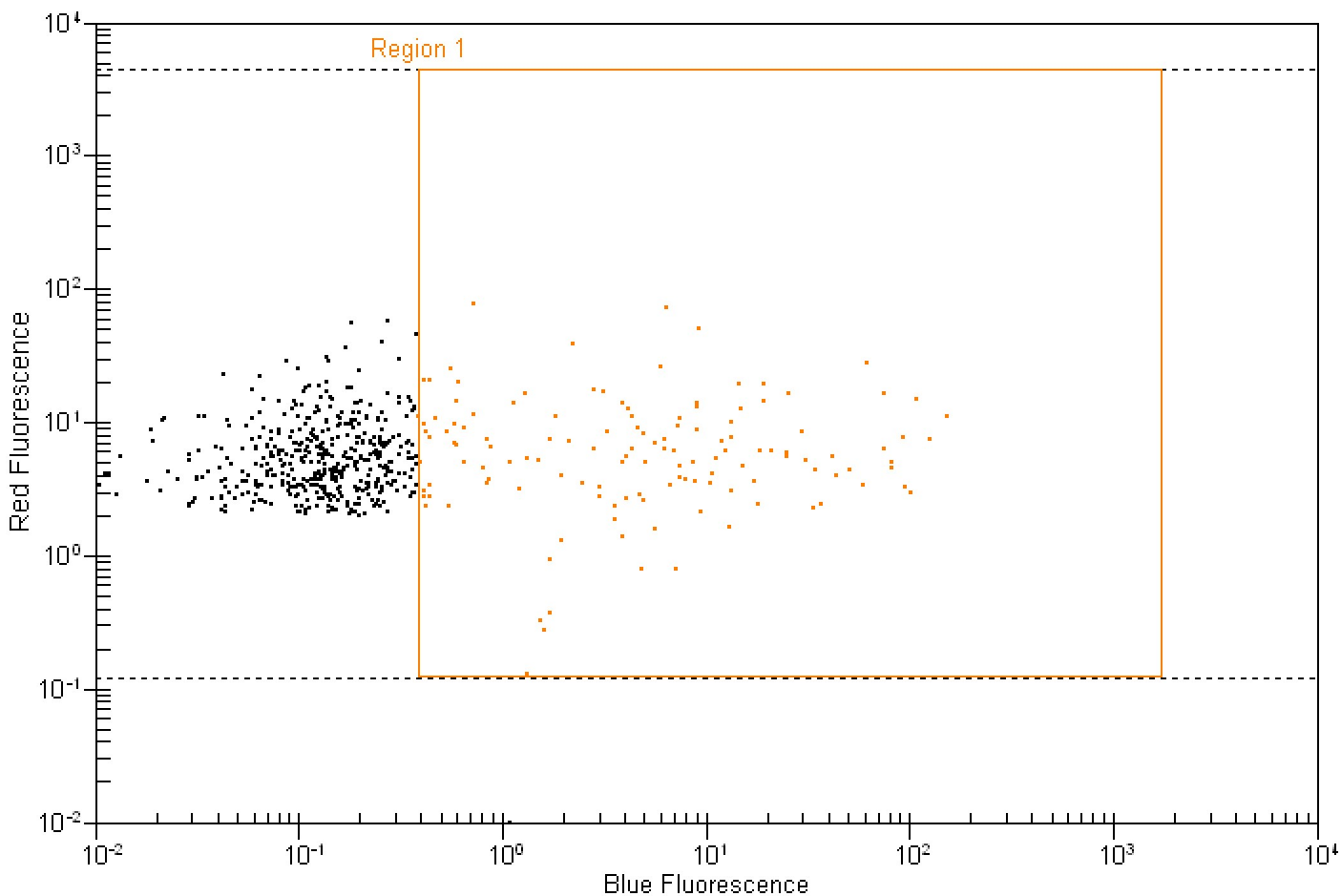
Region	XMean	YMean	#Events	Sample 5		StdDevX	StdDevY	CV%X	CV%Y	X GMean	Y GMean
				%Total	% of gated						
All Events	0.16	13.59	1,077	100.00	N/A	0.11	5.51	67.36	40.58	0.12	12.14
Region 1	0.45	15.79	40	3.70	3.70	0.05	5.94	11.35	37.62	0.45	14.05

Assay Class: Red to Blue
 Data Path: C:\... bioanalyzer\2100 expert\data\2010-10-07\Silver_10-7-10.xad

Created: 10/7/2010 3:08:47 PM
 Modified: 10/7/2010 3:37:25 PM

Dot Plot Summary Continued ...

Sample 6



Dot plot statistics for sample 6 :

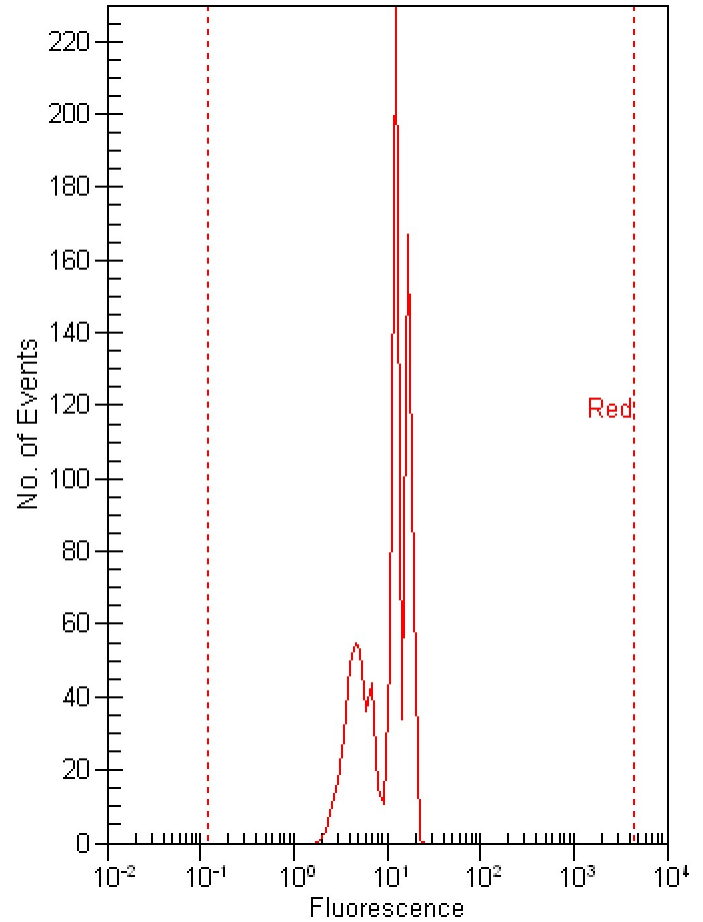
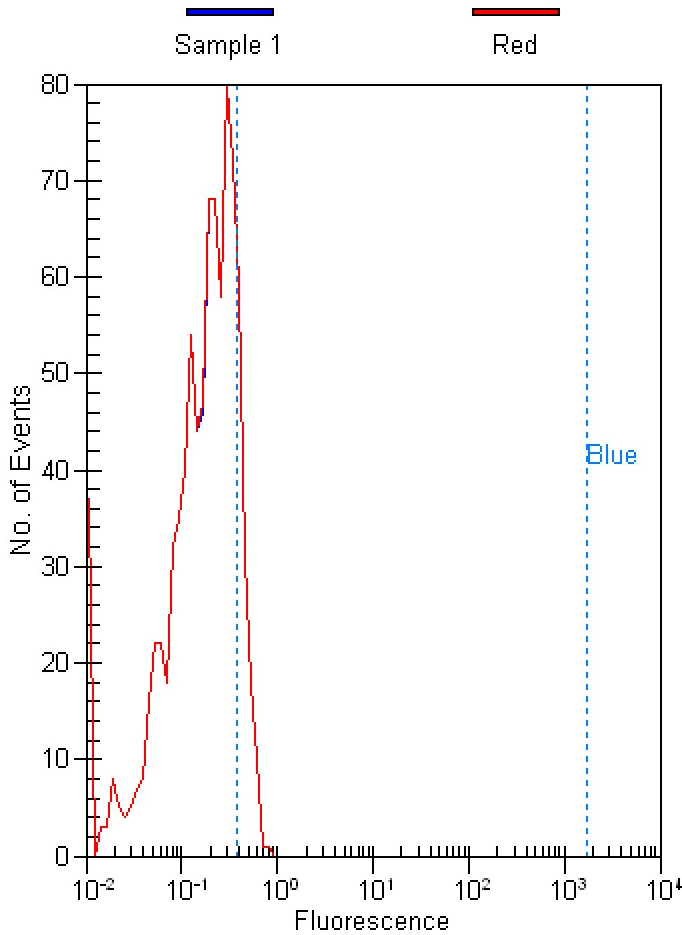
Region	XMean	YMean	#Events	Sample 6		StdDevX	StdDevY	CV%X	CV%Y	X GMean	Y GMean
				%Total	% of gated						
All Events	3.48	7.04	611	100.00	N/A	14.26	7.45	409.43	105.71	0.24	5.25
Region 1	15.57	8.87	132	21.60	21.60	27.44	10.81	176.27	121.81	4.68	5.66

Assay Class: Red to Blue
 Data Path: C:\... bioanalyzer\2100 expert\data\2010-10-07\Silver_10-7-10.xad

Created: 10/7/2010 3:08:47 PM
 Modified: 10/7/2010 3:37:25 PM

Histogram Summary

Sample 1



Histogram statistics for sample 1 :

Sample 1 -

Marker	Min	Max	#Events	%Total	% of gated	Mean	StdDev	CV%	GMean
All Events	0.01	0.75	876	100.00	N/A	0.21	0.14	66.21	0.15
Gated by Red	0.01	0.75	876	100.00	N/A	0.21	0.14	66.19	0.15
Blue on all events	0.39	1754.75	101	11.50	N/A	0.47	0.07	15.91	0.46
Blue on subset	0.39	1754.75	101	11.50	11.50	0.47	0.07	15.91	0.46

Histogram statistics for sample 1 :

Sample 1 -

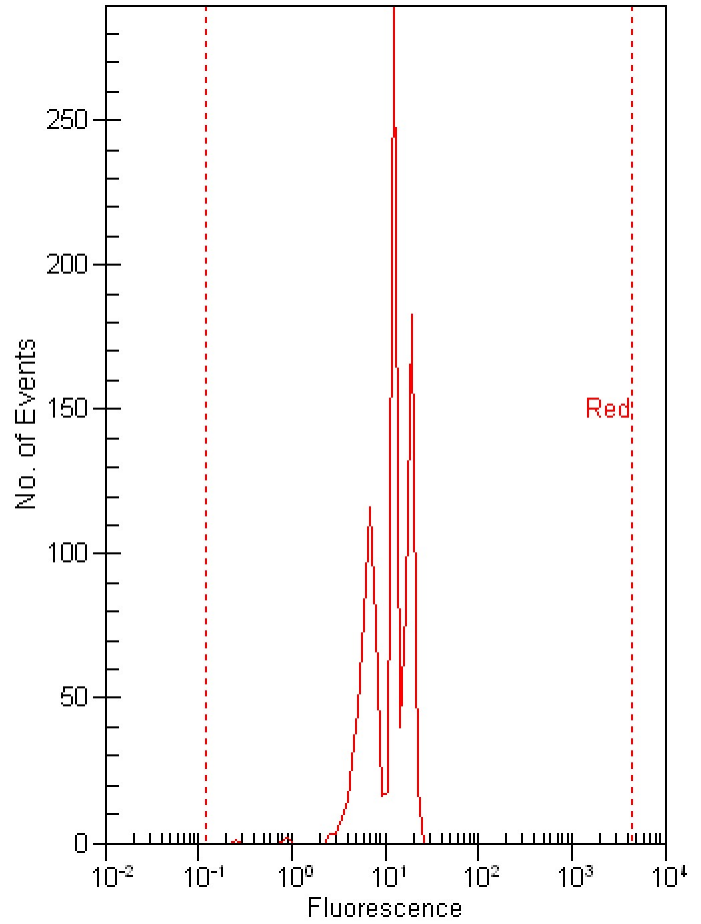
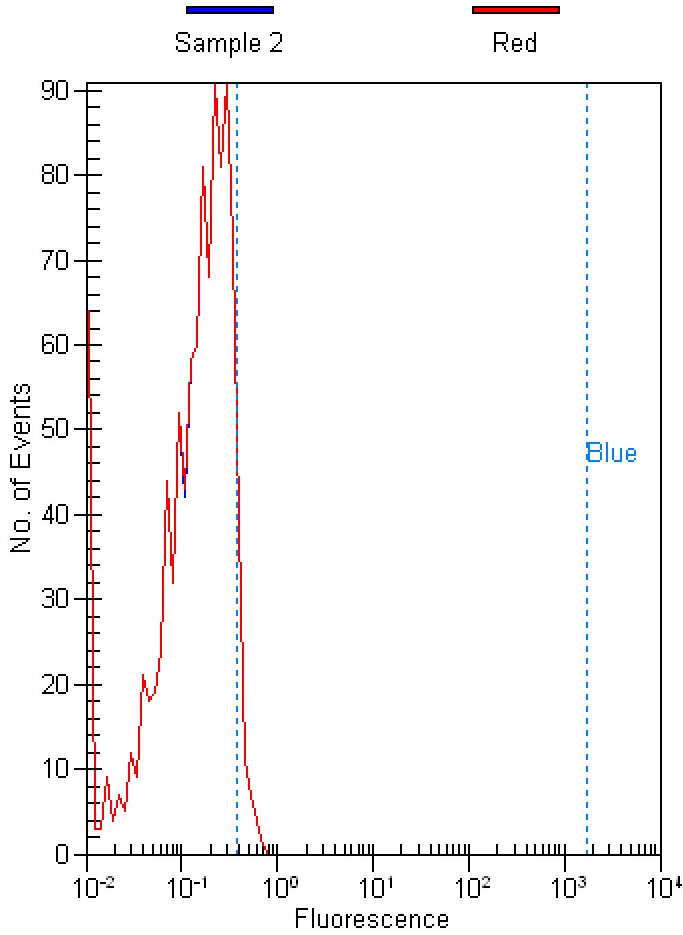
Marker	Min	Max	#Events	%Total	% of gated	Mean	StdDev	CV%	GMean
All Events	1.85	20.67	876	100.00	N/A	10.97	5.06	46.16	9.53
Red on all events	0.12	4523.79	876	100.00	N/A	10.97	5.06	46.13	9.53

Assay Class: Red to Blue
 Data Path: C:\... bioanalyzer\2100 expert\data\2010-10-07\Silver_10-7-10.xad

Created: 10/7/2010 3:08:47 PM
 Modified: 10/7/2010 3:37:25 PM

Histogram Summary Continued ...

Sample 2



Histogram statistics for sample 2 :

Sample 2 -

Marker	Min	Max	#Events	%Total	% of gated	Mean	StdDev	CV%	GMean
All Events	0.01	0.67	1,033	100.00	N/A	0.18	0.12	66.59	0.13
Gated by Red	0.01	0.67	1,033	100.00	N/A	0.18	0.12	66.59	0.13
Blue on all events	0.39	1754.75	51	4.90	N/A	0.45	0.07	16.19	0.45
Blue on subset	0.39	1754.75	51	4.90	4.90	0.45	0.07	16.19	0.45

Histogram statistics for sample 2 :

Sample 2 -

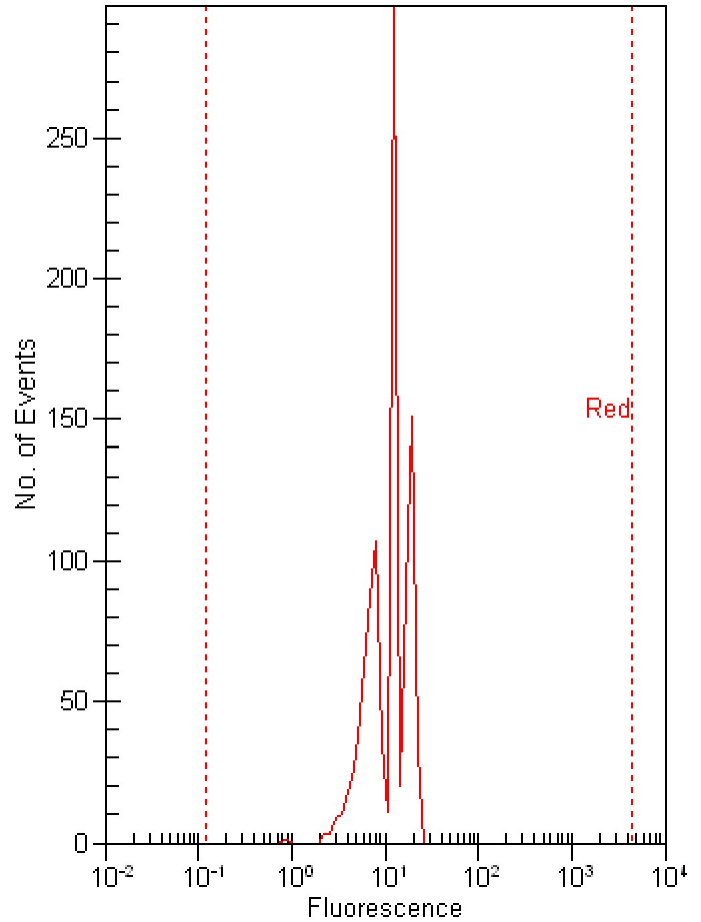
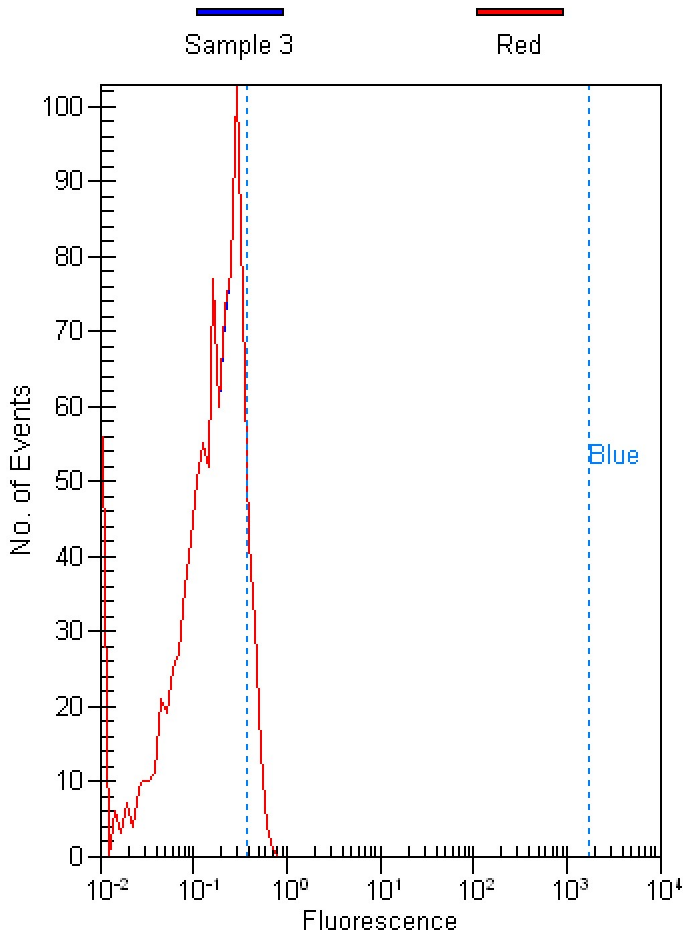
Marker	Min	Max	#Events	%Total	% of gated	Mean	StdDev	CV%	GMean
All Events	0.26	21.69	1,033	100.00	N/A	11.89	5.12	43.05	10.62
Red on all events	0.12	4523.79	1,033	100.00	N/A	11.90	5.12	43.03	10.63

Assay Class: Red to Blue
 Data Path: C:\... bioanalyzer\2100 expert\data\2010-10-07\Silver_10-7-10.xad

Created: 10/7/2010 3:08:47 PM
 Modified: 10/7/2010 3:37:25 PM

Histogram Summary Continued ...

Sample 3



Histogram statistics for sample 3 :

Sample 3 -

Marker	Min	Max	#Events	%Total	% of gated	Mean	StdDev	CV%	GMean
All Events	0.01	0.67	1,000	100.00	N/A	0.19	0.13	66.27	0.14
Gated by Red	0.01	0.67	1,000	100.00	N/A	0.19	0.13	66.22	0.14
Blue on all events	0.39	1754.75	77	7.70	N/A	0.45	0.06	13.38	0.45
Blue on subset	0.39	1754.75	77	7.70	7.70	0.45	0.06	13.38	0.45

Histogram statistics for sample 3 :

Sample 3 -

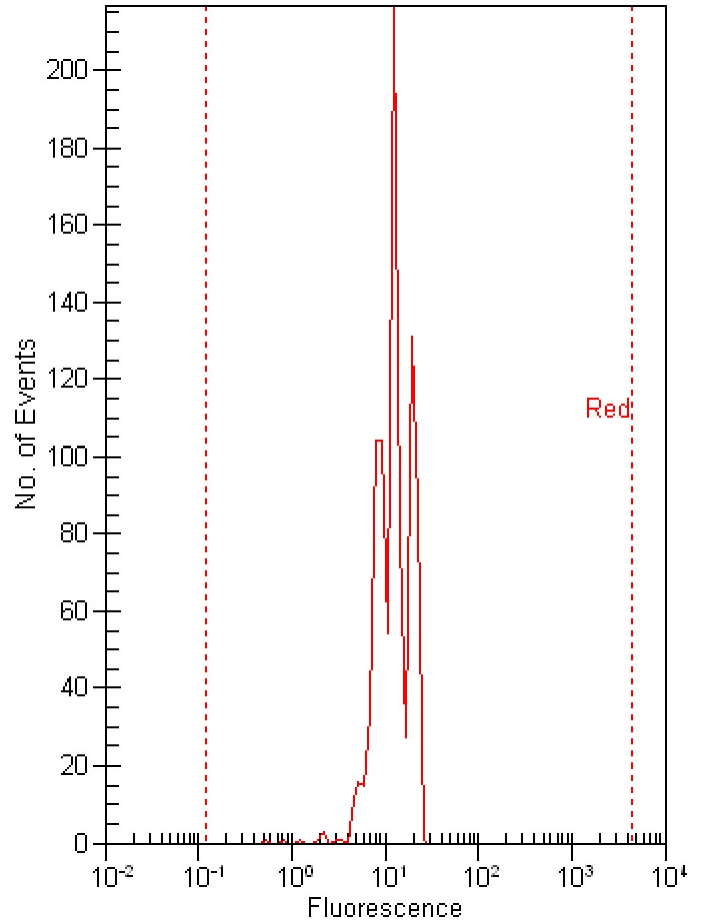
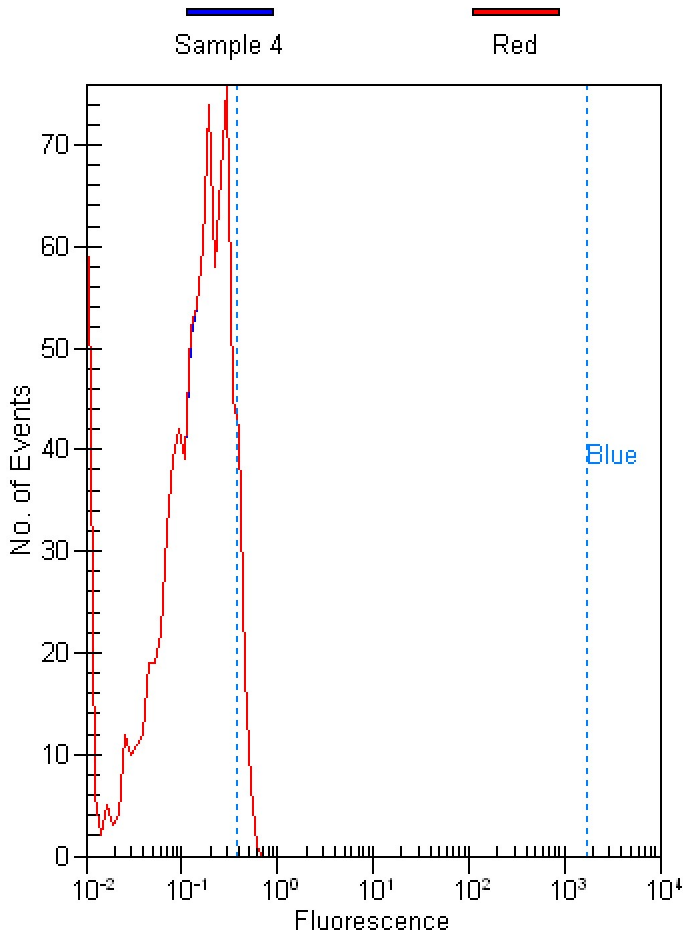
Marker	Min	Max	#Events	%Total	% of gated	Mean	StdDev	CV%	GMean
All Events	0.86	21.83	1,000	100.00	N/A	11.84	5.09	42.98	10.60
Red on all events	0.12	4523.79	1,000	100.00	N/A	11.84	5.09	42.96	10.60

Assay Class: Red to Blue
 Data Path: C:\... bioanalyzer\2100 expert\data\2010-10-07\Silver_10-7-10.xad

Created: 10/7/2010 3:08:47 PM
 Modified: 10/7/2010 3:37:25 PM

Histogram Summary Continued ...

Sample 4



Histogram statistics for sample 4 :

Sample 4 -

Marker	Min	Max	#Events	%Total	% of gated	Mean	StdDev	CV%	GMean
All Events	0.01	0.60	890	100.00	N/A	0.17	0.12	68.63	0.12
Gated by Red	0.01	0.60	890	100.00	N/A	0.17	0.12	68.61	0.12
Blue on all events	0.39	1754.75	46	5.20	N/A	0.44	0.05	11.09	0.44
Blue on subset	0.39	1754.75	46	5.20	5.20	0.44	0.05	11.09	0.44

Histogram statistics for sample 4 :

Sample 4 -

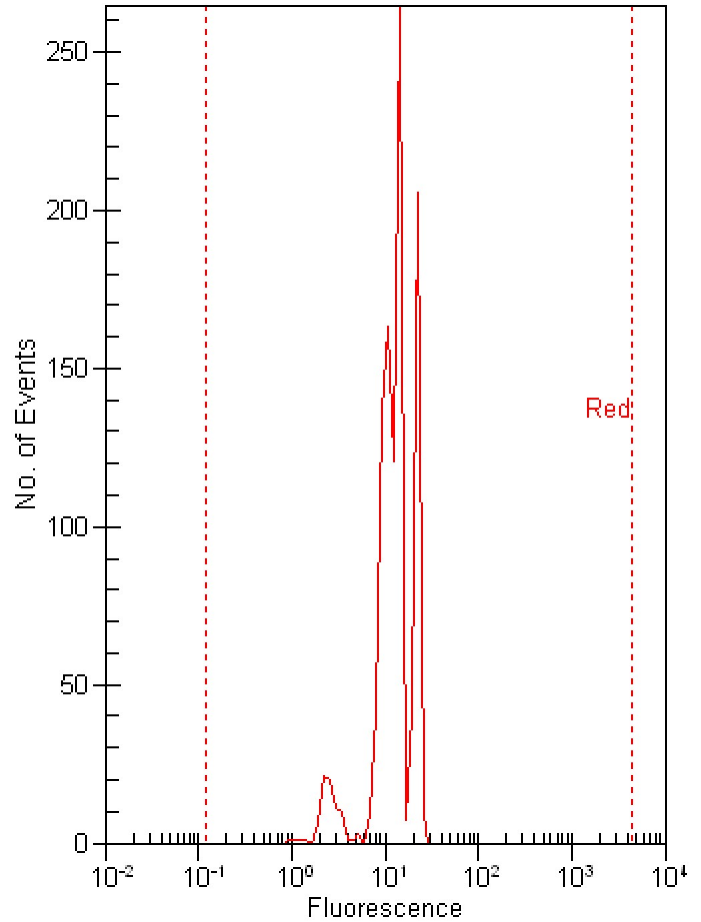
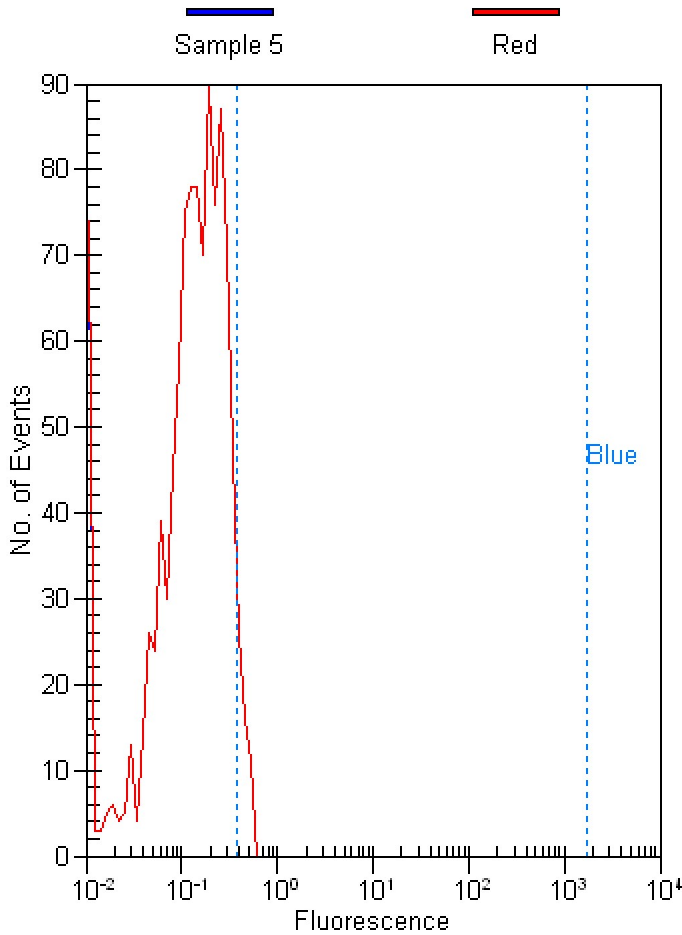
Marker	Min	Max	#Events	%Total	% of gated	Mean	StdDev	CV%	GMean
All Events	0.54	23.95	890	100.00	N/A	13.11	4.96	37.82	12.07
Red on all events	0.12	4523.79	890	100.00	N/A	13.09	4.97	37.94	12.05

Assay Class: Red to Blue
 Data Path: C:\... bioanalyzer\2100 expert\data\2010-10-07\Silver_10-7-10.xad

Created: 10/7/2010 3:08:47 PM
 Modified: 10/7/2010 3:37:25 PM

Histogram Summary Continued ...

Sample 5



Histogram statistics for sample 5 :

Sample 5 -

Marker	Min	Max	#Events	%Total	% of gated	Mean	StdDev	CV%	GMean
All Events	0.01	0.56	1,077	100.00	N/A	0.16	0.11	67.36	0.12
Gated by Red	0.01	0.56	1,077	100.00	N/A	0.16	0.11	67.45	0.12
Blue on all events	0.39	1754.75	40	3.70	N/A	0.45	0.05	11.35	0.45
Blue on subset	0.39	1754.75	40	3.70	3.70	0.45	0.05	11.35	0.45

Histogram statistics for sample 5 :

Sample 5 -

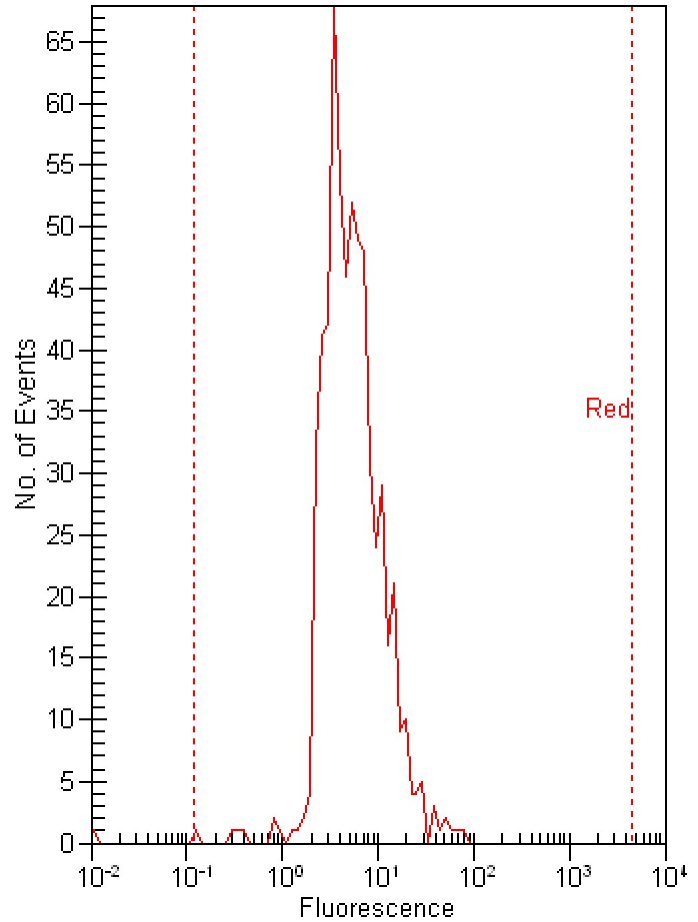
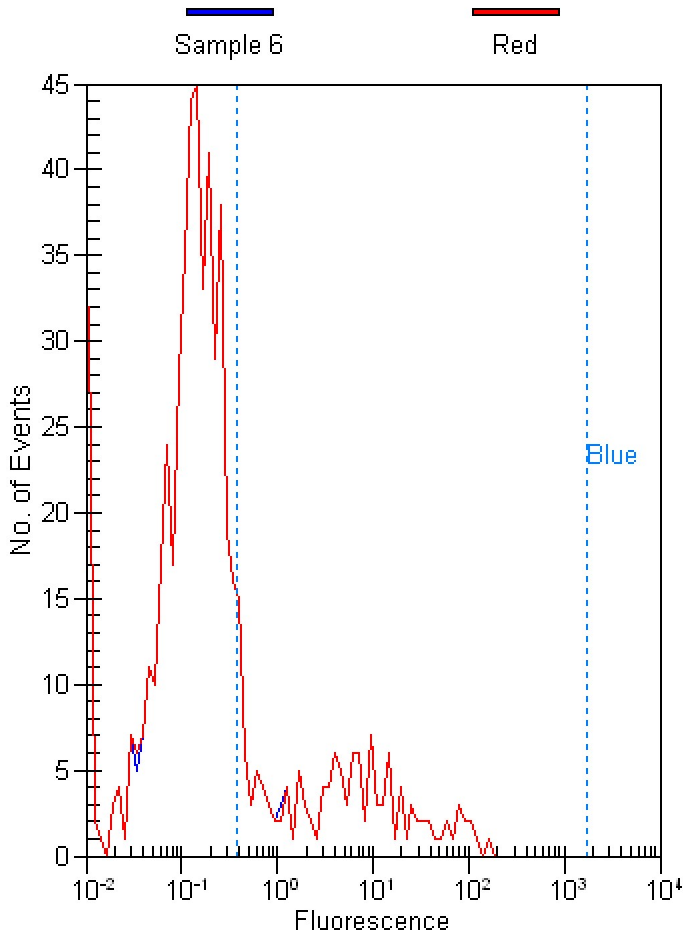
Marker	Min	Max	#Events	%Total	% of gated	Mean	StdDev	CV%	GMean
All Events	0.90	24.30	1,077	100.00	N/A	13.59	5.51	40.58	12.14
Red on all events	0.12	4523.79	1,077	100.00	N/A	13.59	5.51	40.56	12.14

Assay Class: Red to Blue
 Data Path: C:\... bioanalyzer\2100 expert\data\2010-10-07\Silver_10-7-10.xad

Created: 10/7/2010 3:08:47 PM
 Modified: 10/7/2010 3:37:25 PM

Histogram Summary Continued ...

Sample 6



Histogram statistics for sample 6 :

Sample 6 -

Marker	Min	Max	#Events	%Total	% of gated	Mean	StdDev	CV%	GMean
All Events	0.01	155.10	611	100.00	N/A	3.48	14.26	409.43	0.24
Gated by Red	0.01	155.10	610	99.80	N/A	3.48	14.26	409.65	0.24
Blue on all events	0.39	1754.75	133	21.80	N/A	15.46	27.37	177.03	4.63
Blue on subset	0.39	1754.75	132	21.60	21.60	15.57	27.44	176.27	4.68

Histogram statistics for sample 6 :

Sample 6 -

Marker	Min	Max	#Events	%Total	% of gated	Mean	StdDev	CV%	GMean
All Events	0.01	76.19	611	100.00	N/A	7.04	7.45	105.71	5.25
Red on all events	0.12	4523.79	610	99.80	N/A	7.05	7.44	105.49	5.31

Assay Class: Red to Blue
 Data Path: C:\... bioanalyzer\2100 expert\data\2010-10-07\Silver_10-7-10.xad

Created: 10/7/2010 3:08:47 PM
 Modified: 10/7/2010 3:37:25 PM

Run Logbook

Description	Number	Source	Category	Sub Category	Time Stamp	Time Zone	User	Host
Run ended on port 1 (Number of wells acquired: 6)		Instrument	Run		10/7/2010 3:35:07 PM	(GMT --04:00) Eastern Standard Time	Administrator	DATASYSTEM01
Run started on port 1 (File: C:\Program Files\Agilent\2100 bioanalyzer\2100 expert\Data\2010-10-07\2100 expert_Red to Blue_DE72905360_2010-10-07_15-08-47.xad)		Instrument	Run		10/7/2010 3:08:47 PM	(GMT --04:00) Eastern Standard Time	Administrator	DATASYSTEM01
Product Number : G2938C		Instrument	Run		10/7/2010 3:08:47 PM	(GMT --04:00) Eastern Standard Time	Administrator	DATASYSTEM01
Name :		Instrument	Run		10/7/2010 3:08:47 PM	(GMT --04:00) Eastern Standard Time	Administrator	DATASYSTEM01
Vendor : Agilent Technologies		Instrument	Run		10/7/2010 3:08:47 PM	(GMT --04:00) Eastern Standard Time	Administrator	DATASYSTEM01
Serial# : DE72905360		Instrument	Run		10/7/2010 3:08:47 PM	(GMT --04:00) Eastern Standard Time	Administrator	DATASYSTEM01
Firmware : C.01.069		Instrument	Run		10/7/2010 3:08:47 PM	(GMT --04:00) Eastern Standard Time	Administrator	DATASYSTEM01
Cartridge : Pressure		Instrument	Run		10/7/2010 3:08:47 PM	(GMT --04:00) Eastern Standard Time	Administrator	DATASYSTEM01