

Engineering Yeast to Play Conway's Game of Life

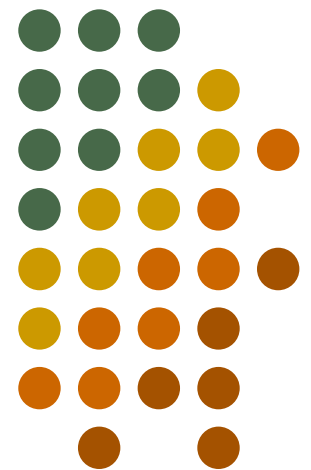
Elizabeth Bendler¹

Ming-Tang Chen²

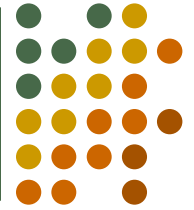
Ron Weiss²

03/12/2006

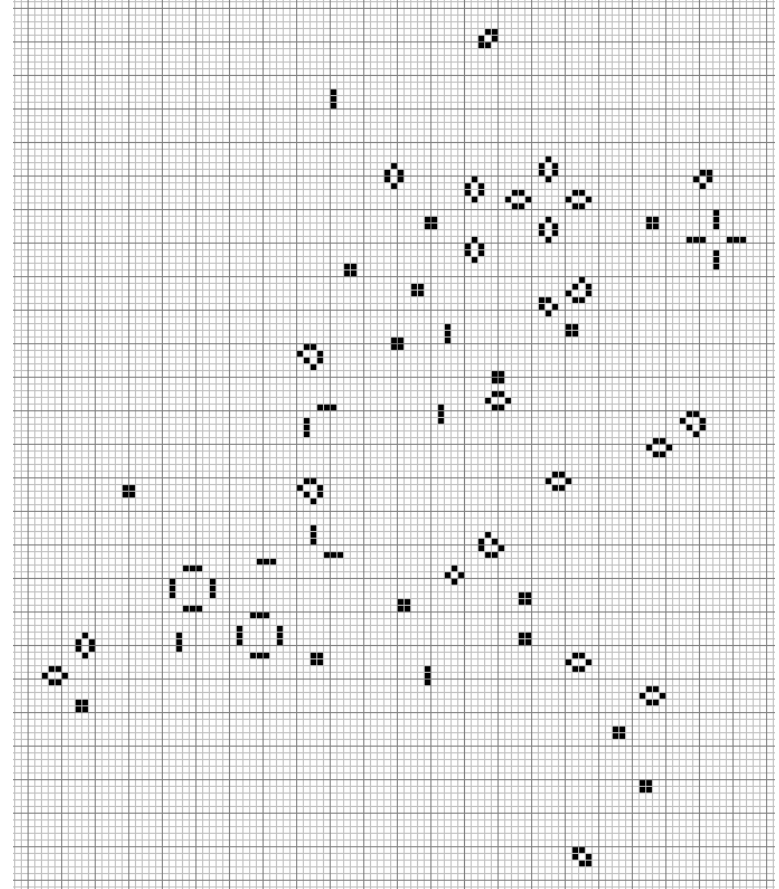
¹Drew University, ²Princeton University



Motivation



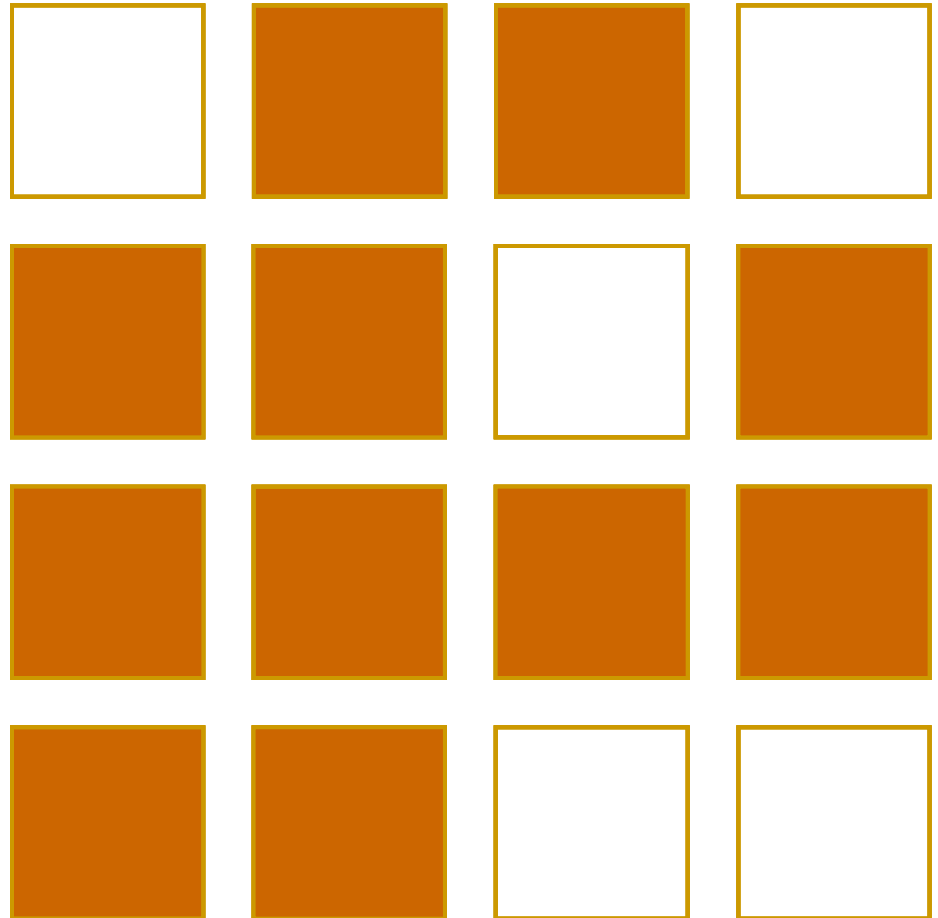
- Behavioral study
 - Test boundaries of what may be predictable in biological systems
 - Compare behavior between implementations
- Applications
 - Population control for fermentation processes
 - Development in higher eukaryotes (e.g. tissue engineering, organ regeneration)



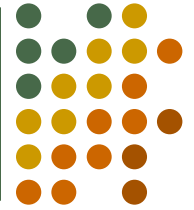
What is Conway's Game of Life?



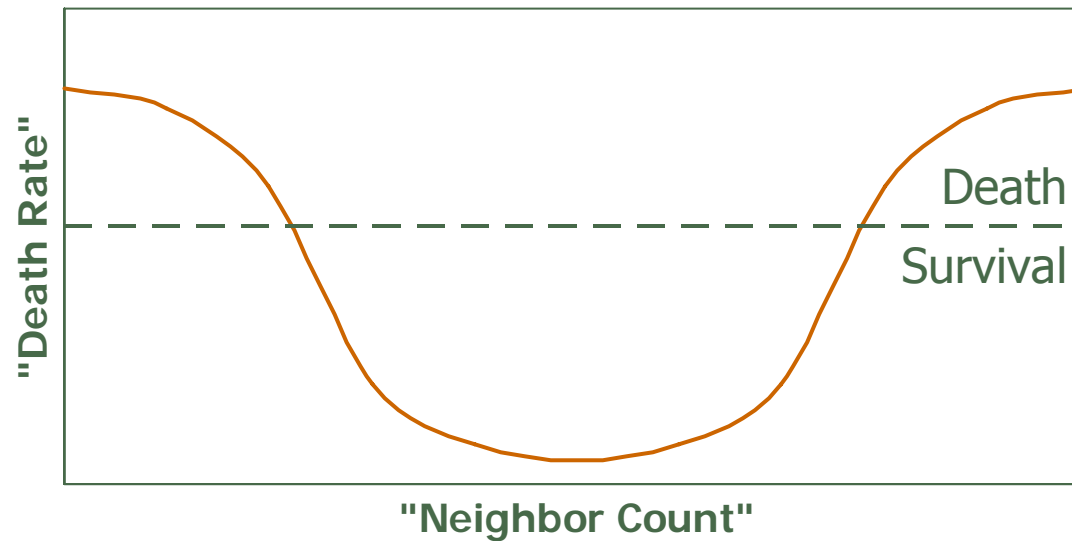
- Infinite grid
- Four simple rules
 - < 2 —loneliness—death
 - 2 or 3—“happy”—survival
 - > 3 —overcrowded—death
 - Empty location bounded by 3 neighbors—birth



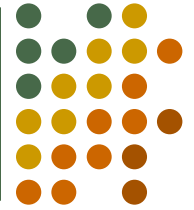
Design goals



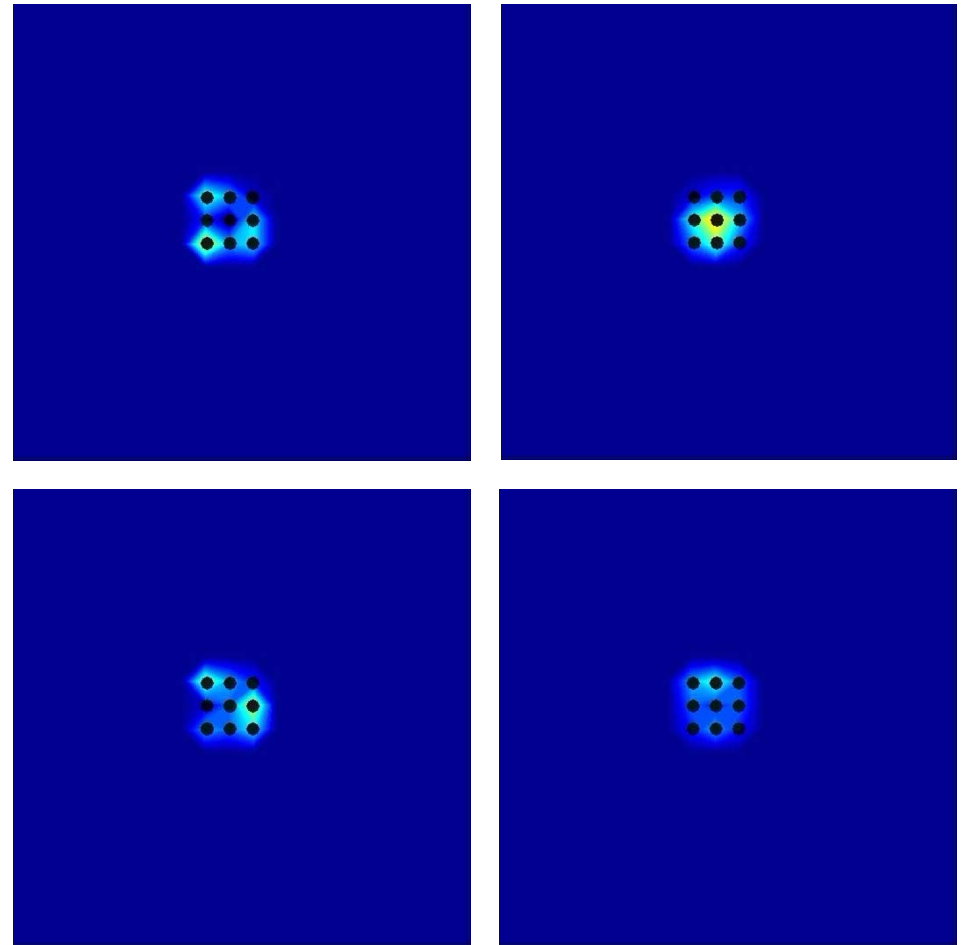
- Artificial cell-cell communication allows yeast to detect nearby population densities
- Killing mechanism to control cell lysis/death
- Population density-band detect circuit



Non-deterministic pattern formation

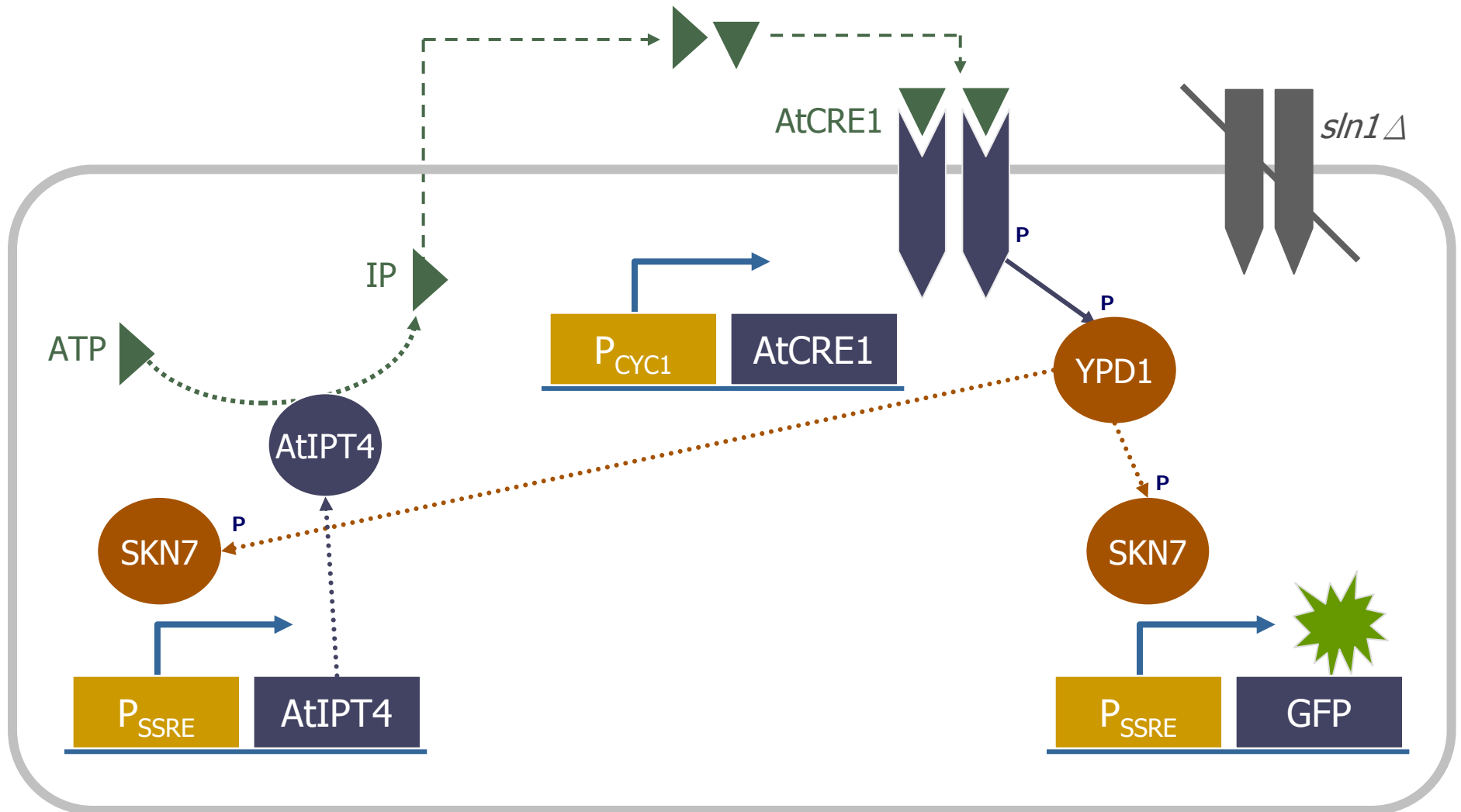
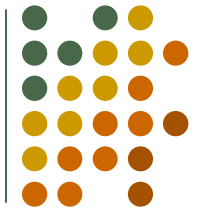


- Stochastic spatiotemporal simulations
- Same initial conditions
- Global behavior appears to be unpredictable

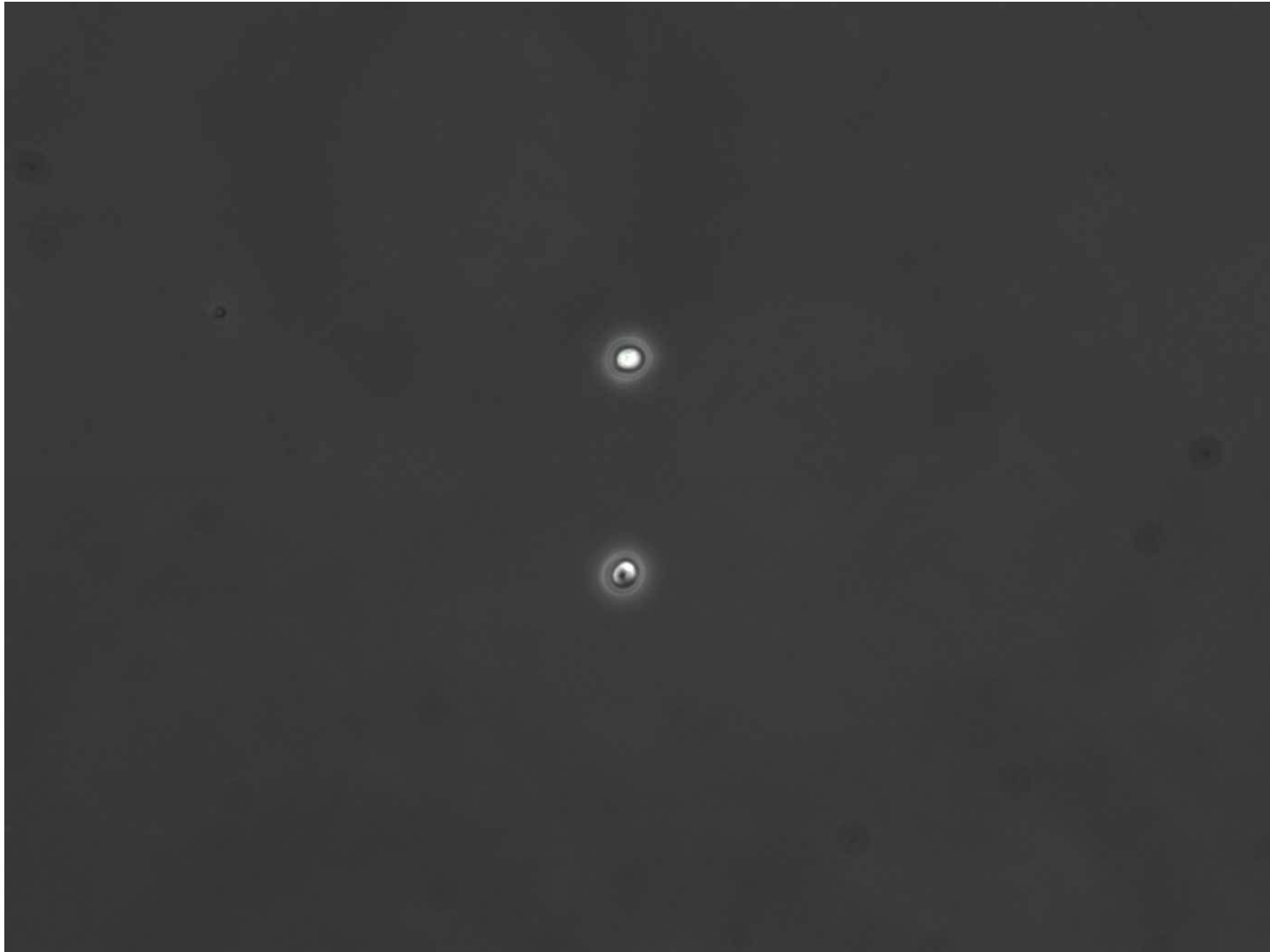
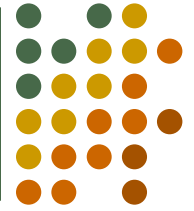


Simulations: Subhayu Basu

Artificial quorum sensing in yeast



Quorum sensing



High threshold design

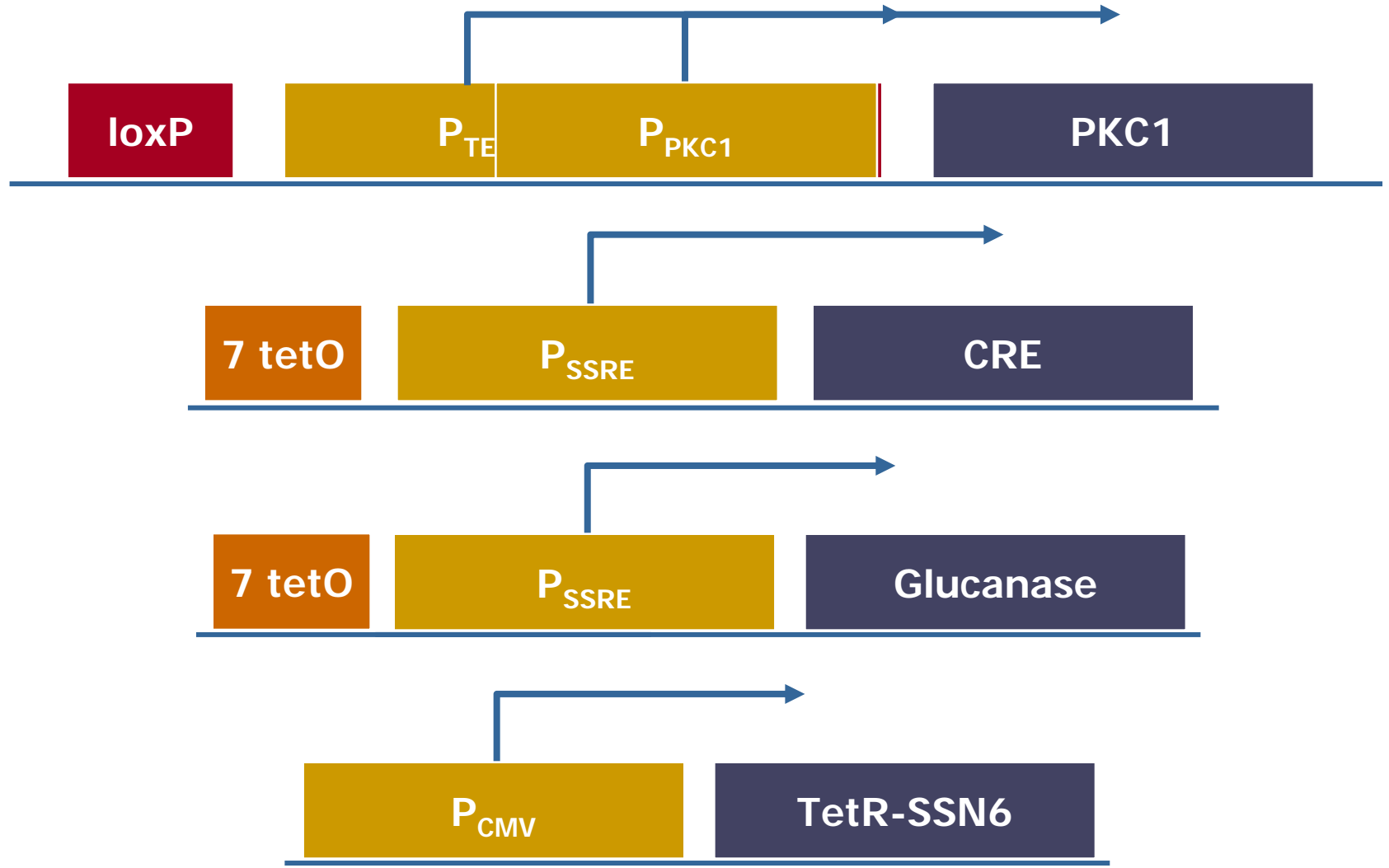
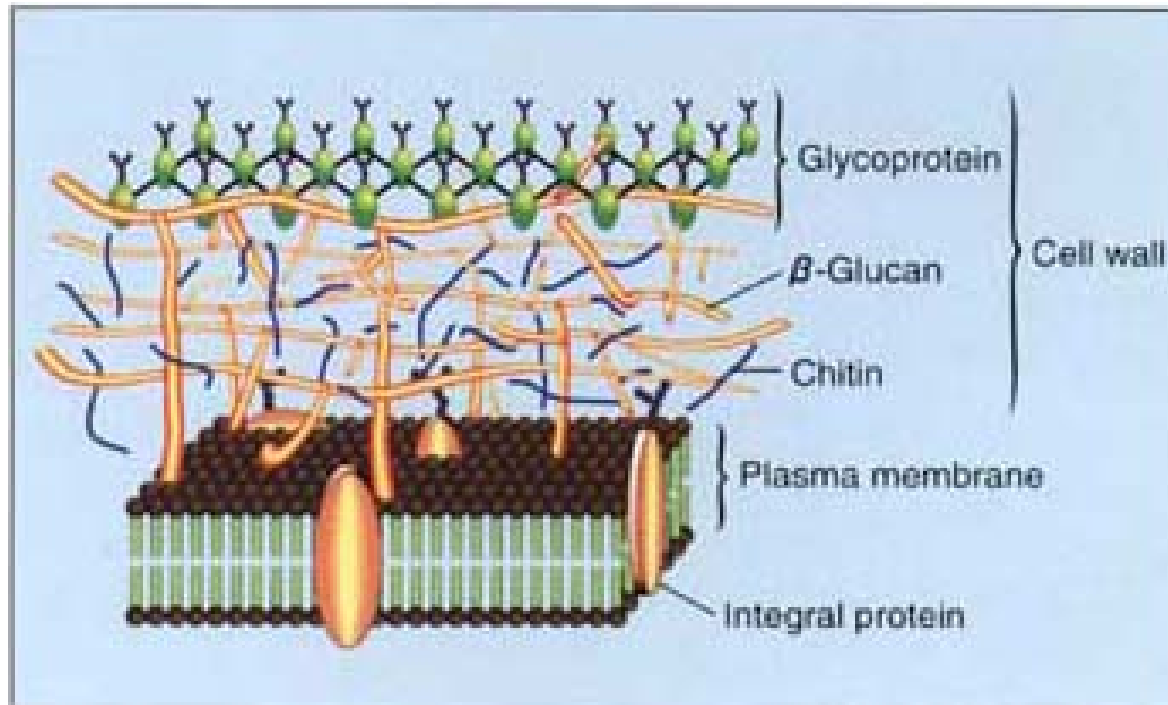
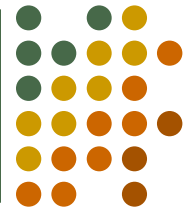


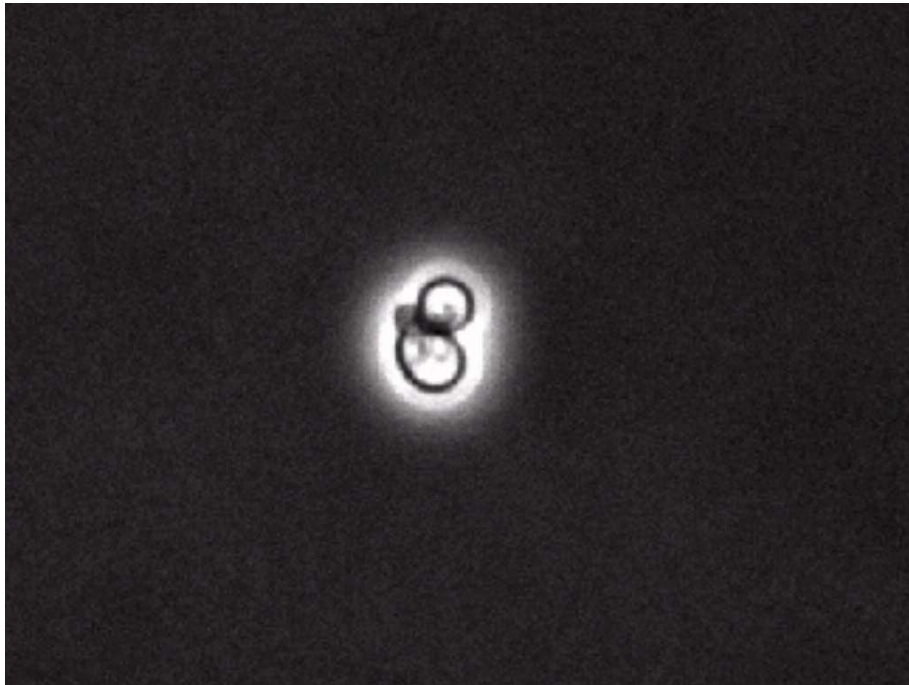
Diagram of yeast cell wall



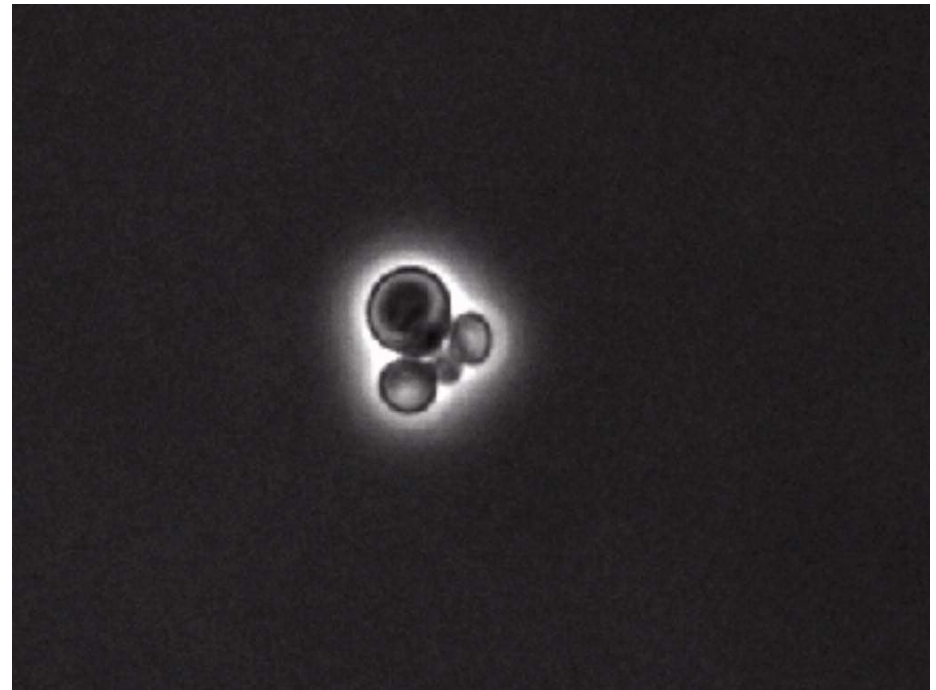
Demonstration of high threshold



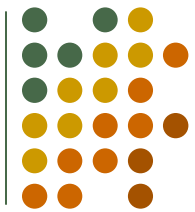
Cell death



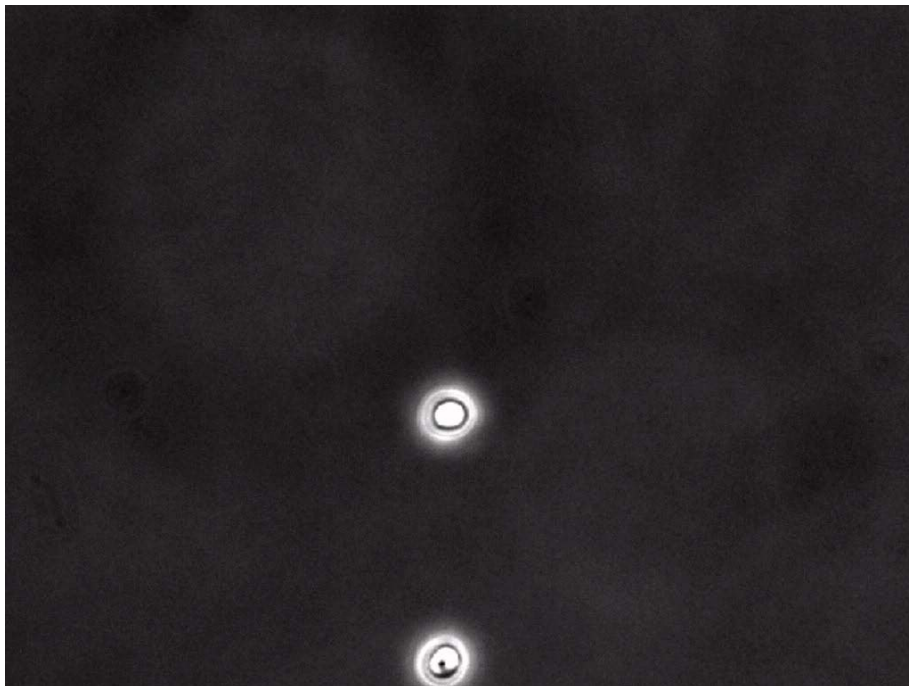
Lysis



Demonstration of high threshold



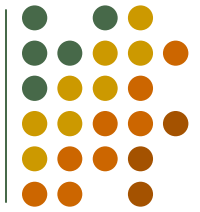
Negative control w/o IP



Positive control w/ IP

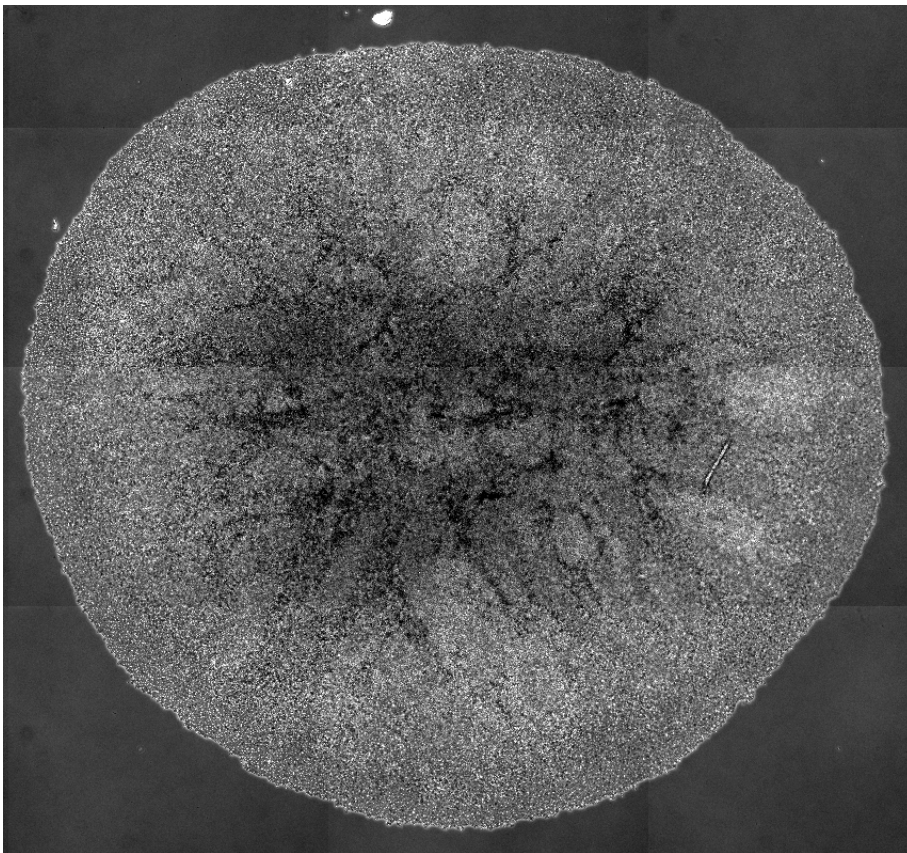


Demonstration of high threshold

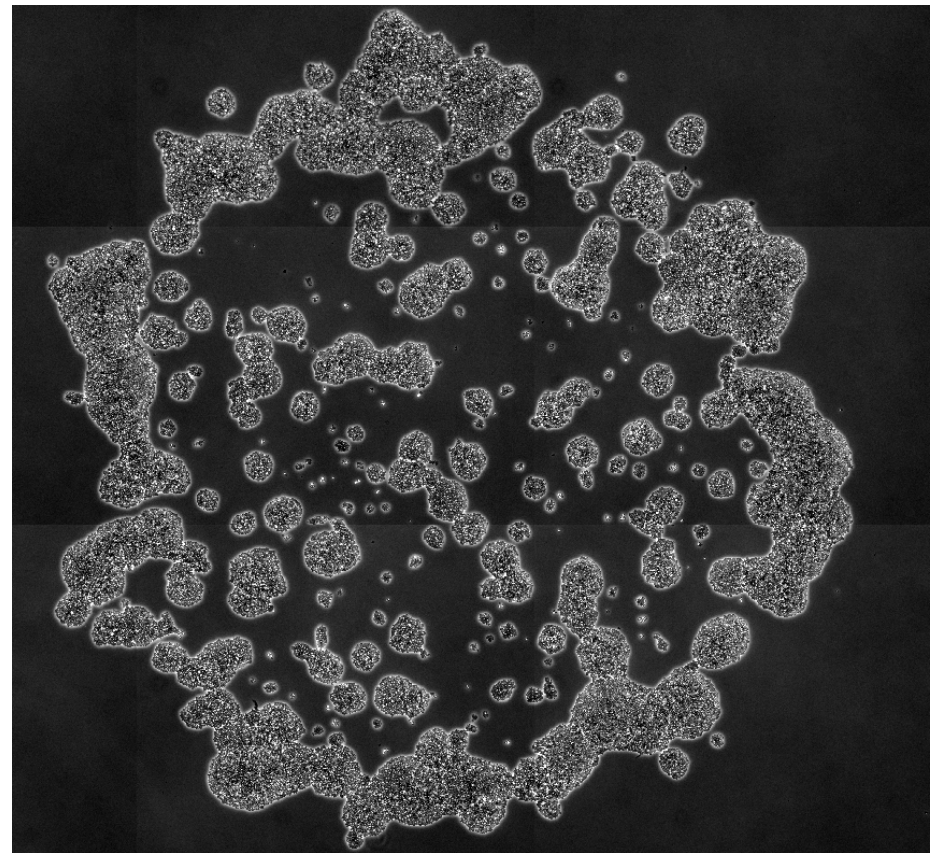


Growth over a two day period

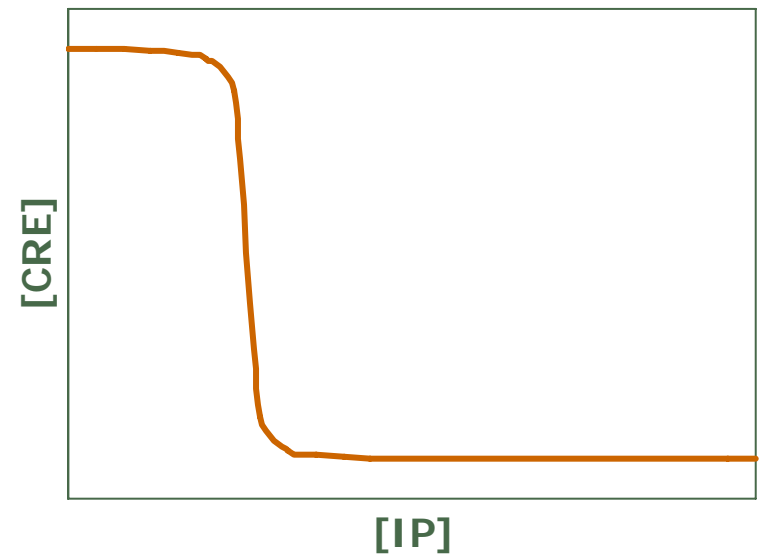
Negative control w/o IP



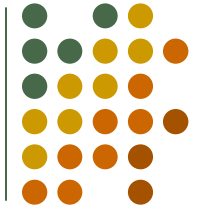
Positive control w/ IP



Future work—low threshold



Future work (cont'd)



- System integration
 - Stability
 - Adjust plasmid copy number to fine tune system dynamics
 - Possibility of integrating more elements into chromosome
- Killing efficiency
 - $P_{SSRE} \rightarrow P_{TR-SSRE}$
 - Elevated expression levels
 - Change expression levels of glucanase

Conclusions



- Quorum sensing strain of yeast
- Self-initiate death at sufficiently high population densities
- Develop a low threshold system
- More efficient cell death

Acknowledgements



- Institute for Biological Engineering
- iGEM and MIT
- Professor Ron Weiss
- Members of Weiss Lab
 - Professor Yoram Gerchman
 - Subhayu Basu
 - Sairam Subramanian

Complete circuit design

