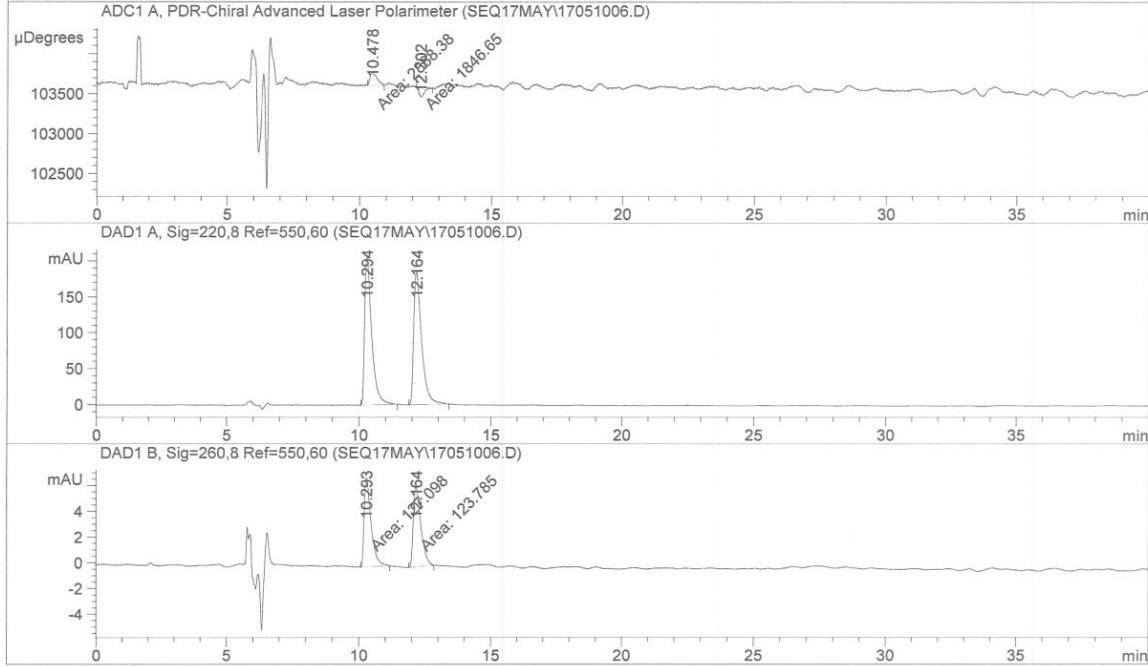


```

=====
Injection Date   : 5/17/2010 5:53:32 PM      Seq. Line   :    2
Sample Name     : JSN147927-RAC              Location    : Vial 21
Acq. Operator   : JGR                       Inj         :    1
                                           Inj Volume  : 4 µl
Method          : C:\HPCHEM\1\METHODS\C4ETOH-N.M
Last changed    : 5/17/2010 4:32:39 PM by EEN
Chiralcel OJ-H
Heptane/EtOH 60/40
0.5 ml/min
    
```

OJ-H



Area Percent Report

```

=====
Sorted By       :      Signal
Multiplier      :      1.0000
Dilution        :      1.0000
Use Multiplier & Dilution Factor with ISTDs
    
```

Signal 1: ADC1 A, PDR-Chiral Advanced Laser Polarimeter

Peak #	RetTime [min]	Type	Width [min]	Area µDegrees*	Height µDegrees	Area %
1	10.478	MM	0.2921	2888.37500	164.81291	61.0002
2	12.302	MM N	0.2472	1846.65137	124.48665	38.9998

Totals : 4735.02637 289.29956

Results obtained with enhanced integrator!